

DECOMMISSIONING REPORT

MDM 33-14 FLOWLINE

ECMC REMEDIATION # 32449

Prepared for:



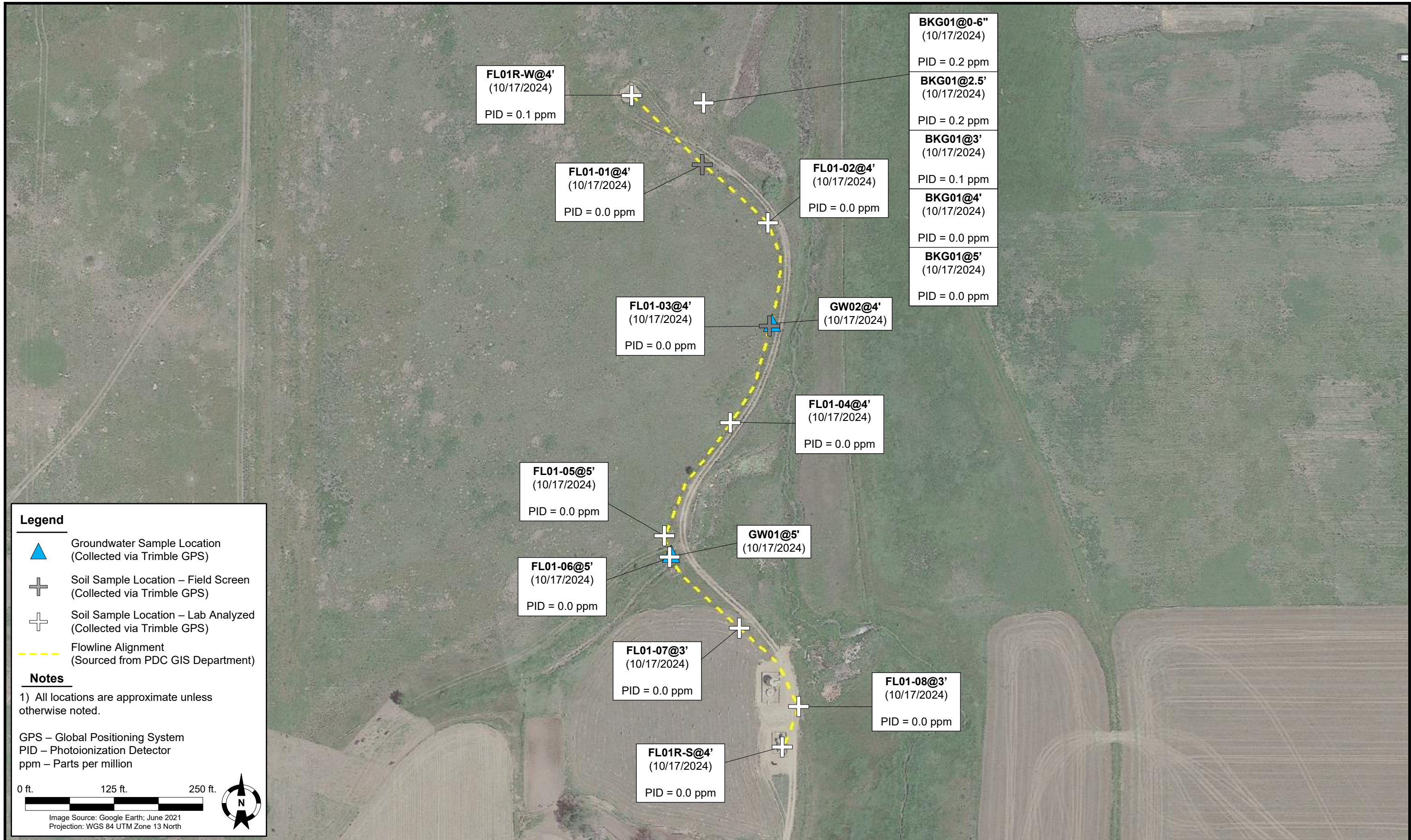
PDC ENERGY

1099 18th Street
Suite 1500
Denver, CO 80202

Prepared by:



4725 Independence Street
Wheat Ridge, CO 80033



Legend

- Groundwater Sample Location (Collected via Trimble GPS)
- Soil Sample Location – Field Screen (Collected via Trimble GPS)
- Soil Sample Location – Lab Analyzed (Collected via Trimble GPS)
- Flowline Alignment (Sourced from PDC GIS Department)

Notes

1) All locations are approximate unless otherwise noted.

GPS – Global Positioning System
 PID – Photoionization Detector
 ppm – Parts per million

0 ft. 125 ft. 250 ft.

Image Source: Google Earth; June 2021
 Projection: WGS 84 UTM Zone 13 North

DATE:	June 23, 2025
DESIGNED BY:	B. Nelson
DRAWN BY:	L. Buck

Tasman, Inc.
 4725 Independence Street
 Wheat Ridge, CO 80033

PDC Energy, Inc. – 69175 – DJ Basin
MDM 33-14 Flowline
 NWSE, Section 14, Township 2 North, Range 68 West
 Weld County, Colorado

SOIL SAMPLE
 LOCATION MAP
 (10/17/2024)

FIGURE
 1

TABLE 1
FIELD DATA SUMMARY TABLE
PDC ENERGY, INC. - 69175
MDM 33-14 FLOWLINE, WELD COUNTY, COLORADO
REM # 32449

Sample ID	Sample Date	Depth (ft. bgs)	GPS Data		PDOP Value	VOC Concentration (ppm)
			Latitude/Longitude			
FL01-01@4'	10/17/2024	4	40.136872	-104.968148	NC	0.0
FL01-02@4'	10/17/2024	4	40.136645	-104.967817	1.0	0.0
FL01-03@4'	10/17/2024	4	40.136244	-104.967809	1.0	0.0
FL01-04@4'	10/17/2024	4	40.135868	-104.968013	1.0	0.0
FL01-05@5'	10/17/2024	5	40.135432	-104.968342	1.0	0.0
FL01-06@5'	10/17/2024	5	40.135349	-104.968315	1.0	0.0
FL01-07@3'	10/17/2024	3	40.135075	-104.967964	1.2	0.0
FL01-08@3'	10/17/2024	3	40.134770	-104.967667	1.1	0.0
FL01R-S@4'	10/17/2024	4	40.134614	-104.967745	1.2	0.0
FL01R-W@4'	10/17/2024	4	40.137134	-104.968505	0.9	0.0
GW01@5'	10/17/2024	5	40.135350	-104.968312	1.0	NA
GW02@4'	10/17/2024	4	40.136247	-104.967799	0.9	NA
BKG01@0-0.5"	10/17/2024	0-0.5	40.137106	-104.968146	0.9	0.2
BKG01@2.5'	10/17/2024	2.5	40.137106	-104.968146	0.9	0.2
BKG01@3'	10/17/2024	3	40.137106	-104.968146	0.9	0.1
BKG01@4'	10/17/2024	4	40.137106	-104.968146	0.9	0.0
BKG01@5'	10/17/2024	5	40.137106	-104.968146	0.9	0.0

Notes:

1. Global Positioning System (GPS) data is provided in decimal degrees using North American Datum (NAD) 83 UTM Zone 13 North.
2. Volatile organic compound (VOC) concentrations are measured in the field using a photoionization detector (PID).

PDOP = Position Dilution of Precision

ppm = Parts per million

ft. = Feet

bgs = Below ground surface

NA = Not Applicable

NC = Data not collected

TABLE 2
SUMMARY OF VOLATILE ORGANIC SOIL CHEMISTRY DATA
PDC ENERGY, INC. - 69175
MDM 33-14 FLOWLINE, WELD COUNTY, COLORADO
REM # 32449

Sample ID	Sample Date	Depth (ft. bgs)	Benzene (mg/kg)	Toluene (mg/kg)	Ethyl-Benzene (mg/kg)	Xylenes (mg/kg)	1,2,4-Trimethyl-Benzene (mg/kg)	1,3,5-Trimethyl-Benzene (mg/kg)	Naphthalene (mg/kg)	TPH (mg/kg)	TPH GRO (mg/kg)	TPH DRO (mg/kg)	TPH ORO (mg/kg)
ECMC Table 915-1 Limits (Residential SSL)			1.2	490	5.8	58	30	27	2	500	500*		
ECMC Table 915-1 Limits (Protection of Groundwater SSL)			0.0026	0.69	0.78	9.9	0.0081	0.0087	0.0038	500	500*		
FL01-02@4'	10/17/2024	4	<0.0020	<0.0050	<0.0050	<0.010	<0.0050	<0.0050	<0.0038	<500	<0.50	<50	<50
FL01-04@4'	10/17/2024	4	<0.0020	<0.0050	<0.0050	<0.010	<0.0050	<0.0050	<0.0038	<500	<0.50	<50	<50
FL01-05@5'	10/17/2024	5	<0.0020	<0.0050	<0.0050	<0.010	<0.0050	<0.0050	<0.0038	<500	<0.50	<50	<50
FL01-06@5'	10/17/2024	5	<0.0020	<0.0050	<0.0050	<0.010	<0.0050	<0.0050	<0.0038	<500	<0.50	<50	<50
FL01-07@3'	10/17/2024	3	<0.0020	<0.0050	<0.0050	<0.010	<0.0050	<0.0050	<0.0038	<500	<0.50	<50	<50
FL01-08@3'	10/17/2024	3	<0.0020	<0.0050	<0.0050	<0.010	<0.0050	<0.0050	<0.0038	<500	<0.50	<50	<50
FL01R-S@4'	10/17/2024	4	<0.0020	<0.0050	<0.0050	<0.010	<0.0050	<0.0050	<0.0038	<500	<0.50	<50	<50
FL01R-W@4'	10/17/2024	4	<0.0020	<0.0050	<0.0050	<0.010	<0.0050	<0.0050	<0.0038	<500	<0.50	<50	<50
BKG01@0-6"	10/17/2024	0-0.5	<0.0020	<0.0050	<0.0050	<0.010	<0.0050	<0.0050	<0.0038	<500	<0.50	<50	<50
BKG01@2.5'	10/17/2024	2.5	<0.0020	<0.0050	<0.0050	<0.010	<0.0050	<0.0050	<0.0038	<500	<0.50	<50	<50
BKG01@3'	10/17/2024	3	<0.0020	<0.0050	<0.0050	<0.010	<0.0050	<0.0050	<0.0038	<500	<0.50	<50	<50
BKG01@4'	10/17/2024	4	<0.0020	<0.0050	<0.0050	<0.010	<0.0050	<0.0050	<0.0038	<500	<0.50	<50	<50
BKG01@5'	10/17/2024	5	<0.0020	<0.0050	<0.0050	<0.010	<0.0050	<0.0050	<0.0038	<500	<0.50	<50	<50

Notes:

1. **Bold** values exceed the ECMC Table 915-1 limit(s).
2. Pink & blue highlighted soil analytical values indicate an exceedance of the referenced soil screening level (SSL).
3. * Indicates laboratory minimum detection limit in excess of SSL.
4. ** Summation of GRO+DRO+ORO must be less than 500 mg/kg.

ECMC = Energy & Carbon Management Commission

(<) = Analytical result is less than the indicated laboratory reporting limit.

TPH-GRO = Total petroleum hydrocarbons - gasoline range organics

TPH-DRO = Total petroleum hydrocarbons - diesel range organics

TPH-ORO = Total petroleum hydrocarbons - oil range organics

mg/kg = Milligrams per kilogram

ft. = Feet

bgs = Below ground surface

TABLE 3
SUMMARY OF POLYCYCLIC AROMATIC HYDROCARBON SOIL CHEMISTRY DATA
PDC ENERGY, INC. - 69175
MDM 33-14 FLOWLINE, WELD COUNTY, COLORADO
REM # 32449

Sample ID	Sample Date	Depth (ft. bgs)	Acenaphthene (mg/kg)	Anthracene (mg/kg)	Benzo (a) Anthracene (mg/kg)	Benzo (a) Pyrene (mg/kg)	Benzo (b) Fluoranthene (mg/kg)	Benzo (k) Fluoranthene (mg/kg)	Chrysene (mg/kg)	Dibenzo (a,h) Anthracene (mg/kg)	Fluoranthene (mg/kg)	Fluorene (mg/kg)	Indeno (1,2,3-cd) Pyrene (mg/kg)	Pyrene (mg/kg)	1-Methyl-Naphthalene (mg/kg)	2-Methyl-Naphthalene (mg/kg)
ECMC Table 915-1 Limits (Residential SSL)			360	1,800	1.1	0.11	1.1	11	110	0.11	240	240	1.1	180	18	24
ECMC Table 915-1 Limits (Protection of Groundwater SSL)			0.55	5.8	0.011	0.24	0.3	2.9	9	0.096	8.9	0.54	0.98	1.3	0.006	0.019
FL01-02@4'	10/17/2024	4	<0.00500	<0.00500	<0.00500	<0.00500	<0.00500	<0.00500	<0.00500	<0.00500	<0.00500	<0.00500	<0.00500	<0.00500	<0.00500	<0.00500
FL01-04@4'	10/17/2024	4	<0.00500	<0.00500	<0.00500	<0.00500	<0.00500	<0.00500	<0.00500	<0.00500	<0.00500	<0.00500	<0.00500	<0.00500	<0.00500	<0.00500
FL01-05@5'	10/17/2024	5	<0.00500	<0.00500	<0.00500	<0.00500	<0.00500	<0.00500	<0.00500	<0.00500	<0.00500	<0.00500	<0.00500	<0.00500	<0.00500	<0.00500
FL01-06@5'	10/17/2024	5	<0.00500	<0.00500	<0.00500	<0.00500	<0.00500	<0.00500	<0.00500	<0.00500	<0.00500	<0.00500	<0.00500	<0.00500	<0.00500	<0.00500
FL01-07@3'	10/17/2024	3	<0.00500	<0.00500	<0.00500	<0.00500	<0.00500	<0.00500	<0.00500	<0.00500	<0.00500	<0.00500	<0.00500	<0.00500	<0.00500	<0.00500
FL01-08@3'	10/17/2024	3	<0.00500	<0.00500	<0.00500	<0.00500	<0.00500	<0.00500	<0.00500	<0.00500	<0.00500	<0.00500	<0.00500	<0.00500	<0.00500	<0.00500
FL01R-S@4'	10/17/2024	4	<0.00500	<0.00500	<0.00500	<0.00500	<0.00500	<0.00500	<0.00500	<0.00500	<0.00500	<0.00500	<0.00500	<0.00500	<0.00500	<0.00500
FL01R-W@4'	10/17/2024	4	<0.00500	<0.00500	<0.00500	<0.00500	<0.00500	<0.00500	<0.00500	<0.00500	<0.00500	<0.00500	<0.00500	<0.00500	<0.00500	<0.00500
BKG01@0-6"	10/17/2024	0-0.5	<0.00500	<0.00500	<0.00500	<0.00500	<0.00500	<0.00500	<0.00500	<0.00500	<0.00500	<0.00500	<0.00500	<0.00500	<0.00500	<0.00500
BKG01@2.5'	10/17/2024	2.5	<0.00500	<0.00500	<0.00500	<0.00500	<0.00500	<0.00500	<0.00500	<0.00500	<0.00500	<0.00500	<0.00500	<0.00500	<0.00500	<0.00500
BKG01@3'	10/17/2024	3	<0.00500	<0.00500	<0.00500	<0.00500	<0.00500	<0.00500	<0.00500	<0.00500	<0.00500	<0.00500	<0.00500	<0.00500	<0.00500	<0.00500
BKG01@4'	10/17/2024	4	<0.00500	<0.00500	<0.00500	<0.00500	<0.00500	<0.00500	<0.00500	<0.00500	<0.00500	<0.00500	<0.00500	<0.00500	<0.00500	<0.00500
BKG01@5'	10/17/2024	5	<0.00500	<0.00500	<0.00500	<0.00500	<0.00500	<0.00500	<0.00500	<0.00500	<0.00500	<0.00500	<0.00500	<0.00500	<0.00500	<0.00500

Notes:

- Bold** values exceed the ECMC Table 915-1 limit(s).
- Pink & blue highlighted soil analytical values indicate an exceedance of the referenced soil screening level (SSL).
- * Indicates laboratory minimum detection limit in excess of SSL.

ECMC = Colorado Energy & Carbon Management Commission
(<) = Analytical result is less than the indicated laboratory reporting limit.

ft. = Feet
bgs = Below ground surface
mg/kg = Milligrams per kilogram

TABLE 4
SUMMARY OF SOIL SUITABILITY FOR RECLAMATION
PDC ENERGY, INC. - 69175
MDM 33-14 FLOWLINE, WELD COUNTY, COLORADO
REM # 32449

Sample ID	Sample Date	Depth (ft. bgs)	pH (Standard Units)	EC (mmhos/cm)	SAR (Standard Units)	Boron (mg/L)
ECMC Table 915-1 Soil Suitability Limits			6 - 8.3	<4	<6	2
FL01-02@4'	10/17/2024	4	7.64	1.32	4.19	<2.00
FL01-04@4'	10/17/2024	4	7.99	0.434	2.03	<2.00
FL01-05@5'	10/17/2024	5	7.84	0.428	1.71	<2.00
FL01-06@5'	10/17/2024	5	7.64	0.778	1.56	<2.00
FL01-07@3'	10/17/2024	3	7.72	1.75	4.66	<2.00
FL01-08@3'	10/17/2024	3	7.96	1.90	6.02	<2.00
FL01R-S@4'	10/17/2024	4	8.46	0.221	0.0596	<2.00
FL01R-W@4'	10/17/2024	4	8.17	0.387	0.441	<2.00
BKG01@0-6"	10/17/2024	0-0.5	7.92	1.57	6.93	<2.00
BKG01@2.5'	10/17/2024	2.5	8.03	2.52	9.19	<2.00
BKG01@3'	10/17/2024	3	7.78	1.05	2.97	<2.00
BKG01@4'	10/17/2024	4	8.13	0.853	2.42	<2.00
BKG01@5'	10/17/2024	5	8.01	0.821	2.16	<2.00
Maximum Background Concentration			8.13	-	9.19	-

Notes:

1. **Bold** faced values exceed the ECMC Table 915-1 limit(s), but are within background concentrations.
2. **Bold** faced values exceed the ECMC Table 915-1 limit(s) and are above native background concentrations.
3. Brown highlighted soil analytical values indicate a regulatory exceedance.

ECMC = Colorado Energy & Carbon Management Commission

EC = Electrical conductivity

SAR = Sodium adsorption ratio

mmhos/cm = millimhos per centimeter

mg/L = milligram per liter

(<) = Analytical result is less than the indicated laboratory reporting limit.

ft. = Feet

bgs = Below ground surface

TABLE 5
SUMMARY OF METALS IN SOIL CHEMISTRY DATA
PDC ENERGY, INC. - 69175
MDM 33-14 FLOWLINE, WELD COUNTY, COLORADO
REM # 32449

Sample ID	Sample Date	Depth (ft. bgs)	Arsenic (mg/kg)	Barium (mg/kg)	Cadmium (mg/kg)	Chromium (VI) ^[d] (mg/kg)	Copper (mg/kg)	Lead (mg/kg)	Nickel (mg/kg)	Selenium (mg/kg)	Silver (mg/kg)	Zinc (mg/kg)
ECMC Table 915-1 Limits (Residential SSL)			0.68	15,000	71	0.3	3,100	400	1,500	390	390	23,000
ECMC Table 915-1 Limits (Protection of Groundwater SSL)			0.29	82	0.38	0.00067	46	14	26	0.26	0.8	370
FL01-02@4'	10/17/2024	4	3.38	122	0.247	<0.30*	6.96	8.83	8.08	<0.260	0.0434	26.8
FL01-04@4'	10/17/2024	4	4.61	168	0.398	<0.30*	9.24	12.8	9.24	<0.260	0.0762	34.4
FL01-05@5'	10/17/2024	5	3.19	103	0.264	<0.30*	7.83	10.6	7.70	<0.260	0.0582	28.3
FL01-06@5'	10/17/2024	5	3.61	94.5	0.269	<0.30*	7.92	10.9	7.80	0.282	0.0636	30.6
FL01-07@3'	10/17/2024	3	3.27	91.9	0.242	<0.30*	6.76	8.73	7.13	<0.260	0.0433	27.0
FL01-08@3'	10/17/2024	3	2.93	96.7	0.233	<0.30*	6.61	8.17	6.55	<0.260	0.0465	24.3
FL01R-S@4'	10/17/2024	4	3.89	106	0.242	<0.30*	7.95	8.95	6.97	<0.260	0.0500	25.8
FL01R-W@4'	10/17/2024	4	4.41	128	1.02	<0.30*	12.5	23.5	8.28	0.276	0.0703	51.0
BKG01@0-6"	10/17/2024	0-0.5	3.90	107	0.262	<0.30*	7.05	9.72	7.58	<0.260	0.0535	27.9
BKG01@2.5'	10/17/2024	2.5	4.27	115	0.273	<0.30*	6.78	9.52	8.69	<0.260	0.0486	26.8
BKG01@3'	10/17/2024	3	3.73	55.8	<0.200	<0.30*	5.27	7.43	6.11	<0.260	0.0328	23.0
BKG01@4'	10/17/2024	4	6.53	44.5	0.275	<0.30*	6.85	9.84	8.37	0.267	0.0214	32.3
BKG01@5'	10/17/2024	5	7.18	48.0	0.370	<0.30*	8.41	10.1	8.88	<0.260	0.0284	29.5
Maximum Background Concentration X 1.25			8.98	144	0.463			12.6		0.334	-	-

Notes:

- 1. Bold** faced values exceed the ECMC Table 915-1 limit(s), but are within 1.25x background concentrations.
- 2. Bold** faced values exceed the ECMC Table 915-1 limit(s) and native background concentrations.
- Red & blue highlighted soil analytical values indicate an exceedance of the referenced soil screening level (SSL).
- Compound falls within ECMC Table 915-1 Footnote 9.
- Non-detect background results accounted for in the calculations by using the reporting limit.

ECMC = Energy & Carbon Management Commission

(<) = Analytical result is less than the indicated laboratory reporting limit.

mg/kg = Milligrams per kilogram

ft. = Feet

bgs = Below ground surface

* Indicates laboratory minimum detection limit in excess of SSL

TABLE 6
SUMMARY OF GROUNDWATER ELEVATION DATA AND ORGANIC CHEMISTRY DATA
PDC ENERGY, INC. - 69175
MDM 33-14 FLOWLINE, WELD COUNTY, COLORADO
REM # 32449

Sample ID	Sample Date	Benzene (µg/L)	Toluene (µg/L)	Ethyl-Benzene (µg/L)	Xylenes (µg/L)	Naphthalene (µg/L)	1,2,4- Trimethyl- Benzene (µg/L)	1,3,5- Trimethyl- Benzene (µg/L)	Depth to Groundwater Below Ground Surface (ft)
ECMC Table 915-1 Limits		5.0	560	700	1400	140	67	67	
GW01@5'	10/17/24	<1.0	<1.0	<1.0	<2.0	<1.0	<1.0	<1.0	5
GW02@4'	10/17/24	<1.0	<1.0	<1.0	<2.0	<1.0	<1.0	<1.0	4

1. Bold values exceed the ECMC limit(s).
2. Red highlighted groundwater analytical values indicate a regulatory exceedance.

ECMC = Colorado Energy & Carbon Management Commission

ft. = Feet

µg/L = Micrograms per liter

TABLE 7
SUMMARY OF INORGANIC GROUNDWATER CHEMISTRY DATA
PDC ENERGY, INC. - 69175
MDM 33-14 FLOWLINE, WELD COUNTY, COLORADO
REM # 32449

Sample ID	Sample Date	Total Dissolved Solids (mg/L)	Chloride Ion (mg/L)	Sulfate Ion (mg/L)
		<1.25 x local background	250 or <1.25 x local background	250 or <1.25 x local background
GW01@5'	10/17/24	607	41.2	70.1
GW02@4'	10/17/24	1,500	101	684

1. Bold values exceed the ECMC limit(s).
 2. Blue highlighted groundwater analytical values indicate a regulatory exceedance.
- ECMC = Colorado Energy & Carbon Management Commission
mg/L = Milligrams per liter



6855 W. 119th Ave.
Broomfield, CO 80020

CLIENT: PDC Energy, Inc.

LOGGED BY: S. Bousquet

PROJECT MANAGER: B. Nelson

DRILLING CONTRACTOR: Tasman

DRILLING EQUIPMENT: Hand Auger

DRILL BIT SIZE (INCHES): 3.25

DATE STARTED - COMPLETED: 10/17/24-10/17/24

TOTAL WELL DEPTH (FT. BGS): 5

DEPTH WATER ENCOUNTERED (FT. BGS): 3 ▼

MDM 33-14 Flowline

BORING / WELL ID: BKG01

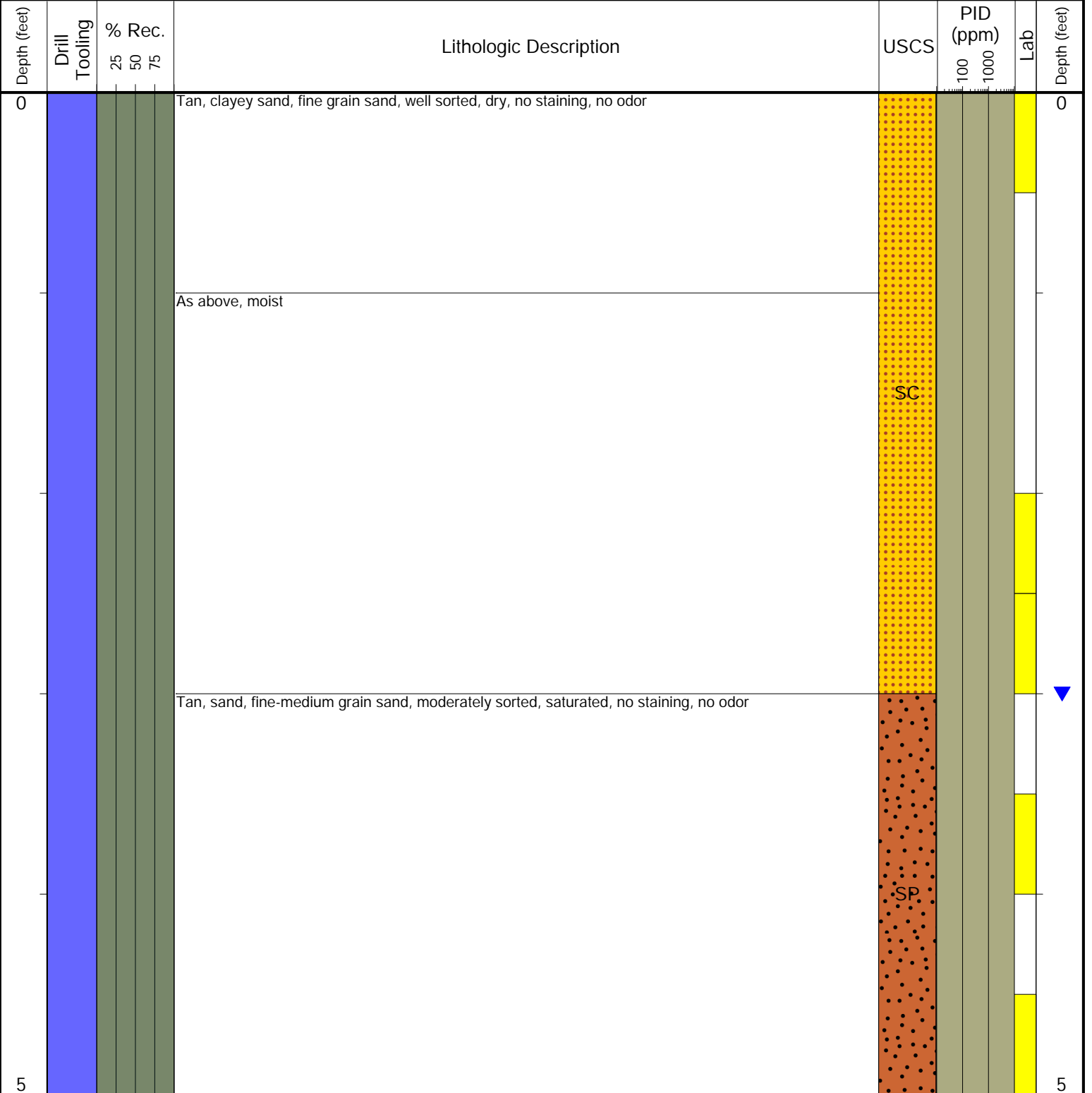
LOCATION: Weld County, Colorado

Latitude (NAD 83): 40.137106

Longitude (NAD 83): -104.968146

GROUND ELEVATION (FT. AMSL): NM

ABANDONMENT METHOD: Native Material



Drilling / Sample Method:

- Macro-Core
- Hand Auger
- Expendable Well Tip
- HydroPunch Groundwater Sampler

Laboratory Sample Types:

- Geotechnical Lab
- Analytical Chemistry Lab
- Geotechnical & Analytical Chemistry Lab



FLOWLINE ABANDONMENT FORM

SITE NAME: MDM 33-14 Flowline							DATE: 10/17/2024	REM. PROJECT #: 32449	WEATHER: Clear, 70's	
SITE DIRECTIONS: See Below							CLIENT: PDC			
LEGALS AND LAT/LONG: 40.137160, -104.968523							TASMAN PERSONNEL: SB			
SOIL TYPES: Clayey Sand - SC							SURFACE GRADIENT: East			
SOIL SAMPLING							FACILITY INFRASTRUCTURE			
Date/Time	Soil Sample ID	PID (ppm)	Visual	Olfactory	Photo?	Grab or Lab Sample?	EQUIPMENT	Quantity	Photo?	
10-17-2024 09:32	FL01R-S@4'	0.0	No Staining	No Odor	Yes	Lab	Above Ground Storage Tank (AST)	0		
10-17-2024 09:34	FL01-08@3'	0.0	No Staining	No Odor	Yes	Lab	Buried or Partially Buried Vessel	0		
10-17-2024 09:38	FL01-07@3'	0.0	No Staining	No Odor	Yes	Lab	Separator	0		
10-17-2024 09:57	FL01-06@5'	0.0	No Staining	Organic Odor	Yes	Lab	Emission Control Device (ECD)	0		
10-17-2024 12:05	FL01-05@5'	0.0	Organic Cont	No Odor	Yes	Lab	Dump Line	0		
10-17-2024 10:46	FL01-04@4'	0.0	No Staining	No Odor	Yes	Lab	Wellhead	0		
10-17-2024 10:57	FL01-03@4'	0.0	No Staining	No Odor	Yes	Grab	Flowline	1	✓	
10-17-2024 11:10	FL01-02@4'	0.0	No Staining	No Odor	Yes	Lab	Other:			
10-17-2024 11:13	FL01-01@4'	0.0	No Staining	No Odor	Yes	Grab	Soil Loads Removed			
10-17-2024 11:20	FL01R-W@4'	0.0	No Staining	No Odor	Yes	Lab	IMPACTED SOIL IDENTIFIED?			
10-17-2024 11:42	BKG01@0-6"	0.2	No Staining	No Odor	Yes	Lab	ESTIMATED VOLUME OF IMPACTS:			
10-17-2024 11:44	BKG01@2.5'	0.2	No Staining	No Odor	Yes	Lab	Date	Number	CY	
10-17-2024 11:46	BKG01@3'	0.1	No Staining	No Odor	Yes	Lab				
10-17-2024 11:48	BKG01@4'	0.0	No Staining	No Odor	Yes	Lab				
10-17-2024 11:50	BKG01@5'	0.0	No Staining	No Odor	Yes	Lab				
							Total Removed	0	0	
							Disposal Facility:			
							Groundwater Recovery			
							DATE GW ENCOUNTERED:		DEPTH:	
							GROUNDWATER IN CONTACT WITH IMPACTED SOIL?			
							LNAPL OR SHEEN OBSERVED ON GW?			
GROUNDWATER SAMPLING							Date	BBLs		
Date/Time	Groundwater Sample ID	Depth Collected	Turbid?	Sheen?	Odor?	Photo?				
10/17/2024 10:11	GW01@5'	5'	Medium Turbid	Light Sheen	None	Yes				
10/17/2024 12:14	GW02@4'	4'	Low Turbidity	None	None	Yes				
							Total Removed	0		
							Disposal Facility:			

GENERAL OBSERVATION FORM

 Site Area/AOC: MDM 33-14 Flowline Client: Noble

 Daily Forecast/Weather: Clear, 70's Personnel: SB

 Task/Location Description: Flowline Decommissioning & Soil Sampling Activities

Time	Description
08:00	On Site - Crew on Site
	Scope:
	Full removal of the MDM 33-14 Flowline (Approximate Flowline Length = 1,115 Feet)
	Samples were taken at the wellhead riser (FL01R-W@4') and along the flowline path (FL01-01 @3' - FL01-08@3').
	The flowline was sampled at the separator riser (FL01R-S@4')
	Three sample locations were in conflict with third party (DCP) lines, and had to be excavated via hydrovac: (FL01-08, FL01-07, and FL01-06)
	Groundwater samples were collected from the FL01-06 (GW01) and FL01-03 (GW02) locations. Groundwater samples will be submitted for laboratory analysis of BTEX, naphthalene, 1,2,4-trimethylbenzene, 1,3,5-trimethylbenzene, chloride, sulfate and total dissolved solids (TDS)
	Sample Lithology for BKG01 is as follows: 0-1': Tan, clayey sand, fine grain, well sorted, dry 1-3': Tan, clayey sand, fine grain, well sorted, moist 3-5': Tan, sand, fine to medium, moderately sorted, saturated
	This flowline is associated with the MDM 33, 34-14 Tank Battery (REM# 32453) decommissioned on 10-16-2024. The flowline riser at the separator (FL0R-S) was collected under the MDM 33-14 Flowline and will also be submitted with the MDM 33, 34-14 Tank Battery decommissioning data.
	The MDM 34-14 Flowline (REM# 32447) is scheduled to be decommissioned on Friday, 10-18-2024.
	Site Directions: At the intersection of CR 11 & CR 20, head west for 0.38 miles, then head North onto the At the intersection of CR 11 & CR 20, head west for 0.38 miles, then head North onto the PDC access road for 0.2 miles onto site

Need a photo log?



Need another General Observation Form?


Equipment ID: FL01R-S@4'

Equipment Type: Flowline

Material: Steel

Volume:
Contents: Oil/Gas/Water

Notes/Conditions:
Equipment ID: FL01-08@3'

Equipment Type: Flowline

Material: Steel

Volume:
Contents: Oil/Gas/Water



Notes/Conditions:





Equipment ID: FL01-07 @3'	Equipment Type: Flowline	
Material: Steel	Volume:	Contents: Oil/Gas/Water
Notes/Conditions:		



Equipment ID: FL01-06 @5', GW01 @5'	Equipment Type: Flowline	
Material: Steel	Volume:	Contents: Oil/Gas/Water
Notes/Conditions:		

					
Material: Steel	Volume:	Contents: Oil/Gas/Water	Material: Steel	Volume:	Contents: Oil/Gas/Water
Notes/Conditions:			Notes/Conditions:		

					
Equipment ID: FL01-03 @ 4', GW02 @ 4'		Equipment Type: Flowline	Equipment ID: FL01-02 @ 4'		Equipment Type: Flowline
Material: Steel	Volume:	Contents: Oil/Gas/Water	Material: Steel	Volume:	Contents: Oil/Gas/Water
Notes/Conditions:			Notes/Conditions:		


Equipment ID: FL01-01@4'

Equipment Type: Flowline

Material: Steel

Volume:
Contents: Oil/Gas/Water


Notes/Conditions:
Equipment ID: FL01R-W@4'

Equipment Type: Flowline

Material: Steel

Volume:
Contents: Oil/Gas/Water

Notes/Conditions:

					
Equipment ID: BKG01@0-6", 2.5', 3', 4', 5'		Equipment Type: <small>Background</small>	Equipment ID:		Equipment Type:
Material:	Volume:	Contents:	Material:	Volume:	Contents:
Notes/Conditions:			Notes/Conditions:		