



July 17, 2025

Kleinfelder Project No. 25002443.001A

Mr. Jake Janicek
QB Energy Operating, LLC
1001 17th Street #1600
Denver, Colorado 80202

**SUBJECT: Site Investigation Report
 QB Energy Operating, LLC
 Remediation Project Number: 36180
 Corral Creek 61S99W 29 SWSW Pad
 (Location Also Known as [A.k.a.] Corral Creek 4508 Wellhead; M29 199 Pad)
 Rio Blanco County, Colorado**

Dear Mr. Janicek:

Kleinfelder Inc. (Kleinfelder) performed soil sampling activities for facility closure at the Corral Creek 61S99W 29 SWSW Pad and associated Corral Creek 4508 Wellhead flowline piping, storage tanks, dumlplines, and process vessels located in Rio Blanco County, Colorado under contract by QB Energy Operating, LLC (QB Energy). Enclosed is the report of work complete for this effort.

Please do not hesitate to contact me at (970) 209-3420 or by email at TSchmalz@kleinfelder.com should you have questions or concerns.

Respectfully submitted,
KLEINFELDER, INC.

A handwritten signature in dark ink that reads "Tristan Schmalz". The signature is written in a cursive, flowing style. Below the signature is a horizontal line.

Tristan Schmalz
Project Manager I



**SITE INVESTIGATION REPORT
QB ENERGY OPERATING, LLC
REMEDIATION PROJECT NUMBER: 36180
CORRAL CREEK 61S99W 29SW SW PAD
(LOCATION A.K.A. CORRAL CREEK 4508 WELLHEAD; M29 199
PAD)
RIO BLANCO COUNTY, COLORADO**

KLEINFELDER PROJECT NO. 25002443.001A

July 17, 2025

**Copyright 2025 Kleinfelder
All Rights Reserved**

**ONLY THE CLIENT OR ITS DESIGNATED REPRESENTATIVES MAY USE THIS DOCUMENT AND ONLY FOR THE SPECIFIC PROJECT FOR WHICH THIS
REPORT WAS PREPARED.**

A Report Prepared for:

QB Energy Operating, LLC
1001 17th Street #1600
Denver, CO 80202

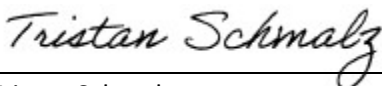
**SITE INVESTIGATION REPORT
QB ENERGY OPERATING, LLC
REMEDIATION PROJECT NUMBER: 36180
CORRAL CREEK 61S99W 29SW SW PAD
(LOCATION A.K.A. CORRAL CREEK 4508 WELLHEAD; M29 199 PAD)
RIO BLANCO COUNTY, COLORADO**

Prepared by:



Trevor Lakin
Professional I

Reviewed by:



Tristan Schmalz
Project Manager I

KLEINFELDER

707 17th Street, Suite 3000
Denver, Colorado 80202
P | 303.237.6601
F | 303.237.6602

July 17, 2025
Kleinfelder Project No. 25002443.001A

Contents

Page

1	INTRODUCTION	1
2	SITE LOCATION AND GEOLOGIC SETTING	2
3	FIELD ACTIVITIES	3
4	RESULTS	5
5	CONCLUSIONS AND RECOMMENDATIONS.....	6
6	LIMITATIONS	7

FIGURES

1	Topographical Map
2	Sample Location Map – Wellhead Assessment
3	Sample Location Map – Tank Battery Area Assessment
4	Sample Location Map – Separator Assessment
5	Sample Location Map – Meter House Assessment
6	Sample Location Map – Buried Drip Tank Assessment
7	Sample Location Map – Historic Pit Assessment
8	Sample Location Map – Off-Location Pipeline Assessment
9	Background Sample Location Map

TABLES

1	Sample Summary
2	Soil Analytical Results – Inorganic Analytes
3	Soil Analytical Results – Organic Analytes

SITE INVESTIGATION REPORT
QB ENERGY OPERATING, LLC
REMEDIATION PROJECT NUMBER: 36180
CORRAL CREEK 61S99W 29SWSW PAD
(LOCATION A.K.A. CORRAL CREEK 4508 WELLHEAD; M29 199 PAD)
RIO BLANCO COUNTY, COLORADO

1 INTRODUCTION

This document was prepared by Kleinfelder Inc. (Kleinfelder) on behalf of QB Energy Operating, LLC (QB Energy) to provide documentation of recent sampling support services conducted for the final closure of the Corral Creek 4508 Wellhead located on the Corral Creek 61S99W 29SWSW Pad in Rio Blanco County, Colorado (**Figure 1**).

Kleinfelder has been contracted by QB Energy to perform soil sampling support services to provide necessary information to complete the Colorado Energy and Carbon Management Commission (ECMC) Form 27 for their upstream oil and gas production facilities located in the Piceance Basin. QB Energy submitted ECMC Approved Form 27 Site Investigation and Remediation Workplans (documents 403815744, 404030966, and 404070858) as notifications to abandon the Corral Creek 4508 Wellhead (API #103-08907) and associated piping, storage tanks, dumphines, pit, and process vessels. QB Energy proposed soil sampling under ECMC 913.c.(9): Decommissioning of Oil and Gas Facilities and under ECMC 913.c.(1) Pit or Cuttings Trench closure. Kleinfelder collected subsequent soil samples on June 10, 2025, to further assess the buried drip tank area. Samples were analyzed by Pace Analytical National Laboratory (Pace) and results are reported herein.

2 SITE LOCATION AND GEOLOGIC SETTING

The Corral Creek 61S99W 29SWSW Pad is located within the Piceance Basin in Rio Blanco County, Colorado (SWSW, Section 29, Township 1 South, Range 99 West) (**Figure 1**). The Piceance Basin is a geologic structural basin consisting of sandstones and siltstones, containing reserves of coal, natural gas, and oil shale.

No surface water or groundwater was encountered during Kleinfelder's soil sampling activities. Based on field assessment and desktop review of the area, it is believed there is no reasonable pathway for groundwater within the investigation area. The nearest registered water well (permit #226468) is located approximately 1 mile east of the Corral Creek 4508 Wellhead and has a listed construction depth of 1,984 feet with no yield depth is listed. The nearest registered water well is approximately 400 feet lower in elevation than the Corral Creek 4508 Wellhead which resides on a promontory ridge. There are multiple registered wells associated with nearby oil and gas locations with similar constructed depths with no yield depth.

The general soil type within the release area was classified based on Kleinfelder's field observations using the Unified Soil Classification System (USCS) and were observed as organic clays of medium to high plasticity, organic silts. Topographical information is provided on **Figure 1**.

3 FIELD ACTIVITIES

As prescribed within the approved ECMC Form 27 Site Investigation and Remediation Workplans, Kleinfelder performed the following field activities at the Corral Creek 61S99W 29SWSW Pad on June 10, 2025.

- Collected four (4) grab assessment soil samples from the base of the excavation beneath the former buried drip tank [20250610-M29 199-(T03-BASE02)@10, 20250610-M29 199-(T03-BASE03)@10, 20250610-M29 199-(T03-BASE04)@10, and 20250610-M29 199-(T03-BASE05)@10] at 10 feet below ground surface (bgs);
- Field screened the soil at all sample locations using a photoionization detector (PID) and visual and olfactory observations; and
- Shipped the assessment soil samples to Pace to analyze for the ECMC Table 915-1 contaminants of concern.

QB Energy identified all soil sample locations prior to the June 2025 sampling event. A soil sample was previously collected from the base of the former buried drip tank excavation on September 19, 2024. Kleinfelder returned to the excavation on June 10, 2025, and collected four (4) subsequent soil samples from the base of the excavation as described above. Kleinfelder used an EOS Arrow 100 Submeter Global Navigation System Receiver (GNSS) to record latitude and longitude at each sample location. Comprehensive soil sample locations with sample depths are shown on **Figures 2-8**. Site specific background sample locations are shown on **Figure 9**.

Site assessment soil samples were collected using a stainless-steel hand trowel and placed into laboratory-supplied, 9-ounce jars with Teflon lids per sample. Each sample was collected directly from the hand trowel from the appropriate depth and placed into the glass jars. The samples were immediately placed on ice in a cooler. Standard chain-of-custody (COC) procedures were used during sampling and transportation to Pace in Mount Juliet, Tennessee (via FEDEX). Site assessment soil samples were analyzed for ECMC Table 915-1 contaminants of concern.

Sampling equipment (i.e., hand trowel, soil sampler, etc.) was washed with a solution of Liquinox® detergent, rinsed with tap water, and then distilled water between samples. During soil sampling

activities, Kleinfelder documented staining and/or odor observations, if any, and screened the soil with a PID. Kleinfelder placed the soil into a Ziploc® plastic bag directly from the hand auger for screening with the PID. The PID is a MiniRAE 3000®, which is owned and maintained by Kleinfelder. Prior to use, Kleinfelder calibrated the PID, which passed calibration. Soil sample conditions and locations are provided in **Table 1**.

4 RESULTS

Kleinfelder observed soil conditions within the buried drip tank area during the soil sampling activities. PID readings from the soil sample locations were all less than 4.5 parts per million. **Table 1** summarizes all samples and associated field observations, including PID readings.

Excluding pH, arsenic, and chromium VI, the June 10, 2025, soil sample analytical results indicate concentrations of contaminants of concern within the buried drip tank area did not exceed ECMC Table 915-1 Residential Soil Screening Levels (RSSLs) (**Table 2** and **Table 3**).

- pH and arsenic were detected at concentrations above their respective ECMC Table 915-1 RSSL concentrations. However, the concentrations were within their respective alternative allowable ranges as presented in ECMC Form 27 document 404204005.
- Chromium (VI) was detected at concentrations above the ECMC Table 915-1 RSSL concentration of 0.3 milligrams per kilogram (mg/kg) for chromium (VI) at three (3) of the four (4) soil samples. However, the concentrations are all less than the Practical Quantitation Limit (PQL) for chromium (VI), which is 1.0 mg/kg.

Comprehensive analytical results of all site assessment samples collected throughout the duration of the remediation project are summarized in **Table 2** and **Table 3** and were compared to ECMC Table 915-1 RSSLs as requested by QB Energy. Site-specific background soil samples are included in **Table 2**. Comprehensive sample locations are shown on **Figures 2-8**. Site-specific background sample locations are shown on **Figure 9**.

5 CONCLUSIONS AND RECOMMENDATIONS

Laboratory analytical results from soil samples collected within the buried drip tank area on June 10, 2025, indicate concentrations of only pH, arsenic, and chromium (VI) exceed their respective ECMC Table 915-1 RSSL concentrations.

- pH and arsenic were detected at concentrations above their respective ECMC Table 915-1 RSSL concentrations. However, the concentrations are within their respective alternative allowable ranges as presented in ECMC Form 27 document 404204005.
- Chromium VI was detected at concentrations above the ECMC Table 915-1 RSSL of 0.3 mg/kg at three (3) of the four (4) soil sample locations collected on June 10, 2025 (**Table 2**). However, the concentrations are all less than the PQL of 1.0 mg/kg for chromium (VI), which has been substituted for the RSSL as permitted in Table 915-1 Footnote 9.

Therefore, all concentrations of ECMC Table 915-1 contaminants of concern associated with all areas of the Corral Creek 4508 with the exception historic pit area are below their respective ECMC Table 915-1 RSSL, adjusted limit, and/or within their respective alternative allowable range. To address the historic pit area, please see ECMC Form 27 document 404204005 for QB Energy's request to consider ECMC Table 915-1 Footnote 3 based on the reclamation plan attached to document.

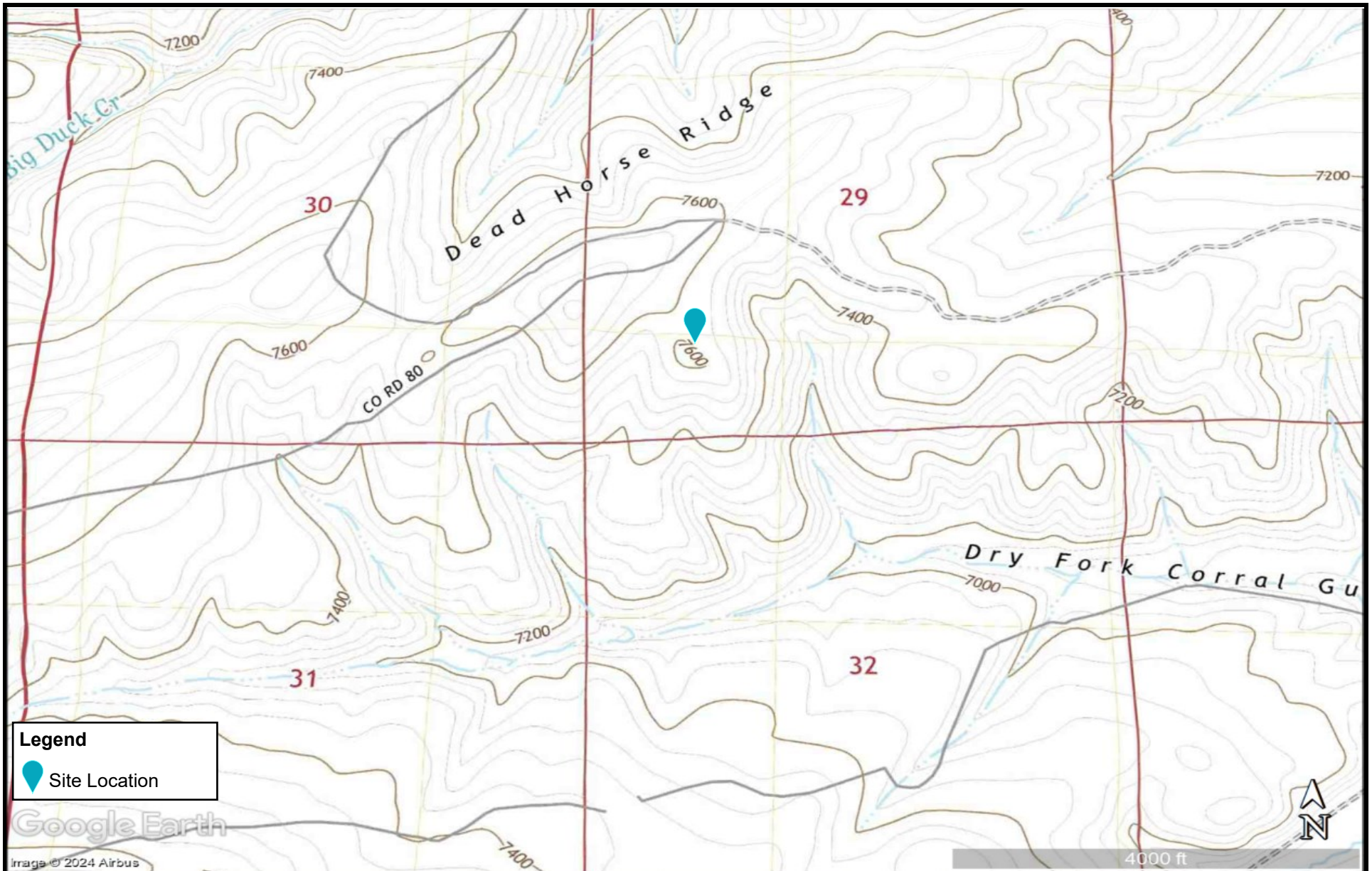
Therefore, the site investigation is complete for all areas of the Corral Creek 4508 Pad and Kleinfelder recommends QB Energy request a No Further Action designation for Remediation Project Number 36180.


6 LIMITATIONS

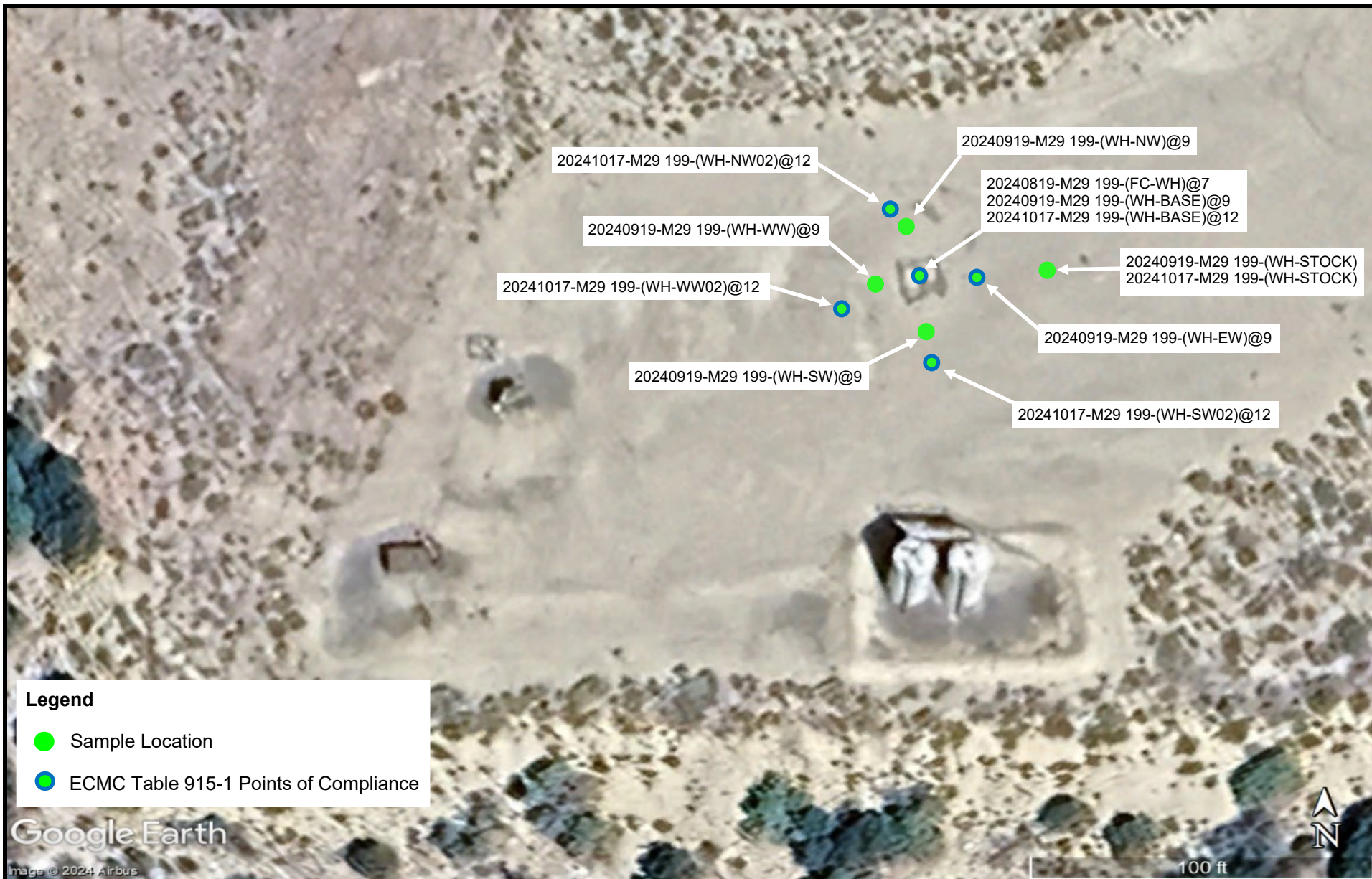
Kleinfelder offers various levels of investigative and engineering services to suit the varying needs of different clients. It should be recognized that definition and evaluation of geologic and environmental conditions are a difficult and inexact science. Judgments leading to conclusions and recommendations are generally made with incomplete knowledge of the subsurface conditions present due to the limitations of data from field studies. Although risk can never be eliminated, more detailed and extensive studies yield more information, which may help understand and manage the level of risk. Since detailed study and analysis involves greater expense, our clients participate in determining levels of service that provide adequate information for their purposes at acceptable levels of risk. More extensive studies, including subsurface studies or field tests, should be performed to reduce uncertainties. Acceptance of this report will indicate that QB Energy has reviewed the document and determined that it does not need or want a greater level of service than provided.


During the course of the performance of Kleinfelder's services, hazardous materials may have been discovered. Kleinfelder assumes no responsibility or liability whatsoever for any claim, loss of property value, damage, or injury that results from pre-existing hazardous materials being encountered or present on the project site, or from the discovery of such hazardous materials. Nothing contained in this report should be construed or interpreted as requiring Kleinfelder to assume the status of an owner, operator, or generator, or person who arranges for disposal, transport, storage, or treatment of hazardous materials within the meaning of any governmental statute, regulation, or order. QB Energy is solely responsible for directing notification of all governmental agencies, and the public at large, of the existence, release, treatment, or disposal of any hazardous materials observed at the project site, either before or during performance of Kleinfelder's services. QB Energy is responsible for directing all arrangements to lawfully store, treat, recycle, dispose, or otherwise handle hazardous materials, including cuttings and samples resulting from Kleinfelder's services.

FIGURES




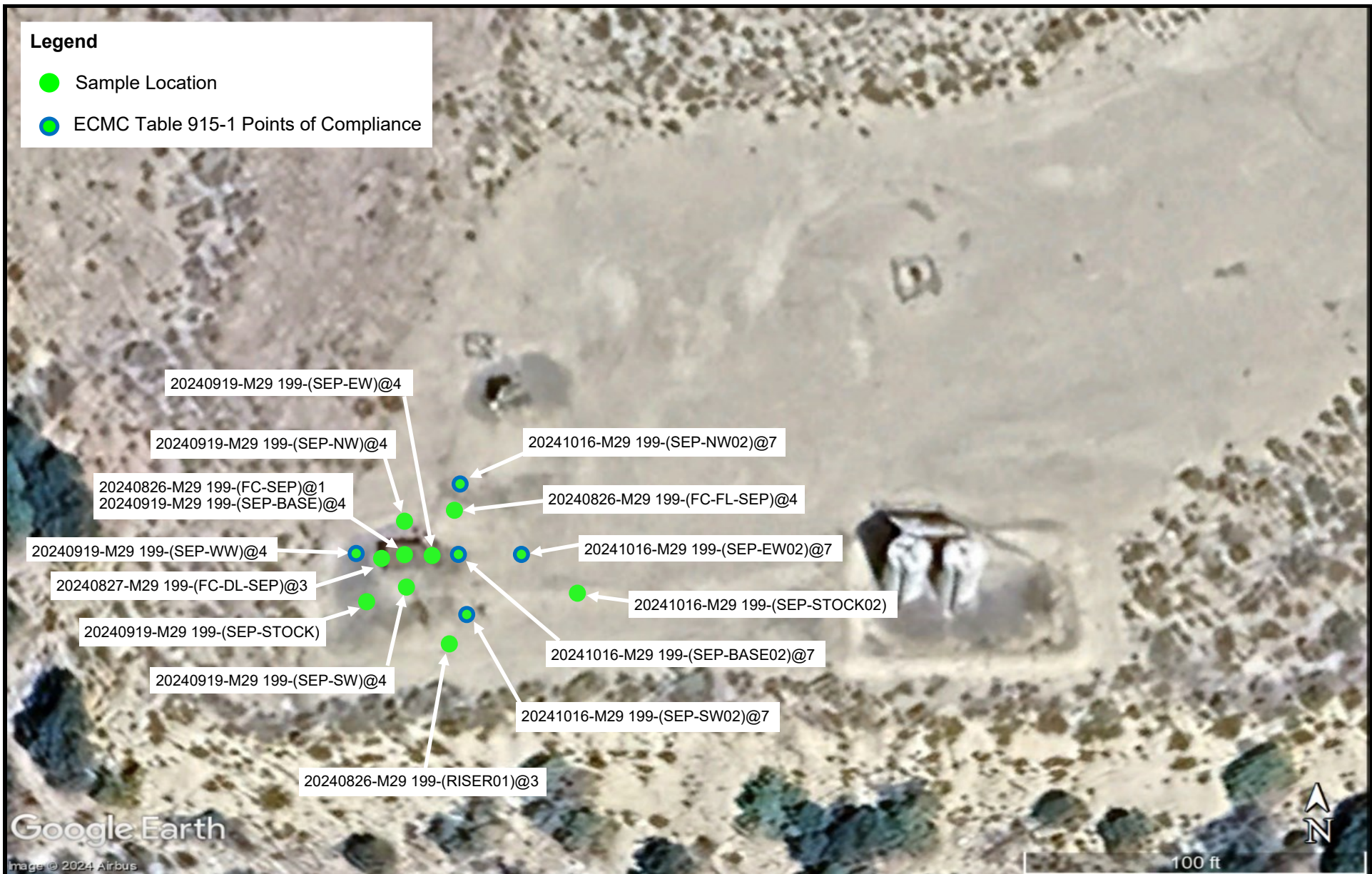
 <p>KLEINFELDER <i>Bright People. Right Solutions.</i></p> <p>www.kleinfelder.com</p>	PROJECT NO.	25002443.001A	Topographical Map	FIGURE 1
	DRAWN:	7/17/2025		
	DRAWN BY:	T. Lakin	QB Energy Operating, LLC Corral Creek-61S99W 29SWSW Pad (Corral Creek 4508 Wellhead) Remediation Project Number: 36180 SWSW Sec. 29 T1S R99W Rio Blanco County, Colorado	
	CHECKED BY:	T. Schmalz		
	FILE NAME:	CC 4508_Figure 1.pub		




 <p>KLEINFELDER <i>Bright People. Right Solutions.</i></p> <p>www.kleinfelder.com</p>	PROJECT NO.	25002443.001A	Sample Location Map Wellhead Assessment	FIGURE 2
	DRAWN:	7/17/2025		
	DRAWN BY:	T. Lakin	QB Energy Operating, LLC Corral Creek-61S99W 29SWSW Pad (Corral Creek 4508 Wellhead) Remediation Project Number: 36180 SWSW Sec. 29 T1S R99W Rio Blanco County, Colorado	
	CHECKED BY:	J. Veith		
	FILE NAME:	Corral Creek 4508 Sample Map.pub		




 <p>KLEINFELDER <i>Bright People. Right Solutions.</i></p> <p>www.kleinfelder.com</p>	PROJECT NO.	25002443.001A	Sample Location Map Tank Battery Area Assessment	FIGURE 3
	DRAWN:	7/17/2025		
	DRAWN BY:	T. Lakin	QB Energy Operating, LLC Corral Creek-61S99W 29SWSW Pad (Corral Creek 4508 Wellhead) Remediation Project Number: 36180 SWSW Sec. 29 T1S R99W Rio Blanco County, Colorado	
	CHECKED BY:	J. Veith		
	FILE NAME:	Corral Creek 4508 Sample Map.pub		




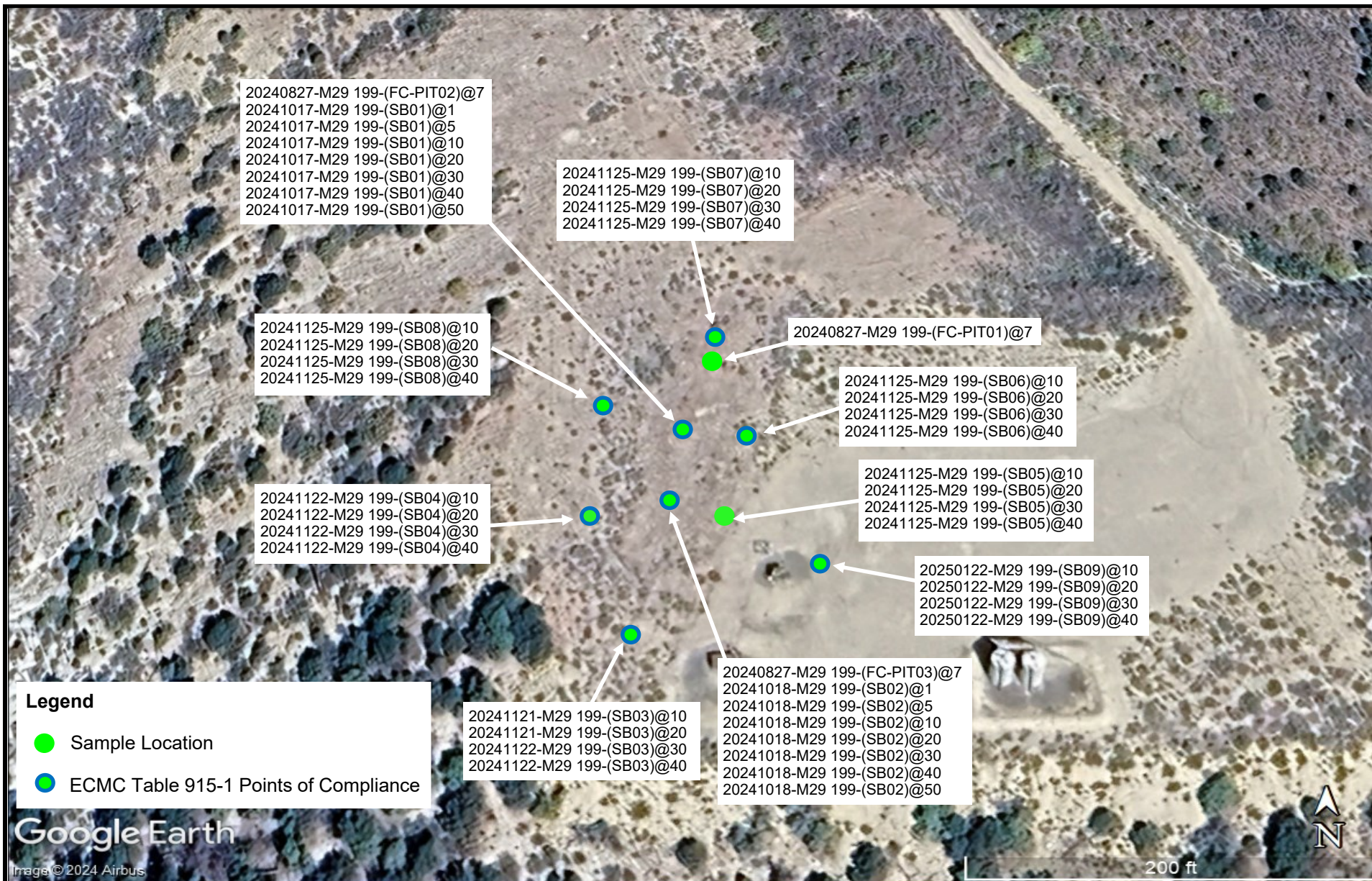
 <p>KLEINFELDER Bright People. Right Solutions.</p> <p>www.kleinfelder.com</p>	PROJECT NO.	25002443.001A	Sample Location Map Separator Assessment	FIGURE 4
	DRAWN:	7/17/2025		
	DRAWN BY:	T. Lakin	QB Energy Operating, LLC Corral Creek-61S99W 29SWSW Pad (Corral Creek 4508 Wellhead) Remediation Project Number: 36180 SWSW Sec. 29 T1S R99W Rio Blanco County, Colorado	
	CHECKED BY:	J. Veith		
	FILE NAME:	Corral Creek 4508 Sample Map.pub		




 <p>KLEINFELDER <i>Bright People. Right Solutions.</i></p> <p>www.kleinfelder.com</p>	PROJECT NO.	25002443.001A	Sample Location Map Meter House Assessment	FIGURE 5
	DRAWN:	7/17/2025		
	DRAWN BY:	T. Lakin	QB Energy Operating, LLC Corral Creek-61S99W 29SWSW Pad (Corral Creek 4508 Wellhead) Remediation Project Number: 36180 SWSW Sec. 29 T1S R99W Rio Blanco County, Colorado	
	CHECKED BY:	J. Veith		
	FILE NAME:	Corral Creek 4508 Sample Map.pub		




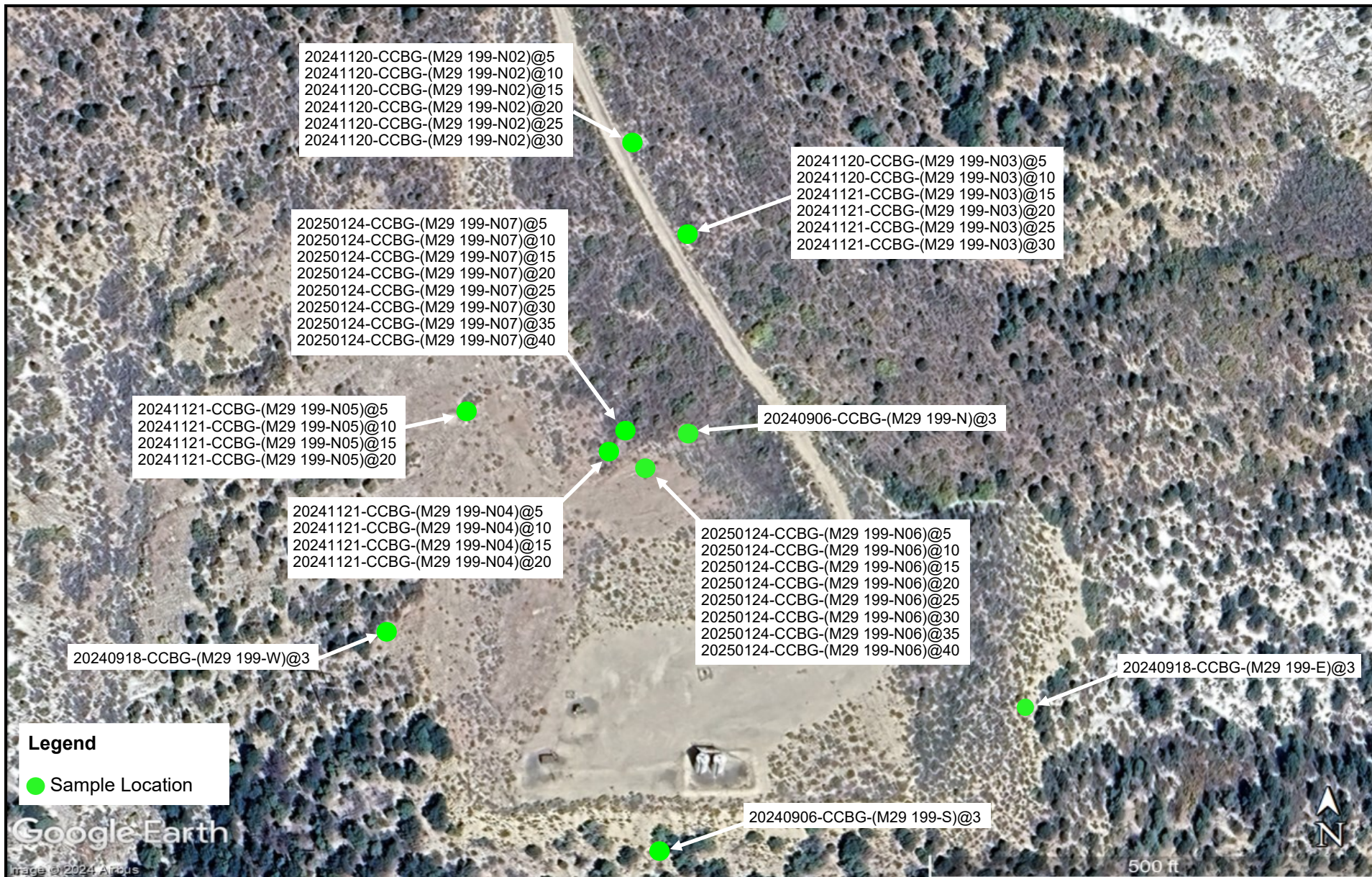
 <p>KLEINFELDER <i>Bright People. Right Solutions.</i></p> <p>www.kleinfelder.com</p>	PROJECT NO.	25002443.001A	Sample Location Map Buried Drip Tank Assessment	FIGURE 6
	DRAWN:	7/17/2025		
	DRAWN BY:	T. Lakin		
	CHECKED BY:	T. Schmalz	QB Energy Operating, LLC Corral Creek-61S99W 29SWSW Pad (Corral Creek 4508 Wellhead) Remediation Project Number: 36180 SWSW Sec. 29 T1S R99W Rio Blanco County, Colorado	
	FILE NAME:	Corral Creek 4508 Sample Map.pub		




 <div>KLEINFELDER <i>Bright People. Right Solutions.</i></div> <div>www.kleinfelder.com</div>	PROJECT NO.	25002443.001A	Sample Location Map Historic Pit Assessment	FIGURE 7
	DRAWN:	7/17/2025		
	DRAWN BY:	T. Lakin		
	CHECKED BY:	J. Veith		
	FILE NAME:	Corral Creek 4508 Sample Map.pub	QB Energy Operating, LLC Corral Creek-61S99W 29SWSW Pad (Corral Creek 4508 Wellhead) Remediation Project Number: 36180 SWSW Sec. 29 T1S R99W Rio Blanco County, Colorado	



 <p>KLEINFELDER <i>Bright People. Right Solutions.</i></p> <p>www.kleinfelder.com</p>	PROJECT NO.	25002443.001A	Sample Location Map Off-Location Pipeline Assessment	FIGURE 8
	DRAWN:	7/17/2025		
	DRAWN BY:	T. Lakin		
	CHECKED BY:	J. Veith	QB Energy Operating, LLC Corral Creek-61S99W 29SWSW Pad (Corral Creek 4508 Wellhead) Remediation Project Number: 36180 SWSW Sec. 29 T1S R99W Rio Blanco County, Colorado	
	FILE NAME:	Corral Creek 4508 Sample Map.pub		



<div><p>KLEINFELDER <i>Bright People. Right Solutions.</i></p><p>www.kleinfelder.com</p></div>	PROJECT NO.	25002443.001A	Background Sample Location Map	FIGURE 9
	DRAWN:	7/17/2025		
	DRAWN BY:	T. Lakin		
	CHECKED BY:	J. Veith	QB Energy Operating, LLC Corral Creek-61S99W 29SWSW Pad (Corral Creek 4508 Wellhead) Remediation Project Number: 36180 SWSW Sec. 29 T1S R99W Rio Blanco County, Colorado	
	FILE NAME:	Corral Creek 4508 Sample Map.pub		

TABLES



TABLE 1- SAMPLE SUMMARY
QB ENERGY OPERATING, LLC
CORRAL CREEK-61S99W 29SWSW PAD (CORRAL CREEK 4508 WELLHEAD)
REMEDATION PROJECT NUMBER: 36180
SWSW SEC. 29 T1S R99W
RIO BLANCO COUNTY, COLORADO

Sample ID	Sample Type	Sample Date	Latitude	Longitude	PID Reading (PPM)	Hydrocarbon Odor Detected (Y/N)	Soil Staining Observed (Y/N)	Submitted for Laboratory Analysis (Y/N)	Comments
20240906-CCBG-(M29 199-N)@3	Background	9/6/2024	39.93070082	-108.53393772	N/A	N/A	N/A	Y	None
20240906-CCBG-(M29 199-S)@3	Background	9/6/2024	39.92943015	-108.53401228	N/A	N/A	N/A	Y	None
20240918-CCBG-(M29 199-E)@3	Background	9/18/2024	39.92983574	-108.53286144	N/A	N/A	N/A	Y	None
20240918-CCBG-(M29 199-W)@3	Background	9/18/2024	39.93005951	-108.53492288	N/A	N/A	N/A	Y	None
20241120-CCBG-(M29 199-N02)@5	Background	11/20/2024	39.93160042	-108.53414504	N/A	N/A	N/A	Y	None
20241120-CCBG-(M29 199-N02)@10	Background	11/20/2024	39.93160042	-108.53414504	N/A	N/A	N/A	Y	None
20241120-CCBG-(M29 199-N02)@15	Background	11/20/2024	39.93160042	-108.53414504	N/A	N/A	N/A	Y	None
20241120-CCBG-(M29 199-N02)@20	Background	11/20/2024	39.93160042	-108.53414504	N/A	N/A	N/A	Y	None
20241120-CCBG-(M29 199-N02)@25	Background	11/20/2024	39.93160042	-108.53414504	N/A	N/A	N/A	Y	None
20241120-CCBG-(M29 199-N02)@30	Background	11/20/2024	39.93160042	-108.53414504	N/A	N/A	N/A	Y	None
20241120-CCBG-(M29 199-N03)@5	Background	11/20/2024	39.93160042	-108.53414504	N/A	N/A	N/A	Y	None
20241120-CCBG-(M29 199-N03)@10	Background	11/20/2024	39.93160042	-108.53414504	N/A	N/A	N/A	Y	None
20241121-CCBG-(M29 199-N03)@15	Background	11/21/2024	39.93160042	-108.53414504	N/A	N/A	N/A	Y	None
20241121-CCBG-(M29 199-N03)@20	Background	11/21/2024	39.93160042	-108.53414504	N/A	N/A	N/A	Y	None
20241121-CCBG-(M29 199-N03)@25	Background	11/21/2024	39.93160042	-108.53414504	N/A	N/A	N/A	Y	None
20241121-CCBG-(M29 199-N03)@30	Background	11/21/2024	39.93160042	-108.53414504	N/A	N/A	N/A	Y	None
20241121-CCBG-(M29 199-N04)@5	Background	11/21/2024	39.93063216	-108.53416300	N/A	N/A	N/A	Y	None
20241121-CCBG-(M29 199-N04)@10	Background	11/21/2024	39.93063216	-108.53416300	N/A	N/A	N/A	Y	None
20241121-CCBG-(M29 199-N04)@15	Background	11/21/2024	39.93063216	-108.53416300	N/A	N/A	N/A	Y	None
20241121-CCBG-(M29 199-N04)@20	Background	11/21/2024	39.93063216	-108.53416300	N/A	N/A	N/A	Y	None
20241121-CCBG-(M29 199-N05)@5	Background	11/21/2024	39.93073340	-108.53463994	N/A	N/A	N/A	Y	None
20241121-CCBG-(M29 199-N05)@10	Background	11/21/2024	39.93073340	-108.53463994	N/A	N/A	N/A	Y	None
20241121-CCBG-(M29 199-N05)@15	Background	11/21/2024	39.93073340	-108.53463994	N/A	N/A	N/A	Y	None
20241121-CCBG-(M29 199-N05)@20	Background	11/21/2024	39.93073340	-108.53463994	N/A	N/A	N/A	Y	None
20250124-CCBG-(M29 199-N06)@5	Background	1/24/2025	39.93056243	-108.53406068	N/A	N/A	N/A	Y	None
20250124-CCBG-(M29 199-N06)@10	Background	1/24/2025	39.93056243	-108.53406068	N/A	N/A	N/A	Y	None
20250124-CCBG-(M29 199-N06)@15	Background	1/24/2025	39.93056243	-108.53406068	N/A	N/A	N/A	Y	None
20250124-CCBG-(M29 199-N06)@20	Background	1/24/2025	39.93056243	-108.53406068	N/A	N/A	N/A	Y	None
20250124-CCBG-(M29 199-N06)@25	Background	1/24/2025	39.93056243	-108.53406068	N/A	N/A	N/A	Y	None
20250124-CCBG-(M29 199-N06)@30	Background	1/24/2025	39.93056243	-108.53406068	N/A	N/A	N/A	Y	None
20250124-CCBG-(M29 199-N06)@35	Background	1/24/2025	39.93056243	-108.53406068	N/A	N/A	N/A	Y	None
20250124-CCBG-(M29 199-N06)@40	Background	1/24/2025	39.93056243	-108.53406068	N/A	N/A	N/A	Y	None
20250124-CCBG-(M29 199-N07)@5	Background	1/24/2025	39.93065078	-108.53412887	N/A	N/A	N/A	Y	None
20250124-CCBG-(M29 199-N07)@10	Background	1/24/2025	39.93065078	-108.53412887	N/A	N/A	N/A	Y	None



TABLE 1- SAMPLE SUMMARY
QB ENERGY OPERATING, LLC
CORRAL CREEK-61S99W 29SWSW PAD (CORRAL CREEK 4508 WELLHEAD)
REMEDIATION PROJECT NUMBER: 36180
SWSW SEC. 29 T1S R99W
RIO BLANCO COUNTY, COLORADO

Sample ID	Sample Type	Sample Date	Latitude	Longitude	PID Reading (PPM)	Hydrocarbon Odor Detected (Y/N)	Soil Staining Observed (Y/N)	Submitted for Laboratory Analysis (Y/N)	Comments
20250124-CCBG-(M29 199-N07)@15	Background	1/24/2025	39.93065078	-108.53412887	N/A	N/A	N/A	Y	None
20250124-CCBG-(M29 199-N07)@20	Background	1/24/2025	39.93065078	-108.53412887	N/A	N/A	N/A	Y	None
20250124-CCBG-(M29 199-N07)@25	Background	1/24/2025	39.93065078	-108.53412887	N/A	N/A	N/A	Y	None
20250124-CCBG-(M29 199-N07)@30	Background	1/24/2025	39.93065078	-108.53412887	N/A	N/A	N/A	Y	None
20250124-CCBG-(M29 199-N07)@35	Background	1/24/2025	39.93065078	-108.53412887	N/A	N/A	N/A	Y	None
20250124-CCBG-(M29 199-N07)@40	Background	1/24/2025	39.93065078	-108.53412887	N/A	N/A	N/A	Y	None
20240819-M29 199-(FC-WH)@7	Wellhead Assessment	8/19/2024	39.929985	108.533871	3.3	N	N	Y	Cut and Capped Wellhead
20240919-M29 199-(WH-BASE)@9	Wellhead Assessment	9/19/2024	39.92998500	-108.53387100	1.2	N	N	Y	None
20240919-M29 199-(WH-EW)@9	Wellhead Assessment	9/19/2024	39.93003462	-108.53379732	< 1	N	N	Y	None
20240919-M29 199-(WH-NW)@9	Wellhead Assessment	9/19/2024	39.93006827	-108.53386177	1.4	N	N	Y	None
20240919-M29 199-(WH-SW)@9	Wellhead Assessment	9/19/2024	39.92993182	-108.53386329	< 1	N	N	Y	None
20240919-M29 199-(WH-WW)@9	Wellhead Assessment	9/19/2024	39.93000454	-108.53392243	< 1	N	N	Y	None
20241017-M29 199-(WH-BASE)@12	Wellhead Assessment	10/17/2024	39.92998500	-108.53387100	1.2	N	N	Y	None
20241017-M29 199-(WH-NW02)@12	Wellhead Assessment	10/17/2024	39.93002384	-108.53393649	< 1	N	N	Y	None
20241017-M29 199-(WH-SW02)@12	Wellhead Assessment	10/17/2024	39.92991753	-108.53383910	< 1	N	N	Y	None
20241017-M29 199-(WH-WW02)@12	Wellhead Assessment	10/17/2024	39.92993938	-108.53393451	< 1	N	N	Y	None
20240919-M29 199-(WH-STOCK)	Wellhead Assessment	9/19/2024	39.92999528	-108.53372903	< 1	N	N	Y	None
20241017-M29 199-(WH-STOCK)	Wellhead Assessment	10/17/2024	39.92999528	-108.53372903	8.8	Y	N	Y	None
20240827-M29 199-(FC-FL-T)@3	Above Ground Storage Tank Assessment	8/27/2024	39.92972125	-108.53386155	1611	Y	Y	Y	None



TABLE 1- SAMPLE SUMMARY
QB ENERGY OPERATING, LLC
CORRAL CREEK-61S99W 29SWSW PAD (CORRAL CREEK 4508 WELLHEAD)
REMEDIATION PROJECT NUMBER: 36180
SWSW SEC. 29 T1S R99W
RIO BLANCO COUNTY, COLORADO

Sample ID	Sample Type	Sample Date	Latitude	Longitude	PID Reading (PPM)	Hydrocarbon Odor Detected (Y/N)	Soil Staining Observed (Y/N)	Submitted for Laboratory Analysis (Y/N)	Comments
20240906-M29 199-(FC-T01)@1	Above Ground Storage Tank Assessment	9/6/2024	39.92970599	-108.53382849	< 1	N	N	Y	None
20240906-M29 199-(FC-T02)@1	Above Ground Storage Tank Assessment	9/6/2024	39.92970438	-108.53390126	< 1	N	N	Y	None
20240919-M29 199-(FL-T-BASE)@5	Above Ground Storage Tank Assessment	9/19/2024	39.92972026	-108.53386155	< 1	N	N	Y	None
20240919-M29 199-(FL-T-EW)@5	Above Ground Storage Tank Assessment	9/19/2024	39.92972798	-108.53383076	< 1	N	N	Y	None
20240919-M29 199-(FL-T-NW)@5	Above Ground Storage Tank Assessment	9/19/2024	39.92975700	-108.53384218	< 1	N	N	Y	None
20240919-M29 199-(FL-T-SW)@5	Above Ground Storage Tank Assessment	9/19/2024	39.92969802	-108.53386449	< 1	N	N	Y	None
20240919-M29 199-(FL-T-WW)@5	Above Ground Storage Tank Assessment	9/19/2024	39.92972182	-108.53388099	< 1	N	N	Y	None
20241015-M29 199-(FL-T-BASE02)@8	Above Ground Storage Tank Assessment	10/15/2024	39.92971311	-108.53380883	< 1	N	N	Y	None
20241015-M29 199-(FL-T-EW02)@8	Above Ground Storage Tank Assessment	10/15/2024	39.92971864	-108.53377740	1.3	N	N	Y	None
20241015-M29 199-(FL-T-NW02)@8	Above Ground Storage Tank Assessment	10/15/2024	39.92976334	-108.53381200	< 1	N	N	Y	None
20241015-M29 199-(FL-T-SW02)@8	Above Ground Storage Tank Assessment	10/15/2024	39.92966509	-108.53381372	< 1	N	N	Y	None



TABLE 1- SAMPLE SUMMARY
QB ENERGY OPERATING, LLC
CORRAL CREEK-61S99W 29SWSW PAD (CORRAL CREEK 4508 WELLHEAD)
REMEDATION PROJECT NUMBER: 36180
SWSW SEC. 29 T1S R99W
RIO BLANCO COUNTY, COLORADO

Sample ID	Sample Type	Sample Date	Latitude	Longitude	PID Reading (PPM)	Hydrocarbon Odor Detected (Y/N)	Soil Staining Observed (Y/N)	Submitted for Laboratory Analysis (Y/N)	Comments
20240919-(M29 199 -(FL-T-STOCK)	Above Ground Storage Tank Assessment	9/19/2024	39.92979480	-108.53389212	< 1	N	N	Y	None
20241015-M29 199-(FL-T-STOCK02)	Above Ground Storage Tank Assessment	10/15/2024	39.92981682	-108.53402350	< 1	N	N	Y	None
20240826-M29 199-(BASE01)@3	Flowline Excavation Assessment	8/26/2024	39.92970758	-108.53414002	< 1	N	N	N	None
20240826-M29 199-(BASE02)@3	Flowline Excavation Assessment	8/26/2024	39.92988797	-108.53408641	< 1	N	N	N	None
20240826-M29 199-(BASE03)@6	Flowline Excavation Assessment	8/26/2024	39.93010965	-108.53428261	< 1	N	N	N	None
20240826-M29 199-(BASE04)@6	Flowline Excavation Assessment	8/26/2024	39.93045633	-108.53430570	< 1	N	N	N	None
20240826-M29 199-(FC-SEP)@1	Separator Assessment	8/26/2024	39.92972278	-108.5343696	4.6	N	N	Y	None
20240826-M29 199-(FC-FL-SEP)@4	Separator Assessment	8/26/2024	39.92977145	-108.5342974	< 1	N	N	Y	None
20240827-M29 199-(FC-DL-SEP)@3	Separator Assessment	8/27/2024	39.92972026	-108.53440670	1.3	N	N	Y	None
20240826-M29 199-(RISER01)@3	Separator Assessment	8/26/2024	39.92965261	-108.5343255	< 1	N	N	Y	None
20240919-M29 199-(SEP-BASE)@4	Separator Assessment	9/19/2024	39.92972278	-108.53436960	< 1	N	N	Y	None
20240919-M29 199-(SEP-EW)@4	Separator Assessment	9/19/2024	39.92974265	-108.53433958	< 1	N	N	Y	None
20240919-M29 199-(SEP-NW)@4	Separator Assessment	9/19/2024	39.92976206	-108.53436238	< 1	N	N	Y	None
20240919-M29 199-(SEP-SW)@4	Separator Assessment	9/19/2024	39.92970663	-108.53434460	< 1	N	N	Y	None



TABLE 1- SAMPLE SUMMARY
QB ENERGY OPERATING, LLC
CORRAL CREEK-61S99W 29SWSW PAD (CORRAL CREEK 4508 WELLHEAD)
REMEDATION PROJECT NUMBER: 36180
SWSW SEC. 29 T1S R99W
RIO BLANCO COUNTY, COLORADO

Sample ID	Sample Type	Sample Date	Latitude	Longitude	PID Reading (PPM)	Hydrocarbon Odor Detected (Y/N)	Soil Staining Observed (Y/N)	Submitted for Laboratory Analysis (Y/N)	Comments
20240919-M29 199-(SEP-WW)@4	Separator Assessment	9/19/2024	39.92972326	-108.53437439	< 1	N	N	Y	None
20241016-M29 199-(SEP-BASE02)@7	Separator Assessment	10/16/2024	39.92974519	-108.53431181	< 1	N	N	Y	None
20241016-M29 199-(SEP-EW02)@7	Separator Assessment	10/16/2024	39.92974319	-108.53427140	< 1	N	N	Y	None
20241016-M29 199-(SEP-NW02)@7	Separator Assessment	10/16/2024	39.92978980	-108.53432467	< 1	N	N	Y	None
20241016-M29 199-(SEP-SW02)@7	Separator Assessment	10/16/2024	39.92968799	-108.53429283	3.3	N	N	Y	None
20240919-M29 199-(SEP-STOCK)	Separator Assessment	9/19/2024	39.92969273	-108.53440253	< 1	N	N	Y	None
20241016-M29 199-(SEP-STOCK02)	Separator Assessment	10/16/2024	39.92969505	-108.53419908	< 1	N	N	Y	None
20240826-M29 199-(FC-MH)@1	Meter House Assessment	8/26/2024	39.92986284	-108.53427944	< 1	N	N	Y	None
20240826-M29 199-(FC-MH-FLE)@4	Meter House Assessment	8/26/2024	39.92988401	-108.53422668	< 1	N	N	Y	None
20240826-M29 199-(FC-MH-FLW)@4	Meter House Assessment	8/26/2024	39.92987332	-108.53431585	< 1	N	N	Y	None
20240919-M29 199-(MH-BASE)@4	Meter House Assessment	9/19/2024	39.92986284	-108.53427944	< 1	N	N	Y	None
20240919-M29 199-(MH-EW)@4	Meter House Assessment	9/19/2024	39.92989446	-108.53420894	< 1	N	N	Y	None
20240919-M29 199-(MH-NW)@4	Meter House Assessment	9/19/2024	39.92991416	-108.53421732	< 1	N	N	Y	None
20240919-M29 199-(MH-SW)@4	Meter House Assessment	9/19/2024	39.92988778	-108.53422010	< 1	N	N	Y	None
20240919-M29 199-(MH-WW)@4	Meter House Assessment	9/19/2024	39.92988734	-108.53425077	13.8	N	N	Y	None
20240919-M29 199-(MH-STOCK)	Meter House Assessment	9/19/2024	39.92984000	-108.53421000	< 1	N	N	Y	None



TABLE 1- SAMPLE SUMMARY
QB ENERGY OPERATING, LLC
CORRAL CREEK-61S99W 29SWSW PAD (CORRAL CREEK 4508 WELLHEAD)
REMEDIATION PROJECT NUMBER: 36180
SWSW SEC. 29 T1S R99W
RIO BLANCO COUNTY, COLORADO

Sample ID	Sample Type	Sample Date	Latitude	Longitude	PID Reading (PPM)	Hydrocarbon Odor Detected (Y/N)	Soil Staining Observed (Y/N)	Submitted for Laboratory Analysis (Y/N)	Comments
20240826-M29 199-(FC-T03)@6	Buried Trip Tank Assessment	8/26/2024	39.92993699	-108.53430173	< 1	N	N	Y	None
20240919-M29 199-(T03-BASE)@10	Buried Trip Tank Assessment	9/19/2024	39.92993699	-108.53430173	1.1	N	N	Y	None
20240919-M29 199-(T03-EW)@10	Buried Trip Tank Assessment	9/19/2024	39.92993423	-108.53424615	2.9	N	N	Y	None
20240919-M29 199-(T03-NW)@10	Buried Trip Tank Assessment	9/19/2024	39.92998884	-108.53428977	< 1	N	N	Y	None
20240919-M29 199-(T03-SW)@10	Buried Trip Tank Assessment	9/19/2024	39.92989268	-108.53428596	1.1	N	N	Y	None
20240919-M29 199-(T03-WW)@10	Buried Trip Tank Assessment	9/19/2024	39.92992335	-108.53435484	1.1	N	N	Y	None
20240919-M29 199-(T03-STOCK)	Buried Trip Tank Assessment	9/19/2024	39.92997072	-108.53419475	49.9	Y	N	Y	None
20250610-M29 199-(T03-BASE02)@10	Buried Trip Tank Assessment	6/10/2025	39.92994990	-108.53430252	2.2	N	N	Y	None
20250610-M29 199-(T03-BASE03)@10	Buried Trip Tank Assessment	6/10/2025	39.92993500	-108.53431745	3.2	N	N	Y	None
20250610-M29 199-(T03-BASE04)@10	Buried Trip Tank Assessment	6/10/2025	39.92993116	-108.53427994	1.3	N	N	Y	None
20250610-M29 199-(T03-BASE05)@10	Buried Trip Tank Assessment	6/10/2025	39.92992579	-108.53429167	4.5	N	N	Y	None



TABLE 1- SAMPLE SUMMARY
QB ENERGY OPERATING, LLC
CORRAL CREEK-61S99W 29SWSW PAD (CORRAL CREEK 4508 WELLHEAD)
REMEDATION PROJECT NUMBER: 36180
SWSW SEC. 29 T1S R99W
RIO BLANCO COUNTY, COLORADO

Sample ID	Sample Type	Sample Date	Latitude	Longitude	PID Reading (PPM)	Hydrocarbon Odor Detected (Y/N)	Soil Staining Observed (Y/N)	Submitted for Laboratory Analysis (Y/N)	Comments
20240827-M29 199-(FC-PIT01)@7	Historic Pit Assessment	8/27/2024	39.93028313	-108.53437844	< 1	N	N	Y	None
20240827-M29 199-(FC-PIT02)@7	Historic Pit Assessment	8/27/2024	39.93013551	-108.53442707	1.4	N	N	Y	None
20240827-M29 199-(FC-PIT03)@7	Historic Pit Assessment	8/27/2024	39.92999712	-108.53447724	3.1	Y	N	Y	Soil appeared grey in color
20241017-M29 199-(SB01)@1	Historic Pit Assessment	10/17/2024	39.93013551	-108.53442707	10.5	N	N	Y	None
20241017-M29 199-(SB01)@5	Historic Pit Assessment	10/17/2024	39.93013551	-108.53442707	6.3	N	N	Y	None
20241017-M29 199-(SB01)@10	Historic Pit Assessment	10/17/2024	39.93013551	-108.53442707	7.6	Y	N	Y	Traces of pit liner tape
20241017-M29 199-(SB01)@20	Historic Pit Assessment	10/17/2024	39.93013551	-108.53442707	9.9	N	N	Y	None
20241017-M29 199-(SB01)@30	Historic Pit Assessment	10/17/2024	39.93013551	-108.53442707	8.8	Y	N	Y	Slight odor
20241017-M29 199-(SB01)@40	Historic Pit Assessment	10/17/2024	39.93013551	-108.53442707	1.7	N	N	Y	None
20241017-M29 199-(SB01)@50	Historic Pit Assessment	10/17/2024	39.93013551	-108.53442707	1.9	N	N	Y	None
20241018-M29 199-(SB02)@1	Historic Pit Assessment	10/18/2024	39.92999712	-108.53447724	< 1	N	N	Y	None
20241018-M29 199-(SB02)@5	Historic Pit Assessment	10/18/2024	39.92999712	-108.53447724	2.2	Y	Y	Y	Slight odor, grey in color
20241018-M29 199-(SB02)@10	Historic Pit Assessment	10/18/2024	39.92999712	-108.53447724	30.6	Y	Y	Y	Odor, grey in color
20241018-M29 199-(SB02)@20	Historic Pit Assessment	10/18/2024	39.92999712	-108.53447724	< 1	Y	N	Y	Slight odor
20241018-M29 199-(SB02)@30	Historic Pit Assessment	10/18/2024	39.92999712	-108.53447724	1.3	N	N	Y	None
20241018-M29 199-(SB02)@40	Historic Pit Assessment	10/18/2024	39.92999712	-108.53447724	1.1	N	N	Y	None
20241018-M29 199-(SB02)@50	Historic Pit Assessment	10/18/2024	39.92999712	-108.53447724	1.8	N	N	Y	None



TABLE 1- SAMPLE SUMMARY
QB ENERGY OPERATING, LLC
CORRAL CREEK-61S99W 29SWSW PAD (CORRAL CREEK 4508 WELLHEAD)
REMEDATION PROJECT NUMBER: 36180
SWSW SEC. 29 T1S R99W
RIO BLANCO COUNTY, COLORADO

Sample ID	Sample Type	Sample Date	Latitude	Longitude	PID Reading (PPM)	Hydrocarbon Odor Detected (Y/N)	Soil Staining Observed (Y/N)	Submitted for Laboratory Analysis (Y/N)	Comments
20241121-M29 199-(SB03)@5	Historic Pit Assessment	11/21/2024	39.92976705	-108.53453530	< 1	N	N	N	None
20241121-M29 199-(SB03)@10	Historic Pit Assessment	11/21/2024	39.92976705	-108.53453530	< 1	N	N	Y	None
20241121-M29 199-(SB03)@15	Historic Pit Assessment	11/21/2024	39.92976705	-108.53453530	< 1	N	N	N	None
20241121-M29 199-(SB03)@20	Historic Pit Assessment	11/21/2024	39.92976705	-108.53453530	< 1	N	N	Y	None
20241122-M29 199-(SB03)@25	Historic Pit Assessment	11/22/2024	39.92976705	-108.53453530	< 1	N	N	N	None
20241122-M29 199-(SB03)@30	Historic Pit Assessment	11/22/2024	39.92976705	-108.53453530	7.6	N	N	Y	None
20241122-M29 199-(SB03)@35	Historic Pit Assessment	11/22/2024	39.92976705	-108.53453530	< 1	N	N	N	None
20241122-M29 199-(SB03)@40	Historic Pit Assessment	11/22/2024	39.92976705	-108.53453530	< 1	N	N	Y	None
20241122-M29 199-(SB04)@5	Historic Pit Assessment	11/22/2024	39.92997442	-108.53461250	107.4	N	N	N	None
20241122-M29 199-(SB04)@10	Historic Pit Assessment	11/22/2024	39.92997442	-108.53461250	5.5	N	N	Y	None
20241122-M29 199-(SB04)@15	Historic Pit Assessment	11/22/2024	39.92997442	-108.53461250	1.2	N	N	N	None
20241122-M29 199-(SB04)@20	Historic Pit Assessment	11/22/2024	39.92997442	-108.53461250	< 1	N	N	Y	None
20241122-M29 199-(SB04)@25	Historic Pit Assessment	11/22/2024	39.92997442	-108.53461250	< 1	N	N	N	None
20241122-M29 199-(SB04)@30	Historic Pit Assessment	11/22/2024	39.92997442	-108.53461250	< 1	N	N	Y	None
20241122-M29 199-(SB04)@35	Historic Pit Assessment	11/22/2024	39.92997442	-108.53461250	< 1	N	N	N	None
20241122-M29 199-(SB04)@40	Historic Pit Assessment	11/22/2024	39.92997442	-108.53461250	1.3	N	N	Y	None
20241122-M29 199-(SB05)@5	Historic Pit Assessment	11/22/2024	39.92997618	-108.53437869	< 1	N	N	N	None



TABLE 1- SAMPLE SUMMARY
QB ENERGY OPERATING, LLC
CORRAL CREEK-61S99W 29SWSW PAD (CORRAL CREEK 4508 WELLHEAD)
REMEDATION PROJECT NUMBER: 36180
SWSW SEC. 29 T1S R99W
RIO BLANCO COUNTY, COLORADO

Sample ID	Sample Type	Sample Date	Latitude	Longitude	PID Reading (PPM)	Hydrocarbon Odor Detected (Y/N)	Soil Staining Observed (Y/N)	Submitted for Laboratory Analysis (Y/N)	Comments
20241125-M29 199-(SB05)@10	Historic Pit Assessment	11/25/2024	39.92997618	-108.53437869	< 1	N	N	Y	None
20241125-M29 199-(SB05)@15	Historic Pit Assessment	11/25/2024	39.92997618	-108.53437869	< 1	N	N	N	None
20241125-M29 199-(SB05)@20	Historic Pit Assessment	11/25/2024	39.92997618	-108.53437869	1.4	N	N	Y	None
20241125-M29 199-(SB05)@25	Historic Pit Assessment	11/25/2024	39.92997618	-108.53437869	1.6	N	N	N	None
20241125-M29 199-(SB05)@30	Historic Pit Assessment	11/25/2024	39.92997618	-108.53437869	1.1	N	N	Y	None
20241125-M29 199-(SB05)@35	Historic Pit Assessment	11/25/2024	39.92997618	-108.53437869	1.5	N	N	N	None
20241125-M29 199-(SB05)@40	Historic Pit Assessment	11/25/2024	39.92997618	-108.53437869	1.5	N	N	Y	None
20241125-M29 199-(SB06)@5	Historic Pit Assessment	11/25/2024	39.93011943	-108.53431925	< 1	N	N	N	None
20241125-M29 199-(SB06)@10	Historic Pit Assessment	11/25/2024	39.93011943	-108.53431925	< 1	N	N	Y	None
20241125-M29 199-(SB06)@15	Historic Pit Assessment	11/25/2024	39.93011943	-108.53431925	< 1	N	N	N	None
20241125-M29 199-(SB06)@20	Historic Pit Assessment	11/25/2024	39.93011943	-108.53431925	< 1	N	N	Y	None
20241125-M29 199-(SB06)@30	Historic Pit Assessment	11/25/2024	39.93011943	-108.53431925	1.7	N	N	Y	None
20241125-M29 199-(SB06)@35	Historic Pit Assessment	11/25/2024	39.93011943	-108.53431925	< 1	N	N	N	None
20241125-M29 199-(SB06)@40	Historic Pit Assessment	11/25/2024	39.93011943	-108.53431925	< 1	N	N	Y	None
20241125-M29 199-(SB07)@5	Historic Pit Assessment	11/25/2024	39.93030549	-108.53437526	2.4	N	N	N	None
20241125-M29 199-(SB07)@10	Historic Pit Assessment	11/25/2024	39.93030549	-108.53437526	< 1	N	N	Y	None
20241125-M29 199-(SB07)@15	Historic Pit Assessment	11/25/2024	39.93030549	-108.53437526	1.3	N	N	N	None



TABLE 1- SAMPLE SUMMARY
QB ENERGY OPERATING, LLC
CORRAL CREEK-61S99W 29SWSW PAD (CORRAL CREEK 4508 WELLHEAD)
REMEDATION PROJECT NUMBER: 36180
SWSW SEC. 29 T1S R99W
RIO BLANCO COUNTY, COLORADO

Sample ID	Sample Type	Sample Date	Latitude	Longitude	PID Reading (PPM)	Hydrocarbon Odor Detected (Y/N)	Soil Staining Observed (Y/N)	Submitted for Laboratory Analysis (Y/N)	Comments
20241125-M29 199-(SB07)@20	Historic Pit Assessment	11/25/2024	39.93030549	-108.53437526	1.2	N	N	Y	None
20241125-M29 199-(SB07)@25	Historic Pit Assessment	11/25/2024	39.93030549	-108.53437526	< 1	N	N	N	None
20241125-M29 199-(SB07)@30	Historic Pit Assessment	11/25/2024	39.93030549	-108.53437526	3.7	N	N	Y	None
20241125-M29 199-(SB07)@35	Historic Pit Assessment	11/25/2024	39.93030549	-108.53437526	< 1	N	N	N	None
20241125-M29 199-(SB07)@40	Historic Pit Assessment	11/25/2024	39.93030549	-108.53437526	< 1	N	N	Y	None
20241125-M29 199-(SB08)@5	Historic Pit Assessment	11/25/2024	39.93017991	-108.53458694	< 1	N	N	N	None
20241125-M29 199-(SB08)@10	Historic Pit Assessment	11/25/2024	39.93017991	-108.53458694	1.1	N	N	Y	None
20241125-M29 199-(SB08)@15	Historic Pit Assessment	11/25/2024	39.93017991	-108.53458694	3.4	N	N	N	None
20241125-M29 199-(SB08)@20	Historic Pit Assessment	11/25/2024	39.93017991	-108.53458694	2.3	N	N	Y	None
20241125-M29 199-(SB08)@25	Historic Pit Assessment	11/25/2024	39.93017991	-108.53458694	< 1	N	N	N	None
20241125-M29 199-(SB08)@30	Historic Pit Assessment	11/25/2024	39.93017991	-108.53458694	2	N	N	Y	None
20241125-M29 199-(SB08)@35	Historic Pit Assessment	11/26/2024	39.93017991	-108.53458694	< 1	N	N	N	None
20241125-M29 199-(SB08)@40	Historic Pit Assessment	11/25/2024	39.93017991	-108.53458694	< 1	N	N	Y	None
20250122-M29 199-(SB09)@5	Historic Pit Assessment	1/22/2025	39.92988224	-108.53419631	< 1	N	N	N	None
20250122-M29 199-(SB09)@10	Historic Pit Assessment	1/22/2025	39.92988224	-108.53419631	< 1	N	N	Y	None
20250122-M29 199-(SB09)@15	Historic Pit Assessment	1/22/2025	39.92988224	-108.53419631	1.5	N	N	N	None
20250122-M29 199-(SB09)@20	Historic Pit Assessment	1/22/2025	39.92988224	-108.53419631	< 1	N	N	Y	None



TABLE 1- SAMPLE SUMMARY
QB ENERGY OPERATING, LLC
CORRAL CREEK-61S99W 29SWSW PAD (CORRAL CREEK 4508 WELLHEAD)
REMEDIATION PROJECT NUMBER: 36180
SWSW SEC. 29 T1S R99W
RIO BLANCO COUNTY, COLORADO

Sample ID	Sample Type	Sample Date	Latitude	Longitude	PID Reading (PPM)	Hydrocarbon Odor Detected (Y/N)	Soil Staining Observed (Y/N)	Submitted for Laboratory Analysis (Y/N)	Comments
20250122-M29 199-(SB09)@25	Historic Pit Assessment	1/22/2025	39.92988224	-108.53419631	1.3	N	N	N	None
20250122-M29 199-(SB09)@30	Historic Pit Assessment	1/22/2025	39.92988224	-108.53419631	1.5	N	N	Y	None
20250122-M29 199-(SB09)@35	Historic Pit Assessment	1/22/2025	39.92988224	-108.53419631	< 1	N	N	N	None
20250122-M29 199-(SB09)@40	Historic Pit Assessment	1/22/2025	39.92988224	-108.53419631	2	N	N	Y	None
20240925-M29 199-(FC-PL01)@5	Off-Location Pipeline Assessment	9/25/2024	39.93433067	-108.53338330	< 1	N	N	Y	None
20240925-M29 199-(FC-PL02)@4	Off-Location Pipeline Assessment	9/25/2024	39.93108189	-108.54419875	< 1	N	N	Y	None

Notes:
PID = Photo-ionization Detector
PPM = Parts per million

TABLE 2 - INORGANIC ANALYTES
QB ENERGY OPERATING, LLC
CORRAL CREEK-61S99W 29SWSW PAD (CORRAL CREEK 4508 WELLHEAD)
REMEDIATION PROJECT NUMBER: 36180
SWSW SEC. 29 T1S R99W
RIO BLANCO COUNTY, COLORADO

Analyte			EC	SAR	pH	HWS Boron	Arsenic	Barium	Cadmium	Chromium VI	Copper	Lead	Nickel	Selenium	Silver	Zinc
915-1 RESIDENTIAL SOIL			4	6	8.3	2	0.68	15000	71	0.3	3100	400	1500	390	390	23000
Units			mmhos/cm	No Unit	SU	mg/L	mg/kg	mg/kg	mg/kg	mg/kg	mg/kg	mg/kg	mg/kg	mg/kg	mg/kg	mg/kg
Sample Name	Sample Type	Sample Date														
20240906-CCBG-(M29 199-N)@3	Background	09/06/2024	0.234	0.315	7.39	0.567	5.5	348	0.15	< 1.00	9.3	15.1	15.7	0.30	< 0.46	47.8
20240906-CCBG-(M29 199-S)@3	Background	09/06/2024	0.258	0.481	7.80	0.587	4.0	267	0.11	< 1.00	11.3	13.3	13.0	0.33	< 0.50	42.5
20240918-CCBG-(M29 199-E)@3	Background	09/18/2024	0.209	0.346	7.84	0.168	5.17	220	0.185	0.388	10.8	15.4	16.5	0.609	< 0.500	47.9
20240918-CCBG-(M29 199-W)@3	Background	09/18/2024	0.323	0.218	7.75	0.701	3.65	199	0.212	< 1.00	11.3	11.8	14.1	1.53	< 0.500	39.5
20241120-CCBG-(M29 199-N02)@5	Background	11/20/2024	1.09	11.2	9.09	0.208	7.02	277	0.169	0.259	17.4	16.0	21.5	0.482	< 0.500	59.0
20241120-CCBG-(M29 199-N02)@10	Background	11/20/2024	0.418	6.20	8.91	0.0566	5.66	430	< 1.00	< 1.00	8.16	13.1	15.8	0.332	< 0.500	49.2
20241120-CCBG-(M29 199-N02)@15	Background	11/20/2024	0.302	3.30	8.58	0.0720	8.22	510	0.152	0.315	11.9	15.4	15.1	0.374	< 0.500	45.9
20241120-CCBG-(M29 199-N02)@20	Background	11/20/2024	0.273	2.85	8.69	0.0518	6.90	227	0.104	< 1.00	7.66	10.8	15.7	0.298	< 0.500	43.9
20241120-CCBG-(M29 199-N02)@25	Background	11/20/2024	0.261	2.30	8.54	0.0419	12.0	246	< 1.00	< 1.00	7.56	13.1	17.5	0.297	< 0.500	46.0
20241120-CCBG-(M29 199-N02)@30	Background	11/20/2024	0.291	2.37	8.68	0.0444	9.89	307	0.0928	0.868	9.07	11.0	19.3	0.372	< 0.500	49.7
20241120-CCBG-(M29 199-N03)@5	Background	11/20/2024	0.277	0.596	8.34	0.112	5.80	178	0.0966	< 1.00	10.9	12.3	15.0	0.311	< 0.500	47.8
20241120-CCBG-(M29 199-N03)@10	Background	11/20/2024	0.311	4.32	9.05	0.0820	4.23	278	0.133	< 1.00	9.39	11.6	14.6	0.333	< 0.500	44.4
20241121-CCBG-(M29 199-N03)@15	Background	11/21/2024	0.237	3.66	8.59	0.0623	5.86	284	0.0977	< 1.00	8.51	13.9	17.8	0.226	< 0.500	49.1
20241121-CCBG-(M29 199-N03)@20	Background	11/21/2024	0.318	3.58	8.44	0.0991	5.05	324	0.121	0.423	8.92	12.4	17.5	0.388	< 0.500	48.3
20241121-CCBG-(M29 199-N03)@25	Background	11/21/2024	0.233	2.70	8.63	0.0821	5.69	1720	0.156	< 1.00	9.66	13.7	17.4	0.357	< 0.500	50.0
20241121-CCBG-(M29 199-N03)@30	Background	11/21/2024	0.381	3.29	8.32	0.131	5.62	442	0.147	0.329	9.25	13.4	17.6	0.366	< 0.500	48.1
20241121-CCBG-(M29 199-N04)@5	Background	11/21/2024	0.784	5.37	9.22	0.165	4.19	225	0.165	< 1.00	11.1	17.7	18.3	1.65	< 0.500	51.5
20241121-CCBG-(M29 199-N04)@10	Background	11/21/2024	0.467	7.54	8.60	0.0894	6.25	237	0.195	0.279	14.2	22.3	17.2	0.376	< 0.500	51.8
20241121-CCBG-(M29 199-N04)@15	Background	11/21/2024	0.313	4.15	8.38	0.0757	5.98	221	0.185	0.426	13.8	15.8	16.5	1.28	< 0.500	51.5
20241121-CCBG-(M29 199-N04)@20	Background	11/21/2024	0.263	3.26	8.45	0.104	5.56	231	0.160	0.544	15.2	15.3	18.8	0.404	< 0.500	53.0
20241121-CCBG-(M29 199-N05)@5	Background	11/21/2024	4.37	18.4	8.12	0.908	2.20	236	0.117	0.501	13.4	16.1	12.4	1.18	< 0.500	46.9
20241121-CCBG-(M29 199-N05)@10	Background	11/21/2024	1.7	8.52	8.10	0.200	2.65	236	0.137	0.389	13.2	15.8	16.6	1.68	< 0.500	48.9
20241121-CCBG-(M29 199-N05)@15	Background	11/21/2024	1.37	6.64	8.10	0.156	3.34	206	0.172	0.378	10.9	11.4	14.9	0.802	< 0.500	43.4
20241121-CCBG-(M29 199-N05)@20	Background	11/21/2024	0.472	3.95	8.30	0.115	4.16	362	0.111	0.289	13.3	12.9	16.7	0.305	< 0.500	53.8
20250124-CCBG-(M29 199-N06)@5	Background	01/24/2025	0.695	6.95	9.52	0.311	4.79	189	0.0951	< 1.00	9.32	13.1	12.1	0.312	< 0.500	39.4
20250124-CCBG-(M29 199-N06)@10	Background	01/24/2025	0.518	8.19	9.18	0.264	2.98	208	0.124	< 1.00	8.81	10.8	11.6	0.426	< 0.500	36.7
20250124-CCBG-(M29 199-N06)@15	Background	01/24/2025	0.293	5.42	8.77	0.120	4.84	224	0.112	< 1.00	10.1	12.6	12.5	0.245	< 0.500	43.2
20250124-CCBG-(M29 199-N06)@20	Background	01/24/2025	0.299	4.11	8.52	0.103	6.07	228	0.138	< 1.00	13.0	16.5	16.2	0.861	< 0.500	50.2
20250124-CCBG-(M29 199-N06)@25	Background	01/24/2025	0.241	2.22	8.47	0.0868	4.74	173	0.134	< 1.00	12.4	12.9	15.4	0.351	< 0.500	50.0
20250124-CCBG-(M29 199-N06)@30	Background	01/24/2025	0.332	3.72	8.48	0.250	7.13	498	0.126	0.718	24.9	15.5	14.7	0.498	< 0.500	53.9
20250124-CCBG-(M29 199-N06)@35	Background	01/24/2025	0.3	2.23	8.35	0.132	5.19	220	0.139	0.406	15.2	11.7	15.2	0.613	< 0.500	45.0
20250124-CCBG-(M29 199-N06)@40	Background	01/24/2025	0.291	2.63	8.44	0.194	4.63	254	0.135	0.443	15.5	12.8	18.2	0.559	< 0.500	46.6
20250124-CCBG-(M29 199-N07)@5	Background	01/24/2025	0.723	9.87	9.38	0.208	4.75	176	0.141	< 1.00	13.0	12.9	13.9	0.470	< 0.500	46.8
20250124-CCBG-(M29 199-N07)@10	Background	01/24/2025	0.407	7.50	8.79	0.0736	11.5	198	0.171	0.260	11.8	15.3	16.7	0.356	< 0.500	59.0
20250124-CCBG-(M29 199-N07)@15	Background	01/24/2025	0.255	4.42	8.64	0.0589	3.54	222	0.202	0.304	15.5	13.2	22.8	1.85	< 0.500	43.4
20250124-CCBG-(M29 199-N07)@20	Background	01/24/2025	0.281	4.27	8.57	0.0808	4.45	208	0.133	0.321	12.4	12.3	16.4	0.424	< 0.500	49.2
20250124-CCBG-(M29 199-N07)@25	Background	01/24/2025	0.271	3.26	8.53	0.0977	1.84	106	< 1.00	0.423	5.41	5.04	6.87	< 2.50	< 0.500	18.9
20250124-CCBG-(M29 199-N07)@30	Background	01/24/2025	0.271	2.67	8.45	0.0943	7.45	255	0.117	0.354	13.2	15.2	19.7	0.351	< 0.500	58.3
20250124-CCBG-(M29 199-N07)@35	Background	01/24/2025	0.23	1.91	8.47	0.0767	3.52	239	< 1.00	< 1.00	7.85	7.86	13.7	0.279	< 0.500	35.9

Notes:

Bold with silver highlight: Exceeds RSSLs

"<" (as in, less than laboratory reporting detection limit)

TABLE 2 - INORGANIC ANALYTES
QB ENERGY OPERATING, LLC
CORRAL CREEK-61S99W 29SWSW PAD (CORRAL CREEK 4508 WELLHEAD)
REMEDIATION PROJECT NUMBER: 36180
SWSW SEC. 29 T1S R99W
RIO BLANCO COUNTY, COLORADO

Analyte			EC	SAR	pH	HWS Boron	Arsenic	Barium	Cadmium	Chromium VI	Copper	Lead	Nickel	Selenium	Silver	Zinc
915-1 RESIDENTIAL SOIL			4	6	8.3	2	0.68	15000	71	0.3	3100	400	1500	390	390	23000
Units			mmhos/cm	No Unit	SU	mg/L	mg/kg	mg/kg	mg/kg	mg/kg	mg/kg	mg/kg	mg/kg	mg/kg	mg/kg	mg/kg
Sample Name	Sample Type	Sample Date														
20250124-CCBG-(M29 199-N07)@40	Background	01/24/2025	0.295	4.04	8.53	0.110	5.41	248	0.117	0.600	11.9	13.0	16.3	0.369	< 0.500	45.4
20240819-M29 199-(FC-WH)@7	Wellhead Assessment	08/19/2024	0.725	6.86	9.37	0.0857	1.29	1120	0.327	1.12	11.5	70.6	10.2	< 2.00 0.415	< 1.00	116
20240919-M29 199-(WH-BASE)@9	Wellhead Assessment	09/19/2024	0.71	6.63	8.40	0.335	3.71	2400	0.418	1.98	12.7	75.2	12.2	0.405	< 0.500	135
20240919-M29 199-(WH-EW)@9	Wellhead Assessment	09/19/2024	0.468	4.82	8.86	0.253	2.12	529	0.0999	0.451	5.10	13.8	9.40	0.216	< 0.500	40.6
20240919-M29 199-(WH-NW)@9	Wellhead Assessment	09/19/2024	0.495	5.20	8.64	0.196	1.50	442	0.112	1.42	3.98	15.9	5.26	0.428	< 0.500	29.9
20240919-M29 199-(WH-SW)@9	Wellhead Assessment	09/19/2024	0.618	5.50	8.37	0.329	5.87	3280	0.421	1.47	15.3	85.2	16.9	0.508	0.0882	254
20240919-M29 199-(WH-WW)@9	Wellhead Assessment	09/19/2024	0.62	4.69	8.52	0.333	4.25	2080	0.235	1.39	11.0	54.6	13.5	0.373	< 0.500	98.5
20241017-M29 199-(WH-BASE)@12	Wellhead Assessment	10/17/2024	0.465	1.95	7.94	0.0593	3.19	234	0.118	0.277	6.91	12.5	14.2	0.304	< 0.500	40.3
20241017-M29 199-(WH-NW02)@12	Wellhead Assessment	10/17/2024	0.439	2.85	8.10	0.0686	4.87	491	0.145	0.305	9.86	13.2	18.6	0.209	< 0.500	49.6
20241017-M29 199-(WH-SW02)@12	Wellhead Assessment	10/17/2024	0.376	4.57	8.36	0.183	1.78	361	< 1.00	< 1.00	4.29	7.85	6.08	0.302	< 0.500	22.3
20241017-M29 199-(WH-WW02)@12	Wellhead Assessment	10/17/2024	0.345	4.00	8.33	0.168	7.56	1020	0.299	0.506	12.2	33.3	18.8	0.415	< 0.500	69.3
20240919-M29 199-(WH-STOCK)	Wellhead Assessment	09/19/2024	0.495	4.82	8.60	0.256	4.76	2980	0.300	1.28	13.4	48.2	17.4	0.771	< 0.500	100
20241017-M29 199-(WH-STOCK)	Wellhead Assessment	10/17/2024	0.607	6.04	8.21	0.212	4.74	2450	0.149	0.892	8.79	20.1	13.6	0.390	< 0.500	56.2
20240827-M29 199 (FC-FL-T)@3	Tank Battery Area Assessment	08/27/2024	0.249	2.28	8.22	0.123	3.9	682	0.097	< 1.00	11.1	8.1	25.6	0.17	<0.19	48.5
20240906-M29 199-(FC-T01)@1	Tank Battery Area Assessment	09/06/2024	0.513	9.69	9.32	0.389	3.9	191	0.085	< 1.00	13.9	8.9	28.6	0.23	< 0.47	42.9
20240906-M29 199-(FC-T02)@1	Tank Battery Area Assessment	09/06/2024	0.338	3.00	8.52	0.197	3.5	1930	0.10	0.308	12.7	9.1	33.5	0.26	< 0.48	43.9
20240919-M29 199-(FL-T-BASE)@5	Tank Battery Area Assessment	09/19/2024	0.51	4.29	9.28	0.154	4.27	173	< 1.00	< 1.00	6.40	9.97	12.3	0.485	< 0.500	34.6

Notes:
Bold with silver highlight: Exceeds RSSLs
"<" (as in, less than laboratory reporting detection limit)

TABLE 2 - INORGANIC ANALYTES
QB ENERGY OPERATING, LLC
CORRAL CREEK-61S99W 29SWSW PAD (CORRAL CREEK 4508 WELLHEAD)
REMEDIATION PROJECT NUMBER: 36180
SWSW SEC. 29 T1S R99W
RIO BLANCO COUNTY, COLORADO

Analyte			EC	SAR	pH	HWS Boron	Arsenic	Barium	Cadmium	Chromium VI	Copper	Lead	Nickel	Selenium	Silver	Zinc
915-1 RESIDENTIAL SOIL			4	6	8.3	2	0.68	15000	71	0.3	3100	400	1500	390	390	23000
Units			mmhos/cm	No Unit	SU	mg/L	mg/kg	mg/kg	mg/kg	mg/kg	mg/kg	mg/kg	mg/kg	mg/kg	mg/kg	mg/kg
Sample Name	Sample Type	Sample Date														
20240919-M29 199-(FL-T-EW)@5	Tank Battery Area Assessment	09/19/2024	0.36	4.05	9.31	0.364	3.21	205	0.0968	< 1.00	7.88	8.43	18.5	0.546	< 0.500	29.7
20240919-M29 199-(FL-T-NW)@5	Tank Battery Area Assessment	09/19/2024	0.376	4.14	9.23	0.204	4.14	597	0.111	< 1.00	7.03	11.0	15.3	0.500	< 0.500	36.8
20240919-M29 199-(FL-T-SW)@5	Tank Battery Area Assessment	09/19/2024	0.343	1.25	8.41	0.282	4.23	319	0.138	0.443	8.55	13.8	13.8	0.354	< 0.500	48.0
20240919-M29 199-(FL-T-WW)@5	Tank Battery Area Assessment	09/19/2024	0.46	3.71	9.16	0.179	3.51	390	< 1.00	0.294	7.57	9.44	15.5	0.443	< 0.500	31.9
20241015-M29 199-(FL-T-BASE02)@8	Tank Battery Area Assessment	10/15/2024	0.719	9.29	8.94	0.236	5.48	200	< 1.00	< 1.00	7.13	10.7	14.4	0.516	< 0.500	44.0
20241015-M29 199-(FL-T-EW02)@8	Tank Battery Area Assessment	10/15/2024	0.544	5.75	9.41	0.219	5.56	197	0.216	< 1.00	9.83	15.3	18.2	0.412	< 0.500	44.1
20241015-M29 199-(FL-T-NW02)@8	Tank Battery Area Assessment	10/15/2024	0.393	7.44	9.24	0.261	4.82	168	< 1.00	< 1.00	7.81	12.0	13.4	0.503	< 0.500	48.5
20241015-M29 199-(FL-T-SW02)@8	Tank Battery Area Assessment	10/15/2024	0.784	5.14	8.86	0.320	5.88	140	0.0975	< 1.00	6.96	8.95	14.1	0.409	< 0.500	35.7
20240919-M29 199-(FL-T-STOCK)	Tank Battery Area Assessment	09/19/2024	0.395	4.78	8.83	0.257	3.82	329	0.131	< 1.00	7.56	10.2	18.6	0.591	< 0.500	38.1
20241015-M29 199-(FL-T-STOCK02)	Tank Battery Area Assessment	10/15/2024	0.388	5.18	8.75	0.506	6.41	692	0.0962	0.323	10.8	16.6	18.7	0.597	< 0.500	50.8
20240826-M29 199-(FC-SEP)@1	Separator Assessment	08/26/2024	0.36	0.704	7.80	0.445	3.11	127	0.491	< 1.00	9.94	6.39	20.3	< 2.00 0.475	< 1.00	27.6
20240826-M29 199-(FC-FL-SEP)@4	Separator Assessment	08/26/2024	0.504	4.14	8.32	0.298	6.20	234	0.230	0.381	11.4	18.8	18.4	< 2.00 0.574	< 1.00	48.4
20240827-M29 199 (FC-DL-SEP)@3	Separator Assessment	08/27/2024	0.214	2.05	8.41	0.146	3.8	486	0.17	< 1.00	14.1	6.9	34.9	0.19	<0.19	42

Notes:
Bold with silver highlight: Exceeds RSSLs
"<" (as in, less than laboratory reporting detection limit)

TABLE 2 - INORGANIC ANALYTES
QB ENERGY OPERATING, LLC
CORRAL CREEK-61S99W 29SWSW PAD (CORRAL CREEK 4508 WELLHEAD)
REMEDIATION PROJECT NUMBER: 36180
SWSW SEC. 29 T1S R99W
RIO BLANCO COUNTY, COLORADO

Analyte			EC	SAR	pH	HWS Boron	Arsenic	Barium	Cadmium	Chromium VI	Copper	Lead	Nickel	Selenium	Silver	Zinc
915-1 RESIDENTIAL SOIL			4	6	8.3	2	0.68	15000	71	0.3	3100	400	1500	390	390	23000
Units			mmhos/cm	No Unit	SU	mg/L	mg/kg	mg/kg	mg/kg	mg/kg	mg/kg	mg/kg	mg/kg	mg/kg	mg/kg	mg/kg
Sample Name	Sample Type	Sample Date														
20240826-M29 199-(RISER01)@3	Separator Assessment	08/26/2024	0.294	1.52	8.16	0.499	3.94	245	0.248	0.392	10.4	16.3	16.9	< 2.00 0.562	< 1.00	43.5
20240919-M29 199-(SEP-BASE)@4	Separator Assessment	09/19/2024	0.33	4.29	8.75	0.325	4.55	178	0.0888	< 1.00	9.83	13.1	18.3	0.582	< 0.500	50.7
20240919-M29 199-(SEP-EW)@4	Separator Assessment	09/19/2024	0.405	6.86	8.60	0.288	4.19	189	0.104	< 1.00	11.3	13.8	21.0	0.670	< 0.500	59.5
20240919-M29 199-(SEP-NW)@4	Separator Assessment	09/19/2024	0.242	1.70	8.27	0.311	4.43	243	0.199	0.380	11.6	13.8	22.3	0.685	< 0.500	54.5
20240919-M29 199-(SEP-SW)@4	Separator Assessment	09/19/2024	0.281	2.42	8.37	0.201	4.28	164	0.370	0.275	12.8	10.7	27.1	0.762	< 0.500	49.9
20240919-M29 199-(SEP-WW)@4	Separator Assessment	09/19/2024	0.292	5.04	8.61	0.246	3.81	139	< 1.00	< 1.00	8.87	9.24	17.1	0.365	< 0.500	43.6
20241016-M29 199-(SEP-BASE02)@7	Separator Assessment	10/16/2024	0.504	6.53	8.52	0.0602	4.42	151	0.0935	< 1.00	7.00	12.5	14.5	0.228	< 0.500	42.9
20241016-M29 199-(SEP-EW02)@7	Separator Assessment	10/16/2024	0.408	4.17	8.33	0.164	5.41	256	0.143	0.328	10.5	16.5	17.4	0.250	< 0.500	45.9
20241016-M29 199-(SEP-NW02)@7	Separator Assessment	10/16/2024	0.596	3.56	8.12	0.157	4.21	217	0.128	0.340	10.3	15.4	16.3	0.187	< 0.500	47.9
20241016-M29 199-(SEP-SW02)@7	Separator Assessment	10/16/2024	1.05	5.99	7.94	0.286	4.41	220	0.0979	0.286	8.92	12.6	18.4	< 2.50	< 0.500	42.3
20240919-M29 199-(SEP-STOCK)	Separator Assessment	09/19/2024	0.22	2.21	8.52	0.231	5.65	250	0.236	0.406	13.4	12.5	27.6	0.747	< 0.500	61.6
20241016-M29 199-(SEP-STOCK02)	Separator Assessment	10/16/2024	0.439	4.41	8.41	0.316	4.92	328	0.143	0.456	10.0	14.6	18.1	< 2.50	< 0.500	45.9
20240826-M29 199-(FC-MH) @ 1	Meter House Assessment	08/26/2024	0.668	9.31	9.05	0.640	4.88	209	0.184	1.00	10.6	20.8	16.8	< 2.00 0.511	< 1.00	51.7
20240826-M29 199-(FC-MH-FLE) @ 4	Meter House Assessment	08/26/2024	0.24	1.64	8.47	0.172	5.26	213	0.161	0.323	10.5	20.2	17.3	< 2.00 0.396	< 1.00	48.5
20240826-M29 199-(FC-MH-FLW) @ 4	Meter House Assessment	08/26/2024	0.278	1.47	8.19	0.362	3.35	198	0.175	0.413	8.77	14.7	12.5	0.790	< 1.00	39.1
20240919-M29 199-(MH-BASE)@4	Meter House Assessment	09/19/2024	0.192	2.21	8.59	0.0888	4.34	260	0.0897	< 1.00	8.73	11.9	16.9	0.408	< 0.500	50.0
20240919-M29 199-(MH-EW)@4	Meter House Assessment	09/19/2024	0.213	2.44	8.52	0.0997	4.16	327	0.108	0.372	11.9	13.8	17.5	0.492	< 0.500	49.8
20240919-M29 199-(MH-NW)@4	Meter House Assessment	09/19/2024	0.185	2.58	8.60	0.0929	5.75	523	0.118	0.597	11.3	16.8	18.3	0.440	< 0.500	52.7

Notes:
Bold with silver highlight: Exceeds RSSLs
"<" (as in, less than laboratory reporting detection limit)

TABLE 2 - INORGANIC ANALYTES
QB ENERGY OPERATING, LLC
CORRAL CREEK-61S99W 29SWSW PAD (CORRAL CREEK 4508 WELLHEAD)
REMEDIATION PROJECT NUMBER: 36180
SWSW SEC. 29 T1S R99W
RIO BLANCO COUNTY, COLORADO

Analyte			EC	SAR	pH	HWS Boron	Arsenic	Barium	Cadmium	Chromium VI	Copper	Lead	Nickel	Selenium	Silver	Zinc
915-1 RESIDENTIAL SOIL			4	6	8.3	2	0.68	15000	71	0.3	3100	400	1500	390	390	23000
Units			mmhos/cm	No Unit	SU	mg/L	mg/kg	mg/kg	mg/kg	mg/kg	mg/kg	mg/kg	mg/kg	mg/kg	mg/kg	mg/kg
Sample Name	Sample Type	Sample Date														
20240919-M29 199-(MH-SW)@4	Meter House Assessment	09/19/2024	0.171	1.37	8.49	0.0917	5.54	218	0.106	0.489	11.7	14.1	17.0	0.476	< 0.500	52.6
20240919-M29 199-(MH-WW)@4	Meter House Assessment	09/19/2024	0.199	1.24	8.43	0.112	4.87	282	0.0889	0.617	10.6	13.6	16.6	0.600	< 0.500	49.1
20240919-M29 199-(MH-STOCK)	Meter House Assessment	09/19/2024	0.201	1.35	8.40	0.108	4.97	374	0.117	0.590	10.7	15.7	17.9	0.594	< 0.500	53.4
20240826-M29 199-(FC-T03)@6	Buried Drip Tank Assessment	08/26/2024	0.408	2.29	8.20	0.409	2.40	116	0.323	0.579	6.39	9.21	9.12	< 2.00 0.374	< 1.00	27.8
20240919-M29 199-(T03-BASE)@10	Buried Drip Tank Assessment	09/19/2024	0.729	2.61	8.04	0.329	15.7	235	0.162	0.504	16.6	25.3	19.4	0.597	< 0.500	56.2
20240919-M29 199-(T03-EW)@10	Buried Drip Tank Assessment	09/19/2024	0.383	3.37	8.22	0.284	4.85	230	0.129	0.339	11.7	14.6	17.3	0.585	< 0.500	51.1
20240919-M29 199-(T03-NW)@10	Buried Drip Tank Assessment	09/19/2024	0.677	2.96	8.05	0.393	4.31	206	0.116	0.294	10.5	14.4	17.0	0.782	< 0.500	50.1
20240919-M29 199-(T03-SW)@10	Buried Drip Tank Assessment	09/19/2024	1.16	1.23	9.05	0.270	5.20	329	< 1.00	0.365	11.3	14.1	18.9	0.570	< 0.500	51.7
20240919-M29 199-(T03-WW)@10	Buried Drip Tank Assessment	09/19/2024	1.12	2.62	7.90	0.353	4.40	203	0.0960	< 1.00	9.41	13.2	17.0	0.489	< 0.500	46.3
20240919-M29 199-(T03-STOCK)	Buried Drip Tank Assessment	09/19/2024	0.595	3.02	7.98	0.323	4.78	338	0.136	0.511	11.0	14.8	16.7	0.656	< 0.500	53.5
20250610-M29-199-(T03-BASE02)@10	Buried Drip Tank Assessment	6/10/2025	0.284	1.51	8.52	0.337	4.26	219	< 0.100	0.336	< 10.0	13.5	16.5	0.421	< 0.500	< 50.0
20250610-M29-199-(T03-BASE03)@10	Buried Drip Tank Assessment	6/10/2025	0.432	1.53	8.47	0.357	6.75	256	0.127	0.466	10.9	19.5	17.1	0.386	< 0.500	51.1
20250610-M29-199-(T03-BASE04)@10	Buried Drip Tank Assessment	6/10/2025	0.415	2.18	8.37	0.213	4.64	230	< 0.100	0.293	11.5	13.5	17.9	0.311	< 0.500	50.3
20250610-M29-199-(T03-BASE05)@10	Buried Drip Tank Assessment	6/10/2025	0.367	2.64	8.60	0.398	7.91	244	0.150	0.565	11.5	17.8	21.5	0.338	< 0.500	55.4

Notes:
Bold with silver highlight: Exceeds RSSLs
"<" (as in, less than laboratory reporting detection limit)

TABLE 2 - INORGANIC ANALYTES
QB ENERGY OPERATING, LLC
CORRAL CREEK-61S99W 29SWSW PAD (CORRAL CREEK 4508 WELLHEAD)
REMEDIATION PROJECT NUMBER: 36180
SWSW SEC. 29 T1S R99W
RIO BLANCO COUNTY, COLORADO

Analyte			EC	SAR	pH	HWS Boron	Arsenic	Barium	Cadmium	Chromium VI	Copper	Lead	Nickel	Selenium	Silver	Zinc
915-1 RESIDENTIAL SOIL			4	6	8.3	2	0.68	15000	71	0.3	3100	400	1500	390	390	23000
Units			mmhos/cm	No Unit	SU	mg/L	mg/kg	mg/kg	mg/kg	mg/kg	mg/kg	mg/kg	mg/kg	mg/kg	mg/kg	mg/kg
Sample Name	Sample Type	Sample Date														
20240827-M29 199 (FC-PIT01)@7	Historic Pit Assessment	08/27/2024	1.97	3.35	7.57	0.289	3.5	185	0.11	< 1.00	8.1	13.5	12	0.3	<0.20	45.9
20240827-M29 199 (FC-PIT02)@7	Historic Pit Assessment	08/27/2024	3.1	56.8	7.66	7.42	3.1	357	0.11	< 1.00	7.9	16.8	12.3	0.45	<0.19	52.7
20240827-M29 199 (FC-PIT03)@7	Historic Pit Assessment	08/27/2024	13.1	19.5	7.63	2.29	3.2	224	0.11	< 1.00	8	10.9	16	0.24	<0.19	44.9
20241017-M29 199-(SB01)@1	Historic Pit Assessment	10/17/2024	17.2	14.0	7.55	1.83	4.72	344	0.147	< 1.00	10.9	13.5	16.2	0.521	< 0.500	48.1
20241017-M29 199-(SB01)@5	Historic Pit Assessment	10/17/2024	16.7	11.9	7.26	1.51	4.10	293	0.175	< 1.00	10.5	13.1	13.2	0.495	< 0.500	43.4
20241017-M29 199-(SB01)@10	Historic Pit Assessment	10/17/2024	6.38	29.3	7.93	1.31	4.09	166	0.0890	< 1.00	7.83	10.4	14.4	0.383	< 0.500	44.0
20241017-M29 199-(SB01)@20	Historic Pit Assessment	10/17/2024	3.52	1.59	7.60	0.117	4.69	254	0.129	0.398	13.7	16.7	17.6	0.338	< 0.500	53.6
20241017-M29 199-(SB01)@30	Historic Pit Assessment	10/17/2024	0.67	2.75	8.07	0.173	4.72	154	0.125	< 1.00	19.1	26.6	14.5	0.440	0.0874	64.5
20241017-M29 199-(SB01)@40	Historic Pit Assessment	10/17/2024	0.686	3.41	8.10	0.164	8.17	207	< 1.00	0.843	12.2	11.8	15.6	0.247	< 0.500	51.0
20241017-M29 199-(SB01)@50	Historic Pit Assessment	10/17/2024	0.502	3.83	8.22	0.132	6.99	160	0.148	< 1.00	14.5	18.2	13.6	1.38	< 0.500	43.2
20241018-M29 199-(SB02)@1	Historic Pit Assessment	10/18/2024	9.04	13.1	7.33	1.36	4.97	244	0.109	0.279	9.95	13.9	13.0	0.497	< 0.500	40.6
20241018-M29 199-(SB02)@5	Historic Pit Assessment	10/18/2024	15.1	20.0	7.51	2.17	3.44	330	0.130	< 1.00	65.3	12.9	13.2	0.504	< 0.500	45.3
20241018-M29 199-(SB02)@10	Historic Pit Assessment	10/18/2024	9.98	18.0	7.63	1.94	6.23	154	< 1.00	< 1.00	8.73	10.4	18.1	0.420	< 0.500	46.4
20241018-M29 199-(SB02)@20	Historic Pit Assessment	10/18/2024	7.92	15.4	7.70	1.03	5.65	177	0.118	< 1.00	11.8	13.9	16.4	1.37	< 0.500	48.5
20241018-M29 199-(SB02)@30	Historic Pit Assessment	10/18/2024	4.25	3.67	7.60	0.215	5.74	160	0.187	< 1.00	15.1	15.6	17.1	1.59	< 0.500	51.1
20241018-M29 199-(SB02)@40	Historic Pit Assessment	10/18/2024	3.46	5.34	7.66	0.390	4.75	190	0.165	< 1.00	16.9	16.5	12.9	1.14	< 0.500	39.7
20241018-M29 199-(SB02)@50	Historic Pit Assessment	10/18/2024	1.98	3.97	7.85	0.203	3.39	397	0.105	1.37	15.0	12.6	15.0	0.512	< 0.500	44.3
20241018-M29 199-(SB02)@50	Historic Pit Assessment	10/18/2024								0.474						
20241121-M29 199-(SB03)@10	Historic Pit Assessment	11/21/2024	0.415	4.22	7.52	0.0423	12.3	166	0.124	0.310	7.50	14.1	21.0	0.246	< 0.500	52.7

Notes:
Bold with silver highlight: Exceeds RSSLs
"<" (as in, less than laboratory reporting detection limit)

TABLE 2 - INORGANIC ANALYTES
QB ENERGY OPERATING, LLC
CORRAL CREEK-61S99W 29SWSW PAD (CORRAL CREEK 4508 WELLHEAD)
REMEDIATION PROJECT NUMBER: 36180
SWSW SEC. 29 T1S R99W
RIO BLANCO COUNTY, COLORADO

Analyte			EC	SAR	pH	HWS Boron	Arsenic	Barium	Cadmium	Chromium VI	Copper	Lead	Nickel	Selenium	Silver	Zinc
915-1 RESIDENTIAL SOIL			4	6	8.3	2	0.68	15000	71	0.3	3100	400	1500	390	390	23000
Units			mmhos/cm	No Unit	SU	mg/L	mg/kg	mg/kg	mg/kg	mg/kg	mg/kg	mg/kg	mg/kg	mg/kg	mg/kg	mg/kg
Sample Name	Sample Type	Sample Date														
20241121-M29 199-(SB03)@20	Historic Pit Assessment	11/21/2024	0.299	4.19	8.61	0.0443	6.80	161	< 1.00	0.311	7.60	14.2	22.5	0.278	< 0.500	48.7
20241122-M29 199-(SB03)@30	Historic Pit Assessment	11/22/2024	0.309	4.38	8.42	0.0679	6.79	258	0.299	< 1.00	13.9	14.1	30.1	0.865	< 0.500	49.3
20241122-M29 199-(SB03)@40	Historic Pit Assessment	11/22/2024	0.426	5.23	8.42	0.143	4.23	350	0.136	< 1.00	9.67	10.4	13.7	0.875	< 0.500	40.7
20241122-M29 199-(SB04)@10	Historic Pit Assessment	11/22/2024	0.363	3.33	8.32	0.0849	4.67	218	< 1.00	< 1.00	9.27	10.6	15.4	0.451	< 0.500	45.4
20241122-M29 199-(SB04)@20	Historic Pit Assessment	11/22/2024	0.398	2.90	8.21	0.0688	2.16	244	< 1.00	< 1.00	7.67	12.0	17.6	0.261	< 0.500	39.5
20241122-M29 199-(SB04)@30	Historic Pit Assessment	11/22/2024	0.245	2.90	8.22	0.0564	6.21	194	0.128	< 1.00	10.3	15.4	15.3	2.06	< 0.500	54.4
20241122-M29 199-(SB04)@40	Historic Pit Assessment	11/22/2024	0.403	3.73	8.25	0.119	4.07	157	0.228	0.453	13.7	12.3	17.2	0.580	< 0.500	49.1
20241125-M29 199-(SB05)@10	Historic Pit Assessment	11/25/2024	2.13	8.88	8.12	0.333	2.41	120	< 1.00	< 1.00	4.49	8.74	11.5	< 2.50	< 0.500	31.6
20241125-M29 199-(SB05)@20	Historic Pit Assessment	11/25/2024	6.68	20.5	7.96	1.07	1.49	130	0.0954	0.636	5.46	8.73	9.51	0.500	< 0.500	29.1
20241125-M29 199-(SB05)@30	Historic Pit Assessment	11/25/2024	6.92	21.4	7.94	1.22	2.14	154	< 1.00	1.07	5.90	9.26	10.1	0.214	< 0.500	31.2
20241125-M29 199-(SB05)@30	Historic Pit Assessment	11/25/2024								1.10						
20241125-M29 199-(SB05)@30	Historic Pit Assessment	11/25/2024								0.630						
20241125-M29 199-(SB05)@40	Historic Pit Assessment	11/25/2024	5.25	11.7	7.87	0.589	3.21	161	0.114	1.02	8.43	10.7	11.9	0.277	< 0.500	37.0
20241125-M29 199-(SB05)@40	Historic Pit Assessment	11/25/2024								0.869						
20241125-M29 199-(SB06)@10	Historic Pit Assessment	11/25/2024	1.12	2.01	7.99	0.128	2.12	143	0.0855	0.356	5.38	10.3	10.2	< 2.50	< 0.500	30.4
20241125-M29 199-(SB06)@20	Historic Pit Assessment	11/25/2024	0.517	2.21	8.18	0.0848	3.67	172	0.141	0.553	7.77	14.4	13.4	0.353	< 0.500	34.7
20241125-M29 199-(SB06)@30	Historic Pit Assessment	11/25/2024	0.68	2.55	8.14	0.0921	3.13	166	0.117	0.551	8.87	12.3	12.2	0.353	< 0.500	40.5
20241125-M29 199-(SB06)@40	Historic Pit Assessment	11/25/2024	0.56	3.12	8.25	0.140	3.88	193	0.114	1.13	8.35	11.2	11.3	0.274	< 0.500	35.8
20241125-M29 199-(SB06)@40	Historic Pit Assessment	11/25/2024								0.622						

Notes:
Bold with silver highlight: Exceeds RSSLs
"<" (as in, less than laboratory reporting detection limit)

TABLE 2 - INORGANIC ANALYTES
QB ENERGY OPERATING, LLC
CORRAL CREEK-61S99W 29SWSW PAD (CORRAL CREEK 4508 WELLHEAD)
REMEDIATION PROJECT NUMBER: 36180
SWSW SEC. 29 T1S R99W
RIO BLANCO COUNTY, COLORADO

Analyte			EC	SAR	pH	HWS Boron	Arsenic	Barium	Cadmium	Chromium VI	Copper	Lead	Nickel	Selenium	Silver	Zinc
915-1 RESIDENTIAL SOIL			4	6	8.3	2	0.68	15000	71	0.3	3100	400	1500	390	390	23000
Units			mmhos/cm	No Unit	SU	mg/L	mg/kg	mg/kg	mg/kg	mg/kg	mg/kg	mg/kg	mg/kg	mg/kg	mg/kg	mg/kg
Sample Name	Sample Type	Sample Date														
20241125-M29 199-(SB07)@10	Historic Pit Assessment	11/25/2024	0.421	1.98	8.08	0.0685	1.90	153	0.113	0.259	5.40	10.0	9.64	< 2.50	< 0.500	29.9
20241125-M29 199-(SB07)@20	Historic Pit Assessment	11/25/2024	0.479	1.77	8.19	0.121	2.23	375	0.100	0.782	6.78	9.66	9.80	< 2.50	< 0.500	32.1
20241125-M29 199-(SB07)@30	Historic Pit Assessment	11/25/2024	0.429	1.89	8.21	0.108	2.76	247	0.125	< 1.00	9.67	12.0	12.9	0.205	< 0.500	42.9
20241125-M29 199-(SB07)@40	Historic Pit Assessment	11/25/2024	0.382	2.09	8.24	0.120	3.11	248	0.129	0.452	9.88	13.3	12.1	0.241	< 0.500	41.9
20241125-M29 199-(SB08)@10	Historic Pit Assessment	11/25/2024	0.272	2.10	8.35	0.0718	0.871	109	0.0885	< 1.00	4.75	7.92	7.81	0.339	< 0.500	18.4
20241125-M29 199-(SB08)@20	Historic Pit Assessment	11/25/2024	0.276	2.46	8.34	0.0674	2.37	169	0.118	< 1.00	7.45	9.44	9.22	0.184	< 0.500	32.1
20241125-M29 199-(SB08)@30	Historic Pit Assessment	11/25/2024	0.407	2.80	8.28	0.163	4.05	158	0.104	0.337	9.02	10.2	12.2	0.221	< 0.500	35.6
20241125-M29 199-(SB08)@40	Historic Pit Assessment	11/25/2024	0.384	2.91	8.36	0.175	2.66	181	0.0942	0.533	6.92	8.88	8.61	< 2.50	< 0.500	25.5
20250122-M29 199-(SB09)@10	Historic Pit Assessment	01/22/2025	0.341	2.29	8.49	0.0847	5.26	208	0.139	0.695	12.1	14.0	17.2	0.361	< 0.500	48.3
20250122-M29 199-(SB09)@20	Historic Pit Assessment	01/22/2025	0.284	2.29	8.75	0.0607	5.54	185	0.106	0.478	8.41	11.9	17.4	0.291	< 0.500	47.9
20250122-M29 199-(SB09)@30	Historic Pit Assessment	01/22/2025	0.609	2.47	8.31	0.0786	3.99	344	0.116	0.730	9.01	11.3	15.3	0.809	< 0.500	45.0
20250122-M29 199-(SB09)@40	Historic Pit Assessment	01/22/2025	0.586	2.79	8.28	0.0993	3.93	224	0.106	0.912	9.70	12.0	15.9	0.969	< 0.500	45.3
20240925-M29 199-(FC-PL01)@5	Off-Location Pipeline Assessment	09/25/2024	0.28	0.323	7.70	0.390	4.60	249	0.130	< 1.00	10.5	14.1	13.7	0.753	< 0.500	46.5
20240925-M29 199-(FC-PL02)@4	Off-Location Pipeline Assessment	09/25/2024	0.355	1.54	8.07	1.14	9.66	519	0.260	< 1.00	13.6	9.61	14.0	0.513	< 0.500	43.3

Notes:
Bold with silver highlight: Exceeds RSSLs
"<" (as in, less than laboratory reporting detection limit)

TABLE 3 - ORGANIC ANALYTES
QB ENERGY OPERATING, LLC
CORRAL CREEK-61S99W 29SWSW PAD (CORRAL CREEK 4508 WELLHEAD)
REMEDIATION PROJECT NUMBER: 36180
SWSW SEC. 29 T1S R99W
RIO BLANCO COUNTY, COLORADO

Analyte			GRO	DRO	ORO	Benzene	Toluene	Ethylbenzene	Total Xylenes	1,2,4-TMB	1,3,5-TMB	Acenaphthene	Anthracene	Benz(a)anthracene	Benzo(b)fluoranthene	Benzo(k)fluoranthene	Benzo(a)pyrene	Chrysene	Dibenz(a,h)anthracene	Fluoranthene	Fluorene	Indeno(1,2,3-cd)Pyrene	1-Methylnaphthalene	2-Methylnaphthalene	Naphthalene	Pyrene	
915-1 RESIDENTIAL SOIL			500			1.2	490	5.8	58	30	27	360	1800	1.1	1.1	11	0.11	110	0.11	240	240	1.1	18	24	2	180	
Units			mg/kg			mg/kg	mg/kg	mg/kg	mg/kg	mg/kg	mg/kg	mg/kg	mg/kg	mg/kg	mg/kg	mg/kg	mg/kg	mg/kg	mg/kg	mg/kg	mg/kg	mg/kg	mg/kg	mg/kg	mg/kg	mg/kg	
Sample Name	Sample Type	Sample Date																									
20240819-M29 199-(FC-WH)@7	Wellhead Assessment	08/19/2024	0.183	104	173	< 0.00100	< 0.00500	< 0.00250	< 0.00650	< 0.00500	< 0.00500	< 0.00600	< 0.00600	< 0.00600	< 0.00600	< 0.00600	< 0.00600	< 0.00600	< 0.00600	< 0.00600	< 0.00600	0.00262	0.00832	0.0116	0.00661	0.00690	
20240919-M29 199-(WH-BASE)@9	Wellhead Assessment	09/19/2024	1.67	220	226	< 0.00100	< 0.00500	< 0.00250	< 0.00650	< 0.00500	< 0.00500	< 0.00600	< 0.00600	< 0.00600	0.00210	< 0.00600	< 0.00600	< 0.00600	< 0.00600	< 0.00600	< 0.00600	< 0.00600	0.00203	0.0112	0.0176	0.00693	0.0190
20240919-M29 199-(WH-EW)@9	Wellhead Assessment	09/19/2024	0.0286	22.4	49.2	< 0.00100	< 0.00500	< 0.00250	< 0.00650	< 0.00500	< 0.00500	< 0.00600	< 0.00600	< 0.00600	< 0.00600	< 0.00600	< 0.00600	< 0.00600	< 0.00600	< 0.00600	< 0.00600	< 0.00600	< 0.0200	< 0.0200	< 0.0200	< 0.00600	
20240919-M29 199-(WH-NW)@9	Wellhead Assessment	09/19/2024	0.0328	67.3	105	< 0.00100	< 0.00500	< 0.00250	< 0.00650	< 0.00500	< 0.00500	< 0.00600	< 0.00600	< 0.00600	< 0.00600	< 0.00600	< 0.00600	< 0.00600	< 0.00600	< 0.00600	< 0.00600	< 0.00600	< 0.0200	0.00511	< 0.0200	< 0.00600	
20240919-M29 199-(WH-SW)@9	Wellhead Assessment	09/19/2024	0.0427	106	156	< 0.00100	< 0.00500	< 0.00250	< 0.00650	< 0.00500	< 0.00500	< 0.00600	< 0.00600	< 0.00600	< 0.00600	< 0.00600	< 0.00600	< 0.00600	< 0.00600	< 0.00600	< 0.00600	< 0.00600	0.00474	0.00690	< 0.0200	0.00330	
20240919-M29 199-(WH-VW)@9	Wellhead Assessment	09/19/2024	0.0463	83.7	168	< 0.00100	< 0.00500	< 0.00250	< 0.00650	< 0.00500	< 0.00500	< 0.00600	< 0.00600	< 0.00600	< 0.00600	< 0.00600	< 0.00600	< 0.00600	< 0.00600	< 0.00600	< 0.00600	< 0.00600	< 0.0200	0.00597	< 0.0200	< 0.00600	
20241017-M29 199-(WH-BASE)@12	Wellhead Assessment	10/17/2024	< 0.100	10.8	9.66	< 0.00100	< 0.00500	< 0.00250	< 0.00650	< 0.00500	< 0.00500	< 0.00600	< 0.00600	< 0.00600	< 0.00600	< 0.00600	< 0.00600	< 0.00600	< 0.00600	< 0.00600	< 0.00600	0.00246	< 0.00600	0.0113	0.0162	< 0.0200	< 0.00600
20241017-M29 199-(WH-NW02)@12	Wellhead Assessment	10/17/2024	0.0261	14.6	23.0	< 0.00100	< 0.00500	< 0.00250	< 0.00650	< 0.00500	< 0.00500	< 0.00600	< 0.00600	< 0.00600	< 0.00600	< 0.00600	< 0.00600	< 0.00600	< 0.00600	< 0.00600	< 0.00600	< 0.00600	< 0.0200	< 0.0200	< 0.0200	< 0.00600	
20241017-M29 199-(WH-SW02)@12	Wellhead Assessment	10/17/2024	0.0334	4.87	11.5	< 0.00100	0.00155	< 0.00250	< 0.00650	< 0.00500	< 0.00500	< 0.00600	< 0.00600	< 0.00600	< 0.00600	< 0.00600	< 0.00600	< 0.00600	< 0.00600	< 0.00600	< 0.00600	< 0.00600	< 0.0200	< 0.0200	< 0.0200	< 0.00600	
20241017-M29 199-(WH-VW02)@12	Wellhead Assessment	10/17/2024	0.0361	37.3	88.0	< 0.00100	0.00170	< 0.00250	< 0.00650	< 0.00500	< 0.00500	0.00551	0.00341	0.0359	0.0341	0.0153	0.0260	0.0419	0.00309	0.0711	0.00854	0.0140	0.0143	0.0179	< 0.0200	0.0732	
20240919-M29 199-(WH-STOCK)	Wellhead Assessment	09/19/2024	0.0449	78.6	169	< 0.00100	< 0.00500	< 0.00250	< 0.00650	< 0.00500	< 0.00500	< 0.00600	< 0.00600	< 0.00600	< 0.00600	< 0.00600	< 0.00600	< 0.00600	< 0.00600	< 0.00600	< 0.00600	< 0.00600	< 0.0200	0.00537	< 0.0200	< 0.00600	
20241017-M29 199-(WH-STOCK)	Wellhead Assessment	10/17/2024	0.0728	92.8	159	< 0.00100	< 0.00500	< 0.00250	< 0.00650	0.00308	< 0.00500	0.0224	0.00243	< 0.00600	< 0.00600	< 0.00600	< 0.00600	< 0.00600	< 0.00600	< 0.00600	0.00318	0.0300	< 0.00600	0.187	0.253	0.0295	0.00689
20240827-M29 199 (FC-FL-T)@3	Tank Battery Area Assessment	08/27/2024	606	2420	928	< 0.0800	1.30	0.896	21.5	9.40	4.01	0.275	< 0.00600	< 0.00600	0.0162	< 0.00600	< 0.00600	0.0589	< 0.00600	0.0850	0.652	< 0.00600	7.04	7.14	0.591	0.0338	
20240906-M29 199-(FC-T01)@1	Tank Battery Area Assessment	09/06/2024	0.0877	35.1	41.2	< 0.00101	< 0.00505	< 0.00253	0.00119	< 0.00505	< 0.00505	0.0764	0.0740	0.239	0.397	0.149	0.248	0.337	0.0485	0.774	0.0919	0.222	0.0123	0.0176	0.0179	0.502	
20240906-M29 199-(FC-T02)@1	Tank Battery Area Assessment	09/06/2024	0.0529	2.87	5.17	< 0.00100	< 0.00500	< 0.00250	< 0.00650	< 0.00500	< 0.00500	< 0.00600	< 0.00600	< 0.00600	< 0.00600	< 0.00600	< 0.00600	< 0.00600	< 0.00600	< 0.00600	0.00228	< 0.00600	< 0.00600	< 0.0200	< 0.0200	< 0.0200	< 0.00600
20240919-M29 199-(FL-T-BASE)@5	Tank Battery Area Assessment	09/19/2024	0.0315	3.64	5.49	< 0.00100	< 0.00500	< 0.00250	< 0.00650	< 0.00500	< 0.00500	< 0.00600	< 0.00600	< 0.00600	< 0.00600	< 0.00600	< 0.00600	< 0.00600	< 0.00600	< 0.00600	< 0.00600	< 0.00600	< 0.0200	< 0.0200	< 0.0200	< 0.00600	
20240919-M29 199-(FL-T-EW)@5	Tank Battery Area Assessment	09/19/2024	0.0557	29.5	45.8	< 0.00100	< 0.00500	< 0.00250	< 0.00650	< 0.00500	< 0.00500	0.322	0.368	1.16	1.64	0.532	1.11	1.48	0.202	2.93	0.407	0.863	0.0454	0.0638	0.0726	2.12	
20240919-M29 199-(FL-T-NW)@5	Tank Battery Area Assessment	09/19/2024	0.0367	8.18	11.2	< 0.00100	< 0.00500	< 0.00250	< 0.00650	< 0.00500	< 0.00500	< 0.00600	< 0.00600	< 0.00600	< 0.00600	< 0.00600	< 0.00600	< 0.00600	< 0.00600	< 0.00600	< 0.00600	< 0.00600	< 0.00600	0.00507	0.0117	< 0.0200	< 0.00600
20240919-M29 199-(FL-T-SW)@5	Tank Battery Area Assessment	09/19/2024	0.0804	158	236	< 0.00100	< 0.00500	< 0.00250	< 0.00650	< 0.00500	< 0.00500	0.00275	< 0.00600	< 0.00600	0.00313	< 0.00600	< 0.00600	< 0.00600	< 0.00600	< 0.00600	0.00348	< 0.00600	< 0.00600	0.0348	0.0789	0.0207	0.00336
20240919-M29 199-(FL-T-VW)@5	Tank Battery Area Assessment	09/19/2024	0.0352	2.47	5.68	< 0.00100	< 0.00500	< 0.00250	< 0.00650	< 0.00500	< 0.00500	< 0.00600	< 0.00600	< 0.00600	< 0.00600	< 0.00600	< 0.00600	< 0.00600	< 0.00600	< 0.00600	< 0.00600	< 0.00600	< 0.0200	< 0.0200	< 0.0200	< 0.00600	
20241015-M29 199-(FL-T-BASE02)@8	Tank Battery Area Assessment	10/15/2024	0.0257	3.50	4.77	< 0.00101	0.00237	< 0.00253	< 0.00656	< 0.00505	< 0.00505	< 0.00600	< 0.00600	< 0.00600	< 0.00600	< 0.00600	< 0.00600	< 0.00600	< 0.00600	< 0.00600	< 0.00600	< 0.00600	< 0.0200	< 0.0200	< 0.0200	< 0.00600	
20241015-M29 199-(FL-T-EW02)@8	Tank Battery Area Assessment	10/15/2024	0.0326	4.50	3.08	< 0.00100	0.00232	< 0.00250	< 0.00650	< 0.00500	< 0.00500	< 0.00600	< 0.00600	< 0.00600	< 0.00600	< 0.00600	< 0.00600	< 0.00600	< 0.00600	< 0.00600	< 0.00600	< 0.00600	< 0.0200	< 0.0200	< 0.0200	< 0.00600	
20241015-M29 199-(FL-T-NW02)@8	Tank Battery Area Assessment	10/15/2024	0.0255	24.1	3.30	< 0.00100	0.00188	< 0.00250	< 0.00650	< 0.00500	< 0.00500	< 0.00600	< 0.00600	< 0.00600	< 0.00600	< 0.00600	< 0.00600	< 0.00600	< 0.00600	< 0.00600	< 0.00600	< 0.00600	< 0.0200	< 0.0200	< 0.0200	< 0.00600	
20241015-M29 199-(FL-T-SW02)@8	Tank Battery Area Assessment	10/15/2024	0.0250	2.61	4.59	< 0.00101	0.00230	< 0.00253	< 0.00656	< 0.00505	< 0.00505	< 0.00600	< 0.00600	< 0.00600	< 0.00600	< 0.00600	< 0.00600	< 0.00600	< 0.00600	< 0.00600	< 0.00600	< 0.00600	< 0.0200	< 0.0200	< 0.0200	< 0.00600	
20240919-M29 199-(FL-T-STOCK)	Tank Battery Area Assessment	09/19/2024	0.0435	32.6	56.7	< 0.00100	< 0.00500	< 0.00250	< 0.00650	< 0.00500	< 0.00500	< 0.00600	< 0.00600	0.00498	0.00797	0.00272	0.00513	0.00582	< 0.00600	0.0139	0.00254	0.00434	0.0102	0.0212	0.00858	0.0103	

Notes:
Bold with silver highlight: Exceeds RSSLs
"<" (as in, less than laboratory reporting detection limit)

TABLE 3 - ORGANIC ANALYTES
QB ENERGY OPERATING, LLC
CORRAL CREEK-61S99W 29SWSW PAD (CORRAL CREEK 4508 WELLHEAD)
REMEDIATION PROJECT NUMBER: 36180
SWSW SEC. 29 T1S R99W
RIO BLANCO COUNTY, COLORADO

Analyte			GRO	DRO	ORO	Benzene	Toluene	Ethylbenzene	Total Xylenes	1,2,4-TMB	1,3,5-TMB	Acenaphthene	Anthracene	Benz(a)anthracene	Benzo(b)fluoranthene	Benzo(k)fluoranthene	Benzo(a)pyrene	Chrysene	Dibenz(a,h)anthracen	Fluoranthene	Fluorene	Indeno(1,2,3-cd)Pyre	1-Methylnaphthalene	2-Methylnaphthalene	Naphthalene	Pyrene
915-1 RESIDENTIAL SOIL			500			1.2	490	5.8	58	30	27	360	1800	1.1	1.1	11	0.11	110	0.11	240	240	1.1	18	24	2	180
Units			mg/kg			mg/kg	mg/kg	mg/kg	mg/kg	mg/kg	mg/kg	mg/kg	mg/kg	mg/kg	mg/kg	mg/kg	mg/kg	mg/kg	mg/kg	mg/kg	mg/kg	mg/kg	mg/kg	mg/kg	mg/kg	mg/kg
20241015-M29 199-(FL-T-STOCK02)	Tank Battery Area Assessment	10/15/2024	0.0388	46.8	73.6	0.000750	0.00573	< 0.00250	0.00767	0.00288	< 0.00500	< 0.00600	< 0.00600	< 0.00600	< 0.00600	< 0.00600	< 0.00600	< 0.00600	< 0.00600	< 0.00600	< 0.00600	< 0.0200	< 0.0200	< 0.0200	< 0.00600	
20240826-M29 199-(FC-SEP)@1	Separator Assessment	08/26/2024	2.64	586	590	< 0.00100	0.00278	< 0.00250	0.00520	< 0.00500	< 0.00500	< 0.00600	< 0.00600	< 0.00600	0.00204	< 0.00600	< 0.00600	0.00375	< 0.00600	0.00334	< 0.00600	< 0.00600	< 0.0200	< 0.0200	< 0.0200	0.00350
20240826-M29 199-(FC-FL-SEP)@4	Separator Assessment	08/26/2024	0.0247	3.60	9.50	< 0.00100	< 0.00500	< 0.00250	< 0.00650	< 0.00500	< 0.00500	< 0.00600	< 0.00600	< 0.00600	< 0.00600	< 0.00600	< 0.00600	< 0.00600	< 0.00600	< 0.00600	< 0.00600	< 0.0200	< 0.0200	< 0.0200	< 0.00600	
20240827-M29 199 (FC-DL-SEP)@3	Separator Assessment	08/27/2024	0.207	42.2	74.1	< 0.00100	< 0.00500	< 0.00250	< 0.00650	< 0.00500	< 0.00500	< 0.00600	< 0.00600	< 0.00600	< 0.00600	< 0.00600	< 0.00600	< 0.00600	< 0.00600	< 0.00600	< 0.00600	< 0.0200	< 0.0200	< 0.0200	< 0.00600	
20240826-M29 199-(RISER01)@3	Separator Assessment	08/26/2024	0.0274	17.3	23.1	< 0.00100	< 0.00500	< 0.00250	< 0.00650	< 0.00500	< 0.00500	< 0.00600	< 0.00600	< 0.00600	< 0.00600	< 0.00600	< 0.00600	< 0.00600	< 0.00600	< 0.00600	0.00508	< 0.00600	< 0.0200	< 0.0200	< 0.0200	< 0.00600
20240919-M29 199-(SEP-BASE)@4	Separator Assessment	09/19/2024	1.37	< 4.00	< 4.00	< 0.00100	< 0.00500	< 0.00250	< 0.00650	< 0.00500	< 0.00500	< 0.00600	< 0.00600	< 0.00600	< 0.00600	< 0.00600	< 0.00600	< 0.00600	< 0.00600	< 0.00600	< 0.00600	< 0.0200	< 0.0200	< 0.0200	< 0.00600	
20240919-M29 199-(SEP-EW)@4	Separator Assessment	09/19/2024	0.0455	< 4.00	0.313	< 0.00100	< 0.00500	< 0.00250	< 0.00650	< 0.00500	< 0.00500	< 0.00600	< 0.00600	< 0.00600	< 0.00600	< 0.00600	< 0.00600	< 0.00600	< 0.00600	< 0.00600	< 0.00600	< 0.00600	< 0.0200	< 0.0200	< 0.0200	< 0.00600
20240919-M29 199-(SEP-NW)@4	Separator Assessment	09/19/2024	0.0521	2.76	5.19	< 0.00100	< 0.00500	< 0.00250	< 0.00650	< 0.00500	< 0.00500	< 0.00600	< 0.00600	< 0.00600	< 0.00600	< 0.00600	< 0.00600	< 0.00600	< 0.00600	< 0.00600	< 0.00600	< 0.00600	< 0.0200	< 0.0200	< 0.0200	< 0.00600
20240919-M29 199-(SEP-SW)@4	Separator Assessment	09/19/2024	0.0526	72.8	95.8	< 0.00100	< 0.00500	< 0.00250	< 0.00650	< 0.00500	< 0.00500	< 0.00600	< 0.00600	< 0.00600	< 0.00600	< 0.00600	< 0.00600	0.00363	< 0.00600	< 0.00600	< 0.00600	< 0.00600	0.00469	0.0120	< 0.0200	< 0.00600
20240919-M29 199-(SEP-VW)@4	Separator Assessment	09/19/2024	0.0401	7.95	8.99	< 0.00100	< 0.00500	< 0.00250	< 0.00650	< 0.00500	< 0.00500	< 0.00600	< 0.00600	< 0.00600	< 0.00600	< 0.00600	< 0.00600	< 0.00600	< 0.00600	< 0.00600	< 0.00600	< 0.00600	< 0.0200	< 0.0200	< 0.0200	< 0.00600
20241016-M29 199-(SEP-BASE02)@7	Separator Assessment	10/16/2024	< 0.100	< 4.00	< 4.00	< 0.00100	0.00346	< 0.00250	0.00300	0.00280	< 0.00500	< 0.00600	< 0.00600	< 0.00600	< 0.00600	< 0.00600	< 0.00600	< 0.00600	< 0.00600	< 0.00600	< 0.00600	< 0.00600	< 0.0200	< 0.0200	< 0.0200	< 0.00600
20241016-M29 199-(SEP-EW02)@7	Separator Assessment	10/16/2024	0.0486	3.70	7.99	< 0.00100	0.00197	< 0.00250	< 0.00650	< 0.00500	< 0.00500	< 0.00600	< 0.00600	< 0.00600	< 0.00600	< 0.00600	< 0.00600	< 0.00600	< 0.00600	< 0.00600	< 0.00600	< 0.00600	< 0.0200	< 0.0200	< 0.0200	< 0.00600
20241016-M29 199-(SEP-NW02)@7	Separator Assessment	10/16/2024	0.0253	< 4.00	4.04	< 0.00100	0.00195	< 0.00250	< 0.00650	< 0.00500	< 0.00500	< 0.00600	< 0.00600	< 0.00600	< 0.00600	< 0.00600	< 0.00600	< 0.00600	< 0.00600	< 0.00600	< 0.00600	< 0.00600	< 0.0200	< 0.0200	< 0.0200	< 0.00600
20241016-M29 199-(SEP-SW02)@7	Separator Assessment	10/16/2024	0.0783	12.2	10.9	< 0.00100	0.00203	< 0.00250	< 0.00650	< 0.00500	< 0.00500	< 0.00600	< 0.00600	< 0.00600	< 0.00600	< 0.00600	< 0.00600	< 0.00600	< 0.00600	< 0.00600	< 0.00600	< 0.00600	< 0.0200	0.00431	< 0.0200	< 0.00600
20240919-M29 199-(SEP-STOCK)	Separator Assessment	09/19/2024	0.0746	6.83	6.97	< 0.00100	< 0.00500	< 0.00250	< 0.00650	< 0.00500	< 0.00500	< 0.00600	< 0.00600	< 0.00600	< 0.00600	< 0.00600	< 0.00600	< 0.00600	< 0.00600	< 0.00600	< 0.00600	< 0.00600	< 0.0200	< 0.0200	< 0.0200	< 0.00600
20241016-M29 199-(SEP-STOCK02)	Separator Assessment	10/16/2024	0.756	5.93	8.34	< 0.00100	0.00215	< 0.00250	< 0.00650	< 0.00500	< 0.00500	< 0.00600	< 0.00600	< 0.00600	< 0.00600	< 0.00600	< 0.00600	< 0.00600	< 0.00600	< 0.00600	< 0.00600	< 0.0200	< 0.0200	< 0.0200	< 0.00600	
20240826-M29 199-(FC-MH)@1	Meter House Assessment	08/26/2024	0.0309	4.93	12.3	< 0.00100	< 0.00500	< 0.00250	< 0.00650	< 0.00500	< 0.00500	< 0.00600	< 0.00600	< 0.00600	< 0.00600	< 0.00600	< 0.00600	< 0.00600	< 0.00600	< 0.00600	< 0.00600	< 0.00600	< 0.0200	< 0.0200	< 0.0200	< 0.00600
20240826-M29 199-(FC-MH-FLE)@4	Meter House Assessment	08/26/2024	0.0258	4.50	7.76	< 0.00100	< 0.00500	< 0.00250	< 0.00650	< 0.00500	< 0.00500	< 0.00600	< 0.00600	< 0.00600	< 0.00600	< 0.00600	< 0.00600	< 0.00600	< 0.00600	< 0.00600	< 0.00600	< 0.00600	< 0.0200	< 0.0200	< 0.0200	< 0.00600
20240826-M29 199-(FC-MH-FLW)@4	Meter House Assessment	08/26/2024	0.0231	21.3	45.4	< 0.00100	< 0.00500	< 0.00250	< 0.00650	< 0.00500	< 0.00500	< 0.00600	< 0.00600	< 0.00600	< 0.00600	< 0.00600	< 0.00600	< 0.00600	< 0.00600	< 0.00600	< 0.00600	< 0.00600	< 0.0200	< 0.0200	< 0.0200	< 0.00600
20240919-M29 199-(MH-BASE)@4	Meter House Assessment	09/19/2024	0.0341	< 4.00	0.916	< 0.00100	< 0.00500	< 0.00250	< 0.00650	< 0.00500	< 0.00500	< 0.00600	< 0.00600	< 0.00600	< 0.00600	< 0.00600	< 0.00600	< 0.00600	< 0.00600	< 0.00600	< 0.00600	< 0.00600	< 0.0200	< 0.0200	< 0.0200	< 0.00600
20240919-M29 199-(MH-EW)@4	Meter House Assessment	09/19/2024	0.0364	4.41	6.95	< 0.00100	< 0.00500	< 0.00250	< 0.00650	< 0.00500	< 0.00500	< 0.00600	< 0.00600	< 0.00600	< 0.00600	< 0.00600	< 0.00600	< 0.00600	< 0.00600	< 0.00600	< 0.00600	< 0.00600	< 0.0200	< 0.0200	< 0.0200	< 0.00600
20240919-M29 199-(MH-NW)@4	Meter House Assessment	09/19/2024	0.0315	6.52	11.8	< 0.00100	< 0.00500	< 0.00250	< 0.00650	< 0.00500	< 0.00500	< 0.00600														

Notes:
Bold with silver highlight: Exceeds RSSLs
"<" (as in, less than laboratory reporting detection limit)

TABLE 3 - ORGANIC ANALYTES
QB ENERGY OPERATING, LLC
CORRAL CREEK-61S99W 29SWSW PAD (CORRAL CREEK 4508 WELLHEAD)
REMEDIATION PROJECT NUMBER: 36180
SWSW SEC. 29 T1S R99W
RIO BLANCO COUNTY, COLORADO

Analyte			GRO	DRO	ORO	Benzene	Toluene	Ethylbenzene	Total Xylenes	1,2,4-TMB	1,3,5-TMB	Acenaphthene	Anthracene	Benz(a)anthracene	Benzo(b)fluoranthene	Benzo(k)fluoranthene	Benzo(a)pyrene	Chrysene	Dibenz(a,h)anthracene	Fluoranthene	Fluorene	Indeno(1,2,3-cd)Pyre	1-Methylnaphthalene	2-Methylnaphthalene	Naphthalene	Pyrene	
915-1 RESIDENTIAL SOIL			500			1.2	490	5.8	58	30	27	360	1800	1.1	1.1	11	0.11	110	0.11	240	240	1.1	18	24	2	180	
Units			mg/kg			mg/kg	mg/kg	mg/kg	mg/kg	mg/kg	mg/kg	mg/kg	mg/kg	mg/kg	mg/kg	mg/kg	mg/kg	mg/kg	mg/kg	mg/kg	mg/kg	mg/kg	mg/kg	mg/kg	mg/kg	mg/kg	
20240919-M29 199-(T03-VWV)@10	Buried Drip Tank Assessment	09/19/2024	0.0474	6.57	14.5	< 0.00100	< 0.00500	< 0.00250	< 0.00650	< 0.00500	< 0.00500	< 0.00600	< 0.00600	< 0.00600	< 0.00600	< 0.00600	< 0.00600	< 0.00600	< 0.00600	< 0.00600	< 0.00600	< 0.0200	< 0.0200	< 0.0200	< 0.00600		
20240919-M29 199-(T03-STOCK)	Buried Drip Tank Assessment	09/19/2024	4.12	70.1	87.8	< 0.00100	< 0.00500	< 0.00250	< 0.00650	< 0.00500	0.00338	< 0.00600	< 0.00600	< 0.00600	< 0.00600	< 0.00600	< 0.00600	< 0.00600	< 0.00600	< 0.00600	0.00225	< 0.00600	0.00941	0.00538	< 0.0200	< 0.00600	
20250610-M29-199-(T03-BASE02)@10	Buried Drip Tank Assessment	6/10/2025	< 0.100	10.2	14.7	< 0.00100	< 0.0100	< 0.0100	< 0.100	< 0.00500	< 0.00500	< 0.0330	< 0.0330	< 0.00600	< 0.0330	< 0.0330	< 0.0330	< 0.0330	< 0.0330	< 0.0330	< 0.0330	< 0.0330	< 0.0030	< 0.0120	< 0.0030	< 0.0330	
20250610-M29-199-(T03-BASE03)@10	Buried Drip Tank Assessment	6/10/2025	< 0.100	28.4	24.4	< 0.00100	< 0.0100	< 0.0100	< 0.100	< 0.00500	< 0.00500	< 0.0330	< 0.0330	< 0.00600	< 0.0330	< 0.0330	< 0.0330	< 0.0330	< 0.0330	< 0.0330	< 0.0330	< 0.0330	< 0.0030	< 0.0120	< 0.0030	< 0.0330	
20250610-M29-199-(T03-BASE04)@10	Buried Drip Tank Assessment	6/10/2025	< 0.100	12.3	16.3	< 0.00100	< 0.0100	< 0.0100	< 0.100	< 0.00500	< 0.00500	< 0.0330	< 0.0330	< 0.00600	< 0.0330	< 0.0330	< 0.0330	< 0.0330	< 0.0330	< 0.0330	< 0.0330	< 0.0330	< 0.0030	< 0.0120	< 0.0030	< 0.0330	
20250610-M29-199-(T03-BASE05)@10	Buried Drip Tank Assessment	6/10/2025	< 0.100	27.3	30.8	< 0.00100	< 0.0100	< 0.0100	< 0.100	< 0.00500	< 0.00500	< 0.0330	< 0.0330	< 0.00600	< 0.0330	< 0.0330	< 0.0330	< 0.0330	< 0.0330	< 0.0330	< 0.0330	< 0.0330	< 0.0030	< 0.0120	< 0.0030	< 0.0330	
20240827-M29 199 (FC-PIT01)@7	Historic Pit Assessment	08/27/2024	0.0453	9.03	21.6	< 0.00100	< 0.00500	< 0.00250	< 0.00650	< 0.00500	< 0.00500	< 0.00600	< 0.00600	< 0.00600	< 0.00600	< 0.00600	< 0.00600	< 0.00600	< 0.00600	< 0.00600	< 0.00600	< 0.0200	< 0.0200	< 0.0200	< 0.00600		
20240827-M29 199 (FC-PIT02)@7	Historic Pit Assessment	08/27/2024	14.4	36.0	12.9	< 0.00400	0.00990	0.00860	0.0156	0.0142	< 0.0200	< 0.00600	< 0.00600	< 0.00600	< 0.00600	< 0.00600	< 0.00600	< 0.00600	< 0.00600	< 0.00600	< 0.00600	< 0.0200	< 0.0200	< 0.0200	< 0.00600		
20240827-M29 199 (FC-PIT03)@7	Historic Pit Assessment	08/27/2024	4.15	45.0	21.1	0.000475	< 0.00500	0.00500	0.00510	0.0187	0.0133	0.00457	< 0.00600	< 0.00600	< 0.00600	< 0.00600	< 0.00600	< 0.00600	< 0.00600	< 0.00600	< 0.00600	0.0135	< 0.00600	0.121	0.161	0.0314	< 0.00600
20241017-M29 199-(SB01)@1	Historic Pit Assessment	10/17/2024	0.221	4.31	13.6	0.00103	0.00780	0.00300	0.0117	0.00193	< 0.00500	< 0.00600	< 0.00600	< 0.00600	< 0.00600	< 0.00600	< 0.00600	< 0.00600	< 0.00600	< 0.00600	< 0.00600	< 0.0200	< 0.0200	< 0.0200	< 0.00600		
20241017-M29 199-(SB01)@5	Historic Pit Assessment	10/17/2024	0.122	29.0	42.7	< 0.00100	< 0.00500	< 0.00250	0.000900	< 0.00500	< 0.00500	< 0.00600	< 0.00600	< 0.00600	< 0.00600	< 0.00600	< 0.00600	0.00659	< 0.00600	< 0.00600	< 0.00600	< 0.0200	< 0.0200	< 0.0200	< 0.00600		
20241017-M29 199-(SB01)@10	Historic Pit Assessment	10/17/2024	0.0978	< 4.00	1.82	< 0.00100	0.00147	< 0.00250	< 0.00650	< 0.00500	< 0.00500	< 0.00600	< 0.00600	< 0.00600	< 0.00600	< 0.00600	< 0.00600	< 0.00600	< 0.00600	< 0.00600	< 0.00600	< 0.0200	< 0.0200	< 0.0200	< 0.00600		
20241017-M29 199-(SB01)@20	Historic Pit Assessment	10/17/2024	0.0481	36.2	23.2	< 0.00100	0.00145	< 0.00250	< 0.00650	< 0.00500	< 0.00500	< 0.00600	< 0.00600	< 0.00600	< 0.00600	< 0.00600	< 0.00600	< 0.00600	< 0.00600	< 0.00600	< 0.00600	< 0.0200	< 0.0200	< 0.0200	< 0.00600		
20241017-M29 199-(SB01)@30	Historic Pit Assessment	10/17/2024	0.111	45.4	25.1	< 0.00100	0.00145	< 0.00250	< 0.00650	< 0.00500	< 0.00500	< 0.00600	< 0.00600	< 0.00600	< 0.00600	< 0.00600	< 0.00600	< 0.00600	< 0.00600	< 0.00600	< 0.00600	< 0.00600	0.00462	0.0139	0.00772	< 0.00600	
20241017-M29 199-(SB01)@40	Historic Pit Assessment	10/17/2024	0.0236	13.4	8.80	< 0.00100	0.00153	< 0.00250	< 0.00650	< 0.00500	< 0.00500	< 0.00600	< 0.00600	< 0.00600	< 0.00600	< 0.00600	< 0.00600	< 0.00600	< 0.00600	< 0.00600	< 0.00600	< 0.0200	< 0.0200	< 0.0200	< 0.00600		
20241017-M29 199-(SB01)@50	Historic Pit Assessment	10/17/2024	0.0528	5.54	5.88	< 0.00100	0.00147	< 0.00250	< 0.00650	< 0.00500	< 0.00500	< 0.00600	< 0.00600	< 0.00600	< 0.00600	< 0.00600	< 0.00600	< 0.00600	< 0.00600	< 0.00600	< 0.00600	< 0.0200	< 0.0200	< 0.0200	< 0.00600		
20241018-M29 199-(SB02)@1	Historic Pit Assessment	10/18/2024	0.0803	3.25	4.72	< 0.00100	0.00150	< 0.00250	< 0.00650	< 0.00500	< 0.00500	< 0.00600	< 0.00600	< 0.00600	< 0.00600	< 0.00600	< 0.00600	< 0.00600	< 0.00600	< 0.00600	< 0.00600	< 0.0200	< 0.0200	< 0.0200	< 0.00600		
20241018-M29 199-(SB02)@5	Historic Pit Assessment	10/18/2024	0.0527	87.7	38.2	< 0.00100	0.00133	< 0.00250	< 0.00650	< 0.00500	< 0.00500	< 0.00600	< 0.00600	< 0.00600	< 0.00600	< 0.00600	< 0.00600	< 0.00600	< 0.00600	< 0.00600	< 0.00600	< 0.0200	< 0.0200	< 0.0200	< 0.00600		
20241018-M29 199-(SB02)@10	Historic Pit Assessment	10/18/2024	3.66	114	45.3	< 0.00100	0.00240	0.00105	0.0168	0.0701	0.0284	< 0.00600	< 0.00600	< 0.00600	< 0.00600	< 0.00600	< 0.00600	< 0.00600	< 0.00600	< 0.00600	< 0.00600	0.0135	< 0.00600	0.0689	0.103	0.0132	< 0.00600
20241018-M29 199-(SB02)@20	Historic Pit Assessment	10/18/2024	0.0765	60.7	23.5	< 0.00100	0.00147	< 0.00250	< 0.00650	< 0.00500	< 0.00500	< 0.00600	< 0.00600	< 0.00600	< 0.00600	< 0.00600	< 0.00600	< 0.00600	< 0.00600	< 0.00600	< 0.00600	0.00372	< 0.00600	0.0161	0.0231	< 0.0200	< 0.00600
20241018-M29 199-(SB02)@30	Historic Pit Assessment	10/18/2024	0.0488	129	57.9	< 0.00100	0.00138	< 0.00250	< 0.00650	< 0.00500	< 0.00500	< 0.00600	< 0.00600	< 0.00600	< 0.00600	< 0.00600	< 0.00600	< 0.00600	< 0.00600	< 0.00600	< 0.00600	< 0.0200	< 0.0200	< 0.0200	< 0.00600		
20241018-M29 199-(SB02)@40	Historic Pit Assessment	10/18/2024	1.65	35.0	11.6	< 0.00100	0.00173	< 0.00250	0.00250	< 0.00500	< 0.00500	< 0.00600	< 0.00600	< 0.00600	< 0.00600	< 0.00600	< 0.00600	< 0.00600	< 0.00600	< 0.00600	< 0.00600	< 0.0200	< 0.0200	< 0.0200	<		

Notes:
Bold with silver highlight: Exceeds RSSLs
"<" (as in, less than laboratory reporting detection limit)

TABLE 3 - ORGANIC ANALYTES
QB ENERGY OPERATING, LLC
CORRAL CREEK-61S99W 29SWSW PAD (CORRAL CREEK 4508 WELLHEAD)
REMEDIATION PROJECT NUMBER: 36180
SWSW SEC. 29 T1S R99W
RIO BLANCO COUNTY, COLORADO

Analyte			GRO	DRO	ORO	Benzene	Toluene	Ethylbenzene	Total Xylenes	1,2,4-TMB	1,3,5-TMB	Acenaphthene	Anthracene	Benz(a)anthracene	Benzo(b)fluoranthene	Benzo(k)fluoranthene	Benzo(a)pyrene	Chrysene	Dibenz(a,h)anthracene	Fluoranthene	Fluorene	Indeno(1,2,3-cd)Pyrene	1-Methylnaphthalene	2-Methylnaphthalene	Naphthalene	Pyrene
915-1 RESIDENTIAL SOIL			500			1.2	490	5.8	58	30	27	360	1800	1.1	1.1	11	0.11	110	0.11	240	240	1.1	18	24	2	180
Units			mg/kg			mg/kg	mg/kg	mg/kg	mg/kg	mg/kg	mg/kg	mg/kg	mg/kg	mg/kg	mg/kg	mg/kg	mg/kg	mg/kg	mg/kg	mg/kg	mg/kg	mg/kg	mg/kg	mg/kg	mg/kg	mg/kg
20241122-M29 199-(SB04)@40	Historic Pit Assessment	11/22/2024	0.0236	3.97	6.25	< 0.00100	< 0.00500	< 0.00250	< 0.00650	< 0.00500	< 0.00500	< 0.00600	< 0.00600	< 0.00600	< 0.00600	< 0.00600	< 0.00600	< 0.00600	< 0.00600	< 0.00600	< 0.00600	< 0.0200	< 0.0200	< 0.0200	< 0.00600	
20241125-M29 199-(SB05)@10	Historic Pit Assessment	11/25/2024	< 0.100	< 4.00	1.94	< 0.00100	< 0.00500	< 0.00250	< 0.00650	< 0.00500	< 0.00500	< 0.00600	< 0.00600	< 0.00600	< 0.00600	< 0.00600	< 0.00600	< 0.00600	< 0.00600	< 0.00600	< 0.00600	< 0.0200	< 0.0200	< 0.0200	< 0.00600	
20241125-M29 199-(SB05)@20	Historic Pit Assessment	11/25/2024	< 0.100	< 4.00	0.874	< 0.00100	< 0.00500	< 0.00250	< 0.00650	< 0.00500	< 0.00500	< 0.00600	< 0.00600	< 0.00600	< 0.00600	< 0.00600	< 0.00600	< 0.00600	< 0.00600	< 0.00600	< 0.00600	< 0.0200	< 0.0200	< 0.0200	< 0.00600	
20241125-M29 199-(SB05)@30	Historic Pit Assessment	11/25/2024	< 0.100	8.94	5.38	< 0.00100	< 0.00500	< 0.00250	< 0.00650	< 0.00500	< 0.00500	< 0.00600	< 0.00600	< 0.00600	< 0.00600	< 0.00600	< 0.00600	< 0.00600	< 0.00600	< 0.00600	< 0.00600	< 0.0200	< 0.0200	< 0.0200	< 0.00600	
20241125-M29 199-(SB05)@40	Historic Pit Assessment	11/25/2024	< 0.100	1.82	2.69	< 0.00100	< 0.00500	< 0.00250	< 0.00650	< 0.00500	< 0.00500	< 0.00600	< 0.00600	< 0.00600	< 0.00600	< 0.00600	< 0.00600	< 0.00600	< 0.00600	< 0.00600	< 0.00600	< 0.0200	< 0.0200	< 0.0200	< 0.00600	
20241125-M29 199-(SB06)@10	Historic Pit Assessment	11/25/2024	< 0.100	< 4.00	0.980	< 0.00100	< 0.00500	< 0.00250	< 0.00650	< 0.00500	< 0.00500	< 0.00600	< 0.00600	< 0.00600	< 0.00600	< 0.00600	< 0.00600	< 0.00600	< 0.00600	< 0.00600	< 0.00600	< 0.0200	< 0.0200	< 0.0200	< 0.00600	
20241125-M29 199-(SB06)@20	Historic Pit Assessment	11/25/2024	< 0.100	< 4.00	0.693	< 0.00100	< 0.00500	< 0.00250	< 0.00650	< 0.00500	< 0.00500	0.00569	0.00601	< 0.00600	< 0.00600	< 0.00600	< 0.00600	< 0.00600	< 0.00600	0.00544	0.00494	< 0.00600	0.00548	0.0102	0.0350	0.00381
20241125-M29 199-(SB06)@30	Historic Pit Assessment	11/25/2024	< 0.100	< 4.00	1.37	< 0.00100	< 0.00500	< 0.00250	< 0.00650	< 0.00500	< 0.00500	< 0.00600	< 0.00600	< 0.00600	< 0.00600	< 0.00600	< 0.00600	< 0.00600	< 0.00600	< 0.00600	< 0.00600	< 0.0200	< 0.0200	< 0.0200	< 0.00600	
20241125-M29 199-(SB06)@40	Historic Pit Assessment	11/25/2024	0.0257	< 4.00	1.33	< 0.00100	< 0.00500	< 0.00250	< 0.00650	< 0.00500	< 0.00500	< 0.00600	< 0.00600	< 0.00600	< 0.00600	< 0.00600	< 0.00600	< 0.00600	< 0.00600	< 0.00600	< 0.00600	< 0.0200	< 0.0200	< 0.0200	< 0.00600	
20241125-M29 199-(SB07)@10	Historic Pit Assessment	11/25/2024	< 0.100	< 4.00	1.59	< 0.00100	0.00205	< 0.00250	0.00483	0.00633	0.00347	< 0.00600	< 0.00600	< 0.00600	< 0.00600	< 0.00600	< 0.00600	< 0.00600	< 0.00600	< 0.00600	< 0.00600	< 0.0200	< 0.0200	< 0.0200	< 0.00600	
20241125-M29 199-(SB07)@20	Historic Pit Assessment	11/25/2024	0.0265	< 4.00	1.34	0.000575	0.00140	< 0.00250	0.00103	< 0.00500	< 0.00500	< 0.00600	< 0.00600	< 0.00600	< 0.00600	< 0.00600	< 0.00600	< 0.00600	< 0.00600	< 0.00600	< 0.00600	< 0.0200	< 0.0200	< 0.0200	< 0.00600	
20241125-M29 199-(SB07)@30	Historic Pit Assessment	11/25/2024	0.0290	< 4.00	1.37	< 0.00100	< 0.00500	< 0.00250	< 0.00650	< 0.00500	< 0.00500	< 0.00600	< 0.00600	< 0.00600	< 0.00600	< 0.00600	< 0.00600	< 0.00600	< 0.00600	< 0.00600	< 0.00600	< 0.0200	< 0.0200	< 0.0200	< 0.00600	
20241125-M29 199-(SB07)@40	Historic Pit Assessment	11/25/2024	< 0.100	< 4.00	0.534	< 0.00100	< 0.00500	< 0.00250	< 0.00650	< 0.00500	< 0.00500	< 0.00600	< 0.00600	< 0.00600	< 0.00600	< 0.00600	< 0.00600	< 0.00600	< 0.00600	< 0.00600	< 0.00600	< 0.0200	< 0.0200	< 0.0200	< 0.00600	
20241125-M29 199-(SB08)@10	Historic Pit Assessment	11/25/2024	0.0235	< 4.00	0.384	< 0.00100	< 0.00500	< 0.00250	< 0.00650	< 0.00500	< 0.00500	< 0.00600	< 0.00600	< 0.00600	< 0.00600	< 0.00600	< 0.00600	< 0.00600	< 0.00600	< 0.00600	< 0.00600	< 0.0200	< 0.0200	< 0.0200	< 0.00600	
20241125-M29 199-(SB08)@20	Historic Pit Assessment	11/25/2024	< 0.100	< 4.00	0.674	< 0.00100	< 0.00500	< 0.00250	< 0.00650	< 0.00500	< 0.00500	< 0.00600	< 0.00600	< 0.00600	< 0.00600	< 0.00600	< 0.00600	< 0.00600	< 0.00600	< 0.00600	< 0.00600	< 0.0200	< 0.0200	< 0.0200	< 0.00600	
20241125-M29 199-(SB08)@30	Historic Pit Assessment	11/25/2024	0.0421	< 4.00	2.59	< 0.00100	< 0.00500	< 0.00250	< 0.00650	< 0.00500	< 0.00500	< 0.00600	< 0.00600	< 0.00600	< 0.00600	< 0.00600	< 0.00600	< 0.00600	< 0.00600	< 0.00600	< 0.00600	< 0.0200	< 0.0200	< 0.0200	< 0.00600	
20241125-M29 199-(SB08)@40	Historic Pit Assessment	11/25/2024	0.0344	< 4.00	1.76	< 0.00100	< 0.00500	< 0.00250	< 0.00650	< 0.00500	< 0.00500	< 0.00600	< 0.00600	< 0.00600	< 0.00600	< 0.00600	< 0.00600	< 0.00600	< 0.00600	< 0.00600	< 0.00600	< 0.0200	< 0.0200	< 0.0200	< 0.00600	
20250122-M29 199-(SB09)@10	Historic Pit Assessment	01/22/2025	0.0381	2.28	1.81	< 0.00100	< 0.00500	< 0.00250	< 0.00650	< 0.00500	< 0.00500	< 0.00600	< 0.00600	< 0.00600	< 0.00600	< 0.00600	< 0.00600	< 0.00600	< 0.00600	< 0.00600	< 0.00600	< 0.0200	< 0.0200	< 0.0200	< 0.00600	
20250122-M29 199-(SB09)@20	Historic Pit Assessment	01/22/2025	0.0542	< 4.00	< 4.00	< 0.00100	< 0.00500	< 0.00250	< 0.00650	< 0.00500	< 0.00500	< 0.00600	< 0.00600	< 0.00600	< 0.00600	< 0.00600	< 0.00600	< 0.00600	< 0.00600	< 0.00600	< 0.00600	< 0.0200	< 0.0200	< 0.0200	< 0.00600	
20250122-M29 199-(SB09)@30	Historic Pit Assessment	01/22/2025	0.0517	1.87	1.92	< 0.00100	< 0.00500	< 0.00250	< 0.00650	< 0.00500	< 0.00500	< 0.00600	< 0.00600	< 0.00600	< 0.00600	< 0.00600	< 0.00600	< 0.00600	< 0.00600	< 0.00600	< 0.00600	< 0.0200	< 0.0200	< 0.0200	< 0.00600	
20250122-M29 199-(SB09)@40	Historic Pit Assessment	01/22/2025	0.0681	< 4.00	1.09	< 0.00100	< 0.00500	< 0.00250	< 0.00650	< 0.00500	< 0.00500	< 0.00600	< 0.00600	< 0.00600	< 0.00600	< 0.00600	< 0.00600	< 0.00600	< 0.00600	< 0.00600	< 0.00600	< 0.0200	< 0.0200	< 0.0200	< 0.00600	
20240925-M29 199-(FC-PL01)@5	Off-Location Pipeline Assessment	09/25/2024	0.0878	9.25	30.2	< 0.00100	< 0.00500	< 0.00250	< 0.00650	< 0.00500	< 0.00500	< 0.00600	< 0.00600	0.00231	0.00202	< 0.00600	< 0.00600	0.00322	< 0.00600	0.00635	< 0.00600	< 0.00600	< 0.0200	< 0.0200	< 0.0200	0.00469
20240925-M29 199-(FC-PL02)@4	Off-Location Pipeline Assessment	09/25/2024	0.0707	< 20.0	39.1	< 0.00100	< 0.00500	< 0.00250	< 0.00650	< 0.00500	< 0.00500	< 0.00600	< 0.00600	< 0.00600	< 0.00600	< 0.00600	< 0.00600	< 0.00600	< 0.00600	< 0.00600	< 0.00600	< 0.0200	< 0.0200	< 0.0200	< 0.00600	

Notes:
Bold with silver highlight: Exceeds RSSLs
"<" (as in, less than laboratory reporting detection limit)