

TABLE 1
FIELD DATA SUMMARY TABLE
NOBLE 100322
FARR C 18-25, WELD COUNTY, COLORADO
REM # 24172

Sample ID	Sample Date	Depth (ft)	GPS Data Latitude/Longitude		PDOP Value	VOC Concentration (ppm)
Backfill	6/25/2024	N/A	N/A	N/A	N/A	0.0 ppm
SEP01 SURF	12/08/2022	0.5 Ft	40.3105920	-104.5980250	-	0.0 ppm
FL01 2 Ft	12/8/2022	2.0 Ft	40.3086812	-104.5973979	-	0.0 ppm
FL02 2 Ft	12/8/2022	2.0 Ft	40.3088911	-104.5976863	-	0.0 ppm
FL03 2 Ft	12/8/2022	2.0 Ft	40.3095024	-104.5977525	-	0.0 ppm
FL04 2 Ft	12/8/2022	2.0 Ft	40.3100603	-104.5979625	-	0.0 ppm
FL05 2 Ft	12/8/2022	2.0 Ft	40.3104074	-104.5980305	-	0.0 ppm
N01@3.0'	6/25/2024	3.0 Ft	40.3086944	-104.5973411	0.9	0.0 ppm
S01@3.0'	6/25/2024	3.0 Ft	40.3086663	-104.5973697	0.9	0.0 ppm
E01@3.0'	6/25/2024	3.0 Ft	40.3086681	-104.5973327	0.9	0.0 ppm
W01@3.0'	6/25/2024	3.0 Ft	40.3086902	-104.5973768	0.9	0.0 ppm
B01@4.0'	6/25/2024	4.0 Ft	40.3086774	-104.5973547	0.9	0.0 ppm

1. Global Positioning System (GPS) data is provided in decimal degrees using North American Datum (NAD) 83 UTMZone 13 North.

2. Volatile organic compound (VOC) concentrations are measured in the field using a photoionization detector (PID).

PDOP = Position Dilution of Precision

ppm = Parts per million

in. = Inches

ft. = Feet

bgs = Below ground surface

Material excavated and transported off site for disposal.

TABLE 2
SUMMARY OF VOLATILE ORGANIC SOIL CHEMISTRY DATA
NOBLE 100322
FARR C 18-25, WELD COUNTY, COLORADO
REM # 24172

Sample ID	Sample Date	Depth (ft)	Benzene (mg/kg)	Toluene (mg/kg)	Ethyl-Benzene (mg/kg)	Xylenes (mg/kg)	1,2,4- Trimethyl- Benzene (mg/kg)	1,3,5- Trimethyl- Benzene (mg/kg)	Naphthalene (mg/kg)	TPH (mg/kg)	TPH GRO (mg/kg)	TPH DRO (mg/kg)	TPH ORO (mg/kg)
ECMC Table 915-1 Limits (Residential SSL)			1.2	490	5.8	58	30	27	2	500	500**		
ECMC Table 915-1 Limits (Protection of Groundwater SSL)			0.0026	0.69	0.78	9.9	0.0081	0.0087	0.0038	500	500**		
Backfill	6/25/2024	Grab	<0.0020	<0.0050	<0.0050	<0.010	<0.0050	<0.0050	<0.0038	<500	<0.50	<50	<50
SEP01 SURF	12/08/2022	0.5 Ft	<0.0020	<0.0050	<0.0050	<0.010	<0.0050	<0.0050	<0.0038	<500	<0.50	<50	<50
FL01 2ft	12/08/2022	2.0 Ft	<0.0020	<0.0050	<0.0050	<0.010	<0.0050	<0.0050	<0.0038	<500	<0.50	<50	<50
N01@3.0'	6/25/2024	3.0 Ft	<0.0020	<0.0050	<0.0050	<0.010	<0.0050	<0.0050	<0.0038	<500	<0.50	<50	<50
S01@3.0'	6/25/2024	3.0 Ft	<0.0020	<0.0050	<0.0050	<0.010	<0.0050	<0.0050	<0.0038	<500	<0.50	<50	<50
E01@3.0'	6/25/2024	3.0 Ft	<0.0020	<0.0050	<0.0050	<0.010	<0.0050	<0.0050	<0.0038	<500	<0.50	<50	<50
W01@3.0'	6/25/2024	3.0 Ft	<0.0020	<0.0050	<0.0050	<0.010	<0.0050	<0.0050	<0.0038	<500	<0.50	<50	<50
B01@4.0'	6/25/2024	4.0 Ft	<0.0020	<0.0050	<0.0050	<0.010	<0.0050	<0.0050	<0.0038	<500	<0.50	<50	<50
BKG-1 4ft	06/12/2023	4.0 Ft	<0.0020	<0.0050	<0.0050	<0.010	<0.0050	<0.0050	<0.0038	<500	<0.50	<50	<50
BKG-2 4ft	06/12/2023	4.0 Ft	<0.0020	<0.0050	<0.0050	<0.010	<0.0050	<0.0050	<0.0038	<500	<0.50	<50	<50
BKG-3 4ft	06/12/2023	4.0 Ft	<0.0020	<0.0050	<0.0050	<0.010	<0.0050	<0.0050	<0.0038	<500	<0.50	<50	<50
BKG-4 4ft	06/12/2023	4.0 Ft	<0.0020	<0.0050	<0.0050	<0.010	<0.0050	<0.0050	<0.0038	<500	<0.50	<50	<50
BKG-5 4ft	06/12/2023	4.0 Ft	<0.0020	<0.0050	<0.0050	<0.010	<0.0050	<0.0050	<0.0038	<500	<0.50	<50	<50
BKG-1 12ft	06/12/2023	12.0 Ft	<0.0020	<0.0050	<0.0050	<0.010	<0.0050	<0.0050	<0.0038	<500	<0.50	<50	<50
BKG-5 12ft	06/12/2023	12.0 Ft	<0.0020	<0.0050	<0.0050	<0.010	<0.0050	<0.0050	<0.0038	<500	<0.50	<50	<50

1. Bold values exceed the ECMC Table 915-1 limit(s)
 2. Red & blue highlighted soil analytical values indicate an exceedance of the referenced soil screening level (SSL)
 3. * Indicates laboratory minimum detection limit in excess of SSL
 4. ** Summation of GRO+DRO+ORO must be less than 500 mg/kg
- (<) = Analytical result is less than the indicated laboratory reporting limit.
TPH-GRO = Total petroleum hydrocarbons - gasoline range organics
TPH-DRO = Total petroleum hydrocarbons - diesel range organics
TPH-ORO = Total petroleum hydrocarbons - oil range organics
mg/kg = Milligrams per kilogram
ft. = Feet
bgs = Below ground surface
NA - Not analyzed
- Material excavated and transported off site for disposal.

TABLE 3
SUMMARY OF POLYCYCLIC AROMATIC HYDROCARBON SOIL CHEMISTRY DATA
NOBLE 100322
FARR C 18-25, WELD COUNTY, COLORADO
REM # 24172

Sample ID	Sample Date	Depth (ft)	Acenaphthene (mg/kg)	Anthracene (mg/kg)	Benzo (a) Anthracene (mg/kg)	Benzo (a) Pyrene (mg/kg)	Benzo (b) Fluoranthene (mg/kg)	Benzo (k) Fluoranthene (mg/kg)	Chrysene (mg/kg)	Dibenzo (a,h) Anthracene (mg/kg)	Fluoranthene (mg/kg)	Fluorene (mg/kg)	Indeno (1,2,3- cd) Pyrene (mg/kg)	Pyrene (mg/kg)	1-Methyl - Naphthalene (mg/kg)	2-Methyl- Naphthalene (mg/kg)
ECMC Table 915-1 Limits (Residential SSL)			360	1800	1.1	0.11	1.1	11	110	0.11	240	240	1.1	180	18	24
ECMC Table 915-1 Limits (Protection of Groundwater SSL)			0.55	5.8	0.011	0.24	0.3	2.9	9	0.096	8.9	0.54	0.98	1.3	0.006	0.019
Backfill	6/25/2024	N/A	<0.00500	<0.00500	<0.00500	<0.00500	<0.00500	<0.00500	<0.00500	<0.00500	<0.00500	<0.00500	<0.00500	<0.00500	<0.00500	<0.00500
SEP01 SURF	12/08/2022	0.5 Ft	<0.00500	<0.00500	<0.00500	<0.00500	<0.00500	<0.00500	<0.00500	<0.00500	<0.00500	<0.00500	<0.00500	<0.00500	<0.00500	<0.00500
FL01 2ft	12/08/2022	2.0 Ft	<0.00500	<0.00500	0.0170	0.0118	0.0178	0.00704	0.0179	<0.00500	0.0333	<0.00500	0.00898	0.0299	<0.00500	<0.00500
N01@3.0'	6/25/2024	3.0 Ft	<0.00500	<0.00500	<0.00500	<0.00500	<0.00500	<0.00500	<0.00500	<0.00500	<0.00500	<0.00500	<0.00500	<0.00500	<0.00500	<0.00500
S01@3.0'	6/25/2024	3.0 Ft	<0.00500	<0.00500	<0.00500	<0.00500	<0.00500	<0.00500	<0.00500	<0.00500	<0.00500	<0.00500	<0.00500	<0.00500	<0.00500	<0.00500
E01@3.0'	6/25/2024	3.0 Ft	<0.00500	<0.00500	<0.00500	<0.00500	<0.00500	<0.00500	<0.00500	<0.00500	<0.00500	<0.00500	<0.00500	<0.00500	<0.00500	<0.00500
W01@3.0'	6/25/2024	3.0 Ft	<0.00500	<0.00500	<0.00500	<0.00500	<0.00500	<0.00500	<0.00500	<0.00500	<0.00500	<0.00500	<0.00500	<0.00500	<0.00500	<0.00500
B01@4.0'	6/25/2024	4.0 Ft	<0.00500	<0.00500	<0.00500	<0.00500	<0.00500	<0.00500	<0.00500	<0.00500	<0.00500	<0.00500	<0.00500	<0.00500	<0.00500	<0.00500
BKG-1 4ft	06/12/2023	4.0 Ft	<0.00500	<0.00500	<0.00500	<0.00500	<0.00500	<0.00500	<0.00500	<0.00500	<0.00500	<0.00500	<0.00500	<0.00500	<0.00500	<0.00500
BKG-2 4ft	06/12/2023	4.0 Ft	<0.00500	<0.00500	<0.00500	<0.00500	<0.00500	<0.00500	<0.00500	<0.00500	<0.00500	<0.00500	<0.00500	<0.00500	<0.00500	<0.00500
BKG-3 4ft	06/12/2023	4.0 Ft	<0.00500	<0.00500	<0.00500	<0.00500	<0.00500	<0.00500	<0.00500	<0.00500	<0.00500	<0.00500	<0.00500	<0.00500	<0.00500	<0.00500
BKG-4 4ft	06/12/2023	4.0 Ft	<0.00500	<0.00500	<0.00500	<0.00500	<0.00500	<0.00500	<0.00500	<0.00500	<0.00500	<0.00500	<0.00500	<0.00500	<0.00500	<0.00500
BKG-5 4ft	06/12/2023	4.0 Ft	<0.00500	<0.00500	<0.00500	0.00545	<0.00500	<0.00500	<0.00500	<0.00500	<0.00500	<0.00500	<0.00500	<0.00500	<0.00500	<0.00500
BKG-1 12ft	06/12/2023	12.0 Ft	<0.00500	<0.00500	<0.00500	<0.00500	<0.00500	<0.00500	<0.00500	<0.00500	<0.00500	<0.00500	<0.00500	<0.00500	<0.00500	<0.00500
BKG-5 12ft	06/12/2023	12.0 Ft	<0.00500	<0.00500	<0.00500	<0.00500	<0.00500	<0.00500	<0.00500	<0.00500	<0.00500	<0.00500	<0.00500	<0.00500	<0.00500	<0.00500

1. Bold values exceed the ECMC Table 915-1 limit(s)
2. Red & blue highlighted soil analytical values indicate an exceedance of the referenced soil screening level (SSL)
3. * Indicates laboratory minimum detection limit in excess of SSL
4. ** Summation of GRO+DRO+ORO must be less than 500 mg/kg
(<) = Analytical result is less than the indicated laboratory reporting limit.
TPH-GRO = Total petroleum hydrocarbons - gasoline range organics
TPH-DRO = Total petroleum hydrocarbons - diesel range organics
TPH-ORO = Total petroleum hydrocarbons - oil range organics
mg/kg = Milligrams per kilogram
ft. = Feet
bgs = Below ground surface
NA - Not analyzed
Material excavated and transported off site for disposal.

TABLE 4
SUMMARY OF SOIL SUITABILITY FOR RECLAMATION
NOBLE 100322
FARR C 18-25, WELD COUNTY, COLORADO
REM # 24172

Sample ID	Sample Date	Depth (ft)	pH (Standard Units)	EC (mmhos/cm)	SAR (Standard Units)	Boron (mg/L)
ECMC Table 915-1 Soil Suitability Limits			6 - 8.3	4	6	2
Backfill	6/25/2024	N/A	8.20	0.272	0.537	<2.00
SEP01 SURF	12/08/2022	0.5 Ft	7.65	0.554	1.06	1.13
FL01 2ft	12/08/2022	2.0 Ft	8.07	0.575	0.761	0.999
N01@3.0'	6/25/2024	3.0 Ft	7.14	0.440	1.53	<2.00
S01@3.0'	6/25/2024	3.0 Ft	6.69	0.374	2.20	<2.00
E01@3.0'	6/25/2024	3.0 Ft	8.66	0.531	0.445	<2.00
W01@3.0'	6/25/2024	3.0 Ft	8.27	0.389	0.834	<2.00
B01@4.0'	6/25/2024	4.0 Ft	8.59	0.227	0.423	<2.00
BKG-1 4ft	06/12/2023	4.0 Ft	7.22	0.737	2.21	0.459
BKG-2 4ft	06/12/2023	4.0 Ft	8.69	2.10	2.93	0.739
BKG-3 4ft	06/12/2023	4.0 Ft	8.55	0.372	1.86	0.957
BKG-4 4ft	06/12/2023	4.0 Ft	7.79	0.261	1.28	0.176
BKG-5 4ft	06/12/2023	4.0 Ft	7.66	1.19	2.49	0.207
BKG-1 12ft	06/12/2023	12.0 Ft	8.02	0.723	2.00	0.176
BKG-5 12ft	06/12/2023	12.0 Ft	7.86	1.77	2.39	0.0851
Maximum Background Concentration			8.69	2.10	2.93	0.957

1. **Bold** faced values exceed the ECMC Table 915-1 limit(s), but are within background concentrations.

2. **Bold** faced values exceed the ECMC Table 915-1 limit(s) and native background concentrations.

3. Brown highlighted soil analytical values indicate a regulatory exceedance.

NA - Not analyzed/Not applicable

Material excavated and transported off site for disposal.

TABLE 5
SUMMARY OF METALS IN SOIL CHEMISTRY DATA
NOBLE 100322
FARR C 18-25, WELD COUNTY, COLORADO
REM # 24172

Sample ID	Sample Date	Depth (ft)	Arsenic (mg/kg)	Barium (mg/kg)	Cadmium (mg/kg)	Chromium (VI) (mg/kg)	Copper (mg/kg)	Lead (mg/kg)	Nickel (mg/kg)	Selenium (mg/kg)	Silver (mg/kg)	Zinc (mg/kg)
ECMC Table 915-1 Limits (Residential SSL)			0.68	15000	71	0.3	3100	400	1500	390	390	23000
ECMC Table 915-1 Limits (Protection of Groundwater SSL)			0.29	82	0.38	0.00067	46	14	26	0.26	0.8	370
Backfill	6/25/2024	N/A	3.15	67.9	<0.200	<0.30	6.40	5.70	7.15	<0.260	0.0319	17.9
SEP01 SURF	12/08/2022	0.5ft	NA	NA	NA	NA	NA	NA	NA	NA	NA	NA
FL01 2ft	12/08/2022	2.0 Ft	NA	NA	NA	NA	NA	NA	NA	NA	NA	NA
N01@3.0'	6/25/2024	3.0 Ft	2.06	68.1	<0.200	<0.30	6.92	8.93	6.79	<0.260	0.0713	16.7
S01@3.0'	6/25/2024	3.0 Ft	4.01	88.5	0.214	<0.30	8.65	8.35	10.9	<0.260	0.0628	19.7
E01@3.0'	6/25/2024	3.0 Ft	3.26	80.7	0.287	<0.30	9.44	24.2	9.37	<0.260	0.0408	21.7
W01@3.0'	6/25/2024	3.0 Ft	3.59	80.6	0.238	<0.30	9.35	15.9	11.1	<0.234	0.0724	20.4
B01@4.0'	6/25/2024	4.0 Ft	3.36	78.8	0.307	<0.30	18.2	26.4	18.5	<0.260	0.107	28.2
BKG-1 4ft	06/12/2023	4.0 Ft	1.86	57.9	0.332	<0.30	<0.441	7.22	3.88	<0.287	0.0274	14.7
BKG-2 4ft	06/12/2023	4.0 Ft	2.79	98.3	0.239	<0.30	<0.429	6.86	5.35	<0.279	0.0425	15.8
BKG-3 4ft	06/12/2023	4.0 Ft	2.87	89.5	<0.226	<0.30	<0.453	4.71	4.37	<0.294	<0.0226	12.8
BKG-4 4ft	06/12/2023	4.0 Ft	2.29	69.2	<0.232	<0.30	<0.464	7.27	5.18	<0.302	0.0539	18.9
BKG-5 4ft	06/12/2023	4.0 Ft	2.34	72.1	0.228	<0.30	<0.444	6.43	4.59	<0.289	0.0320	16.1
BKG-1 12ft	06/12/2023	12.0 Ft	3.47	28.9	0.322	<0.30	<0.465	8.05	5.35	<0.302	<0.0233	20.0
BKG-5 12ft	06/12/2023	12.0 Ft	3.54	182	<0.225	<0.30	<0.451	6.66	5.66	<0.293	<0.0225	17.8
1.25x Maximum Background Concentration			4.43	228	0.415	<0.30	<46	10.1	7.08	<0.302	<0.8	25.0

1. **Bold** faced values exceed the ECMC Table 915-1 limit(s), but are within 1.25x background concentrations.
2. **Red** faced values exceed the ECMC Table 915-1 limit(s) and native background concentrations.
3. Red & blue highlighted soil analytical values indicate an exceedance of the referenced soil screening level (SSL).
4. Non-detect background results accounted for in the highest background concentration by using the reporting limit.

ECMC = Energy & Carbon Management Commission

(<) = Analytical result is less than the indicated laboratory reporting limit.

mg/kg = Milligrams per kilogram

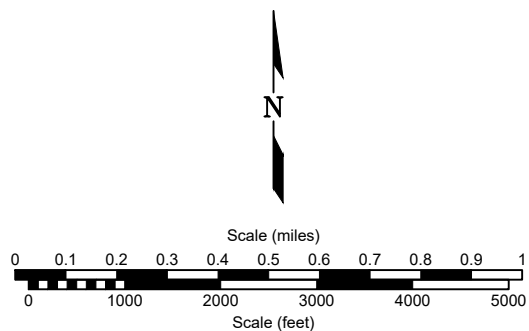
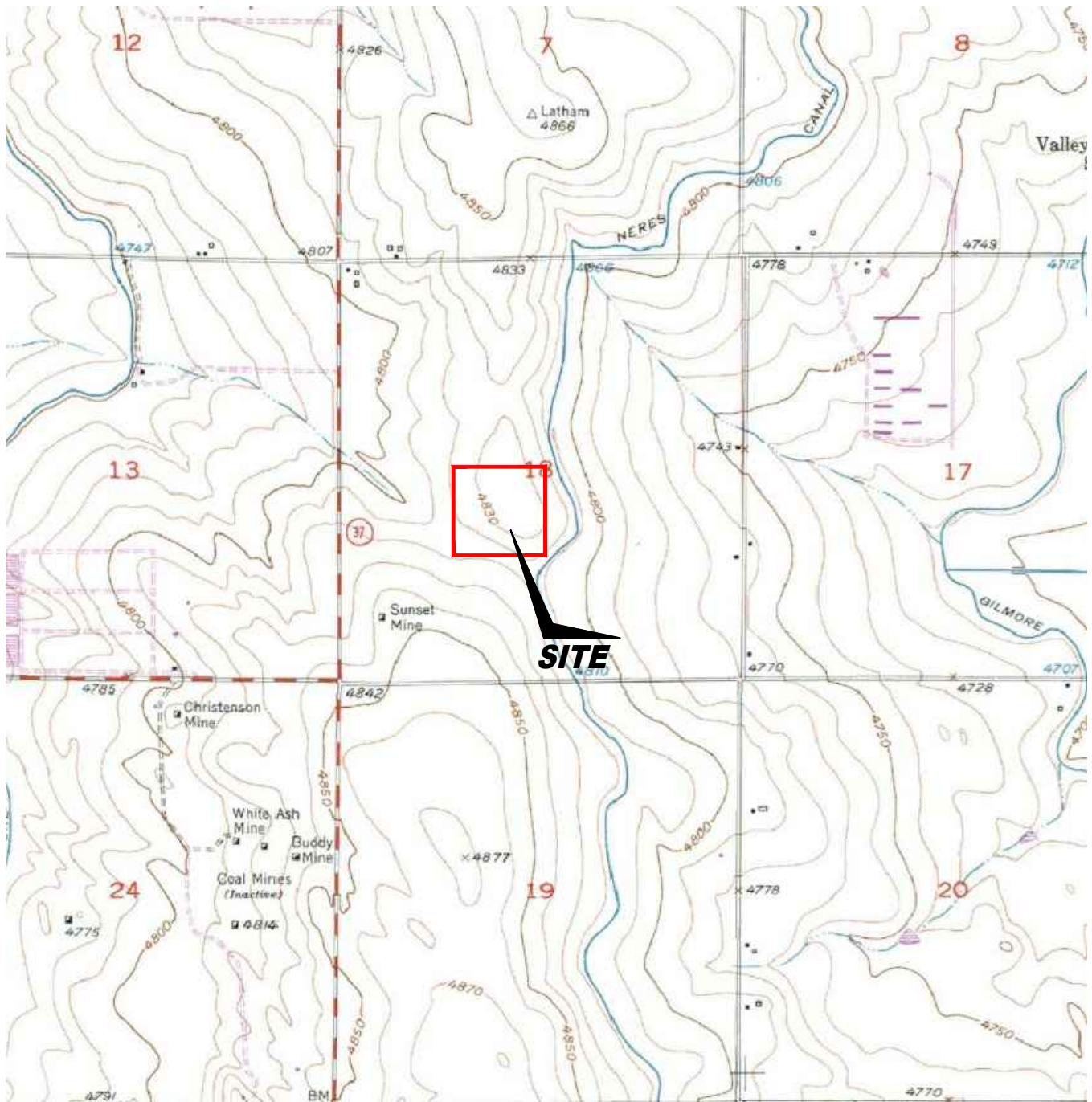
ft. = Feet

bgs = Below ground surface

* Indicates laboratory minimum detection limit in excess of SSL

NA - Not analyzed/Not applicable

Material excavated and transported off site for disposal.



USGS 7.5 MINUTE SERIES (TOPOGRAPHIC)

Figure 1
SITE LOCATION MAP

Noble Energy, Inc. ~ Farr C 18-25
 NESW Sec. 18, T4N, R64W, 6th PM
 Weld County, Colorado
 40.308718°, -104.597412°

Project # C022-201	API # 05-123-23727	Facility # 283986
Date 9/10/24	Remediation # 24172	Filename 22201TFL





LEGEND

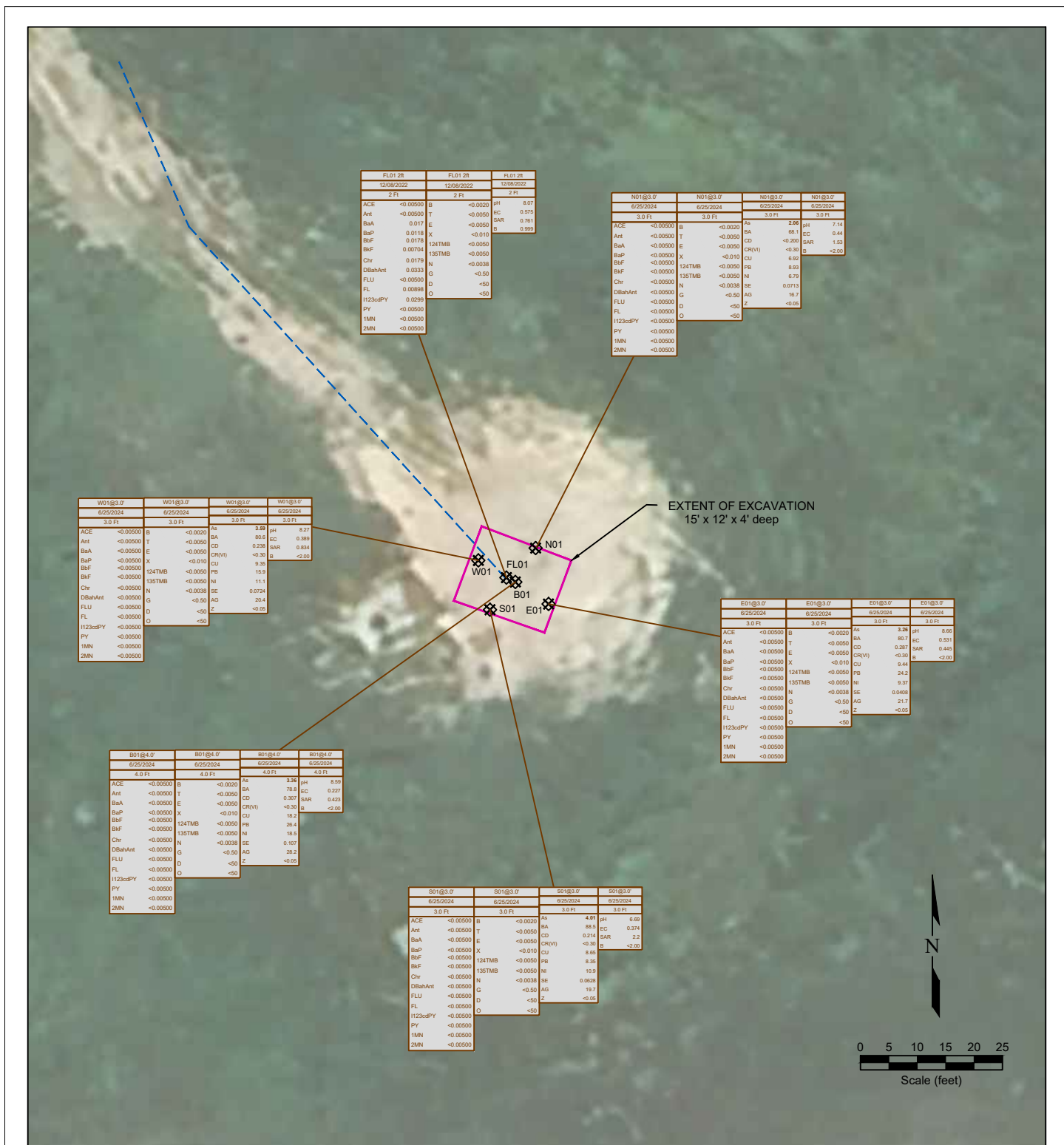
● WELL HEAD LOCATION ▲ PID READING LOCATION FORMER FORMER FACILITY - - - - - FORMER FLOW LINE
 EXTENT OF EXCAVATION

**Figure 2
SITE MAP**

Noble Energy, Inc. ~ Farr C 18-25
 NESW Sec. 18, T4N, R64W, 6th PM
 Weld County, Colorado
 40.308718°, -104.597412°

Project No. C022-201	API # 05-123-23727	Facility # 283986
Date 9/10/24	Remediation # 24172	Filename 22201QFL





LEGEND			
● WELL HEAD LOCATION	⊗ SOIL SAMPLE LOCATION	FORMER FACILITY	FORMER FLOW LINE
		EXTENT OF EXCAVATION	
NOT ANALYZED			
SAMPLE ID	SAMPLE ID	SAMPLE ID	SAMPLE ID
DATE	DATE	DATE	DATE
DEPTH	DEPTH	DEPTH	DEPTH
ACE	ACE	ACE	ACE
Ant	Ant	Ant	Ant
BaA	BaA	BaA	BaA
BaP	BaP	BaP	BaP
BbF	BbF	BbF	BbF
BkF	BkF	BkF	BkF
Chr	Chr	Chr	Chr
DBahAnt	DBahAnt	DBahAnt	DBahAnt
FLU	FLU	FLU	FLU
H123cdPY	H123cdPY	H123cdPY	H123cdPY
MN	MN	MN	MN
2MN	2MN	2MN	2MN
ACE	ACE	ACE	ACE
Ant	Ant	Ant	Ant
BaA	BaA	BaA	BaA
BaP	BaP	BaP	BaP
BbF	BbF	BbF	BbF
BkF	BkF	BkF	BkF
Chr	Chr	Chr	Chr
DBahAnt	DBahAnt	DBahAnt	DBahAnt
FLU	FLU	FLU	FLU
H123cdPY	H123cdPY	H123cdPY	H123cdPY
MN	MN	MN	MN
2MN	2MN	2MN	2MN
ACE	ACE	ACE	ACE
Ant	Ant	Ant	Ant
BaA	BaA	BaA	BaA
BaP	BaP	BaP	BaP
BbF	BbF	BbF	BbF
BkF	BkF	BkF	BkF
Chr	Chr	Chr	Chr
DBahAnt	DBahAnt	DBahAnt	DBahAnt
FLU	FLU	FLU	FLU
H123cdPY	H123cdPY	H123cdPY	H123cdPY
MN	MN	MN	MN
2MN	2MN	2MN	2MN
ACE	ACE	ACE	ACE
Ant	Ant	Ant	Ant
BaA	BaA	BaA	BaA
BaP	BaP	BaP	BaP
BbF	BbF	BbF	BbF
BkF	BkF	BkF	BkF
Chr	Chr	Chr	Chr
DBahAnt	DBahAnt	DBahAnt	DBahAnt
FLU	FLU	FLU	FLU
H123cdPY	H123cdPY	H123cdPY	H123cdPY
MN	MN	MN	MN
2MN	2MN	2MN	2MN

Figure 3

SOIL CHEMISTRY MAP

Noble Energy, Inc. ~ Farr C 18-25
NESW Sec. 18, T4N, R64W, 6th PM
Weld County, Colorado
40.308718°N, -104.597412°W

Project No. C022-201	API # 05-123-23727	Facility # 283986	
Date 9/10/24	Remediation # 24172	Filename 22201QFL	



Figure 4
BACKGROUND SAMPLE SOIL CHEMISTRY MAP

Noble Energy, Inc. ~ Farr C 18-25
NESW Sec. 18, T4N, R64W, 6th PM
Weld County, Colorado
40.308718° -104.597412°

Project No. C022-201	API # 05-123-23727	Facility # 283986
Date 9/10/24	Remediation # 24172	Filename 22201QFLBKG



SAMPLE ID	DATE	DEPTH (ft)	SAMPLE ID	DATE	DEPTH (ft)	SAMPLE ID	DATE	DEPTH (ft)	SAMPLE ID	DATE	DEPTH (ft)
ACE	<0.0050	ACE	<0.0050	B	<0.0020	B	<0.0020	BA	7.78	pH	7.88
Ant	<0.0050	Ant	<0.0050	T	<0.0050	T	<0.0050	BA	7.78	EC	1.77
BaA	<0.0050	BaA	<0.0050	E	<0.0050	E	<0.0050	BA	7.78	EC	1.77
BaP	<0.0050	BaP	<0.0050	X	<0.010	X	<0.010	BA	7.78	EC	1.77
BaF	<0.0050	BaF	<0.0050	124TMB	<0.0050	124TMB	<0.0050	BA	7.78	EC	1.77
BaF	<0.0050	BaF	<0.0050	135TMB	<0.0050	135TMB	<0.0050	BA	7.78	EC	1.77
Chr	<0.0050	Chr	<0.0050	N	<0.0038	N	<0.0038	BA	7.78	EC	1.77
DBaHant	<0.0050	DBaHant	<0.0050	G	<0.50	G	<0.50	BA	7.78	EC	1.77
FLU	<0.0050	FLU	<0.0050	D	<50	D	<50	BA	7.78	EC	1.77
FL	<0.0050	FL	<0.0050	O	<50	O	<50	BA	7.78	EC	1.77
1123cdPY	<0.0050	1123cdPY	<0.0050	PY	<0.0050	PY	<0.0050	BA	7.78	EC	1.77
1MN	<0.0050	1MN	<0.0050	2MN	<0.0050	2MN	<0.0050	BA	7.78	EC	1.77
2MN	<0.0050	2MN	<0.0050					BA	7.78	EC	1.77

Photo Log



Description:

--

Photo Log



Description:

--

Photo Log



Description:

--

Photo Log



Description:

--

Photo Log



Description:

--

Photo Log



Description:

--