

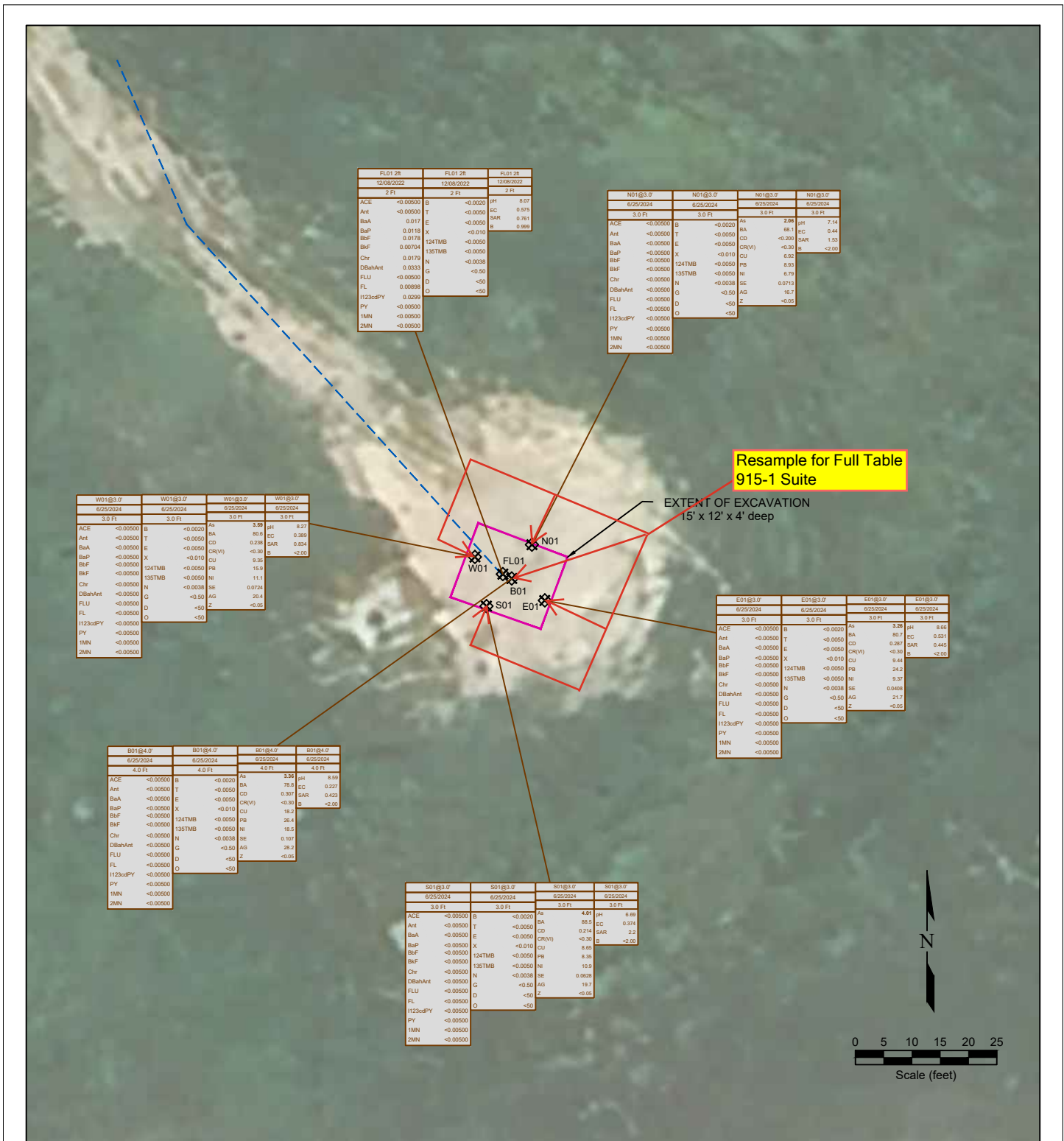
LEGEND	
	WELL HEAD LOCATION
	PID READING LOCATION
	ABOVE GROUND STORAGE TANK
	FORMER FACILITY
	FLOWLINE
	FENCE LINE
	SAMPLE IDENTIFICATION AND DEPTH (ft)
	PID READING PPM (parts per million)
	CONTAINMENT BERM
	CONTAINMENT WALL

Figure 1
PROPOSED SITE INVESTIGATION PLAN
NOBLE ENERGY INC ~ FARR C 18-25

NESW Sec. 18, T4N, R64W, 6th PM
Weld County, Colorado
40.308680°, -104.597450°

Project No. C022-201	API # 05-123-23727	Facility #
Date 7/9/25	Remediation # 24172	Filename 22201Q





LEGEND			
● WELL HEAD LOCATION	⊗ SOIL SAMPLE LOCATION	FORMER FACILITY	FORMER FLOW LINE
		EXTENT OF EXCAVATION	
NOT ANALYZED			
SAMPLE ID	SAMPLE ID	SAMPLE ID	SAMPLE ID
DATE	DATE	DATE	DATE
DEPTH	DEPTH	DEPTH	DEPTH
ACE	ACE	ACE	ACE
Ant	Ant	Ant	Ant
BaA	BaA	BaA	BaA
BaP	BaP	BaP	BaP
BaF	BaF	BaF	BaF
Chr	Chr	Chr	Chr
DBaAnt	DBaAnt	DBaAnt	DBaAnt
FLU	FLU	FLU	FLU
FL	FL	FL	FL
H23cdPY	H23cdPY	H23cdPY	H23cdPY
PY	PY	PY	PY
1MN	1MN	1MN	1MN
2MN	2MN	2MN	2MN
1,2,3-CD	1,2,3-CD	1,2,3-CD	1,2,3-CD
1,2,4-TH	1,2,4-TH	1,2,4-TH	1,2,4-TH
1,2,5-TH	1,2,5-TH	1,2,5-TH	1,2,5-TH
1,2,6-TH	1,2,6-TH	1,2,6-TH	1,2,6-TH
1,2,7-TH	1,2,7-TH	1,2,7-TH	1,2,7-TH
1,2,8-TH	1,2,8-TH	1,2,8-TH	1,2,8-TH
1,2,9-TH	1,2,9-TH	1,2,9-TH	1,2,9-TH
1,2,10-TH	1,2,10-TH	1,2,10-TH	1,2,10-TH
1,2,11-TH	1,2,11-TH	1,2,11-TH	1,2,11-TH
1,2,12-TH	1,2,12-TH	1,2,12-TH	1,2,12-TH
1,2,13-TH	1,2,13-TH	1,2,13-TH	1,2,13-TH
1,2,14-TH	1,2,14-TH	1,2,14-TH	1,2,14-TH
1,2,15-TH	1,2,15-TH	1,2,15-TH	1,2,15-TH
1,2,16-TH	1,2,16-TH	1,2,16-TH	1,2,16-TH
1,2,17-TH	1,2,17-TH	1,2,17-TH	1,2,17-TH
1,2,18-TH	1,2,18-TH	1,2,18-TH	1,2,18-TH
1,2,19-TH	1,2,19-TH	1,2,19-TH	1,2,19-TH
1,2,20-TH	1,2,20-TH	1,2,20-TH	1,2,20-TH
1,2,21-TH	1,2,21-TH	1,2,21-TH	1,2,21-TH
1,2,22-TH	1,2,22-TH	1,2,22-TH	1,2,22-TH
1,2,23-TH	1,2,23-TH	1,2,23-TH	1,2,23-TH
1,2,24-TH	1,2,24-TH	1,2,24-TH	1,2,24-TH
1,2,25-TH	1,2,25-TH	1,2,25-TH	1,2,25-TH
1,2,26-TH	1,2,26-TH	1,2,26-TH	1,2,26-TH
1,2,27-TH	1,2,27-TH	1,2,27-TH	1,2,27-TH
1,2,28-TH	1,2,28-TH	1,2,28-TH	1,2,28-TH
1,2,29-TH	1,2,29-TH	1,2,29-TH	1,2,29-TH
1,2,30-TH	1,2,30-TH	1,2,30-TH	1,2,30-TH
1,2,31-TH	1,2,31-TH	1,2,31-TH	1,2,31-TH
1,2,32-TH	1,2,32-TH	1,2,32-TH	1,2,32-TH
1,2,33-TH	1,2,33-TH	1,2,33-TH	1,2,33-TH
1,2,34-TH	1,2,34-TH	1,2,34-TH	1,2,34-TH
1,2,35-TH	1,2,35-TH	1,2,35-TH	1,2,35-TH
1,2,36-TH	1,2,36-TH	1,2,36-TH	1,2,36-TH
1,2,37-TH	1,2,37-TH	1,2,37-TH	1,2,37-TH
1,2,38-TH	1,2,38-TH	1,2,38-TH	1,2,38-TH
1,2,39-TH	1,2,39-TH	1,2,39-TH	1,2,39-TH
1,2,40-TH	1,2,40-TH	1,2,40-TH	1,2,40-TH
1,2,41-TH	1,2,41-TH	1,2,41-TH	1,2,41-TH
1,2,42-TH	1,2,42-TH	1,2,42-TH	1,2,42-TH
1,2,43-TH	1,2,43-TH	1,2,43-TH	1,2,43-TH
1,2,44-TH	1,2,44-TH	1,2,44-TH	1,2,44-TH
1,2,45-TH	1,2,45-TH	1,2,45-TH	1,2,45-TH
1,2,46-TH	1,2,46-TH	1,2,46-TH	1,2,46-TH
1,2,47-TH	1,2,47-TH	1,2,47-TH	1,2,47-TH
1,2,48-TH	1,2,48-TH	1,2,48-TH	1,2,48-TH
1,2,49-TH	1,2,49-TH	1,2,49-TH	1,2,49-TH
1,2,50-TH	1,2,50-TH	1,2,50-TH	1,2,50-TH
1,2,51-TH	1,2,51-TH	1,2,51-TH	1,2,51-TH
1,2,52-TH	1,2,52-TH	1,2,52-TH	1,2,52-TH
1,2,53-TH	1,2,53-TH	1,2,53-TH	1,2,53-TH
1,2,54-TH	1,2,54-TH	1,2,54-TH	1,2,54-TH
1,2,55-TH	1,2,55-TH	1,2,55-TH	1,2,55-TH
1,2,56-TH	1,2,56-TH	1,2,56-TH	1,2,56-TH
1,2,57-TH	1,2,57-TH	1,2,57-TH	1,2,57-TH
1,2,58-TH	1,2,58-TH	1,2,58-TH	1,2,58-TH
1,2,59-TH	1,2,59-TH	1,2,59-TH	1,2,59-TH
1,2,60-TH	1,2,60-TH	1,2,60-TH	1,2,60-TH
1,2,61-TH	1,2,61-TH	1,2,61-TH	1,2,61-TH
1,2,62-TH	1,2,62-TH	1,2,62-TH	1,2,62-TH
1,2,63-TH	1,2,63-TH	1,2,63-TH	1,2,63-TH
1,2,64-TH	1,2,64-TH	1,2,64-TH	1,2,64-TH
1,2,65-TH	1,2,65-TH	1,2,65-TH	1,2,65-TH
1,2,66-TH	1,2,66-TH	1,2,66-TH	1,2,66-TH
1,2,67-TH	1,2,67-TH	1,2,67-TH	1,2,67-TH
1,2,68-TH	1,2,68-TH	1,2,68-TH	1,2,68-TH
1,2,69-TH	1,2,69-TH	1,2,69-TH	1,2,69-TH
1,2,70-TH	1,2,70-TH	1,2,70-TH	1,2,70-TH
1,2,71-TH	1,2,71-TH	1,2,71-TH	1,2,71-TH
1,2,72-TH	1,2,72-TH	1,2,72-TH	1,2,72-TH
1,2,73-TH	1,2,73-TH	1,2,73-TH	1,2,73-TH
1,2,74-TH	1,2,74-TH	1,2,74-TH	1,2,74-TH
1,2,75-TH	1,2,75-TH	1,2,75-TH	1,2,75-TH
1,2,76-TH	1,2,76-TH	1,2,76-TH	1,2,76-TH
1,2,77-TH	1,2,77-TH	1,2,77-TH	1,2,77-TH
1,2,78-TH	1,2,78-TH	1,2,78-TH	1,2,78-TH
1,2,79-TH	1,2,79-TH	1,2,79-TH	1,2,79-TH
1,2,80-TH	1,2,80-TH	1,2,80-TH	1,2,80-TH
1,2,81-TH	1,2,81-TH	1,2,81-TH	1,2,81-TH
1,2,82-TH	1,2,82-TH	1,2,82-TH	1,2,82-TH
1,2,83-TH	1,2,83-TH	1,2,83-TH	1,2,83-TH
1,2,84-TH	1,2,84-TH	1,2,84-TH	1,2,84-TH
1,2,85-TH	1,2,85-TH	1,2,85-TH	1,2,85-TH
1,2,86-TH	1,2,86-TH	1,2,86-TH	1,2,86-TH
1,2,87-TH	1,2,87-TH	1,2,87-TH	1,2,87-TH
1,2,88-TH	1,2,88-TH	1,2,88-TH	1,2,88-TH
1,2,89-TH	1,2,89-TH	1,2,89-TH	1,2,89-TH
1,2,90-TH	1,2,90-TH	1,2,90-TH	1,2,90-TH
1,2,91-TH	1,2,91-TH	1,2,91-TH	1,2,91-TH
1,2,92-TH	1,2,92-TH	1,2,92-TH	1,2,92-TH
1,2,93-TH	1,2,93-TH	1,2,93-TH	1,2,93-TH
1,2,94-TH	1,2,94-TH	1,2,94-TH	1,2,94-TH
1,2,95-TH	1,2,95-TH	1,2,95-TH	1,2,95-TH
1,2,96-TH	1,2,96-TH	1,2,96-TH	1,2,96-TH
1,2,97-TH	1,2,97-TH	1,2,97-TH	1,2,97-TH
1,2,98-TH	1,2,98-TH	1,2,98-TH	1,2,98-TH
1,2,99-TH	1,2,99-TH	1,2,99-TH	1,2,99-TH
1,2,100-TH	1,2,100-TH	1,2,100-TH	1,2,100-TH

Figure 2

PROPOSED SITE INVESTIGATION PLAN

Noble Energy, Inc. ~ Farr C 18-25 NESW
Sec. 18, T4N, R64W, 6th PM
Weld County, Colorado
40.308718°, -104.597412°

Project No. C022-201	API # 05-123-23727	Facility # 283986
Date 9/10/24	Remediation # 24172	Filename 22201QFL



Figure 3
PROPOSED ADDITIONAL BACKGROUND SAMPLE LOCATIONS

Noble Energy, Inc. ~ Farr C 18-25
NESW Sec. 18, T4N, R64W, 6th PM
Weld County, Colorado
40.308718° -104.597412°

Project No. C022-201	API # 05-123-23727	Facility # 283986
Date 9/10/24	Remediation # 24172	Filename 22201QFLBKG

