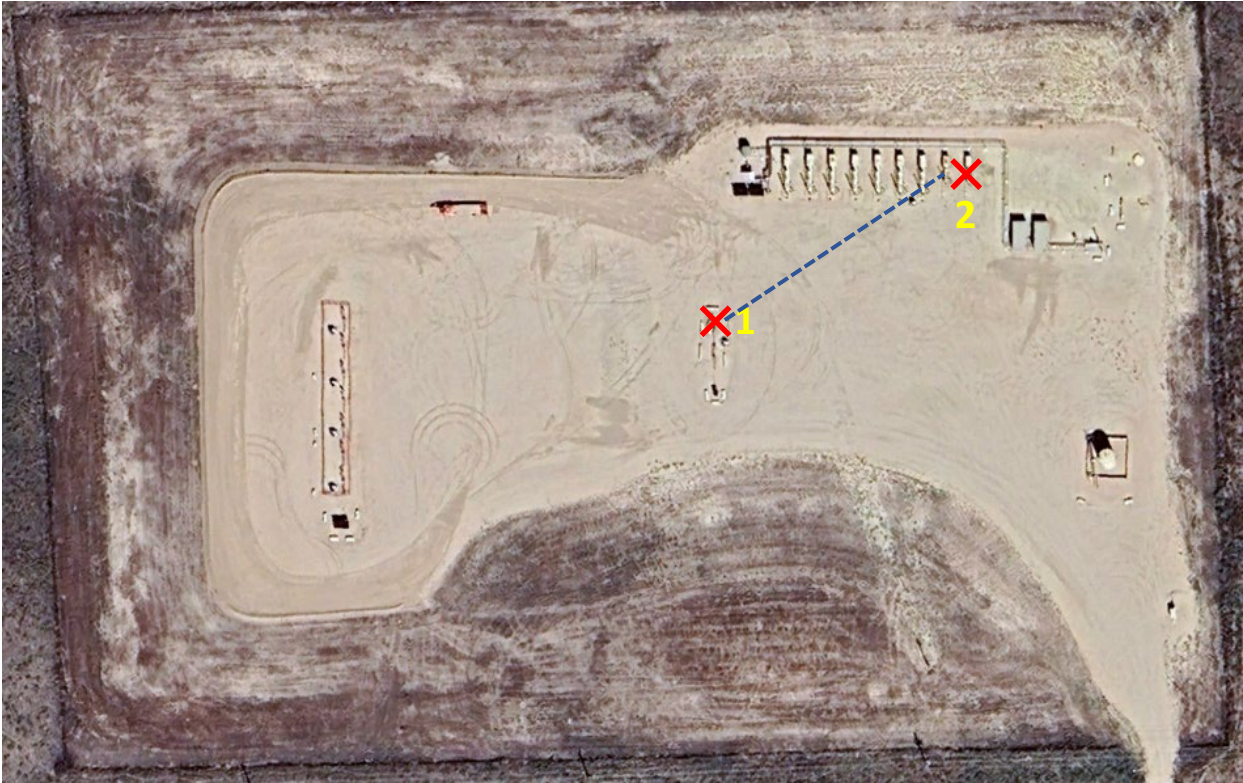


STATE ANTELOPE 34-12-1XRLNB (05-123-36597): Wellhead Cut/Cap and Equipment Removal

40.409110, -104.268810
SWSE Sec. 12 T5N, R62W, 6th PM
Weld County, Colorado
Bonanza Creek Energy (8960)



Equipment to be Removed		
Legend	Equipment On-Site	# Pieces of Equipment
1	STATE ANTELOPE 34-12-1XRLNB (05-123-36597) 40.409110, -104.268810	1
2	Separator	1

Legend
Site Investigation Points

✕

 Visual Inspection and Soil Sample
 On-Location Flowline Corridor

STATE ANTELOPE 34-12-1XRLNB (05-123-36597): ¼ Mile Buffer - Wildlife and Hydrology Map

40.409110, -104.268810
SWSE Sec. 12 T5N, R62W, 6th PM
Weld County, Colorado
Bonanza Creek Energy (8960)

NO WATER WELLS WITHIN ¼ MILE
NO HPH WITHIN ¼ MILE

Legend

Well (API Spot)

