

DUAL INDUCTION

MIDWEST WIRELINE

Company BNL Enterprise		Company BNL Enterprise	
Well	State #9	Well	State #9
Field		Field	
County	Las Animas	County	Las Animas
State	Colorado	State	Colorado
Location: API #: 05-071-09923		Other Services	
SEC 9 TWP 30S RGE 54W		SWNCDL	
Permanent Datum	Ground Level	Elevation	5402
Log Measured From	Kelly Bushing	K.B.	5406
Drilling Measured From	Kelly Bushing	D.F.	
		G.L.	5402
Date	6/1/2025		
Run Number	One		
Depth Driller	1225		
Depth Logger	1225		
Bottom Logged Interval	1223		
Top Log Interval	0		
Casing Driller	7 @ 1143		
Casing Logger	1143		
Bit Size	6.125		
Type Fluid in Hole	Air		
Salinity, ppm CL			
Density / Viscosity			
pH / Fluid Loss			
Source of Sample	Flowline		
Rm @ Meas. Temp	@		
Rmf @ Meas. Temp	@		
Rmc @ Meas. Temp	@		
Source of Rmf / Rmc	Charts		
Rm @ BHT	@		
Operating Rig Time	2 Hours		
Max Rec. Temp. F			
Equipment Number	110		
Location	Hays, KS		
Recorded By	D. Schmidt		
Witnessed By	Peter Kondrat		

<<< Fold Here >>>

All interpretations are opinions based on inferences from electrical or other measurements and Midwest Wireline LLC cannot and does not guarantee the accuracy or correctness of any interpretation, and Midwest Wireline LLC will not be liable or responsible for any loss, costs, damages, or expenses incurred or sustained by anyone resulting from any interpretation made by any of our officers, agents or employees.

Comments

N/A DENOTES NOT AVAILABLE OR NON-APPLICABLE.

Kim, Co
West to Rd 179,
11.3 North, 3.5 East, North to Farmhouse,
4 North

Log Measured From: Kelly Bushing 4 Ft. Above Permanent Datum

THANK YOU FOR USING MIDWEST WIRELINE LLC
785-625-3858

Your Midwest Wireline Crew

Engineer: D. Schmidt
Operator:
Operator:
Operator:

This Log Record Was Witnessed By

Primary Witness: Peter Kondrat
Secondary Witness:
Secondary Witness:
Secondary Witness:

Log Variables

DatabaseC:\ProgramData\Warrior\Data\bnl_state #9.db
Dataset field/well/rag/pass2.1/_vars_

Top - Bottom

AIR_HOLE?	BOREID	BOTTEMP	CASEOD	CASETHCK	FLUIDDEN	MATRXDEN	MudWgt
Yes	in	degF	in	in	g/cc	g/cc	lb/gal
	6.125	100	0	0	0	2.68	0
NPORSEL	PERFS	SNDERR	SNDERRM	SPSHIFT	SRFTEMP	SZCOR	TDEPTH
Sandstone	No	mmho/m	mmho/m	mV	degF	Off	ft
		0	0	0	85		1225

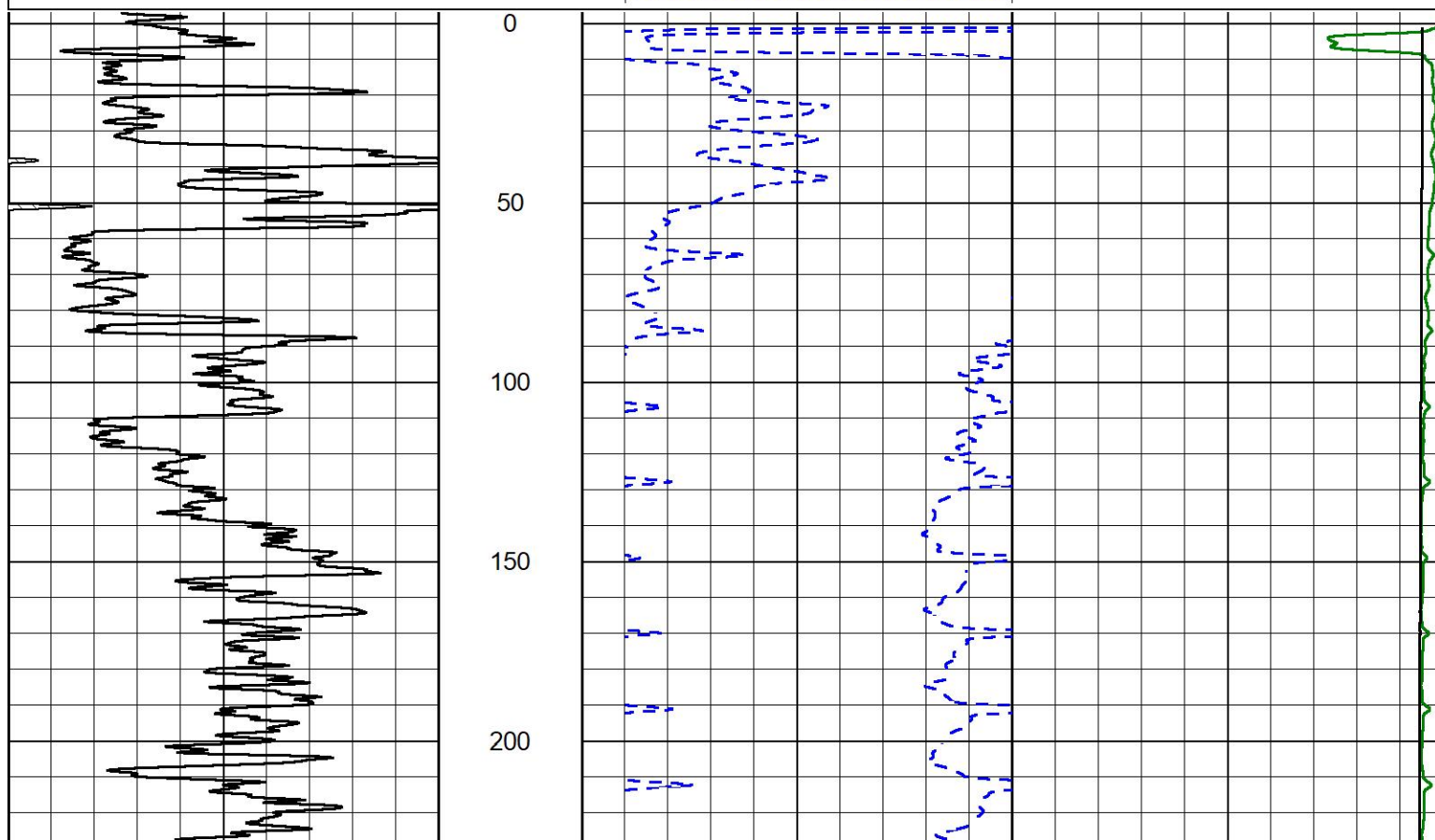


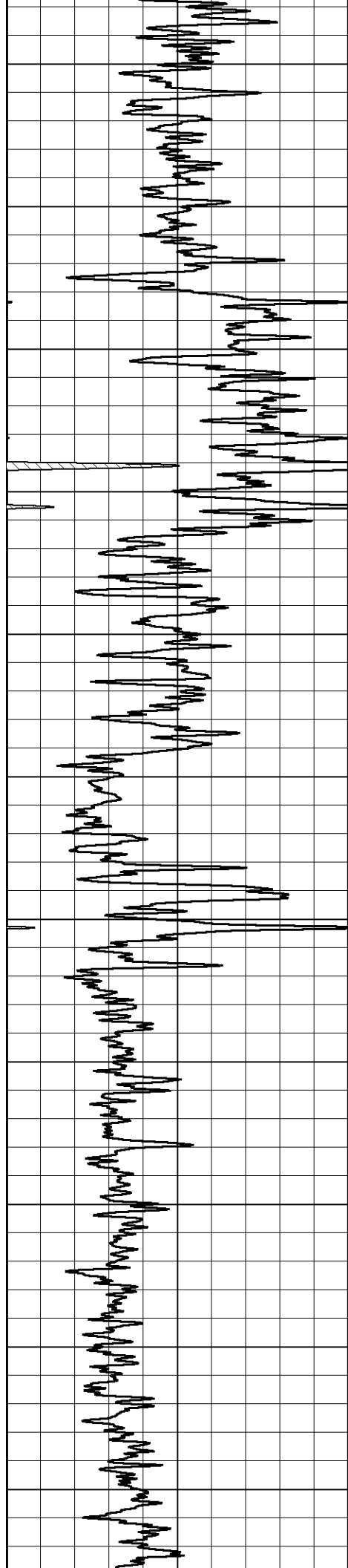
2" SCALE RESISTIVITY

MAIN PASS

Database File bnl_state #9.db
Dataset Pathname Dil/pass2.2
Presentation Format _dil2in
Dataset Creation Sun Jun 01 13:24:30 2025
Charted by Depth in Feet scaled 1:600

0	Gamma Ray (GAPI)	150	1000	Conductivity (mmho/m)	0
			15000	Line Tension (lb)	0
			0	Shallow Resistivity (Ohm-m)	50
			0	Deep Resistivity (Ohm-m)	50
				Shallow Resistivity	
			50	(Ohm-m)	200
			50	Deep Resistivity (Ohm-m)	200





250

300

350

400

450

500

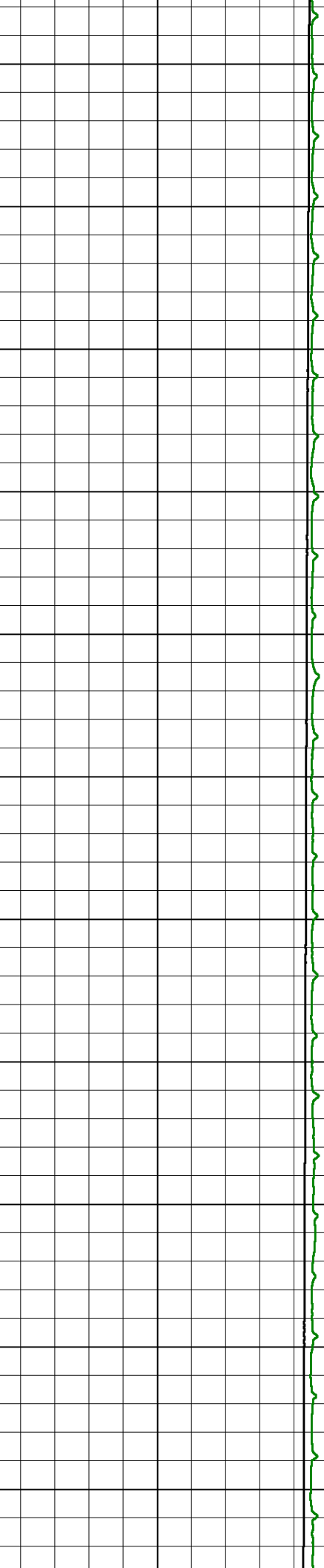
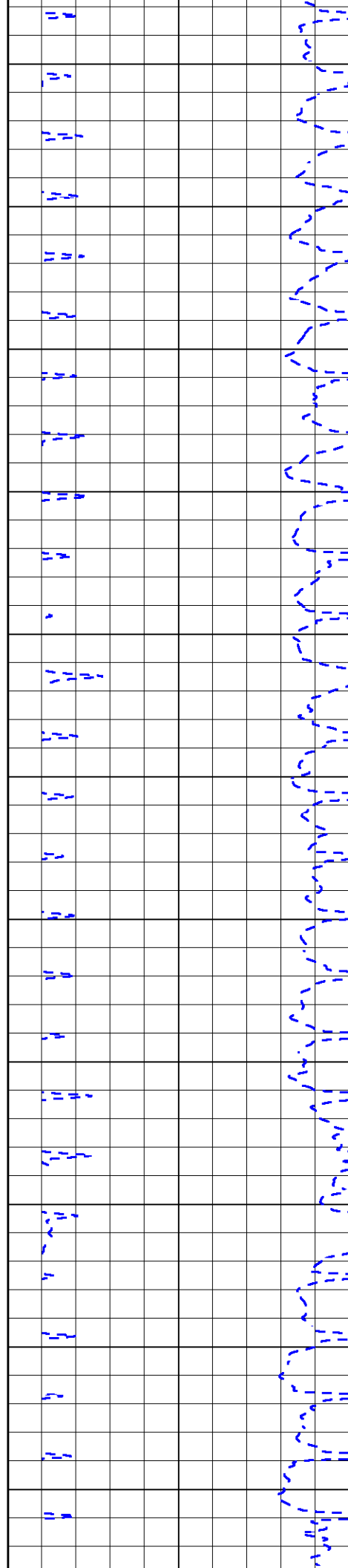
550

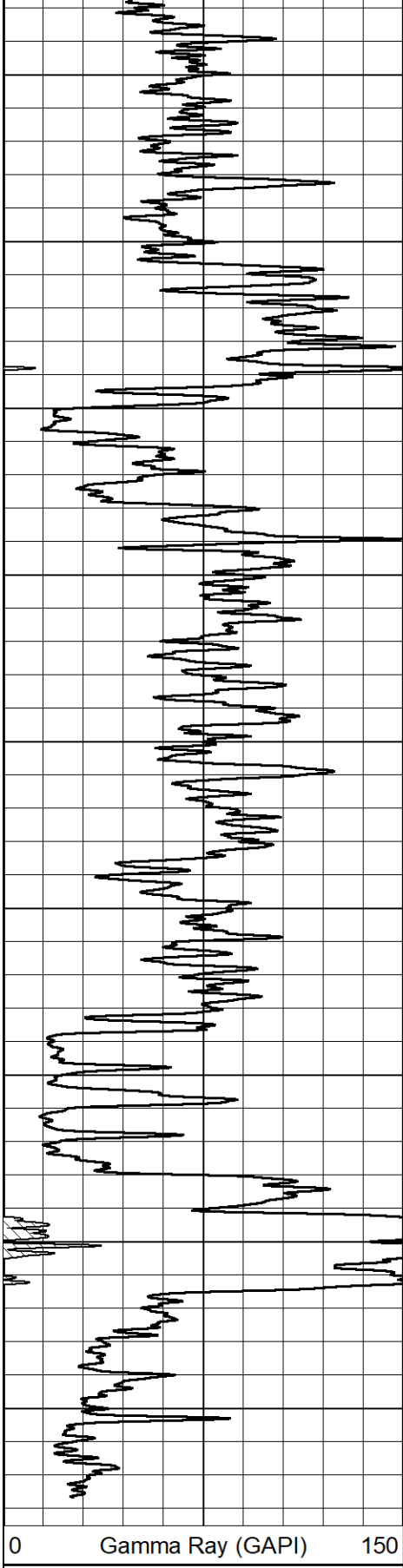
600

650

700

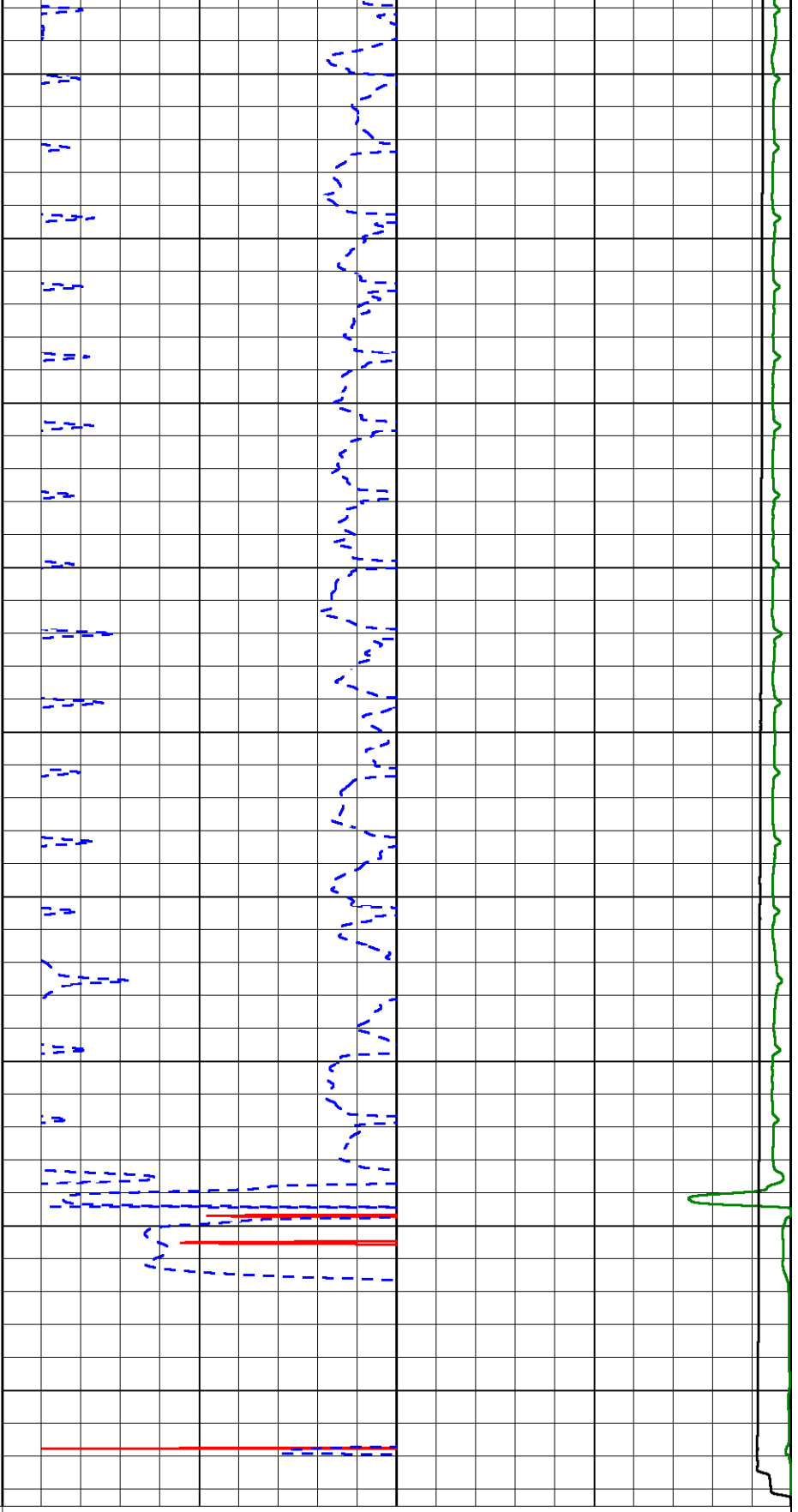
750





0 Gamma Ray (GAPI) 150

800
850
900
950
1000
1050
1100
1150
1200



1000 Conductivity (mmho/m) 0

15000 Line Tension (lb) 0

0	Shallow Resistivity (Ohm-m)	50
0	Deep Resistivity (Ohm-m)	50
Shallow Resistivity		
50	(Ohm-m)	200
50	Deep Resistivity (Ohm-m)	200



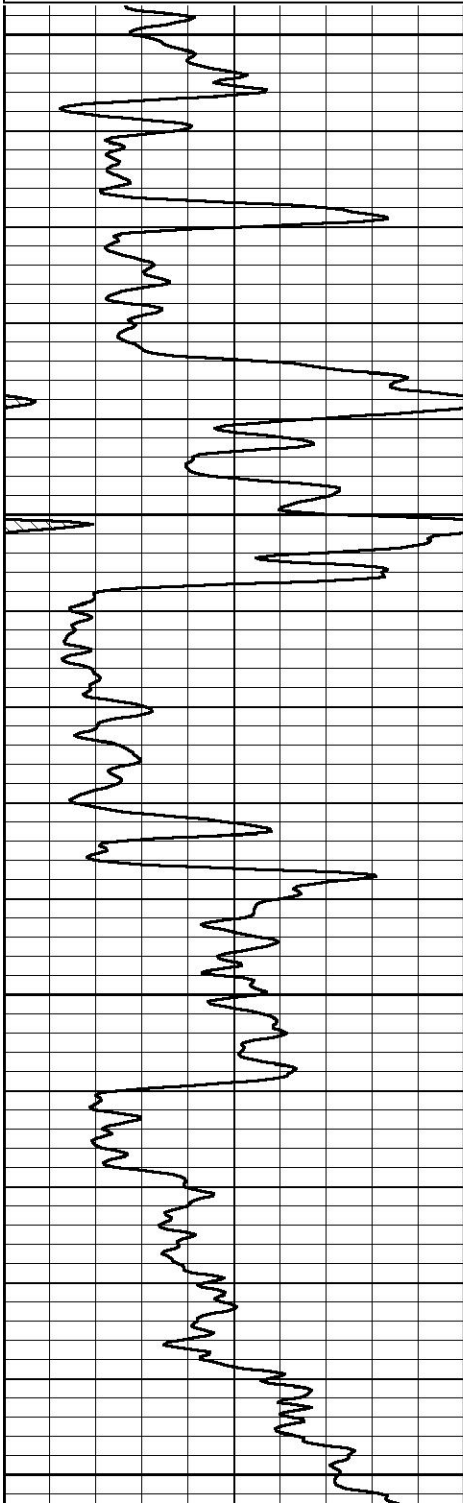
DETAIL SECTION

MAIN PASS

Database File bnl_state #9.db
Dataset Pathname rag/pass2.1
Presentation Format _dil
Dataset Creation Sun Jun 01 12:48:26 2025
Charted by Depth in Feet scaled 1:240

0 Gamma Ray (GAPI) 150

0.2	Deep Resistivity (Ohm-m)	2000
0.2	Medium Resistivity (Ohm-m)	2000
0.2	RLL3 (Ohm-m)	2000
10000	Line Tension (lb)	0

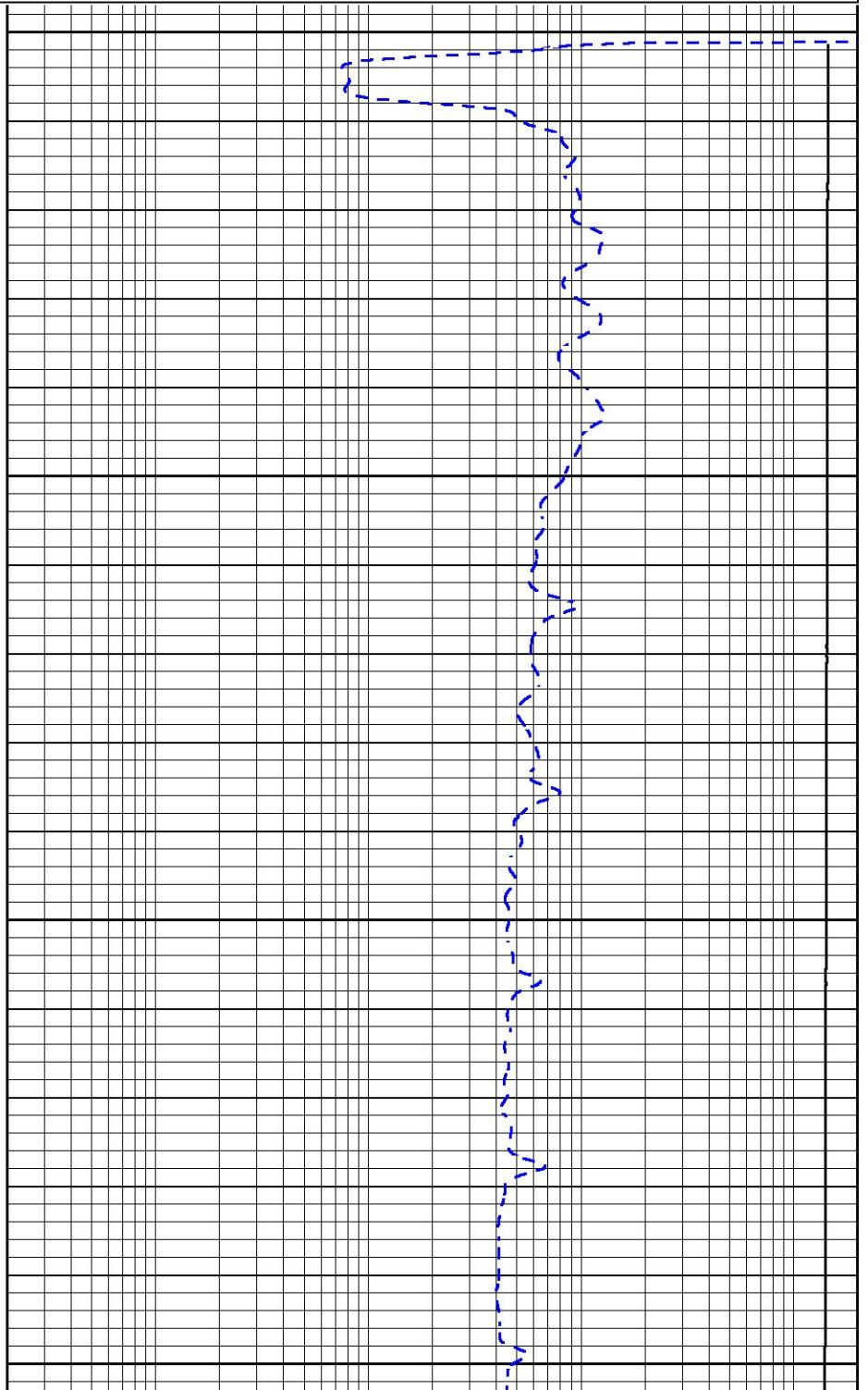


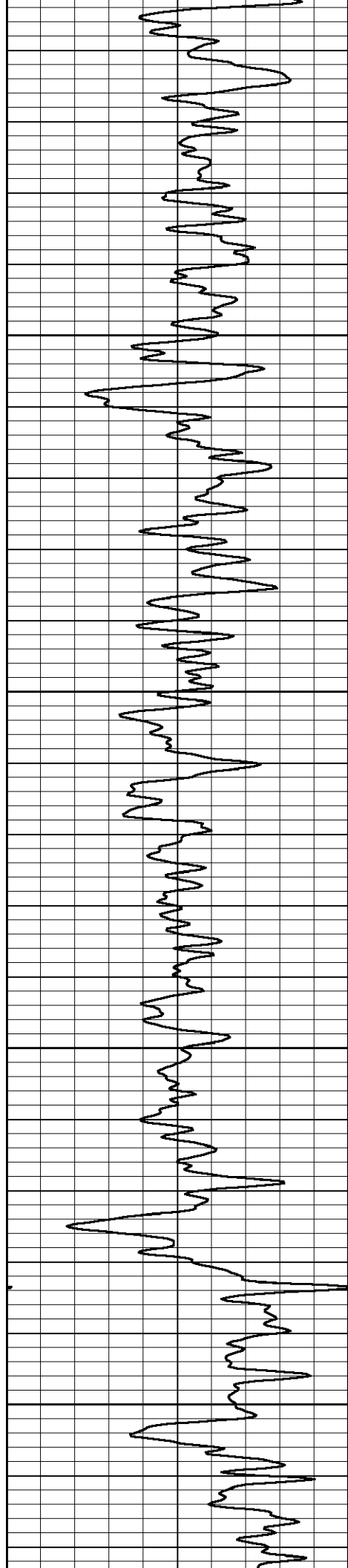
0

50

100

150



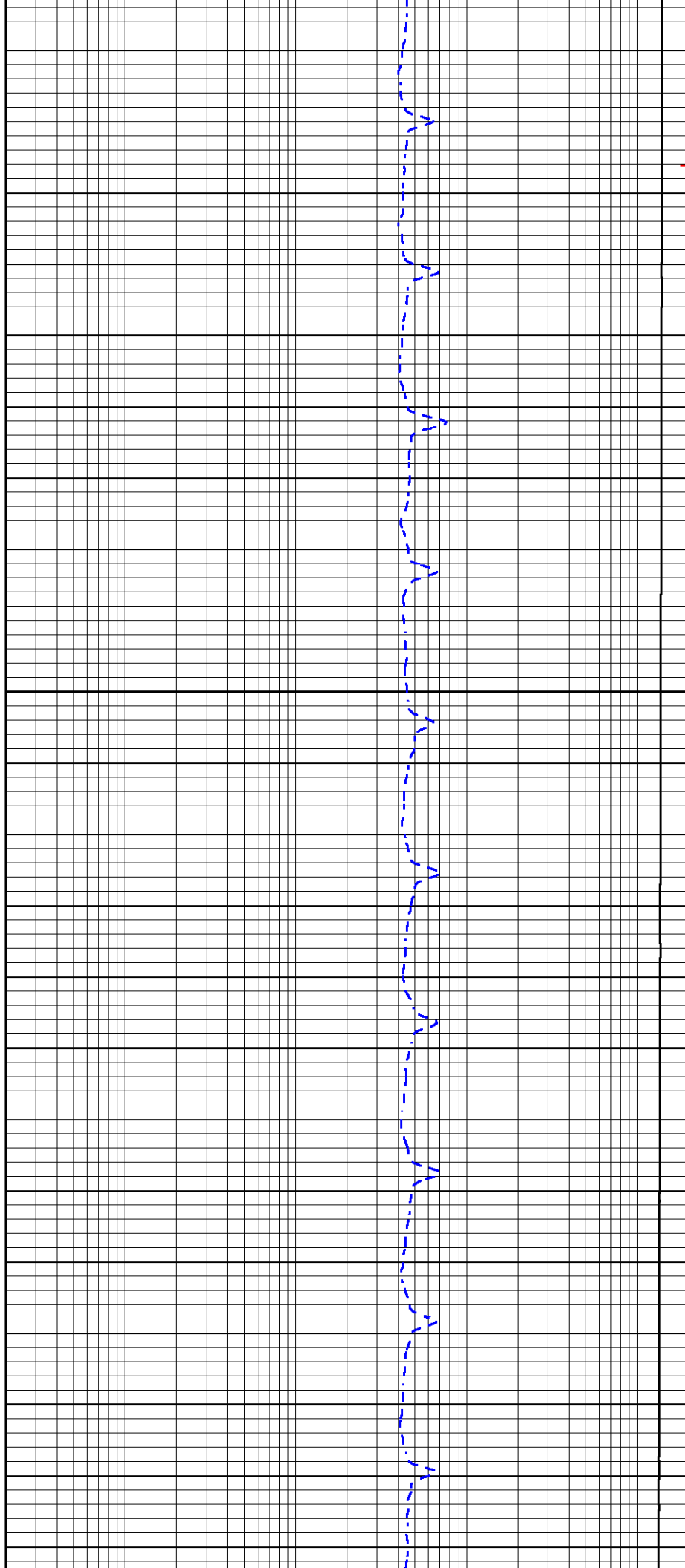


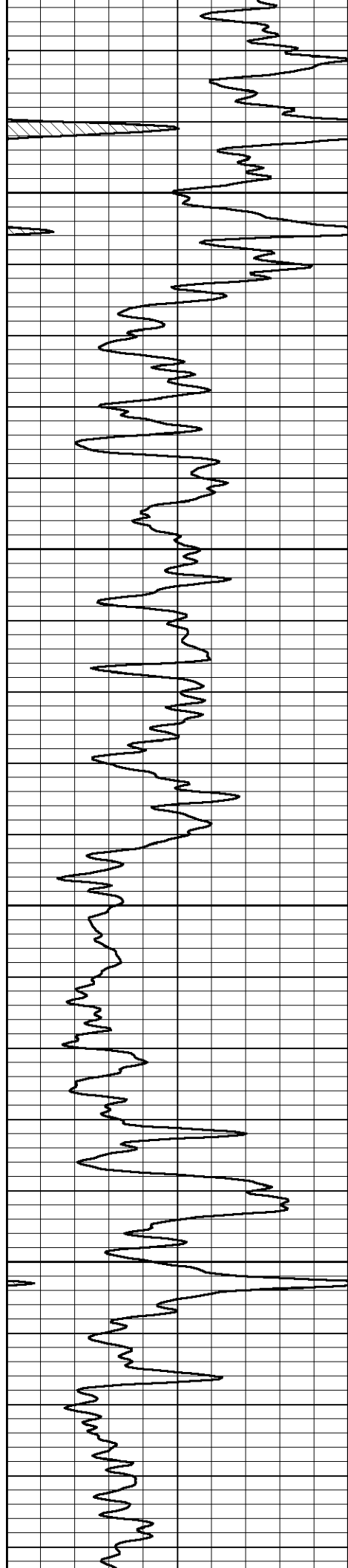
200

250

300

350



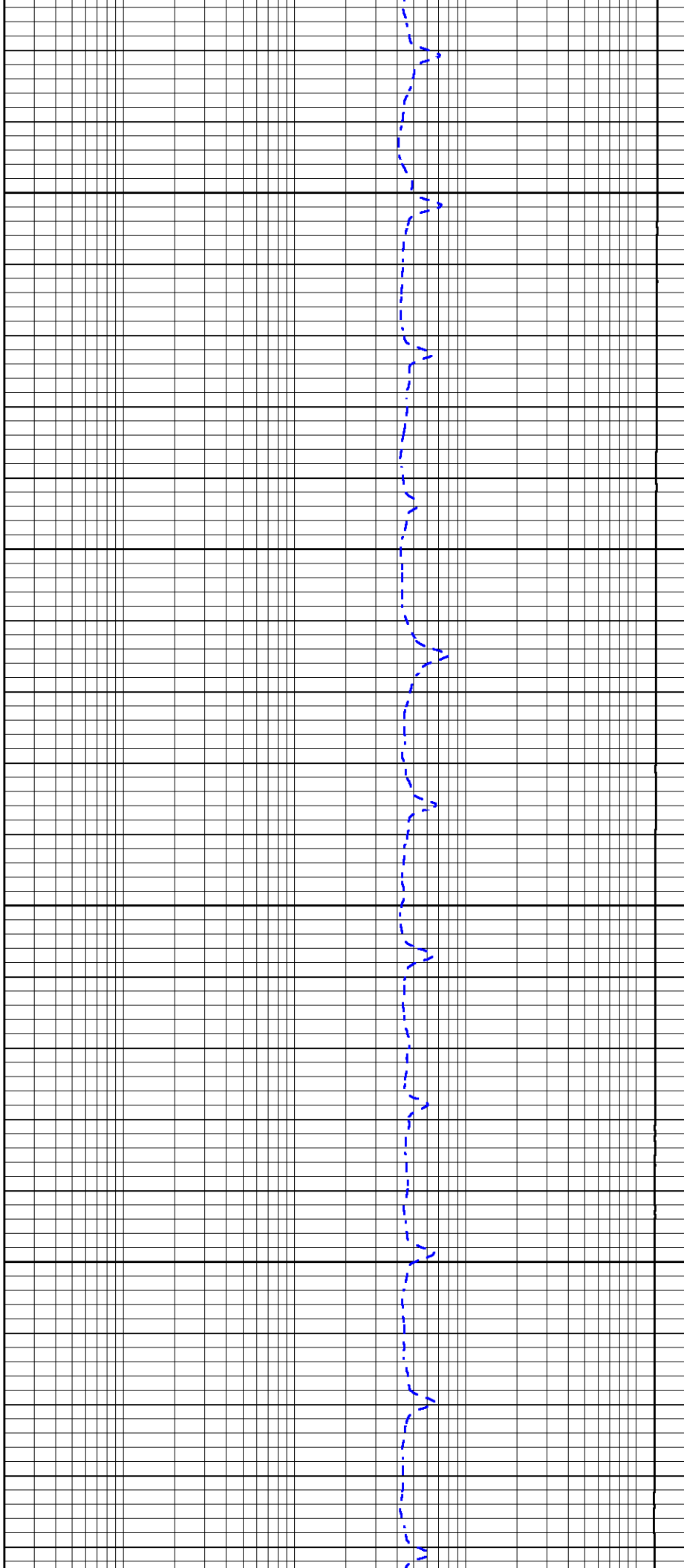


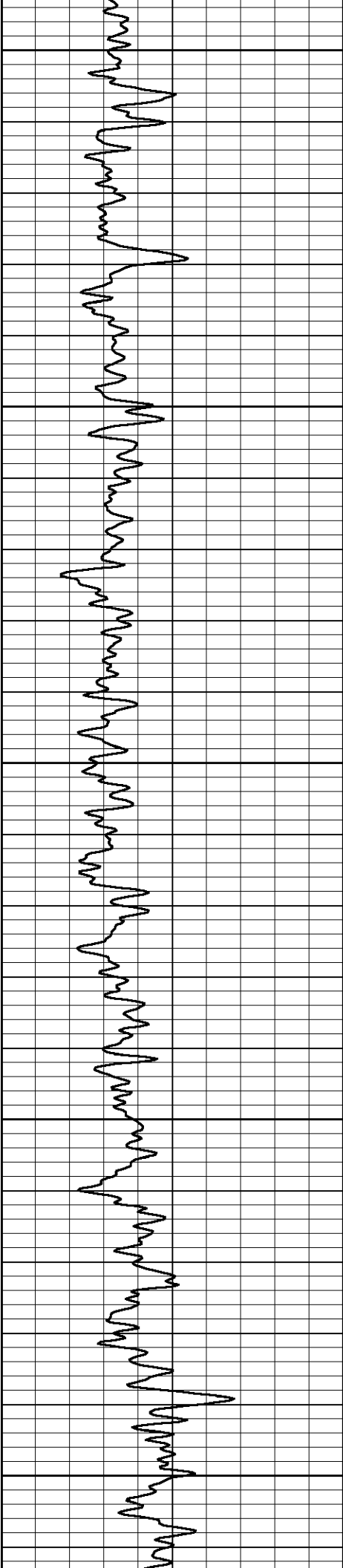
400

450

500

550





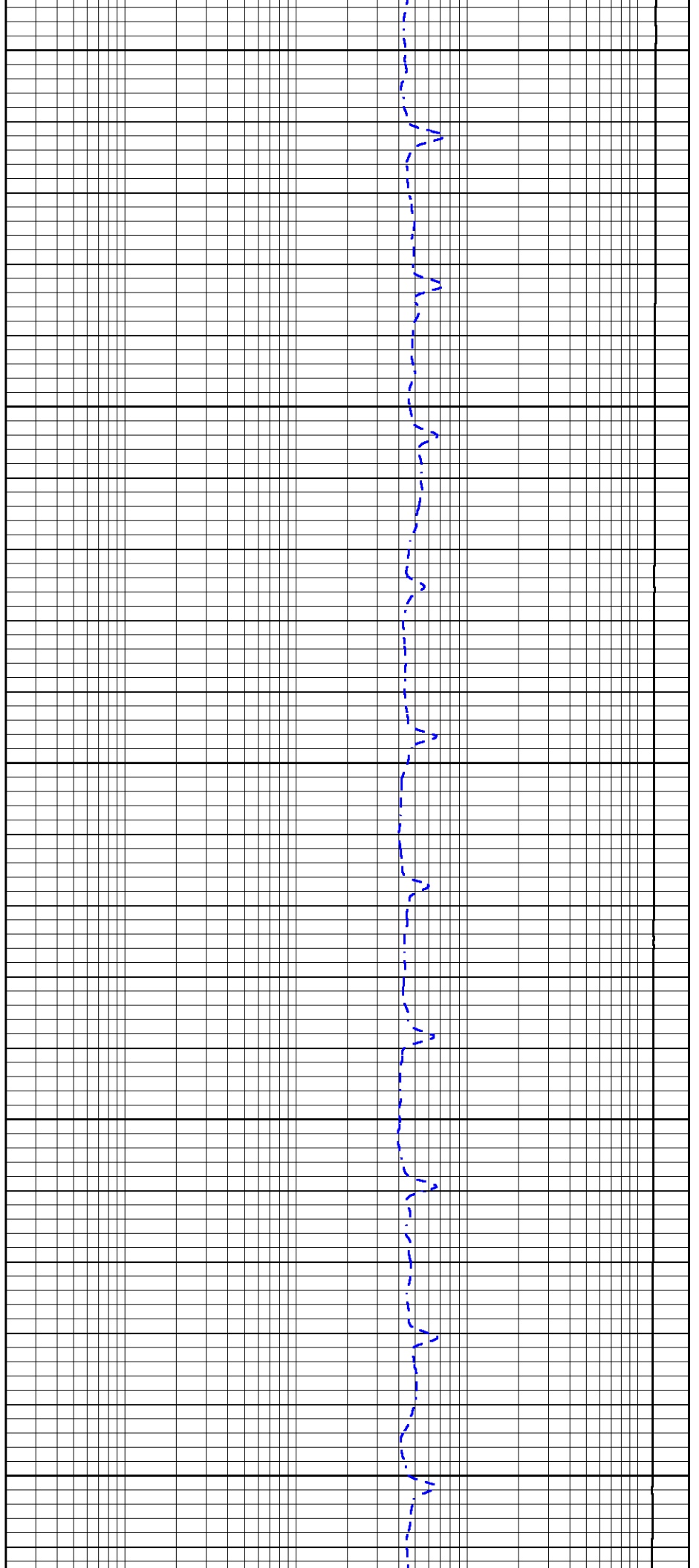
600

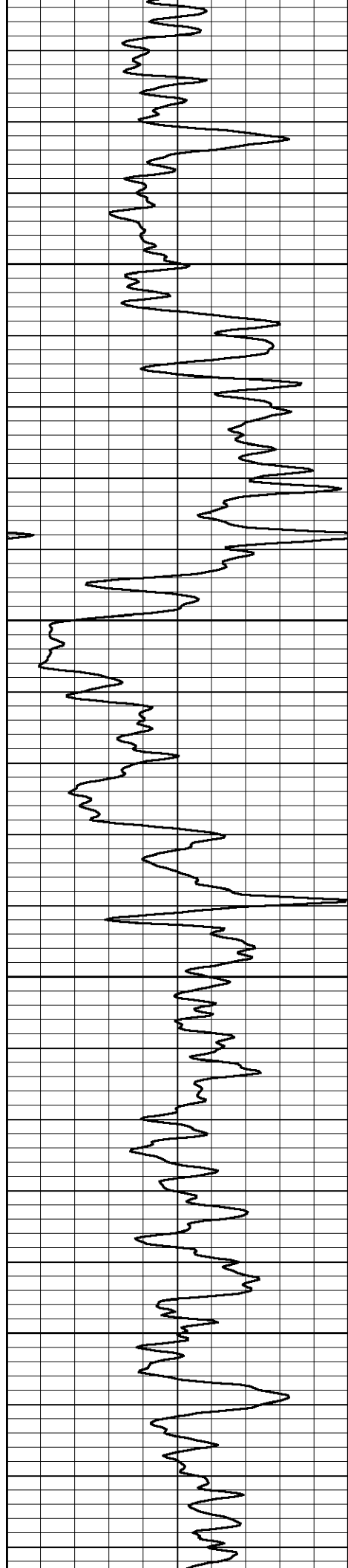
650

700

750

800



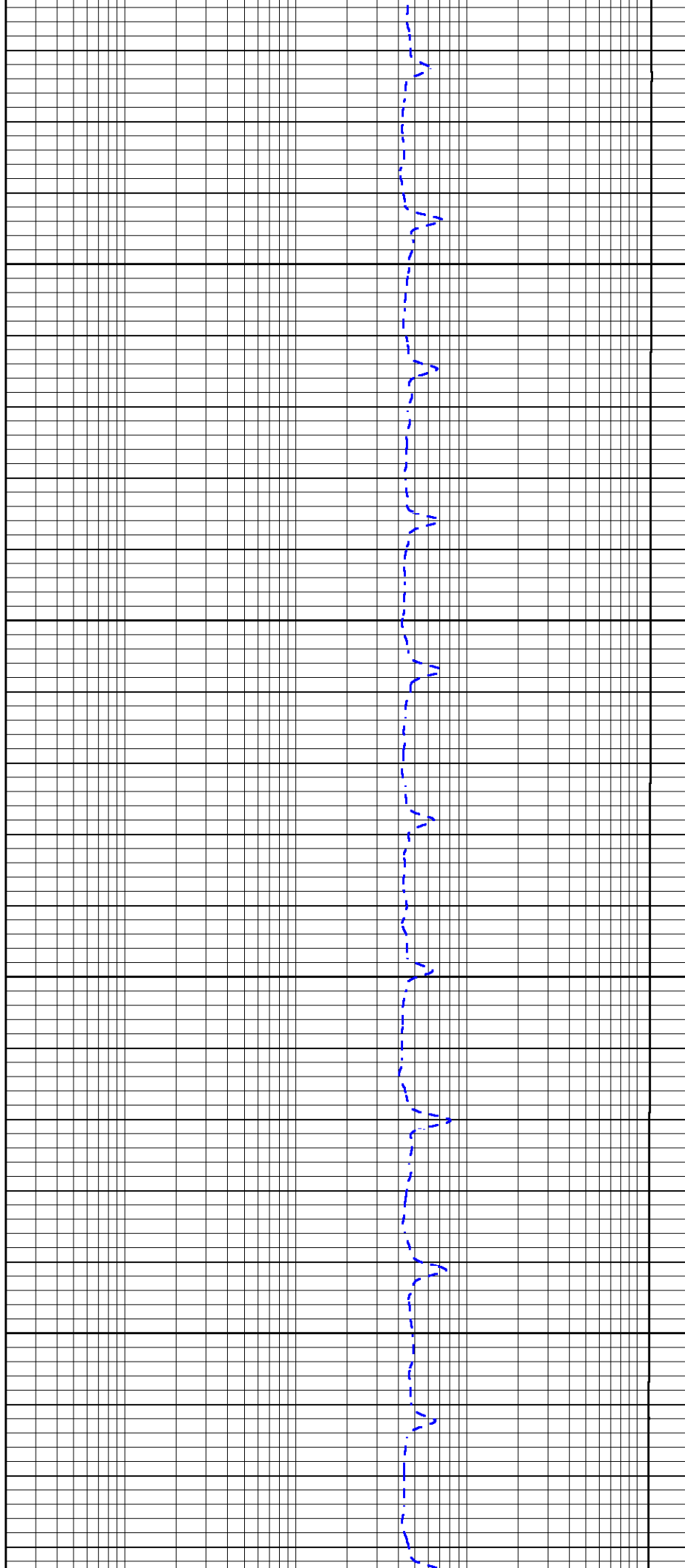


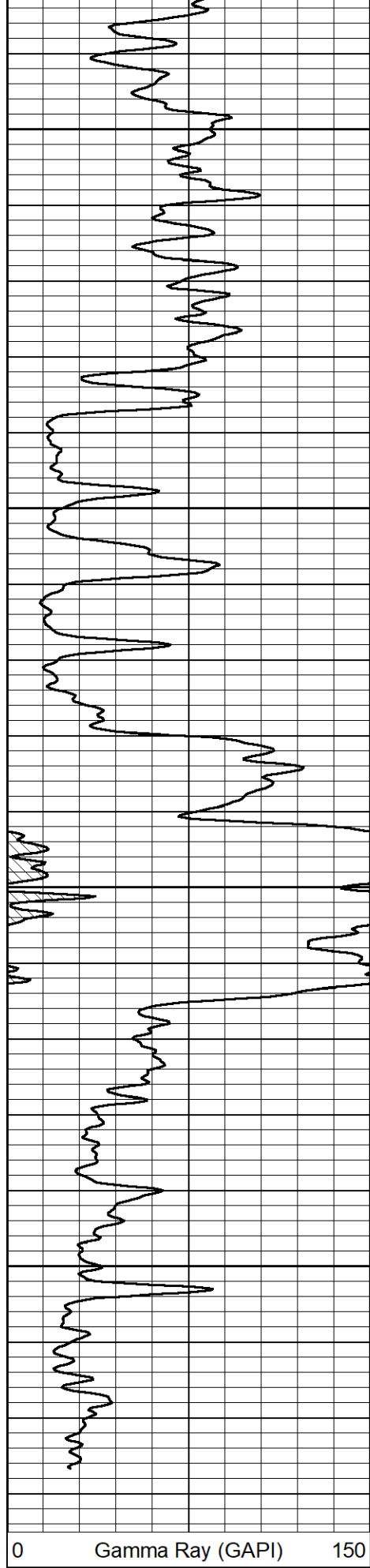
850

900

950

1000





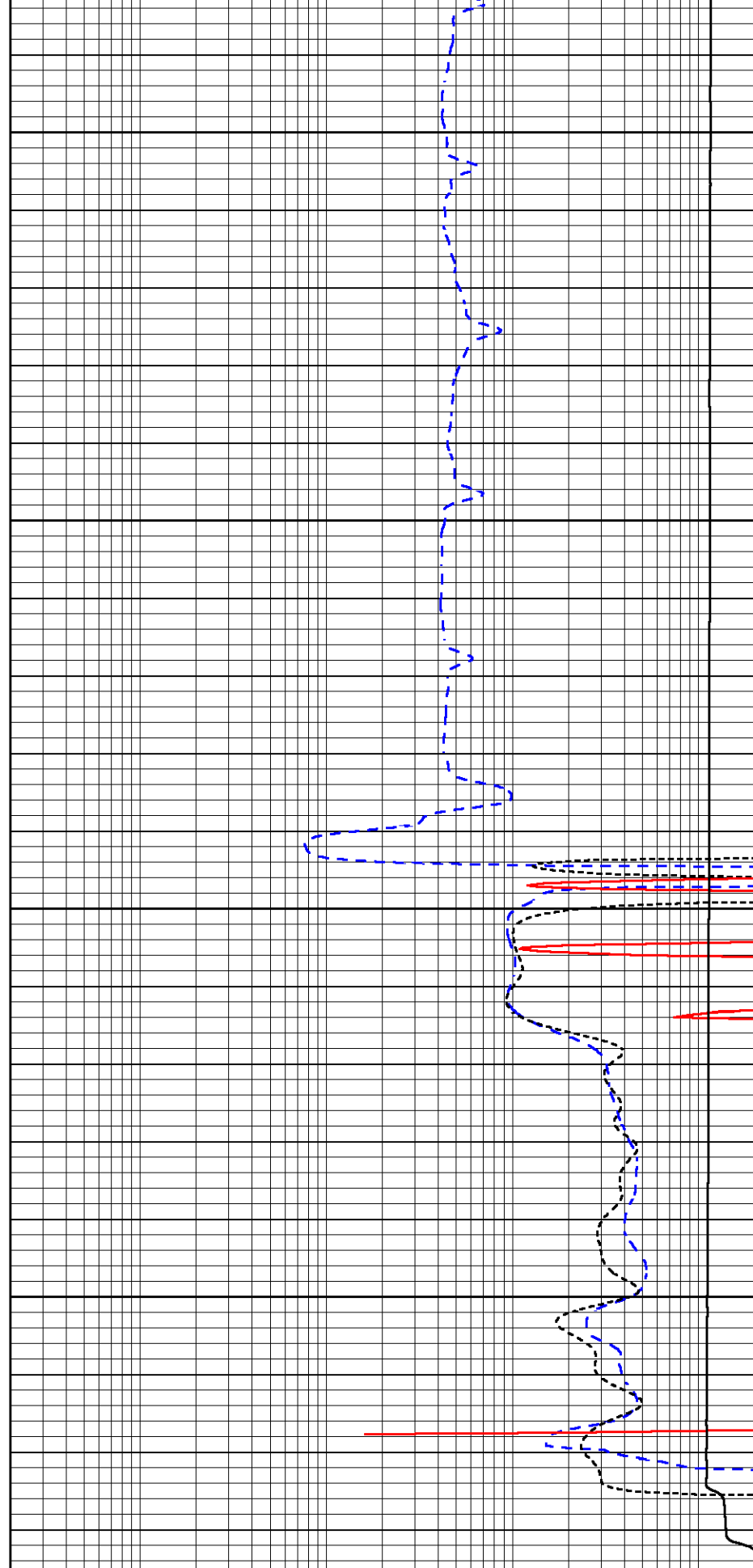
1050

1100

1150

1200

0 Gamma Ray (GAPI) 150



0.2 Deep Resistivity (Ohm-m) 2000

0.2 Medium Resistivity (Ohm-m) 2000

0.2 RLL3 (Ohm-m) 2000

10000 Line Tension (lb) 0

Calibration Report

Database File bnl_state #9.db
Dataset Pathname rag/pass2.1
Dataset Creation Sun Jun 01 12:48:26 2025

Sidewall Neutron Calibration Report

Serial Number: SP-701
Tool Model: M&W-SP

SWN Calibration Tue Aug 30 15:14:50 2016

Readings	Target	Normalization
2566.42 cps	1085.00 cps	0.3400

Caliper Calibration Tue Aug 30 15:14:50 2016

Readings	Reference	Gain	Offset
0.85	4.00	-18.50	19.71
0.31	14.00		

Gamma Ray Calibration Report

Serial Number: 103
Tool Model: M&W
Performed: Wed Aug 30 12:29:43 2023

Calibrator Value: 1.0 GAPI

Background Reading:	0.0	cps
Calibrator Reading:	1.0	cps

Sensitivity: 0.6000 GAPI/cps



Company BNL Enterprise
Well State #9
Field
County Las Animas
State Colorado