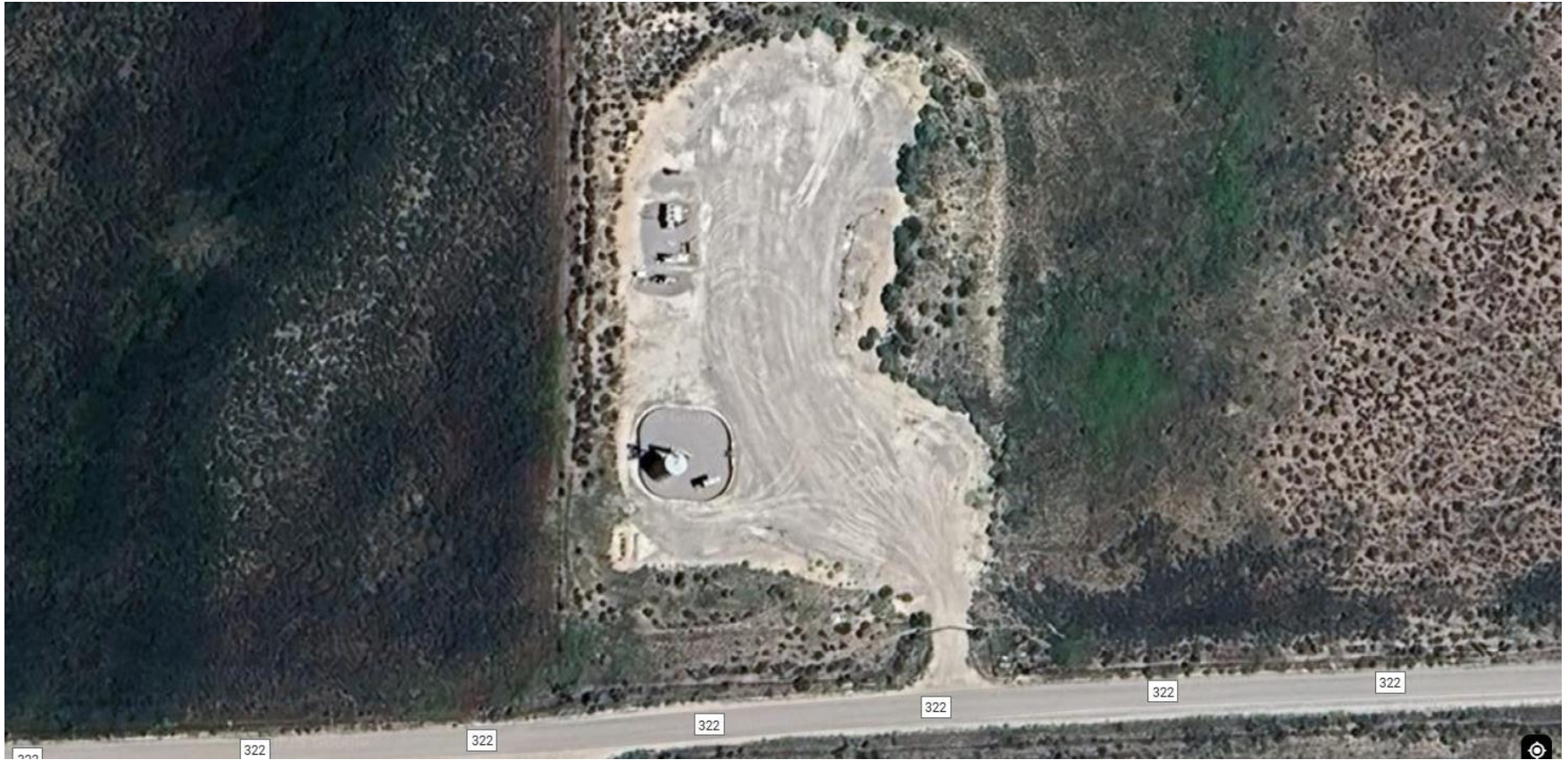


Storm Water Management and Erosion control

Location Name: QB ENERGY OPERATING LLC SHAEFFER 12-14B (012) Pad

Location #: 334650



Location Overview: Location is within High
Priority/Density/Black Bear Habitat areas.

Section/Township/Range: 12 7S93W



COLORADO
Energy & Carbon Management
Commission
Department of Natural Resources

Storm water Management and Erosion control
Location Name: QB ENERGY OPERATING LLC SHAEFFER 12-14B (012) Pad
Location #: 334650



North West corner of location.



North East corner of location.



South West corner of location.



South East corner of location.