

WGS84 $\pm 16\text{ft}$ 39.53423, -103.41935 $\text{m} \pm 4\text{m}$ 1601 $^{\circ}\text{T} \pm 10$ SW250



ECMC
Environmental
Field Inspection



Arikaree Creek SWD 1 Tank Battery
© 26-Jun-25 13:27:08
ECMC Environmental Inspection

Oil/spray/staining inside and outside secondary containment (Spill ID 488212)

WGS84 39.53423, -103.41935 Δ $\pm 4m$ 1601 Δ ± 10 SW213



ECMC
Environmental
Field Inspection



Arikaree Creek SWD 1 Tank Battery
© 26-Jun-25 13:27:12
ECMC Environmental Inspection

Oil/spray/staining inside and outside secondary containment (Spill ID 488212)

WGS84 $\pm 16\text{ft}$ 39.53423, -103.41935 $\text{m} \pm 4\text{m}$ 1601 $^{\circ}\text{T} \pm 10$ S182



Tank Contents
Label not legible
from a distance

Oil stained pea
gravel

Oil stained soil

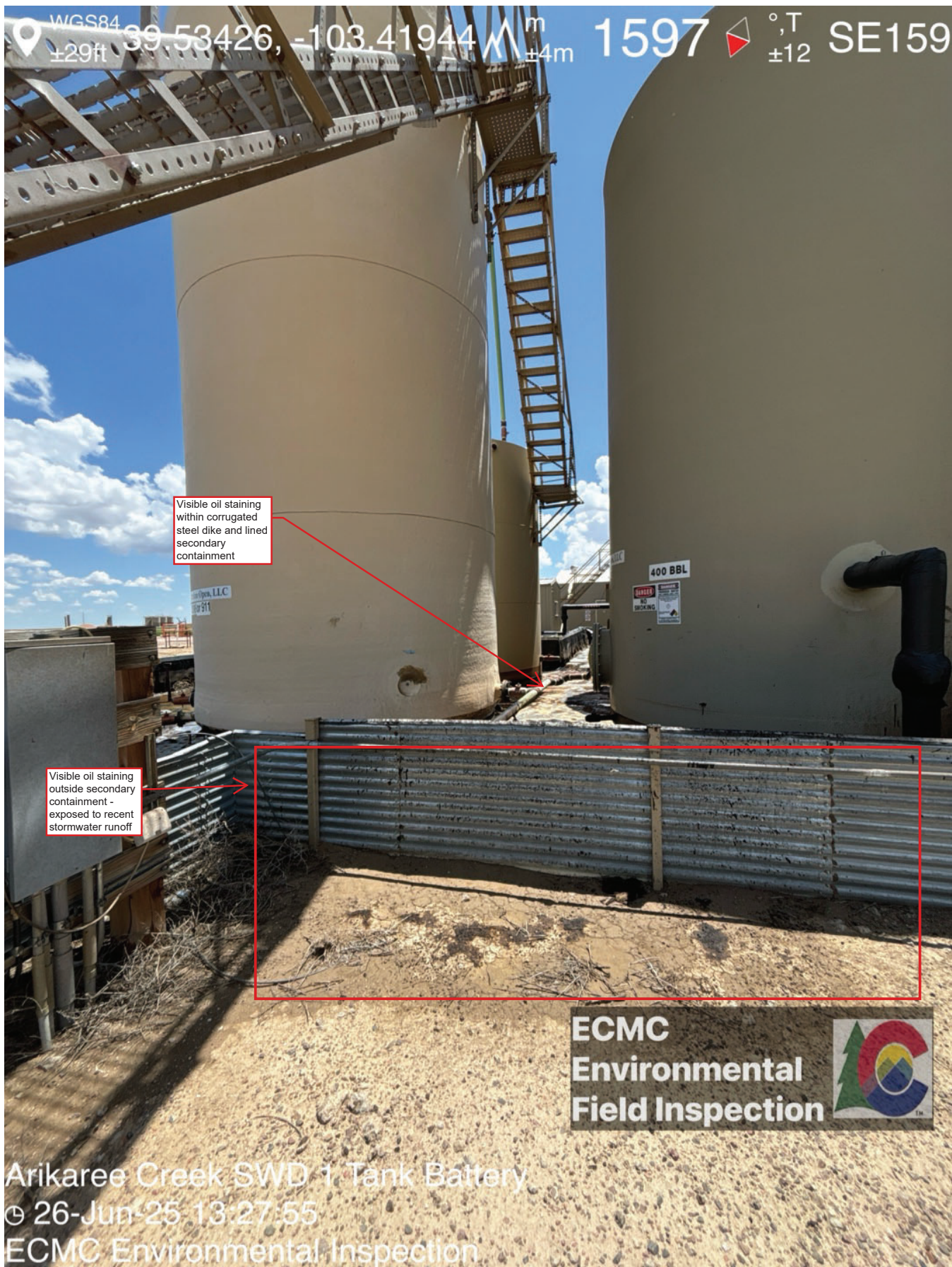
ECMC
Environmental
Field Inspection



Arikaree Creek SWD 1 Tank Battery
© 26-Jun-25 13:27:18
ECMC Environmental Inspection

WGS84 39.53427, -103.41947 Δ $\pm 29\text{ft}$ m $\pm 4\text{m}$ 1597 °T ± 12 SW208





WGS84
±29ft

39.53426, -103.41944

m
±4m

1597



°T
±12

SE159

Visible oil staining
within corrugated
steel dike and lined
secondary
containment

Visible oil staining
outside secondary
containment -
exposed to recent
stormwater runoff

ECMC
Environmental
Field Inspection



Arikaree Creek SWD 1 Tank Battery
© 26-Jun-25 13:27:55
ECMC Environmental Inspection

WGS84 39.53425, -103.41952 Δ $\pm 24\text{ft}$ m $\pm 4\text{m}$ 1598 \angle $\pm 12^\circ$ W259



Weeds

WGS84 $\pm 34\text{ft}$ 39.53422, -103.41952 $\text{m} \pm 5\text{m}$ 1597 $^{\circ}\text{T} \pm 12$ SE151



Visible oil staining throughout tank battery equipment within corrugated steel dike and lined secondary containment

WGS84 39.53418, -103.41956 Δ ± 37 ft ± 7 m 1597 Δ ± 12 NE55



Visible oil staining throughout tank battery equipment within corrugated steel dike and lined secondary containment

WGS84 39.53419, -103.41956 Δ m ± 6 m 1597 Δ T ± 11 E83



Oil stained pea
gravel

ECMC
Environmental
Field Inspection



Arikaree Creek SWD 1 Tank Battery
26-Jun-25 13:29:31
ECMC Environmental Inspection

Visible oil staining throughout tank battery equipment within corrugated steel dike and lined secondary containment

WGS84 39.53414, -103.41955 Δ m $\pm 8\text{m}$ 1597 °T ± 12 SE110
±47ft



Arikaree Creek SWD | Tank Battery
© 26-Jun-25 13:30:02
ECMC Environmental Inspection

Oil staining outside
secondary
containment

Visible oil staining throughout tank battery equipment within corrugated steel dike and lined secondary containment

WGS84 39.53406, -103.41956 $\pm 39\text{ft}$ $\pm 5\text{m}$ 1597 ± 12 °T E92



Arikaree Creek SWD 1 Tank Battery
Ⓢ 26-Jun-25 13:30:28
ECMC Environmental Inspection

Visible oil staining throughout tank battery equipment within corrugated steel dike and lined secondary containment



Stormwater erosion. Rill formation.
Weeds.



E&P waste stockpiled in bermed and lined containment
Weeds

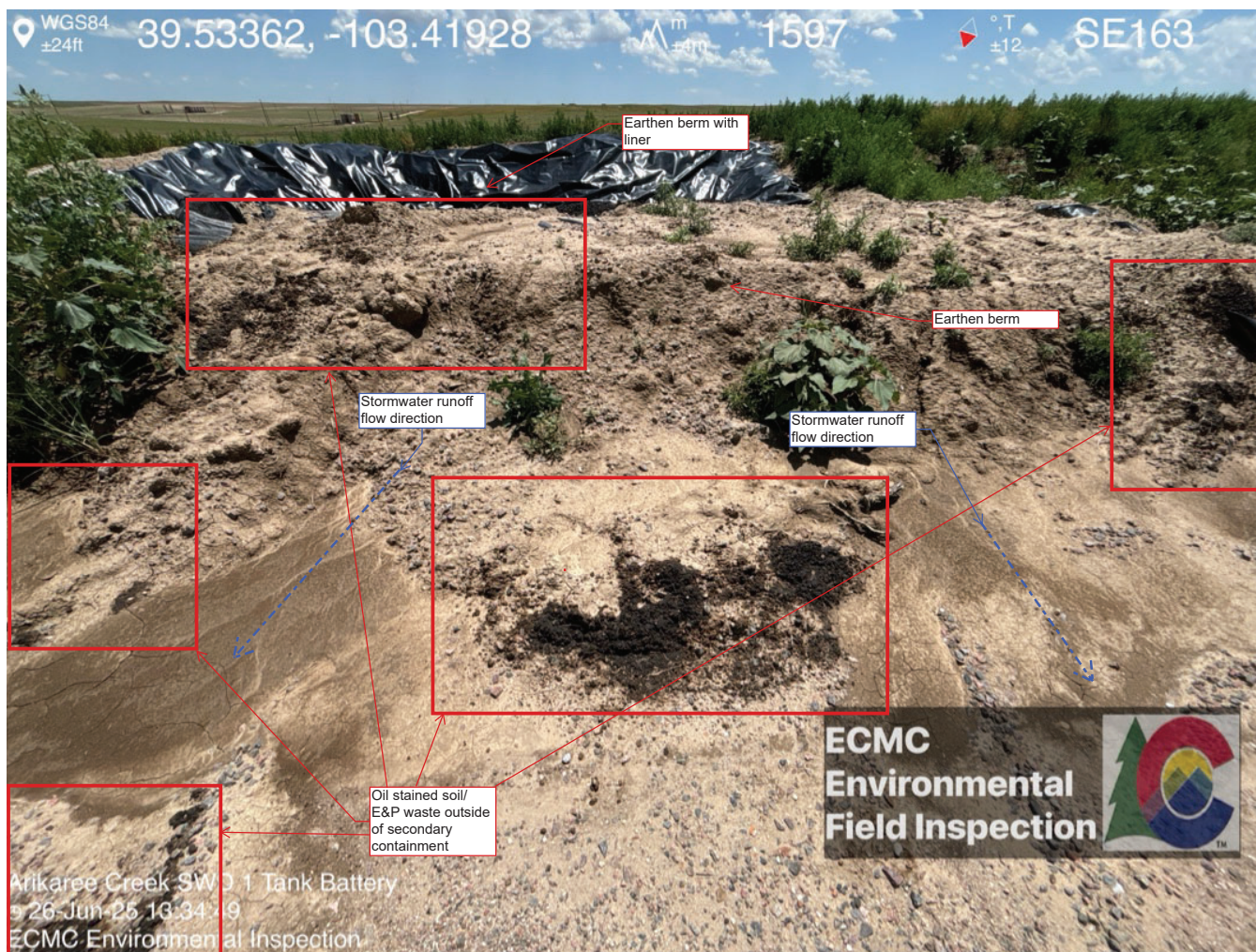


E&P waste/stained soil has spilled outside lined earthen berm containment. Recent stormwater appears to have transported visibly impacted material beyond the immediately affected area.

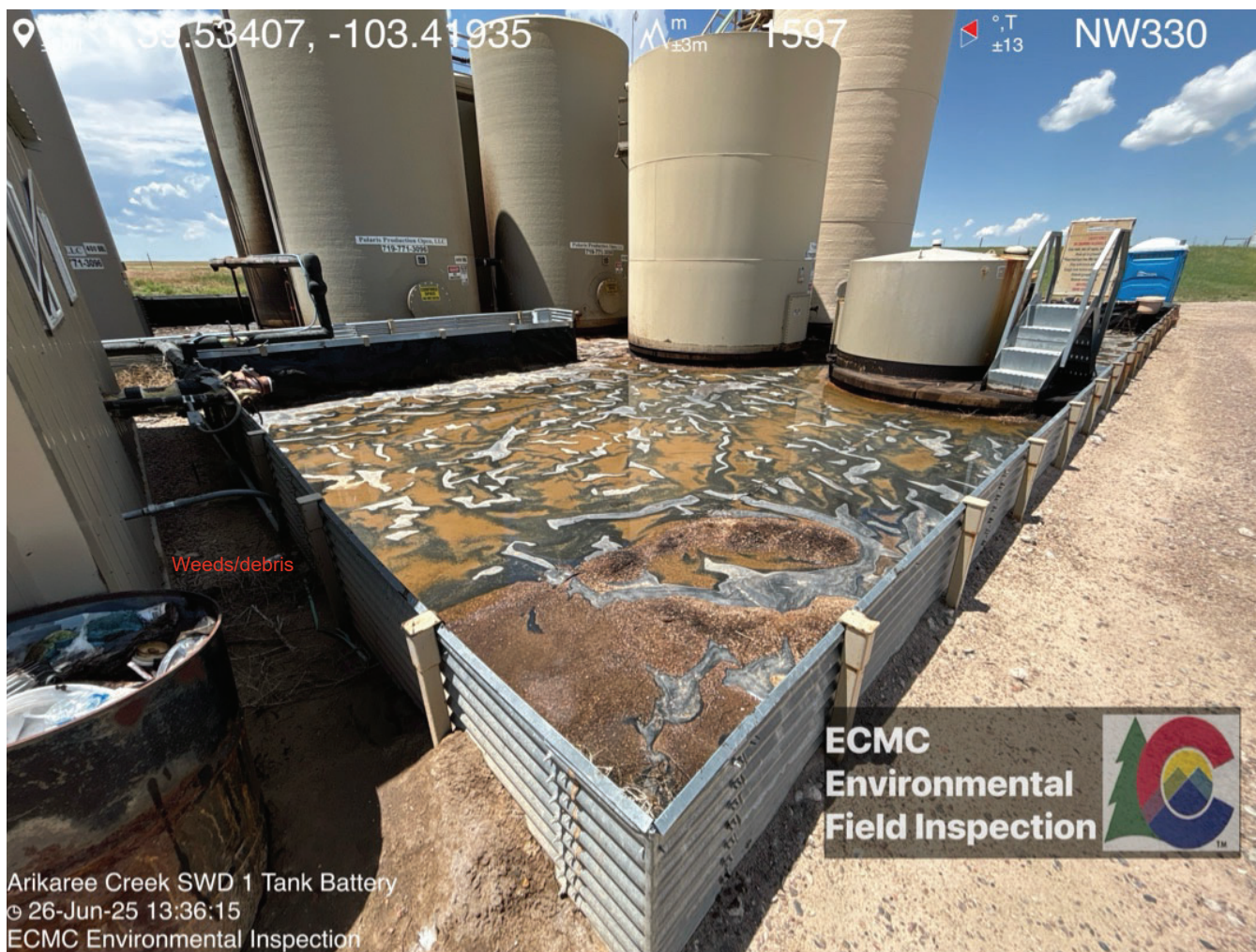


Arikaree Creek SWD 1 Tank Battery
© 26-Jun-25 13:34:26
ECMC Environmental Inspection

E&P waste stockpiled in bermed and lined containment
Weeds



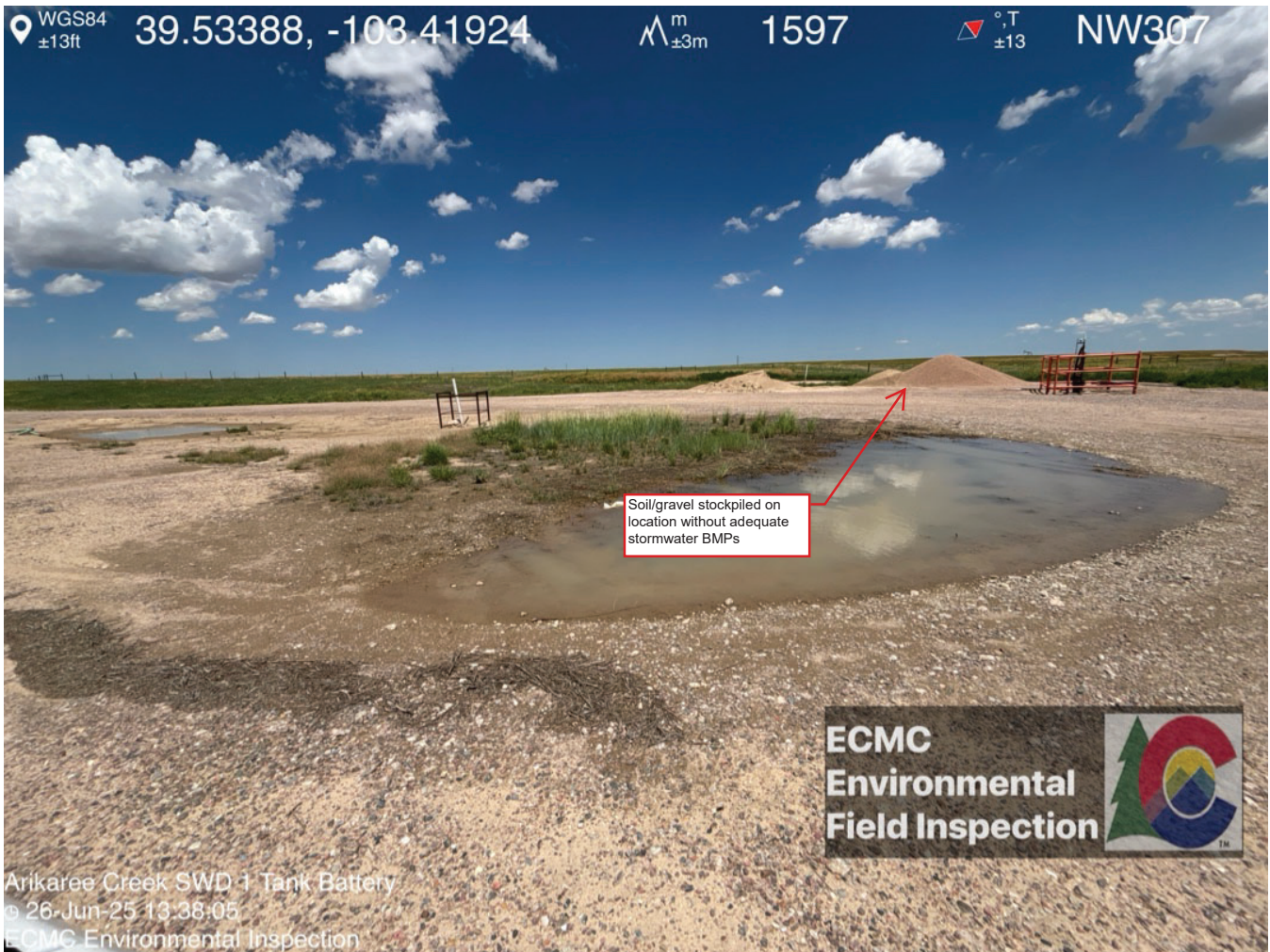
E&P waste stockpiled in bermed and lined containment
 E&P waste has spilled outside of secondary containment - recent stormwater runoff appears to have transported E&P waste beyond the immediate area.
 Weeds



Visible oil staining throughout tank battery equipment within corrugated steel dike and lined secondary containment



Unused equipment



WGS84 $\pm 12\text{ft}$ 39.53492, -103.41923 $\text{m} \pm 3\text{m}$ 1599 $^\circ\text{T} \pm 10$ NW291



ECMC
Environmental
Field Inspection



Anaaree Creek SWD.1 Tank Battery
© 20 Jun-25 13:38:55
ECMC Environmental Inspection

Signage at entrance - Note: all AST contents labelled produced water