



Weeds  
Faded NFPA placards  
Rusted/pitted 300 bbl steel crude oil ASTs  
Inadequate secondary containment. Earthen secondary containment berm(s) is(are) not adequately sized to contain volume of the largest tank plus freeboard allowance.  
Earthen secondary containment berm(s) is(are) not sufficiently impervious to contain spills/releases.



WGS84  
±34ft

39.81399, -103.19361

m  
±8m

1466

°T  
±10

W267



Weeds  
Inadequate secondary containment. Earthen secondary containment berm(s) is(are) not adequately sized to contain volume of the largest tank plus freeboard allowance.  
Earthen secondary containment berm(s) is(are) not sufficiently impervious to contain spills/releases.



WGS84 39.81407, -103.19363  $\Delta$  m  $\pm 8$ m 1467  $\triangle$  °, T  $\pm 11$  NE51



**ECMC  
Environmental  
Field Inspection**



State 14

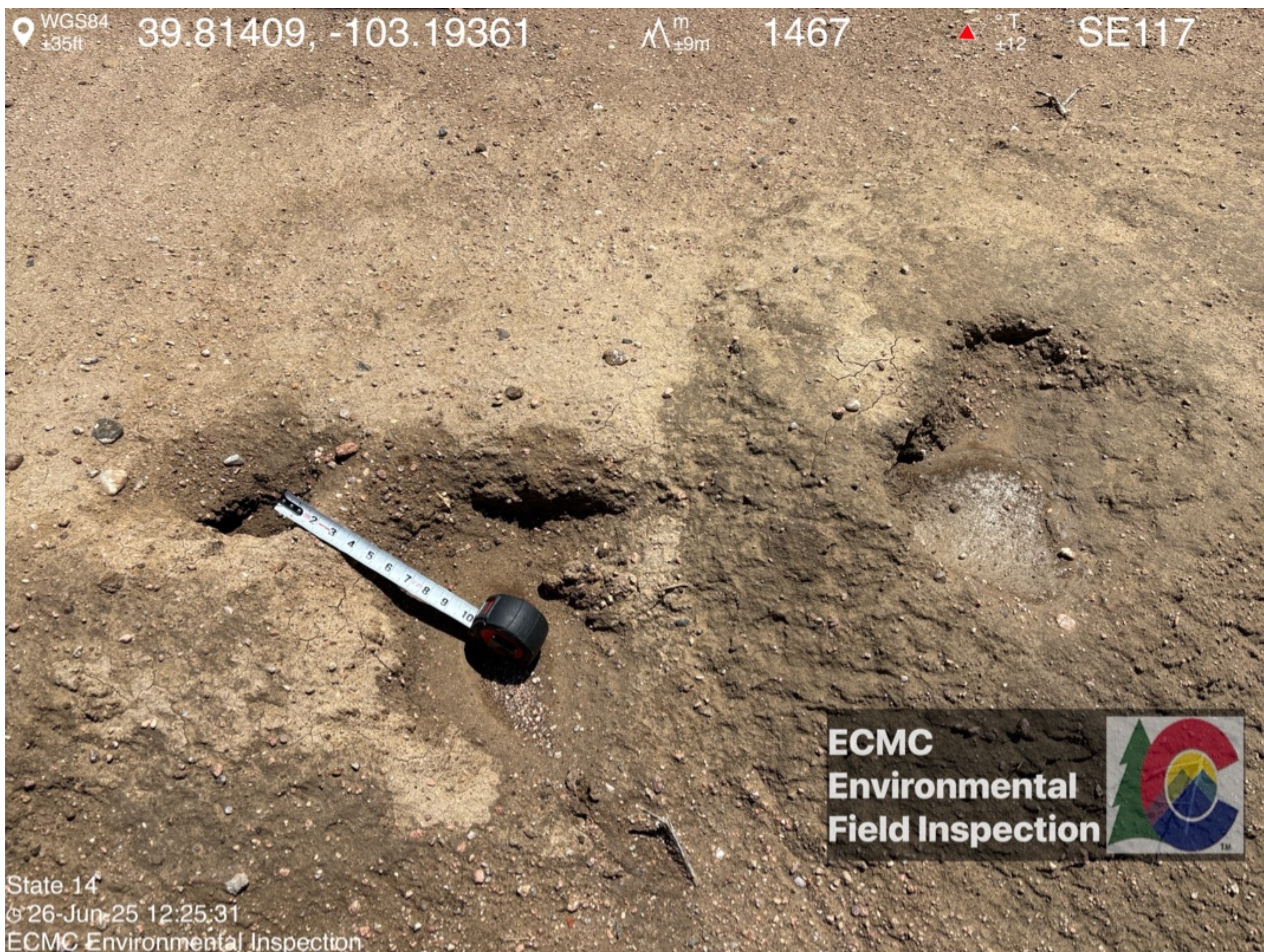
26-Jun-25 12:24:58

ECMC Environmental Inspection

**Burrows**

Inadequate secondary containment. Earthen secondary containment berm(s) is(are) not adequately sized to contain volume of the largest tank plus freeboard allowance.  
Earthen secondary containment berm(s) is(are) not sufficiently impervious to contain spills/releases.





**Burrows**

Inadequate secondary containment. Earthen secondary containment berm(s) is(are) not adequately sized to contain volume of the largest tank plus freeboard allowance.  
Earthen secondary containment berm(s) is(are) not sufficiently impervious to contain spills/releases.



WGS84  $\pm 20\text{ft}$  39.81402, -103.19376  $\Delta^m_{\pm 5\text{m}}$  1467  $\triangle^{\circ, T}_{\pm 12}$  NW310



**ECMC  
Environmental  
Field Inspection**



State 14  
⊙ 26-Jun-25 12:26:20  
ECMC Environmental Inspection

Earthen secondary containment berm(s) is(are) not adequate to contain volume of the largest tank plus freeboard allowance.  
Earthen secondary containment berm(s) is(are) not sufficiently impervious to contain spills/releases.



WGS84 39.81400, -103.19375  $\Delta$   $\pm 19\text{ft}$   $\text{m}$   $\pm 5\text{m}$  1467  $^{\circ}\text{T}$   $\pm 11$  SW230



**ECMC  
Environmental  
Field Inspection**



State 14  
Ⓢ 26-Jun-25 12:26:26  
ECMC Environmental Inspection

Weeds  
Erosion



WGS84   $\pm 16\text{ft}$  39.81400, -103.19395  $\wedge^m_{\pm 4\text{m}}$  1467   $^{\circ},T_{\pm 12}$  NW332



**ECMC  
Environmental  
Field Inspection**



State 14  
⊙ 26-Jun-25 12:26:55  
ECMC Environmental Inspection

Weeds  
Erosion - Sediment transport  
Unknown stockpile - No Stormwater BMPs/signage





State 14  
© 26-Jun-25 12:27:18  
ECMC Environmental Inspection

Weeds  
Erosion - Sediment transport













State 14  
© 26-Jun-25 12:27:48  
ECMC Environmental Inspection

ECMC  
Environmental  
Field Inspection

Weeds  
Pit  
Rill erosion





State 14  
© 26-Jun-25 12:27:53  
ECMC Environmental Inspection

Weeds  
Unknown - Open excavation/Former Pit. Stained soil observed along sidewalls.  
Erosion & transport of sediment off location



WGS84  $\pm 26\text{ft}$  39.81392, -103.19418  $\text{m}$   $\pm 6\text{m}$  1468  $^{\circ}\text{T}$   $\pm 11$  E100



**ECMC  
Environmental  
Field Inspection**



State 14  
26-Jun-25 12:29:08  
ECMC Environmental Inspection

Weeds  
Erosion - Sediment transport off location  
Earthen secondary containment berm(s) is(are) not adequate to contain volume of the largest tank plus freeboard allowance.  
Earthen secondary containment berm(s) is(are) not sufficiently impervious to contain spills/releases.

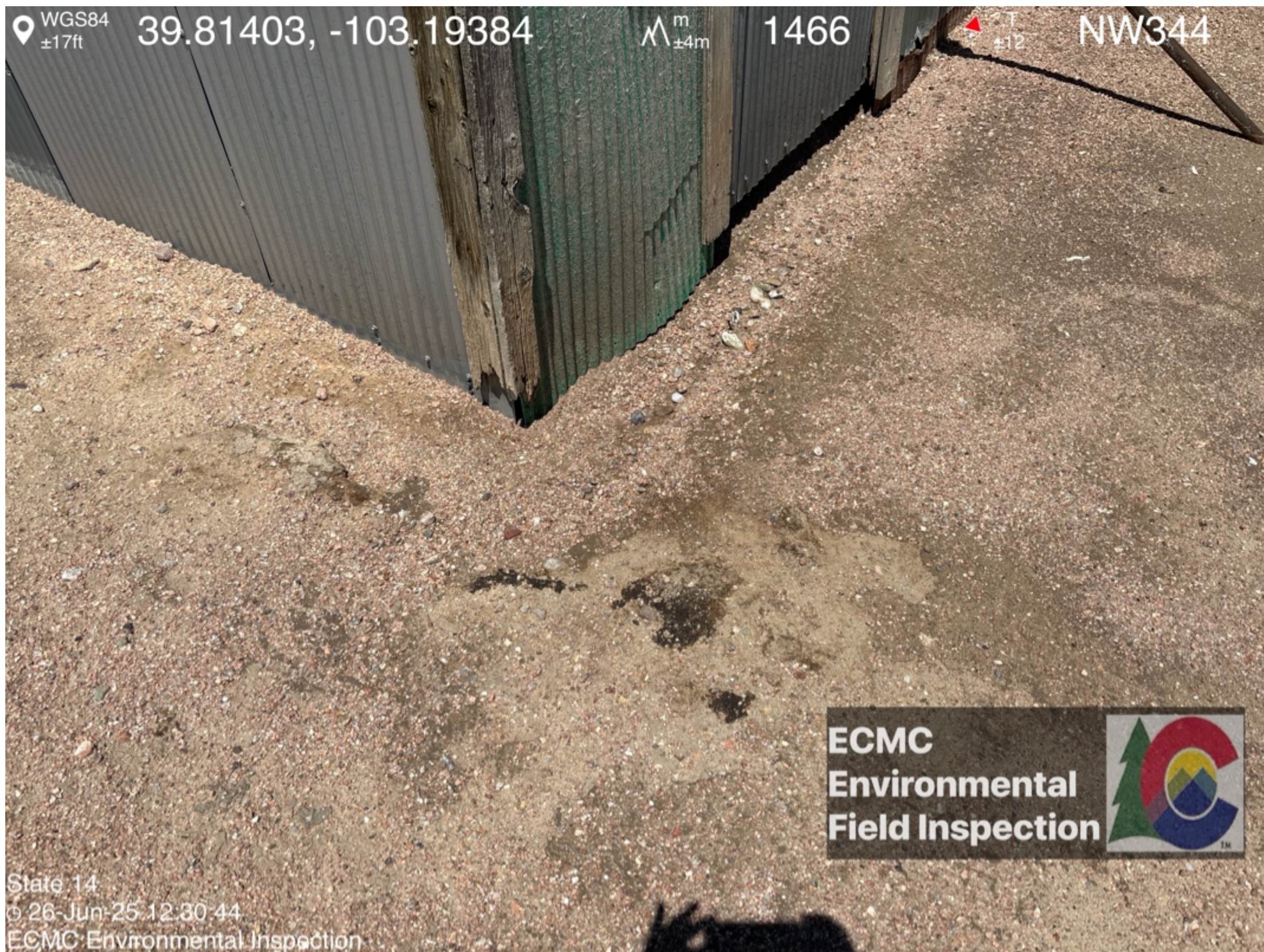




State 14  
© 26-Jun-25 12:29:21  
ECMC Environmental Inspection

Weeds  
Erosion of the earthen pit - Sediment transport off location.





Stained soil observed outside heater treater shed





Stained soil observed within heater treater shed



WGS84 39.81406, -103.19382  $\Delta$   $\pm 33\text{ft}$   $\pm 7\text{m}$  1469  $\Delta$   $\pm 11$  NW306



ECMC  
Environmental  
Field Inspection



State 14  
© 26-Jun-25 12:31:56  
ECMC Environmental Inspection

Stained soil observed within FWKO shed



WGS84 39.81405, -103.19383 M 1469 °T SW253  
±38ft ±6m ±11



ECMC  
Environmental  
Field Inspection



State 14  
⊙ 26-Jun-25 12:32:01  
ECMC Environmental Inspection

Staining soil observed within FWKO shed





WGS84  
±14ft

39.81374, -103.19545

$\Delta$ <sup>m</sup>  
±3m

1466

°T  
±10

NE25

**ECMC  
Environmental  
Field Inspection**



State 14  
26 Jun 25 12:41:04 •  
ECMC Environmental Inspection

Weeds  
Erosion - Sediment transport off location