



## DUAL INDUCTION

MIDWEST WIRELINE

Company BNL Enterprise			
Well	Jackson 02 L4 3154		
Field			
County	Las Animas		
State	Colorado		
Location: API #: 1200 FNL & 646 FWL			
Permanent Datum	Ground Level	Elevation	5612
Log Measured From	Kelly Bushing		
Drilling Measured From	Kelly Bushing		
SEC 2 TWP 31S RGE 54W		Other Services	
		SWNCDL	
Date	5/4/2025		
Run Number	One		
Depth Driller	1232		
Depth Logger	1230		
Bottom Logged Interval	1228		
Top Log Interval	00		
Casing Driller	7.0 @ 1146		
Casing Logger	1142		
Bit Size	6.125		
Type Fluid in Hole	Water		
Salinity, ppm CL			
Density / Viscosity			
pH / Fluid Loss			
Source of Sample	Flowline		
Rm @ Meas. Temp	@		
Rmf @ Meas. Temp	@		
Rmc @ Meas. Temp	@		
Source of Rmf / Rmc	Charts		
Rm @ BHT	@		
Operating Rig Time	2 Hours		
Max Rec. Temp. F	86		
Equipment Number	24		
Location	Hays, KS		
Recorded By	D. Schmidt		
Witnessed By	Trent Skaggs		

<<< Fold Here >>>

All interpretations are opinions based on inferences from electrical or other measurements and Midwest Wireline LLC cannot and does not guarantee the accuracy or correctness of any interpretation, and Midwest Wireline LLC will not be liable or responsible for any loss, costs, damages, or expenses incurred or sustained by anyone resulting from any interpretation made by any of our officers, agents or employees.

### Comments

N/A DENOTES NOT AVAILABLE OR NON-APPLICABLE.

Kim, CO

East on Hwy 160 to Rd 179, 11 North to Rd 54,  
about 3 East then Southeast, then back Northeast to rig

Log Measured From: Kelly Bushing

Ft. Above Permanent Datum

THANK YOU FOR USING MIDWEST WIRELINE LLC  
785-625-3858

### Your Midwest Wireline Crew

Engineer: D. Schmidt  
Operator:  
Operator:  
Operator:

### This Log Record Was Witnessed By

Primary Witness: Trent Skaggs  
Secondary Witness:  
Secondary Witness:  
Secondary Witness:



# Log Variables

DatabaseC:\ProgramData\Warrior\Data\bnl\_jackson 02 I4 3154.db  
Dataset field/well/dil/pass4.1/\_vars\_

## Top - Bottom

BOREID in 6.125	BOTTEMP degF 86	CASEOD in 7	CASETHCK in 0.272	CASEWGHT lb/ft 20	MATRXDEN g/cc 2.68	MAXAMPL mV 0	MINAMPL mV 1
MINATTN db/ft 0.8	PERFS No	PPT usec 0	SNDERR mmho/m 8	SNDERRM mmho/m 8.6	SPSHIFT mV 0	SRFTEMP degF 50	TDEPTH ft 1106

## Variable Description

BOREID : Borehole I.D.  
BOTTEMP : Bottom Hole Temperature  
CASEOD : Casing O.D.  
CASETHCK : Casing Thickness  
CASEWGHT : Casing Weight  
MATRXDEN : Matrix Density  
MAXAMPL : Maximum Amplitude  
MINAMPL : Minimum Amplitude

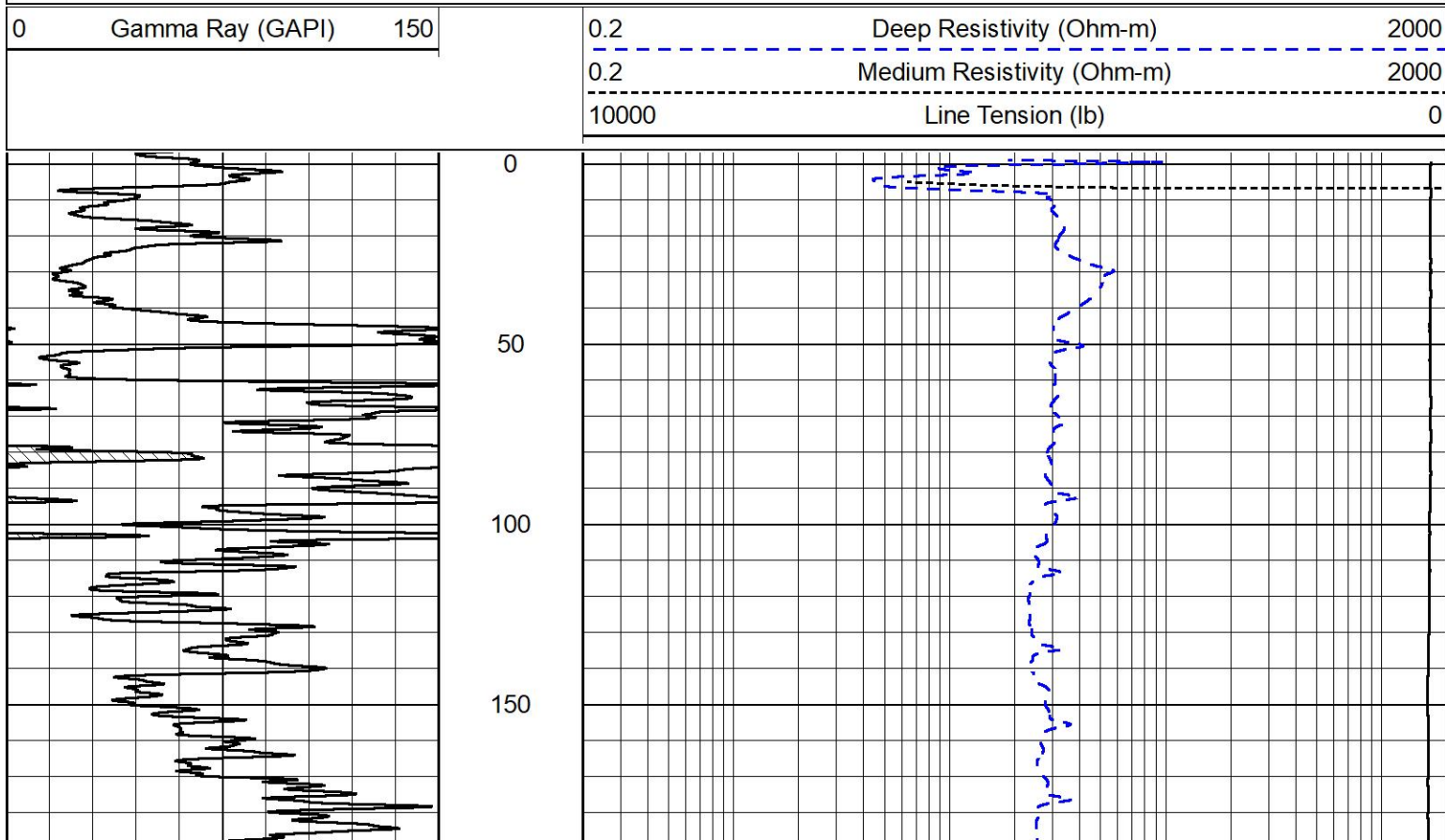
MINATTN : Minimum Attenuation  
PERFS : Perforation Flag  
PPT : Predicted Pipe Time  
SNDERR : Deep Sonde Error Correction  
SNDERRM : Medium Sonde Error Correction  
SPSHIFT : S.P. Baseline Offset  
SRFTEMP : Surface Temperature  
TDEPTH : Total Depth

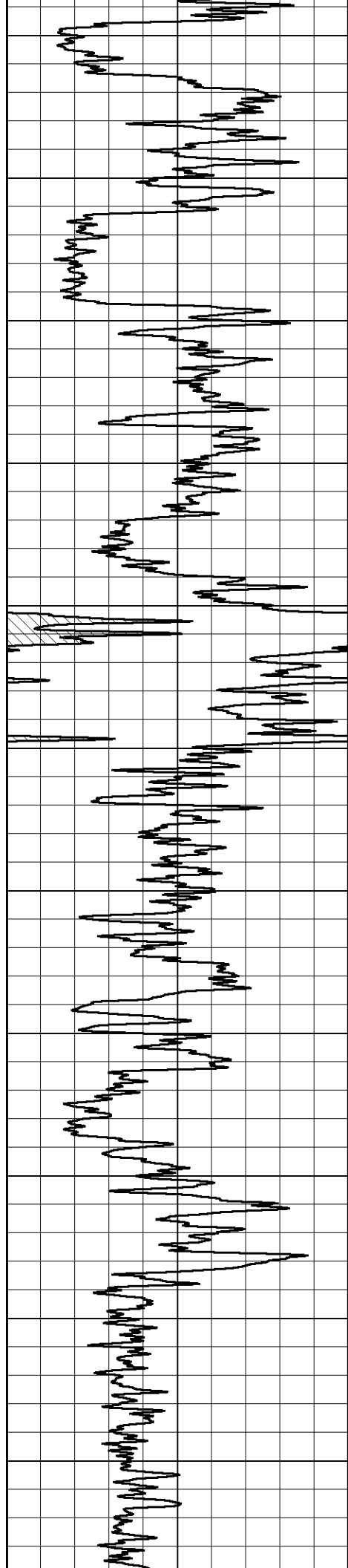


## DETAIL SECTION

### MAIN PASS

Database File bnl\_jackson 02 I4 3154.db  
Dataset Pathname dil/pass4.1  
Presentation Format \_dil2in  
Dataset Creation Sun May 04 11:21:09 2025  
Charted by Depth in Feet scaled 1:600





200

250

300

350

400

450

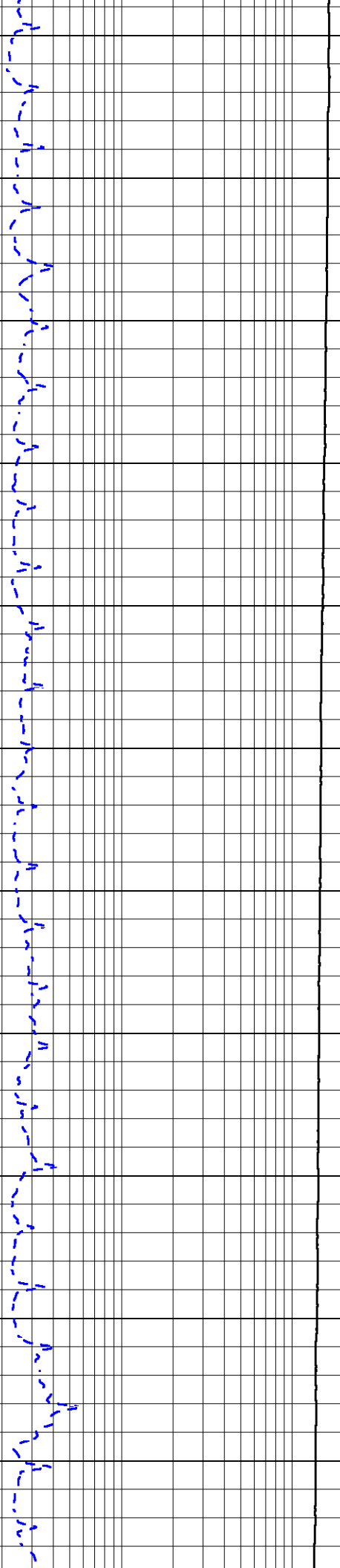
500

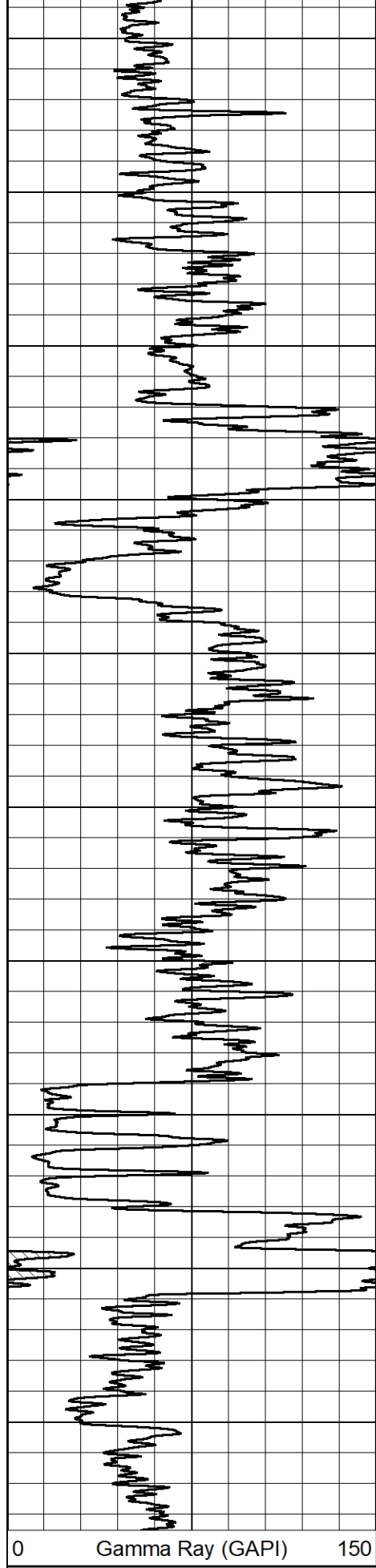
550

600

650

700





0 Gamma Ray (GAPI) 150

750

800

850

900

950

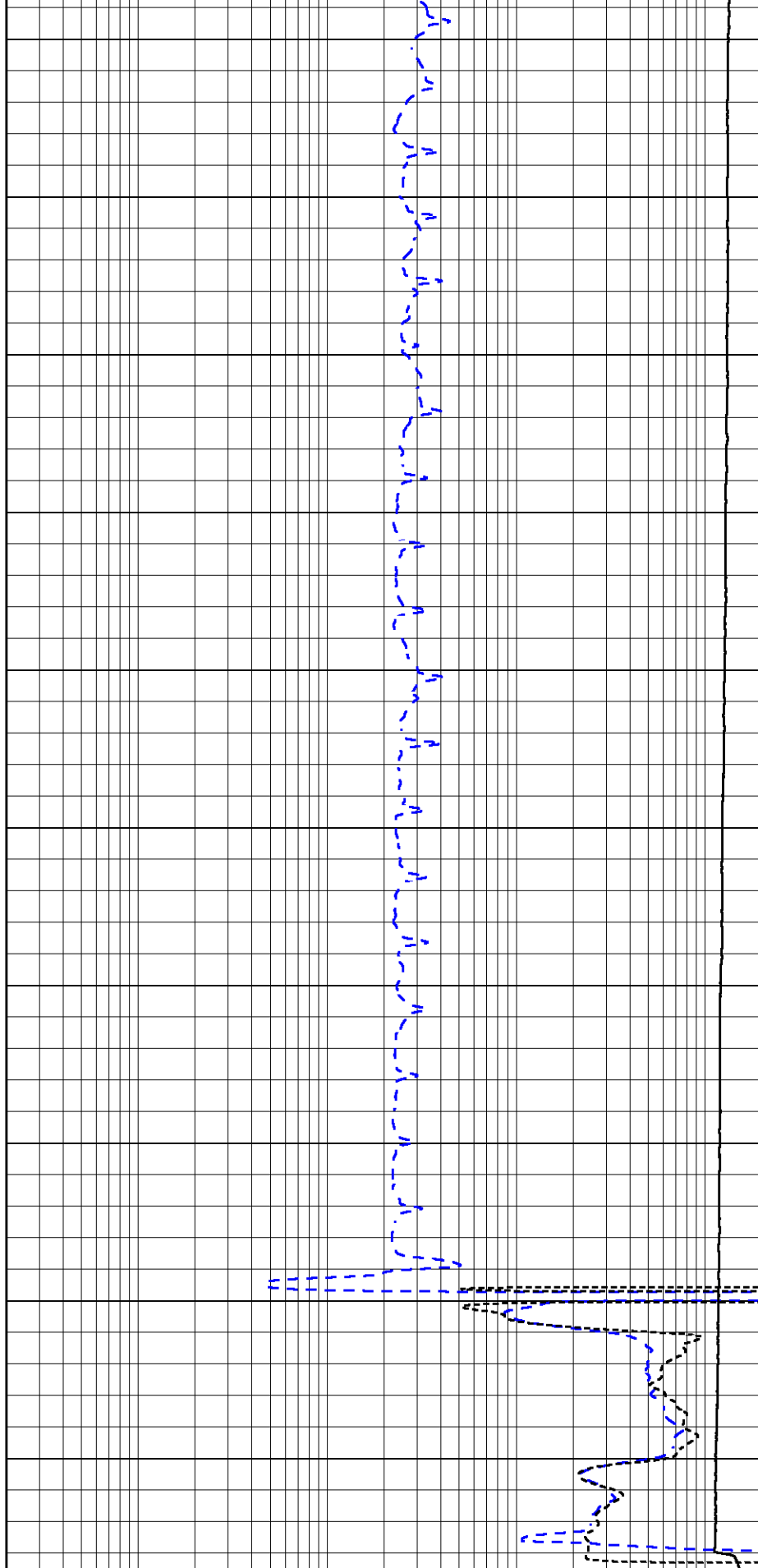
1000

1050

1100

1150

1200



0.2 Deep Resistivity (Ohm-m) 2000

0.2 Medium Resistivity (Ohm-m) 2000

10000 Line Tension (lb) 0





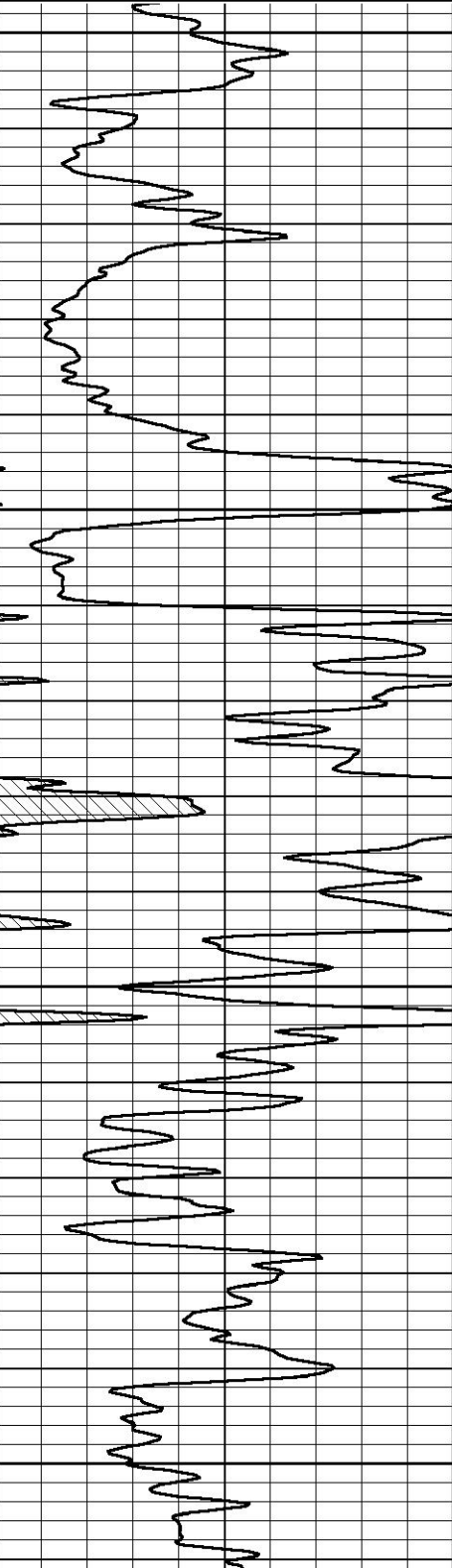
DETAIL SECTION

MAIN PASS

Database File        bnl\_jackson 02 I4 3154.db  
Dataset Pathname    dil/pass4.1  
Presentation Format   \_dil  
Dataset Creation     Sun May 04 11:21:09 2025  
Charted by           Depth in Feet scaled 1:240

0        Gamma Ray (GAPI)        150

0.2	Deep Resistivity (Ohm-m)	2000
0.2	Medium Resistivity (Ohm-m)	2000
10000	Line Tension (lb)	0

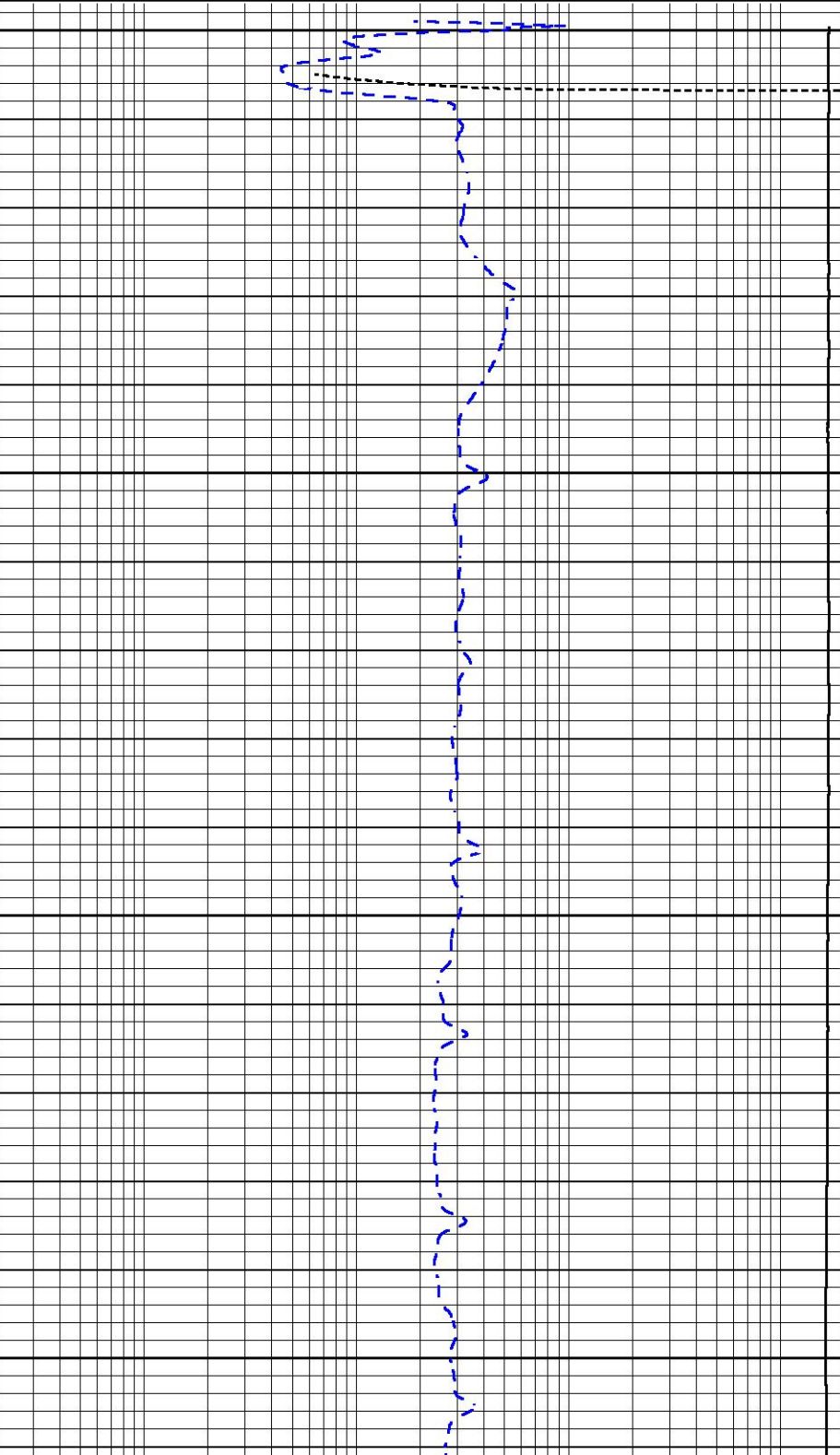


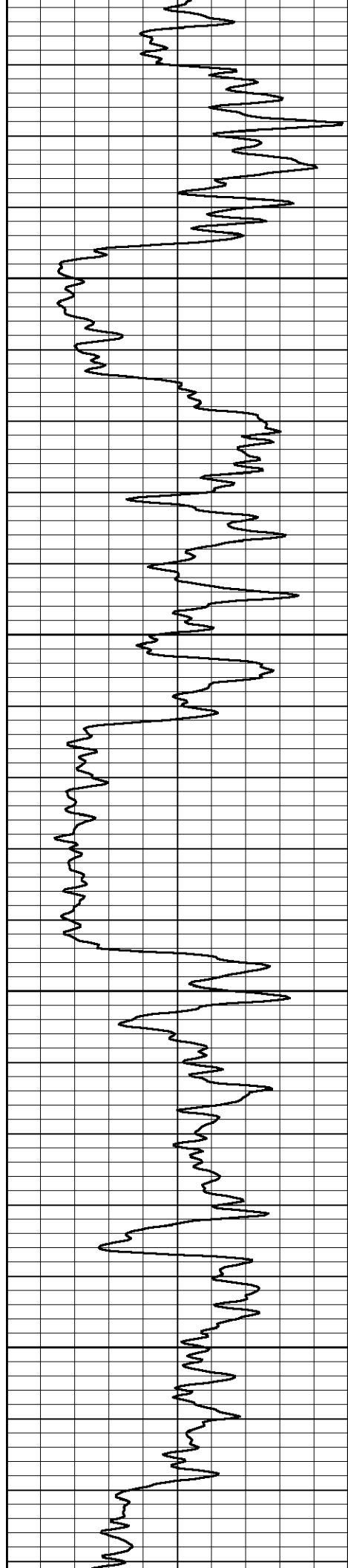
0

50

100

150



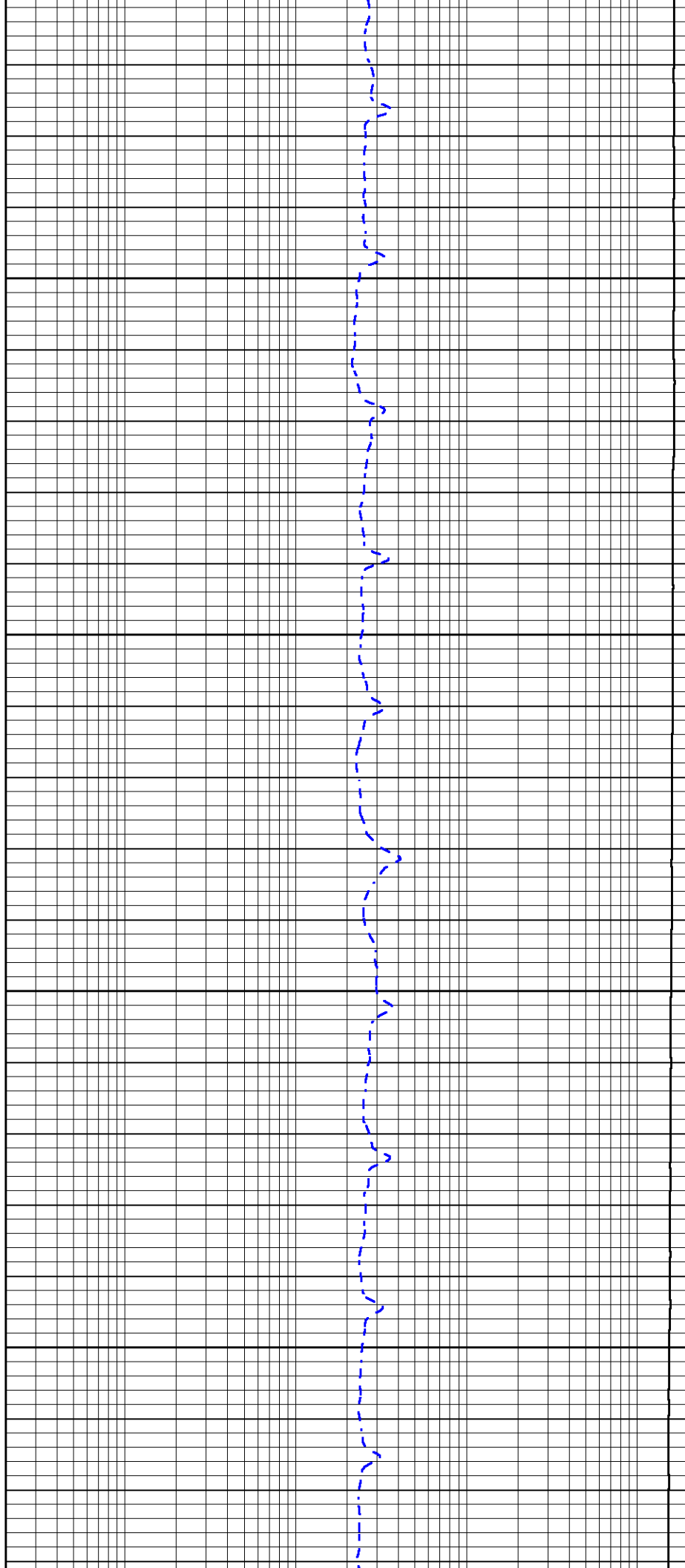


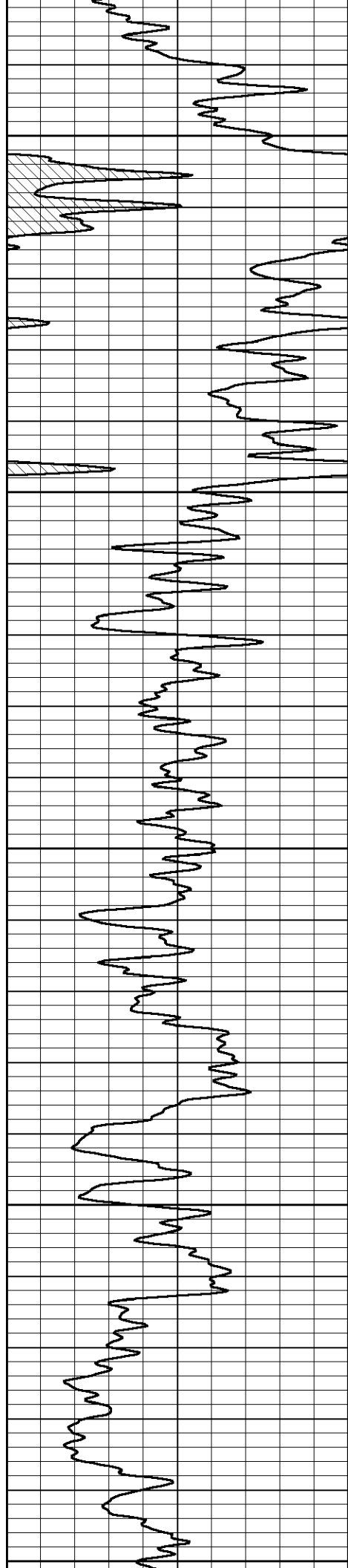
200

250

300

350





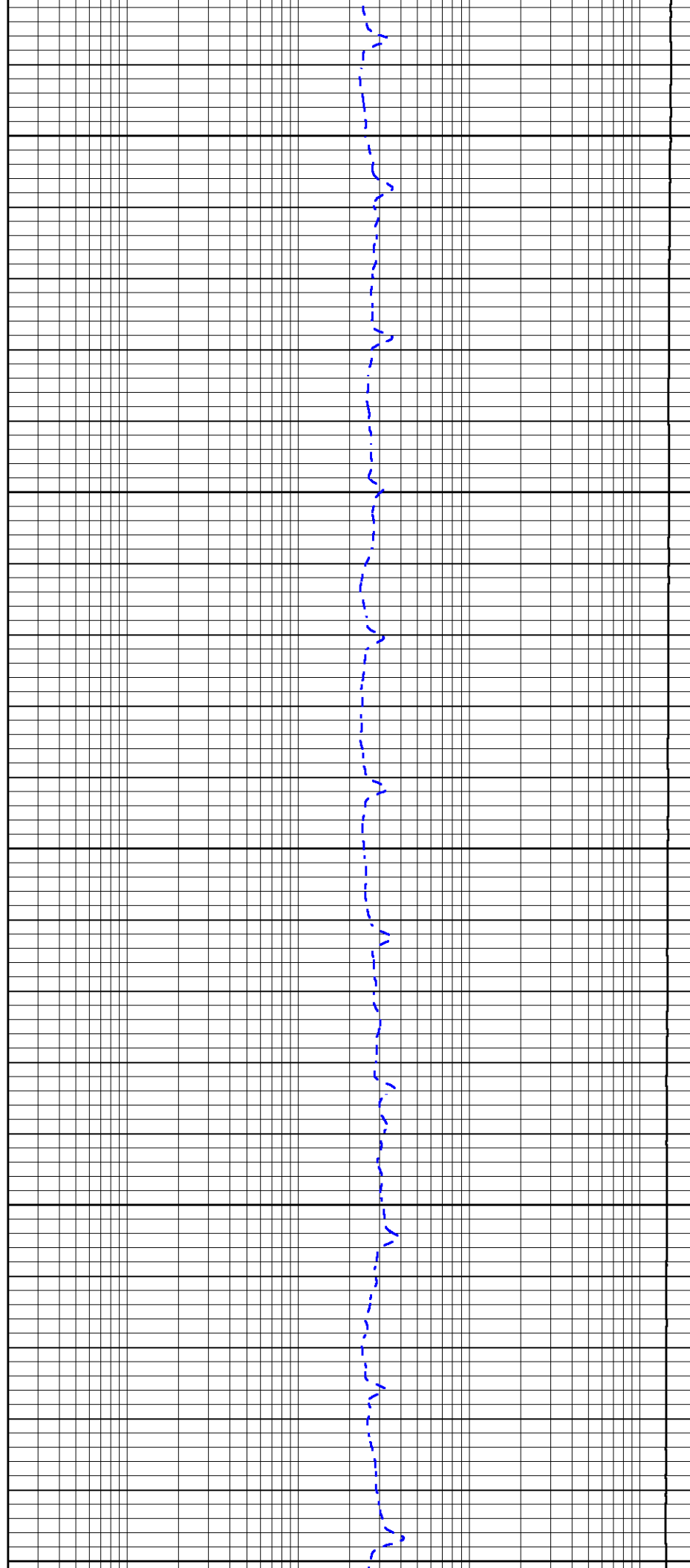
400

450

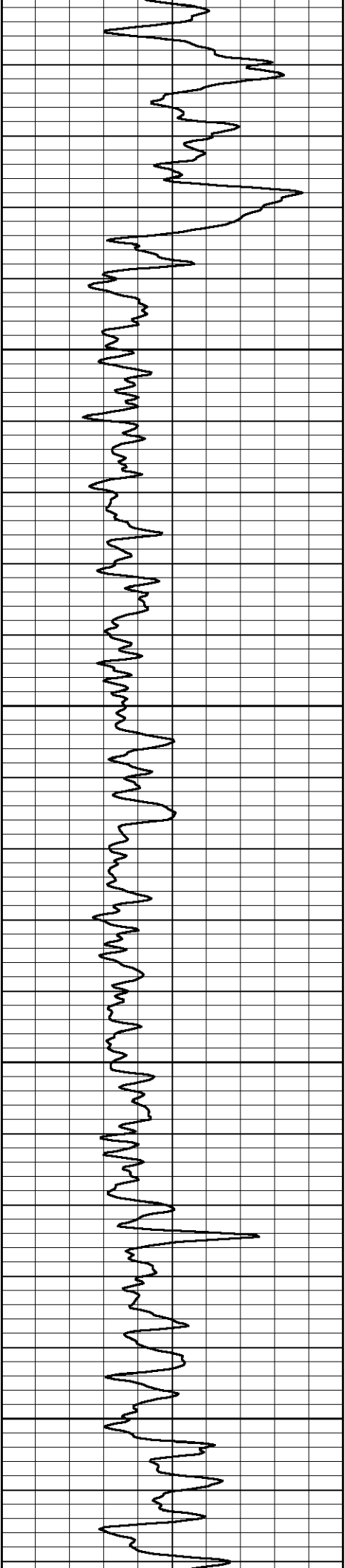
500

550

600





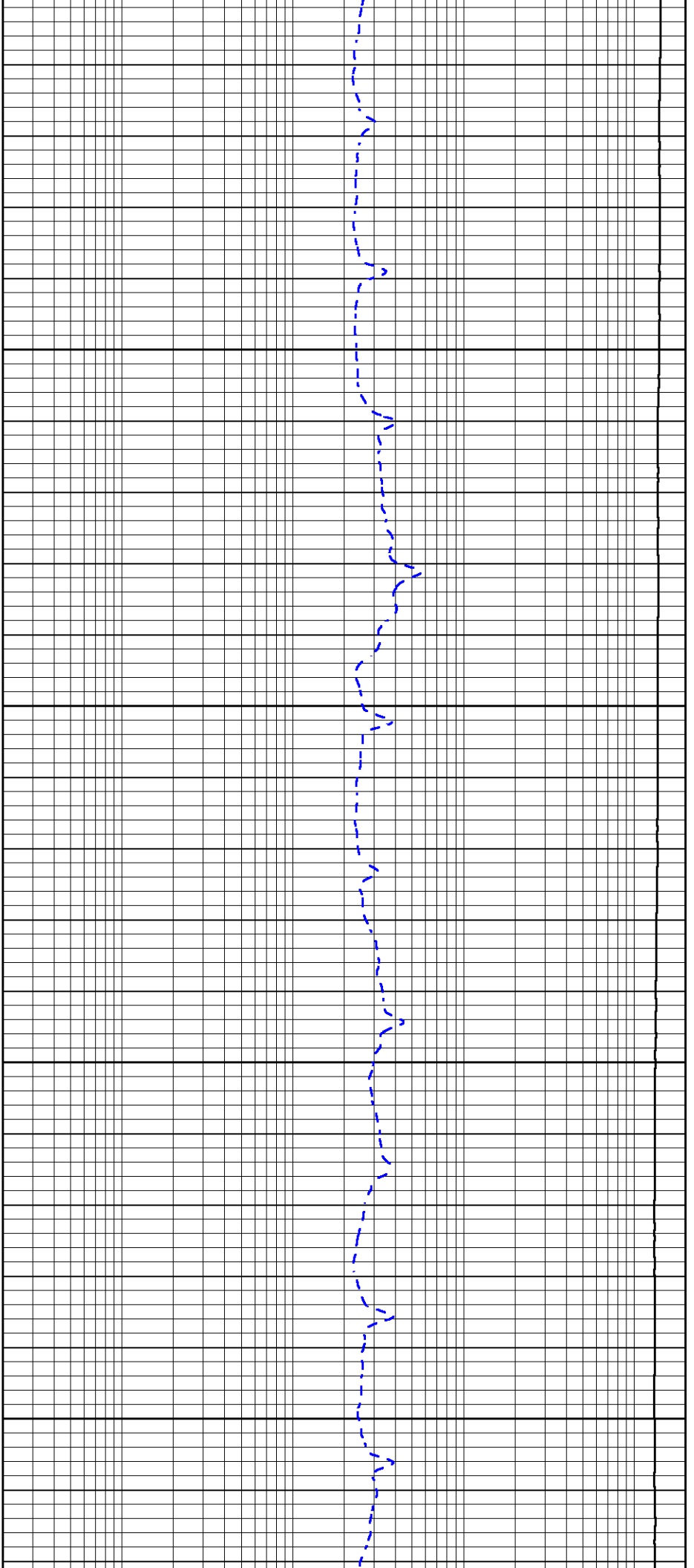


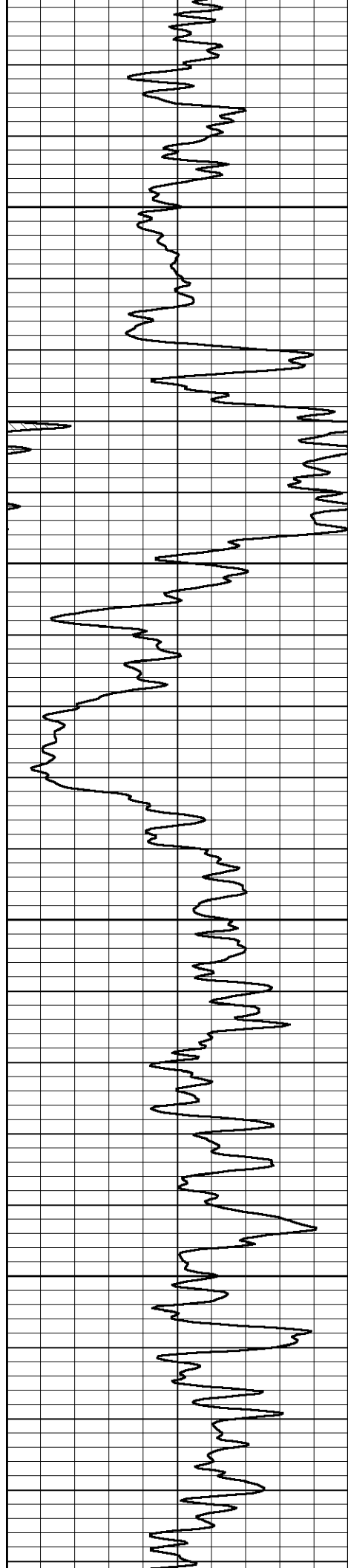
650

700

750

800



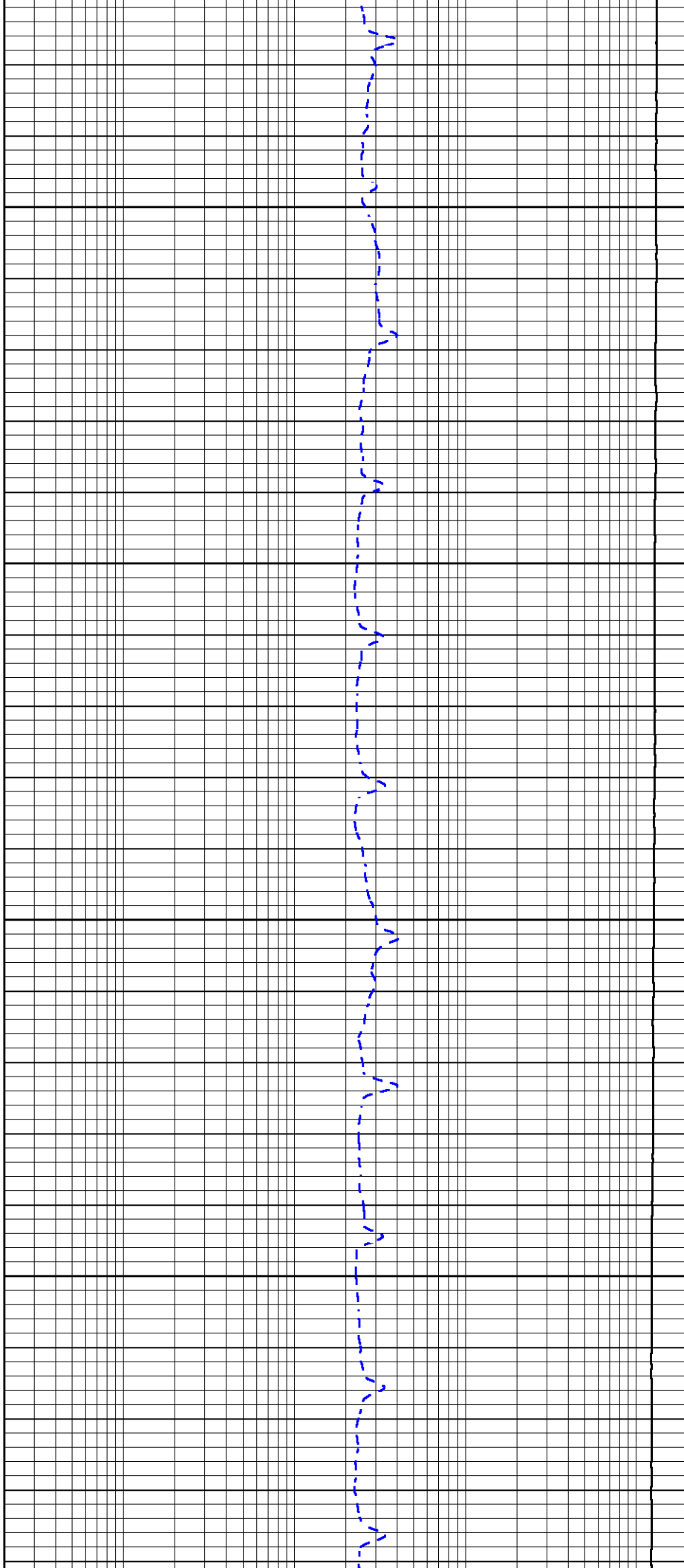


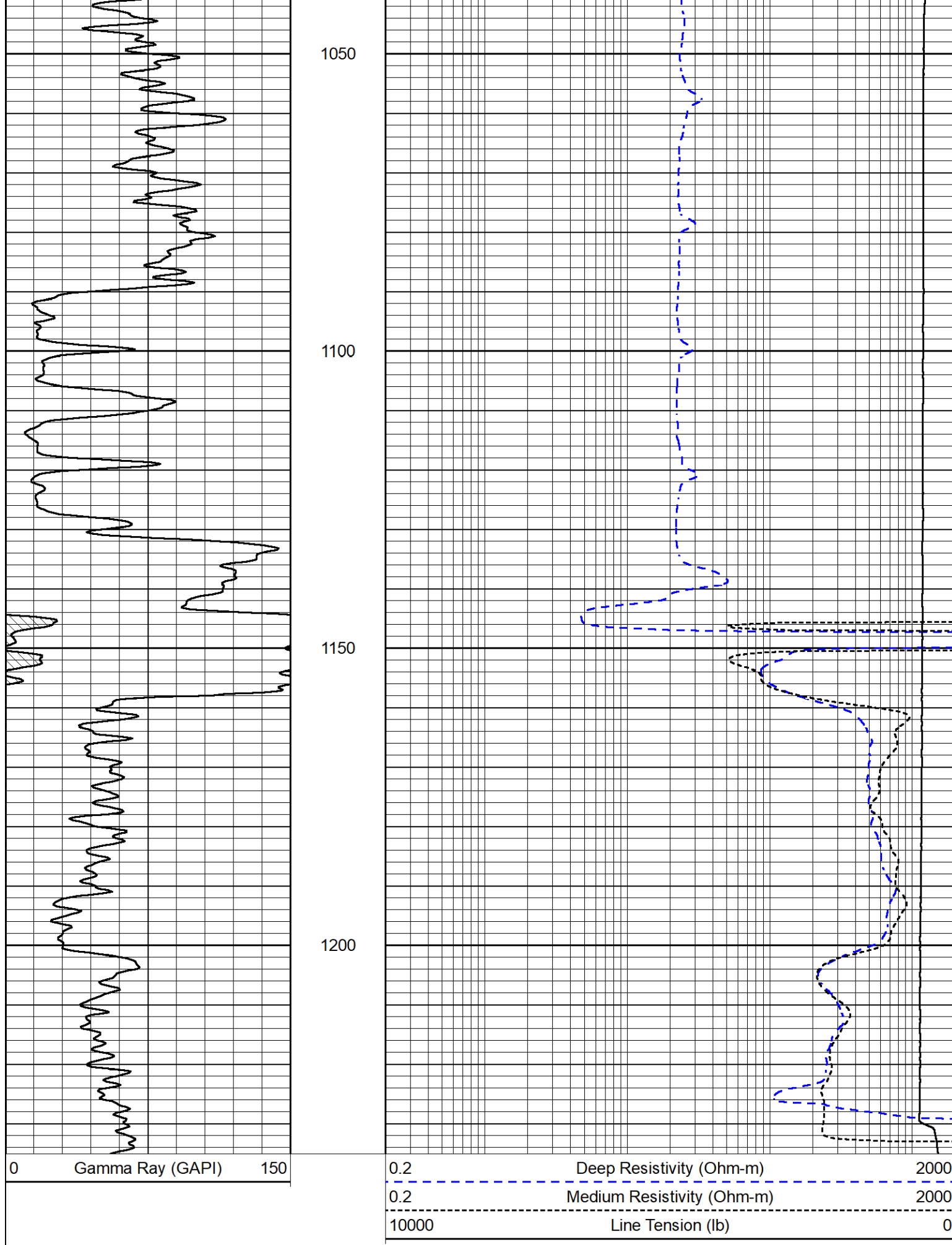
850

900

950

1000





Database File	bnl_jackson 02 I4 3154.db
Dataset Pathname	dil/pass4.1
Dataset Creation	Sun May 04 11:21:09 2025

## Dual Induction Calibration Report

Serial-Model:	505-M&W
Surface Cal Performed:	

Loop:	Readings		References			Results	
	Air	Loop	Air	Loop		m	b
Deep	68.570	638.100	0.000	255.800	mmho/m	0.550	-56.000
Medium	184.288	716.191	0.000	255.800	mmho/m	0.450	-55.000

Gamma Ray Calibration Report
------------------------------

Serial Number:	105
Tool Model:	M&W
Performed:	Mon Aug 7 20:46:01 2023

Calibrator Value:	500.0	GAPI
-------------------	-------	------

Background Reading:	24.0	cps
Calibrator Reading:	637.0	cps

Sensitivity:	0.6000	GAPI/cps
--------------	--------	----------



Company	BNL Enterprise
Well	Jackson 02 L4 3154
Field	
County	Las Animas
State	Colorado