



Scale: 10" / 100'
Measured Depth Log

Well Name JACKSON 02 L4 3154

Location SEC. 2, T31S, R54W

State COLORADO

County LAS ANIMAS

Country USA

Rig Number AWS NO. 1

API Number 05-071-09942-00

Field JACKSON RANCH

Spud Date 4/28/2024

Drilling Completed TBD

Surface Coordinates 1200' FNL, 646' FWL SEC. 2, T31S, R54W

LAT: 37.377597
LONG: -103443727

Bottom Hole Coordinates VERTICAL HOLE AS ABOVE

Ground Elevation 5612'

K.B. Elevation 5617'

Logged Interval 40 To 1143

Total Depth TBD

Formation LYONS SANDSTONE

Type of Drilling Fluid AIR DRILLING

Geologist

Name PETER KONDRAT

Company BLUE STAR HELIUM

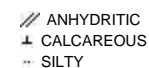
Address 6494 QUEBEC ST.
ENGLEWOOD, CO 80111

Rock Types

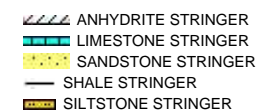


Accessories

Minerals



Stringer



Other Symbols

Engineering



Operator

Company BLUE STAR HELIUM

Address LEVEL 8, LONDON HOUS
216 ST. GEORGE TERRACE
PERTH, WA 6000



Other

SERVICE COMPANY IMPAC EXPLORATION SERVICES, INC.
1501 LERA DRIVE, SUITE 2

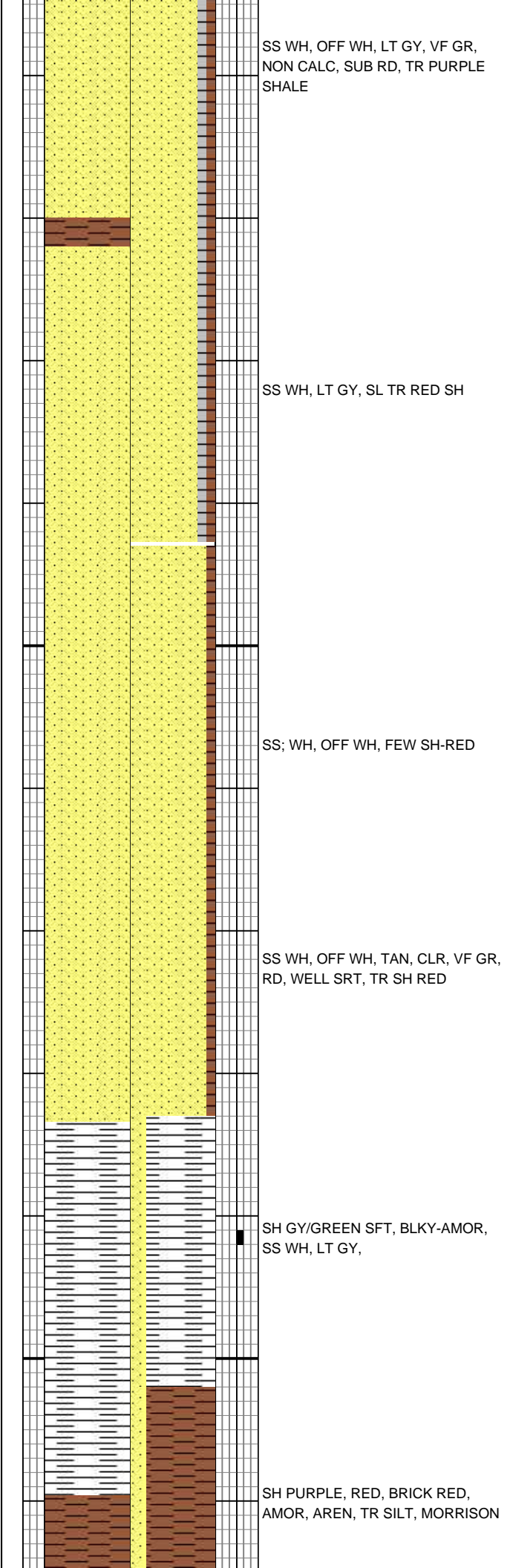
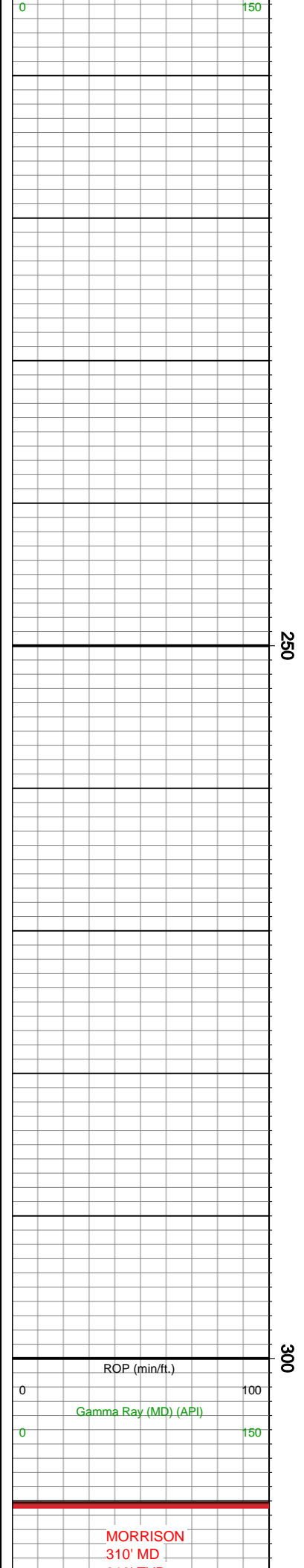
1501 LERA DRIVE, SUITE 3
WEATHERFORD, OK 79096

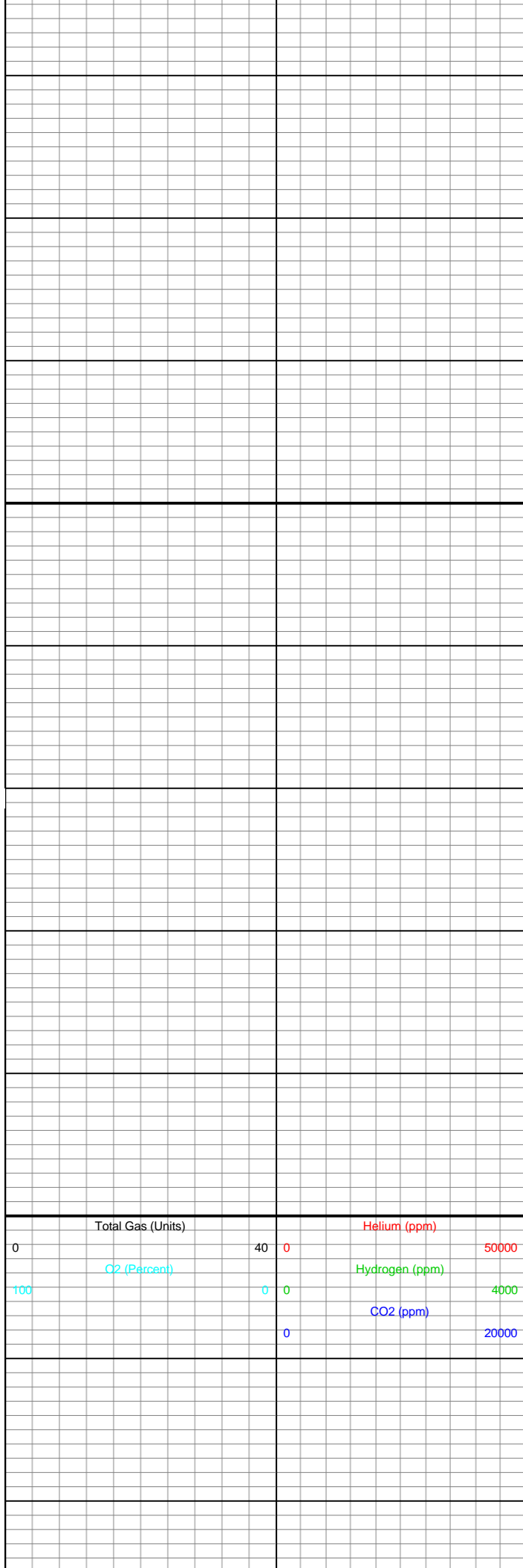
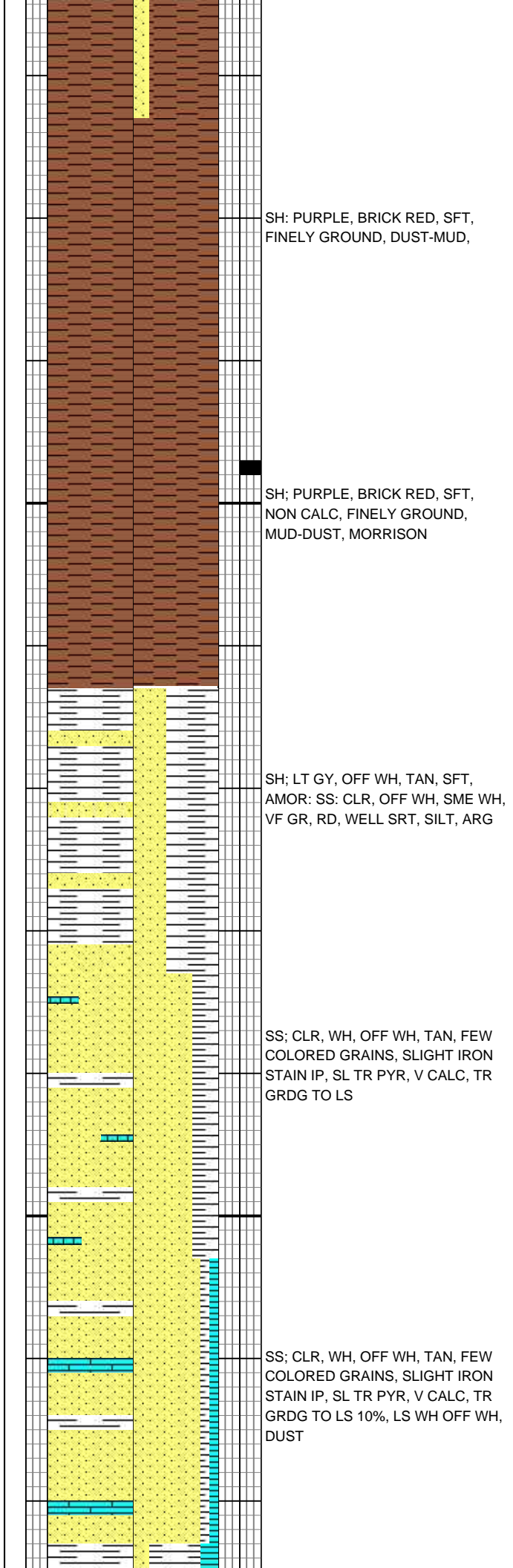
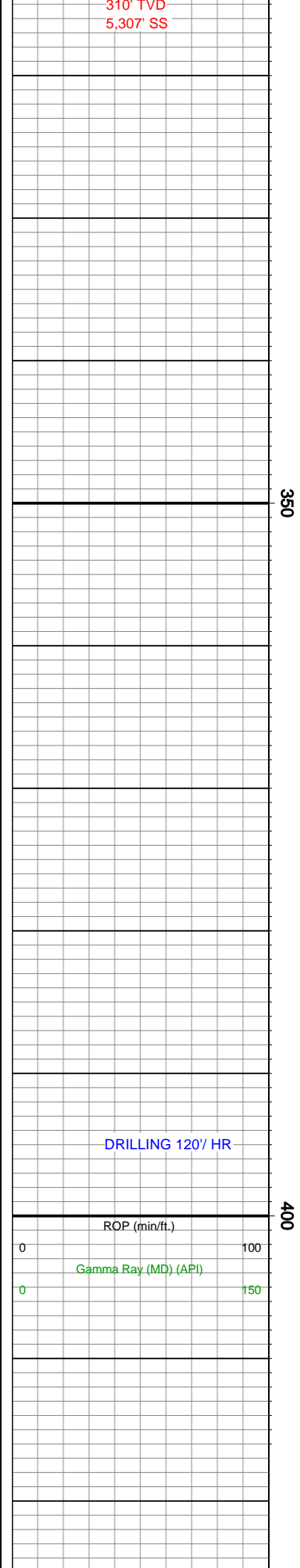
SERVICE 1 MAN SERVICE
SERVICE BEGINING: 4/29/2025
SERVICE ENDING: 4/30/2025

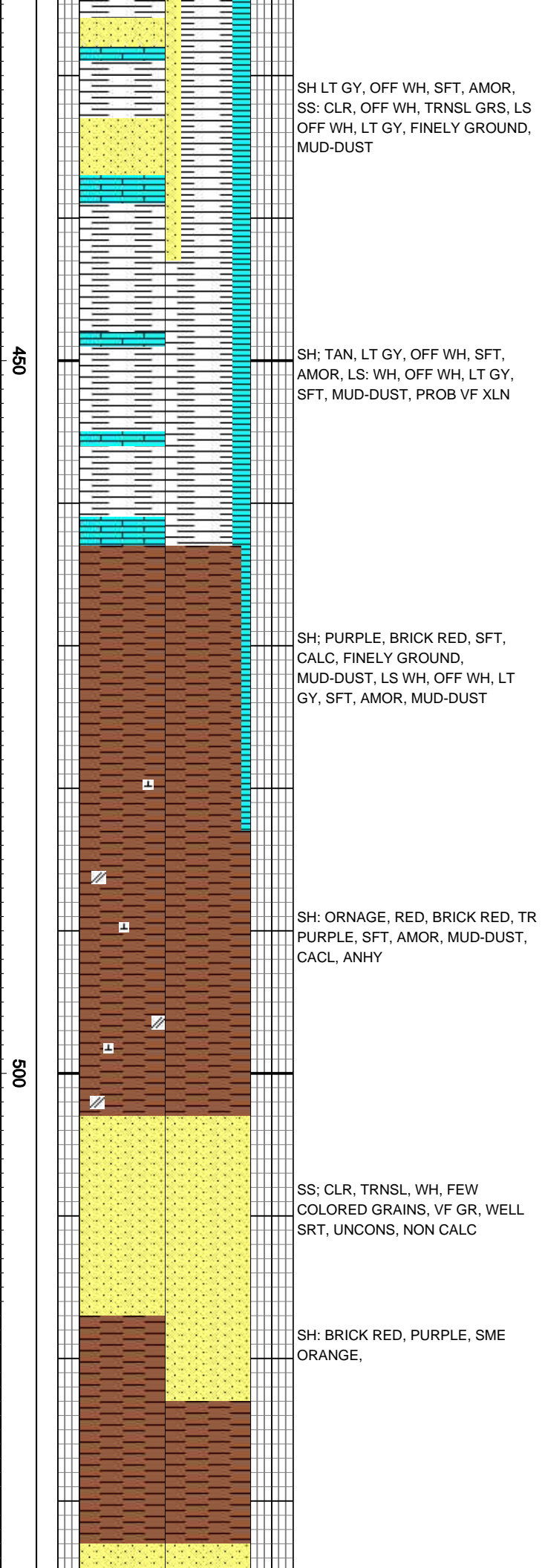
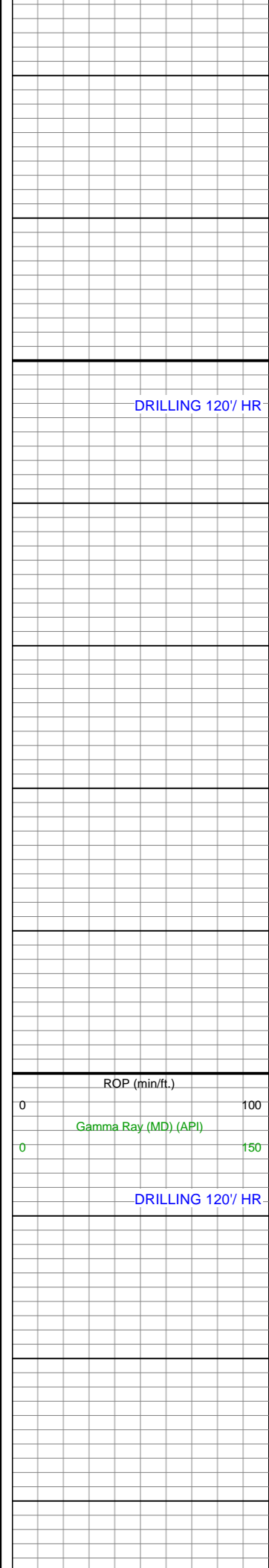
INSTRUMENTS UNIT 403

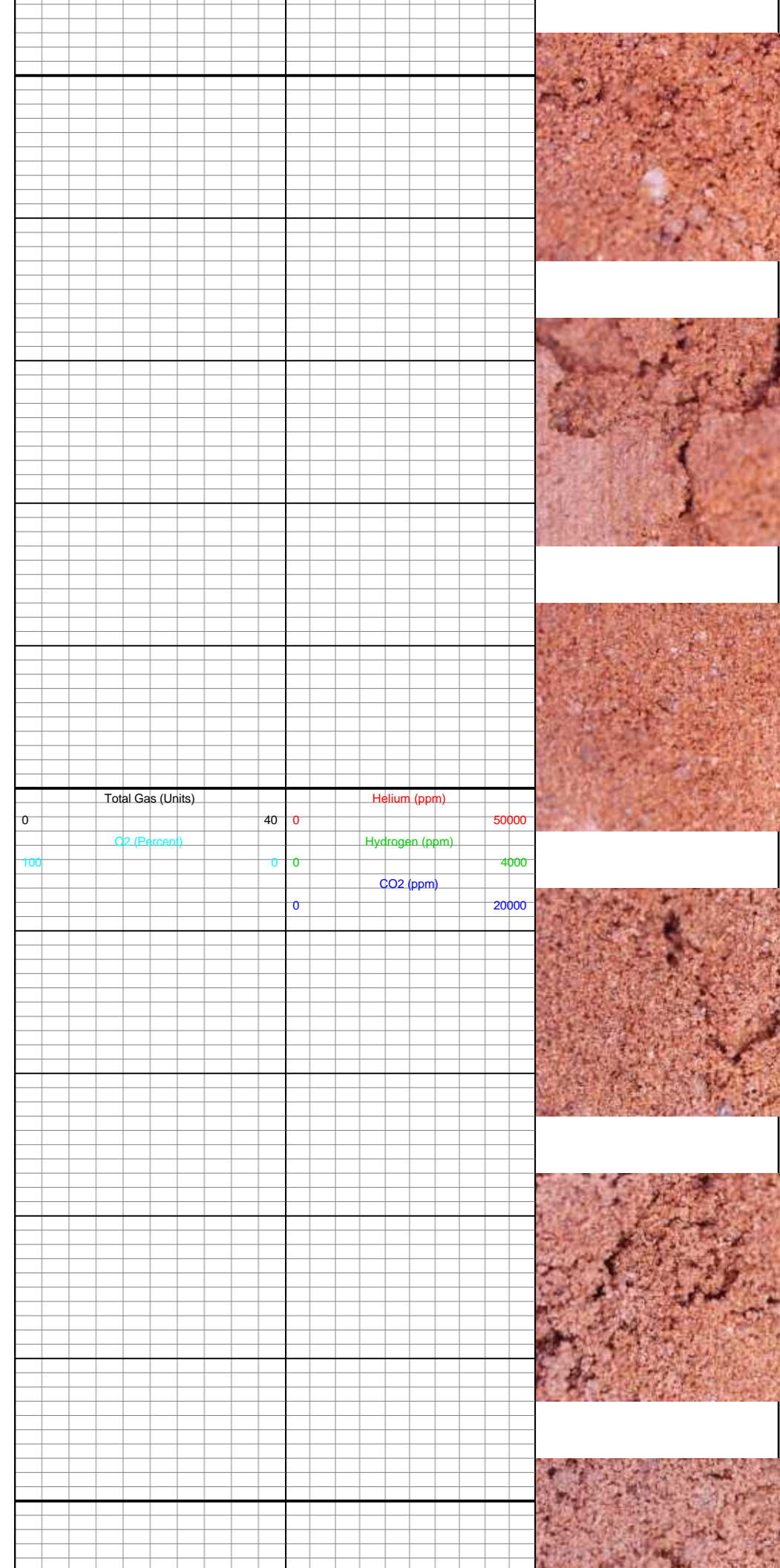
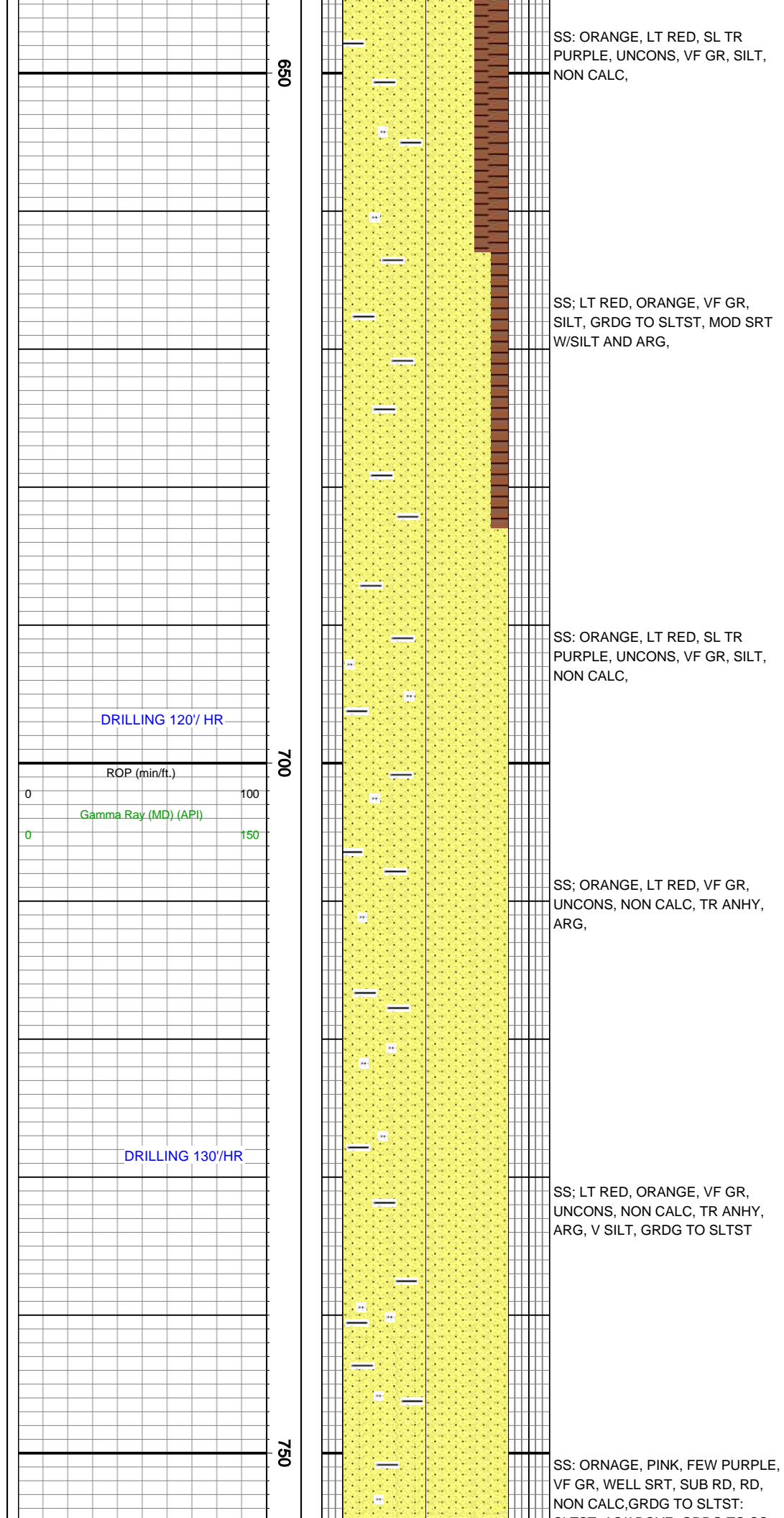
LOGGER SCOTT OLSON 517-614-1715

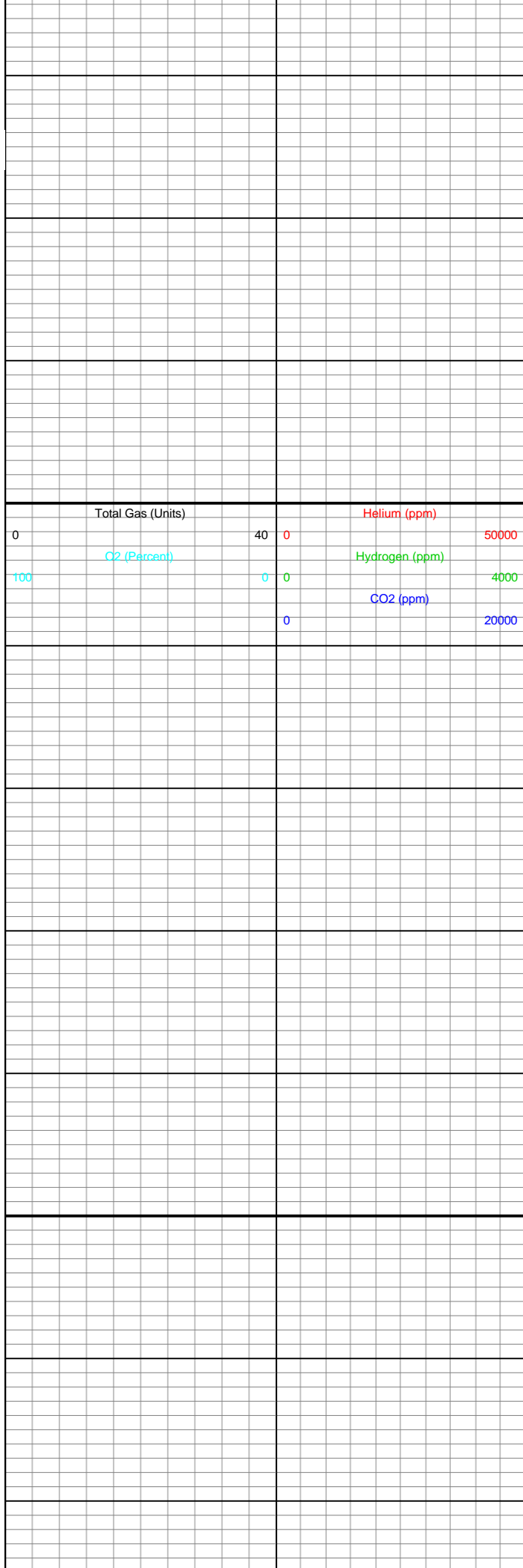
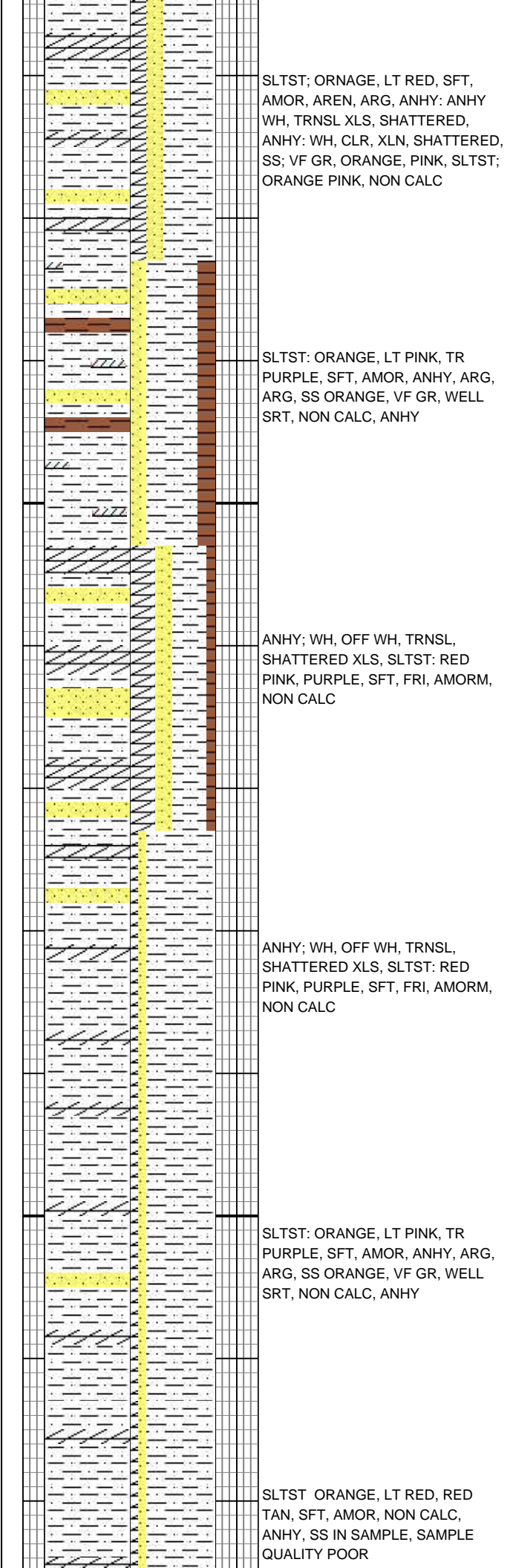
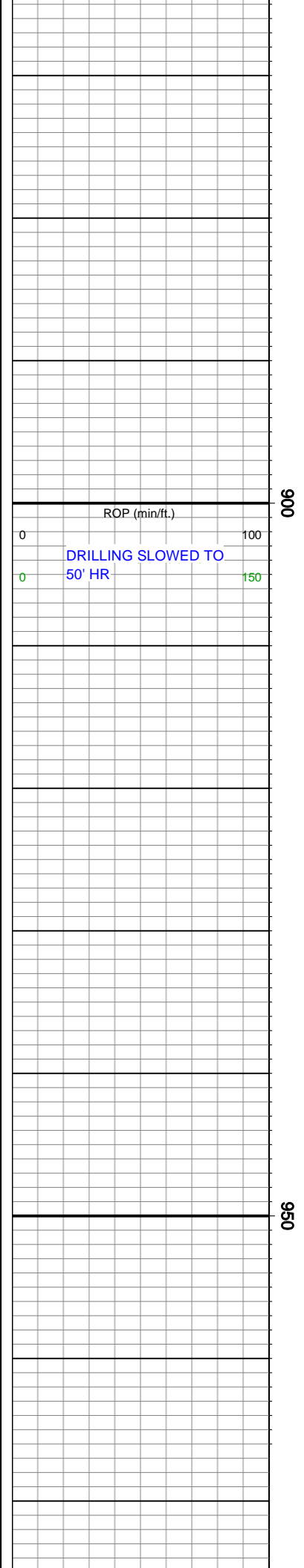
Drilling Info	ROP & Gamma Ray		Depth	Porosity DT Events	Lithology	% Lith	Fluorescence	Cut	Geologic Descriptions	Total Gas				Absolute Inorganics			Images	
	ROP	Gamma Ray (MD)								Total Gas	C1	C2	C3	IC4	NC4	IC5		NC5
9 5/8" CASING @ AT 40'; J-55, 20#	ROP (min/ft.)								IMAPAC PERSONEL ARRIVE 04/29/2025 12:15 hrs, RIG UP, BEGIN LOGGING OPERATIONS, 04/30/2025	Total Gas (Units)								
	Gamma Ray (MD) (API)																	

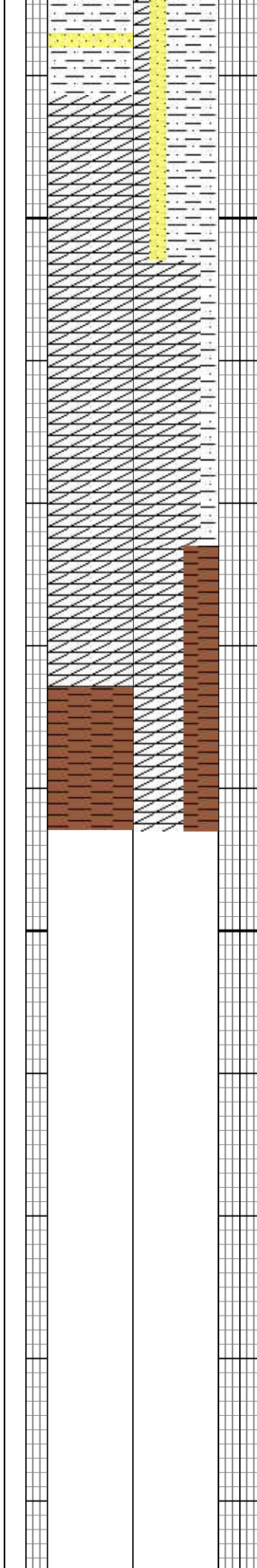
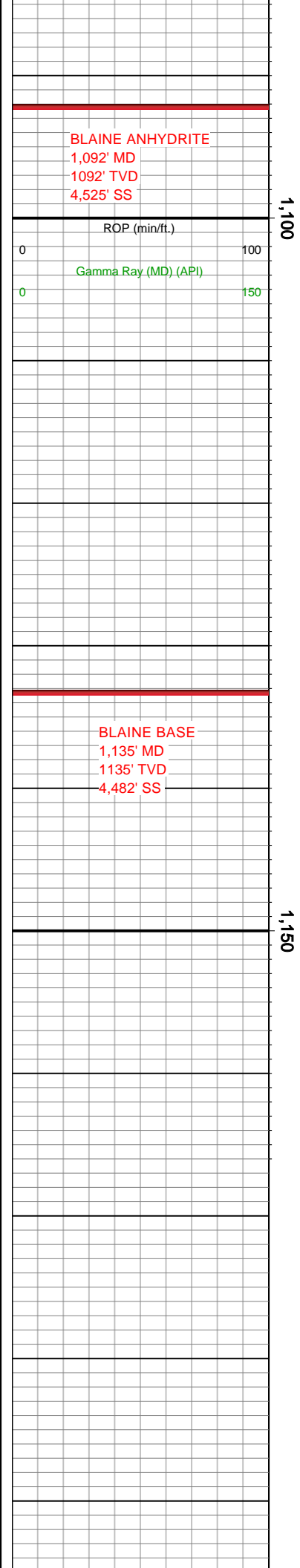












SS WH -OFF WH FREE GRAINS, VF GR

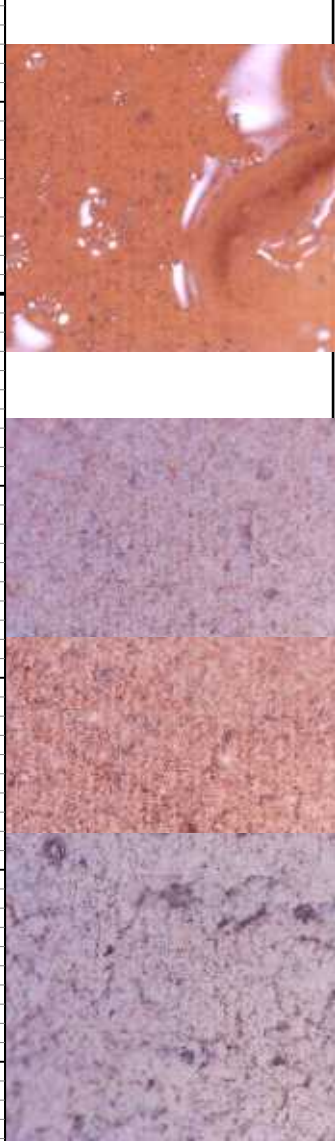
ANHY: WH, OFF WH, LT GY, SHATTERED XLS,

ANHY: WH, OFF WH, LT GY, SHATTERED XLS, FINELY GROUND

SH: DK RED, BRICK RED, FEW PURPLE, DUST,

CASING TD AT 1143'
7: 35 MDT , 4/30/2025

Total Gas (Units)			
0	40	0	50000
CO2 (Percent)			
100	0	0	4000
Helium (ppm)			
Hydrogen (ppm)			
CO2 (ppm)			
0			
20000			



[illegible]

--	--

[illegible]