

1:240

MD Log

LWD

Stand Alone WPR



ALTIITUDE
ENERGY PARTNERS

<div>Country : USA Field : Wattenburg Location : 40.786018 : -103.988661 Well : Wildhorse 04-0401 Company : Fundare Resources Company Rig : PD 460</div>				<div>Company : Fundare Resources Company Rig : PD 460 Well : Wildhorse 04-0401 Field : Wattenburg County/Parish : Weld State/Province : CO Country : USA Well ID : 05-123-52889</div>			
LOCATION				Other Services:			
Latitude : 40.786018 Longitude : -103.988661 Pawnee							
Sect: 4 Twp: 9N Range: 59W							
Permanent Datum : MSL Elevation: 5129				Elev. KB : 5129 DF : 5129 GLWD : 5109			
Log Measured From: RKB							
<div>Depth Logged : 2162 to : 6460 Date Logged : 04-03-2025 to : 04-04-2025 Total Depth MD : 11179.00 TVD : 6389.5 Spud Date : 04-02-2025</div>				<div>FINAL PRINT</div> <div>Job Number: AEP-RM-25063</div>			
Borehole Record (MD)				Borehole Record (MD)			
Run	Size	From	To	Run	Size	From	To
2	8.5	2159	11179				
				Casing Record (MD)			
				Size	Weight	From	To
				9 5/8		0	2159

DISCLAIMER

Altitude Energy Partners does not guarantee the accuracy or correctness of interpretations in or from this log.
Since all interpretations are opinions based on measurements Altitude Energy Partners shall under no circumstance be responsible for consequential damages or and other loss, cost or expense incurred or sustained in connection with the use of such interpretations.

LOGGING SUMMARY

Log Run	2				
Bit Run	2				
Hole Size (in)	8.50				
Sensor Suite	WPR				

Measured Depth

In Hole From	2164				
In Hole To	11179				
Log From	2160.00				
Log To	11179.00				

Date/Time

In Hole Date	2025-04-01				
In Hole Time	12:02:38				
Out Hole Date	2025-04-04				
Out Hole Time	07:00:59				
Begin Log Date	2025-04-01				
Begin Log Time	12:02:38				
End Log Date	2025-04-04				
End Log Time	07:00:58				

LWD Engineer					
Oil Company Rep	Kenny Graham				

DRILLING FLUID SUMMARY

Mud Type	OBM				
Density (lb/gal)	8.70				
Funnel Viscosity	46				

Plastic Viscosity	11				
Chlorides	59000				
Oil/Water Ratio	62/28				
Maximum Circ Temp (F)	200				

CORRECTIONS

Log Run	2				
Bit Run	2				
Start Date/Time	2025-04-01 12:03:36				
Start Depth (ft)	2153.38				
End Date/Time	2025-04-04 07:03:03				
End Depth (ft)	11179.12				

Gamma Ray Corrections

Collar Correction	2.228				
Mud Density (lb/gal)	12				
Mud Correction	1.561				
Calibration	1.35				
%K	0				

WPR Corrections

[illegible]

--	--	--	--	--	--

<i>EQUIPMENT</i>

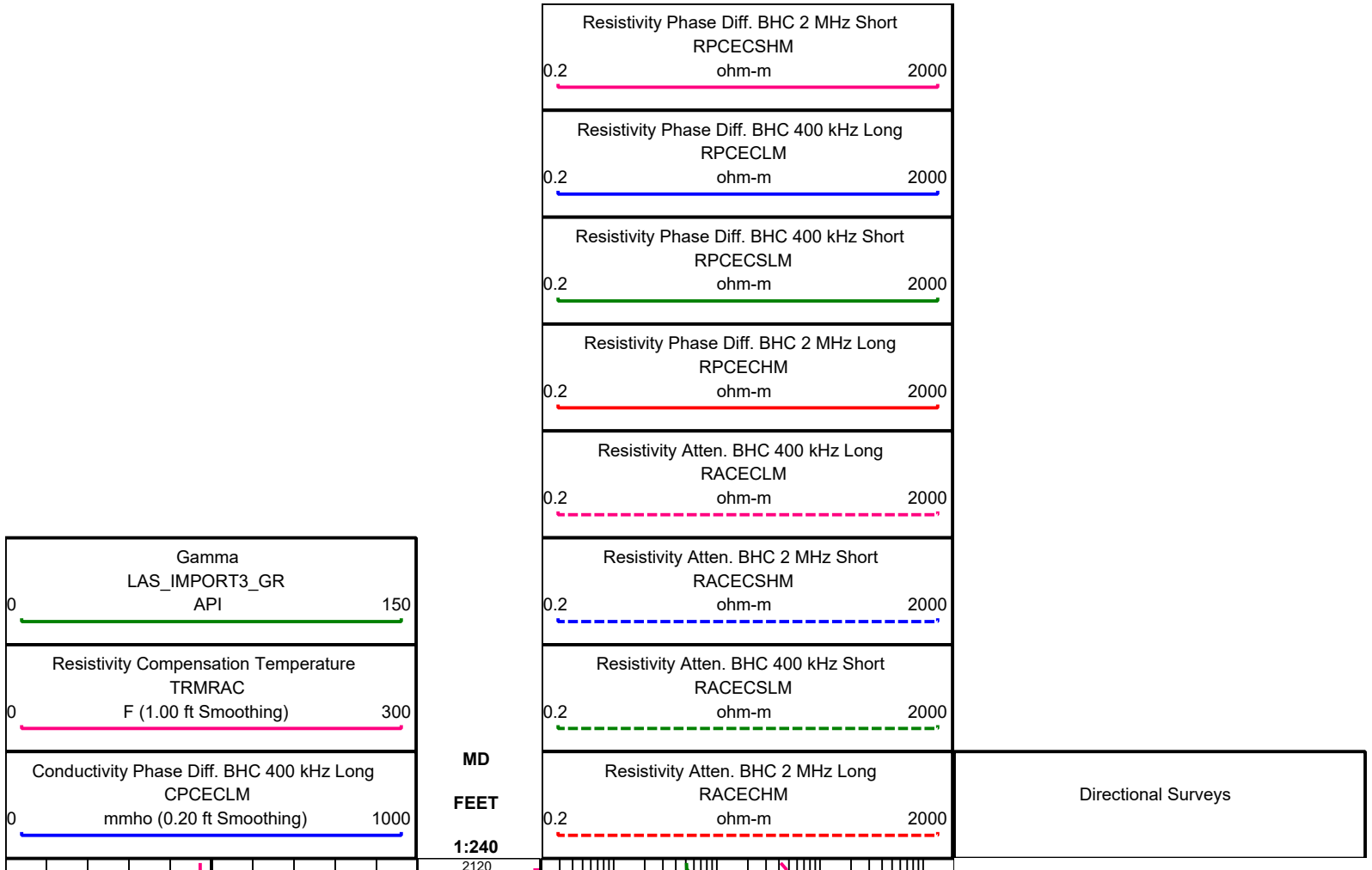
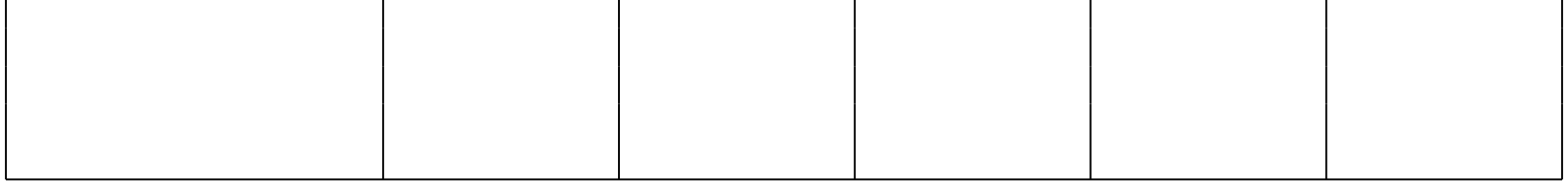
Log Run	2				
Bit Run	2				
Start Date/Time	2025-04-01 12:02:38				
Start Depth (ft)	2164				
End Date/Time	2025-04-04 07:00:59				
End Depth (ft)	11179				

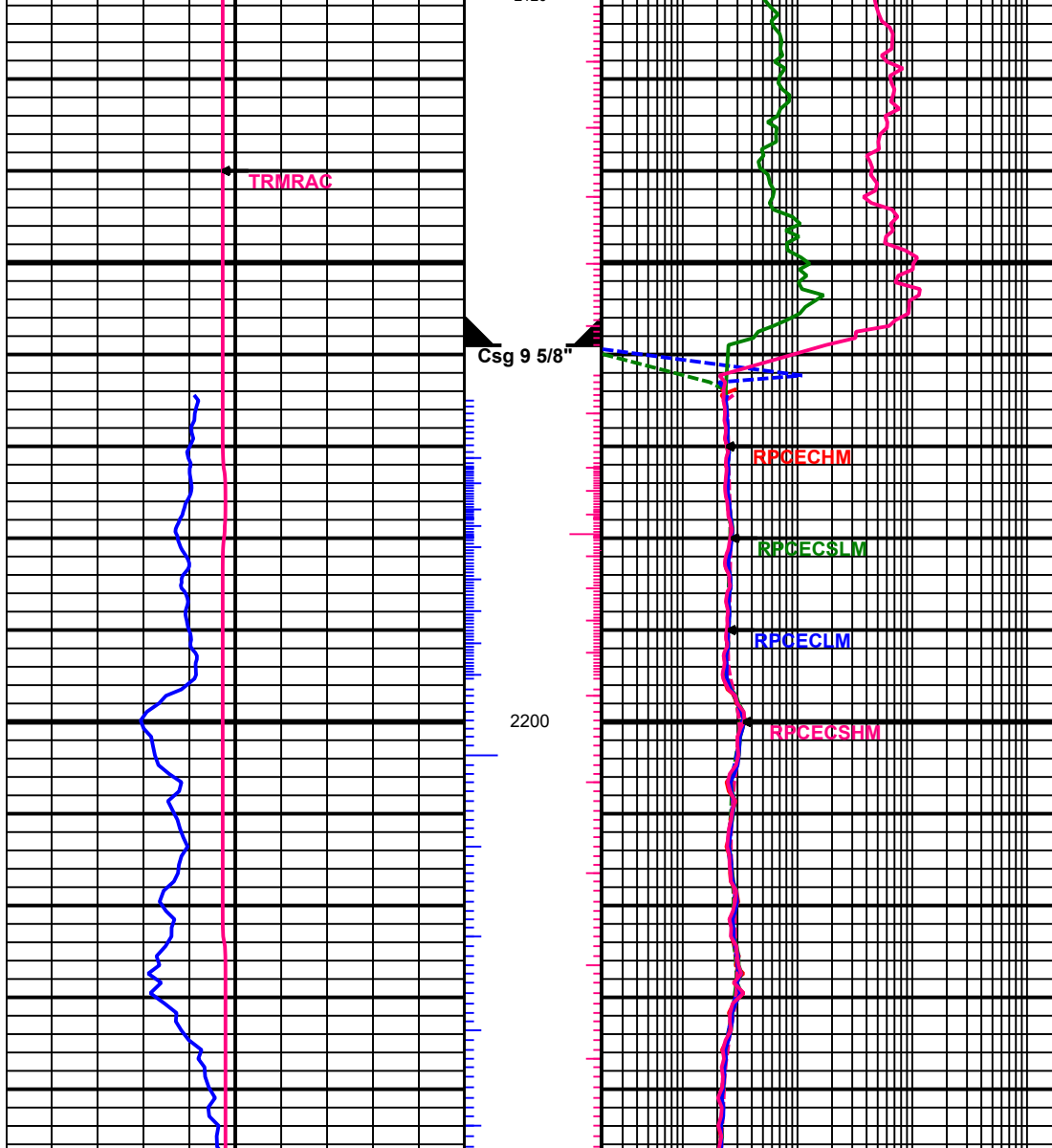
<i>Serial Numbers</i>

Surface Gear					
Flow Sub					
Pulser					
Battery 1					
Battery 2					
Turbine Alternator					
Directional Sensor					
Gamma Sensor					
WPR Sensor	134				
Vibration Sensor					

<i>Sensor Offsets To Bit</i>

Directional (ft)					
Gamma Ray (ft)					
WPR (ft)	4719.3				
PWD (ft)					
Vibration (ft)					





Csg 9 5/8"

TRMRAC

RPCECHM

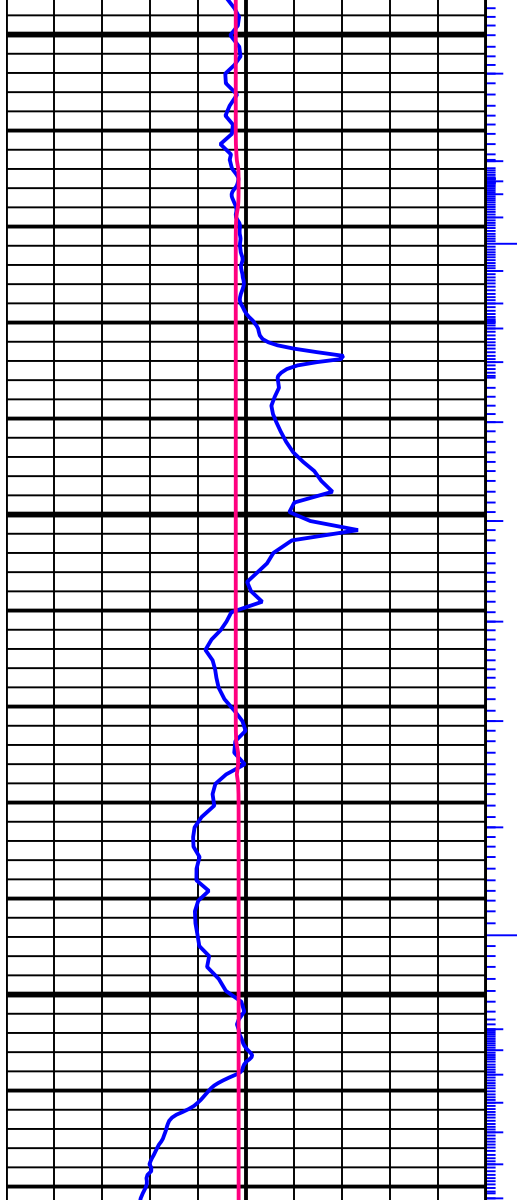
RPCECSLM

RPCECLM

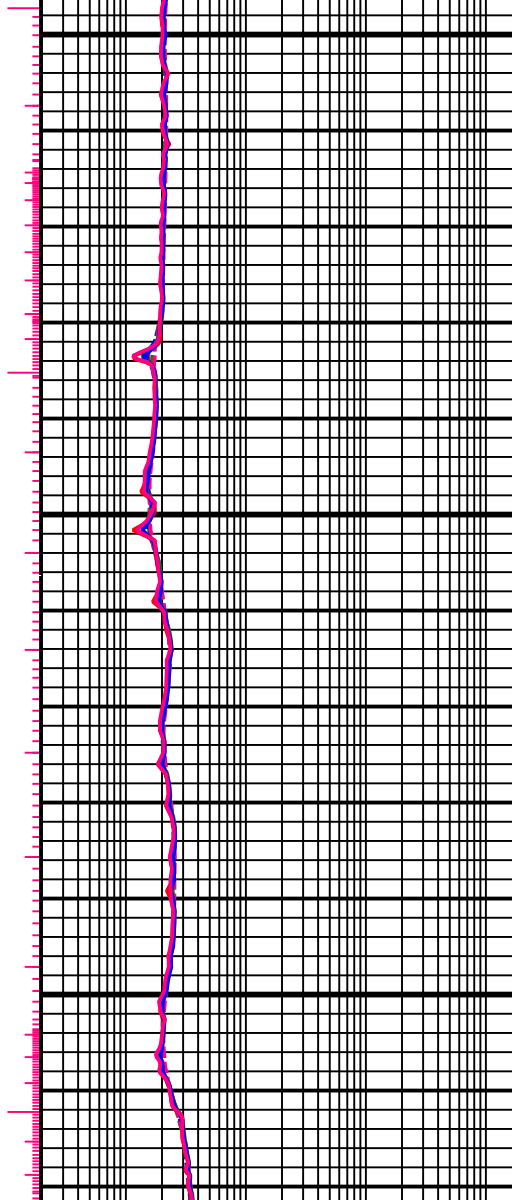
RPCECSHM

2200

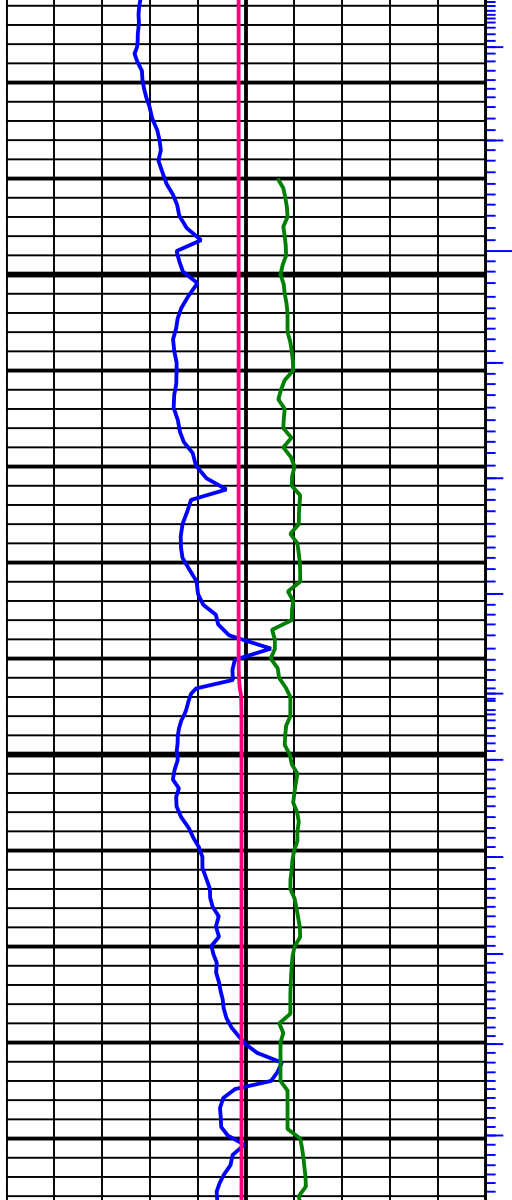
2228.00 MD, 2227.94 TVD
0.13 INC, 108.39 AZC



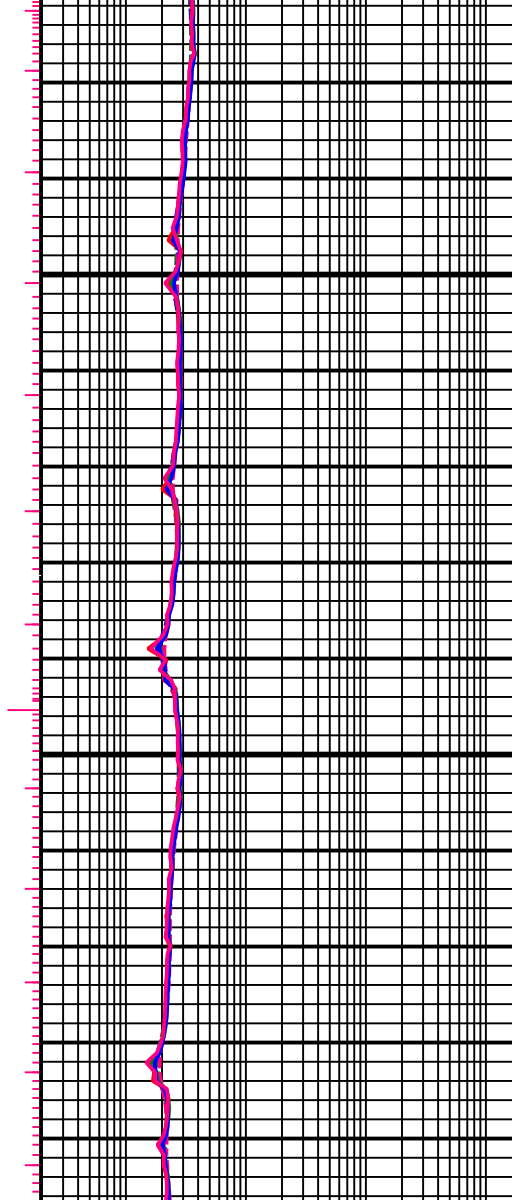
2300



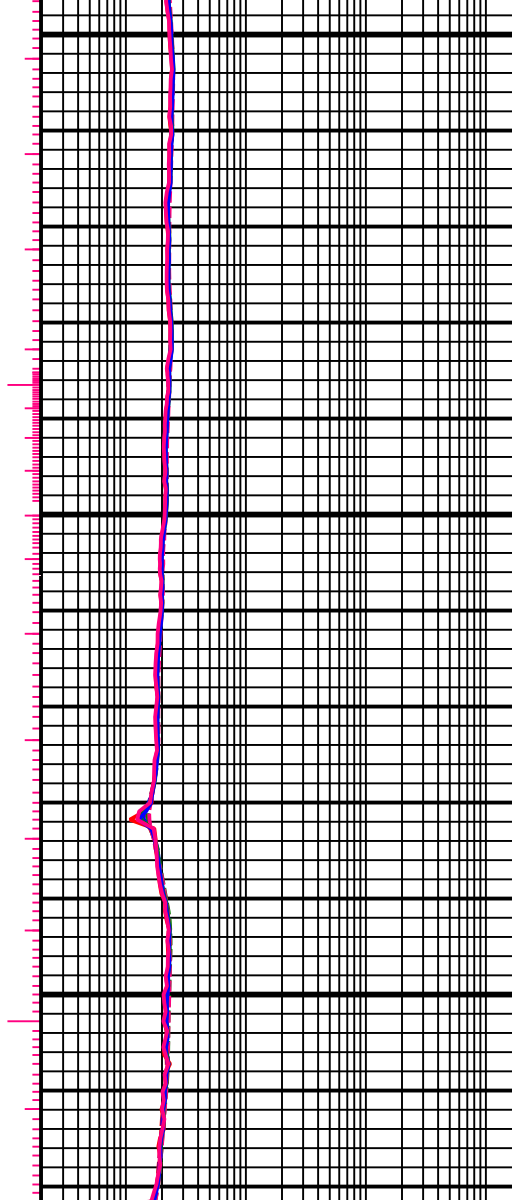
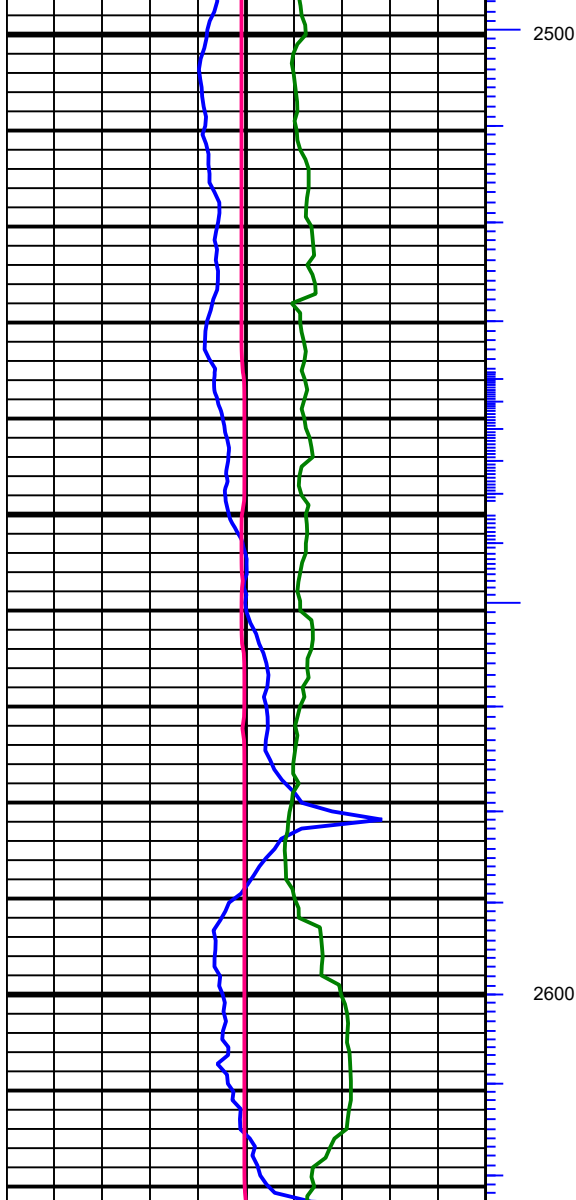
2317.00 MD, 2316.94 TVD
0.31 INC, 86.49 AZC



2400

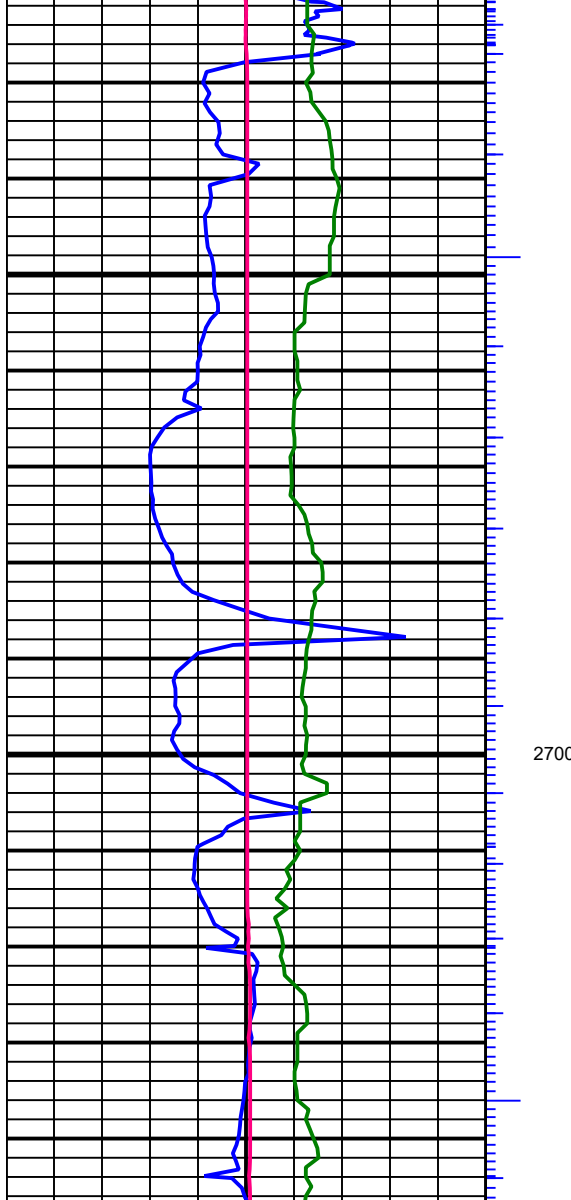


2407.00 MD, 2406.94 TVD
0.44 INC, 53.44 AZC

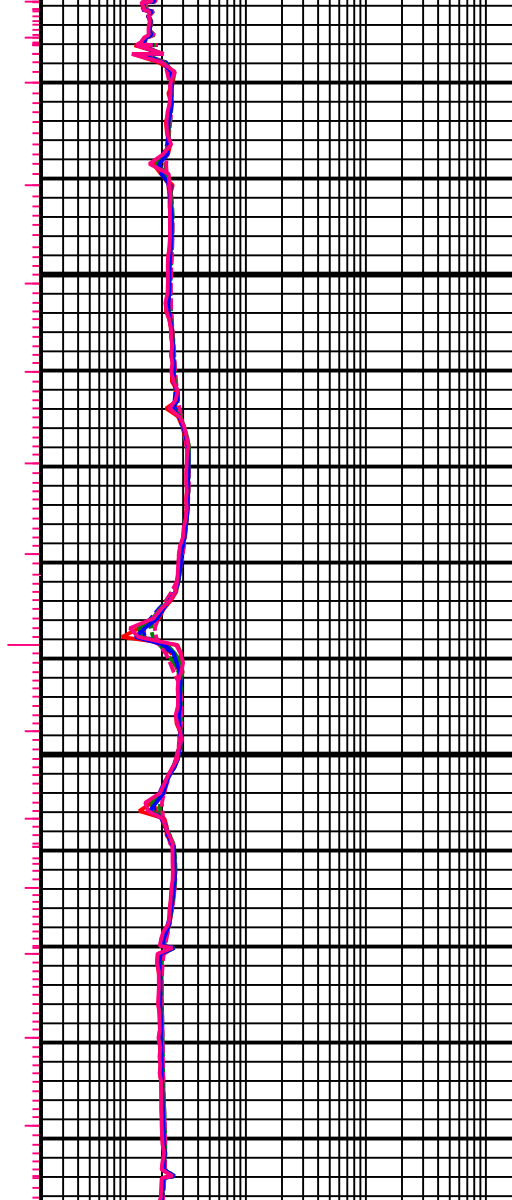


2496.00 MD, 2495.93 TVD
0.31 INC, 19.02 AZC

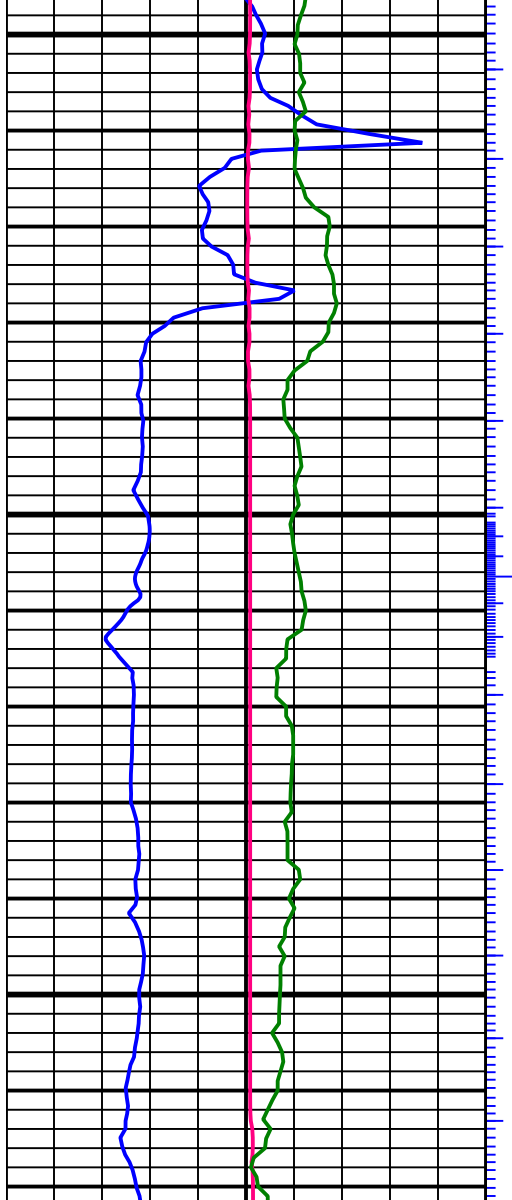
2586.00 MD, 2585.90 TVD
2.56 INC, 43.74 AZC



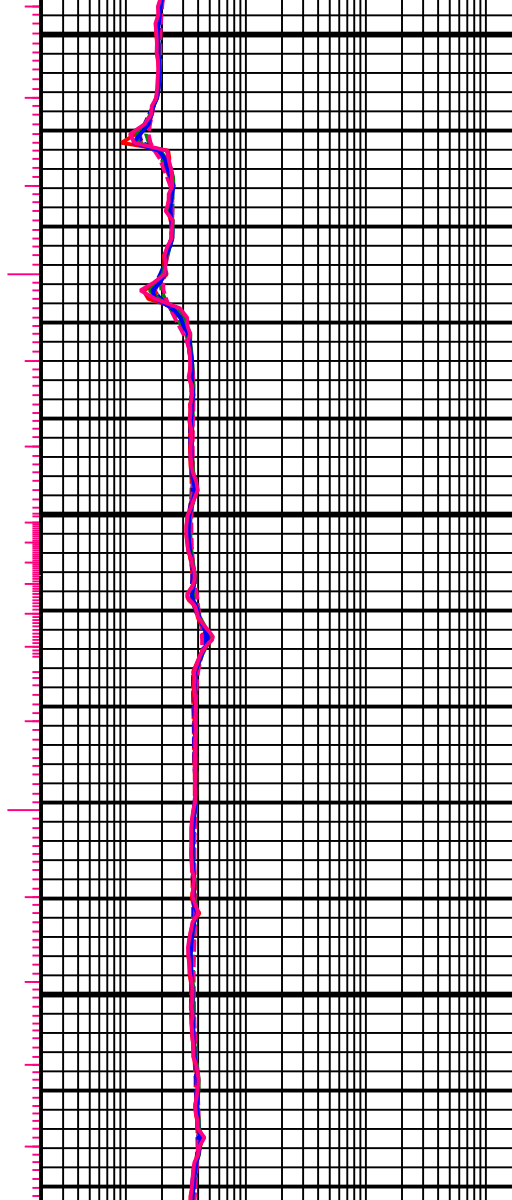
2700



2675.00 MD, 2674.80 TVD
2.96 INC, 38.19 AZC



2800



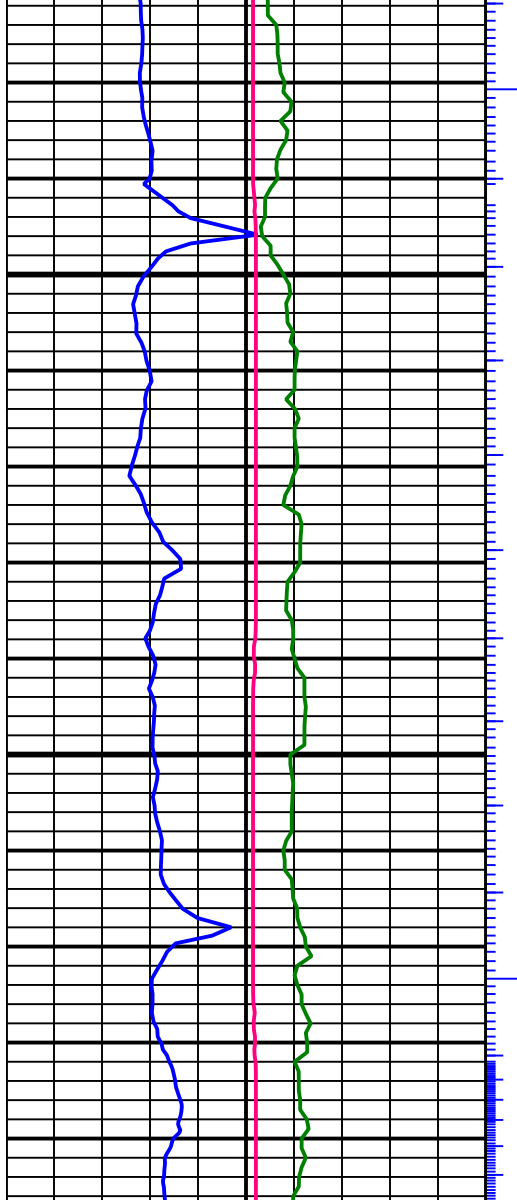
2765.00 MD,
4.68 INC,

2764.59 TVD
32.99 AZC

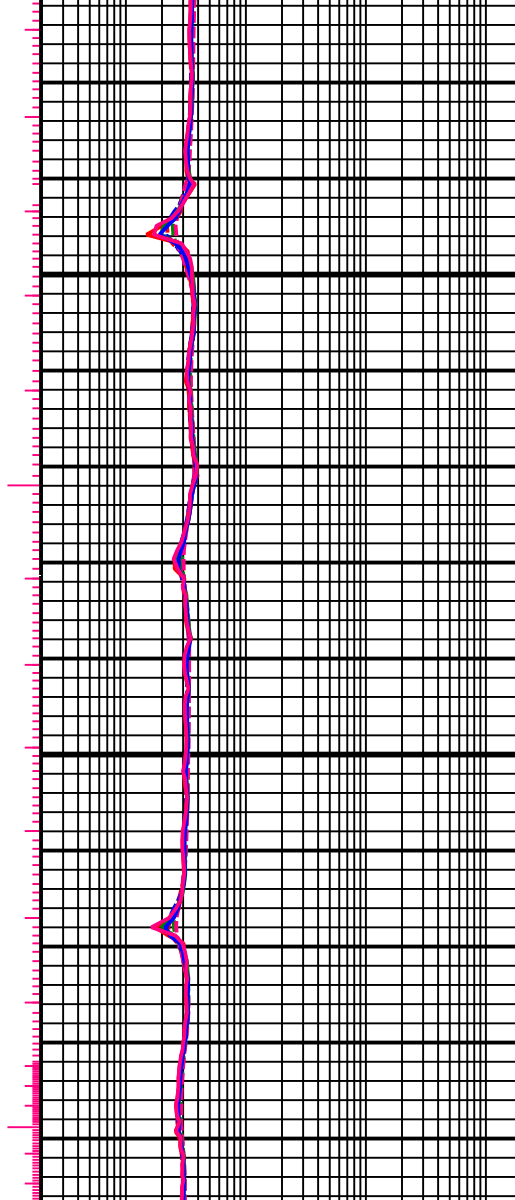


2855.00 MD,
4.55 INC,

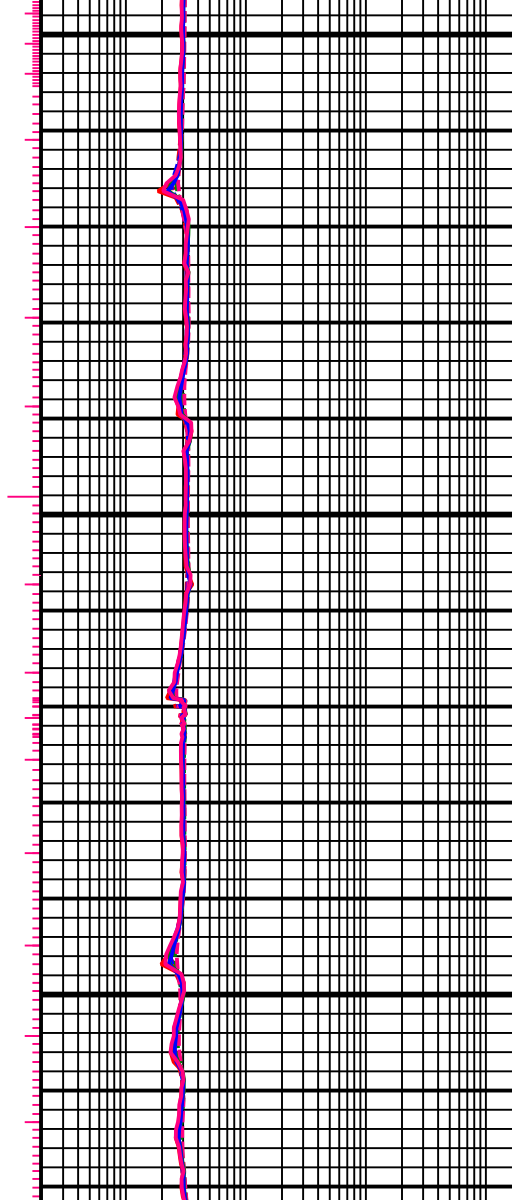
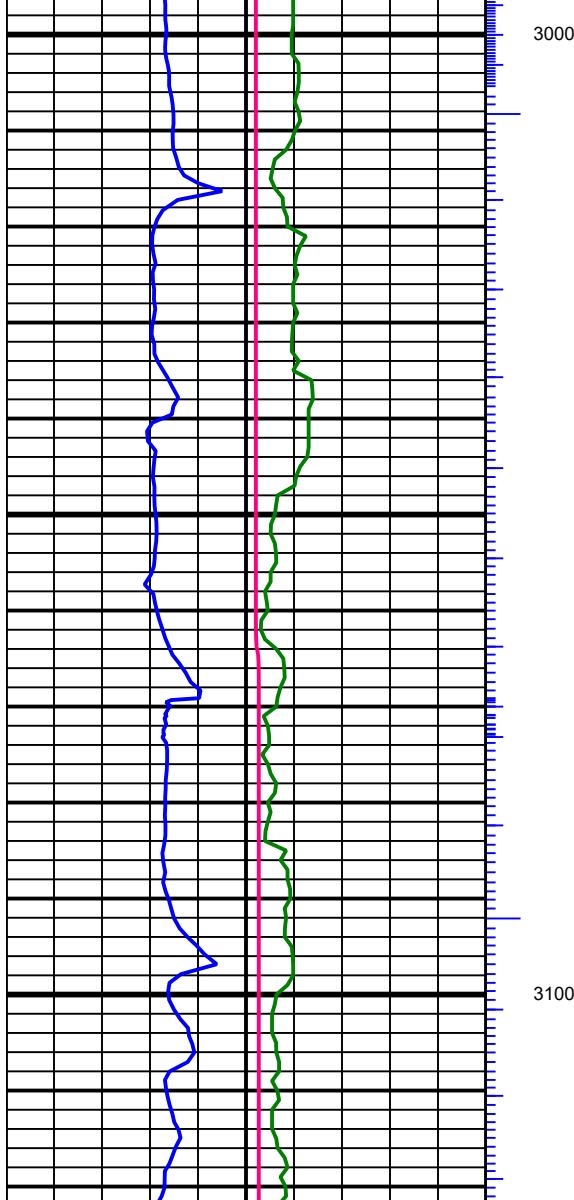
2854.30 TVD
33.08 AZC



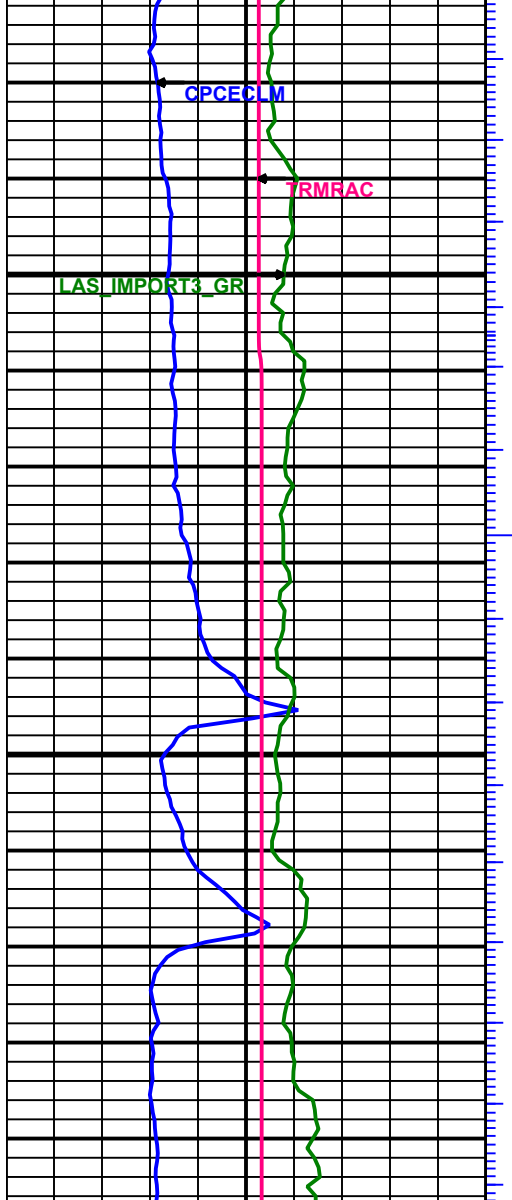
2900



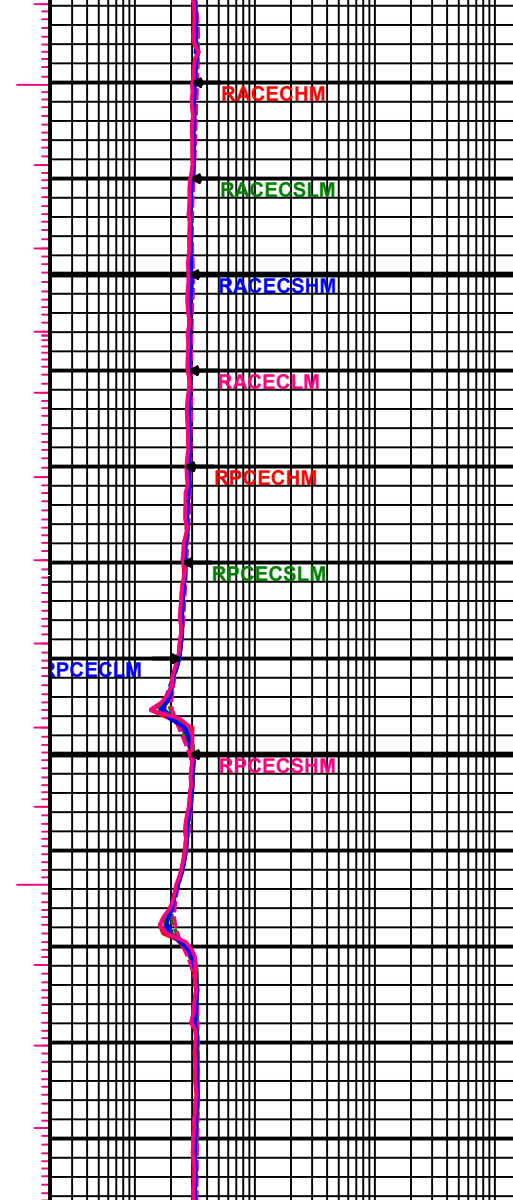
2945.00 MD, 2944.02 TVD
4.46 INC, 36.43 AZC



← 3034.00 MD, 3032.76 TVD
4.37 INC, 33.96 AZC

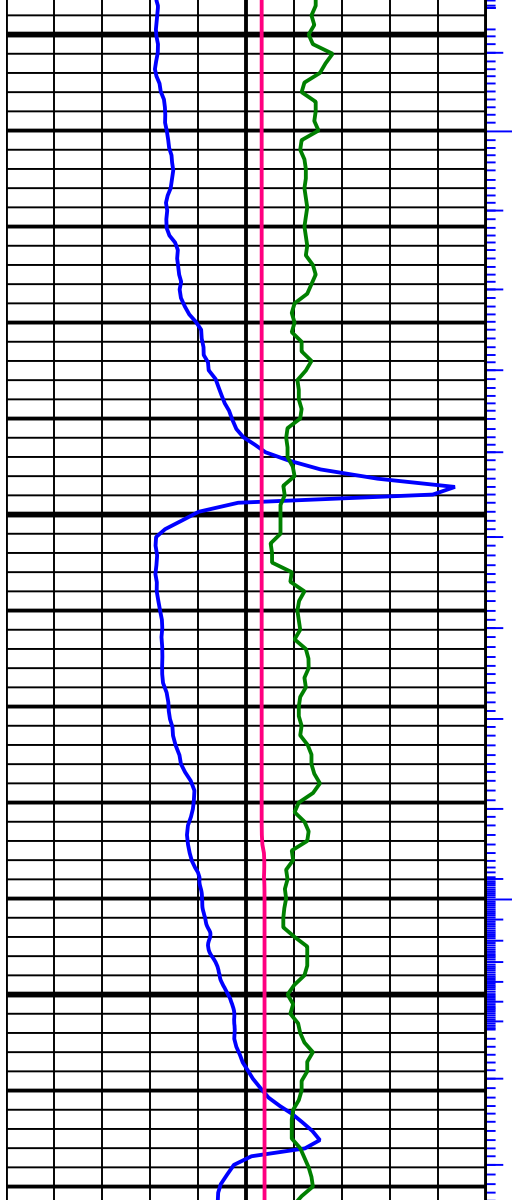


3200

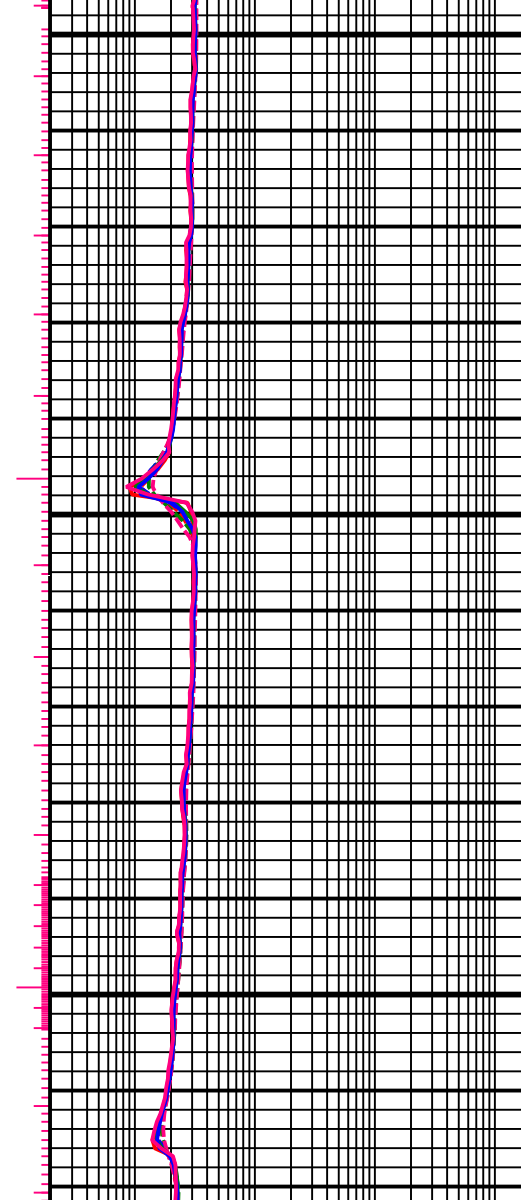


3123.00 MD, 3121.51 TVD
4.15 INC, 35.68 AZC

3213.00 MD, 3211.28 TVD
4.07 INC, 34.05 AZC

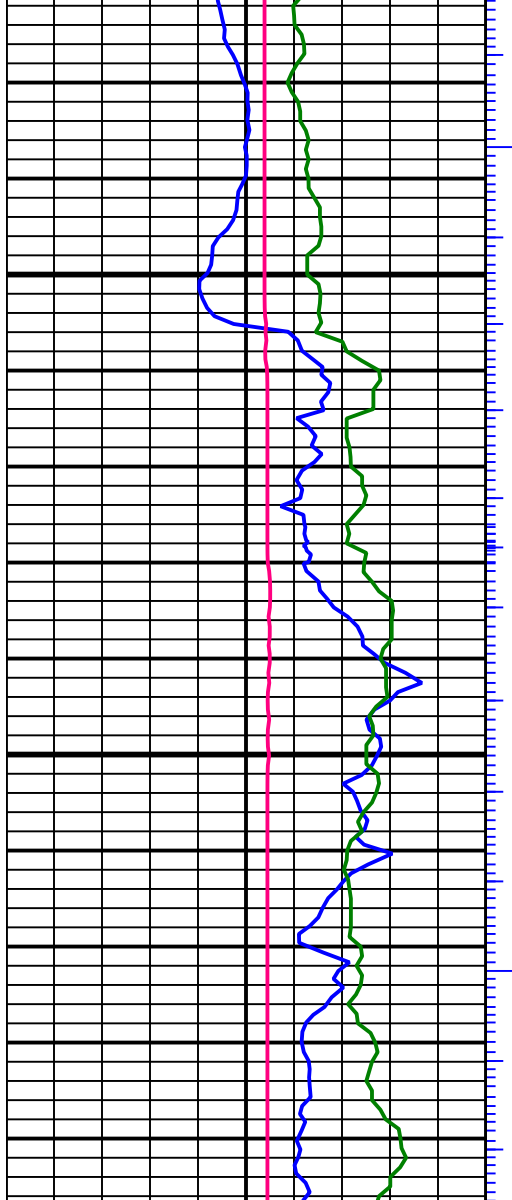


3300

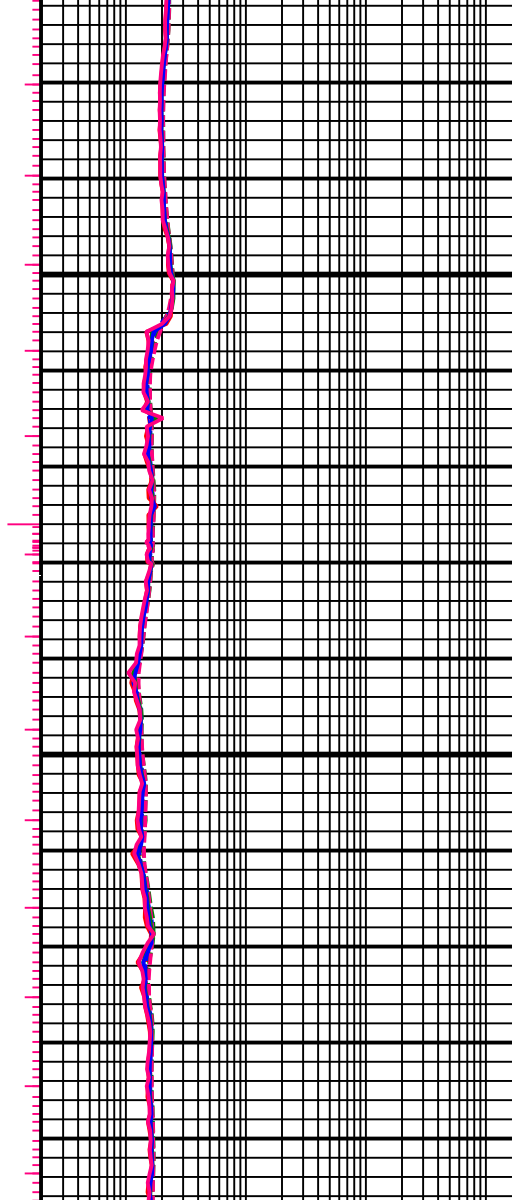


3302.00 MD,
6.76 INC,

3299.88 TVD
39.03 AZC

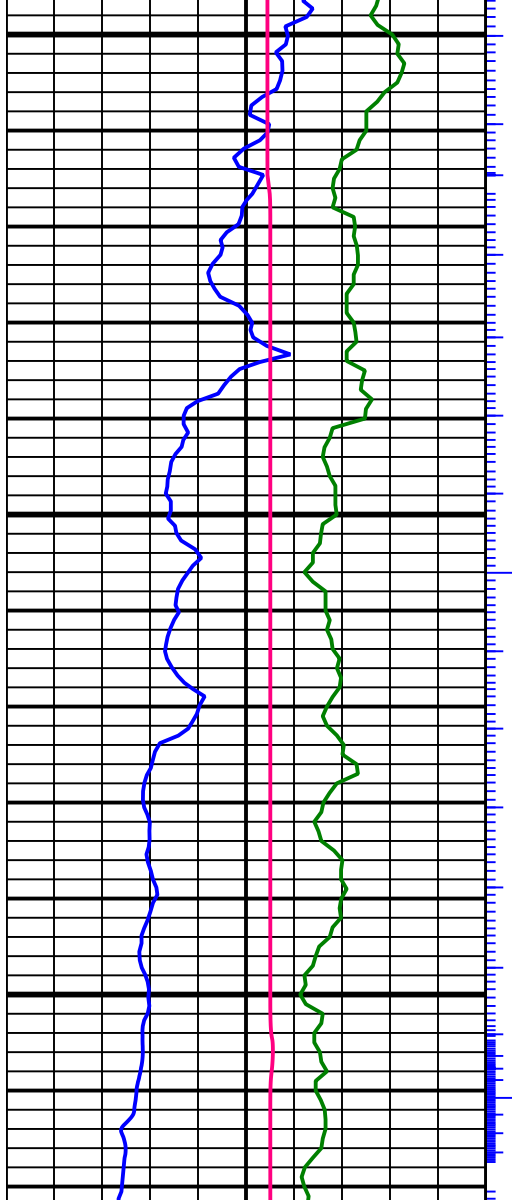


3400



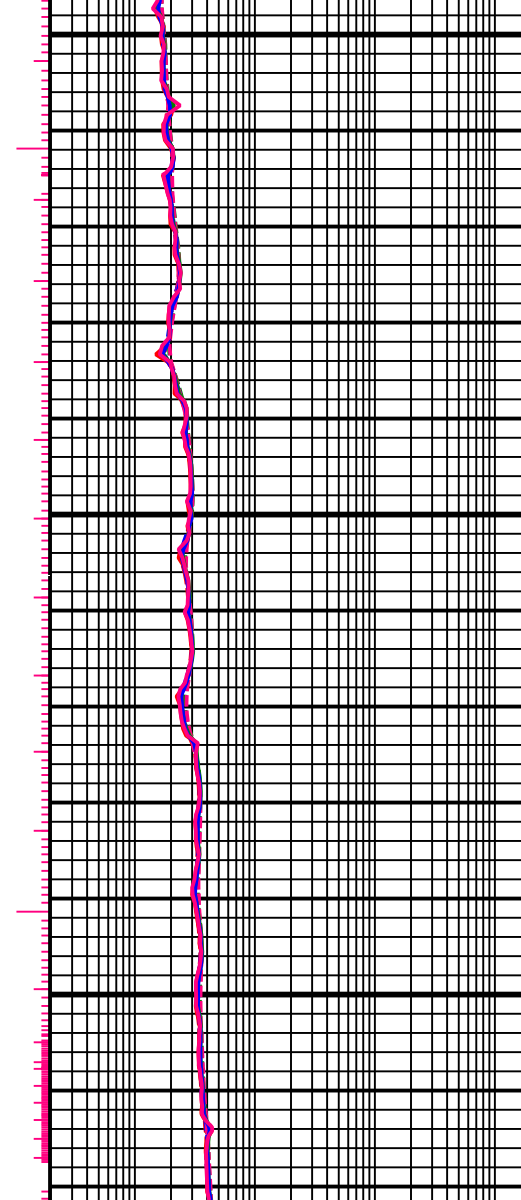
3392.00 MD,
8.18 INC, 3389.11 TVD
35.94 AZC

3481.00 MD,
7.16 INC, 3477.31 TVD
33.25 AZC

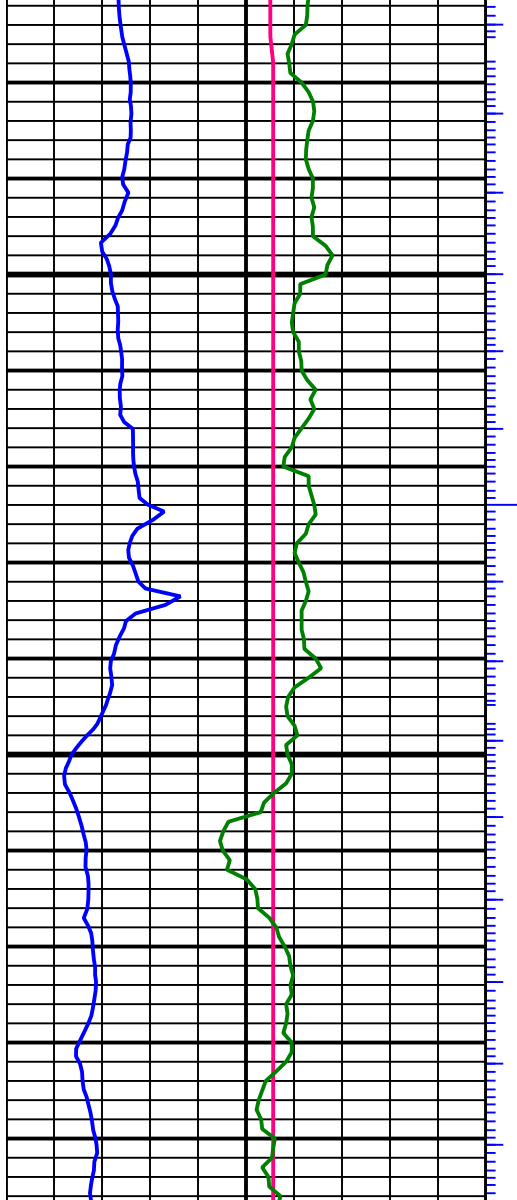


3500

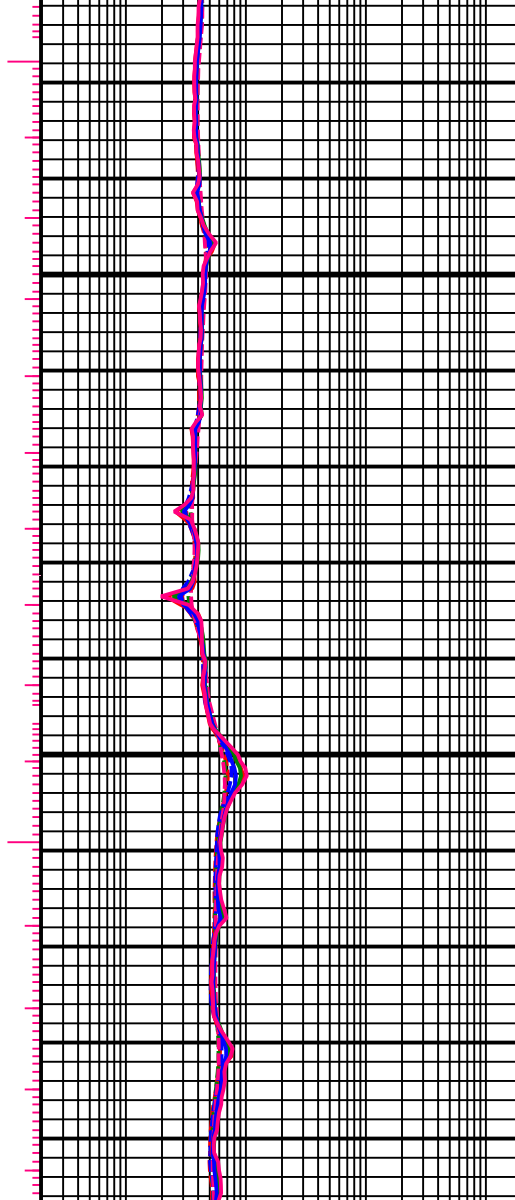
3600



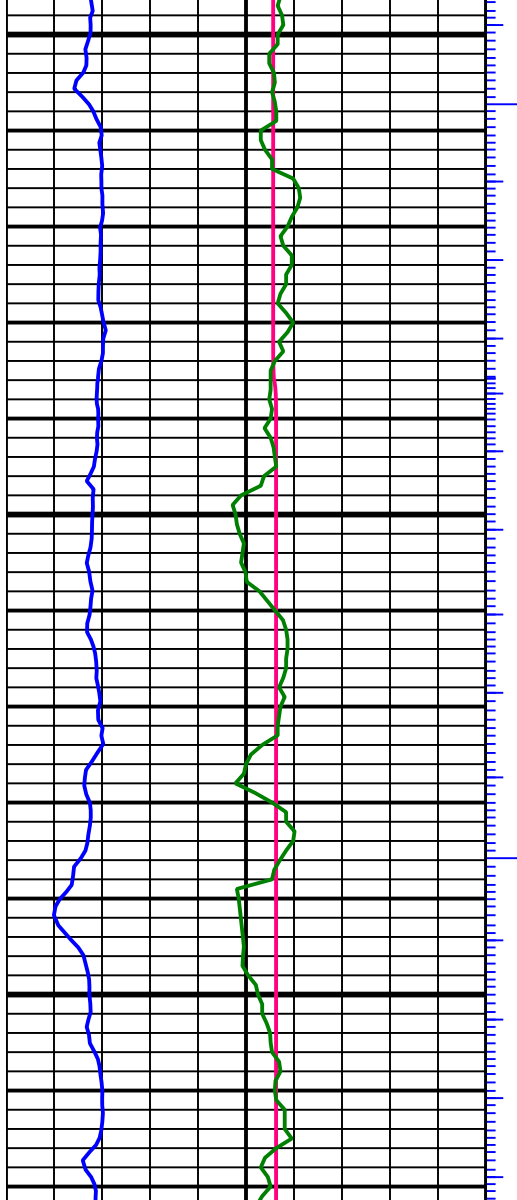
3571.00 MD, 3566.64 TVD
6.89 INC, 30.39 AZC



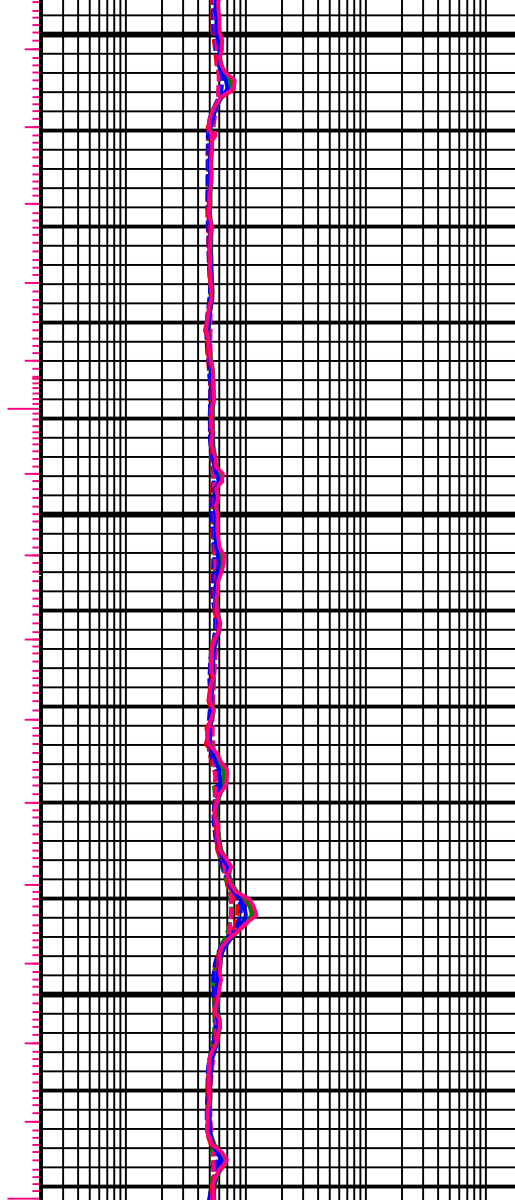
3700



3661.00 MD, 3656.01 TVD
6.67 INC, 32.81 AZC



3800

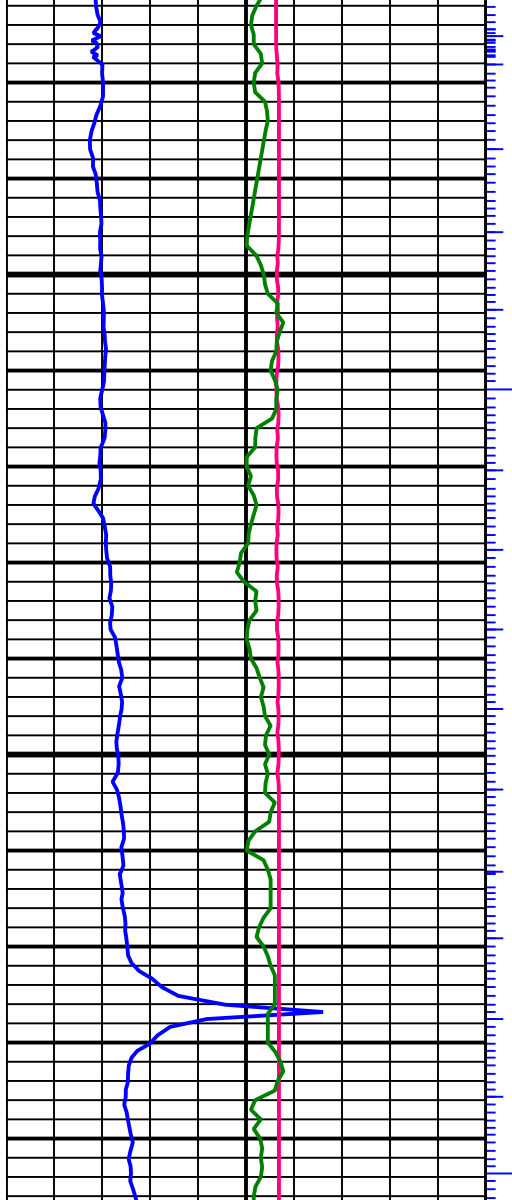


3750.00 MD,
6.94 INC,

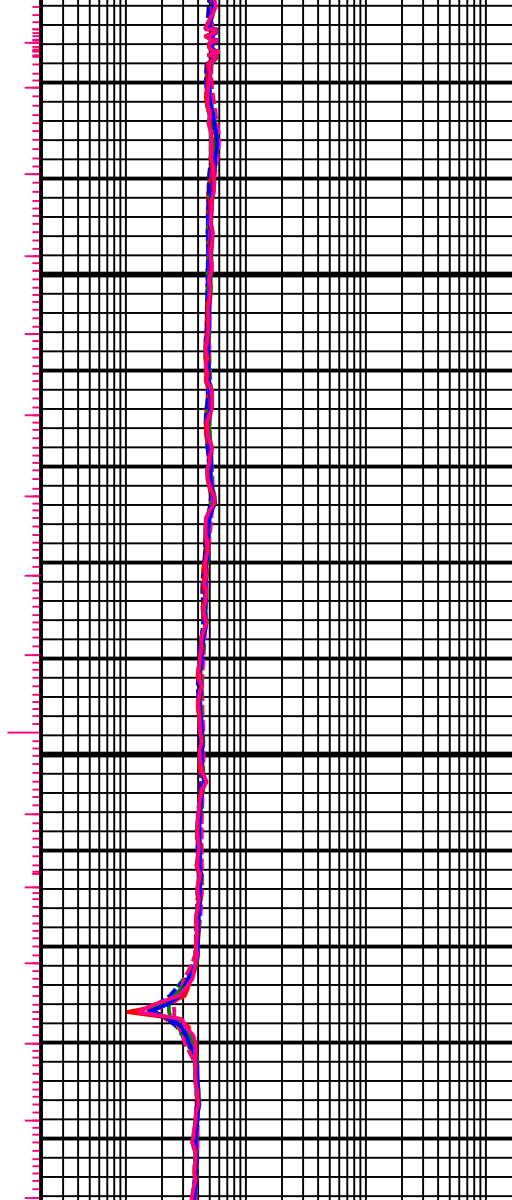
3744.38 TVD
30.96 AZC

3840.00 MD,
7.03 INC,

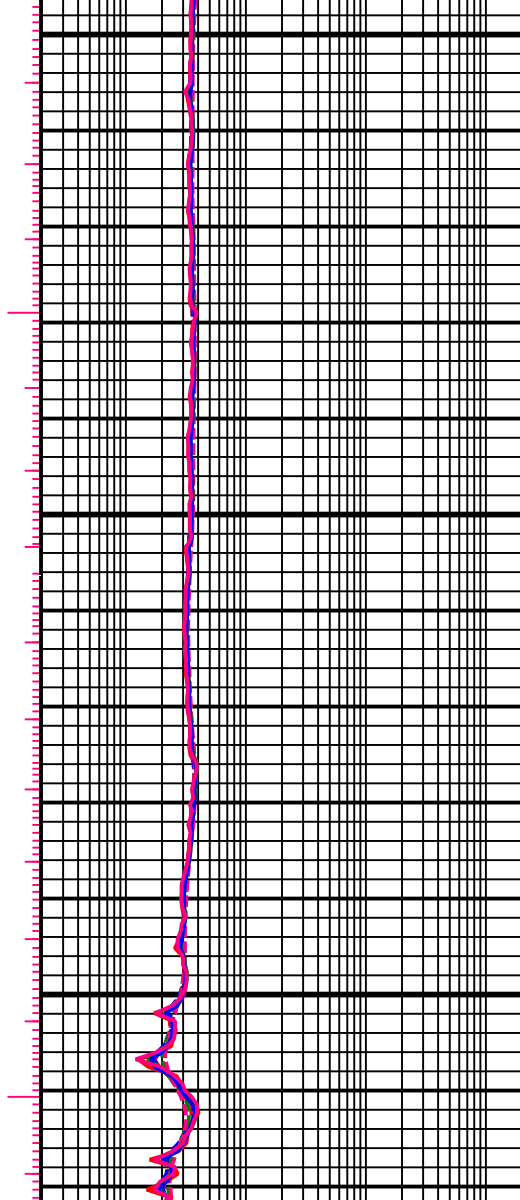
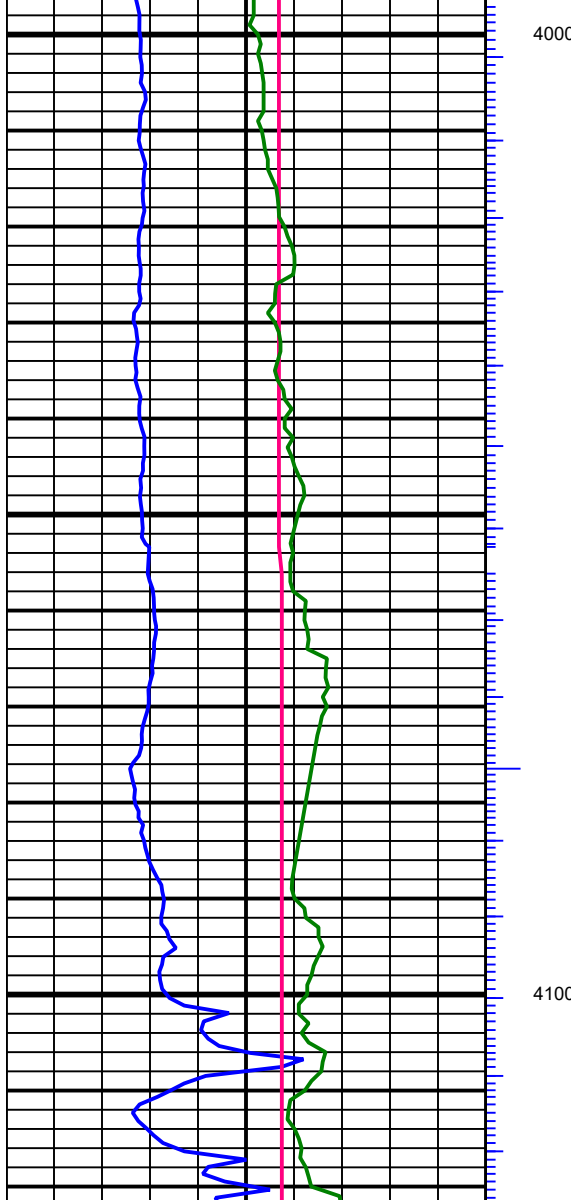
3833.72 TVD
28.89 AZC



3900

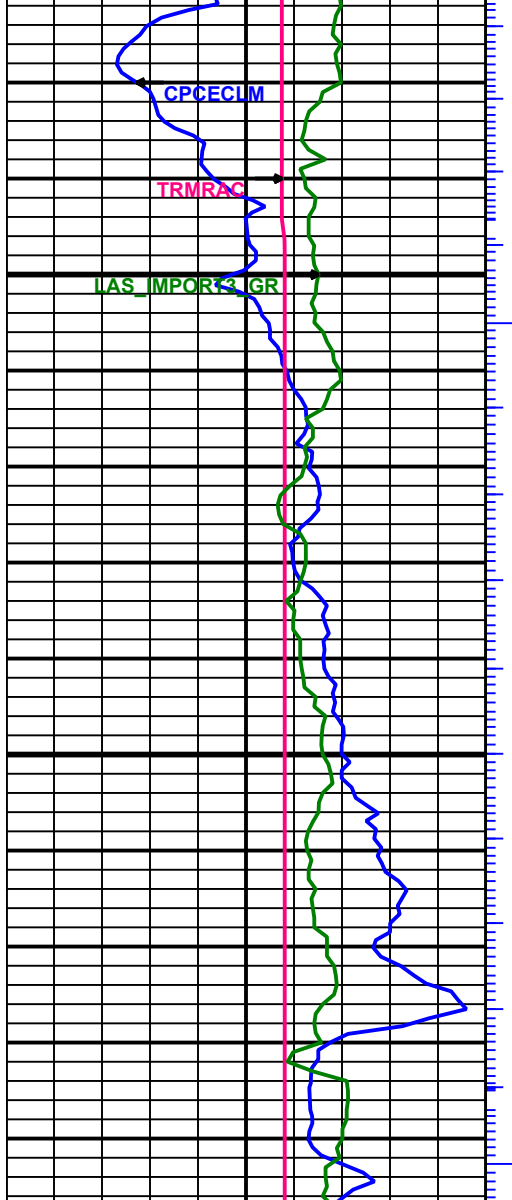


3929.00 MD, 3922.04 TVD
7.11 INC, 25.81 AZC

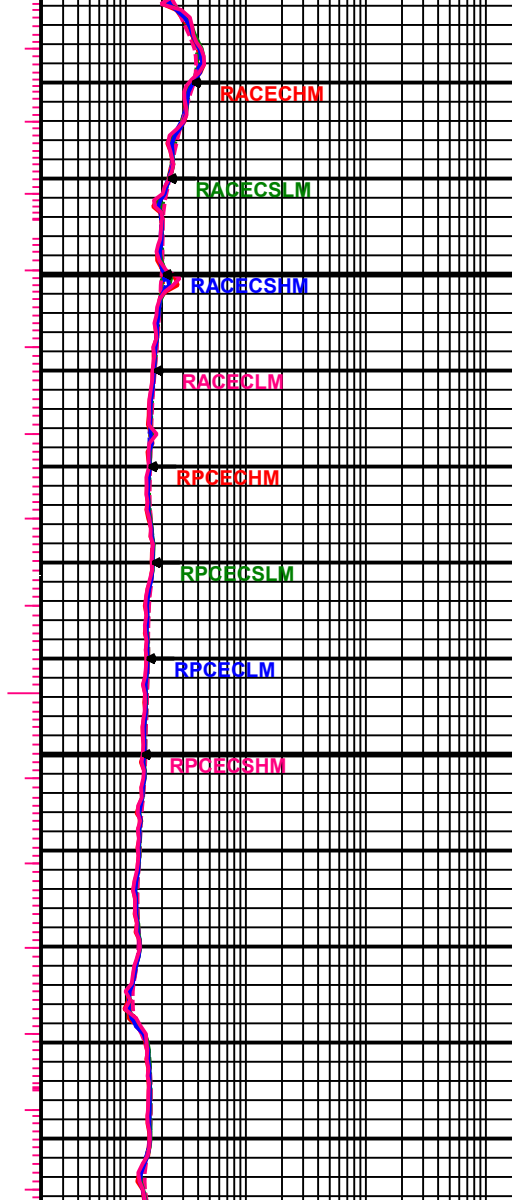


4019.00 MD, 4011.38 TVD
6.81 INC, 24.66 AZC

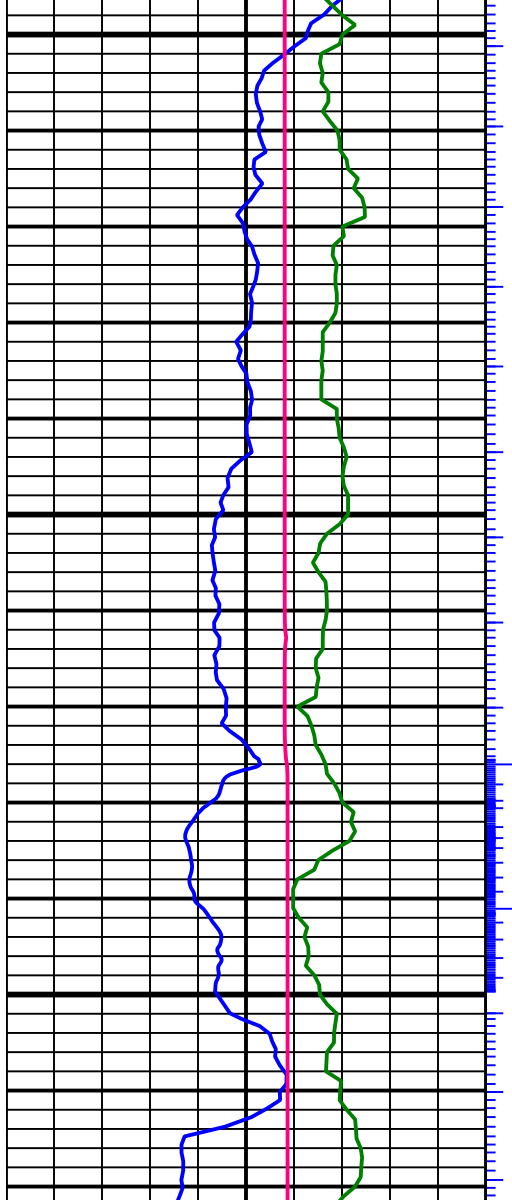
4108.00 MD, 4099.79 TVD
6.32 INC, 24.66 AZC



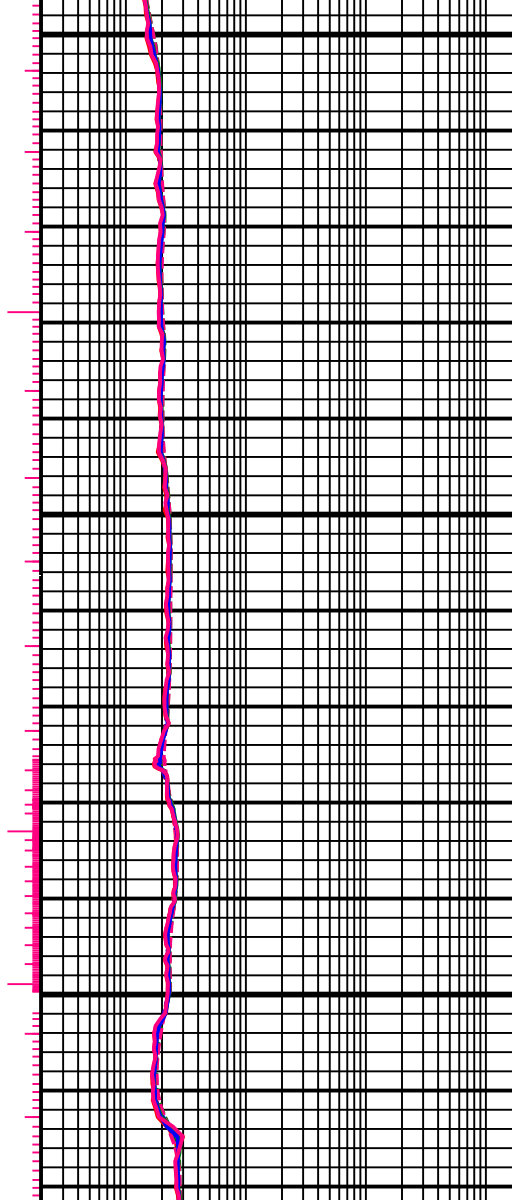
4200



4198.00 MD, 4189.27 TVD
6.01 INC, 23.29 AZC

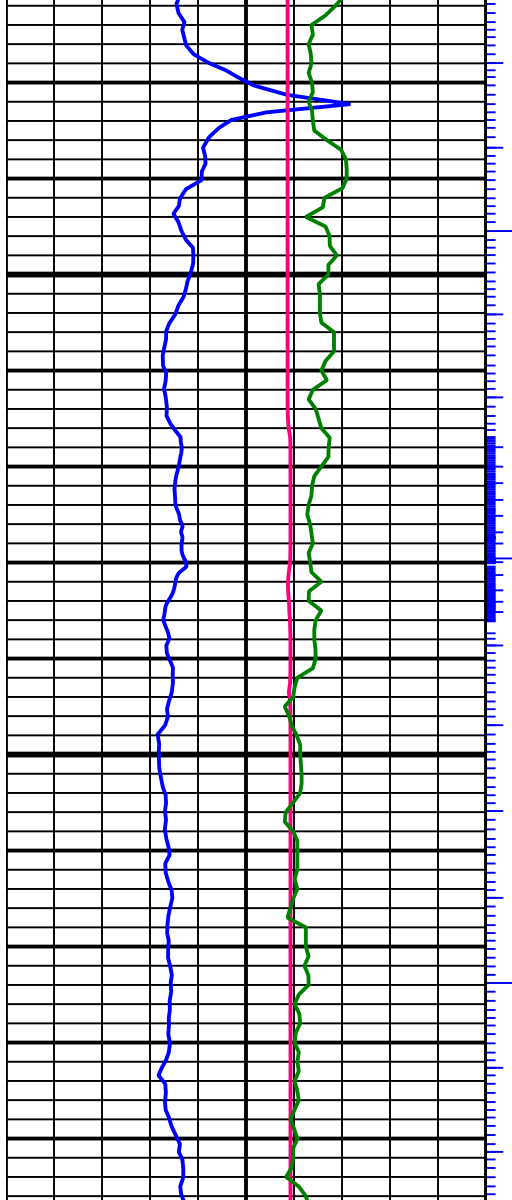


4300

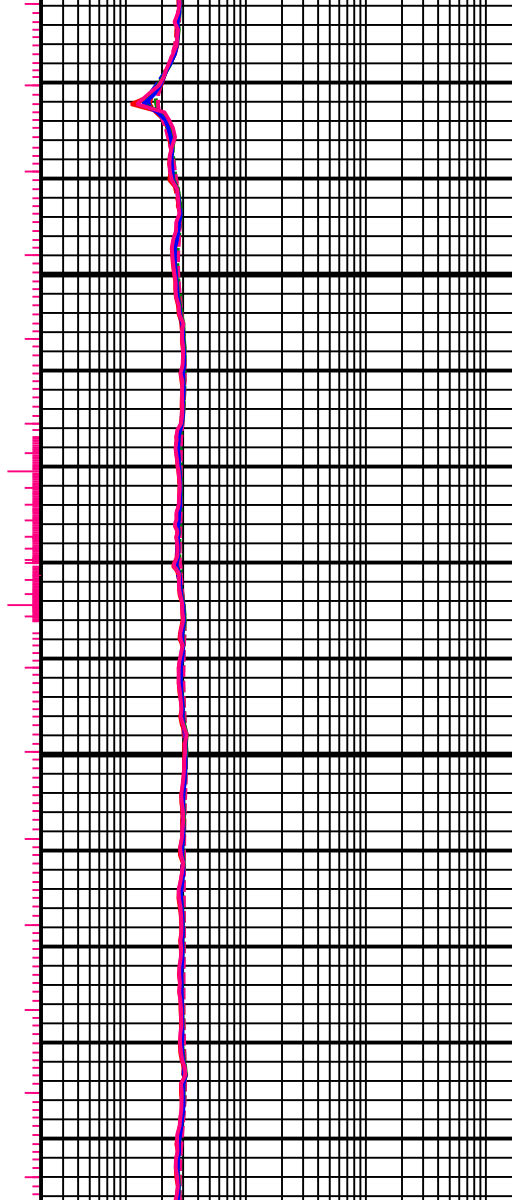


4287.00 MD,
7.03 INC,

4277.70 TVD
32.51 AZC



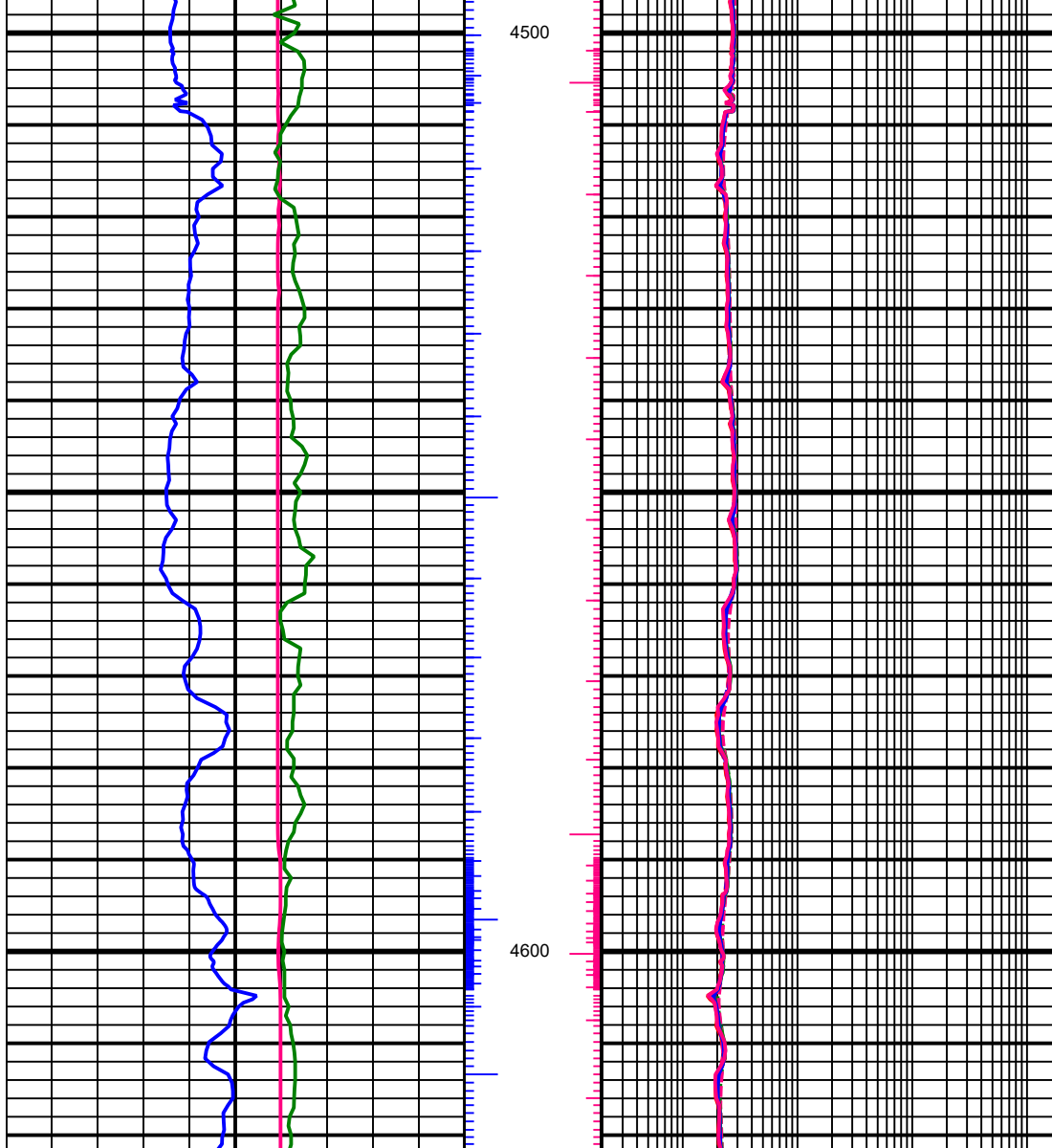
4400



4377.00 MD, 4367.05 TVD
6.76 INC, 34.18 AZC



4466.00 MD, 4455.46 TVD
6.36 INC, 33.12 AZC

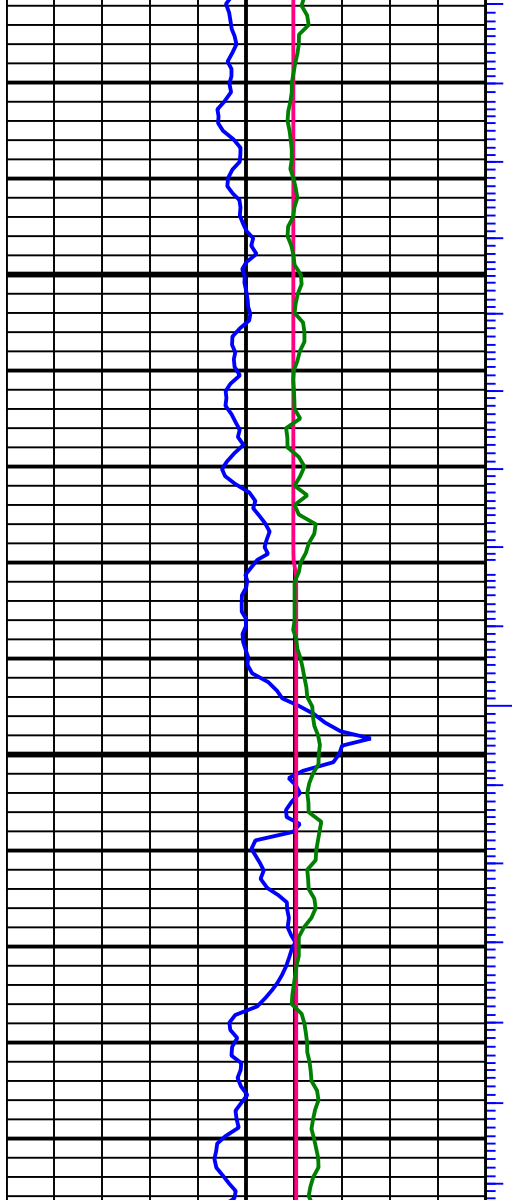


4500

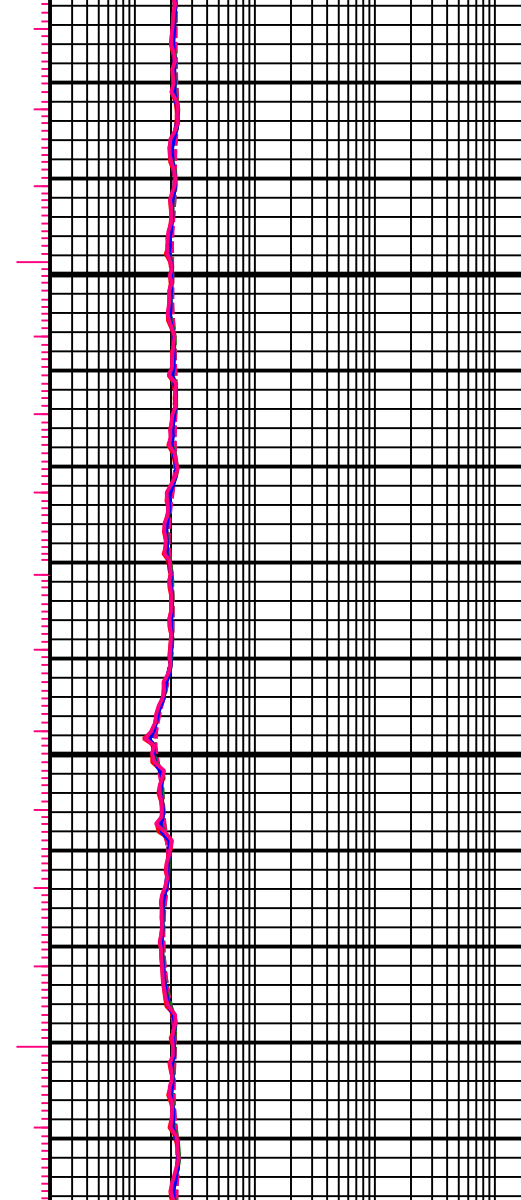
4600



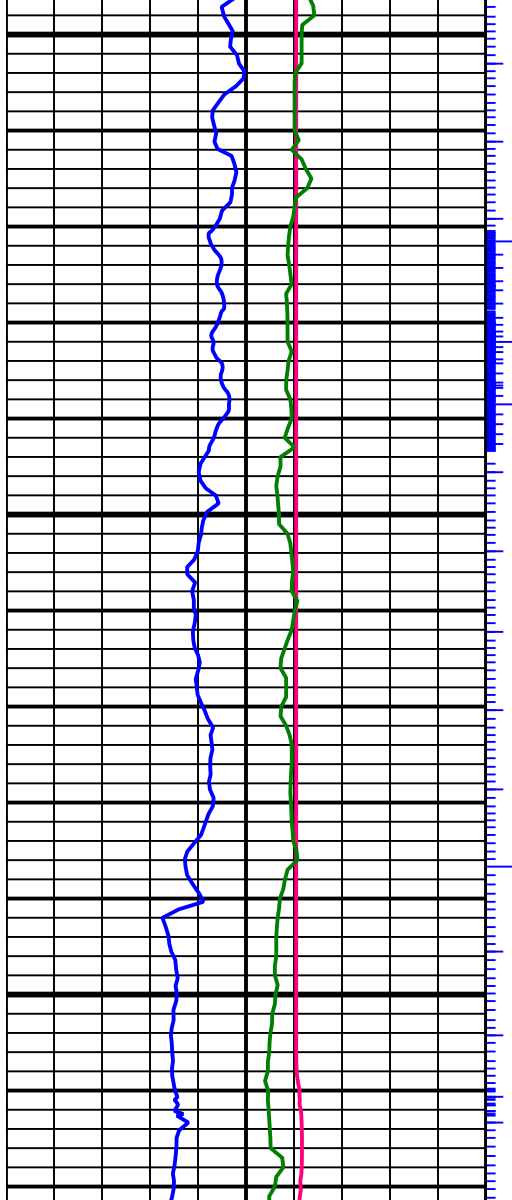
4556.00 MD, 4544.96 TVD
5.74 INC, 33.83 AZC



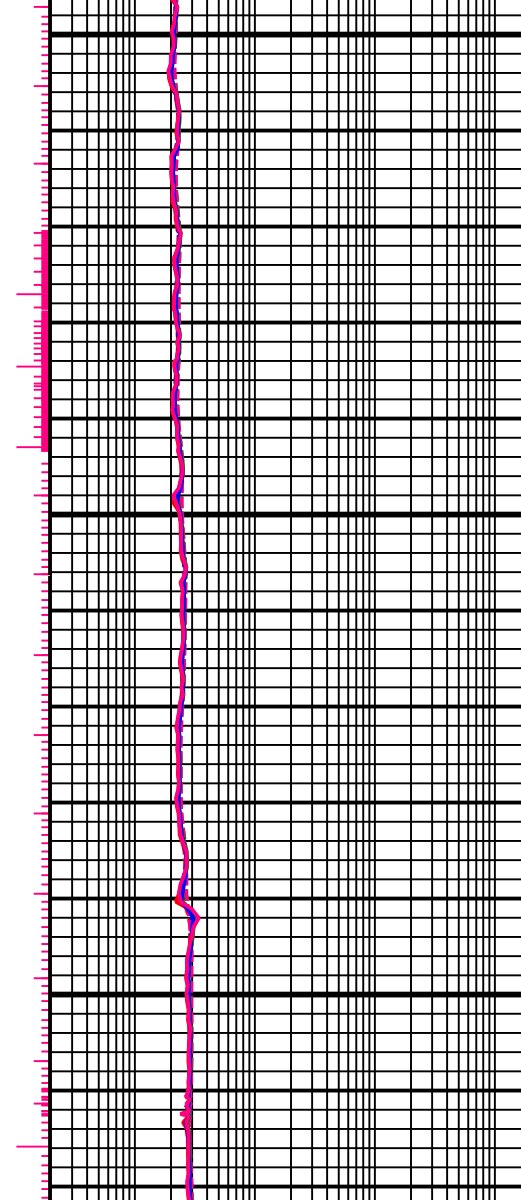
4700



4646.00 MD,
5.48 INC,
4634.53 TVD
37.53 AZC



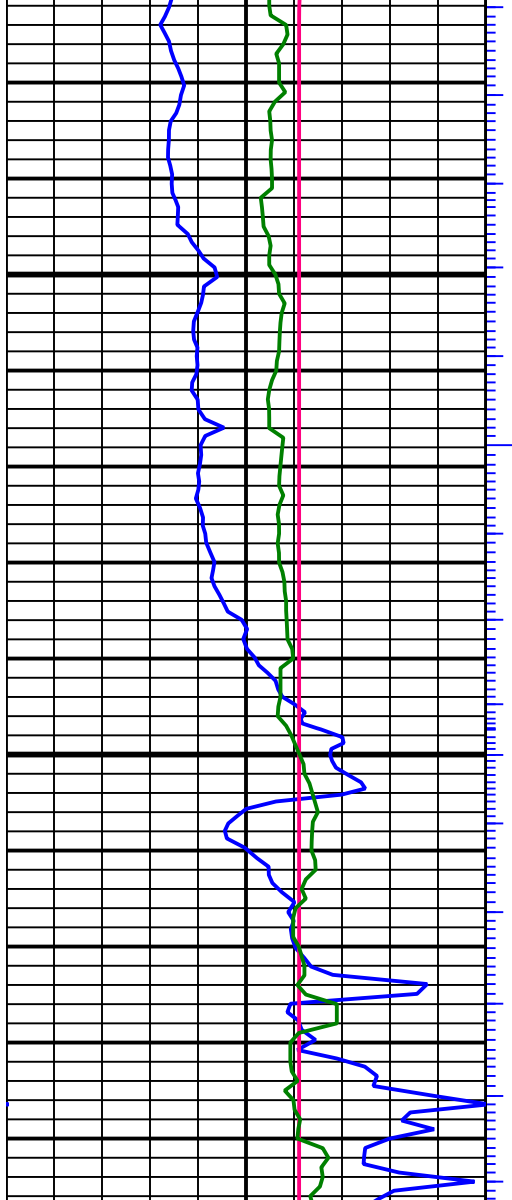
4800



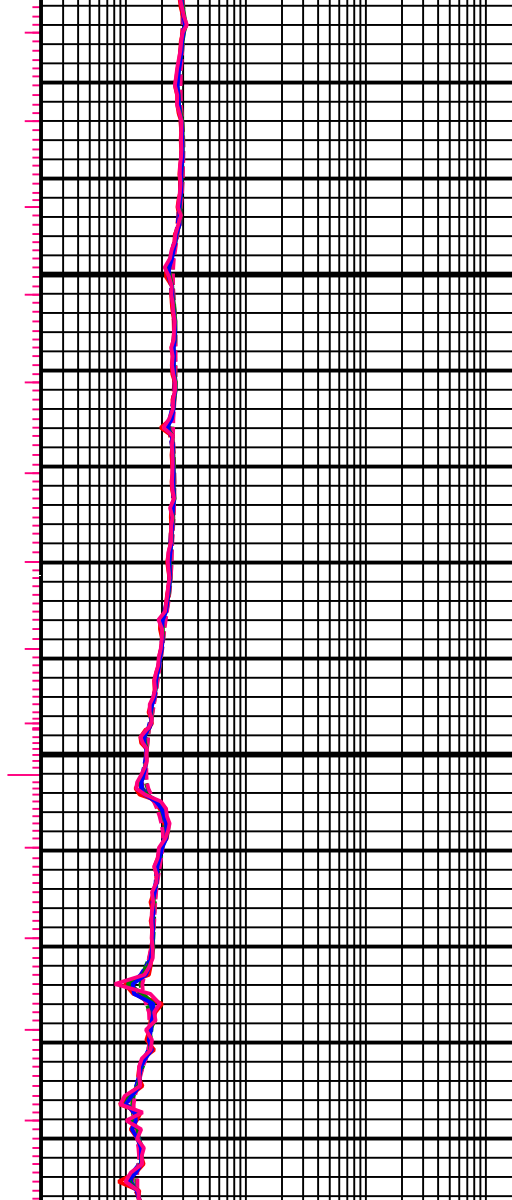
4765.00 MD, 4753.08 TVD,
4.51 INC, 40.13 AZC



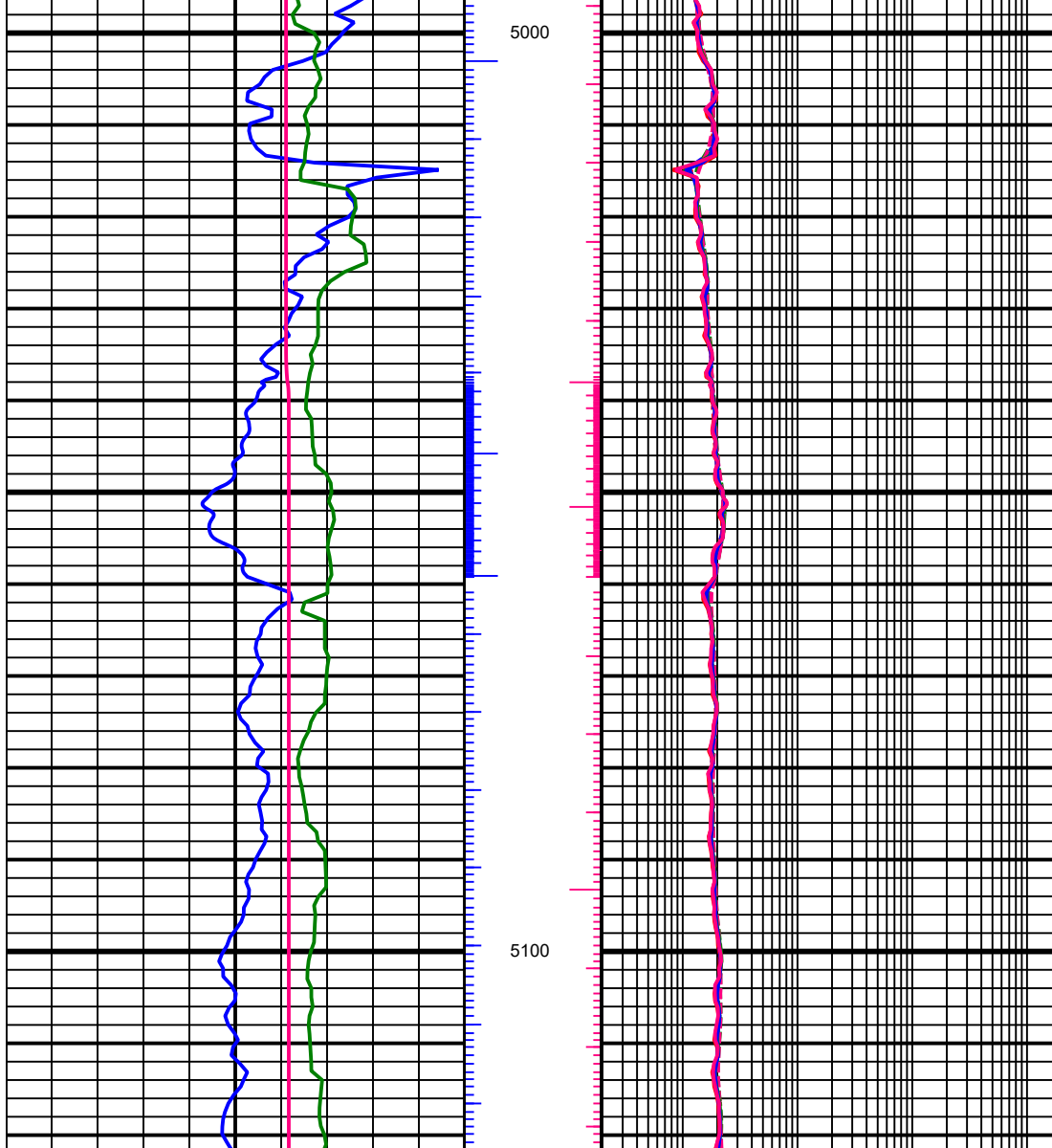
4855.00 MD, 4842.83 TVD,
4.02 INC, 42.82 AZC



4900



4944.00 MD, 4931.63 TVD
3.71 INC, 40.79 AZC

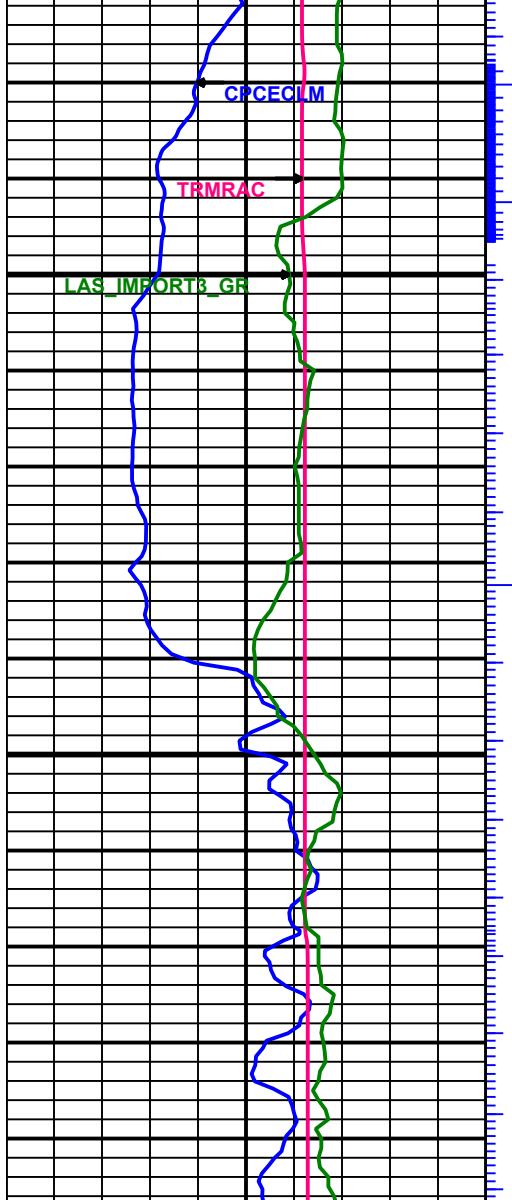


5000

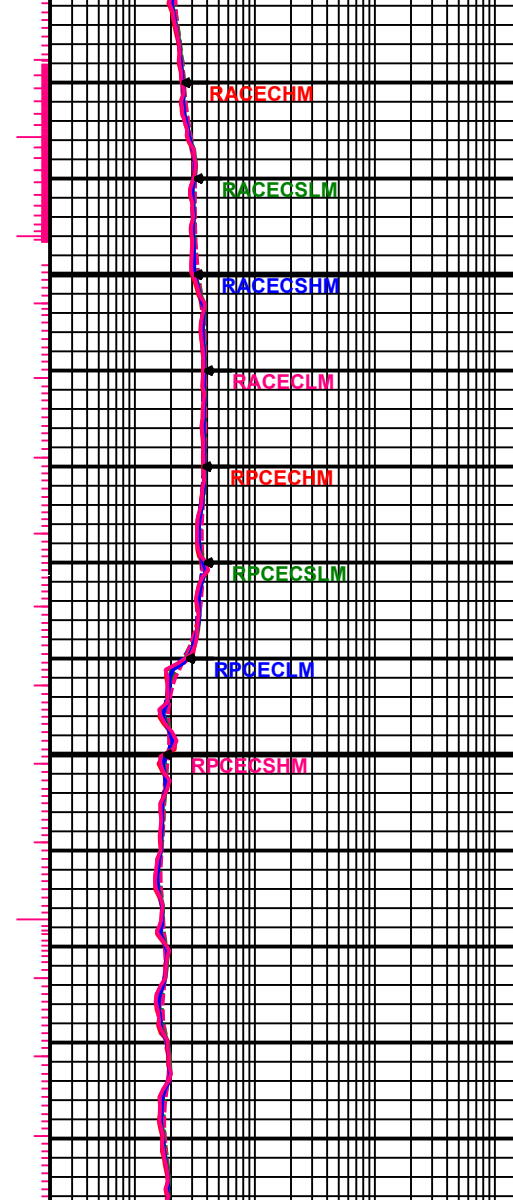
5100

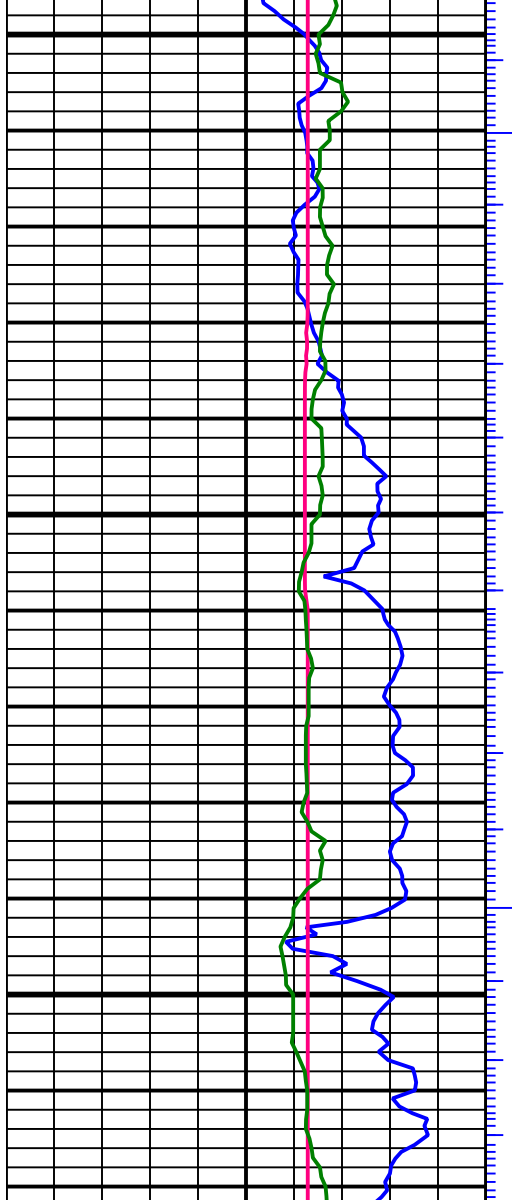


5034.00 MD, 5021.34 TVD
5.30 INC, 41.05 AZC

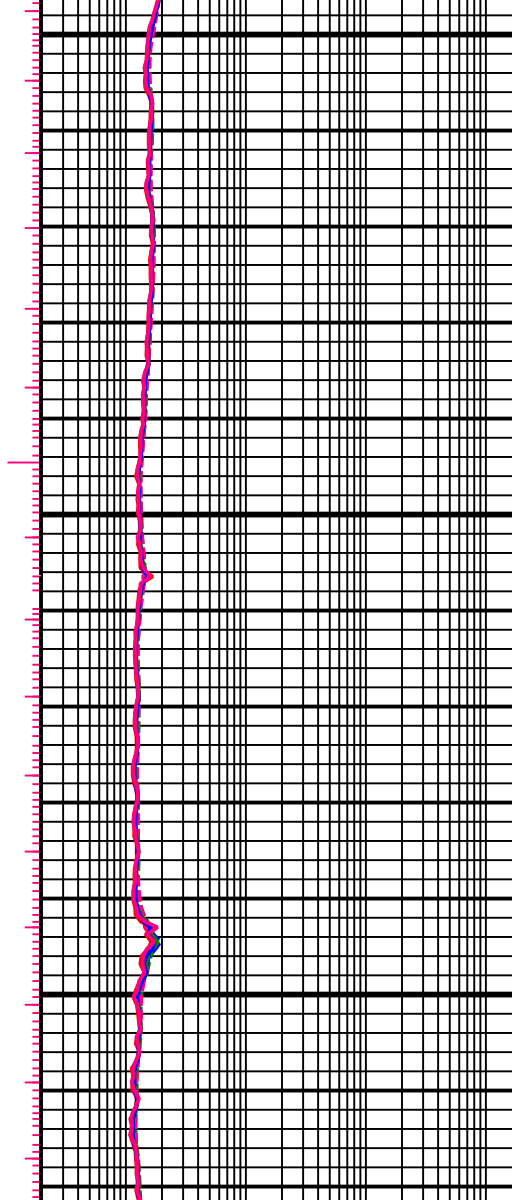


5200

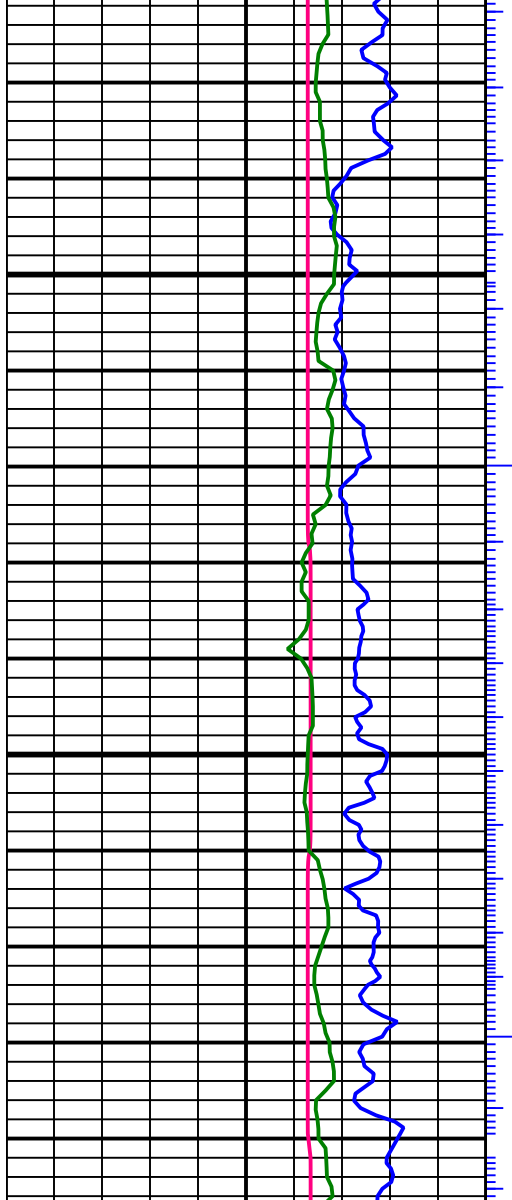




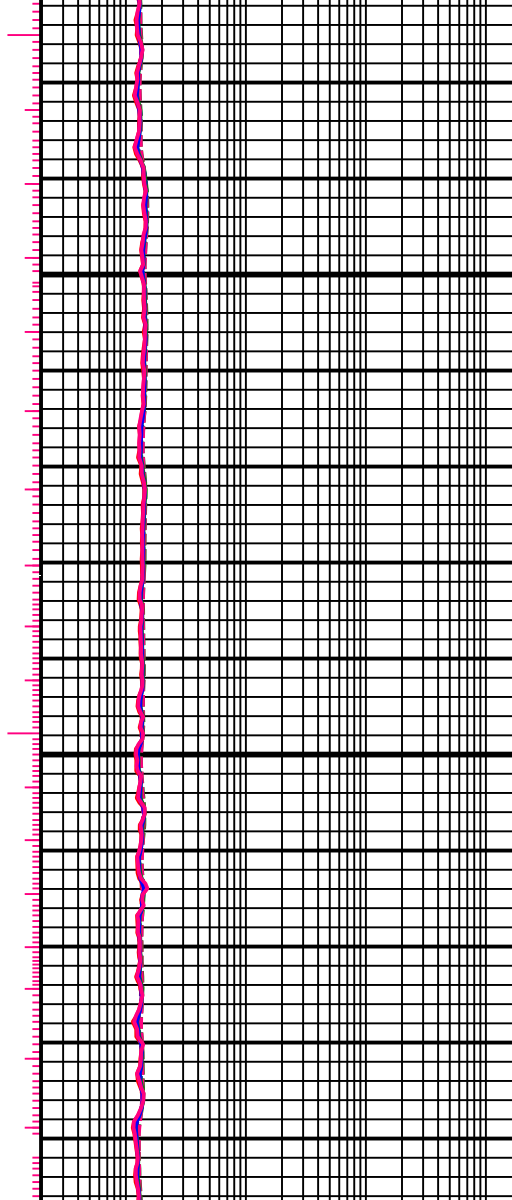
5300



5302.00 MD, 5288.05 TVD
5.61 INC, 26.03 AZC

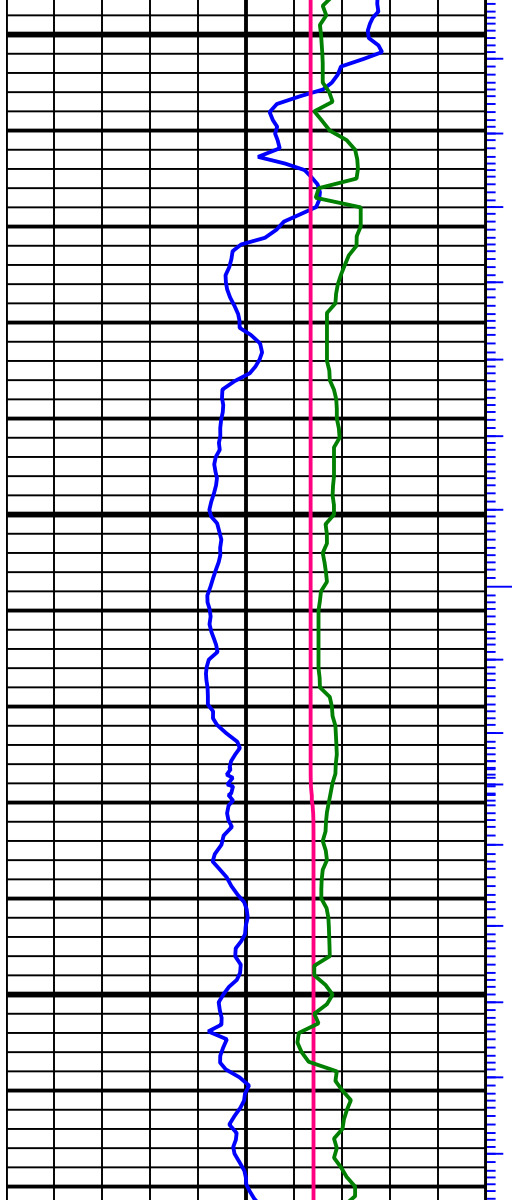


5400



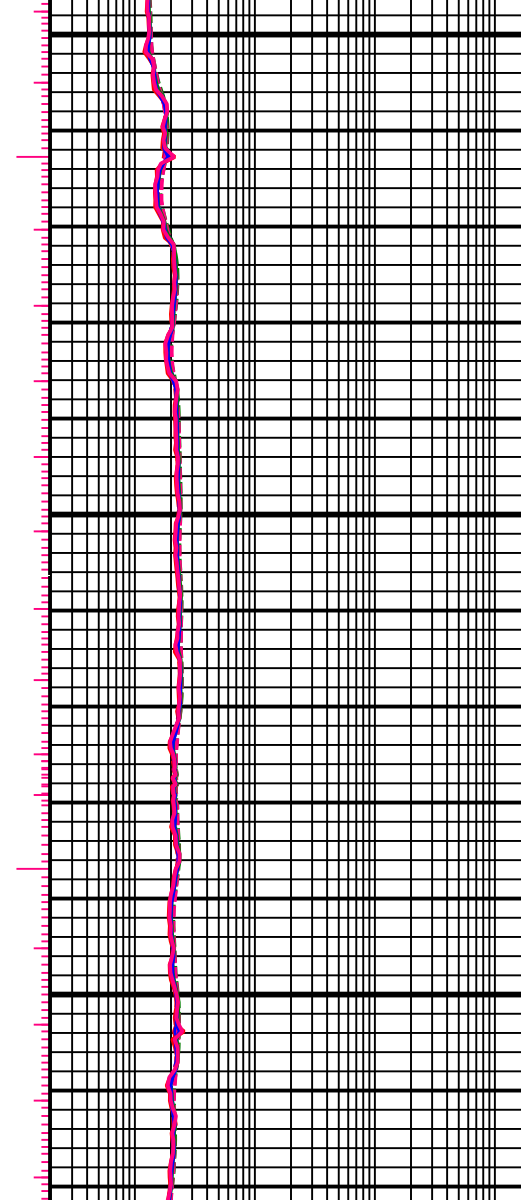
5392.00 MD, 5377.68 TVD
4.82 INC, 23.52 AZC

5481.00 MD, 5466.38 TVD
4.64 INC, 31.27 AZC

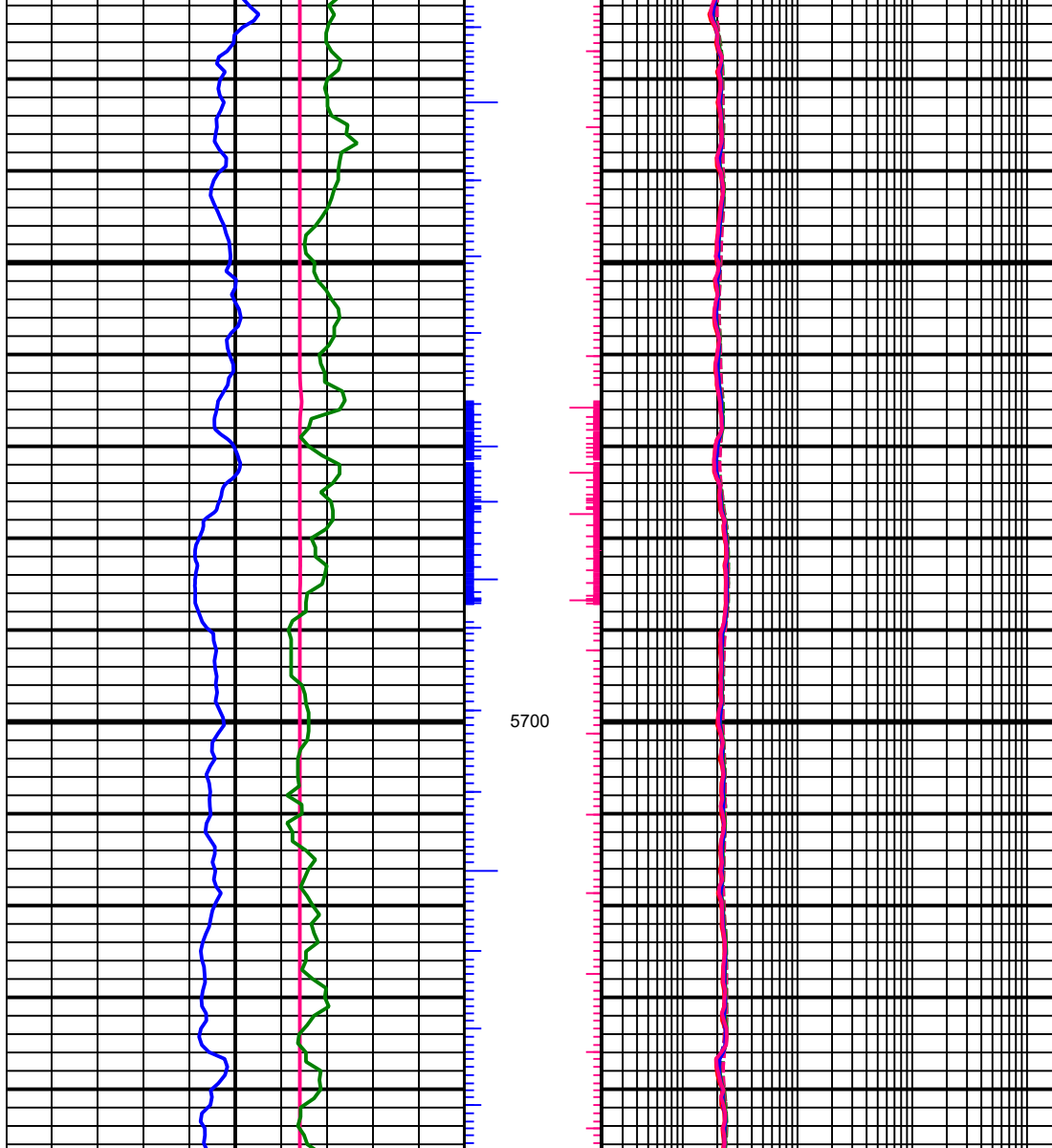


5500

5600



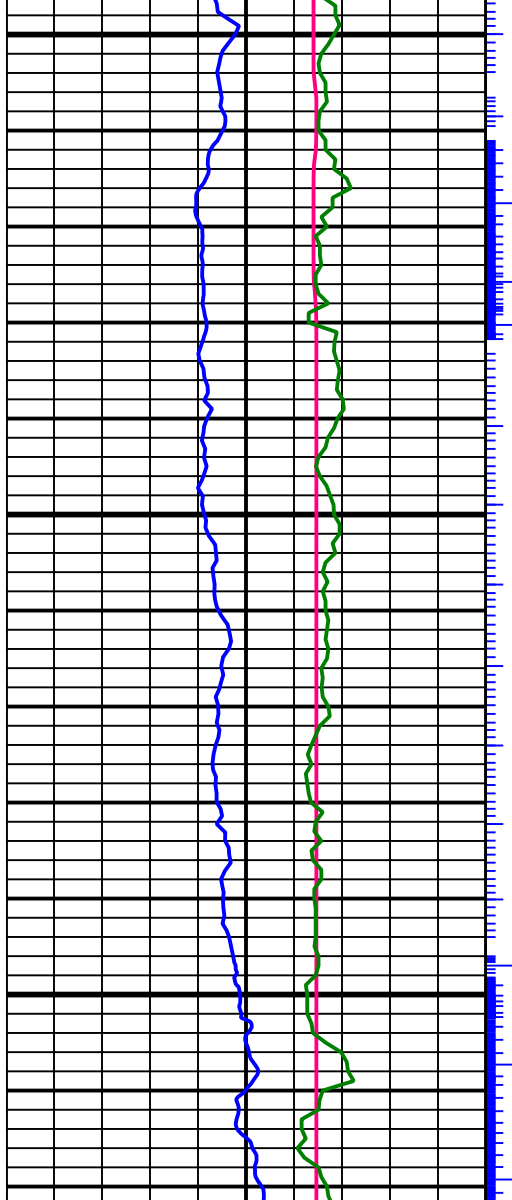
5571.00 MD, 5556.17 TVD
3.23 INC, 26.20 AZC



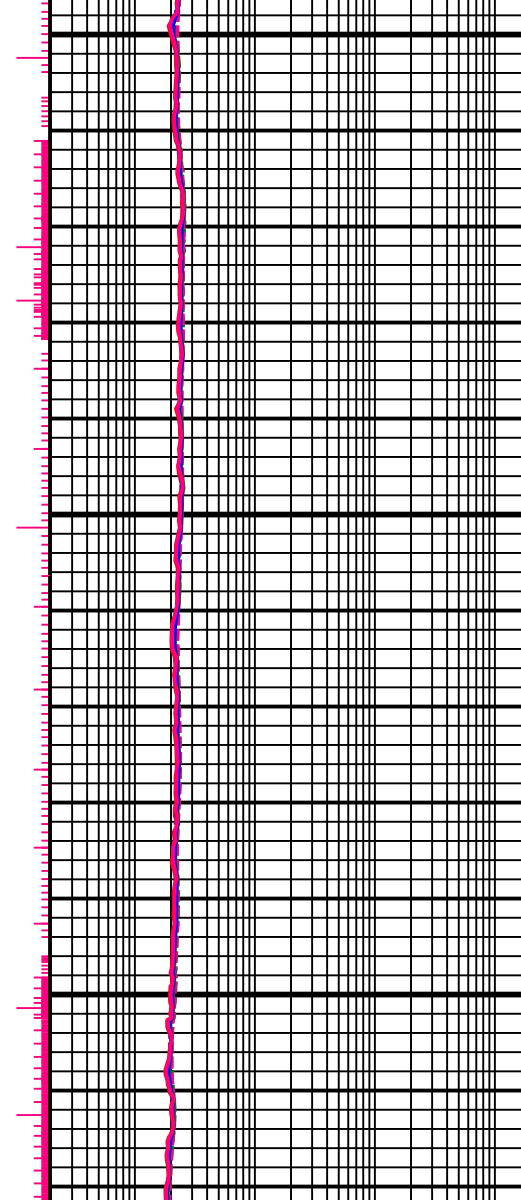
5700



5660.00 MD, 5645.10 TVD
2.30 INC, 121.87 AZC



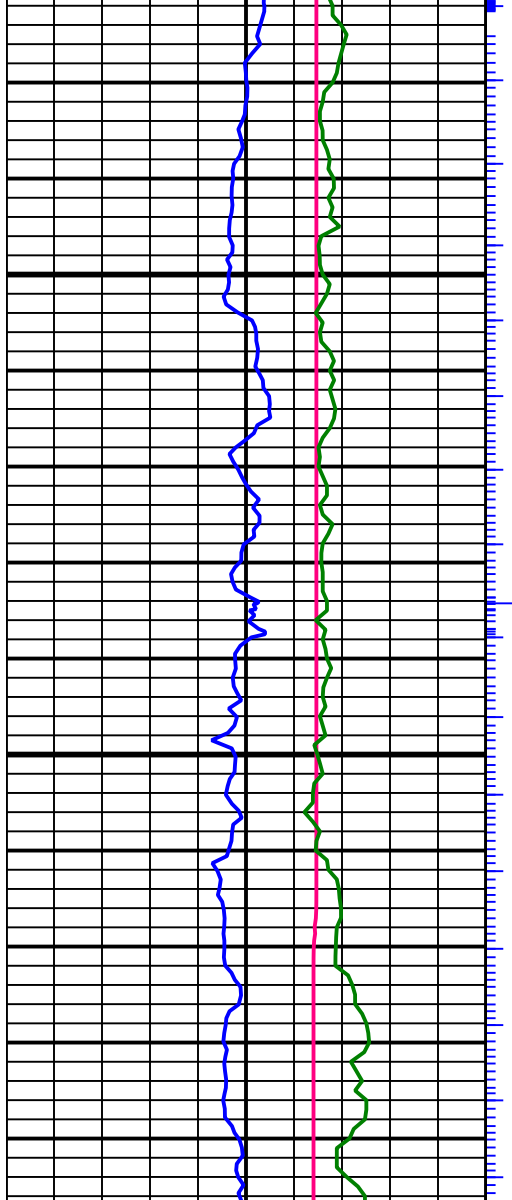
5800



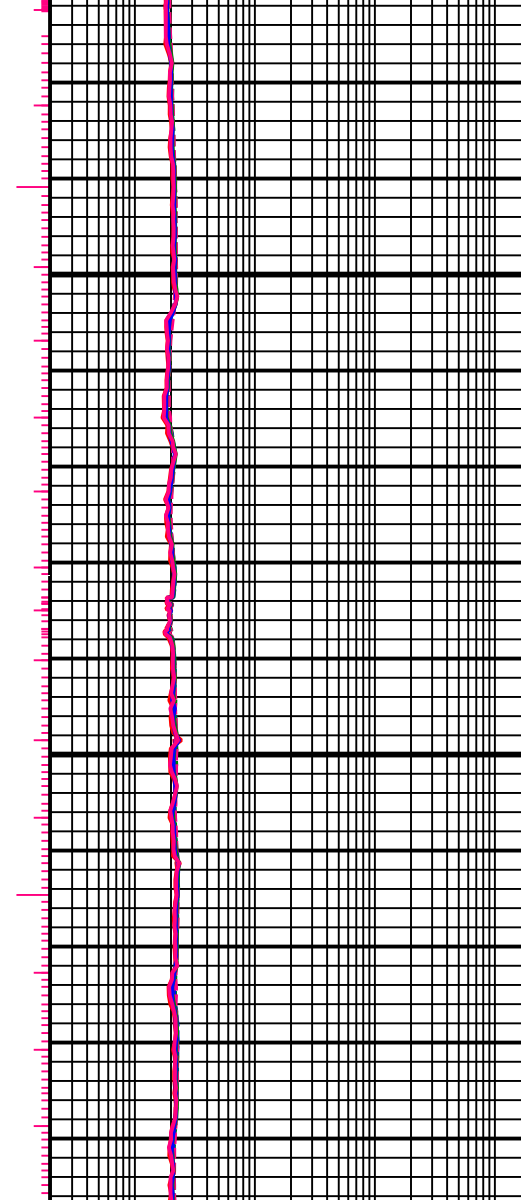
5750.00 MD, 5734.48 TVD
10.47 INC, 157.17 AZC



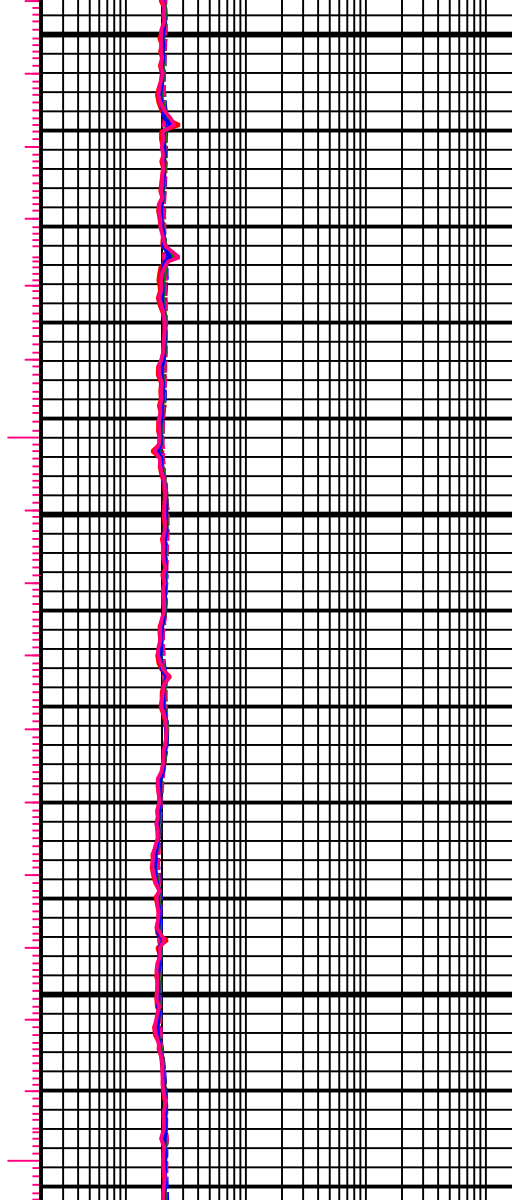
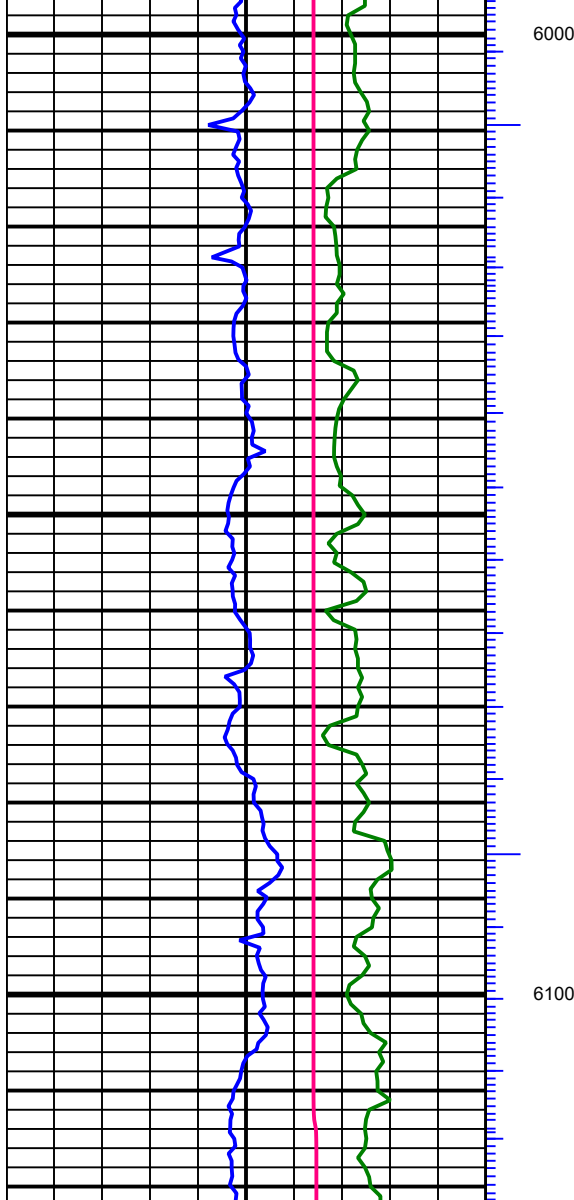
5839.00 MD, 5820.83 TVD
17.45 INC, 141.57 AZC



5900

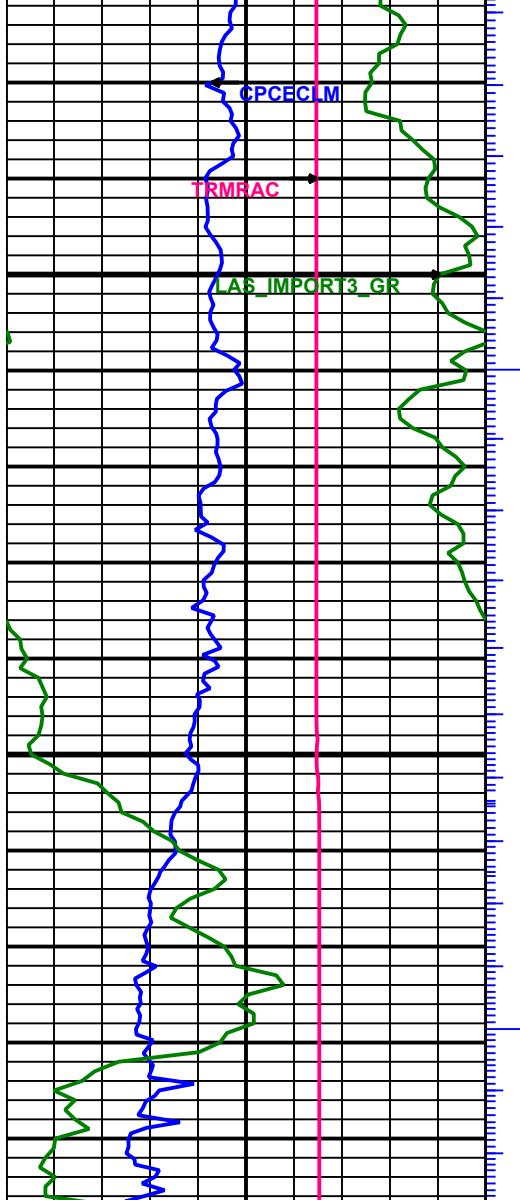


5929.00 MD, 5904.85 TVD
24.39 INC, 140.91 AZC

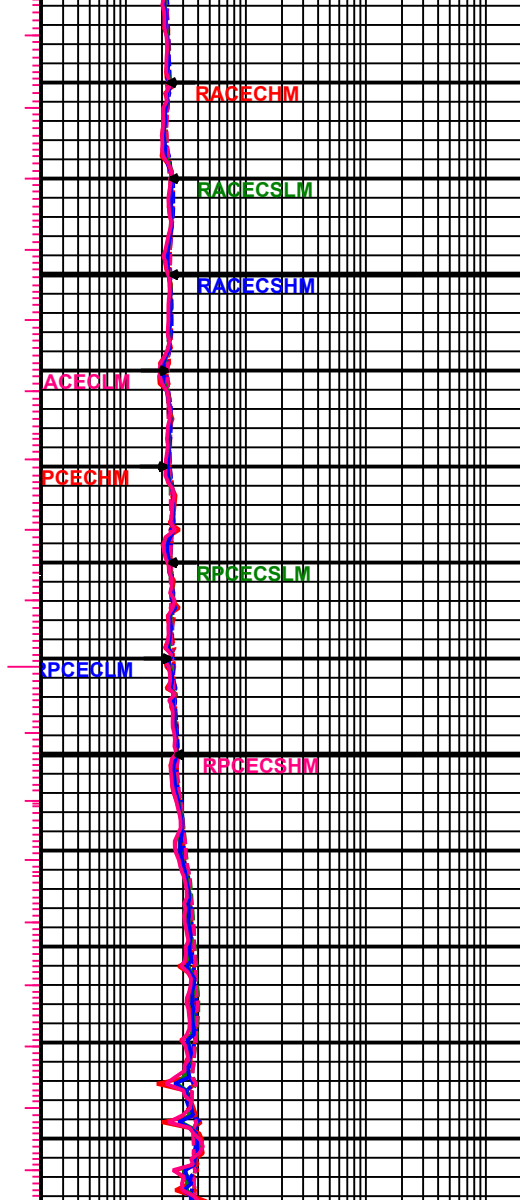


6018.00 MD, 5984.17 TVD
29.47 INC, 140.60 AZC

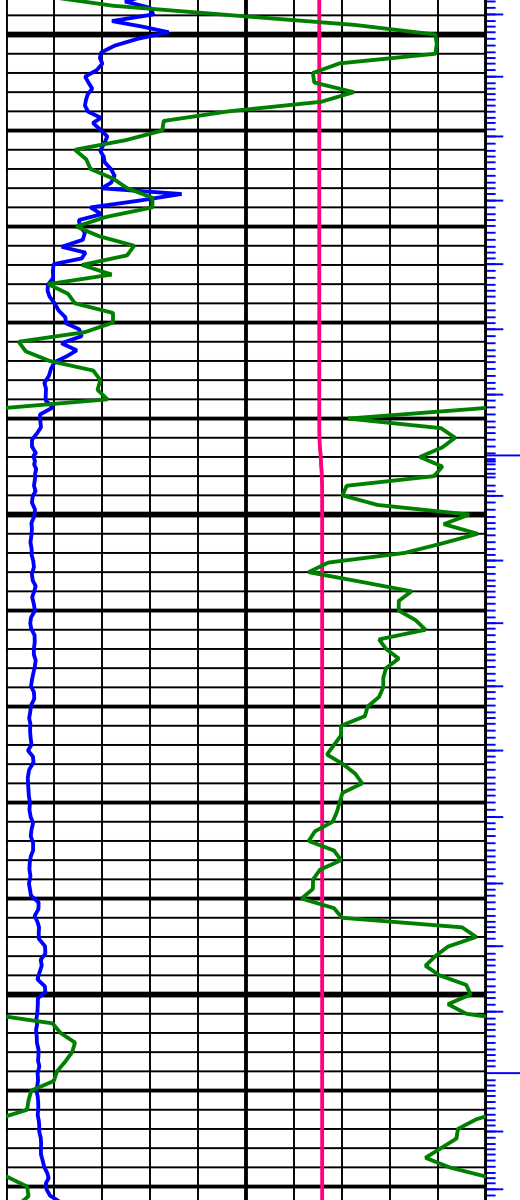
6108.00 MD, 6060.16 TVD
35.57 INC, 156.25 AZC



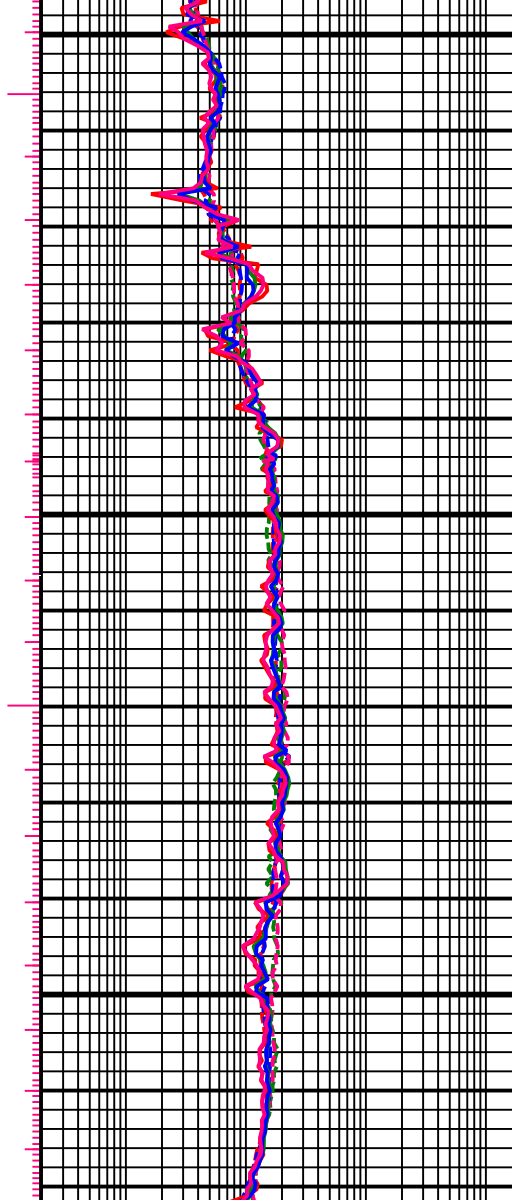
6200



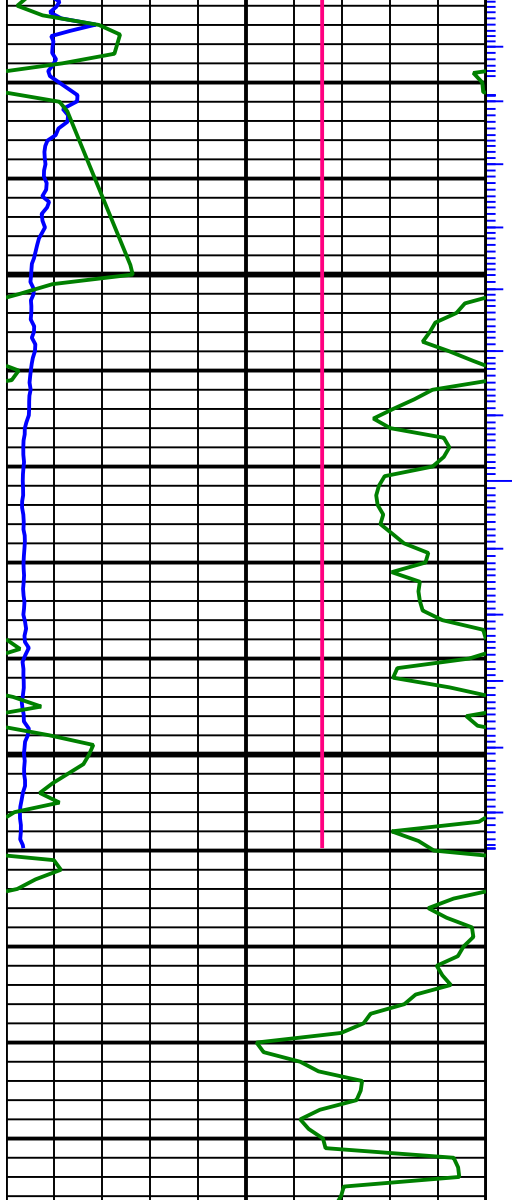
6197.00 MD, 6128.69 TVD
43.84 INC, 169.38 AZC



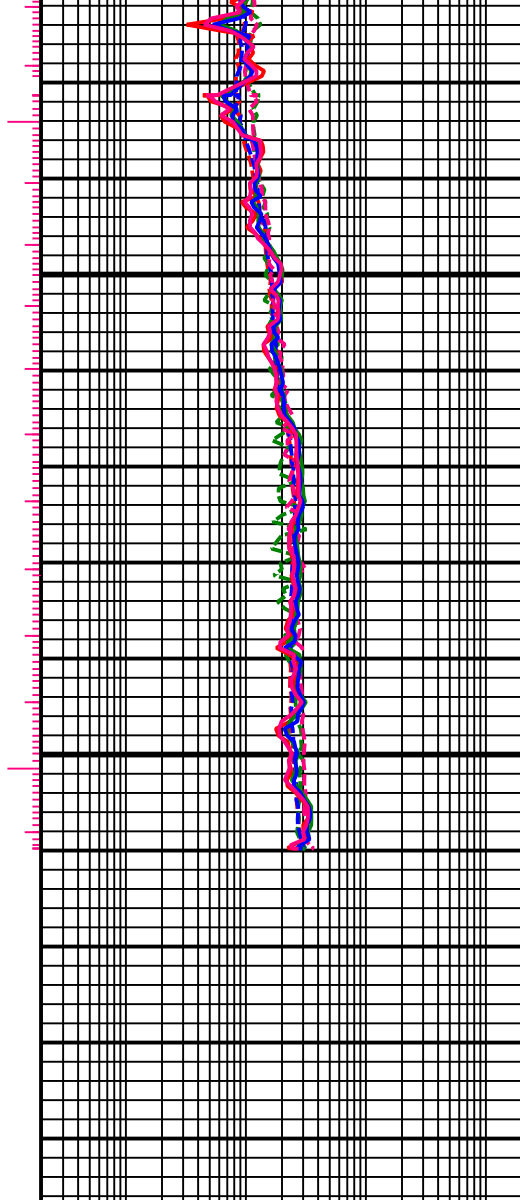
6300



6287.00 MD, 6189.72 TVD
50.86 INC, 179.78 AZC



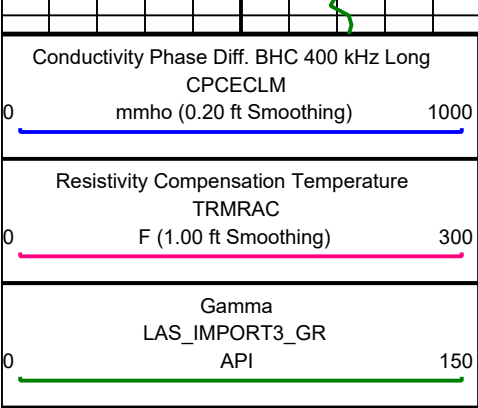
6400



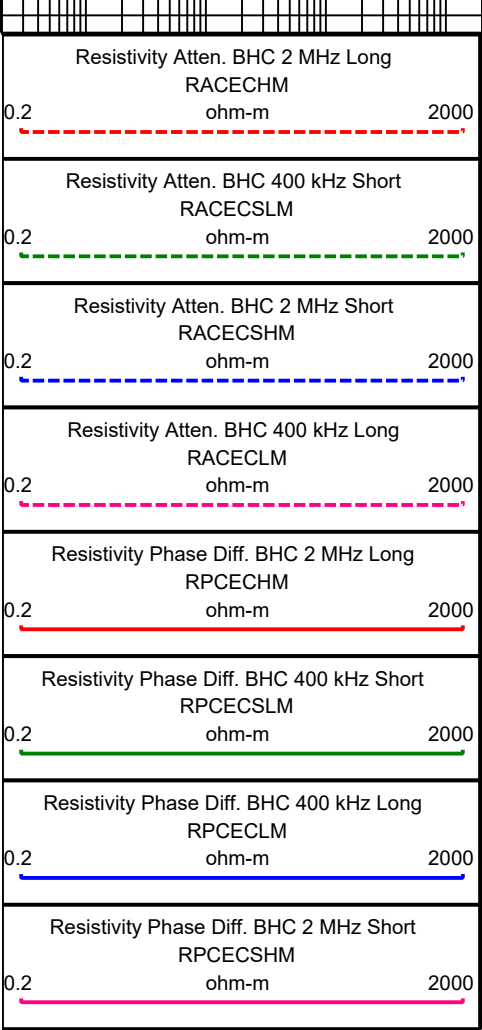
6376.00 MD, 6243.96 TVD
54.04 INC, 182.55 AZC



6466.00 MD, 6292.57 TVD
60.54 INC, 183.79 AZC



6500
1:240
FEET
MD



Directional Surveys