



Sterling, CO

RADIAL BOND LOG
GAMMA RAY, CCL

Company	KPK
Well	COSSLETT #1
Field	SPINNDLE
County	WELD
State	COLO

Location:	API # : 05-123-07615	Other Services
NENE		
SEC	TWP	RGE
Permanent Datum	GL	Elevation
Log Measured From	KB	
Drilling Measured From	KB	Elevation
		K.B. D.F. G.L.

Date	19JUNE2025
Run Number	ONE
Depth Driller	
Depth Logger	4562
Bottom Logged Interval	4564
Top Log Interval	SURFACE
Open Hole Size	7 7/8
Type Fluid	WATER
Density / Viscosity	-----
Max. Recorded Temp.	NA
Estimated Cement Top	SEE LOG
Time Well Ready	ROA
Time Logger on Bottom	AM
Equipment Number	2
Location	STERLING
Recorded By	LUKE UNREIN
Witnessed By	RICK RAMOS

Borehole Record				Tubing Record			
Run Number	Bit	From	To	Size	Weight	From	To
Casing Record	Size			Mgt/Ft		Top	Bottom
Surface String	8 5/8			24		SURFACE	568
Prot. String							
Production String	5 1/2			15.5		SURFACE	5176
Liner							

<<< Fold Here >>>

All interpretations are opinions based on inferences from electrical or other measurements and we cannot and do not guarantee the accuracy or correctness of any interpretation, and we shall not, except in the case of gross or willful negligence on our part, be liable or responsible for any loss, costs, damages, or expenses incurred or sustained by anyone resulting from any interpretation made by any of our officers, agents or employees. These interpretations are also subject to our general terms and conditions set out in our current Price Schedule.

Comments

THANK YOU FOR CHOOSING BRAND-X WIRELINE

323 Travel Time (usec) 223

0 Gamma Ray 150

CCL

0 Amplitude (mV)100

Amplified Amplitude

0 (mV) 10

-5 AMPS8 150

-5 AMPS7 150

-5 AMPS6 150

-5 AMPS5 150

-5 AMPS4 150

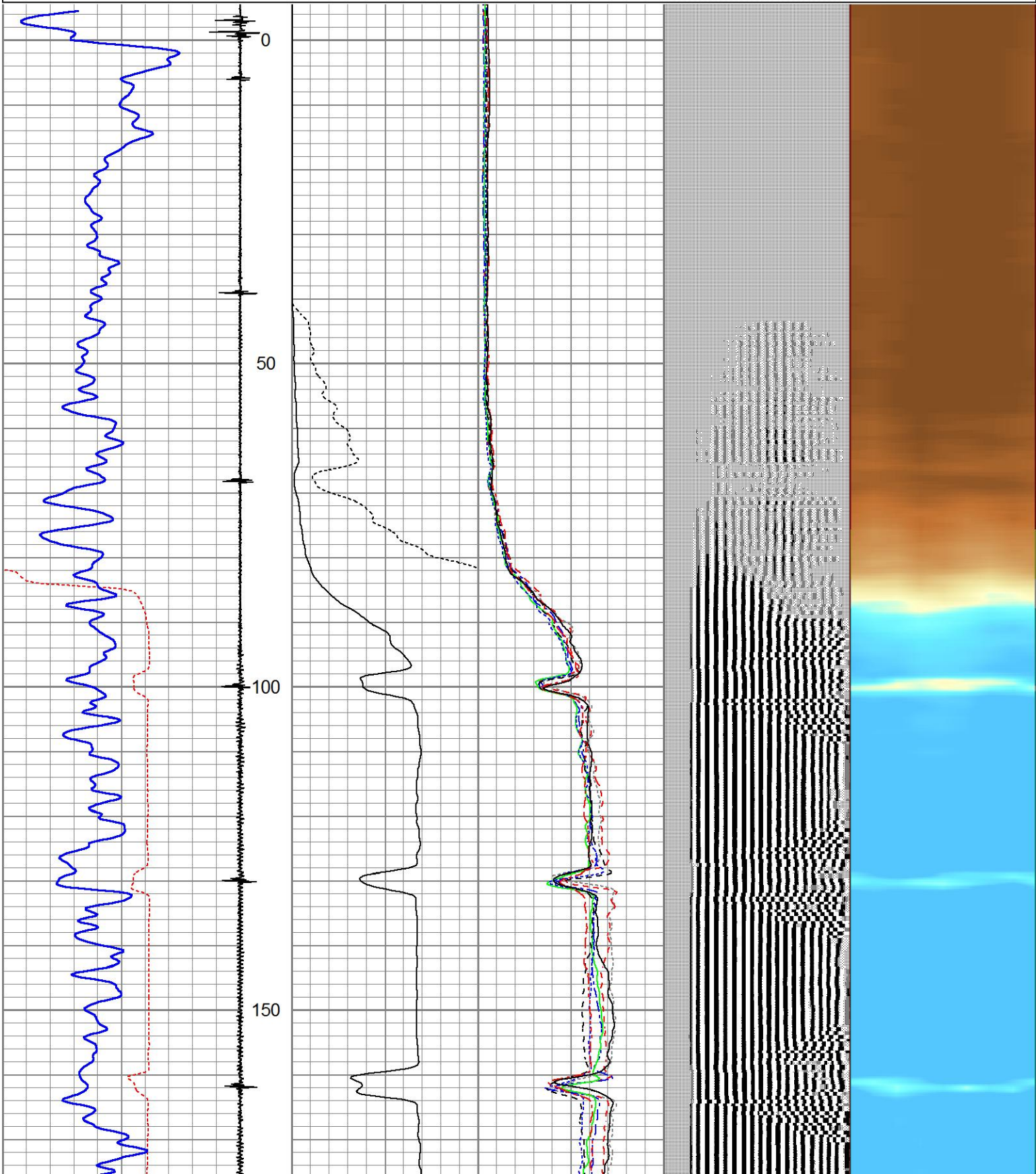
-5 AMPS3 150

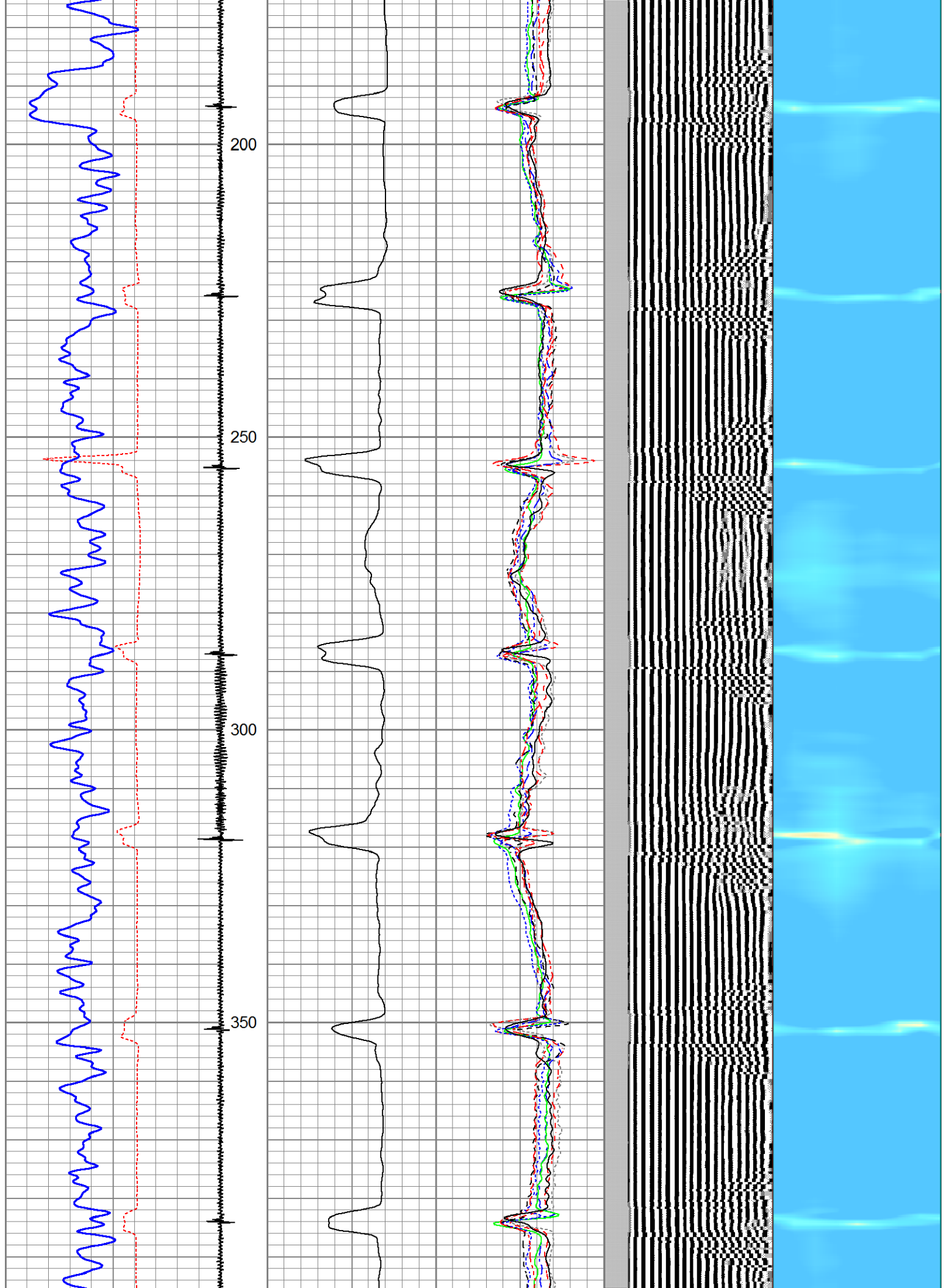
-5 AMPS2 150

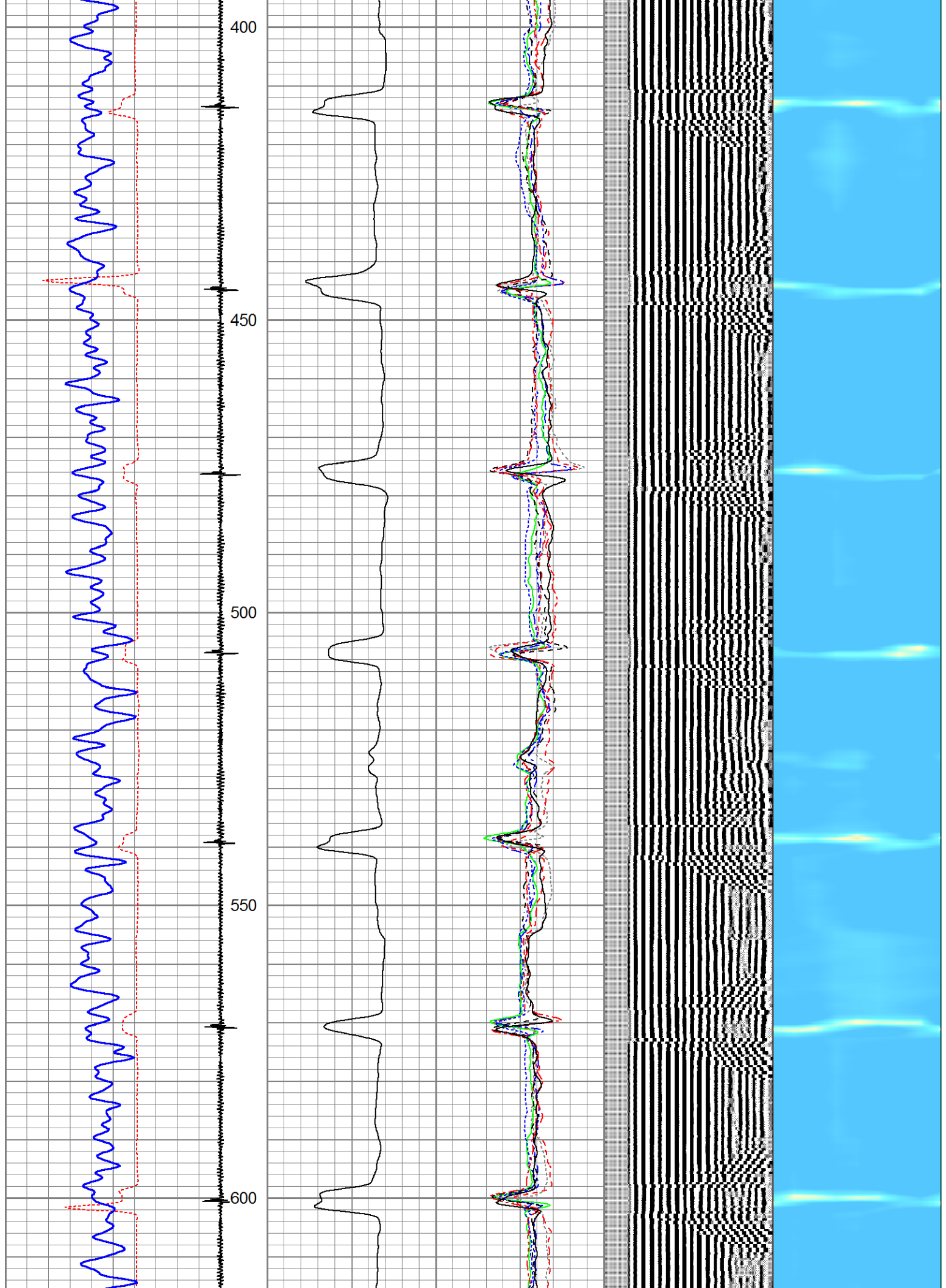
-5 AMPS1 150

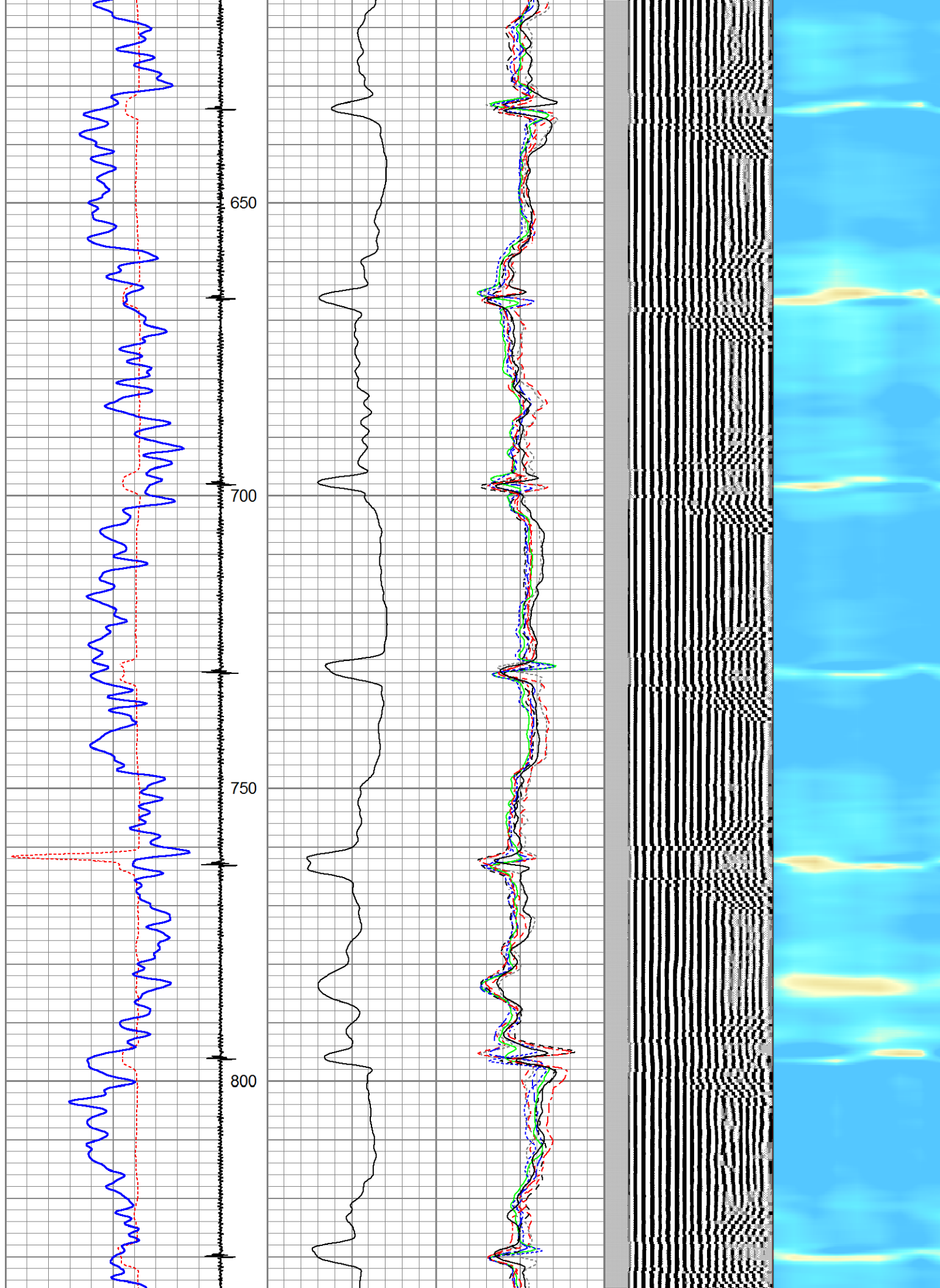
200 VDL (usec) 1200

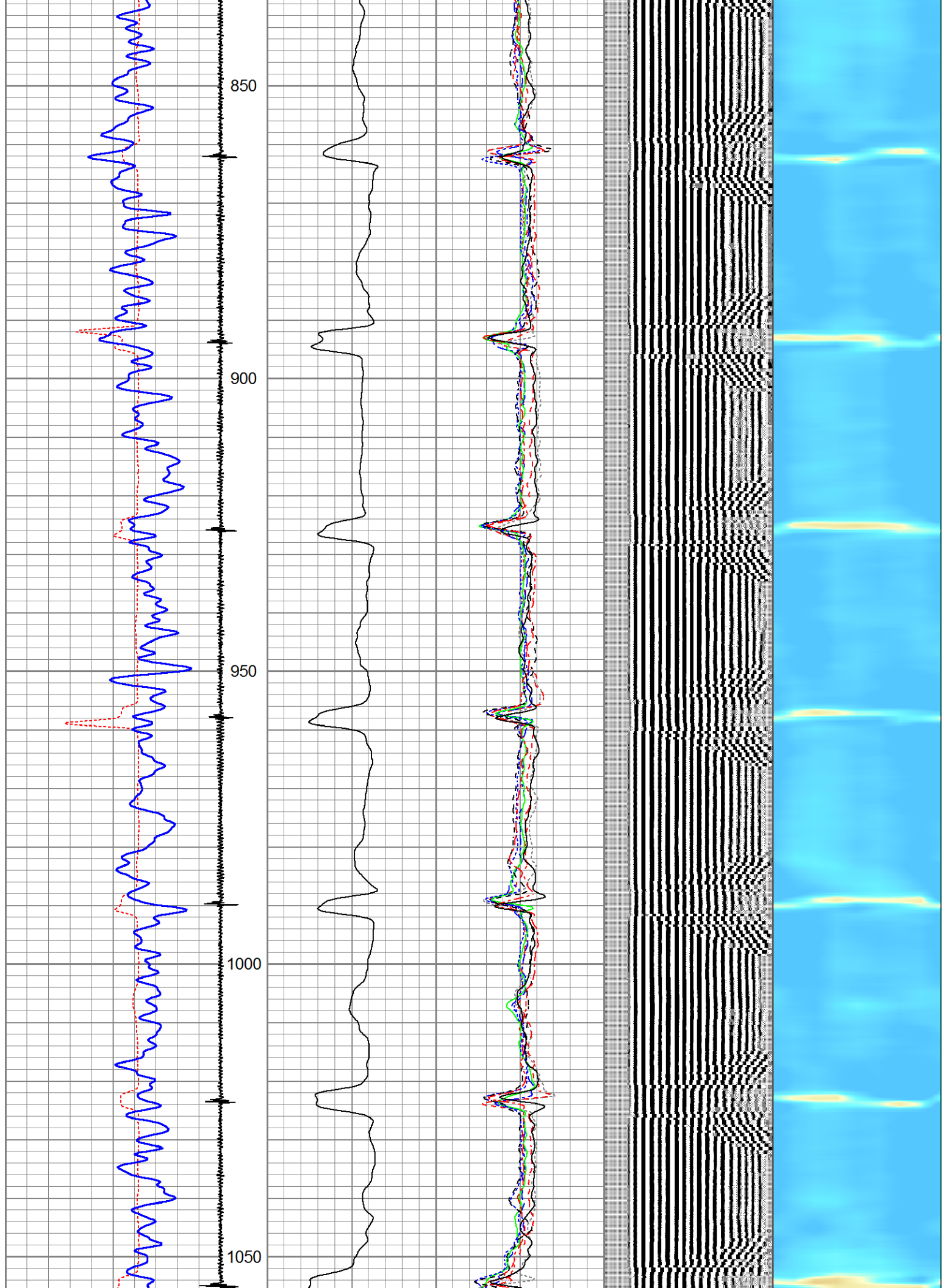
Cement Map

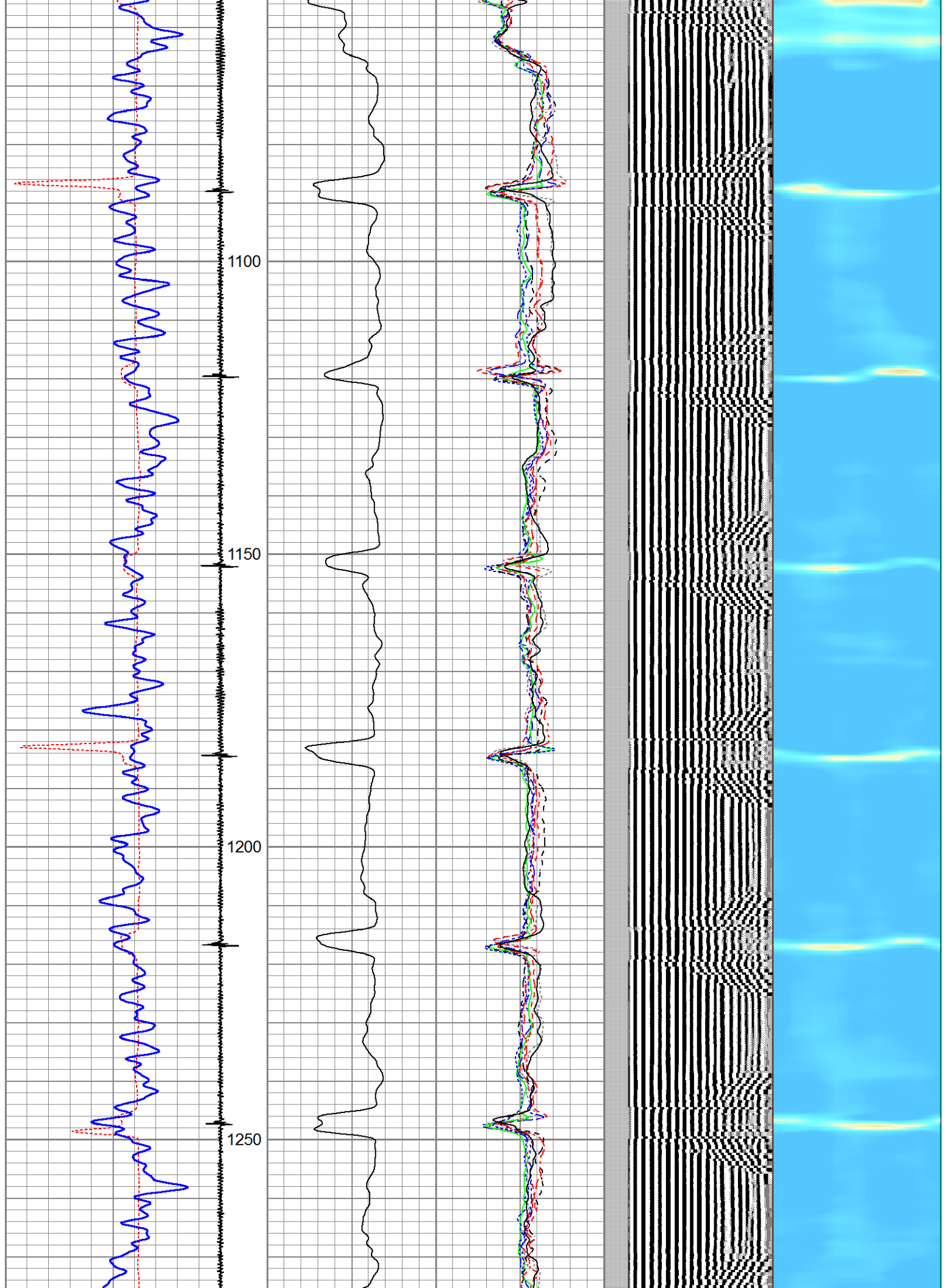


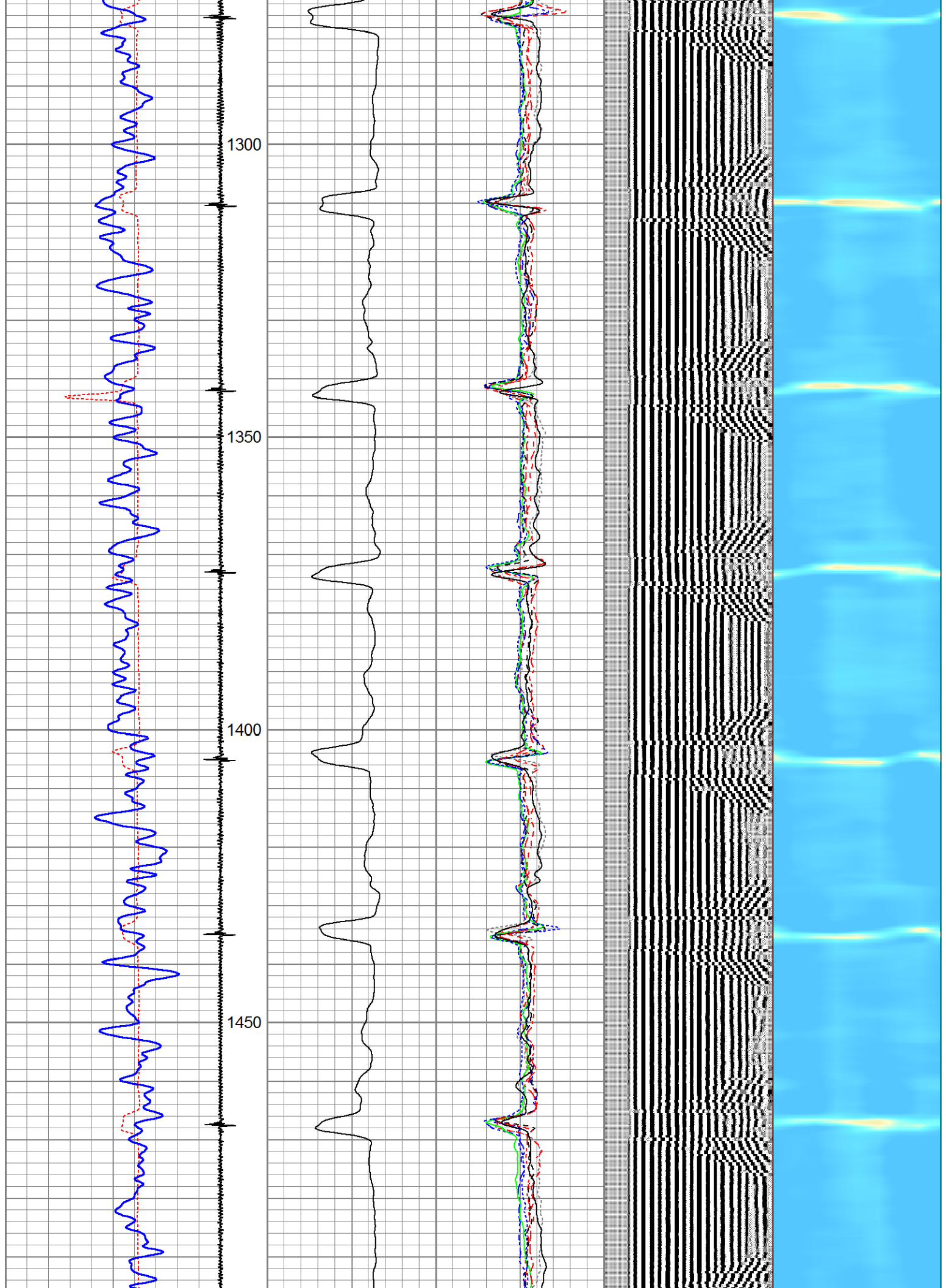


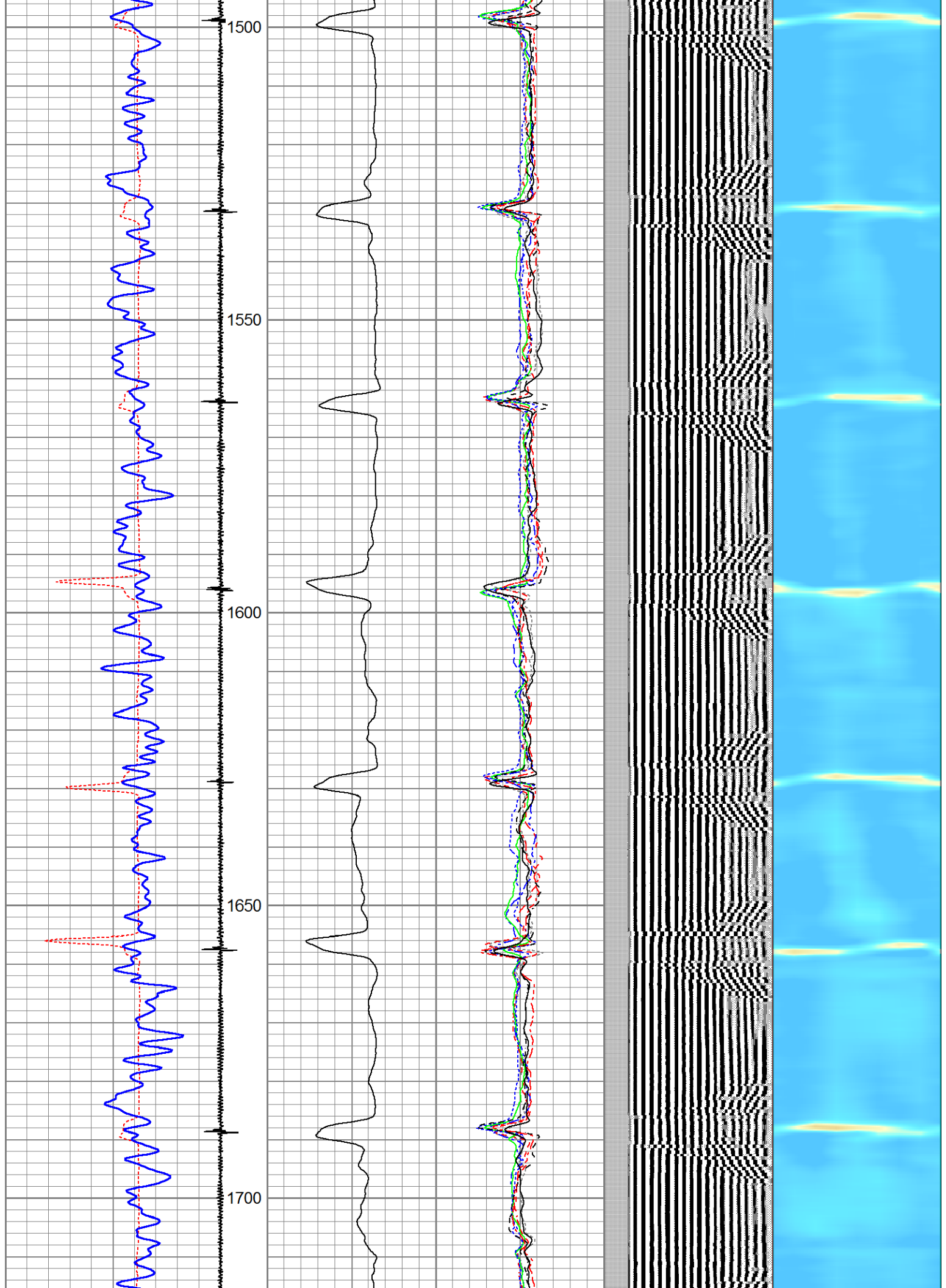


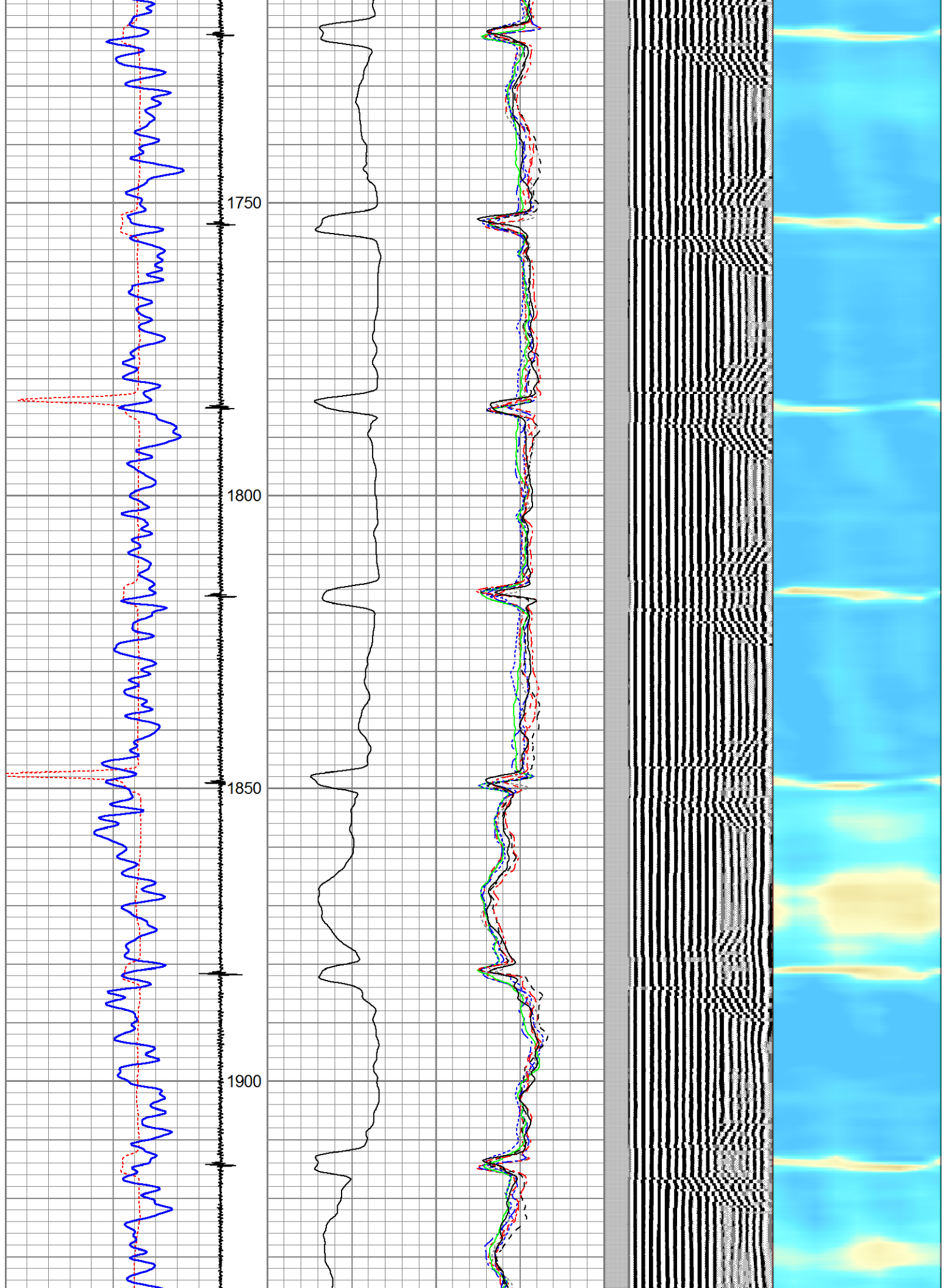


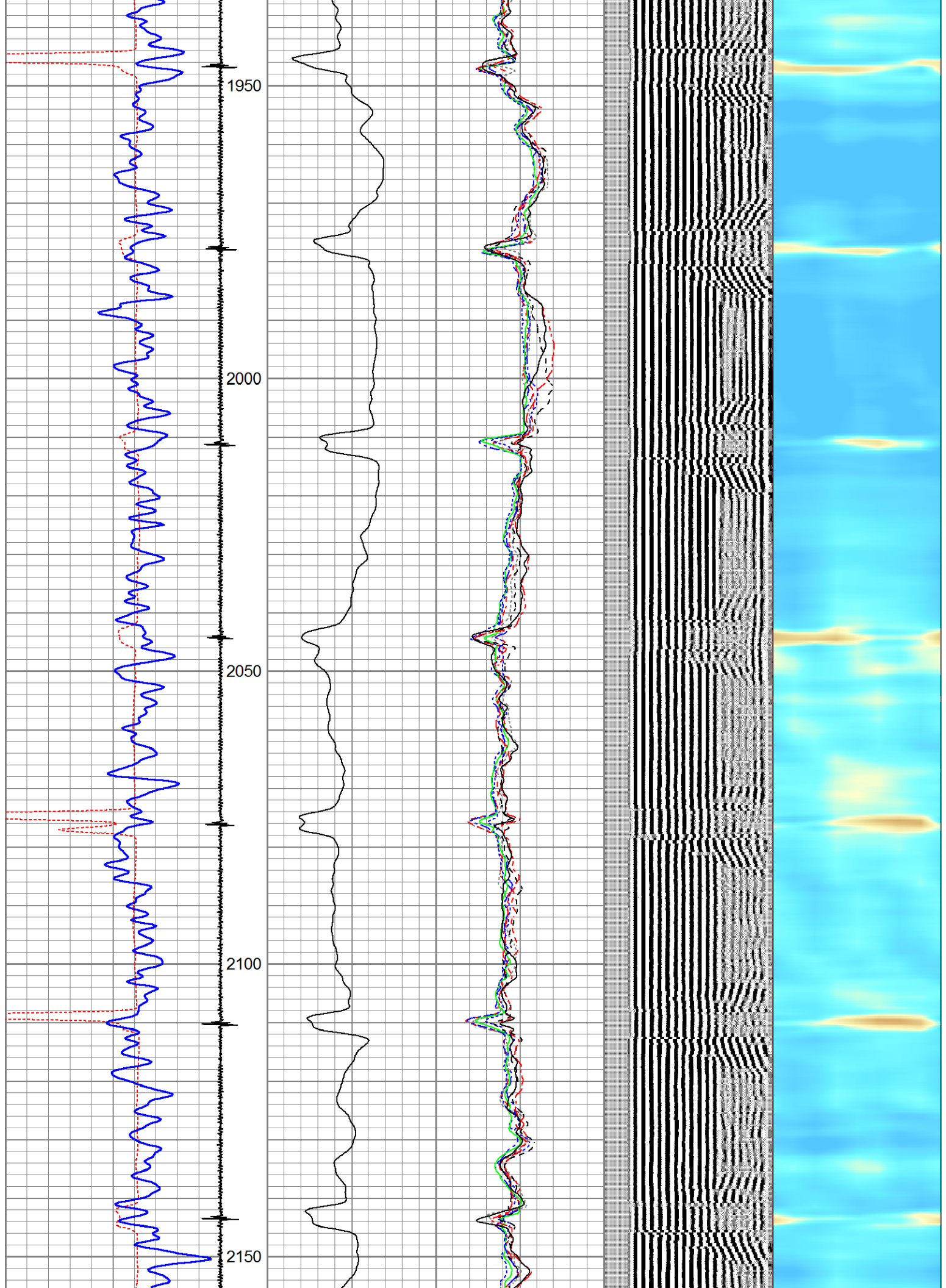


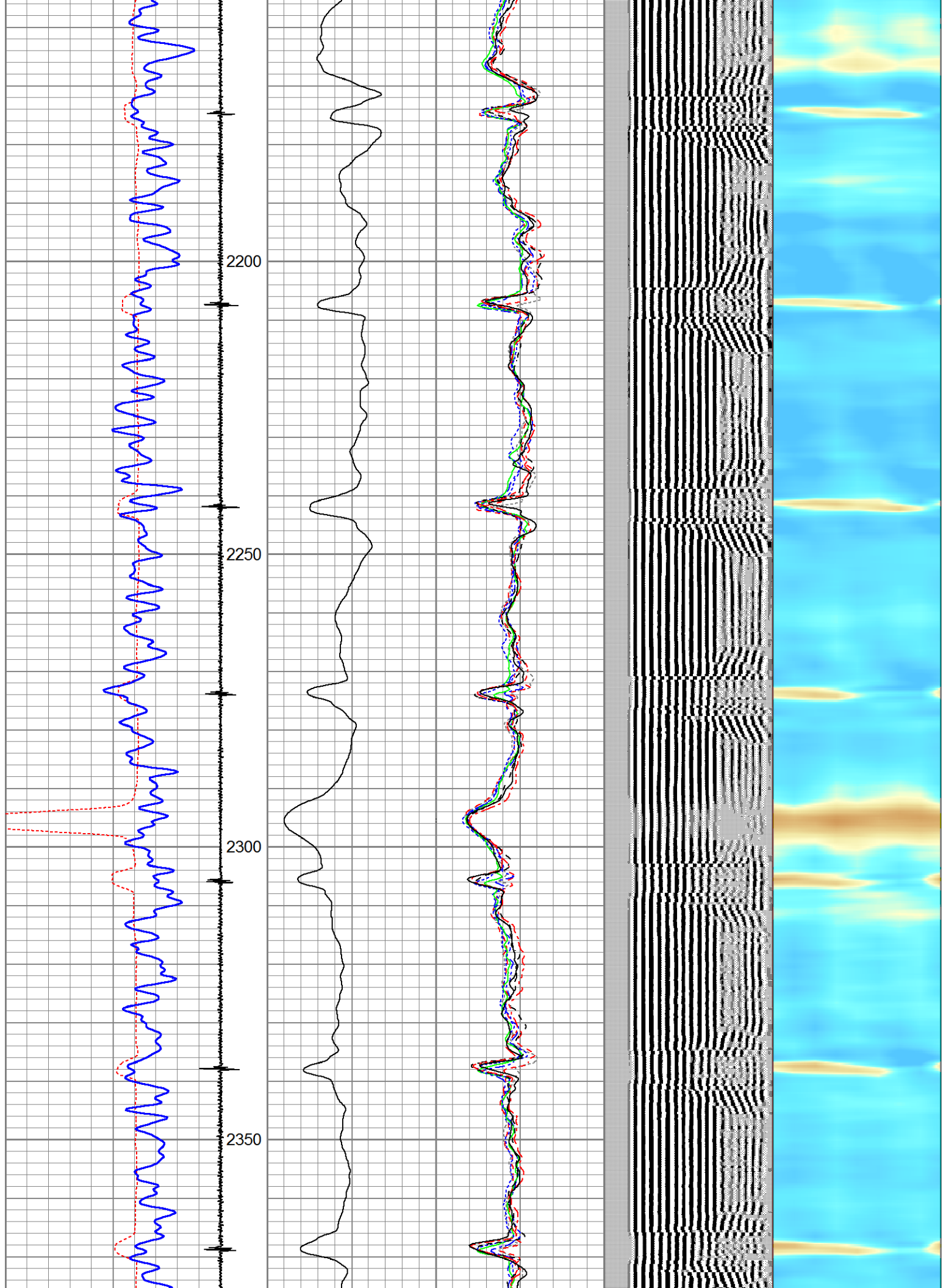


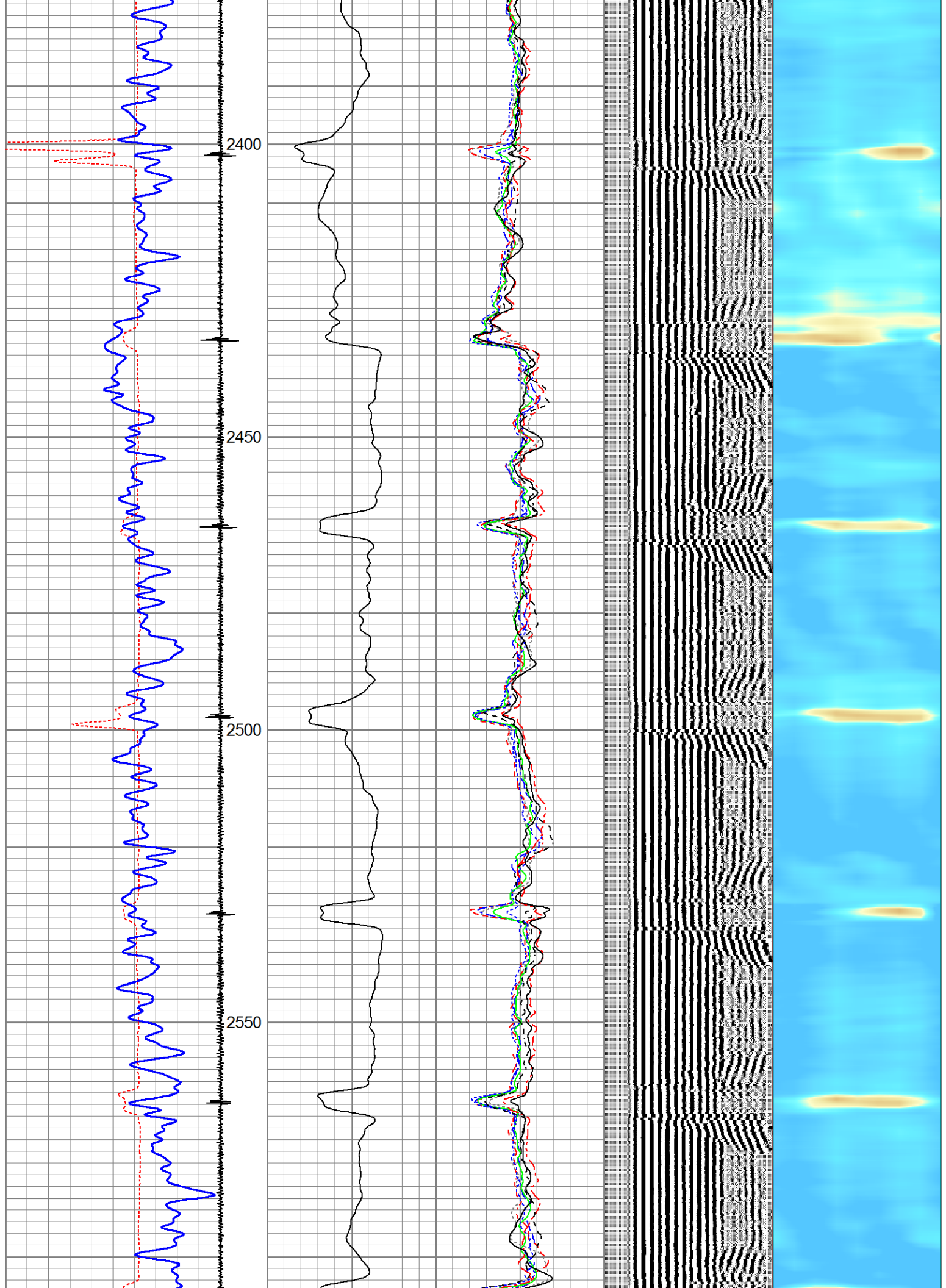


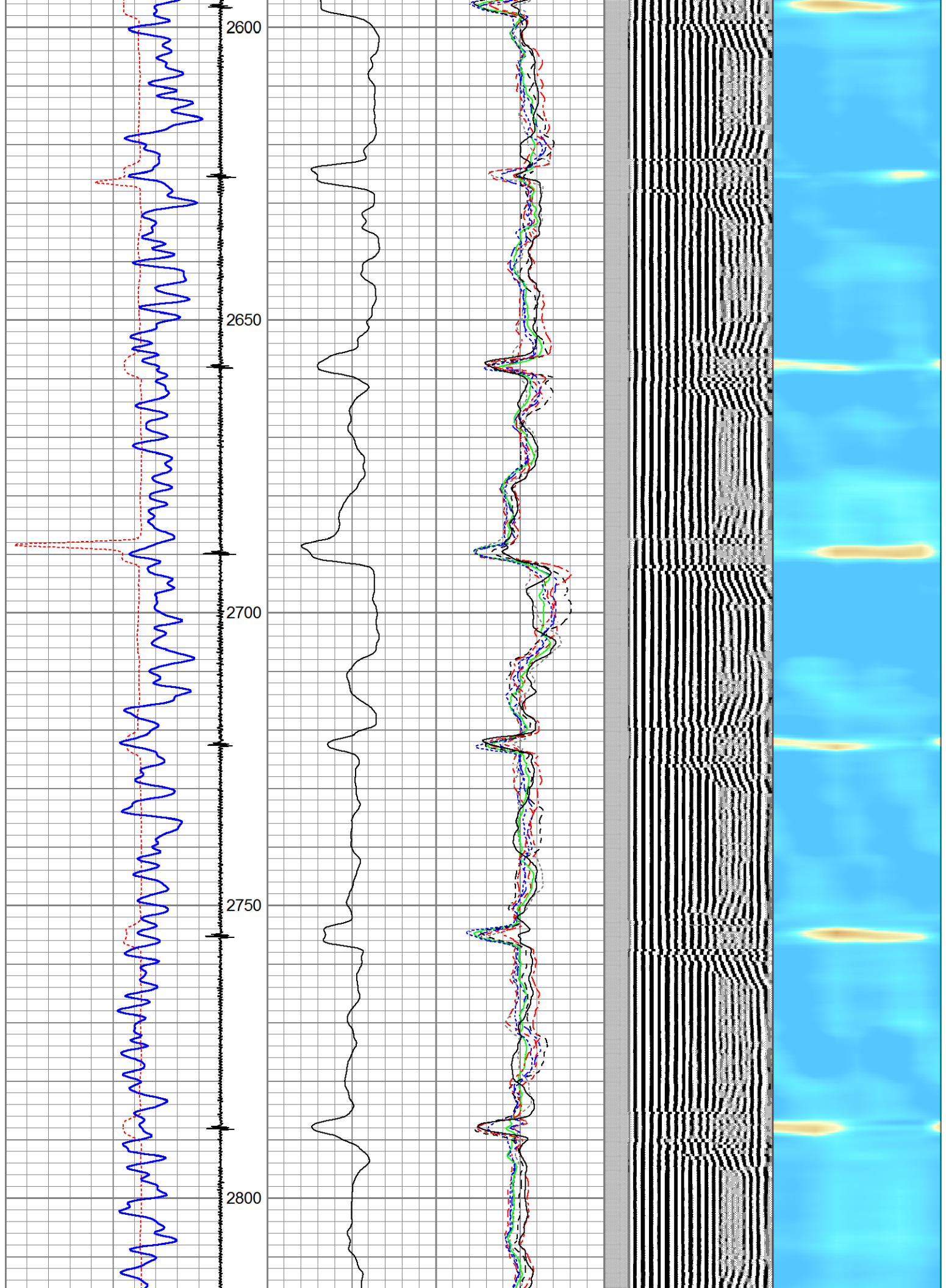


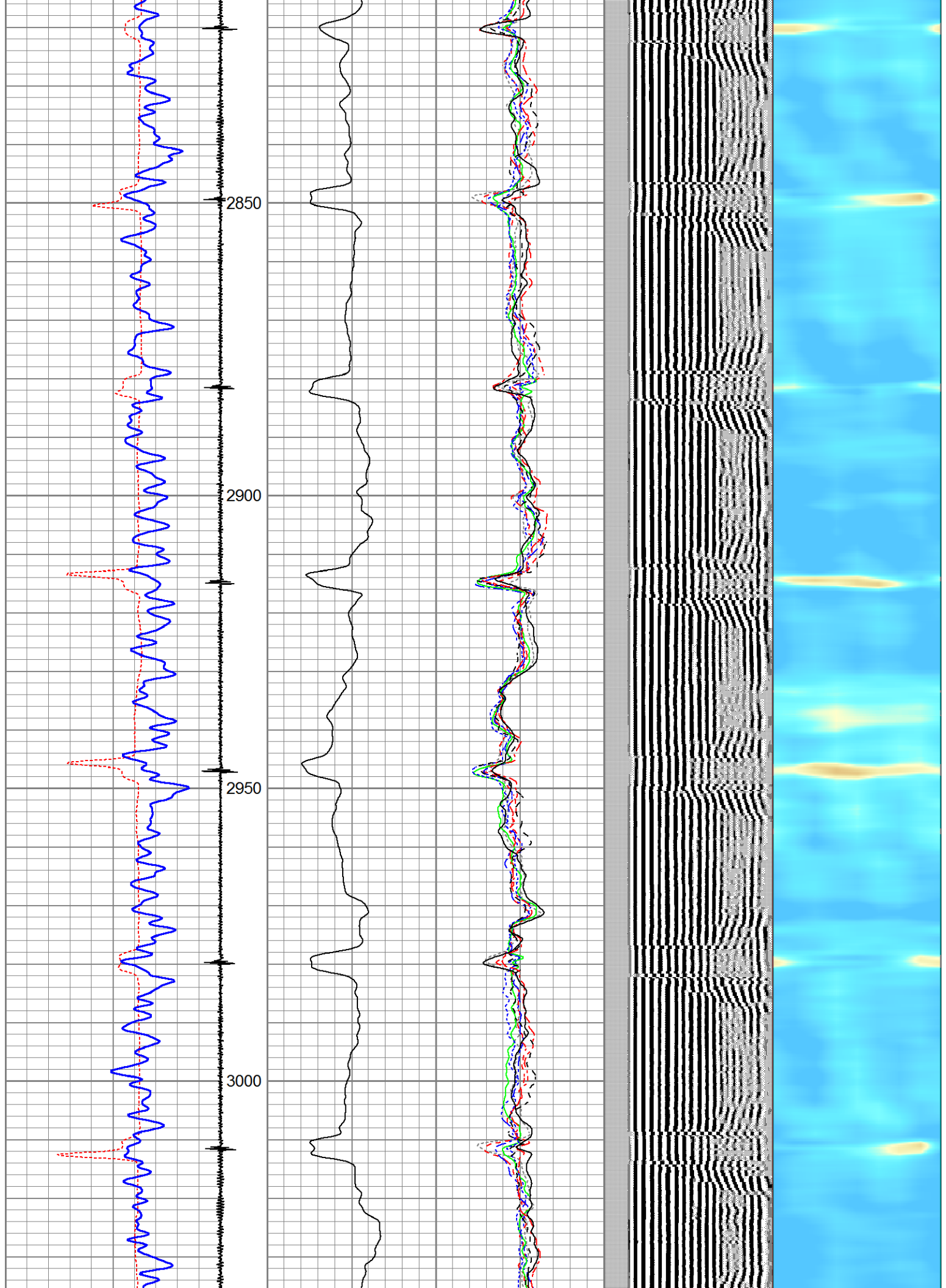


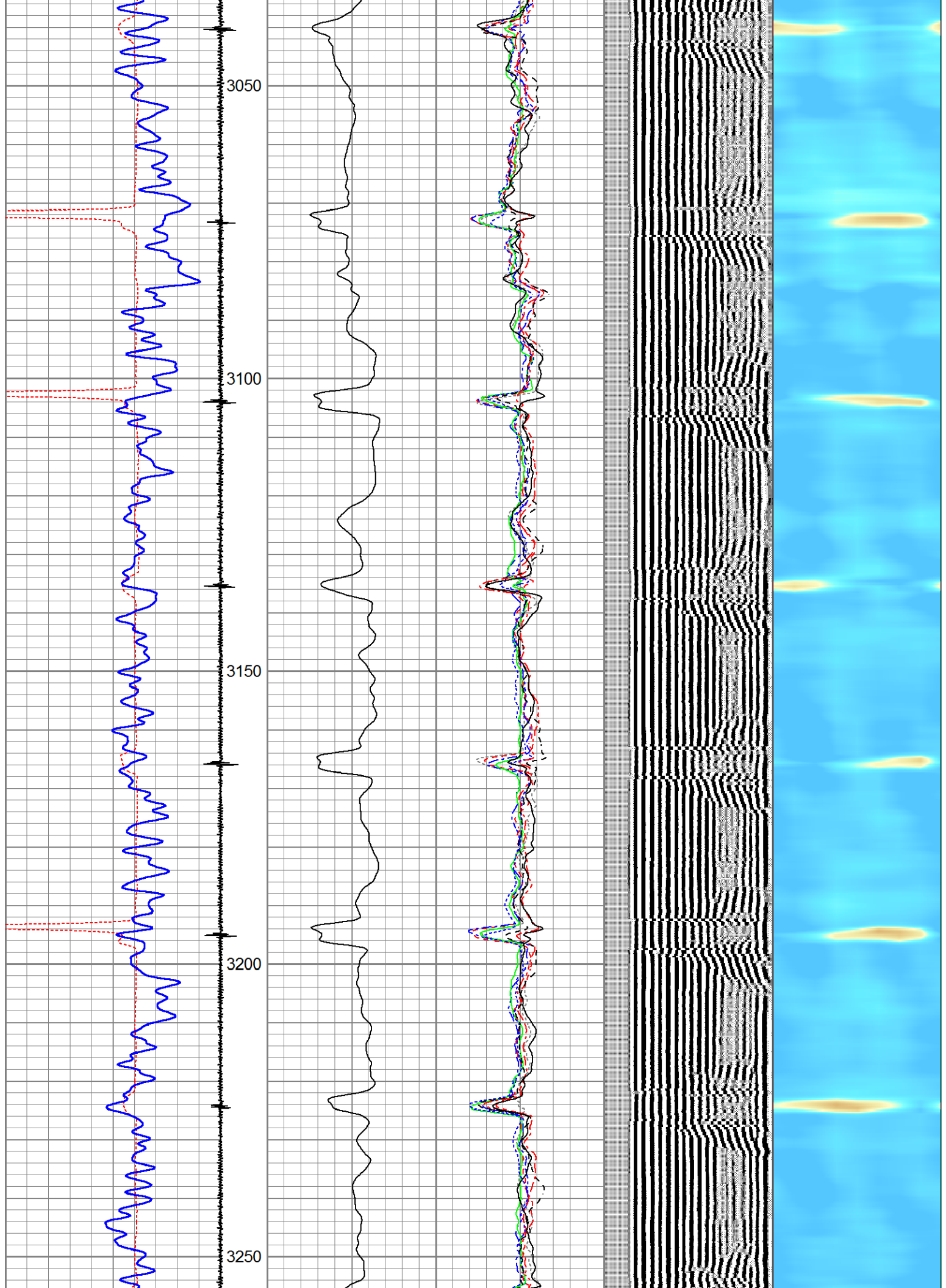


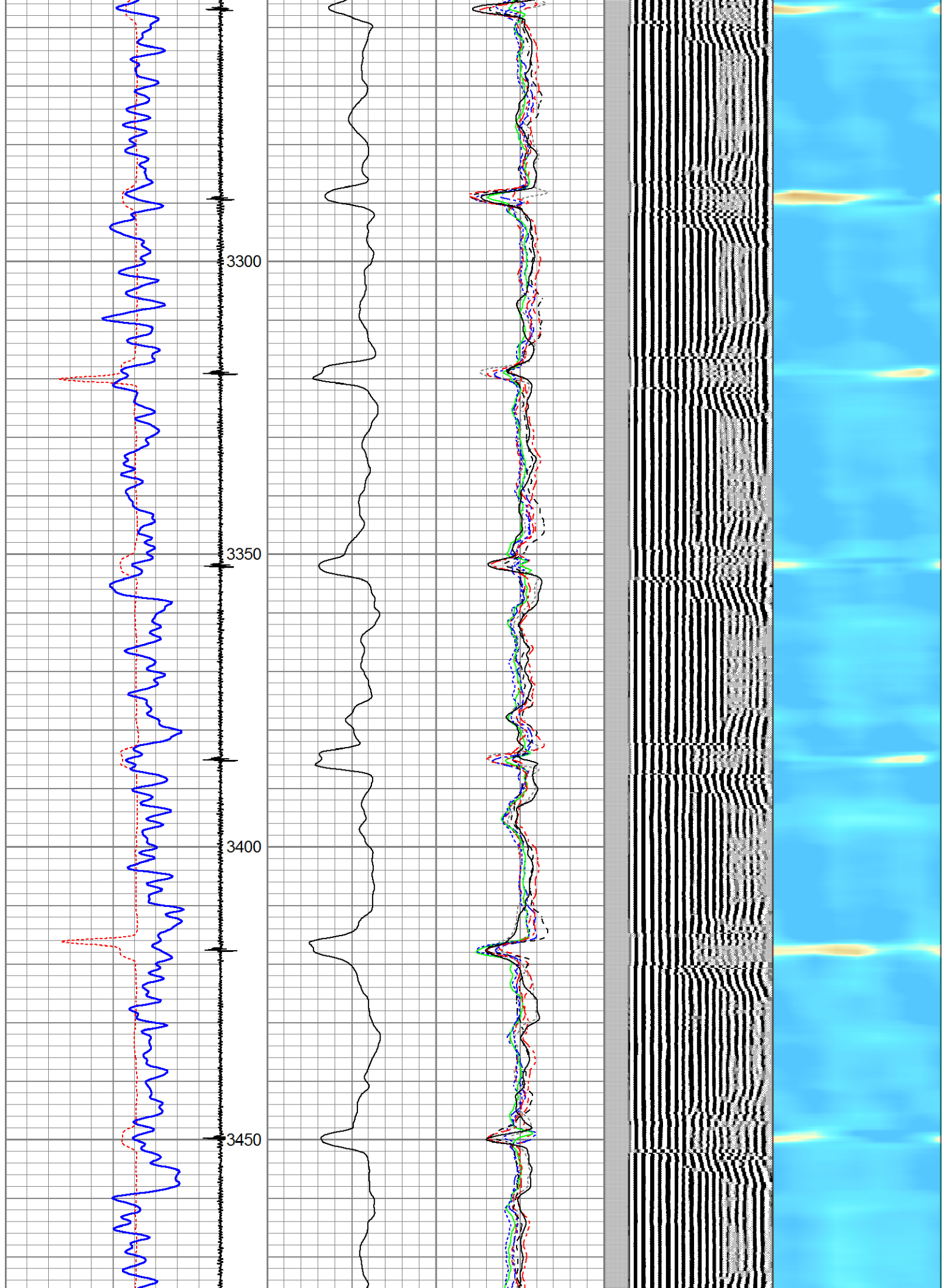


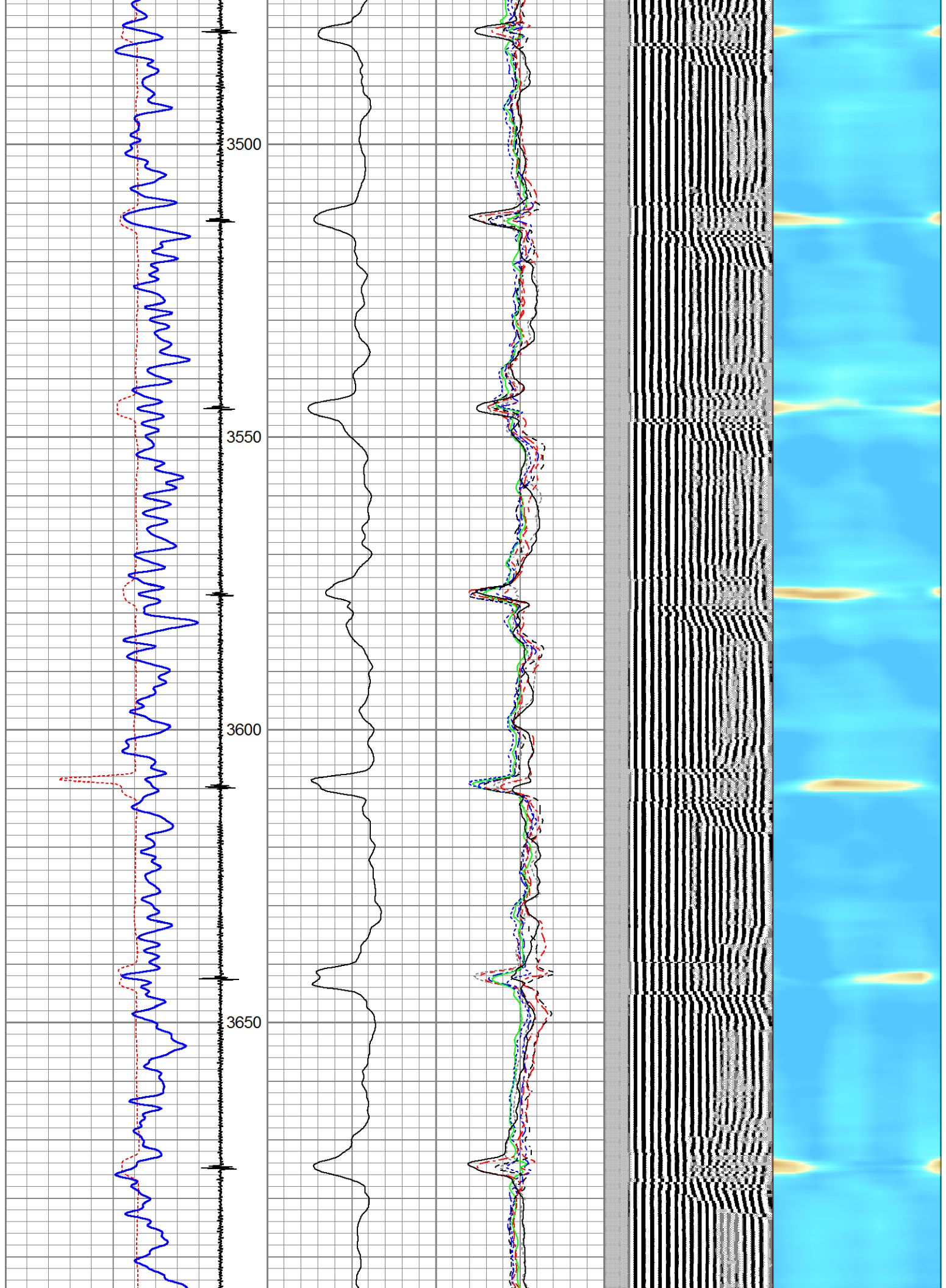


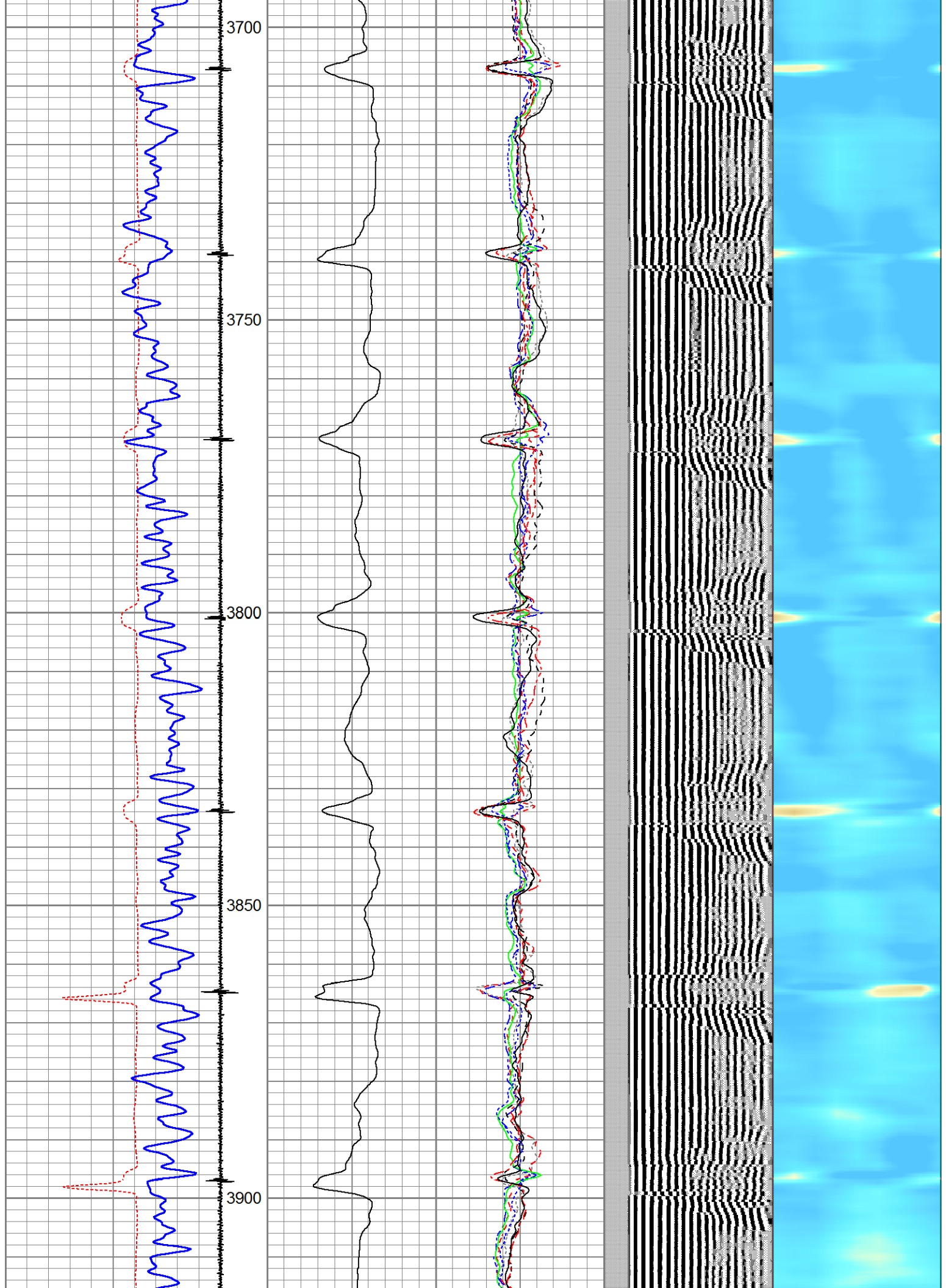


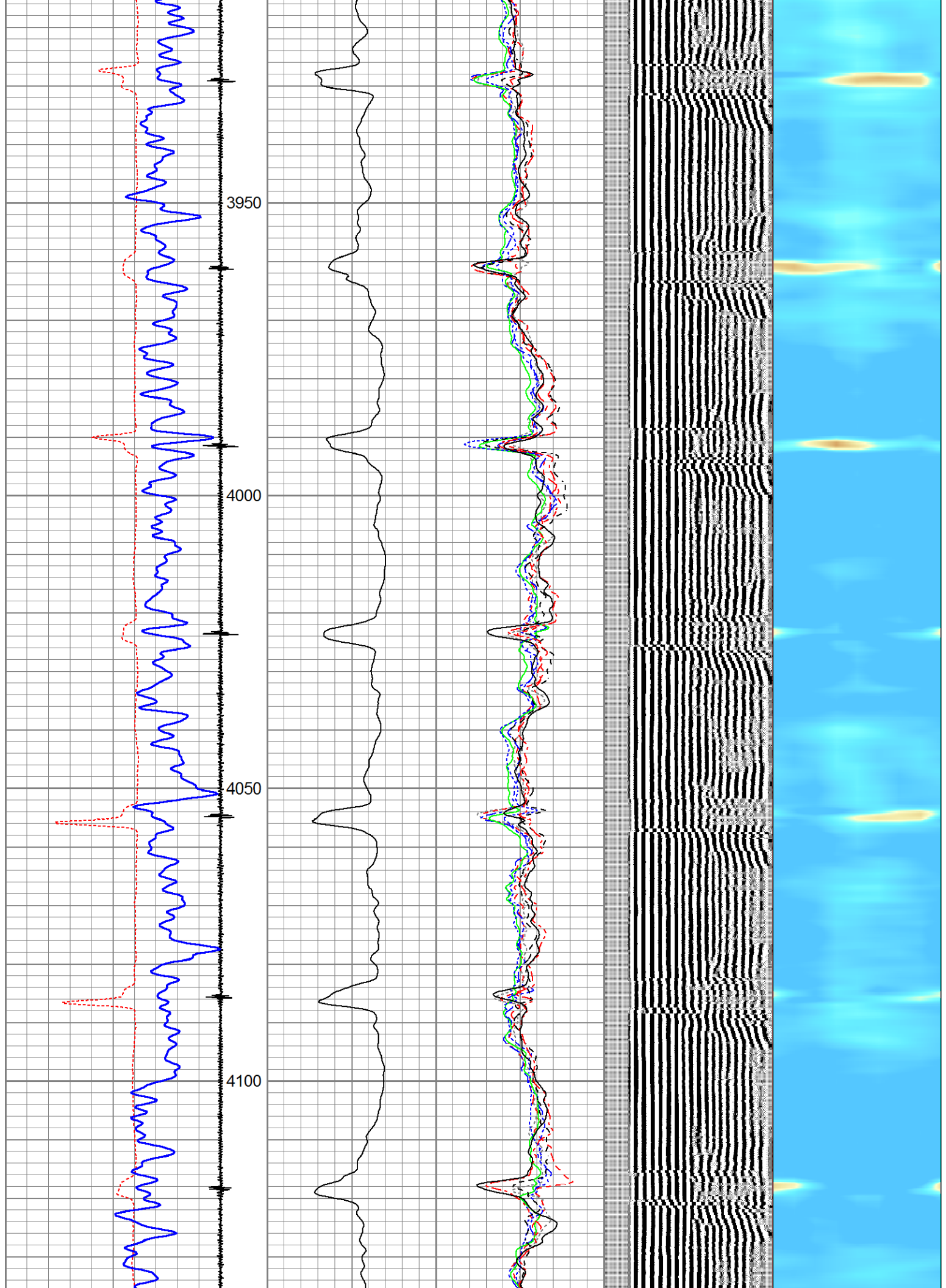


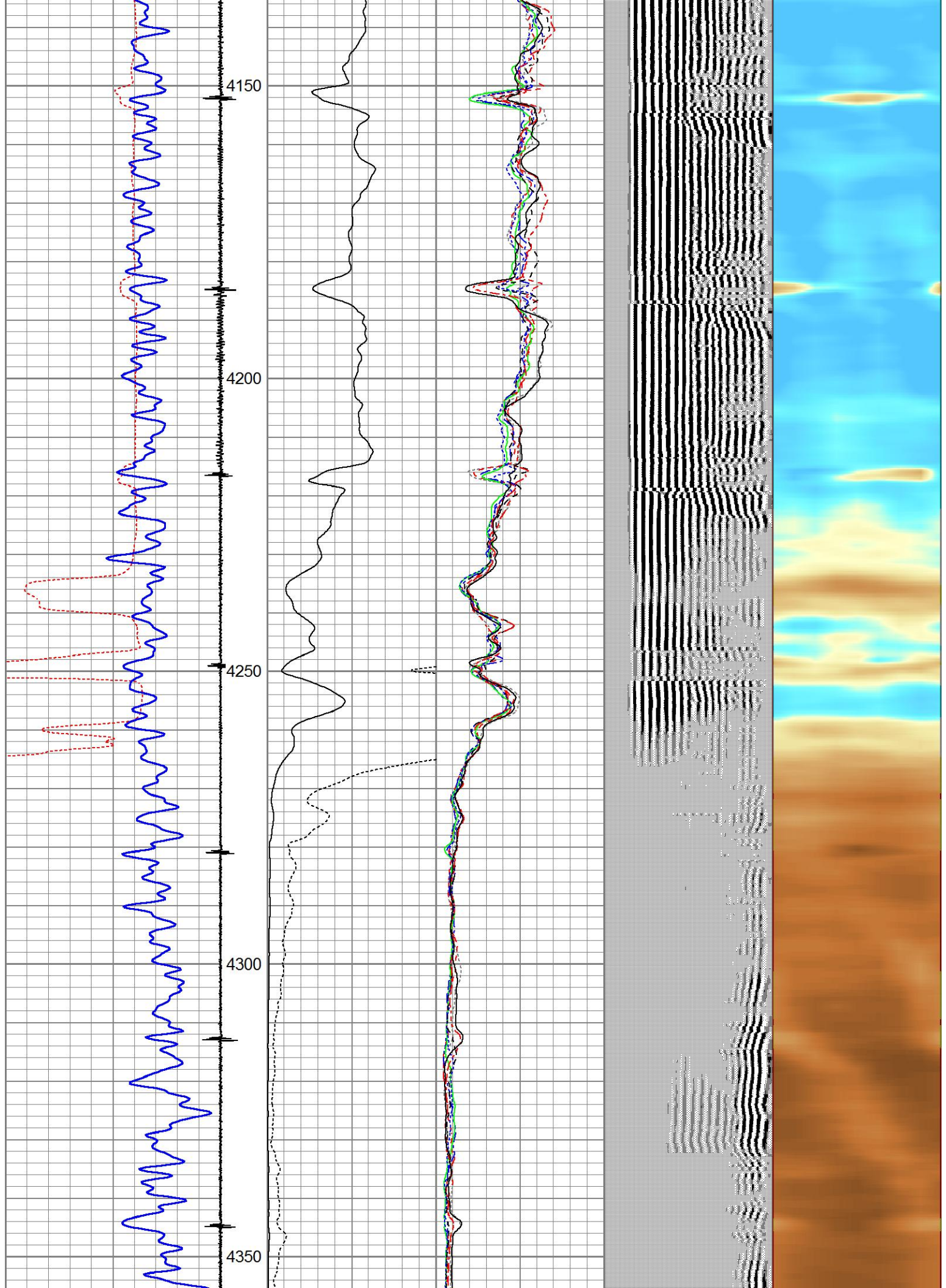


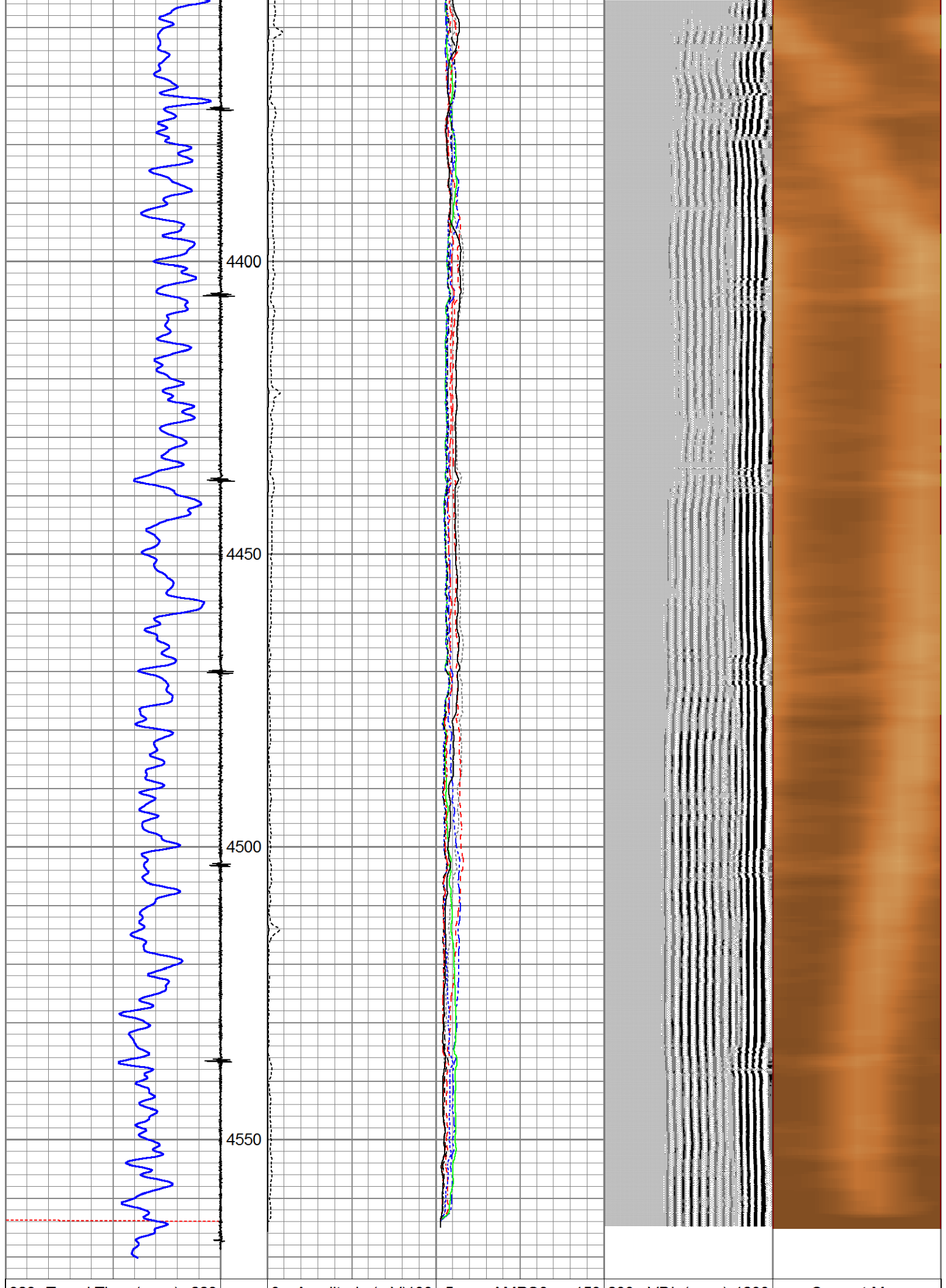


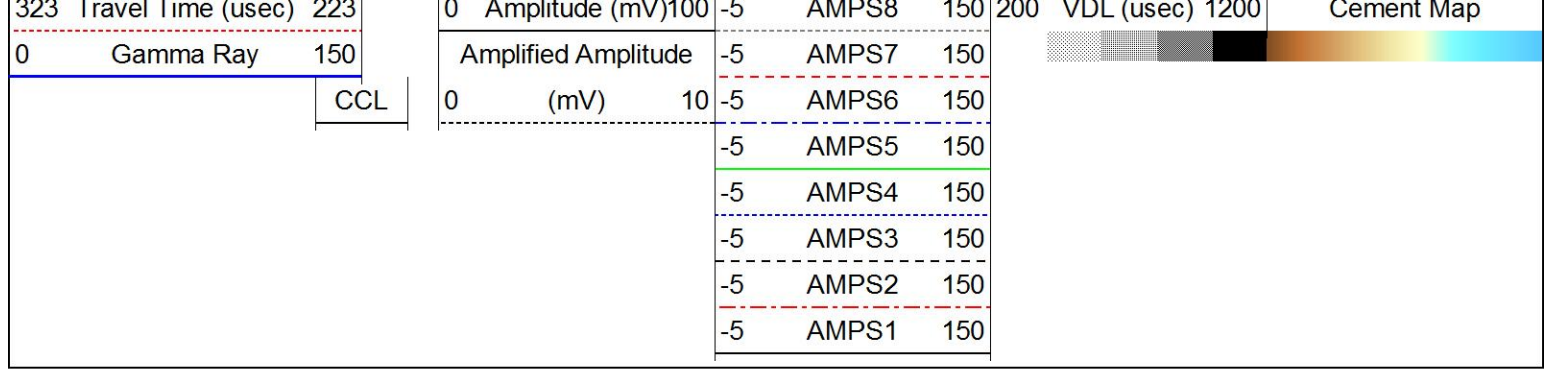










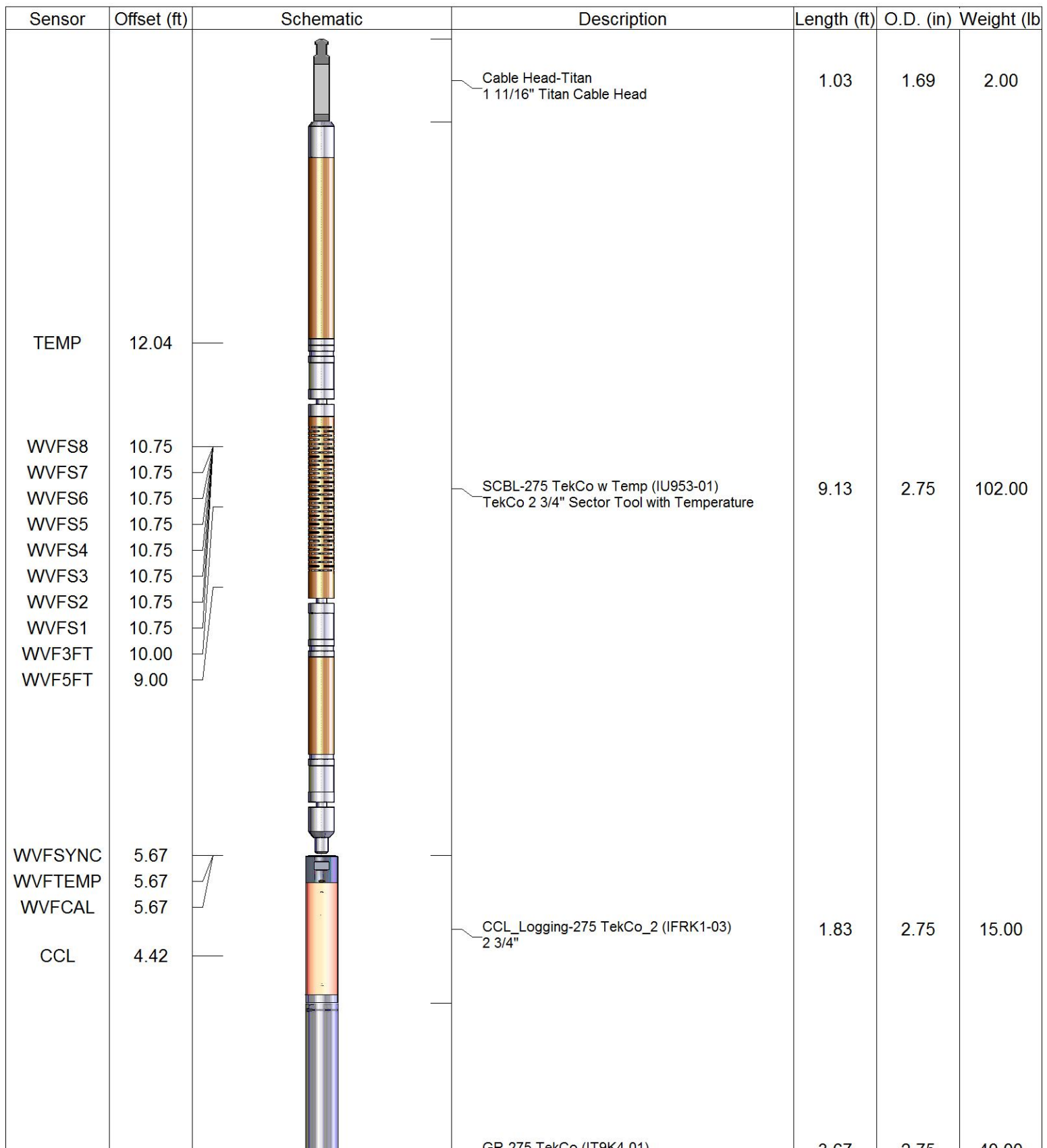


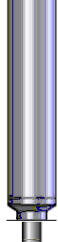
200

VDL (usec)

1200

Cement Map



GR	1.25		GR-275 TekCo (119K4-01) TekCo 2 3/4" 400 Deg. F Logging Gamma Ray	3.67	2.75	40.00
			Bullnose-Titan GO Pin Pressure Cap	0.17	1.69	1.00

Dataset:
Total length:
Total weight:
O.D.:

cosslett#1.db: field/well/run2/pass9
15.82 ft
160.00 lb
2.75 in