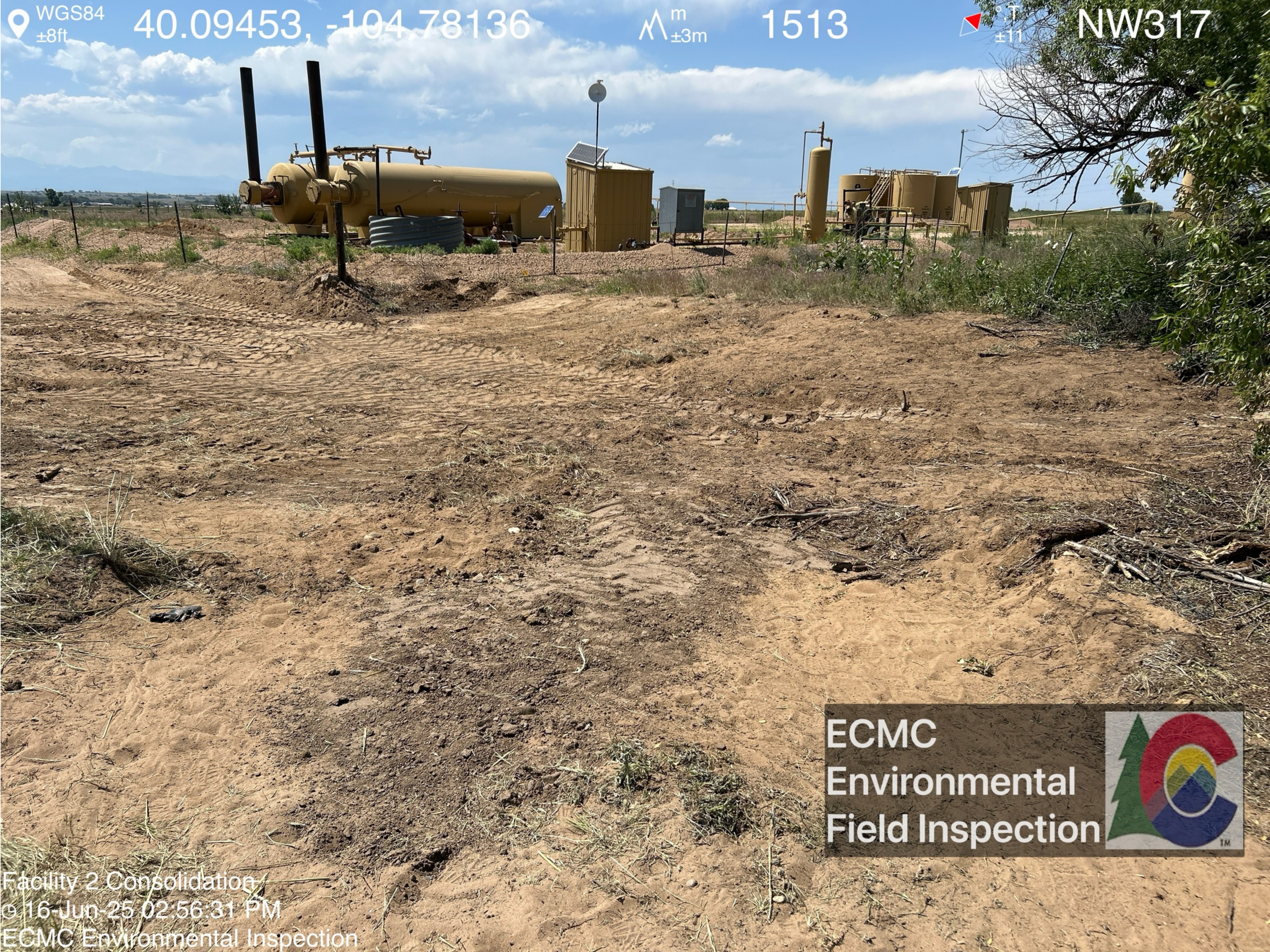




A scarped area with orange construction fencing and equipment is visible. No environmental impacts were visible on the surface in this area.



Approximate spill area. Excavations have been backfilled.



Facility 2 Consolidation
© 16-Jun-25 02:56:54 PM
ECMC Environmental Inspection

Multiple areas of stained soil are visible on the surface of the spill area. A petroleum hydrocarbon odor was observed when the stained soil was disturbed.

WGS84 40.09456, -104.78153 Δ m 1513 Δ °T NW286
±13ft ±3m ±11



ECMC
Environmental
Field Inspection



Facility 2 Consolidation
© 16-Jun-25 02:57:09 PM
ECMC Environmental Inspection

WGS84 40.09455, -104.78144 Δ m 1513 Δ T ° NW313
±14ft ±3m ±11

ECMC
Environmental
Field Inspection



Facility 2 Consolidation
© 16-Jun-25 02:57:33 PM
ECMC Environmental Inspection

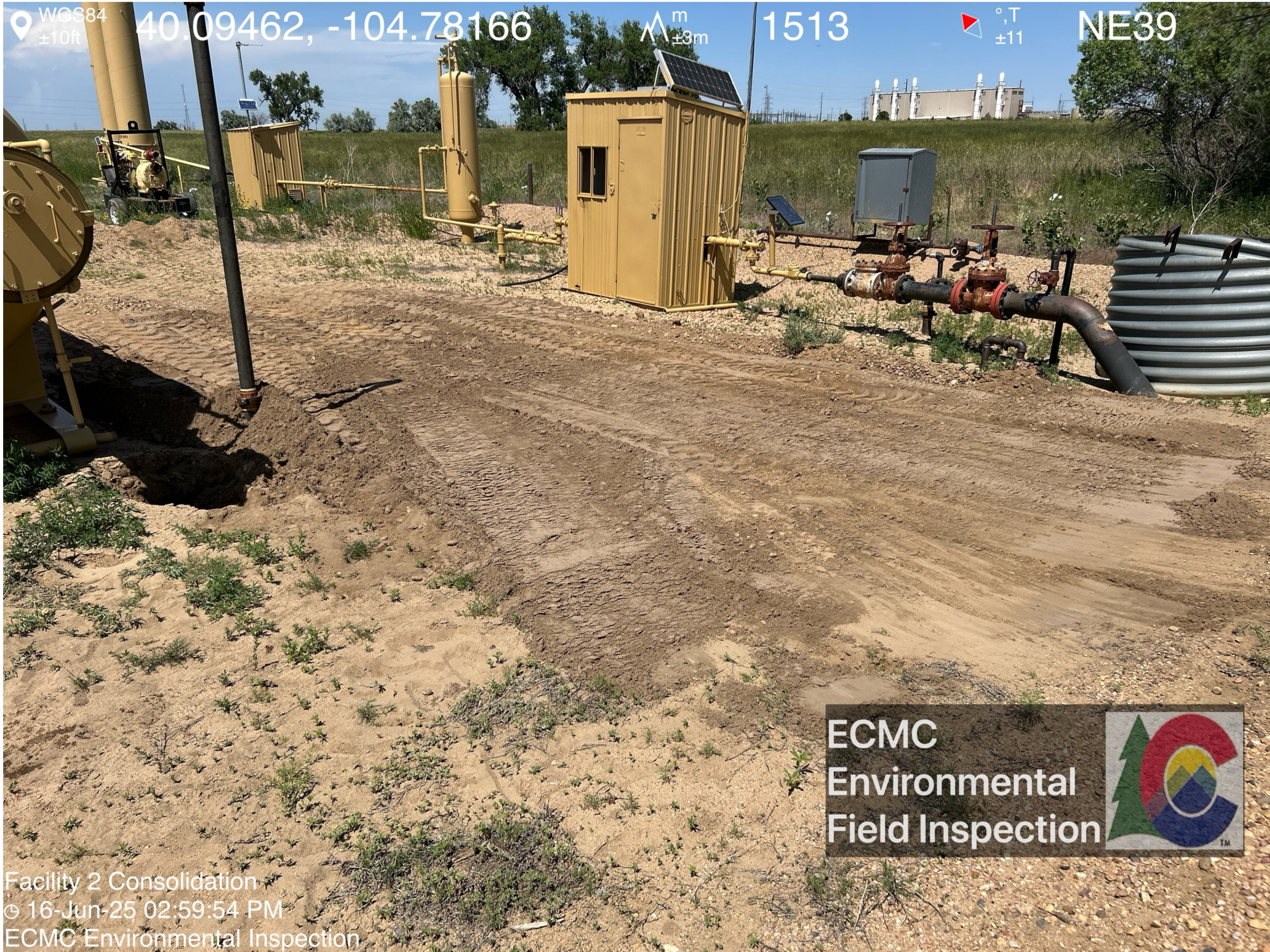
WGS84 40.09462, -104.78149  m ±3m 1513  °T ±11 SE155



ECMC
Environmental
Field Inspection



Facility 2 Consolidation
16-Jun-25 02:58:25 PM
ECMC Environmental Inspection



Facility 2 Consolidation
© 16-Jun-25 02:59:54 PM
ECMC Environmental Inspection

Approximate spill area.

WGS84 40.09464, -104.78163 Δ ± 14 ft Δ ± 3 m 1513 Δ ± 11 °,T NW308



ECMC
Environmental
Field Inspection



Facility 2 Consolidation
© 16-Jun-25 03:00:09 PM
ECMC Environmental Inspection

A small area of ground disturbance was visible adjacent to the eastern separator.

WGS84 $\pm 14\text{ft}$ 40.09474, -104.78184 $\pm 4\text{m}$ 1513 ± 11 SE130



ECMC
Environmental
Field Inspection



Facility 2 Consolidation
© 16-Jun-25 03:01:33 PM
ECMC Environmental Inspection

An unmarked soil stockpile was visible on location. No stormwater BMPs or liners were visible.