

GM 229-34 Wellbore Diagram

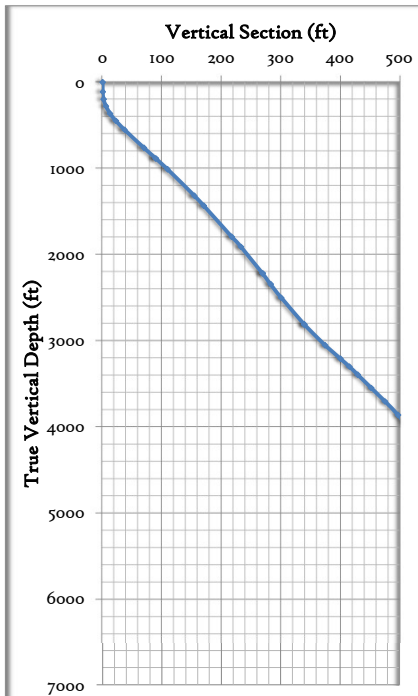
Last Updated: 6/17/2025



Well	County		API	
GM 229-34	Garfield		05-045-07712	
Location	Spud Date	PBTD	TD	Surf TOC
NESW 34 6S96W	4/24/2001	6,449	6,532	0
Mineral/Surface	Lease #	Top Perf	Bot Perf	Prod TOC
FEE	FEE	5,338	6,396	3,800

Wellbore details				
CASING DETAIL	Depth	Size	Weight	Grade
Conductor Csg	0	0	0.0	
Cement	NA			
Hole size	Notes:			
	Depth	Size	Weight	Grade
Surface Csg	594	9 5/8	32.0	H-40
Cement	360 sks			
Hole size	13 1/2 Notes:			
	Depth	Size	Weight	Grade
Prod Csg	6,515	4 1/2	11.6	I-80
Cement	900 sks			
Hole size	7 7/8 Notes:			
TUBING DETAIL	6,194	0		
Current EOT	81%	Notes:		

Formation Top	Depth (ft)
Wasatch G	1,660
Fort Union	1,960
MesaVerde	3,401
Cameo	5,934
Rollins	6,464



Stages and Perf intervals	Formation Tops	Wellbore Details
		Surf TOC: 0 VISU
		Surf Csg: 9-5/8" 32# H-40 set @ 594'
		Hole Size: 13-1/2"
		Cement: 360 sks
	Wasatch G 1,660	
	Fort Union 1,960	
	MesaVerde 3,401	
		Prod TOC: 3,800 CBL
		Tubing: 0" # set @ 6194'
5,338 5,582 MV 2		
5,664 5,981 MV 1		
6,190 6,396 Cameo	Cameo 5,934	Prod Csg: 4-1/2" 11.6# I-80 set @ 6515'
	Rollins 6,464	Hole Size: 7-7/8"
		Cement: 900 sks
PBTD: 6,449	TD: 6,532	