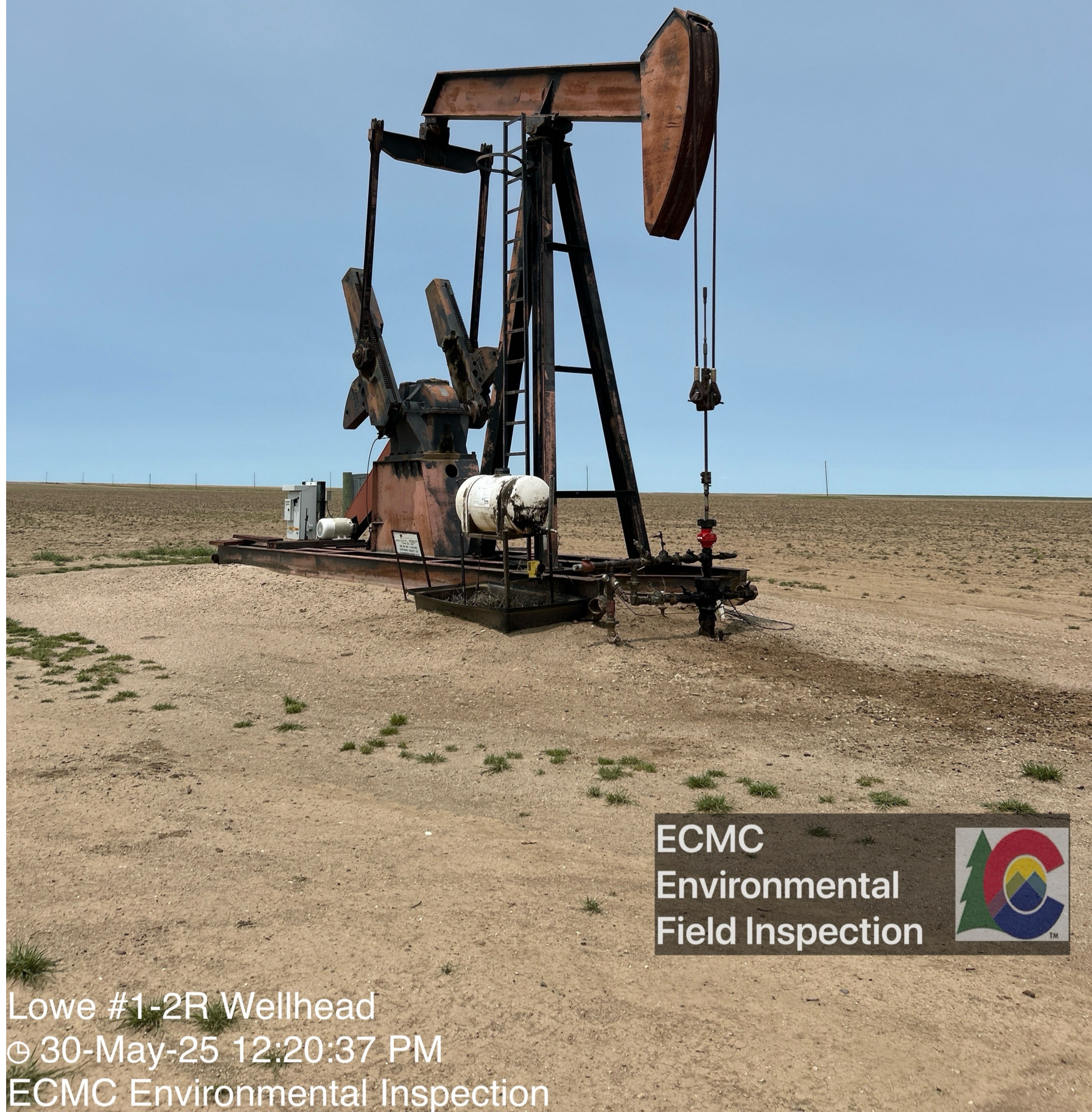


WGS84 $\pm 10\text{ft}$ 38.69399, -102.42754 $\pm 3\text{m}$ 1336 ± 11 °, T NW306



ECMC
Environmental
Field Inspection



Lowe #1-2R Wellhead
© 30-May-25 12:20:37 PM
ECMC Environmental Inspection

WGS84 38.69403, -102.42767 Δ^m $\pm 11\text{ft}$ $\pm 3\text{m}$ 1335 $^\circ\text{T}$ ± 11 N345



ECMC
Environmental
Field Inspection



Lowe #1-2R Wellhead
© 30-May-25 12:20:57 PM
ECMC Environmental Inspection

Signage with emergency contact number is visible. Portions of the sign including, the API number, are illegible.

WGS84 38.69407, -102.42764 m 1336 °, T SW238
±11ft ±3m ±11



Lowe #1-2R Wellhead
© 30-May-25 12:21:42 PM
ECMC Environmental Inspection

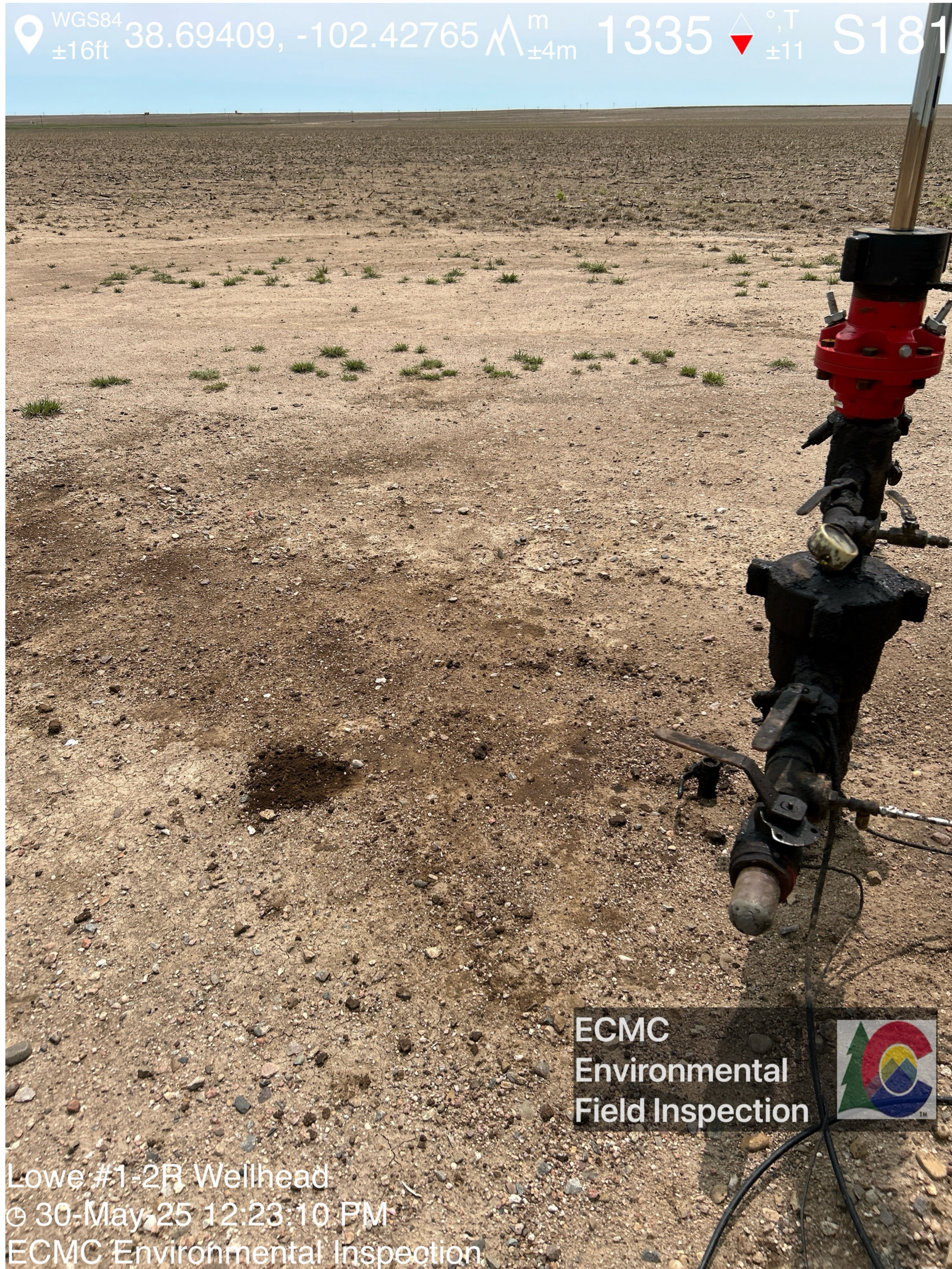
Petroleum hydrocarbon fluid residue is visible on the wellhead and connections. Black staining is visible on the plastic tank adjacent to the wellhead.



Lowe #1-2R Wellhead
© 30-May-25 12:23:03 PM
ECMC Environmental Inspection

Stained soil is visible adjacent to the wellhead. A petroleum hydrocarbon odor was observed when the stained soil was disturbed.

WGS84 38.69409, -102.42765 Δ ^m_{±4m} 1335 Δ ^{°T}_{±11} S181



ECMC
Environmental
Field Inspection



Lowe #1-2R Wellhead
© 30-May-25 12:23:10 PM
ECMC Environmental Inspection

WGS84 38.69405, -102.42757 Δ m ± 6 m 1335 \triangleleft \circ , T ± 11 W270



ECMC
Environmental
Field Inspection



Lowe #1-2R Wellhead
© 30-May-25 12:23:27 PM
ECMC Environmental Inspection

WGS84 $\pm 19\text{ft}$ 38.69406, -102.42782 $\Delta^m_{\pm 5\text{m}}$ 1336 $\triangle^{\circ, T}_{\pm 11}$ E85



ECMC
Environmental
Field Inspection



Lowe #1-2R Wellhead
© 30-May-25 12:24:14 PM
ECMC Environmental Inspection