

WGS84 37.37171,
±7ft -102.24069

M^m
±3m 1189

°T
±10 S193



ECMC
Environmental
Field Inspection



Tate Tank (479916)
© 04-Jun-25 12:27:13

Meter shed leaning/not level. - requires maintenance.

WGS84 37.37171,
±8ft -102.24068

1188 m
±3m

°T
±10 SE153



Tate Tank (479916)
© 04-Jun-25 12:27:16

Cattle carcass, weeds, fallen/inadequate signage at separator.

WGS84 37.37171,
±7ft -102.24068

M^m ±3m 1188 °T SE120
±10



Late Tank (479916)
© 04-Jun-25 12:27:20

Weeds/debris, insufficient secondary containment, stained soil, insufficient wildlife protection equipment, tank battery signage illegible.



Hoof, weeds.



Meter shed not level/leaning, placards/signage faded and illegible.



Unlabeled ~55-gallon steel drum without secondary containment/signage, weeds.



Weeds



Separator, weeds, cattle carcass, inadequate secondary containment for produced water tank.



Location signage faded and illegible, wildlife protection equipment (netting) torn and fallen, piping disconnected without LOTO, no secondary containment, no NFPA placard or tank contents/volume labels on ~100 bbl open top fiberglass storage tank, unused equipment (piping) stored on location.



Weeds/debris, inadequate secondary containment, faded illegible signage, torn wildlife protection equipment.



Cattle carcass, weeds, fallen signage.



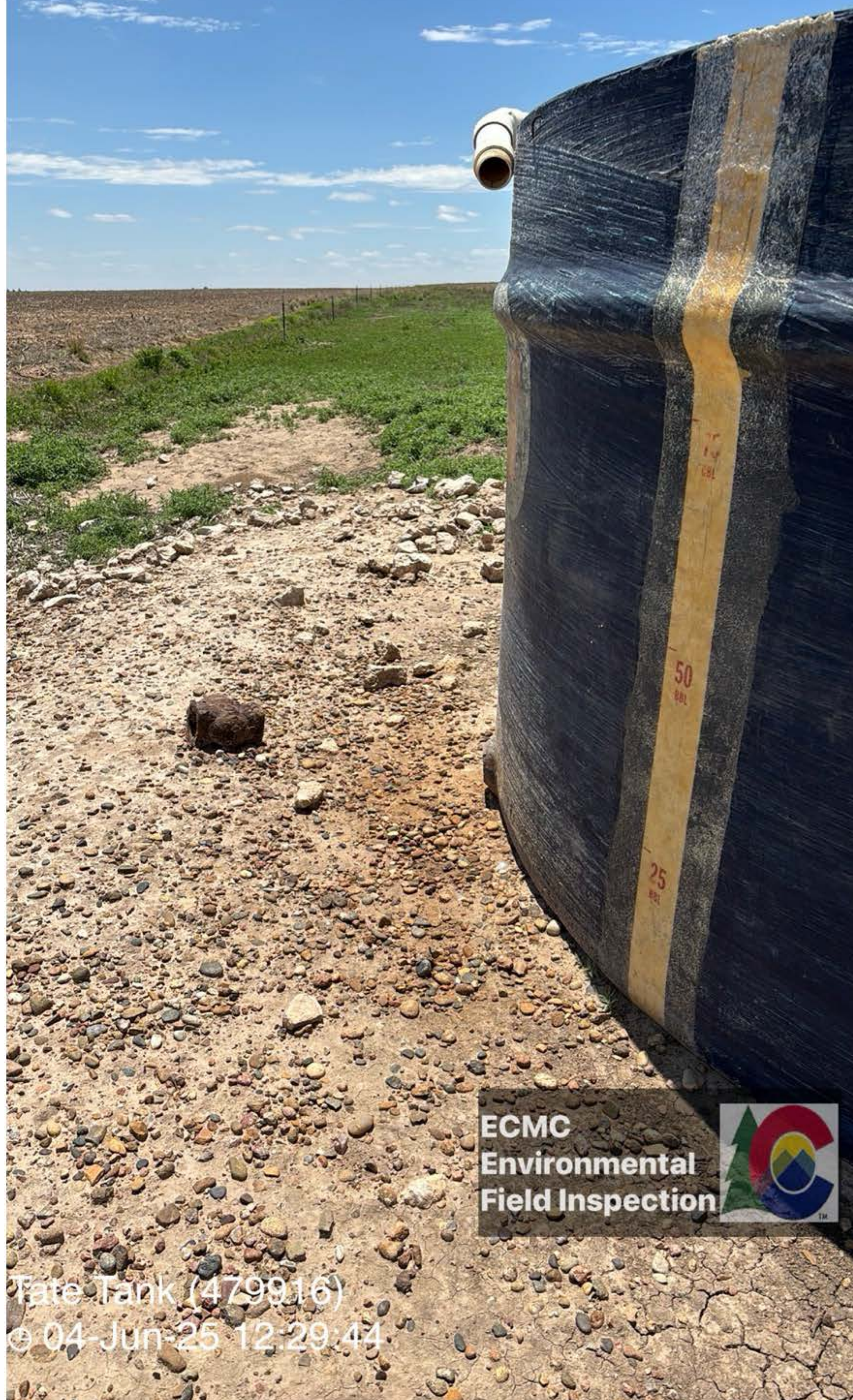
Signage faded and illegible from a distance, stained soil.



Liquid in base of the ~100-bbl open top fiberglass produced water storage tank.

WGS84 37.37160,
±8ft -102.24071

M^m_{±3m} 1188 °,T E104
±10



ECMC
Environmental
Field Inspection



Tate Tank (479916)
© 04-Jun-25 12:29:44

Stained soil adjacent to open outlet/drain port, unused equipment, weeds/debris.

WGS84 37.37160,
±8ft -102.24071

Λ^m_{±3m} 1188 °,T
±10 NE73



ECMC
Environmental
Field Inspection



Tate Tank (479916)
© 04-Jun-25 12:29:47

Stained soil adjacent to/down-gradient from open outlet/drain port, unused equipment (fitting), trash/debris - torn wildlife protection equipment (netting) blown off-location.



Stained soil adjacent to/down-gradient from open outlet/drain port, east side of ~100-bbl open top fiberglass produced water storage tank



WGS84 37.37160,
±10ft-102.24070

$\Delta^m_{\pm 3m}$ 1187 $^{\circ}T_{\pm 10}$ SW253



ECMC
Environmental
Field Inspection



Tate Tank (479916)
© 04-Jun-25 12:30:19

Cattle carcass, trash/debris - torn wildlife protection equipment (netting), weeds, fallen signage.

WGS84 37.37167, -102.24066 1187 °T NW316



**ECMC
Environmental
Field Inspection**



Tate Tank (479916)
04-Jun-25 12:31:42
ECMC Environmental Inspection

Cattle carcass adjacent to separator and piping, trash/ debris - torn wildlife protection equipment (netting), weeds, fallen signage.