

WGS84 37.36247,
±7ft -102.23858

1187°T E78

DOVER ATWOOD CORP/ENVEX BACA, LLC
20165 N. 67th Ave. • Glendale, AZ 85308

Well		Nº.	
Permit Nº.		SEC. OR LT.	
Twp.		County	

IN CASE OF
EMERGENCY CALL (888)858-7886

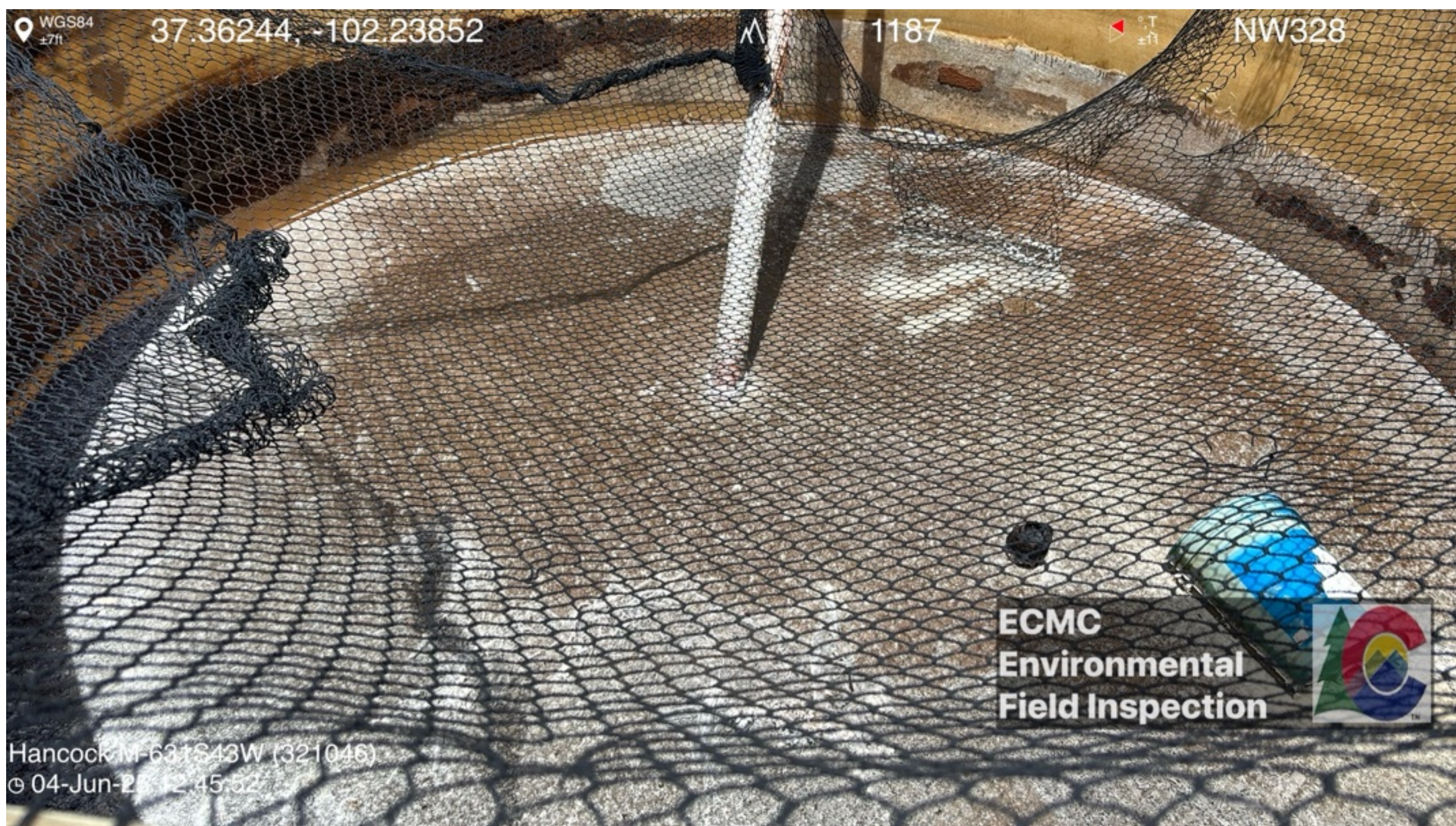
ECMC
Environmental
Field Inspection



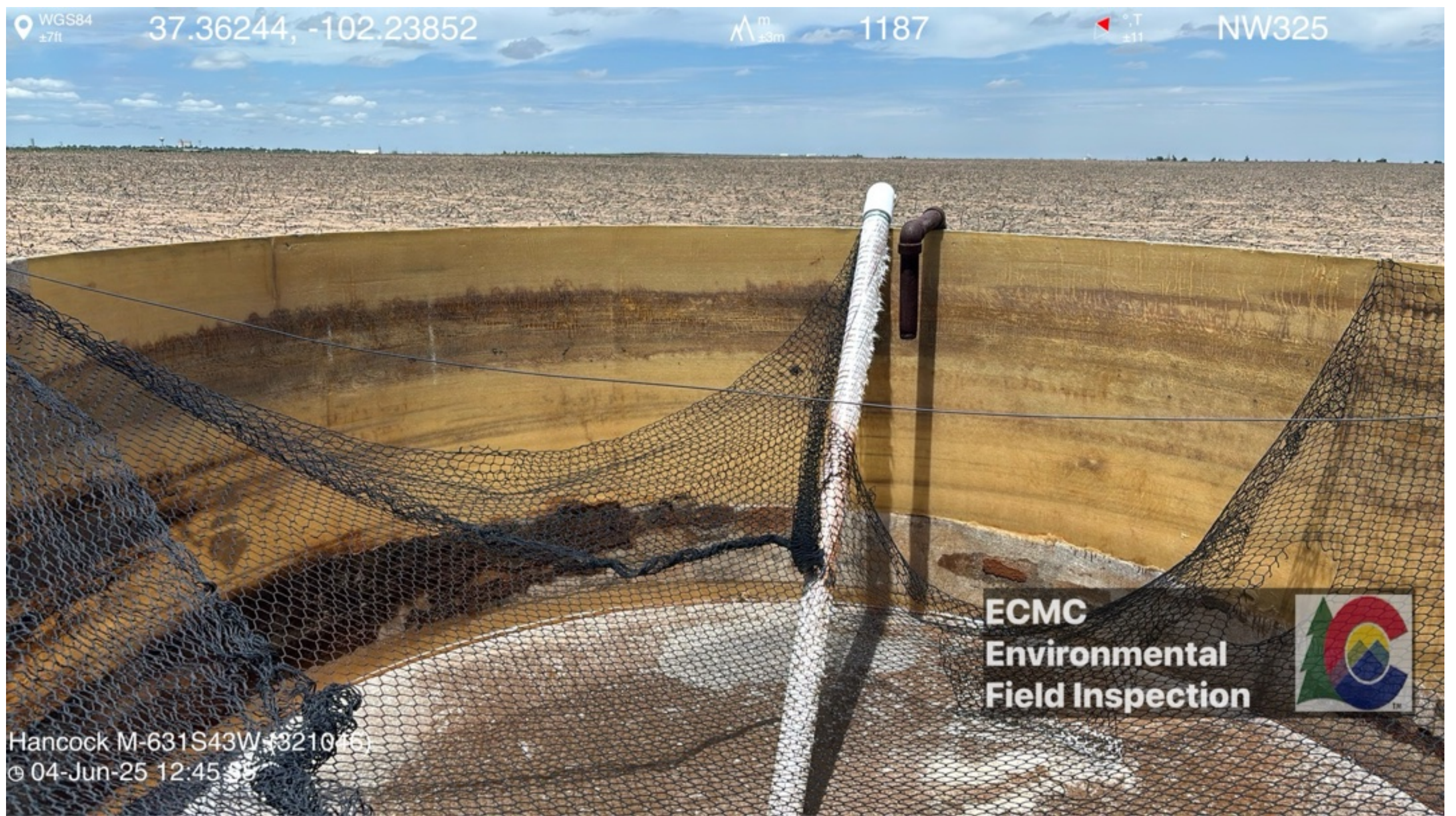
Hancock M-631S43W (321046)
© 04-Jun-25 12:45:02



~100-bbl open top fiberglass produced water storage tank missing contents/volume labels and hazard/NFPA placards. Inadequate secondary containment.



~100-bbl open top fiberglass produced water storage tank has trash/debris in base and wildlife protection equipment (netting) has fallen and requires maintenance/repair.



~100-bbl open top fiberglass produced water storage tank wildlife protection equipment (netting) has fallen and requires maintenance

WGS84 37.36246,
±7ft -102.23856

1187

E98



ECMC
Environmental
Field Inspection



Hancock M-631S43W (321046)
© 04-Jun-25 12:46:15

WGS84 37.36249,
±7ft -102.23854

1187 m
±3m

°T
±11 SE147



Stained soil observed beneath the bung installed on outlet/drain port on the ~100-bbl open top fiberglass produced water storage tank.

WGS84 37.36250,
±7ft -102.23849

$\Delta^m_{\pm 3m}$ 1187 $^{\circ},T_{\pm 11}$ SE146



Hancock M-631S43W (321046)
© 04-Jun-25 12:46:51

Weeds/debris observed next to welhead and cathodic rectifier.



Buried piping is exposed.



Weeds/debris observed next to wellhead and cathodic rectifier.



Weeds/debris observed next to welhead and cathodic rectifier.



Weeds/debris observed next to welhead and cathodic rectifier.



Weeds/debris/unused equipment observed next to welhead and cathodic rectifier.



~100-bbl open top fiberglass produced water storage tank missing contents/volume labels and hazard/NFPA placards.
Inadequate secondary containment.
Weeds/debris
Wildlife protection equipment (netting) has fallen and requires maintenance/repair.



Meter shed is leaning and needs to be fixed.