







Trash (cans) and E&P waste (pieces of flowline) were visible on location.





ECMC  
Environmental  
Field Inspection

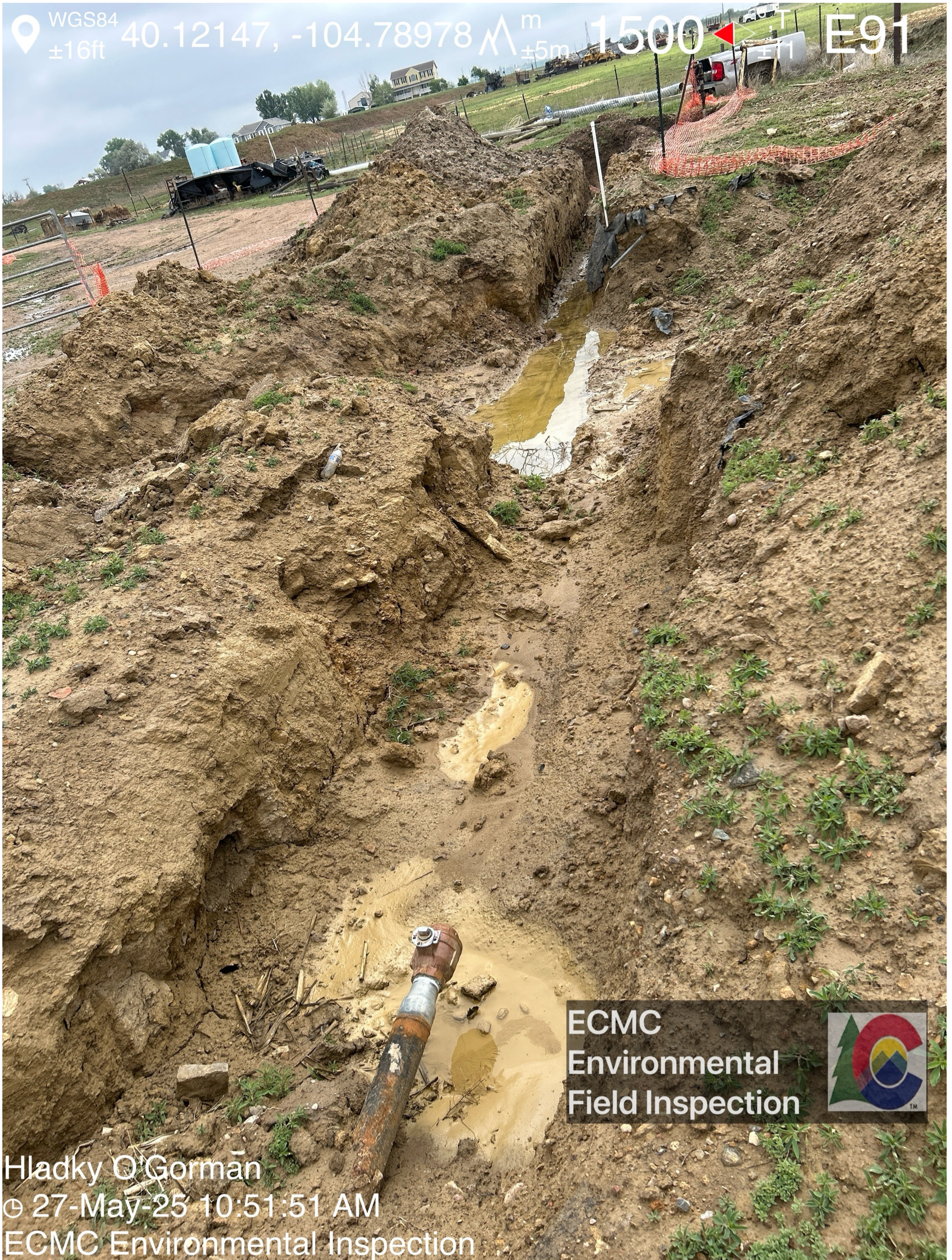


Hladky O'Gorman  
© 27-May-25 10:49:39 AM  
ECMC Environmental Inspection

Multiple trenches are visible within the excavation/spill area. Segments of pipes/lines were visible within the trenches/excavations.



WGS84 40.12147, -104.78978  $\Delta$  m 1500  $\pm$ 16ft  $\pm$ 5m  $\pm$ 11 E91



ECMC  
Environmental  
Field Inspection



Hladky O'Gorman  
© 27-May-25 10:51:51 AM  
ECMC Environmental Inspection

Segments of flowline were exposed within open excavations. Water was visible in multiple areas at the base of the excavations. Pieces of liner are visible. A monitoring well completed as a PVC stickup is visible adjacent to the excavation.



WGS84 40.12136, -104.78972  $\Delta$   $\pm 13\text{ft}$   $\pm 3\text{m}$  1501  $\triangle$   $\pm 11$  °,T SE122



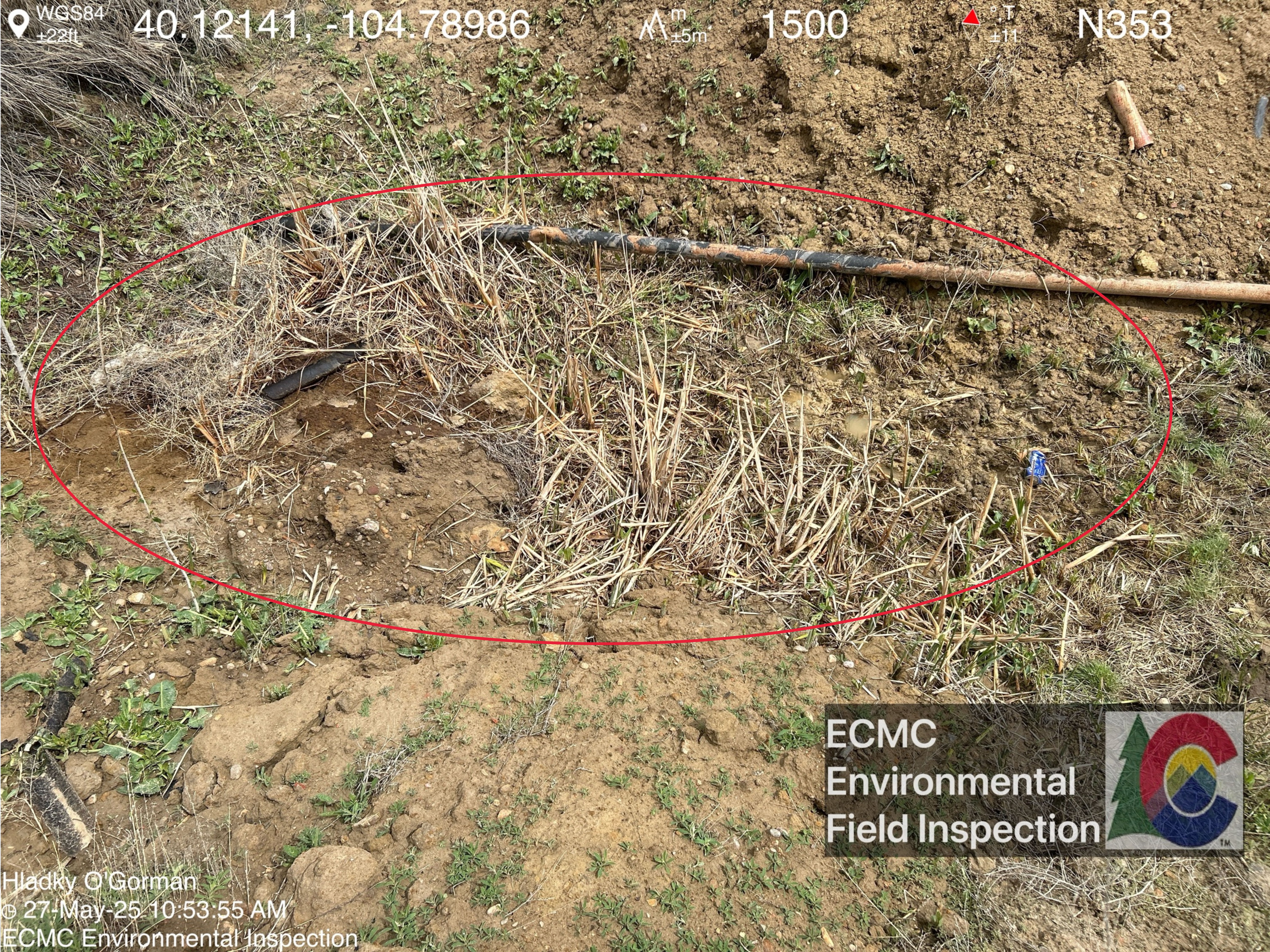
ECMC  
Environmental  
Field Inspection



Hladky O'Gorman  
© 27-May-25 10:52:18 AM  
ECMC Environmental Inspection

Weeds have grown within the excavations.





Petroleum hydrocarbon staining is visible within the excavation.



WGS84 40.12130, -104.78988 1500 N359  
±11ft ±3m ±11



ECMC  
Environmental  
Field Inspection



Hladky O'Gorman  
© 27-May-25 10:54:33 AM  
ECMC Environmental Inspection

Livestock tracks were visible adjacent to the open excavations.



WGS84 40.12143, -104.78961  $\Delta^m_{\pm 3m}$  1500  $\triangle^{\circ,T}_{\pm 11}$  NW312



ECMC  
Environmental  
Field Inspection



Hladky O'Gorman  
© 27-May-25 10:55:28 AM  
ECMC Environmental Inspection



WGS84 40.12151, -104.78950  $\Delta$   $\pm 9\text{ft}$   $\pm 3\text{m}$  1501  $\pm 11$  SW216



ECMC  
Environmental  
Field Inspection



Hladky O'Gorman  
© 27-May-25 10:57:38 AM  
ECMC Environmental Inspection



WGS84 40.12149, -104.78949  $\Delta_{\pm 3m}^m$  1501  $\angle_{\pm 11}^{\circ, T}$  W273  
±10ft



ECMC  
Environmental  
Field Inspection



Hladky O'Gorman  
© 27-May-25 10:57:46 AM  
ECMC Environmental Inspection