

FREMONT ENVIRONMENTAL INC.

June 3, 2025

Mr. Jason Davidson
PDC Energy Inc.
4000 Burlington Ave.
Evans, CO 80620

Subject: **Remediation System Report**
Pierce Central Station
SESE Sec 22, T8N, R66W
Weld County, Colorado
Fremont Project No. C020-025
Remediation #15435

Dear Mr. Davidson:

Enclosed please find a copy of the above referenced Remediation System Report for the Pierce Central Station release site in Weld County, Colorado. The enclosed report describes the operation of the soil vapor extraction system that was installed at the site to remediate petroleum-impacted soil at the site.

Please contact me at (303) 956-8714 if you require any additional information.

Fremont appreciates the opportunity to provide this service.

Sincerely,
FREMONT ENVIRONMENTAL INC.

A handwritten signature in blue ink, appearing to read "Paul V. Henahan", with a stylized flourish at the end.

Paul V. Henahan, P.E.
Senior Consultant

Enclosure

REMEDIATION SYSTEM REPORT

PDC ENERGY INC.

PIERCE CENTRAL STATION

WELD COUNTY, COLORADO

FREMONT PROJECT NO. C020-025

REMEDIATION #15435

Prepared by:

**Fremont Environmental Inc.
1759 Redwing Lane
Broomfield, CO 80020
(303) 956-8714**

June 3, 2025

TABLE OF CONTENTS

1.0 INTRODUCTION	1
2.0 BACKGROUND INFORMATION	1
2.1 Site Location	1
2.2 Site History	1
3.0 REMEDIATION SYSTEM	2
5.0 REMARKS.....	4

Tables

Table 1:	Summary of SVE Discharge
Table 2:	Summary of Volatile Petroleum Hydrocarbons in Soil Chemistry
Table 3 :	Summary of Polycyclic Aromatic Hydrocarbons in Soil Chemistry

Figures

Figure 1:	Site Location Map
Figure 2:	Site Map
Figure 3 :	Soil Chemistry Map, 2022 Volatiles
Figure 4 :	Soil Chemistry Map, 2023 and 2024 Volatiles
Figure 5 :	Soil Chemistry Map, 2023 and 2024 PAHs
Figure 6:	As-Built Figure of Soil Vapor Extraction System with Soil Chemistry

REMEDIATION SYSTEM REPORT

PDC ENERGY INC.

PIERCE CENTRAL STATION

WELD COUNTY, COLORADO

FREMONT PROJECT NO. C020-025

REMEDIATION #15435

1.0 INTRODUCTION

The purpose of this document is to present information describing the operation of a soil vapor extraction (SVE) system at the PDC Energy Inc. (PDC) Pierce Central Station in Weld County, Colorado. The SVE system was installed to remediate contaminated soil that was left in place following an excavation that was conducted in August 2020. The SVE system was activated on December 7, 2020; however, the system was deactivated on January 12, 2021 due to the potential for exceeding the State of Colorado's emissions standards. Since that time, off gas control using a catalytic oxidizer has been installed allowing the SVE system to be reactivated.

2.0 BACKGROUND INFORMATION

2.1 Site Location

The Pierce Station site is located approximately one mile north of Pierce, Colorado in Weld County as shown on Figure 1. The site is located in an agricultural area approximately 0.1 miles west of the intersection of Highway 85 and County Road 90. The location is further described as the SE $\frac{1}{4}$ of the SE $\frac{1}{4}$ of Section 22, Township 8N, Range 66W.

2.2 Site History

Soil impacts were identified within the bermed area following a February 2020 release at the facility. In August 2020, approximately 1,230 cubic yards of impacted soil were removed from varying depths at the facility. However, residual soil contamination was

left in place; this soil was to be remediated with an SVE system. PDC has taken this facility completely out of service and removed all the equipment from the site.

3.0 REMEDIATION SYSTEM

As a result of residual soil impacts at the former Pierce Station, PDC installed an SVE system at the facility. Fifteen SVE wells were installed at the site in September and October 2020. Eleven of these wells were completed as “deep” wells with the SVE screen placed at an interval of 15 to 25 feet below grade. Four of these wells were completed as “shallow” wells with the SVE screen placed at an interval of 6 to 16 feet.

Each of the 15 wells is individually piped to a remediation system building using 2-inch diameter PVC pipe. Water drip legs are provided on each line to accommodate condensation in the piping. The SVE legs are tied into a manifold within the building that is piped to a 15 HP Rotron DR909 vacuum blower. This blower operates at 300 to 400 cubic feet per minute (cfm). A system as-built drawing is provided on Figure 6.

The SVE system was activated on December 7, 2020. Offgas vapor samples were collected on a weekly basis and submitted to Origins Laboratory, Inc. of Denver, Colorado for the analyses of benzene, toluene, ethylbenzene and xylenes (BTEX) and total petroleum hydrocarbons – gasoline range organics (TPH-GRO) by EPA method TO-15.

After four weeks of operation, it was determined that the offgas mass may ultimately exceed the Colorado Department of Public Health and Environment’s (CDPHE’s) unpermitted, allowable emissions threshold of two tons per year (TPY). During the four week operation period, the SVE system removed approximately 0.91 tons of TPH-GRO. Therefore, the SVE system was deactivated on January 12, 2021 pending evaluation of offgas vapor treatment options.

PDC was issued a Construction Permit by the CDPHE Air Pollution Control Division on April 21, 2021. This permit allows an annual emissions limit of 0.7 tons of volatile organic compounds (VOCs) while utilizing offgas control. The SVE system was retrofitted with a catalytic oxidizer which was activated on April 26, 2021 and operates continuously. The catalytic oxidizer has a design destruction efficiency of 99.5%; however, the CDPHE air permit only allows a maximum of 95% destruction efficiency for emission calculation purposes. The permit also requires that, at a minimum, the system be sampled once per week for the first month, once a month for the next two months and then once every three months thereafter. This sampling was conducted and is summarized in Table 1.

Through March 2025, the SVE system has removed a total of 5.21 tons of petroleum hydrocarbons from the subsurface as indicated on Table 1; this includes 0.91 tons removed prior to the installation of the catalytic oxidizer unit. Since the catalytic oxidizer has been installed, 0.22 tons have been emitted to atmosphere.

The emission sample collected from the SVE exhaust on March 7, 2025 indicated that lower concentrations of petroleum constituents were still present in the SVE offgas. The SVE system continues to draw atmospheric air into the subsurface which provides oxygen for aerobic microbes. These microbes continue to biodegrade heavier-end hydrocarbons.

As indicated by field observations and laboratory data, the SVE system has been effective in removing the lighter petroleum hydrocarbon constituents from the subsurface. To better define this effectiveness, PDC advanced five soil borings on July 23, 2024. These soil borings were in close proximity to the soil borings that were advanced in August 2023 and August 2022 and had previously exceeded the ECMC Table 915-1 standards.

One to three soil samples from each boring were submitted for laboratory analyses of BTEX, naphthalene, TMBs, TPH-GRO, TPH-DRO, TPH-ORO, and polycyclic aromatic hydrocarbons (PAHs). As shown in Tables 2 and 3 and illustrated on Figures 4 and 5, lighter petroleum constituents (TPH-GRO) have been adequately remediated across the site. However, elevated concentrations of heavier range petroleum constituents (TPH-DRO and TPH-ORO) remain above the Table 915-1 limit. Further, PAH concentrations meet the ECMC Table 915-1 standards in all samples.

Based on the July 2024 soil boring data, the SVE was adjusted to target the remaining soil impacts. SVE flows have been focused on the western and southeastern portion of the facility. Further, drawing fresh atmospheric air into areas of heavier-end petroleum concentrations will promote insitu aerobic biodegradation. In addition, the soil samples from borings SB-2, SB-3 and SB-8 have achieved the Table 915-1 standards; therefore, SVE air flows from these areas was reduced. Figure 6 shows the locations of the remediation wells with respect to the soil borings.

5.0 REMARKS

The discussion and conclusions contained in this report represent our professional opinions. These opinions are based on currently available information and are arrived at in accordance with currently accepted hydrogeologic and engineering practices at this time and location. Other than this, no warranty is implied or intended.

This report was prepared by **FREMONT ENVIRONMENTAL INC.**



6/3/25

Date_____

Paul V. Henehan, P.E.

Senior Consultant

TABLES

TABLE 1
SUMMARY OF SVE DISCHARGE
PDC ENERGY INC.
PIERCE STATION, WELD COUNTY, COLORADO
FREMONT PROJECT NO. C020-025

Date	Air Discharge (CFM)	Hydrocarbon Removal Rate (Lbs/Hr)	Avg Lbs/Hr	(Lbs/Day)	Operational Hours	Total Pounds Removed For Period	Cumulative Pounds Removed	Cumulative Tons Removed	Cumulative Tons emitted to Atmosphere	Benzene Lbs/Hr	Total Benzene For Period Lbs	Cumulative Pounds Benzene Removed
12/14/20	310	2.85	2.85	68.42	168	478.80	478.80	0.24	0.24	0.0002	0.04	0.04
12/22/20	310	2.50	2.68	60.08	192	513.98	992.78	0.50	0.48	0.0001	0.03	0.07
12/28/20	310	2.76	2.63	66.19	144	378.81	1,371.58	0.69	0.68	0.0001	0.01	0.08
01/04/21	280	2.68	2.72	64.31	168	456.76	1,828.34	0.91	0.90	0.0001	0.01	0.09
Catalytic Oxidizer Installed, Restarted 4/26/21												
04/26/21	280	1.27	1.27	30.40	168	213.36	0.00	0.00	0.00	0.0000	0.00	0.09
05/04/21	290	1.26	1.26	30.18	192	242.31	242.31	0.12	0.01	0.0001	0.01	0.11
05/12/21	290	0.99	1.12	23.78	192	215.85	458.16	0.23	0.01	0.0001	0.01	0.12
05/20/21	290	1.21	1.10	29.14	192	211.68	669.84	0.33	0.02	0.0001	0.01	0.14
06/02/21	290	0.73	0.97	17.56	312	303.57	973.41	0.49	0.02	0.0001	0.02	0.16
06/09/21	290	0.63	0.68	15.12	168	114.38	1,087.78	0.54	0.03	0.0001	0.01	0.17
06/25/21	290	0.53	0.58	12.75	302	175.32	1,263.10	0.63	0.03	0.0001	0.02	0.19
08/05/21	290	2.46	1.50	59.06	984	1,472.11	2,735.21	1.37	0.07	0.0001	0.07	0.27
11/01/21	Off	Off	1.50	Off	1,857	2,778.15	5,513.36	2.76	0.14	0.0001	0.14	0.41
02/25/22	400	1.17	1.17	28.17	389	456.61	5,969.97	2.98	0.15	0.0001	0.04	0.45
05/31/22	400	0.01	0.59	0.231	1,958	1,158.58	7,128.56	3.56	0.18	0.0001	0.10	0.55
08/23/22	400	0.10	0.06	2.437	1,771	98.43	7,226.99	3.61	0.18	0.0001	0.19	0.74
11/23/22	400	0.08	0.09	1.816	1,944	172.23	7,399.22	3.70	0.18	0.0001	0.20	0.94
02/01/23	400	0.19	0.13	4.450	1,428	186.41	7,585.63	3.79	0.19	0.0001	0.15	1.09
05/30/23	400	0.02	0.10	0.578	2,592	271.50	7,857.13	3.93	0.20	0.0001	0.27	1.36
08/03/23	400	0.05	0.04	1.274	1,228	47.37	7,904.51	3.95	0.20	0.0001	0.13	1.49
11/09/23	400	0.10	0.08	2.358	2,073	156.85	8,061.35	4.03	0.20	0.0001	0.22	1.71
02/16/24	400	0.07	0.09	1.741	1,978	168.88	8,230.24	4.12	0.21	0.0001	0.21	1.92
05/31/24	400	0.01	0.04	0.179	2,268	90.72	8,320.96	4.16	0.21	0.0001	0.24	2.15
07/03/24	400	0.05	0.03	1.238	1,382	40.81	8,361.77	4.18	0.21	0.0001	0.14	2.30
11/13/24	400	0.09	0.07	2.114	1,872	130.72	8,492.49	4.25	0.21	0.0001	0.20	2.49
03/07/25	400	0.00	0.04	0.006	2,462	108.71	8,601.21	4.30	0.22	0.0000	0.01	2.50

System started on 12/7/20, deactivated on 1/12/21, re-activated on 4/26/21

Power grid failure on 11/1/21, reactivated on 2/7/22.

Assume catox destruction efficiency of 95% (air permit requirement)

TABLE 2
SUMMARY OF VOLATILE ORGANIC SOIL CHEMISTRY DATA
PDC ENERGY, INC.
PIERCE CENTRAL STATION, WELD COUNTY, COLORADO
FREMONT PROJECT NO. C020-025

Sample ID	Sample Date	Depth (ft)	Benzene (mg/kg)	Toluene (mg/kg)	Ethyl-Benzene (mg/kg)	Xylenes (mg/kg)	1,2,4- Trimethyl- Benzene (mg/kg)	1,3,5- Trimethyl- Benzene (mg/kg)	Naphthalene (mg/kg)	TPH GRO (mg/kg)	TPH DRO (mg/kg)	TPH ORO (mg/kg)
ECMC Table 915-1 Limits (Residential SSL)			1.2	490	5.8	58	30	27	2	500**		
ECMC Table 915-1 Limits (Protection of Groundwater SSL)			0.0026	0.69	0.78	9.9	0.0081	0.0087	0.0038	500**		
SB-1 12ft	8/4/2022	12	<0.0020	<0.0050	<0.0050	<0.010	<0.0050	<0.0050	<0.0038	3	990	220
SB-1 19ft	8/4/2022	19	<0.0020	<0.0050	<0.0050	<0.010	<0.0050	<0.0050	<0.0038	280	1500	320
SB-1 23ft	8/4/2022	23	<0.0020	<0.0050	0.023	<0.010	0.11	<0.0050	0.1	47	930	150
SB-2 12ft	8/4/2022	12	<0.0020	<0.0050	<0.0050	<0.010	<0.0050	<0.0050	<0.0038	<0.5	<50	<50
SB-2 24ft	8/4/2022	24	<0.0020	<0.0050	<0.0050	<0.010	<0.0050	<0.0050	<0.0038	<0.5	<50	<50
SB-3 12ft	8/4/2022	12	<0.0020	<0.0050	<0.0050	<0.010	<0.0050	<0.0050	<0.0038	<0.5	<50	<50
SB-3 19ft	8/4/2022	19	<0.0020	<0.0050	<0.0050	<0.010	<0.0050	<0.0050	<0.0038	<0.5	<50	<50
SB-4 13ft	8/4/2022	13	<0.0020	<0.0050	<0.0050	<0.010	<0.0050	<0.0050	<0.0038	2.3	5100	989
SB-4 5ft	8/4/2022	5	<0.0020	<0.0050	<0.0050	<0.010	<0.0050	0.039	<0.0038	9.9	2200	440
SB-5 18ft	8/4/2022	18	<0.0020	<0.0050	<0.0050	<0.010	<0.0050	<0.0050	<0.0038	4.6	<50	<50
SB-5 23ft	8/4/2022	23	<0.0020	<0.0050	0.0093	<0.010	<0.0050	<0.0050	<0.0038	560	3900	620
SB-6 14ft	8/4/2022	14	<0.0020	<0.0050	<0.0050	<0.010	<0.0050	<0.0050	0.014	34	1500	280
SB-6 23ft	8/4/2022	23	<0.0020	<0.0050	<0.0050	<0.010	<0.0050	<0.0050	<0.0038	9.4	<50	<50
SB-7 10ft	8/4/2022	10	<0.0020	<0.0050	<0.0050	<0.010	<0.0050	<0.0050	0.036	47	2400	390
SB-7 16ft	8/4/2022	16	<0.0020	<0.0050	<0.0050	<0.010	<0.0050	<0.0050	<0.0038	4	2700	560
SB-8 12ft	8/4/2022	12	<0.0020	<0.0050	<0.0050	<0.010	<0.0050	<0.0050	<0.0038	<0.5	<50	<50
SB-8 24ft	8/4/2022	24	<0.0020	<0.0050	<0.0050	<0.010	<0.0050	<0.0050	<0.0038	<0.5	62	<50
SB-1A 12FT	08/03/2023	12	<0.0020	<0.0050	<0.0050	<0.010	<0.0050	<0.0050	<0.0038	1600	3	530
SB-1A 19FT	08/03/2023	19	<0.0020	<0.0050	<0.0050	<0.010	<0.0050	<0.0050	<0.0038	3400	31	850
SB-1A 23FT	08/03/2023	23	<0.0020	<0.0050	<0.0050	<0.010	<0.0050	<0.0050	<0.0038	<50	<0.50	<50
SB-2A 12FT	08/03/2023	12	<0.0020	<0.0050	<0.0050	<0.010	<0.0050	<0.0050	<0.0038	<50	<0.50	<50
SB-2A 23FT	08/03/2023	23	<0.0020	<0.0050	<0.0050	<0.010	<0.0050	<0.0050	<0.0038	<50	<0.50	<50
SB-3A 17FT	08/03/2023	17	<0.0020	<0.0050	<0.0050	<0.010	<0.0050	<0.0050	<0.0038	<50	<0.50	<50
SB-3A 21FT	08/03/2023	21	<0.0020	<0.0050	<0.0050	<0.010	<0.0050	<0.0050	<0.0038	<50	<0.50	<50
SB-4A 13FT	08/03/2023	13	<0.0020	<0.0050	<0.0050	<0.010	<0.0050	<0.0050	<0.0038	2700	9.5	810
SB-4A 7FT	08/03/2023	7	<0.0020	<0.0050	<0.0050	<0.010	<0.0050	<0.0050	<0.0038	420	9.2	<50
SB-5A 16FT	08/03/2023	16	<0.0020	<0.0050	<0.0050	<0.010	<0.0050	<0.0050	<0.0038	730	<0.50	320
SB-5A 23FT	08/03/2023	23	<0.0020	<0.0050	<0.0050	<0.010	<0.0050	<0.0050	<0.0038	3500	51	660
SB-6A 15FT	08/03/2023	15	<0.0020	<0.0050	<0.0050	<0.010	<0.0050	<0.0050	<0.0038	570	<0.50	140
SB-6A 19FT	08/03/2023	19	<0.0020	<0.0050	<0.0050	<0.010	<0.0050	<0.0050	<0.0038	210	7.7	<50
SB-6A 23FT	08/03/2023	23	<0.0020	<0.0050	<0.0050	<0.010	<0.0050	<0.0050	<0.0038	<50	<0.50	<50
SB-7A 16FT	08/03/2023	16	<0.0020	<0.0050	<0.0050	<0.010	<0.0050	<0.0050	<0.0038	290	0.68	81
SB-7A 9FT	08/03/2023	9	<0.0020	<0.0050	<0.0050	<0.010	<0.0050	<0.0050	<0.0038	210	3.7	<50
SB-8A 12FT	08/03/2023	12	<0.0020	<0.0050	<0.0050	<0.010	<0.0050	<0.0050	<0.0038	<50	<0.50	<50
SB-8A 23FT	08/03/2023	23	<0.0020	<0.0050	<0.0050	<0.010	<0.0050	<0.0050	<0.0038	<50	<0.50	<50

Sample ID	Sample Date	Depth (ft)	Benzene (mg/kg)	Toluene (mg/kg)	Ethyl-Benzene (mg/kg)	Xylenes (mg/kg)	1,2,4- Trimethyl- Benzene (mg/kg)	1,3,5- Trimethyl- Benzene (mg/kg)	Naphthalene (mg/kg)	TPH GRO (mg/kg)	TPH DRO (mg/kg)	TPH ORO (mg/kg)
ECMC Table 915-1 Limits (Residential SSL)			1.2	490	5.8	58	30	27	2	500**		
ECMC Table 915-1 Limits (Protection of Groundwater SSL)			0.0026	0.69	0.78	9.9	0.0081	0.0087	0.0038	500**		
SB-1 12FT	7/23/2024	12	<0.0020	<0.0050	<0.0050	<0.010	<0.0050	<0.0050	<0.0038	14	3300	910
SB-1 19FT	7/23/2024	19	<0.0020	<0.0050	<0.0050	<0.010	<0.0050	<0.0050	<0.0038	<0.50	280	<50
SB-1 23FT	7/23/2024	23	<0.0020	<0.0050	<0.0050	<0.010	<0.0050	<0.0050	<0.0038	5.0	4900	1000
SB-4 7FT	7/23/2024	7	<0.0020	<0.0050	<0.0050	<0.010	<0.0050	<0.0050	<0.0038	1.4	<50	<50
SB-4 13FT	7/23/2024	13	<0.0020	<0.0050	<0.0050	<0.010	<0.0050	<0.0050	<0.0038	<0.50	1200	340
SB-5 16FT	7/23/2024	16	<0.0020	<0.0050	<0.0050	<0.010	<0.0050	<0.0050	<0.0038	1.0	1100	390
SB-5 23FT	7/23/2024	23	<0.0020	<0.0050	<0.0050	<0.010	<0.0050	<0.0050	<0.0038	2.2	1000	310
SB-6 15FT	7/23/2024	15	<0.0020	<0.0050	<0.0050	<0.010	<0.0050	<0.0050	<0.0038	<0.50	2100	490
SB-7 9FT	7/23/2024	9	<0.0020	<0.0050	<0.0050	<0.010	<0.0050	<0.0050	<0.0038	1.6	650	310
SB-7 16FT	7/23/2024	16	<0.0020	<0.0050	<0.0050	<0.010	<0.0050	<0.0050	<0.0038	1.6	2000	580

Bold faced values exceed the ECMC Table 915-1 concentrations

Red & blue highlighted 915-1 Limits indicate the referenced soil screening level (SSL)

* Indicates laboratory minimum detection limit in excess of SSL

** Summation of GRO+DRO+ORO must be less than 500 mg/kg

NA - Not analyzed

TABLE 3
SUMMARY OF POLYCYCLIC AROMATIC HYDROCARBON SOIL CHEMISTRY DATA
PDC ENERGY, INC.
PIERCE CENTRAL STATION, WELD COUNTY, COLORADO
FREMONT PROJECT NO. C020-025

Sample ID	Sample Date	Depth (ft)	Acenaphthene (mg/kg)	Anthracene (mg/kg)	Benzo (a) Anthracene (mg/kg)	Benzo (a) Pyrene (mg/kg)	Benzo (b) Fluoranthene (mg/kg)	Benzo (k) Fluoranthene (mg/kg)	Chrysene (mg/kg)	Dibenzo (a,h) Anthracene (mg/kg)	Fluoranthene (mg/kg)	Fluorene (mg/kg)	Indeno (1,2,3- cd) Pyrene (mg/kg)	Pyrene (mg/kg)	1-Methyl - Naphthalene (mg/kg)	2-Methyl- Naphthalene (mg/kg)
ECMC Table 915-1 Limits (Residential SSL)			360	1800	1.1	0.11	1.1	11	110	0.11	240	240	1.1	180	18	24
ECMC Table 915-1 Limits (Protection of Groundwater SSL)			0.55	5.8	0.011	0.24	0.3	2.9	9	0.096	8.9	0.54	0.98	1.3	0.006	0.019
SB-1A 12FT	08/03/2023	12	<0.00500	<0.00500	0.013	0.010	0.010	0.006	0.0379	<0.00500	0.019	<0.00500	<0.00500	0.066	<0.00500	<0.00500
SB-1A 19FT	08/03/2023	19	<0.00500	<0.00500	0.030	0.028	0.033	0.014	0.0747	<0.00500	0.041	<0.00500	0.014	0.147	<0.00500	<0.00500
SB-1A 23FT	08/03/2023	23	<0.00500	<0.00500	0.032	0.015	0.025	0.008	0.0351	<0.00500	0.041	<0.00500	0.006	0.075	<0.00500	<0.00500
SB-2A 12FT	08/03/2023	12	<0.00500	<0.00500	<0.00500	<0.00500	<0.00500	<0.00500	<0.00500	<0.00500	<0.00500	<0.00500	<0.00500	<0.00500	<0.00500	<0.00500
SB-2A 23FT	08/03/2023	23	<0.00500	<0.00500	<0.00500	<0.00500	<0.00500	<0.00500	<0.00500	<0.00500	<0.00500	<0.00500	<0.00500	<0.00500	<0.00500	<0.00500
SB-3A 17FT	08/03/2023	17	<0.00500	<0.00500	<0.00500	<0.00500	<0.00500	<0.00500	<0.00500	<0.00500	<0.00500	<0.00500	<0.00500	<0.00500	<0.00500	<0.00500
SB-3A 21FT	08/03/2023	21	<0.00500	<0.00500	<0.00500	<0.00500	<0.00500	<0.00500	<0.00500	<0.00500	<0.00500	<0.00500	<0.00500	<0.00500	<0.00500	<0.00500
SB-4A 13FT	08/03/2023	13	<0.00500	<0.00500	0.060	<0.00500	0.007	<0.00500	0.0263	<0.00500	<0.00500	<0.00500	<0.00500	0.019	<0.00500	<0.00500
SB-4A 7FT	08/03/2023	7	<0.00500	<0.00500	0.014	<0.00500	<0.00500	<0.00500	0.0116	<0.00500	<0.00500	<0.00500	<0.00500	0.009	<0.00500	0.0766
SB-5A 16FT	08/03/2023	16	<0.00500	<0.00500	<0.00500	<0.00500	<0.00500	<0.00500	<0.00500	<0.00500	<0.00500	<0.00500	<0.00500	<0.00500	<0.00500	<0.00500
SB-5A 23FT	08/03/2023	23	<0.00500	<0.00500	0.093	<0.00500	0.009	<0.00500	0.0522	<0.00500	<0.00500	<0.00500	<0.00500	0.042	<0.00500	<0.00500
SB-6A 15FT	08/03/2023	15	<0.00500	<0.00500	0.018	<0.00500	0.020	0.007	0.0288	<0.00500	0.032	<0.00500	<0.00500	0.093	<0.00500	<0.00500
SB-6A 19FT	08/03/2023	19	<0.00500	<0.00500	<0.00500	<0.00500	<0.00500	<0.00500	<0.00500	<0.00500	<0.00500	<0.00500	<0.00500	<0.00500	<0.00500	<0.00500
SB-6A 23FT	08/03/2023	23	<0.00500	<0.00500	<0.00500	<0.00500	<0.00500	<0.00500	<0.00500	<0.00500	<0.00500	<0.00500	<0.00500	<0.00500	<0.00500	<0.00500
SB-7A 16FT	08/03/2023	16	<0.00500	<0.00500	0.022	<0.00500	0.015	<0.00500	0.0052	<0.00500	<0.00500	<0.00500	<0.00500	0.040	<0.00500	<0.00500
SB-7A 9FT	08/03/2023	9	<0.00500	<0.00500	0.016	<0.00500	0.012	<0.00500	0.0119	<0.00500	<0.00500	<0.00500	<0.00500	0.028	<0.00500	<0.00500
SB-8A 12FT	08/03/2023	12	<0.00500	<0.00500	<0.00500	<0.00500	<0.00500	<0.00500	<0.00500	<0.00500	<0.00500	<0.00500	<0.00500	<0.00500	<0.00500	<0.00500
SB-8A 23FT	08/03/2023	23	<0.00500	<0.00500	<0.00500	<0.00500	<0.00500	<0.00500	<0.00500	<0.00500	<0.00500	<0.00500	<0.00500	<0.00500	<0.00500	<0.00500
SB-1 12FT	7/23/2024	12	0.00742	0.0102	0.00679	<0.00500	0.00723	<0.00500	0.108	<0.00500	<0.00500	<0.00500	<0.00500	0.0176	<0.00500	<0.00500
SB-1 19FT	7/23/2024	19	<0.00500	<0.00500	<0.00500	<0.00500	<0.00500	<0.00500	<0.00500	<0.00500	<0.00500	<0.00500	<0.00500	<0.00500	<0.00500	<0.00500
SB-1 23FT	7/23/2024	23	<0.00500	<0.00500	<0.00500	<0.00500	<0.00500	<0.00500	0.132	<0.00500	<0.00500	0.205	<0.00500	0.154	<0.00500	<0.00500
SB-4 7FT	7/23/2024	7	<0.00500	<0.00500	<0.00500	<0.00500	<0.00500	<0.00500	<0.00500	<0.00500	<0.00500	<0.00500	<0.00500	<0.00500	<0.00500	<0.00500
SB-4 13FT	7/23/2024	13	<0.00500	<0.00500	<0.00500	<0.00500	0.00731	<0.00500	0.0515	<0.00500	<0.00500	<0.00500	<0.00500	0.0312	<0.00500	<0.00500
SB-5 16FT	7/23/2024	16	<0.00500	<0.00500	<0.00500	<0.00500	<0.00500	<0.00500	<0.00500	<0.00500	<0.00500	<0.00500	<0.00500	<0.00500	<0.00500	<0.00500
SB-5 23FT	7/23/2024	23	0.00778	<0.00500	<0.00500	<0.00500	0.00516	<0.00500	<0.00500	<0.00500	<0.00500	<0.00500	<0.00500	0.0197	<0.00500	<0.00500
SB-6 15FT	7/23/2024	15	0.00865	0.00505	<0.00500	0.0132	0.0113	<0.00500	<0.00500	<0.00500	<0.00500	0.0114	<0.00500	0.0318	<0.00500	<0.00500
SB-7 9FT	7/23/2024	9	<0.00500	<0.00500	<0.00500	0.0343	0.0316	0.00742	<0.00500	<0.00500	<0.00500	<0.00500	0.155	0.103	<0.00500	<0.00500
SB-7 16FT	7/23/2024	16	<0.00500	<0.00500	<0.00500	0.0286	0.0252	0.00513	<0.00500	<0.00500	<0.00500	0.00799	0.126	0.185	<0.00500	<0.00500

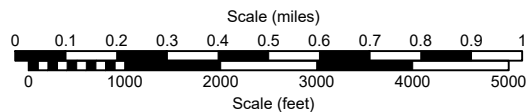
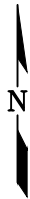
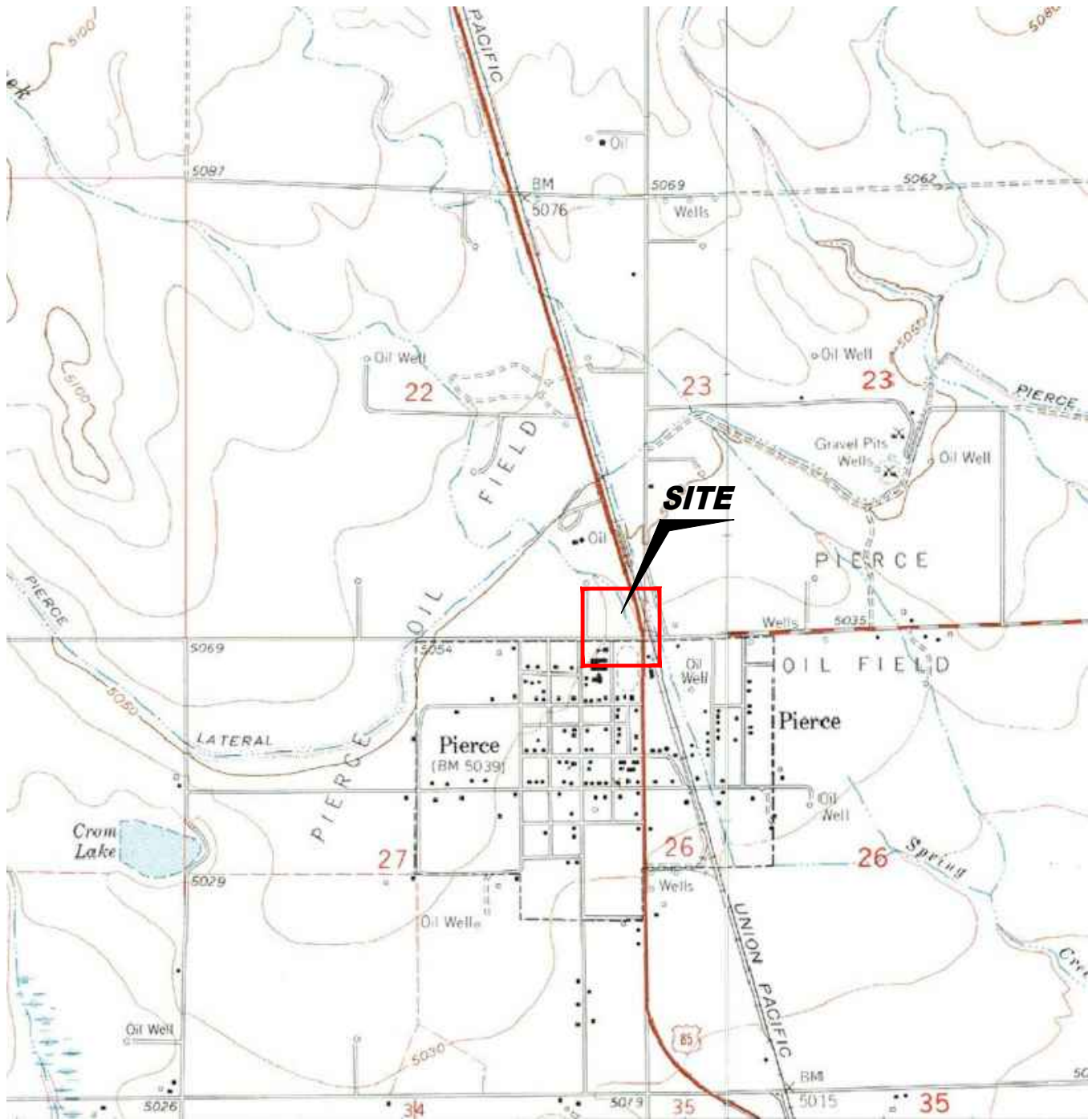
Bold faced values exceed the ECMC Table 915-1 concentrations

Red & blue highlighted 915-1 Limits indicate the referenced soil screening level (SSL)

* Indicates laboratory minimum detection limit in excess of SSL

NA - Not analyzed

FIGURES



USGS 7.5 MINUTE SERIES (TOPOGRAPHIC)

Figure 1
SITE LOCATION MAP

PDC ENERGY ~ PIERCE CENTRAL STATION
SESE Sec 22, T8N, R66W, 6th PM
Weld County, Colorado
40.6438°, -104.7572°

Project No.
CO20-025

Prepared by

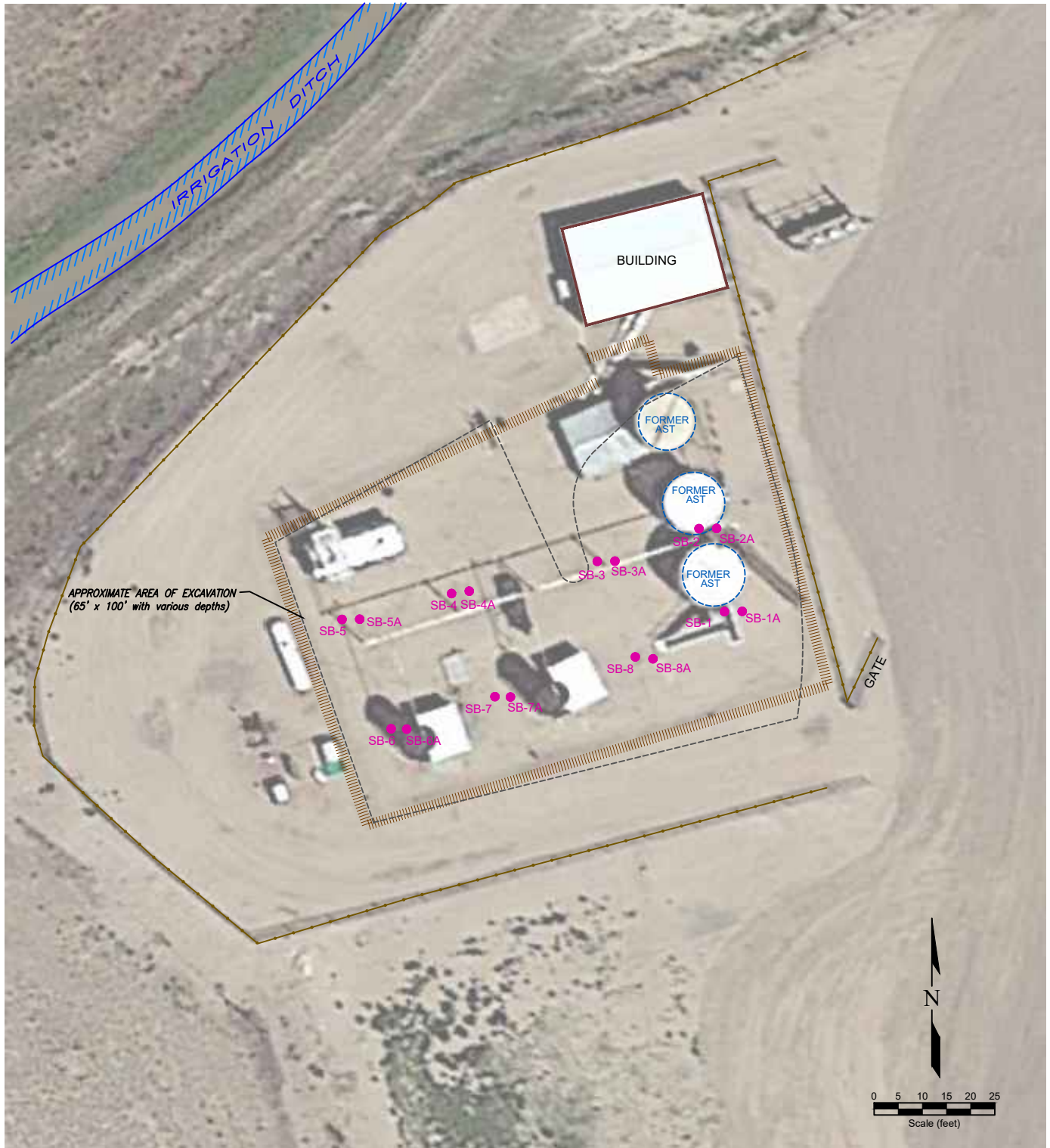
Drawn by
TA

Date
8/14/24

Reviewed by
PH

Filename
20025T






LEGEND

- SOIL BORING
- ABOVE GROUND STORAGE TANK
- FORMER FORMER FACILITY
- BUILDING BUILDING
- ▨ CONTAINMENT BERM
- - - - - EXTENT OF EXCAVATION
- +—+—+— FENCE LINE

Figure 2
SITE MAP

PDC ENERGY ~ PIERCE CENTRAL STATION
 SESE Sec 22, T8N, R66W, 6th PM
 Weld County, Colorado
 40.6438°, -104.7572°

Project No. CO20-025	API #	Facility # TA	
Date 8/14/24	Remediation # PH	Filename 20025Q2	

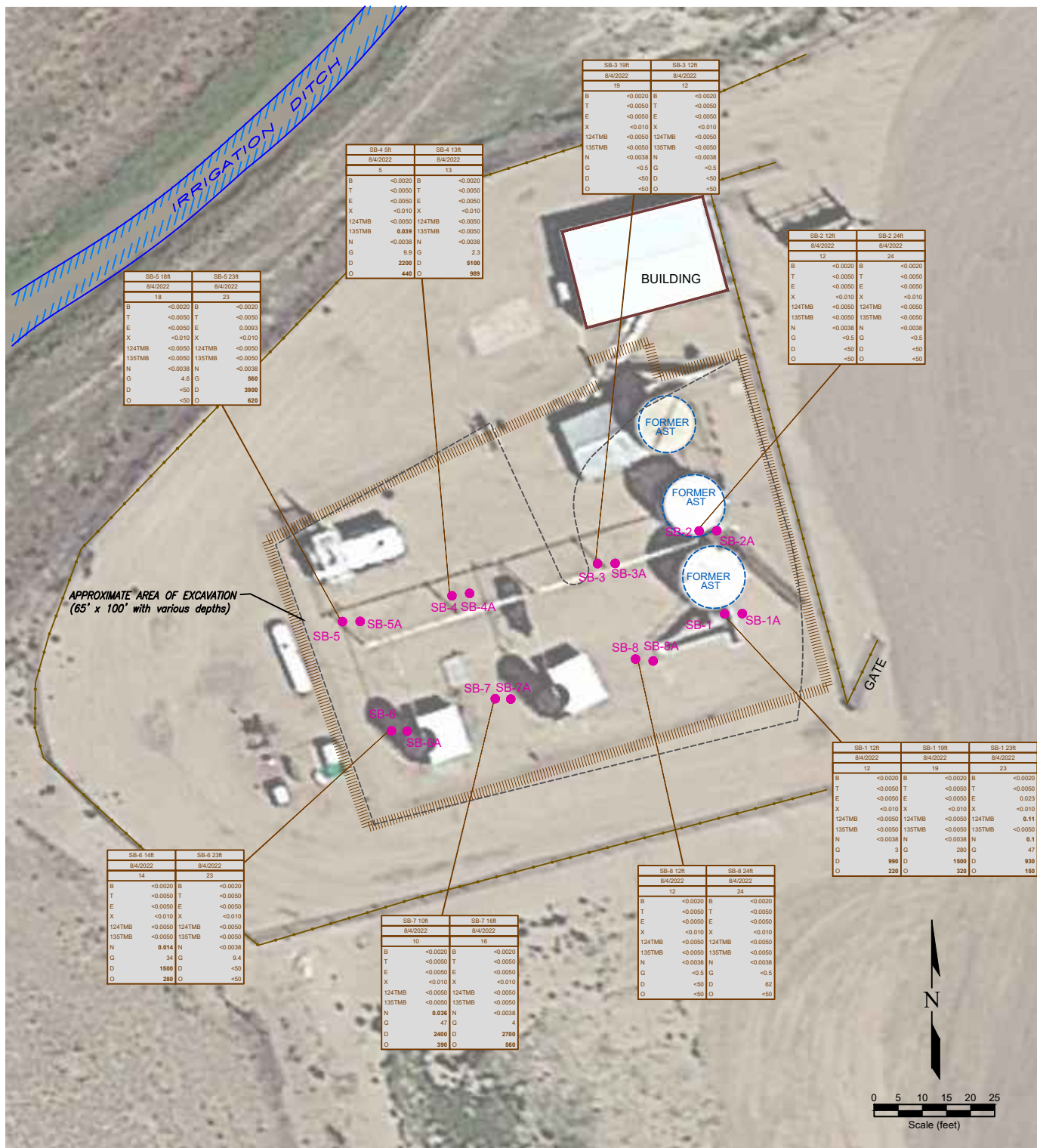


Figure 3
VOLATILE SOIL CHEMISTRY MAP
 August 4, 2022
PDC ENERGY ~ PIERCE CENTRAL STATION
 SESE Sec 22, T8N, R66W, 6th PM
 Weld County, Colorado
 40.6438°, -104.7572°

Project No. CO20-025	API #	Facility # TA	REMONT ENVIRONMENTAL
Date 8/14/24	Remediation # PH	Filename 20025Q2	

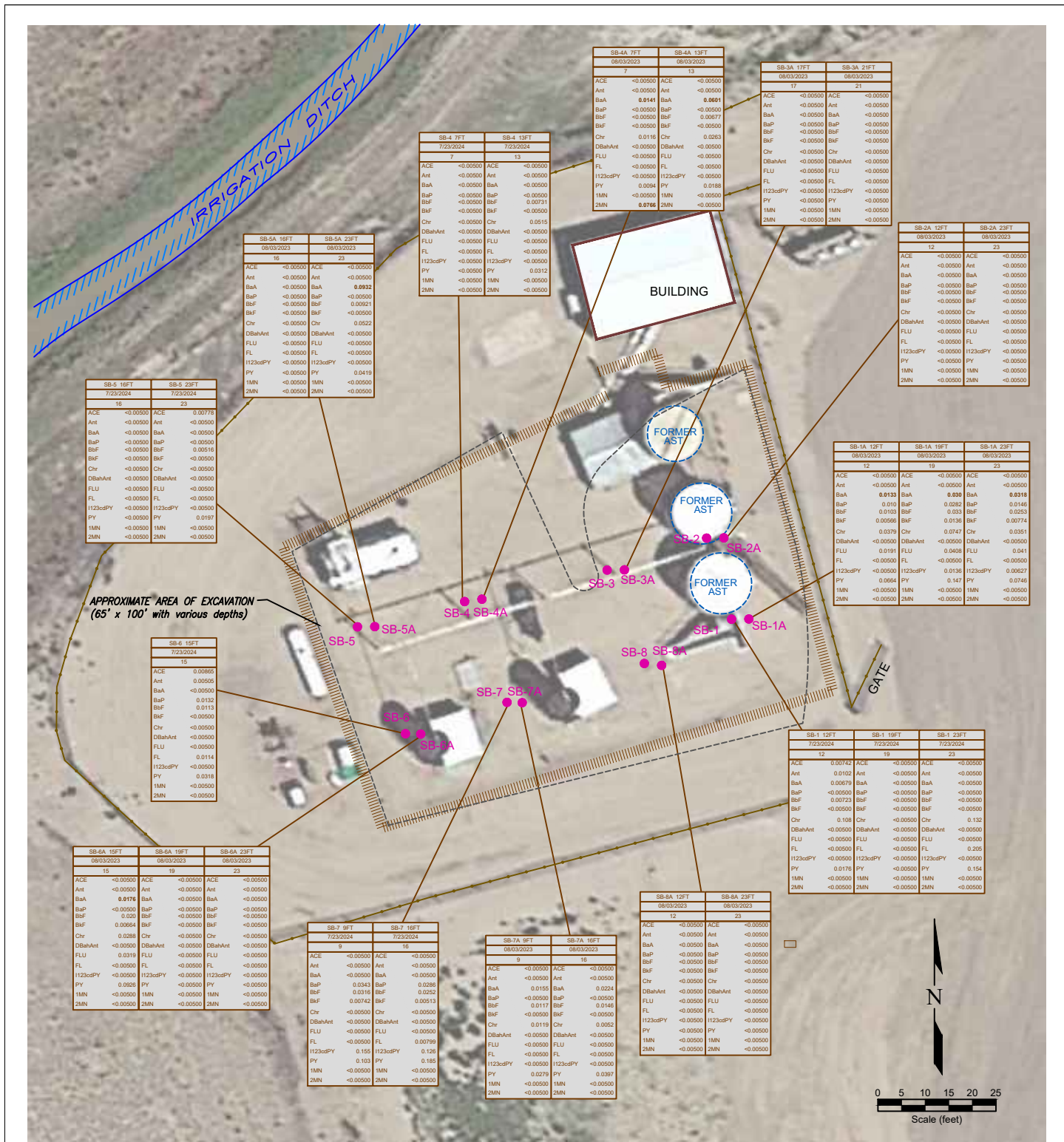


Figure 5
PAH SOIL CHEMISTRY MAP
August 3, 2023 and July 23, 2024
PDC ENERGY ~ PIERCE CENTRAL STATION
 SESE Sec 22, T8N, R66W, 6th PM
 Weld County, Colorado
 40.6438°, -104.7572°

Project No. CO20-025	API #	Facility # TA
Date 8/14/24	Remediation # PH	Filename 20025Q2



SAMPLE ID	DATE	DEPTH (ft)	CONCENTRATION (mg/kg)
ACE	08/03/2023	15	<0.0050
Ant	08/03/2023	15	<0.0050
BaA	08/03/2023	15	<0.0050
BaP	08/03/2023	15	<0.0050
BbF	08/03/2023	15	<0.0050
BkF	08/03/2023	15	<0.0050
Chr	08/03/2023	15	<0.0050
DBahAnt	08/03/2023	15	<0.0050
FLU	08/03/2023	15	<0.0050
FL	08/03/2023	15	<0.0050
I123cdPY	08/03/2023	15	<0.0050
PY	08/03/2023	15	<0.0050
1MN	08/03/2023	15	<0.0050
2MN	08/03/2023	15	<0.0050



LEGEND

● SOIL BORING	○ ABOVE GROUND STORAGE TANK	----- CONTAINMENT BERM
● SOIL VAPOR EXTRACTION WELL	----- EXTENT OF EXCAVATION	----- FENCE LINE
○ DEEP SOIL VAPOR EXTRACTION WELL	----- REMEDIATION SYSTEM TRENCH	

Figure 6


AS-BUILT AS/SVE SYSTEM LAYOUT MAP

PDC ENERGY ~ PIERCE CENTRAL STATION

SESE Sec 22, T8N, R66W, 6th PM

Weld County, Colorado

40.6438°, -104.7572°

Project No. CO20-025	API #	Facility # TA	
Date 8/14/24	Remediation # PH	Filename 20025Q2	