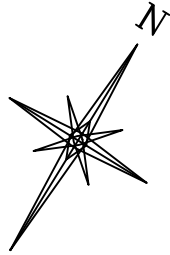
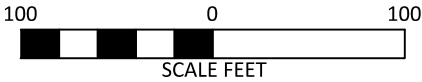


UNGRADED ELEVATION: 7457.7'
FINAL ELEVATION: 7462.8'
AREA OF DISTURBANCE: 8.3± ACRES
AREA OF WORKING PAD SURFACE: 3.7± ACRES
AREA OF ACCESS ROAD: 1.1± ACRES



- WORKING PAD SURFACE (WPS)
- OIL AND GAS LOCATION APPROX. AREA OF DISTURBANCE
- CONSTRUCT V-DITCH AND BERM ALONG EDGE OF WPS
- CONSTRUCT BERM AND DITCH ALONG TOE OF FILL SLOPES
- CONSTRUCT DIVERSION DITCH
- CONSTRUCT SEDIMENT TRAP
- ROCK ARMOR INLET/OUTLET/OUTFALL
- FLEX PIPE W/ ROCK ARMOR INLET/OUTLET
- EXISTING FENCE LINE TO BE RELOCATED WHEN NECESSARY
- PROPOSED ACCESS ROAD
- PROPOSED GATHERING PIPELINE
- TOPSOIL PILE 470'x40'x14' HIGH WITH 2:1 SLOPES WITH STRAW WATTLES
- EXCESS MATERIAL PILE 435'x40'x10' HIGH WITH 2:1 SLOPES WITH STRAW WATTLES

- TANK BATTERY W/ CONTAINMENT (70'x40'):
2 OIL / 4 PROD. WATER / 2 GUNBARREL
- CHEMICAL STORAGE W/ SECONDARY CONTAINMENT
- ENCLOSED COMBUSTION DEVICE (TO BE INSTALLED IF REQUIRED PER APEN)
- KNOCKOUT PUMP
- PRODUCTION EQUIPMENT:
4 - 4 PACK SEPARATORS
EACH 4-PACK SEPARATOR IS EQUIPPED W/ 1 HEAT EXCHANGE W/ BURNER & 1 GAS SCRUBBER
- INSTALL 24" x 50' CULVERT
- REMOTE TELEMETRY UNIT & THERMOELECTRIC GENERATOR
- ELECTRIC GENERATOR

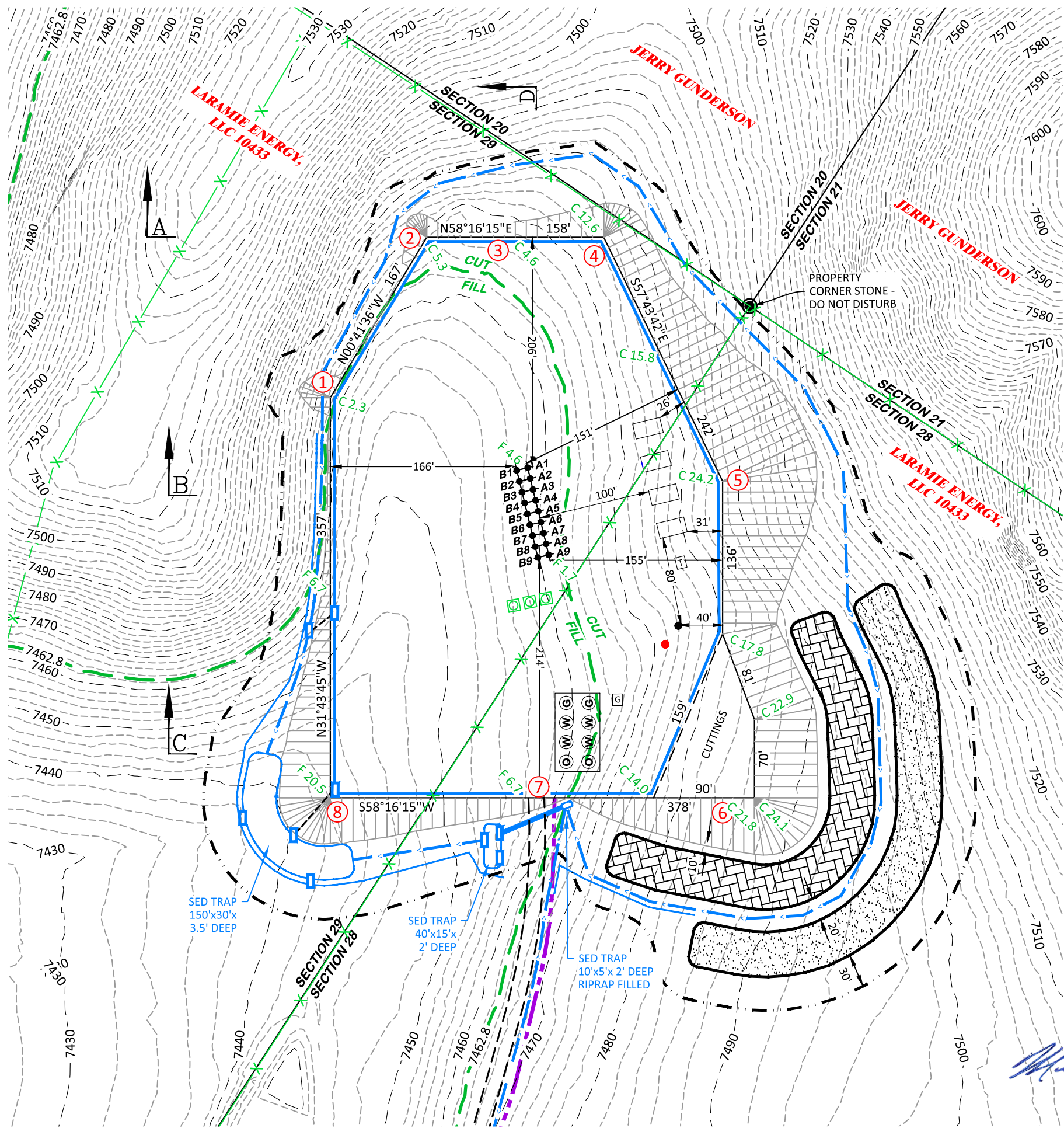
CROSS SECTION VIEW -
SEE PAGE 2 OF 7

ESTIMATED EARTHWORK BANK				
ITEM	TOPSOIL	CUT	FILL	EXCESS
PAD	4,333 BCY	34,354 BCY	34,565 BCY	(-211 BCY)
PIT		NONE		NONE
TOTALS	4,333 BCY	34,354 BCY	34,565 BCY	(-211 BCY)
ESTIMATED EARTHWORK LOOSE (10% SWELL)				
ITEM	TOPSOIL	CUT	FILL	EXCESS
PAD	4,766 BCY	37,790 LCY	34,565 BCY	3,225 LCY
PIT		NONE		NONE
TOTALS	4,766 BCY	37,790 LCY	34,565 BCY	3,225 LCY

BEFORE DIGGING
CALL FOR
UTILITY LINE LOCATION

NOTE: THE EARTH QUANTITIES ON THIS
DRAWING ARE ESTIMATED AND THE
USE OF SAID QUANTITIES IS AT THE
RESPONSIBILITY OF THE USER.

RECOMMENDATION:
EARTHWORK CALCULATIONS REQUIRE A FILL AT
SOME OF THE LOCATION STAKES FOR BALANCE.
ALL FILL IS TO BE COMPACTED TO A MINIMUM OF
95% OF THE MAXIMUM DRY DENSITY OBTAINED
BY AASHTO METHOD T-99.



LARAMIE 0993-29-01

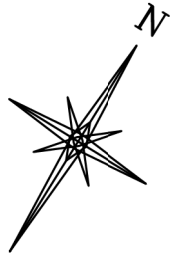
DRG RIFFIN & ASSOCIATES, INC.
1414 ELK ST., ROCK SPRINGS, WY 82901
DRAWN: 6/8/2023 - DEH
REVISED: 5/7/2025 - NGJ

SCALE: 1" = 100'
DRG JOB No. 22334
REVISED SHLs
304b(7)Bi CONST

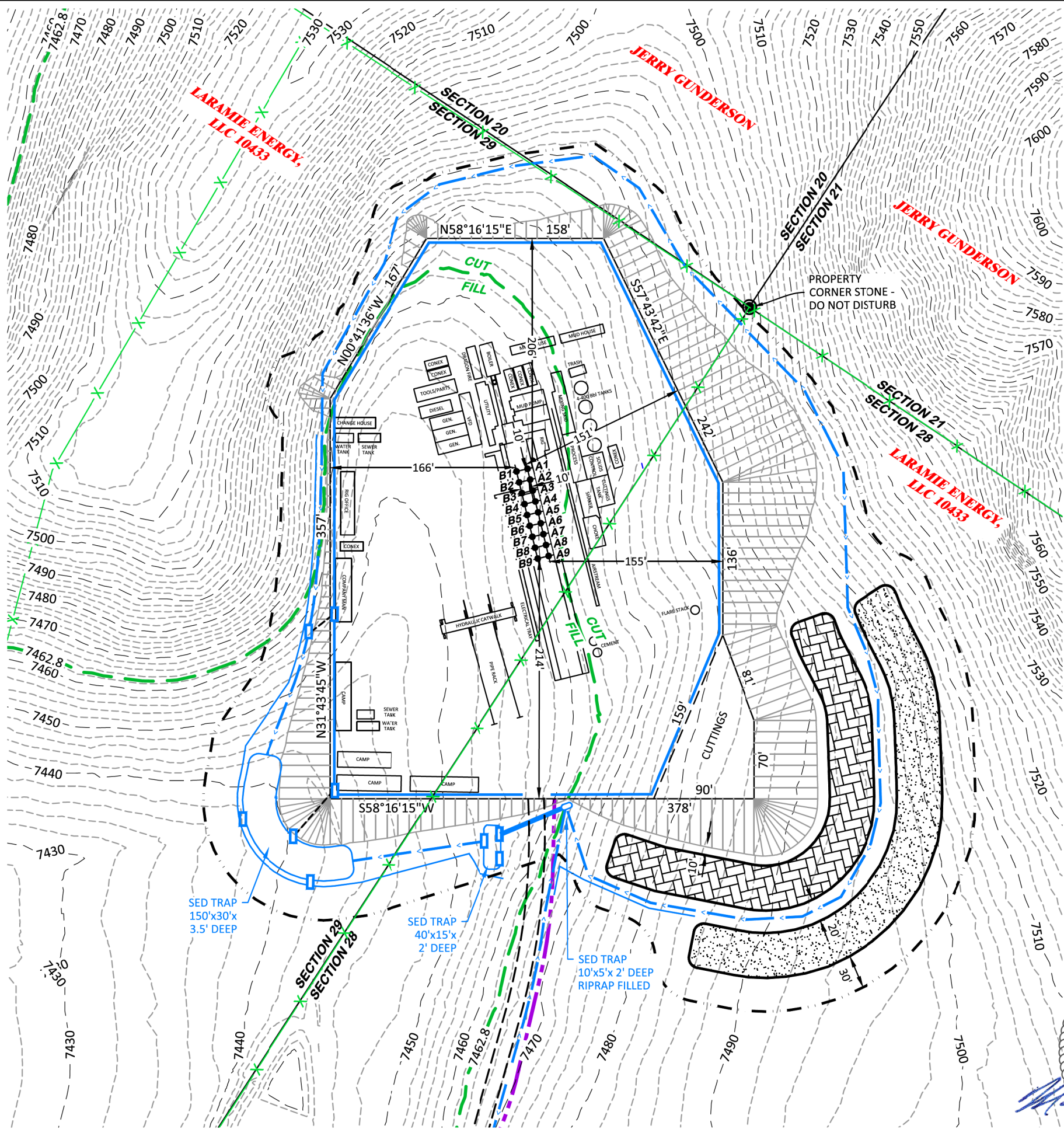
LAYOUT DRAWING 1 OF 7
CONSTRUCTION LAYOUT DRAWING
ESTIMATED EARTHWORK
LARAMIE ENERGY, LLC
LARAMIE 0993-29-01
NENE, SECTION 29, T.9 S., R.93 W., 6th P.M.,
MESA COUNTY, COLORADO



UNGRADED ELEVATION: 7457.7'
FINAL ELEVATION: 7462.8'
AREA OF DISTURBANCE: 8.3± ACRES
AREA OF WORKING PAD SURFACE: 3.7± ACRES
AREA OF ACCESS ROAD: 1.1± ACRES



- WORKING PAD SURFACE (WPS)
- OIL AND GAS LOCATION APPROX. AREA OF DISTURBANCE
- CONSTRUCT V-DITCH AND BERM ALONG EDGE OF WPS
- CONSTRUCT BERM AND DITCH ALONG TOE OF FILL SLOPES
- CONSTRUCT DIVERSION DITCH
- CONSTRUCT SEDIMENT TRAP
- ROCK ARMOR INLET/OUTLET/OUTFALL
- FLEX PIPE W/ ROCK ARMOR INLET/OUTLET
- EXISTING FENCE LINE TO BE RELOCATED WHEN NECESSARY
- PROPOSED ACCESS ROAD
- PROPOSED GATHERING PIPELINE
- TOPSOIL PILE 470'x40'x14' HIGH WITH 2:1 SLOPES WITH STRAW WATTLES
- EXCESS MATERIAL PILE 435'x40'x10' HIGH WITH 2:1 SLOPES WITH STRAW WATTLES
- INSTALL 24" x 50' CULVERT



SCALE: 1" = 100'
DRAWN: 6/8/2023 - DEH
REVISED: 5/7/2025 - NGJ
DRG JOB No. 22394
304b(7)Bil RIG
REVISED SHLs

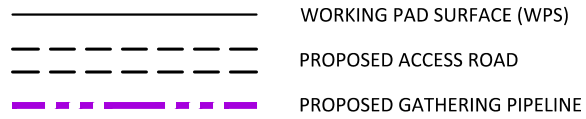
LAYOUT DRAWING 3 OF 7

PRELIMINARY RIG LAYOUT
LARAMIE ENERGY, LLC
LARAMIE 0993-29-01
NENE, SECTION 29, T. 9 S., R. 93 W., 6th P.M.,
MESA COUNTY, COLORADO



BEFORE DIGGING
CALL FOR
UTILITY LINE LOCATION

LARAMIE 0993-29-01



LARAMIE 0993-29-01

DRG
RIFFIN & ASSOCIATES, INC.
1414 ELK ST., ROCK SPRINGS, WY 82901
307.326.0028

LR3 **RIFFIN & ASSOCIATES, INC.**
1414 ELK ST., ROCK SPRINGS, WY 82901
307-252-5028

DRAWN: 6/8/2023 - DEH	SCALE: 1" = 60'
------------------------------	------------------------

DRG JOB No. 22334	USED: 5/7/2025 - NGJ
-------------------	----------------------

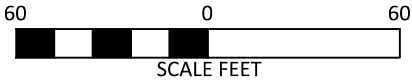
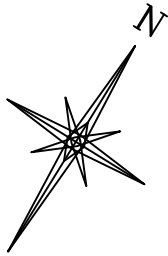
RIG DETAIL

LARAMIE ENERGY, LLC

LARAMIE 0993-29-01

**NENE, SECTION 29, T. 9 S., R. 93 W., 6th P.M.,
MESA COUNTY, COLORADO**

UNGRADED ELEVATION: 7457.7'
FINAL ELEVATION: 7462.8'
AREA OF DISTURBANCE: 8.3± ACRES
AREA OF WORKING PAD SURFACE: 3.7± ACRES
AREA OF ACCESS ROAD: 1.1± ACRES

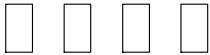


- WORKING PAD SURFACE (WPS)
- PROPOSED ACCESS ROAD
- PROPOSED GATHERING PIPELINE
- PROPOSED SALES LINE TO GATHERING
- PROPOSED PRODUCED WATER LINE
- PROPOSED DUMP LINE TO TANKS
- PROPOSED FLOWLINES TO SEPARATORS



TANK BATTERY W/
CONTAINMENT (70'x40'):
2 OIL / 4 PROD. WATER / 2
GUNBARREL

CHEMICAL STORAGE W/
SECONDARY CONTAINMENT



PRODUCTION EQUIPMENT:
4 - 4 PACK SEPARATORS
EACH 4-PACK SEPARATOR IS
EQUIPPED W/ 1 HEAT EXCHANGE
W/ BURNER & 1 GAS SCRUBBER

ENCLOSED COMBUSTION DEVICE
(TO BE INSTALLED IF REQUIRED
PER APEN)

KNOCKOUT PUMP



INSTALL 24" x 50' CULVERT



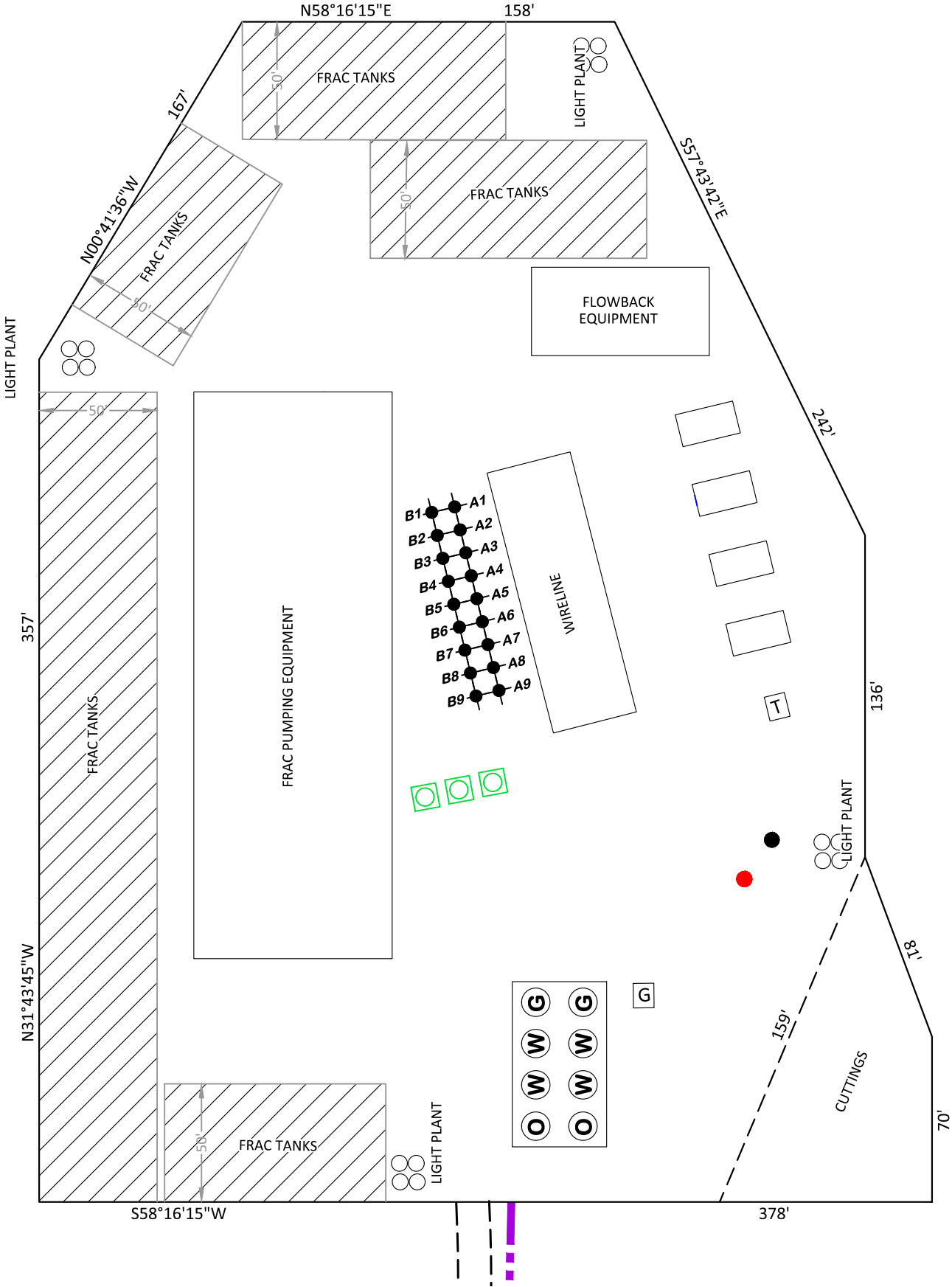
REMOTE TELEMETRY UNIT
& THERMOELECTRIC
GENERATOR



ELECTRIC GENERATOR

NOTES:

1. COMPLETIONS AND FLOWBACK OPERATIONS WILL BE CONDUCTED CONCURRENTLY.
2. COMPLETION OPERATIONS TO BE CONDUCTED CONTINUOUSLY.
3. EXHIBIT DEPICTS PRELIMINARY FRAC AND FLOWBACK EQUIPMENT LAYOUT. EQUIPMENT AND LAYOUT ARE SUBJECT TO CHANGE DEPENDING ON EQUIPMENT AVAILABILITY AND SITE CONDITIONS.
4. EIGHTY (80) FRAC TANKS. CAPACITY PER FRAC TANK: 500 BBLS. TOTAL FRAC TANK CAPACITY (80 FRAC TANKS): 40,000 BBLS.
5. EQUIPMENT LOCATED WITHIN THE "FRAC EQUIPMENT" ENVELOPE: HYDRAULIC STIMULATION CONTROL TRAILER, DIESEL FRAC PUMPS, CHARGE PUMP, AND TEMPORARY CHEMICAL STORAGE
6. EACH LIGHT PLANT IS A SELF-CONTAINED UNIT WITH A GENERATOR AND AUXILIARY POWER SOURCE.
7. ACTUAL WATER LINE AND WATER PUMP PLACEMENT DEPENDENT ON PRE-COMPLETION ALIGNMENT OF FRAC TANKS.
8. OPERATOR WILL UTILIZE HEAT PUMPS FOR WINTER OPERATIONS BASED ON LOCATION SPACING.
9. FLOWBACK SUPPORT TRAILER IS LOCATED WITHIN "FLOWBACK SEPARATORS" ENVELOPE.
10. PLEASE REFER TO THE CONSTRUCTION LAYOUT DRAWING FOR STORMWATER CONTROL MEASURES.



BEFORE DIGGING
CALL FOR
UTILITY LINE LOCATION

LARAMIE 0993-29-01



DRAWN: 8/10/2023 - DEH

REVISED: 5/7/2025 - NGJ

REVISED SHLs

SCALE: 1" = 60'

DRG JOB No. 22334

304b(7)Biii COMP

LAYOUT DRAWING 5 OF 7

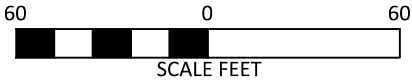
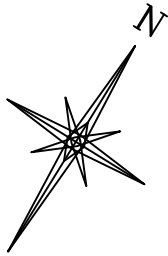
PRELIMINARY WELL COMPLETIONS AND
STIMULATION LAYOUT

LARAMIE ENERGY, LLC

LARAMIE 0993-29-01

NENE, SECTION 29, T. 9 S., R. 93 W., 6th P.M.,
MESA COUNTY, COLORADO

UNGRADED ELEVATION: 7457.7'
FINAL ELEVATION: 7462.8'
AREA OF DISTURBANCE: 8.3± ACRES
AREA OF WORKING PAD SURFACE: 3.7± ACRES
AREA OF ACCESS ROAD: 1.1± ACRES

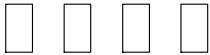


- WORKING PAD SURFACE (WPS)
- PROPOSED ACCESS ROAD
- PROPOSED GATHERING PIPELINE
- PROPOSED SALES LINE TO GATHERING
- PROPOSED PRODUCED WATER LINE
- PROPOSED DUMP LINE TO TANKS
- PROPOSED FLOWLINES TO SEPARATORS



TANK BATTERY W/
CONTAINMENT (70'x40'):
2 OIL / 4 PROD. WATER / 2
GUNBARREL

CHEMICAL STORAGE W/
SECONDARY CONTAINMENT



PRODUCTION EQUIPMENT:
4 - 4 PACK SEPARATORS
EACH 4-PACK SEPARATOR IS
EQUIPPED W/ 1 HEAT EXCHANGE
W/ BURNER & 1 GAS SCRUBBER

ENCLOSED COMBUSTION DEVICE
(TO BE INSTALLED IF REQUIRED
PER APEN)

KNOCKOUT PUMP



INSTALL 24" x 50' CULVERT



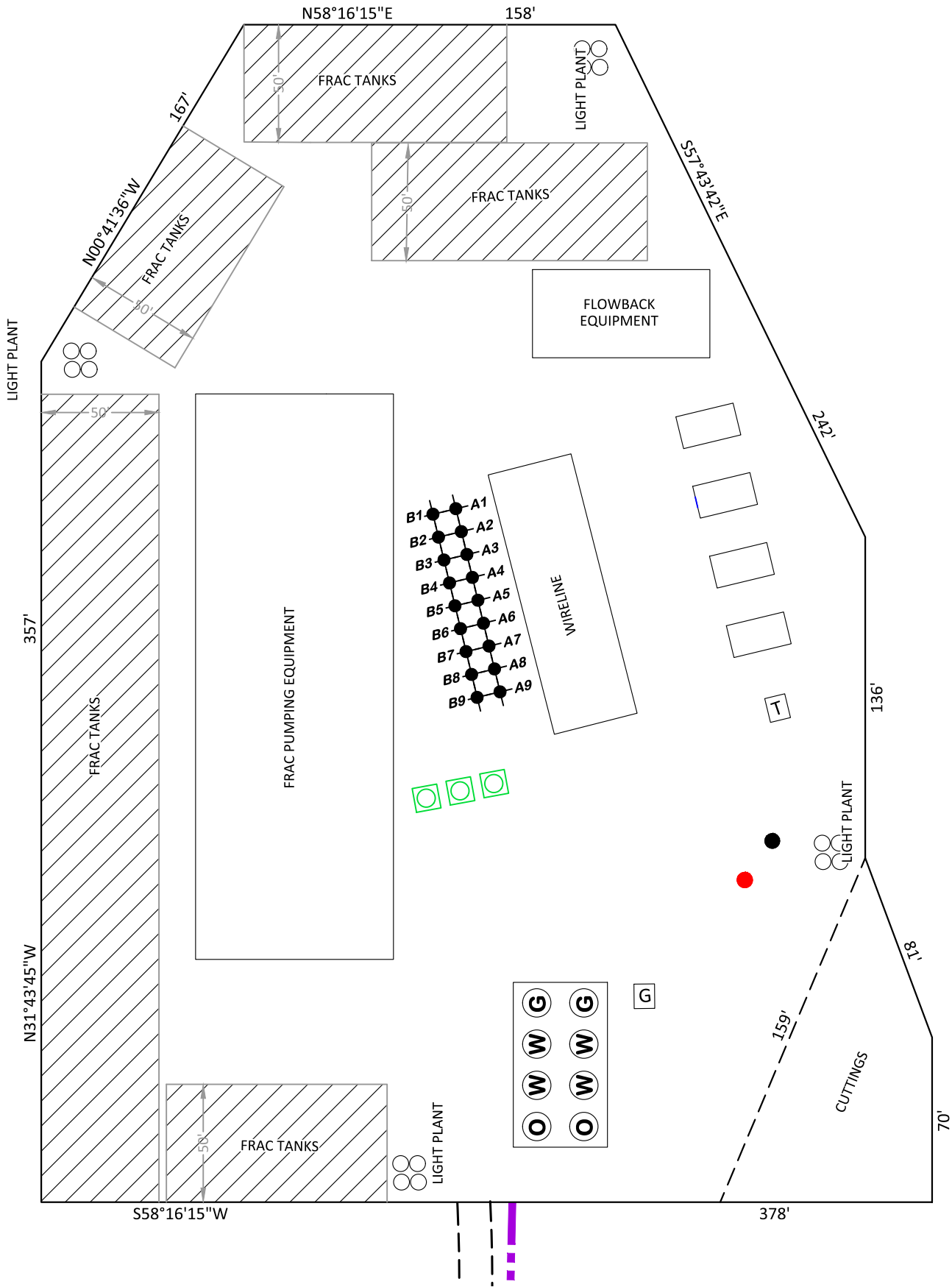
REMOTE TELEMETRY UNIT
& THERMOELECTRIC
GENERATOR



ELECTRIC GENERATOR

NOTES:

1. COMPLETIONS AND FLOWBACK OPERATIONS WILL BE CONDUCTED CONCURRENTLY.
2. COMPLETION OPERATIONS TO BE CONDUCTED CONTINUOUSLY.
3. EXHIBIT DEPICTS PRELIMINARY FRAC AND FLOWBACK EQUIPMENT LAYOUT. EQUIPMENT AND LAYOUT ARE SUBJECT TO CHANGE DEPENDING ON EQUIPMENT AVAILABILITY AND SITE CONDITIONS.
4. EIGHTY (80) FRAC TANKS. CAPACITY PER FRAC TANK: 500 BBLs. TOTAL FRAC TANK CAPACITY (80 FRAC TANKS): 40,000 BBLs.
5. EQUIPMENT LOCATED WITHIN THE "FRAC EQUIPMENT" ENVELOPE: HYDRAULIC STIMULATION CONTROL TRAILER, DIESEL FRAC PUMPS, CHARGE PUMP, AND TEMPORARY CHEMICAL STORAGE
6. EACH LIGHT PLANT IS A SELF-CONTAINED UNIT WITH A GENERATOR AND AUXILIARY POWER SOURCE.
7. ACTUAL WATER LINE AND WATER PUMP PLACEMENT DEPENDENT ON PRE-COMPLETION ALIGNMENT OF FRAC TANKS.
8. OPERATOR WILL UTILIZE HEAT PUMPS FOR WINTER OPERATIONS BASED ON LOCATION SPACING.
9. FLOWBACK SUPPORT TRAILER IS LOCATED WITHIN "FLOWBACK SEPARATORS" ENVELOPE.
10. PLEASE REFER TO THE CONSTRUCTION LAYOUT DRAWING FOR STORMWATER CONTROL MEASURES.



BEFORE DIGGING
CALL FOR
UTILITY LINE LOCATION

LARAMIE 0993-29-01

LAYOUT DRAWING 6 OF 7

FLOWBACK EQUIPMENT LAYOUT
LARAMIE ENERGY, LLC
LARAMIE 0993-29-01
NENE, SECTION 29, T. 9 S., R. 93 W., 6th P.M.,
MESA COUNTY, COLORADO

DRG RIFFIN & ASSOCIATES, INC.
1414 ELK ST., ROCK SPRINGS, WY 82901
(307) 362-5028

DRAWN: 8/10/2023 - DEH

SCALE: 1" = 60'

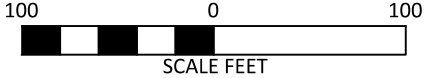
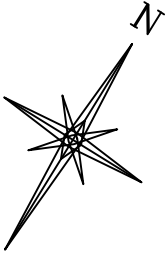
REVISED: 5/7/2025 - NGJ

DRG JOB No. 22334

REVISED SHLs

304b(7)Biv FLOWBACK

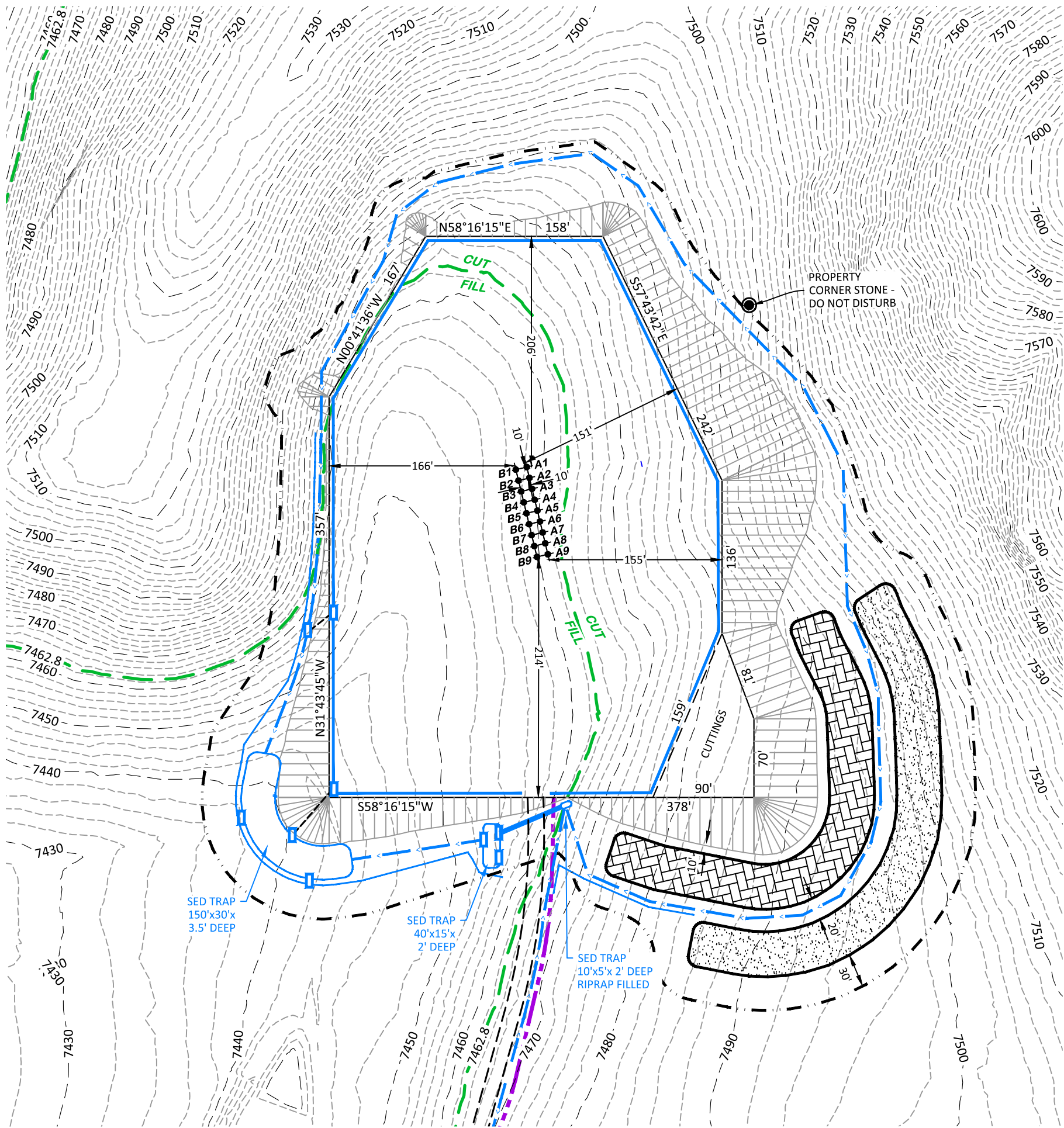
UNGRADED ELEVATION: 7457.7'
FINAL ELEVATION: 7462.8'
PROPOSED AREA OF DISTURBANCE: 8.3± ACRES
DRAINS TO GROUNDHOG GULCH



- WORKING PAD SURFACE (WPS)
- OIL AND GAS LOCATION APPROX. AREA OF DISTURBANCE
- CONSTRUCT V-DITCH AND BERM ALONG EDGE OF WPS
- CONSTRUCT BERM AND DITCH ALONG TOE OF FILL SLOPES
- CONSTRUCT DIVERSION DITCH
- CONSTRUCT SEDIMENT TRAP
- ROCK ARMOR INLET/OUTLET/OUTFALL
- FLEX PIPE W/ ROCK ARMOR INLET/OUTLET
- EXISTING FENCE LINE TO BE RELOCATED WHEN NECESSARY
- PROPOSED ACCESS ROAD
- PROPOSED GATHERING PIPELINE
- TOPSOIL PILE 470'x40'x14' HIGH WITH 2:1 SLOPES WITH STRAW WATTLES
- EXCESS MATERIAL PILE 435'x40'x10' HIGH WITH 2:1 SLOPES WITH STRAW WATTLES
- INSTALL 24" CULVERT

CONSTRUCTION BMP's WILL BE INSTALLED IN ACCORDANCE WITH CDPHE CONSTRUCTION PERMIT AND BEST PRACTICES AS IDENTIFIED BY THE CDPHE. ONCE CONSTRUCTION IS COMPLETED, THE SITE WILL BE REVIEWED BY CERTIFIED STORM WATER PERSONNEL AND PERMANENT BMP's WILL BE INSTALLED WHERE DEEMED NECESSARY TO MANAGE SEDIMENT MIGRATION OFFSITE.

BEFORE DIGGING
CALL FOR
UTILITY LINE LOCATION



LARAMIE 0993-29-01

STORMWATER MANAGEMENT PLAN

BEST MANAGEMENT PRACTICES
LARAMIE ENERGY, LLC
LARAMIE 0993-29-01
NENE, SECTION 29, T. 9 S., R. 93 W., 6th P.M.,
MESA COUNTY, COLORADO

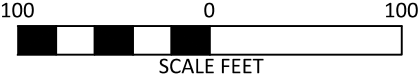
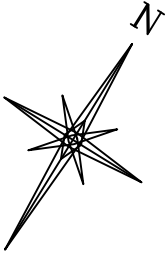
DRG RIFFIN & ASSOCIATES, INC.
1414 ELK ST., ROCK SPRINGS, WY 82901

DRAWN: 6/8/2023 - DEH SCALE: 1" = 100'

REVISED: 5/7/2025 - NGJ DRG JOB No. 22334

REVISED SHLs 304c(15) BMP

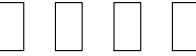
APPROXIMATE DISTURBANCE AREA 8.3± ACRES
PROPOSED RECLAMATION AREA: 6.1± ACRES
INTERIM RECLAMATION DISTURBANCE: 2.2± ACRES



- PRODUCTION PAD SURFACE
- OIL AND GAS LOCATION APPROX. AREA OF DISTURBANCE
- CONSTRUCT DITCH AND BERM ALONG TOE OF FILL SLOPE
- CONSTRUCT V-DITCH AND BERM ALONG EDGE OF PRODUCTION PAD
- CONSTRUCT SEDIMENT TRAP
- ROCK ARMOR INLET/OUTLET/OUTFALL
- PROPOSED ACCESS ROAD
- PROPOSED GATHERING PIPELINE
- PROPOSED SALES LINE TO GATHERING
- PROPOSED PRODUCED WATER LINE
- PROPOSED DUMP LINE TO TANKS
- PROPOSED FLOWLINES TO SEPARATORS
- PROPOSED RECLAIMED AREA AT INTERIM RECLAMATION



TANK BATTERY W/
CONTAINMENT (70'x40'):
2 OIL / 4 PROD. WATER / 2
GUNBARREL



PRODUCTION EQUIPMENT:
4 - 4 PACK SEPARATORS
EACH 4-PACK SEPARATOR IS
EQUIPPED W/ 1 HEAT EXCHANGE
W/ BURNER & 1 GAS SCRUBBER



INSTALL 24" x 50' CULVERT



REMOTE TELEMETRY UNIT
& THERMOELECTRIC
GENERATOR

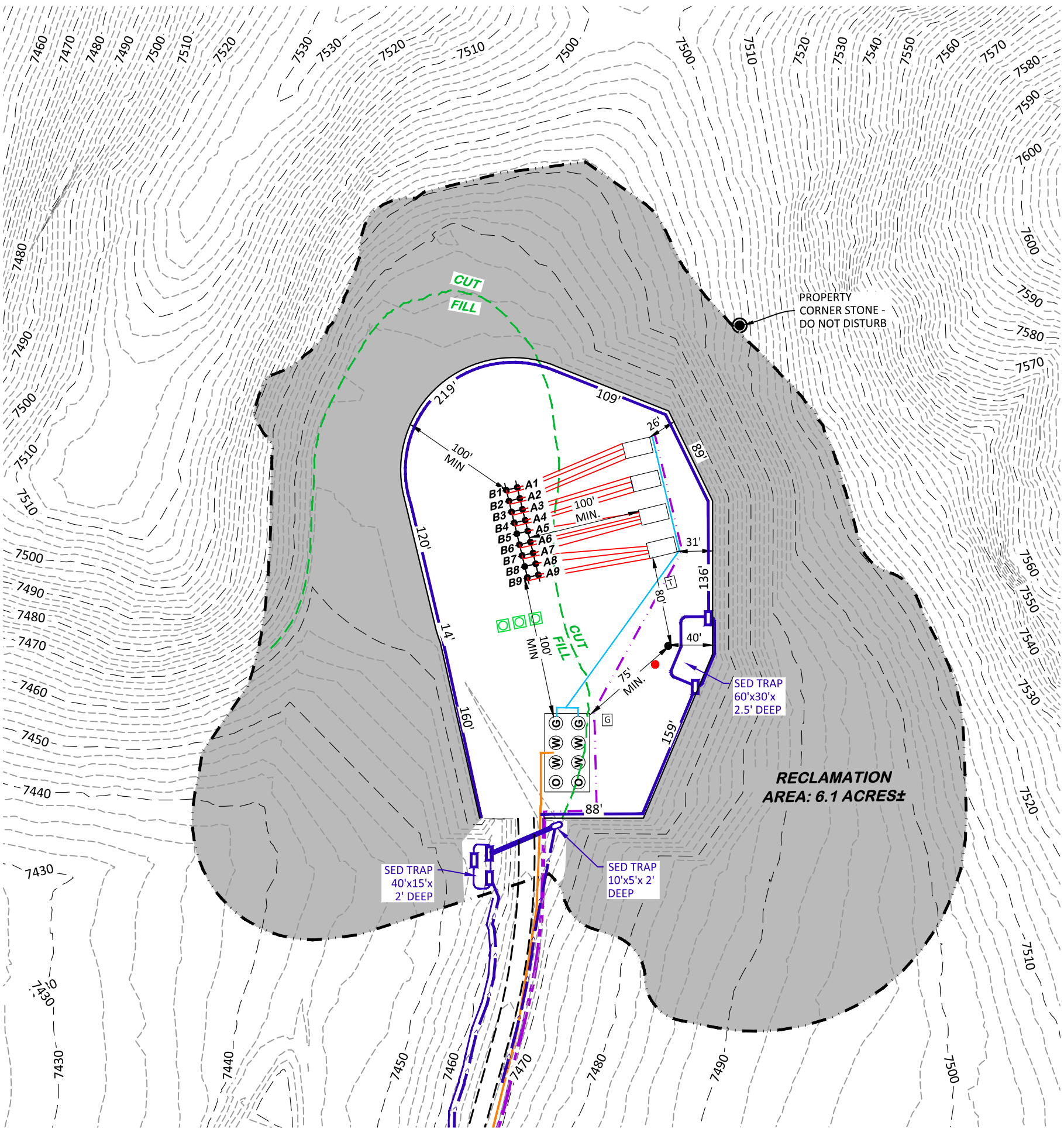


ELECTRIC GENERATOR

CHEMICAL STORAGE W/
SECONDARY CONTAINMENT

ENCLOSED COMBUSTION DEVICE
(TO BE INSTALLED IF REQUIRED
PER APEN)

KNOCKOUT PUMP



BEFORE DIGGING
CALL FOR
UTILITY LINE LOCATION

LARAMIE 0993-29-01

INTERIM RECLAMATION PLAN

PROPOSED INTERIM RECLAMATION
LARAMIE ENERGY, LLC
LARAMIE 0993-29-01
NENE, SECTION 29, T. 9 S., R. 93 W., 6th P.M.,
MESA COUNTY, COLORADO

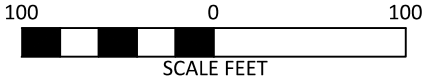
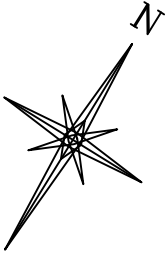
DRG RIFFIN & ASSOCIATES, INC.
1414 ELK ST., ROCK SPRINGS, WY 82901

DRAWN: 6/8/2023 - DEH SCALE: 1" = 100'

REVISED: 5/7/2025 - NGJ DRG JOB No. 22334

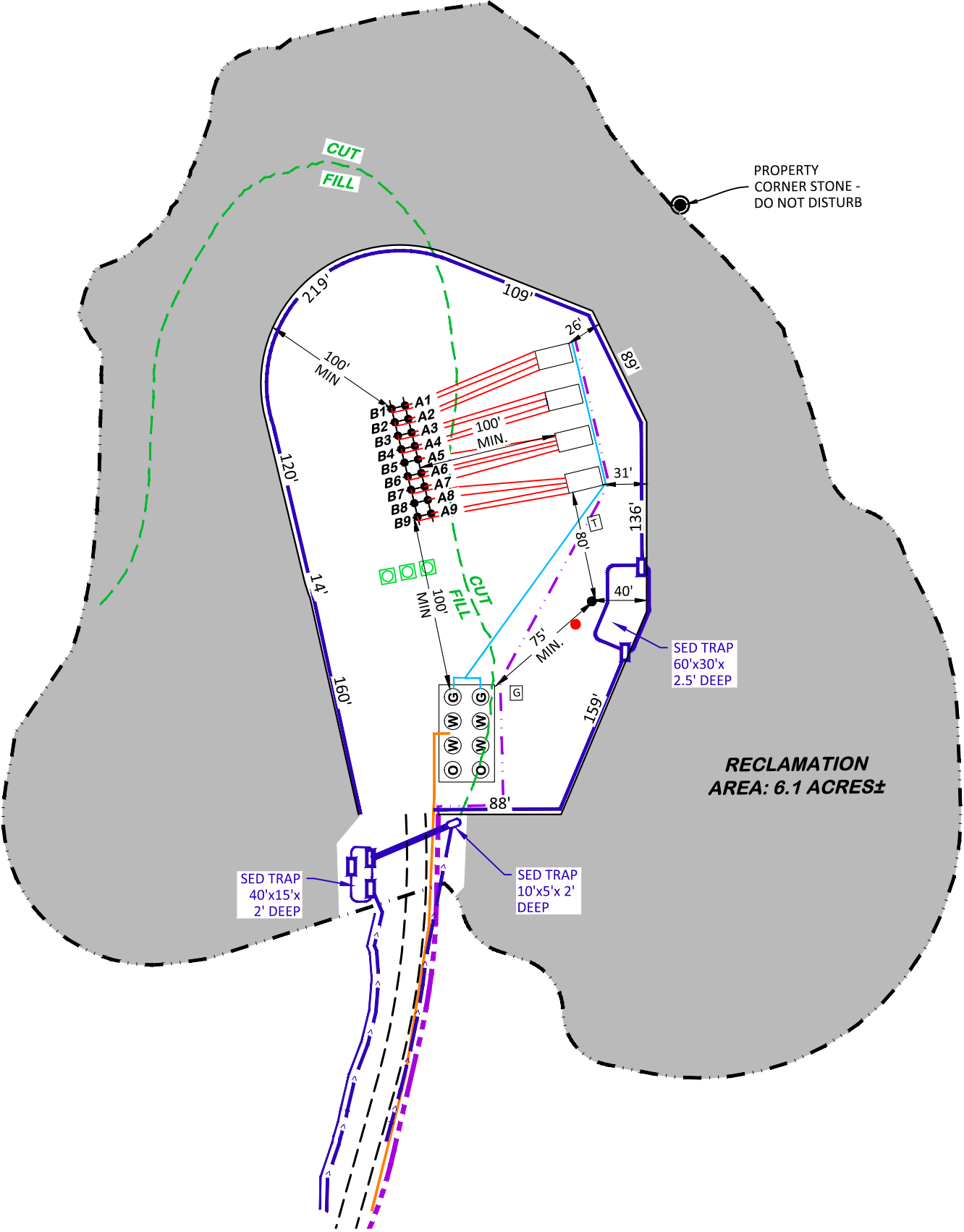
REVISED SHLs 304c(16) RECLAMATION

FINAL ELEVATION: 7462.8'
AREA OF DISTURBANCE: 8.3± ACRES
AREA OF PRODUCTION PAD SURFACE: 2.2± ACRES



- PRODUCTION PAD SURFACE
- OIL AND GAS LOCATION APPROX. AREA OF DISTURBANCE
- CONSTRUCT V-DITCH AND BERM ALONG EDGE OF PRODUCTION PAD
- CONSTRUCT SEDIMENT TRAP
- ROCK ARMOR INLET/OUTLET/OUTFALL
- PROPOSED ACCESS ROAD
- PROPOSED GATHERING PIPELINE
- PROPOSED SALES LINE TO GATHERING
- PROPOSED PRODUCED WATER LINE
- PROPOSED DUMP LINE TO TANKS
- PROPOSED FLOWLINES TO SEPARATORS
- PROPOSED RECLAIMED AREA AT INTERIM RECLAMATION

- TANK BATTERY W/ CONTAINMENT (70'x40'):
2 OIL / 4 PROD. WATER / 2 GUNBARREL
- PRODUCTION EQUIPMENT:
4 - 4 PACK SEPARATORS
EACH 4-PACK SEPARATOR IS EQUIPPED W/ 1 HEAT EXCHANGE W/ BURNER & 1 GAS SCRUBBER
- INSTALL 24" x 50' CULVERT
- REMOTE TELEMETRY UNIT & THERMOELECTRIC GENERATOR
- ELECTRIC GENERATOR
- CHEMICAL STORAGE W/ SECONDARY CONTAINMENT
- ENCLOSED COMBUSTION DEVICE (TO BE INSTALLED IF REQUIRED PER APEN)
- KNOCKOUT PUMP



LARAMIE 0993-29-01

BEFORE DIGGING
CALL FOR
UTILITY LINE LOCATION

DRG RIFFIN & ASSOCIATES, INC.
1414 ELK ST., ROCK SPRINGS, WY 82901
(307) 362-5028

DRAWN: 6/8/2023 - DEH
REVISED: 5/7/2025 - NGJ

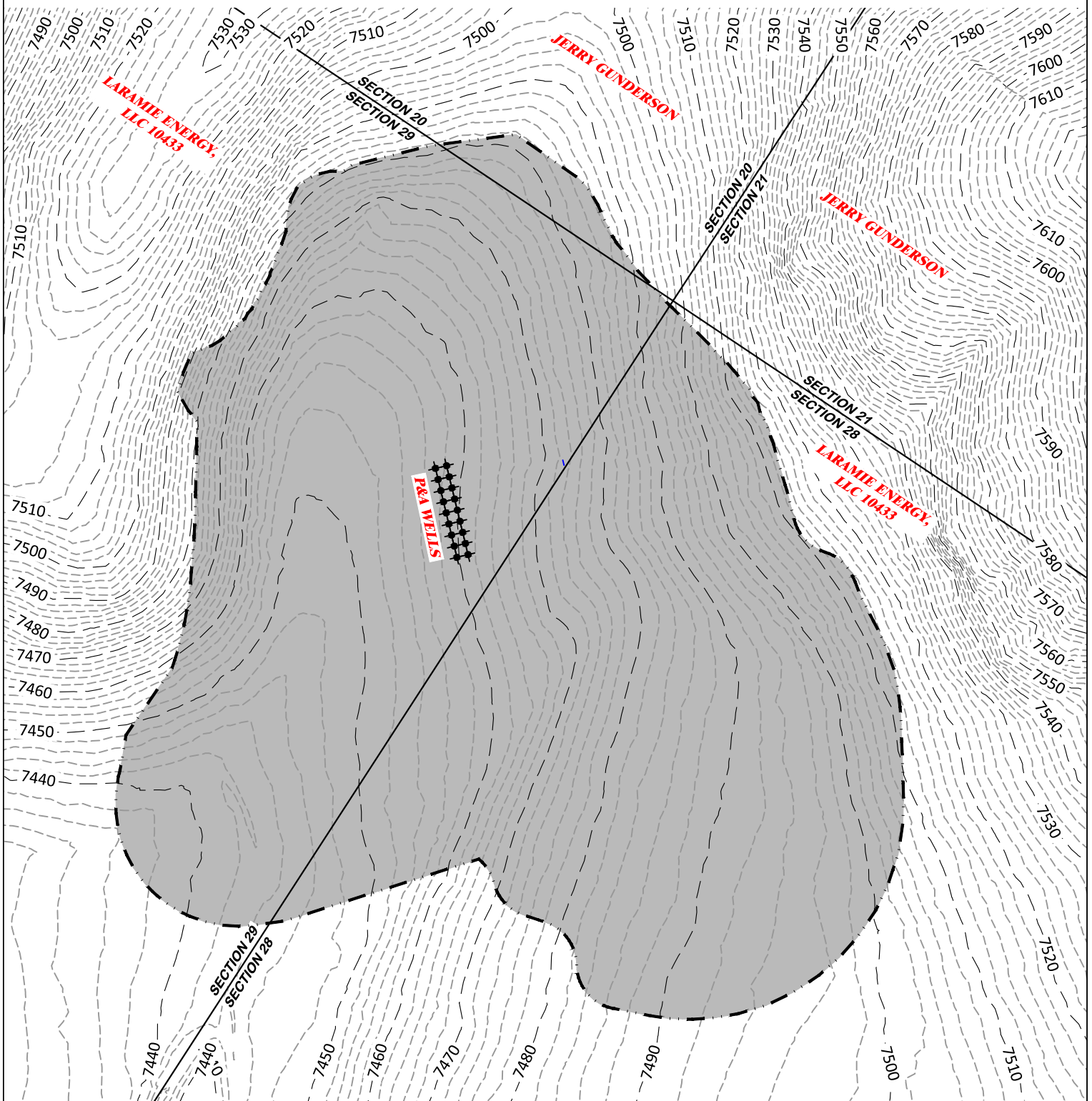
SCALE: 1" = 100'
DRG JOB No. 22394
REVISED SHLs

304b(7)BV FACILITY

LAYOUT DRAWING 7 OF 7
PRELIMINARY FACILITY LAYOUT
LARAMIE ENERGY, LLC
LARAMIE 0993-29-01
NENE, SECTION 29, T. 9 S., R. 93 W., 6th P.M.,
MESA COUNTY, COLORADO

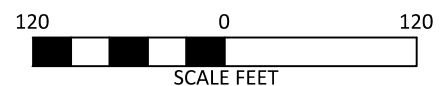
APPROXIMATE DISTURBANCE AREA 8.3± ACRES
PROPOSED FINAL RECLAMATION AREA: 8.3± ACRES

PROPOSED FINAL ABANDONMENT RECLAMATION



BEFORE DIGGING
CALL FOR
UTILITY LINE LOCATION

LARAMIE 0993-29-01



DRG RIFFIN & ASSOCIATES, INC.
(307) 362-5028 1414 ELK ST., ROCK SPRINGS, WY 82901

DRAWN: 8/10/2023 - DEH

SCALE: 1" = 120'

REVISED: 5/7/2025 - NGJ

DRG JOB No. 22334

REVISED SHLs

BLM ABANDON RECLAMATION

FINAL ABANDONMENT

PROPOSED FINAL ABANDONMENT RECLAMATION
LARAMIE ENERGY, LLC
LARAMIE 0993-29-01
NENE, SECTION 29, T. 9 S., R. 93 W., 6th P.M.,
MESA COUNTY, COLORADO