

Project: Mesa County, CO  
Site: Laramie 0993-29-01  
Well: Laramie 29-01 Fed 0993-21-17W  
Wellbore: OH  
Design: Design #2  
Latitude: 39.254619  
Longitude: -107.783936  
Ground Level: 7463.0  
RKB=30'; @ 7493.0usft (TBD)

PROJECT DETAILS: Mesa County, CO  
Geodetic System: US State Plane 1983  
Datum: North American Datum 1983  
Ellipsoid: GRS 1980  
Zone: Colorado Central Zone  
System Datum: Mean Sea Level

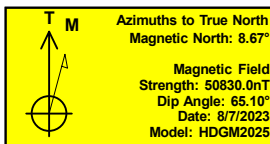
REFERENCE INFORMATION  
Vertical (TVD) Reference: RKB=30'; @ 7493.0usft (TBD)  
Section (VS) Reference: Slot - A8(0.0N, 0.0E)  
Measured Depth Reference: RKB=30'; @ 7493.0usft (TBD)  
Calculation Method: Minimum Curvature

#### FORMATION TOP DETAILS

TVDPATH	MDPATH	FORMATION
2739.0	2896.6	Wasatch 'G' Sand
3221.0	3418.9	Fort Union
3901.0	4155.7	Lower Wasatch
4684.0	5004.1	Ohio Creek
5092.0	5446.2	Williams Fork
6115.0	6504.3	TOG
7314.0	7703.3	Cameo
7640.0	8029.3	Rollins
8184.0	8573.3	Cozzette
8357.0	8746.3	Corcoran

#### SECTION DETAILS

MD	Inc	Azi	TVD	+N/-S	+E/-W	Dleg	TFace	Vsect	Annotation
0.0	0.00	0.00	0.0	0.0	0.0	0.00	0.00	0.0	
250.0	0.00	0.00	250.0	0.0	0.0	0.00	0.00	0.0	KOP (Build 2.5° / 100)
1155.9	22.65	70.44	1132.5	59.2	166.5	2.50	70.44	176.7	EOB @ 22.65° Inc. / 70.44° Azm
5598.5	22.65	70.44	5232.5	631.9	1778.4	0.00	0.00	1887.3	Drop 2.5° / 100'
6504.3	0.00	0.00	6115.0	691.1	1944.9	2.50	180.00	2064.0	EOD @ Vertical
9096.3	0.00	0.00	8707.0	691.1	1944.9	0.00	0.00	2064.0	TD @ 9096.3' MD / 8707.0' TVD

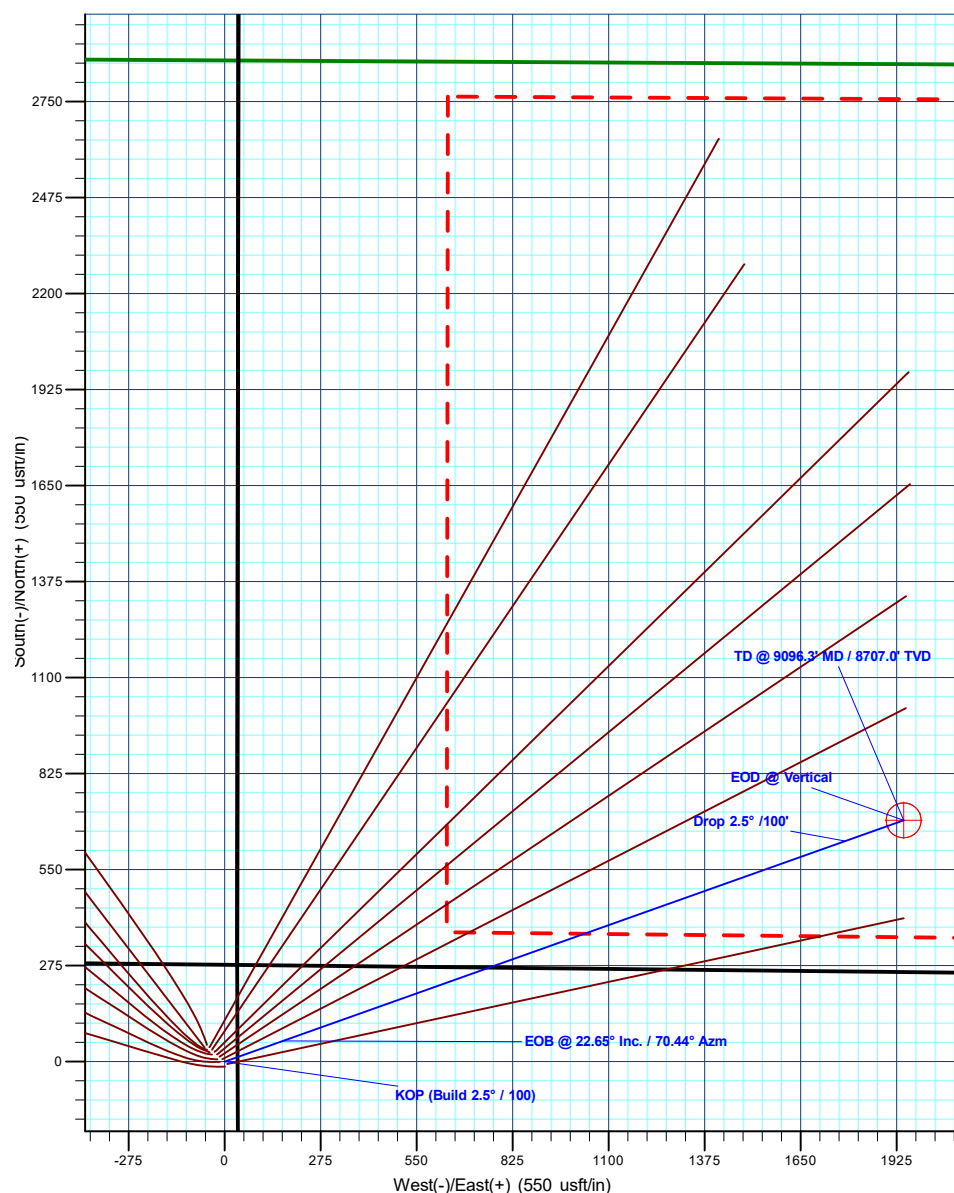
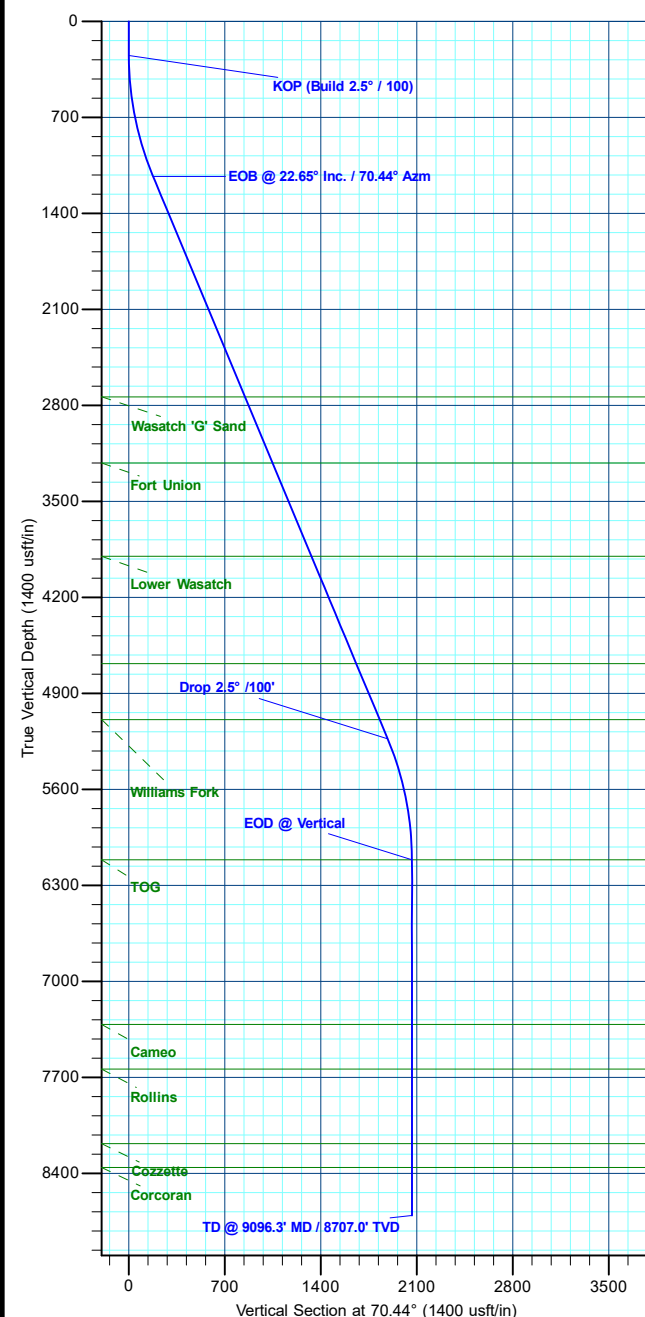


#### DESIGN TARGET DETAILS

Name	TVD	+N/-S	+E/-W	Northing	Easting	Latitude	Longitude
PBHL - Laramie Fed 21-17W	8707.0	691.1	1944.9	1526400.32	2355291.50	39.256516	-107.777068

#### WELL DETAILS: Laramie 29-01 Fed 0993-21-17W

+N/-S	+E/-W	Ground Level : 7463.0	Northing	Easting	Latitude	Longitude	A8
0.0	0.0		1525758.36	2353329.86	39.254619	-107.783936	



Plan: Design #2 (Laramie 29-01 Fed 0993-21-17W/OH)

Created By: Will Jircik

Date: 11:15, May 08 2025