



WSI Enterprises, Inc.
2808 NW County Rd
Hobbs, NM 88240-9215
5053260308
www.wsienterprises.com

INVOICE

BILL TO

American Helium
American Helium

SHIP TO

Ken McQueen
Andy's Mesa 38
San Miguel County, Colorado

INVOICE # 56448

DATE 05/27/2025

TERMS Net 30

SHIP DATE

04/16/2025

REP

Gabe Salazar

QTY	ITEM	DESCRIPTION	RATE	AMOUNT
1	Dispatch	Dispatch: Estimated Time Load up equipment, Drive to location, Prep tools needed to change out production tree. Rig up slickline lubricator to set Tubing Plugs, bleed down pressure and swap out production tree with updated tree. Slickline to Retrieve Tubing Plugs. (2) Field Technicians	0.00	0.00T
24	Field Labor - FMN	Field Labor - FMN Load up equipment, Drive to location, Prep tools needed to change out production tree. Rig up slickline lubricator to set Tubing Plugs, bleed down pressure and swap out production tree with updated tree. Slickline to Retrieve Tubing Plugs. (2) Field Technicians	70.00	1,680.00
300	Mileage p/mile	Mileage p/mile	2.75	825.00
1	Crane Truck - Small	Crane Truck - Small	135.00	135.00T
1	Hydraulic Torque Tool	Hydraulic Torque Tool	400.00	400.00T
1	Services - Misc.	Services - Misc. 3rd party to set slick line tubing plugs to change out production tree.	4,000.00	4,000.00T
1	Dispatch	Dispatch: 10299 Full Wellhead Identification, Identify leak and equipment needed to be replaced. Company Representative Neil Hankins	0.00	0.00
1	Services - Misc.	Services - Misc. Dispatch: 10299 Full Wellhead Identification, Identify leak and equipment needed to be replaced. Company Representative Neil Hankins	700.00	700.00

Please Remit Payment To:

SUBTOTAL

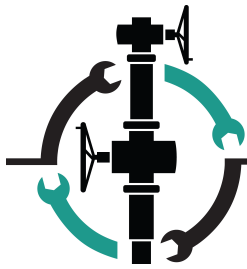
7,740.00

WSI Enterprises, Inc.
PO Box 6390
Farmington, NM 87499

TAX
TOTAL
BALANCE DUE

176.87
7,916.87
\$7,916.87

We appreciate your business.



WSI

A SCOUT SURFACE
SOLUTIONS COMPANY

WSI ENTERPRISES INC

2021 San Juan Blvd

Farmington, New Mexico 87401

Phone # 505-326-0308

Fax # 505-326-0388

Email reports@wsienterprises.com

Web Site www.wsienterprises.com

Ticket # 10299

General Information

Start Date	04/16/2025 07:00 AM	End Date	04/16/2025 05:00 PM
Customer	American Helium		
Contact	Neil Hankins		
Region	Farmington-Field		

Sales Order #	85797	Location/Well Name	Andy's Mesa Federal #38
Truck #	323	WBS Code #	
Ticket Reviewed by:	Nathan	Cost Center #	
Purchase Order #		AFE #	

State - County	CO-San Miguel County
-----------------------	----------------------

Description

Map out well, load any supplies that might be needed, travel to location, spot in. Conduct well ID. Verify leak at 7-1/16"5M connection, no port on B2P adapter to verify pressure or attempt bleed down of void, check pressures, master valve has LOTO no way to verify tbg pressure, gauge is reading 2.8psi, casing pressure 381psi. Attempt to tighten leaking connection with no success. Measure heights of all equipment that will be replaced. May need to bring out 2" nipples to extend flow line depending on equipment height. Work lock pins, two on front of the system are operational, one in the back is very hard to operate, the pin near the leak is seized. Offside casing valve will not operate; production side casing valve will partially operate. Dig out to expose 11" connection, there is no BLF just a 1" injection port with plug that will not come out. Prep studs and nuts for tree replacement. Take necessary pictures, Secure well, clean up, travel in. Would recommend setting tubing plugs via slickline to conduct tree swap...if there is BPV prep in tbghgr it is more than likely bad. Casing valves could use servicing as well possibly changed out. Possibility that the ring groove on the tbghd may have been compromised, will not know until tree has been removed.

WELL ID:

Cactus style Cameron Tubing Head: 11"3M x 7-1/16"5M w/ 2-1/16"5M SSO with 2-1/16"5M casing valves, with 2-1/16"5M x 2"LP companion flanges

TREE: 7-1/16"5M x 2-9/16"5M B2P w/ no port, single 2-9/16"5M master valve (WKM) with 2-9/16"5M x 2-7/8" companion flange top, 2-7/8" plunger catcher

Services

Service	Description	UoM	Qty	Rate	Total
Labor : Field Labor - Colorado	ND	HR	10	\$70.00	\$700.00
Labor : Mileage p/mile - CO	Mileage p/mile - CO-323	MI	300	\$0.00	\$0.00

Total

\$700.00

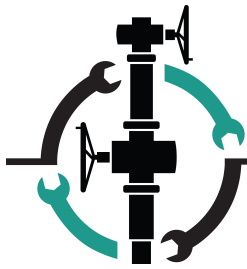
NOTES: Charges are Estimates. Sales Tax May Apply

Supplier Signature

Buyer Signature



Personnel	
Employee	Hours
Nathan Duran : Field Labor	10



WSI

A SCOUT SURFACE
SOLUTIONS COMPANY

WSI ENTERPRISES INC

2021 San Juan Blvd

Farmington, New Mexico 87401

Phone # 505-326-0308

Fax # 505-326-0388

Email reports@wsienterprises.com

Web Site www.wsienterprises.com

Ticket # 11009

General Information

Start Date	05/28/2025 04:00 AM	End Date	05/28/2025 08:00 PM
Customer	American Helium		
Contact	Neil Hankins		
Region	Farmington-Field		

Sales Order #	85797	Location/Well Name	Andy's Mesa Federal #38
Truck #	323, 182	Ticket Reviewed by:	gabe salazar
WBS or Cost Center #		Purchase Order #	
AFE #			
State - County	CO-San Miguel County		

Description

Coordinates... Andy's Mesa Federal #38
LAT:38.054250, LONG:-108.642850

Load equipment, secure load. Travel to location, space spot in, JSA. R/U slick line RIH with gauge ring, RIH set plug 100'. R/D slick line. R/U torque equipment, break down tree assembly. Fight old rusted adapter studs and nuts, have to use grinder and cutting wheel to cut all studs. Clean bowl, ring groove. Ring groove showing signs of pitting. Install seal sub, ring gasket, P/U tree torque into place. R/U HTP avoid to 1500 psi 10 min. Good test no leaks, bleed off pressure, R/D equipment. Finish tie on of production lines. R/U slick line RIH and pull plug. R/D slick line, load all equipment for repairs, secure load, secure well. Clean up travel in and offload all equipment used and new.

Extra equipment used...

1) 2" 602 hammer union

1) 2" x 9" nipple 90-5181-0900

Services

Service	Description	UoM	Qty	Rate	Total
Labor : Field Labor - Colorado	ND	HR	16	\$70.00	\$1,120.00
Labor : Field Labor - Colorado	CS	HR	16	\$70.00	\$1,120.00
Labor : Mileage p/mile - CO	Mileage p/mile - CO	MI	300	\$2.75	\$825.00
Equipment : Torque Tool		EA	1	\$400.00	\$400.00
Equipment : Pump-Hand Test Hydraulic		EA	1	\$30.00	\$30.00
Equipment : Grinder		EA	1	\$25.00	\$25.00
Equipment : Crane Truck - Small		HR	1	\$135.00	\$135.00
Labor : Services - Misc.	3rd party to set slickline	EA	1	\$4,000.00	\$4,000.00

Total

\$7,655.00

NOTES: Charges are Estimates. Sales Tax May Apply

Supplier Signature

Buyer Signature



Personnel	
Employee	Hours
Nathan Duran : Field Labor	16
Cody Spicer : Field Labor	16



American Helium

ANDY'S MESA FEDERAL #38

(SESW) SECTION 21, T44N, R16W

LAT: 38.054250, LONG: -108.642850

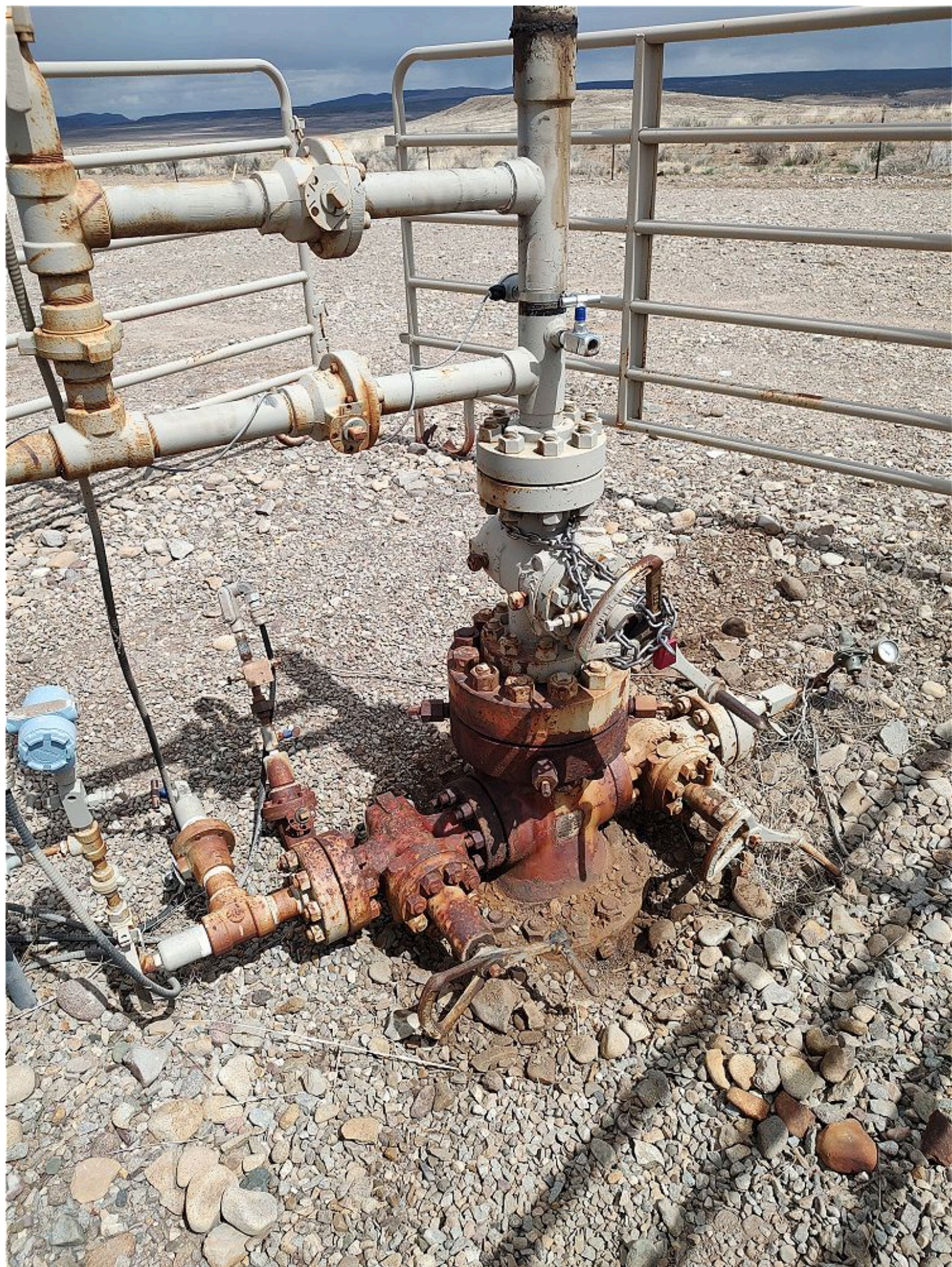
SHL: 716' FSL & 1935' FWL

LEASE # COC45989

API # 05-113-06127

SAN MIGUEL COUNTY, CR-R25

Emergency # (435) 631-2239 or 911







CAMERON

ASSY NO.

2120966-0-01

BRAND

CACTUS

DIM
REF

N2

TYPE

6

CSG
TYPE

V2

CSG
SIZE

N/A

THRU
SIZE

6.81

2120966-0-01