

Antler Energy LLC  
USA-Clark- Millison 1  
Location #313122



Main tank battery



Unused equipment

Antler Energy LLC  
USA-Clark- Millison 1  
Location #313122



Unused equipment



Debris



**Antler Energy LLC  
USA-Clark- Millison 1  
Location #313122**



**Inadequate tank berm**



**Inadequate tank berm**



**Antler Energy LLC  
USA-Clark- Millison 1  
Location #313122**



**Open end tank valves**



**Unused equipment**



**Antler Energy LLC  
USA-Clark- Millison 1  
Location #313122**



**Unused equipment**



**Unused equipment**

**Antler Energy LLC  
USA-Clark- Millison 1  
Location #313122**



**Unused equipment**



**Unused equipment**



**Antler Energy LLC  
USA-Clark- Millison 1  
Location #313122**



**Unused equipment**



**Unused equipment**



**Antler Energy LLC  
USA-Clark- Millison 1  
Location #313122**



**Missing information**



**Unused equipment**



**Antler Energy LLC  
USA-Clark- Millison 1  
Location #313122**



**Storage shack**



**Unused equipment**



Antler Energy LLC  
USA-Clark- Millison 1  
Location #313122



Well sign



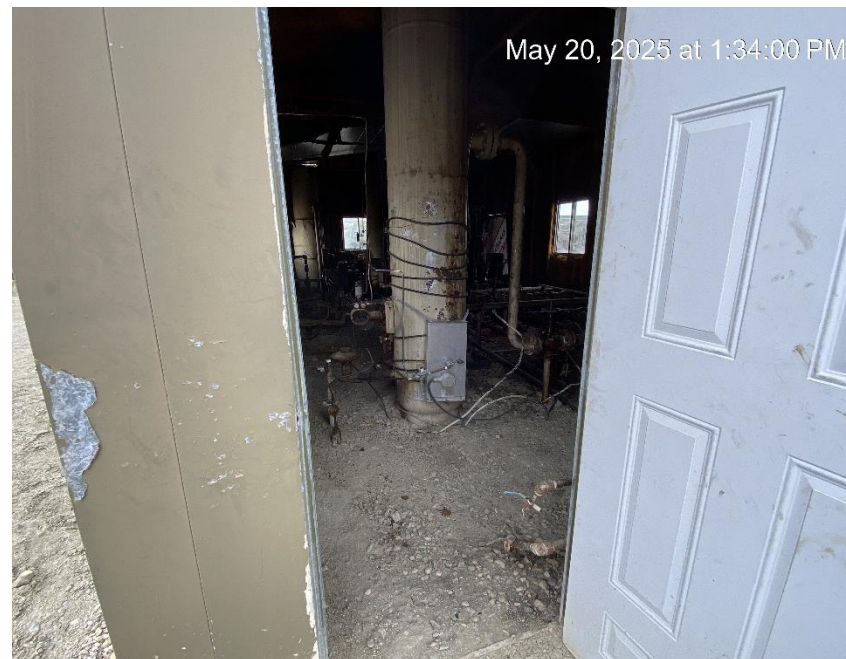
Unused equipment



**Antler Energy LLC  
USA-Clark- Millison 1  
Location #313122**



**Production shack**



**Production shack**

**Antler Energy LLC  
USA-Clark- Millison 1  
Location #313122**



**3 meter runs for 1 well?**



**Production building**



**Antler Energy LLC  
USA-Clark- Millison 1  
Location #313122**



**Unused equipment**



**Unused equipment**



**Antler Energy LLC  
USA-Clark- Millison 1  
Location #313122**



**BHP Petroleum pit ID**



**BHP Petroleum pit ID**



**Antler Energy LLC  
USA-Clark- Millison 1  
Location #313122**



**Inadequate tank berm**



**Inadequate tank berm**



**Antler Energy LLC  
USA-Clark- Millison 1  
Location #313122**



**Unused equipment**



**2<sup>nd</sup> tank battery from main tank battery**



**Antler Energy LLC  
USA-Clark- Millison 1  
Location #313122**



**Well location from South entrance**



**Well location from North corner**