

BLEDSE 8-15-5-45

API # 125-09621 Loc. # 336966

FIELD NAME BALLYNEAL - #1970

Spud Date 11/10/2005

Basin DENVER - JULESBURG

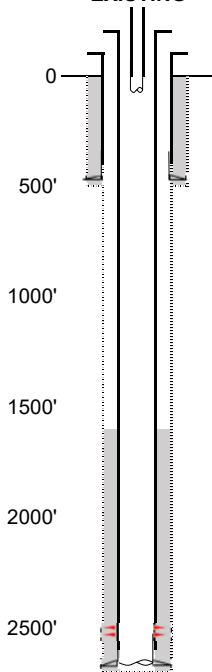
Location QQQQ Sec # Twn # Rg #

Elevation GL (ft) 3798

Elevation KB (ft) 3803

TD (ft) 2710

PBDT (ft) 2638

Formation Tops**EXISTING**Existing Casing and Cement Coverage

SURF: Size: 7", Hole Size: 9.875 in.

Depth: 477 ft., Weight: UNK

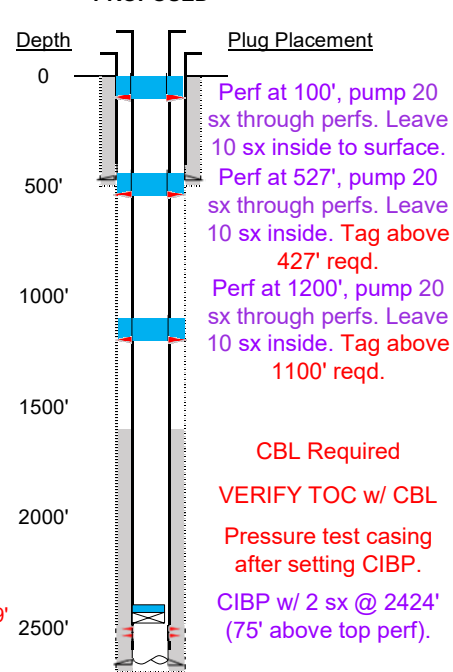
Cement: 75 sx, Top: 0 ft., Method: Vis

Deepest DWR w/in 1 mi. = 380'

1ST, Size: 4.5", Hole Size: 6.25"
 Depth: 2680', Weight: UNK
 Cement: 75 sx, TOC: 1640', Method: CBL

tubing UNK
 TOC = 1640' (CBL)
 NBRR Perfs 2499' - 2536'
 PBDT (ft) 2638'
 TD (ft) 2710'

NIOBRARA - 2499'

PROPOSEDDepthPlug Placement

Perf at 100', pump 20
 sx through perfs. Leave
 10 sx inside to surface.

Perf at 527', pump 20
 sx through perfs. Leave
 10 sx inside. Tag above
 427' reqd.

Perf at 1200', pump 20
 sx through perfs. Leave
 10 sx inside. Tag above
 1100' reqd.

CBL Required

VERIFY TOC w/ CBL

Pressure test casing
 after setting CIBP.

CIBP w/ 2 sx @ 2424'
 (75' above top perf).

NIOBRARA - 2499'