

**Robert L Bayless Producer LLC
Weaver Ridge 23-14
Location #316493**



Open end tank valve. Oily waste and stained soil.



Open end tank valve. Oily waste and stained soil.

**Robert L Bayless Producer LLC
Weaver Ridge 23-14
Location #316493**



Covered staining. Open end tank valve.

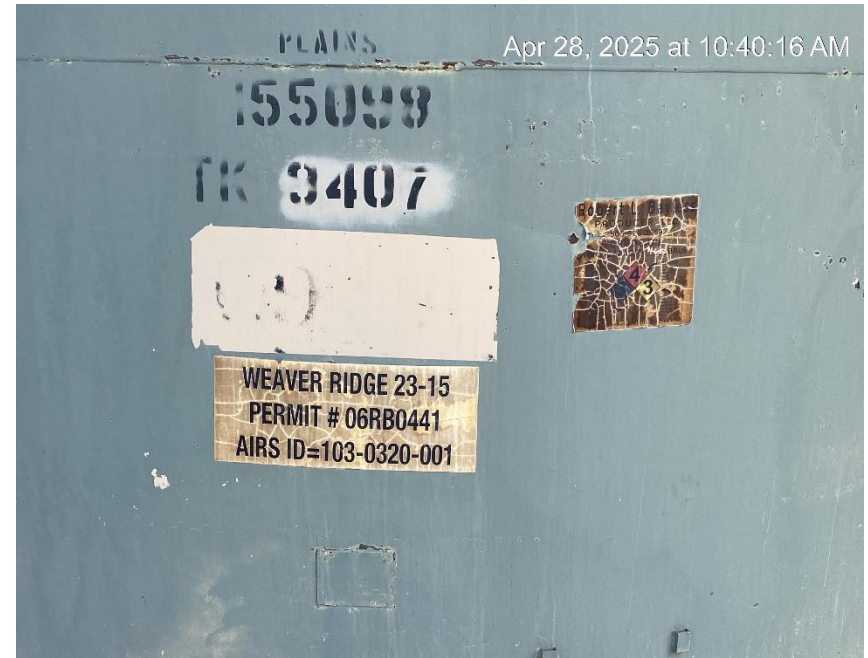


Damaged and incomplete tank labels

**Robert L Bayless Producer LLC
Weaver Ridge 23-14
Location #316493**

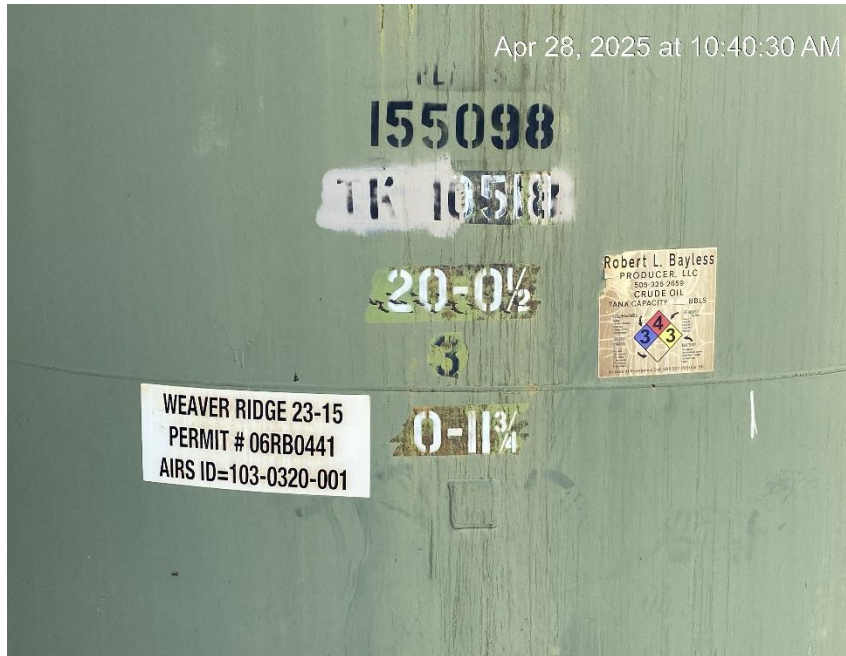


Damaged and incomplete tank labels

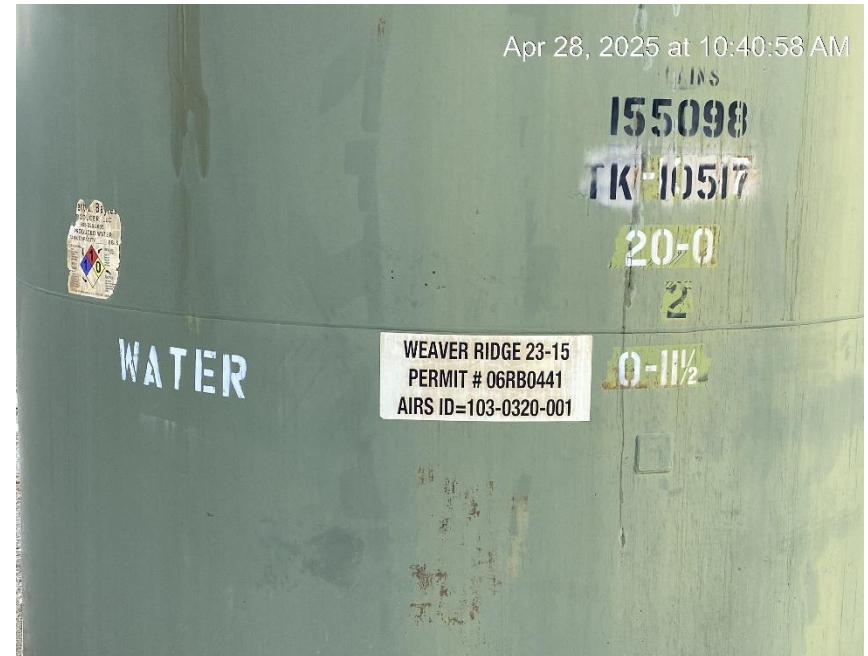


Damaged and incomplete tank labels

**Robert L Bayless Producer LLC
Weaver Ridge 23-14
Location #316493**



Damaged and incomplete tank labels



Damaged and incomplete tank labels

**Robert L Bayless Producer LLC
Weaver Ridge 23-14
Location #316493**



Oily waste and staining



Oily waste and staining

**Robert L Bayless Producer LLC
Weaver Ridge 23-14
Location #316493**



Oily waste and staining



Missing required information

**Robert L Bayless Producer LLC
Weaver Ridge 23-14
Location #316493**



Debris. Staining.



Leaking equipment. Staining

**Robert L Bayless Producer LLC
Weaver Ridge 23-14
Location #316493**

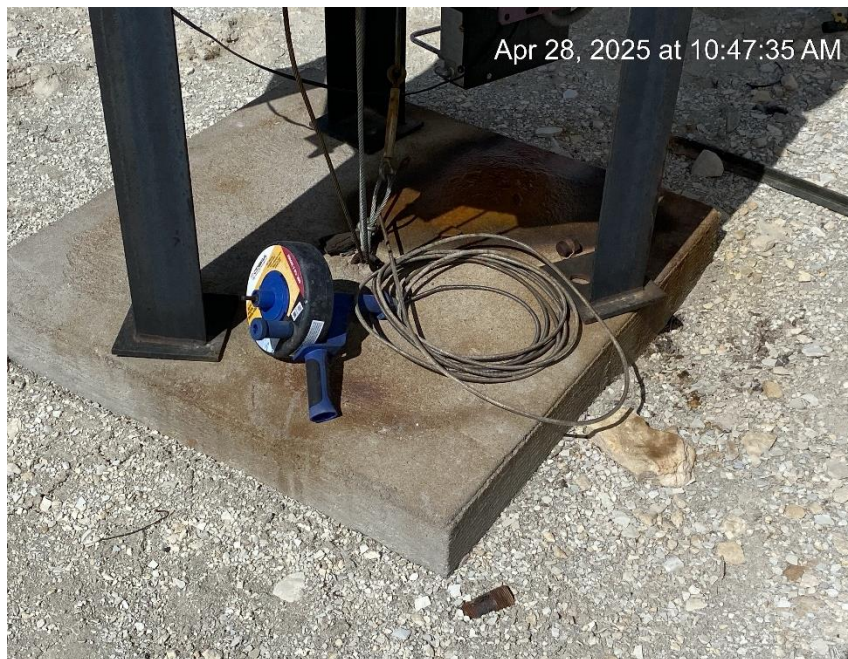


Unprotected riser



Unprotected risers

**Robert L Bayless Producer LLC
Weaver Ridge 23-14
Location #316493**



Debris and oily waste



Oily waste

**Robert L Bayless Producer LLC
Weaver Ridge 23-14
Location #316493**



Oily waste and stained soil



Debris

**Robert L Bayless Producer LLC
Weaver Ridge 23-14
Location #316493**



Debris



Debris

Robert L Bayless Producer LLC
Weaver Ridge 23-14
Location #316493

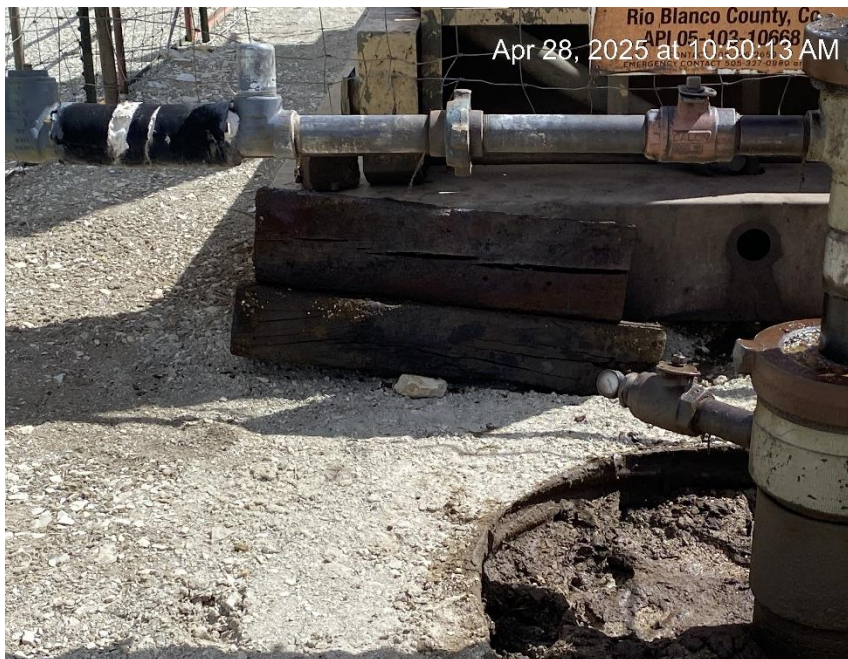


Faded and illegible label



Debris

Robert L Bayless Producer LLC
Weaver Ridge 23-14
Location #316493



Debris



Oily waste. Safety hazard.

**Robert L Bayless Producer LLC
Weaver Ridge 23-14
Location #316493**



Location from East end



Location from West end