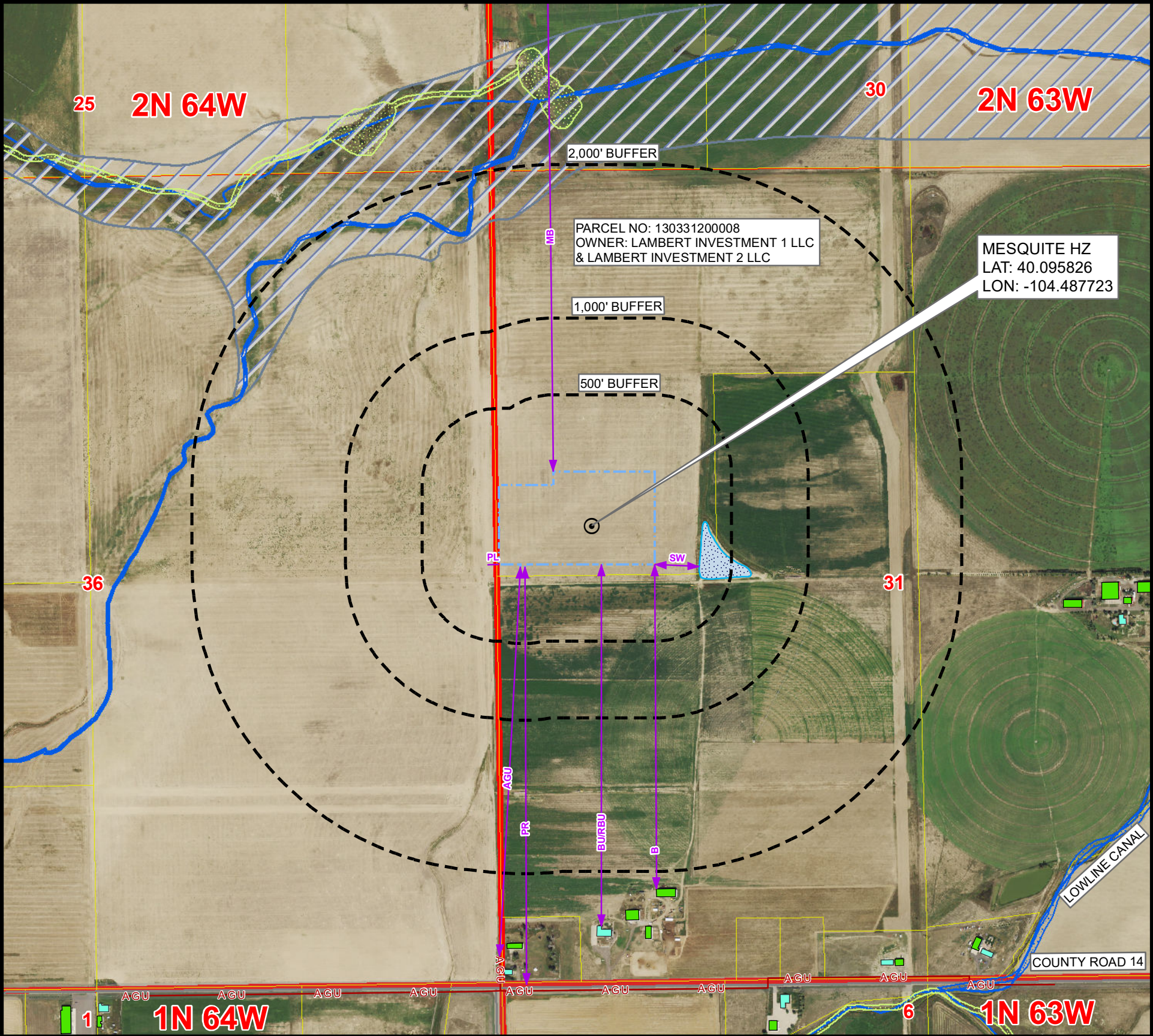


CULTURAL FEATURES MAP
MESQUITE HZ

SECTION 31, TOWNSHIP 2 NORTH, RANGE 63 WEST, 6TH P.M., WELD COUNTY, COLORADO



# OF CULTURAL FEATURES WITHIN	0-500 FEET	501-1,000 FEET	1,001-2,000 FEET
BUILDING UNIT (RESIDENTIAL & NON-RESIDENTIAL)	0	0	0
RESIDENTIAL BUILDING UNIT	0	0	0
HIGH OCCUPANCY BUILDING UNIT	0	0	0
SCHOOL PROPERTY	0	0	0
SCHOOL FACILITY	0	0	0
DESIGNATED OUTSIDE ACTIVITY AREA	0	0	0

MEASURED FROM THE NEAREST		EDGE OF WORKING PAD
B	BUILDING	±2115' S
BU	BUILDING UNIT	±2356' S
RBU	RESIDENTIAL BUILDING UNIT	±2356' S
HOB	HIGH OCCUPANCY BUILDING UNIT	5280'+ NW
DOAA	DESIGNATED OUTSIDE ACTIVITY AREA	5280'+ W
PR	PUBLIC ROAD	±2724' S
AGU	ABOVE GROUND UTILITY	±2542' S
RR	RAILROAD	5280'+ NW
PL	PROPERTY LINE	±77' W
S	SCHOOL FACILITY	5280'+ NW
CC	CHILD CARE CENTER	5280'+ NW
DIC	DISPROPORTIONATELY IMPACTED COMMUNITY BOUNDARY	5280'+ W
MB	MUNICIPALITY BOUNDARY	±4615' N
CB	COUNTY BOUNDARY	5280'+ S
SW	SURFACE WATER	±291' E
PWS	PUBLIC WATER SYSTEM SUPPLY WELL	2640'+ E
HPH	HIGH PRIORITY HABITAT	5280'+ W
RHSD	RBU, HOB, OR SCHOOL FACILITY WITHIN A DI COMMUNITY	5280'+ SW

NOTE:
THIS MAP IS A COMPILATION OF PUBLICLY AVAILABLE DATA. THE ACCURACY AND COMPLETENESS OF SAID DATA HAS NOT BEEN VERIFIED BY 609 CONSULTING, LLC. EXISTING CONDITIONS MAY DIFFER FROM WHAT IS SHOWN.

Legend

- PROPOSED REFERENCE POINT

PROPOSED WORKING PAD SURFACE

BUFFER

BUILDING

NON-RESIDENTIAL BUILDING UNIT

RESIDENTIAL BUILDING UNIT

HEALTH FACILITY

SCHOOL FACILITY

CHILD CARE FACILITY

ABOVE GROUND UTILITY
- PUBLIC ROAD

RAILROAD

DITCH/CANAL/DRAINAGE/CREEK

DISPROPORTIONATELY IMPACTED COMMUNITY

PARCEL BOUNDARY

JURISDICTIONAL BOUNDARY

RULE 411.b 2640' BUFFER

100-YEAR FLOODWAY (EFFECTIVE)

100-YEAR FLOODPLAIN (EFFECTIVE)

NWI RIPARIAN CORRIDOR

NWI RIVERINE CORRIDOR
- NWI FRESHWATER EMERGENT WETLAND

NWI FRESHWATER FORESTED/SHRUB WETLAND

NWI LAKE

NWI FRESHWATER POND

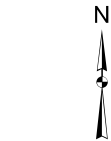
MANUFACTURED IRRIGATION POND

Kerr-McGee Oil & Gas Onshore LP
1099 18th Street
Denver, Colorado 80202



LOVELAND OFFICE
6706 North Franklin Avenue
Loveland, Colorado 80538
Phone 970-776-4331
SHERIDAN OFFICE
1095 Saberton Avenue
Sheridan, Wyoming 82801
Phone 307-674-0609

Drawn by: AK
Revised: AK
Date: 6 Sep 2024
Date: 12 Nov 2024



NAD83 CO-Nft
Scale: 1" = 750ft