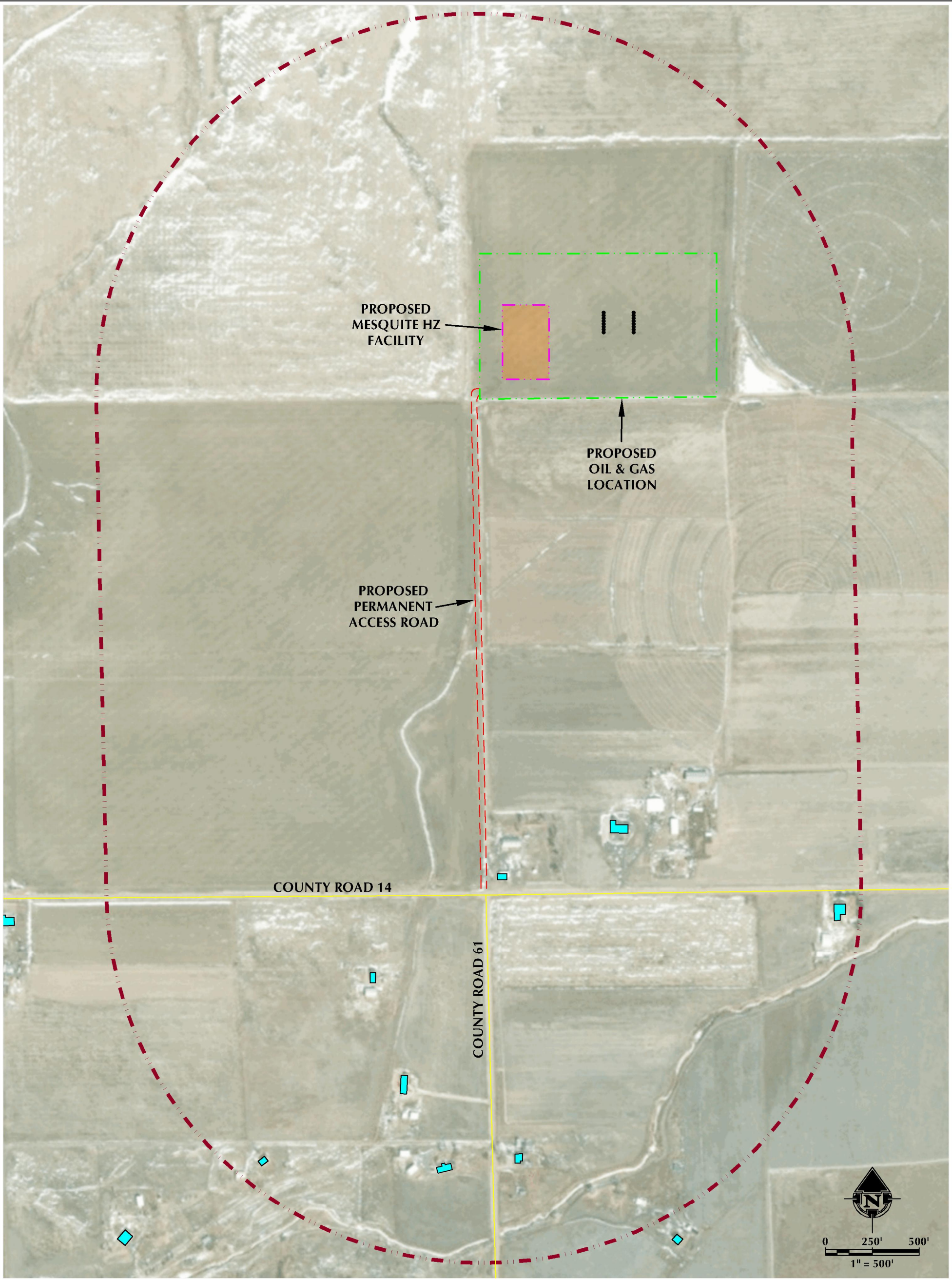


ACCESS MAP
MESQUITE HZ

SW1/4 NW1/4 SECTION 31, TOWNSHIP 2 NORTH, RANGE 63 WEST, 6TH P.M., WELD COUNTY, COLORADO



LEGEND

- PROPOSED WELL
- PROPOSED PERMANENT ACCESS ROAD
- PUBLIC ROAD
- PROPOSED OIL & GAS LOCATION
- 2000' ACCESS BUFFER
- RESIDENTIAL BUILDING UNIT
- NON-RESIDENTIAL BUILDING UNIT
- PROPOSED FACILITY PAD

**INTERSECTION OF
ACCESS ROAD AND CR 14**

LATITUDE: 40.087634°

LONGITUDE: -104.490129°



609 CONSULTING, LLC

LOVELAND OFFICE
6706 South Franklin Avenue
Loveland, Colorado 80538
Phone: 970-776-4331

SHERIDAN OFFICE
1095 Saberton Avenue
Sheridan, Wyoming 82801
Phone: 307-674-6069

DATE SURVEYED: 8/15/24
DATE: 9/6/24
DRAFTER: JAC
REVISED:

DATA SOURCES & NOTES:
- AERIAL COURTESY OF ESRI, INC.

PREPARED FOR:
Kerr-McGee Oil & Gas Onshore LP