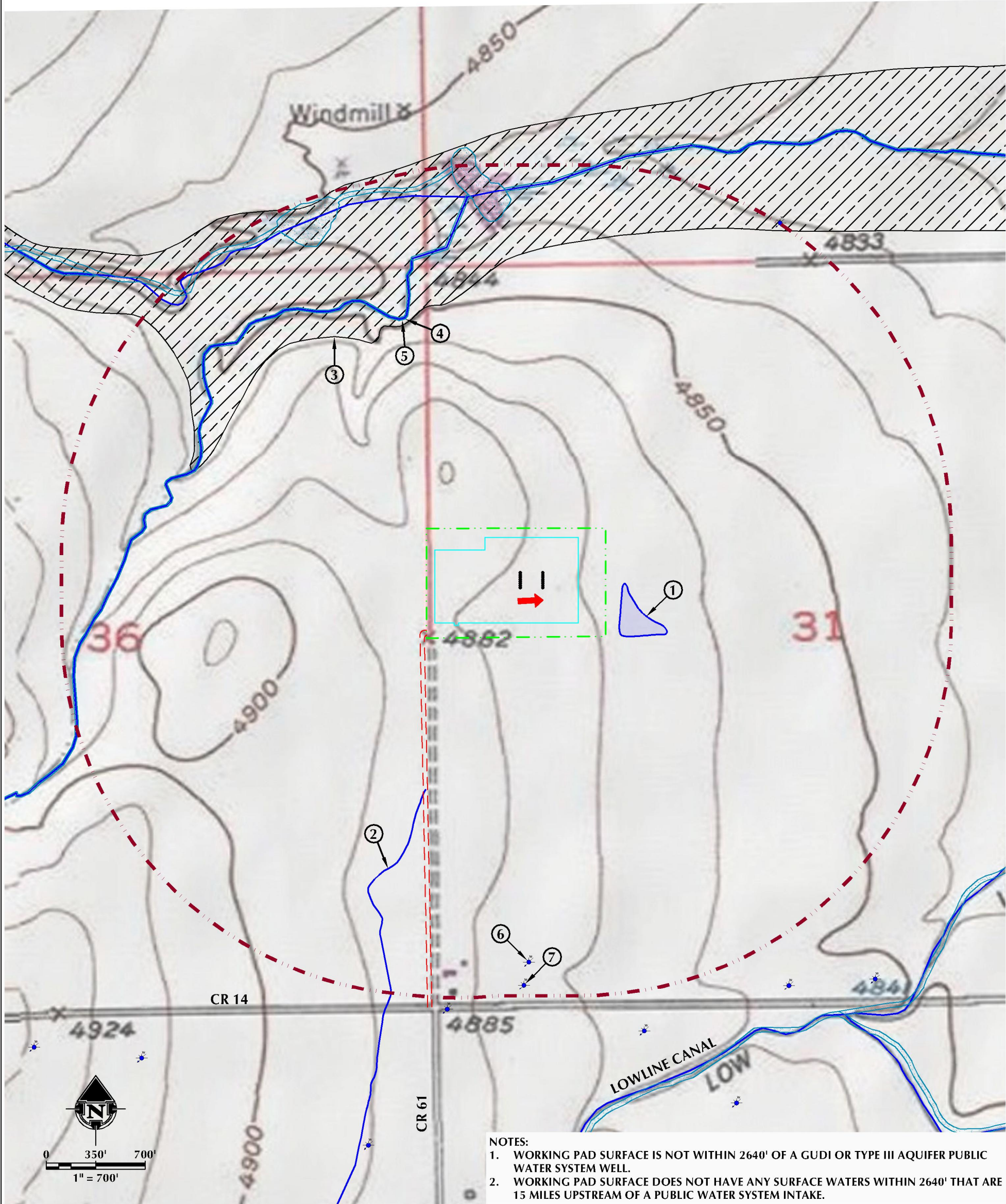


HYDROLOGY MAP
MESQUITE HZ

HORIZONTAL MULTI-WELL PAD

SW1/4 NW1/4 SECTION 31, TOWNSHIP 2 NORTH, RANGE 63 WEST, 6TH P.M., WELD COUNTY, COLORADO



- NOTES:
1. WORKING PAD SURFACE IS NOT WITHIN 2640' OF A GUDI OR TYPE III AQUIFER PUBLIC WATER SYSTEM WELL.
 2. WORKING PAD SURFACE DOES NOT HAVE ANY SURFACE WATERS WITHIN 2640' THAT ARE 15 MILES UPSTREAM OF A PUBLIC WATER SYSTEM INTAKE.

1. POND IS ±291' E.
2. DITCH IS ±1183' S.
3. 100-YEAR FLOODPLAIN (EFFECTIVE) IS ±1533' N.
4. NWI RIVERINE/POND/WETLAND AREAS ARE ±1644' N, ±2027' N, ±2239' N, ±2306' N AND ±2450' N.
5. NHD FLOWLINES ARE ±1654' N AND ±2413' N.
6. EXISTING WATER WELL (PERMIT #248318, WELL CONSTRUCTED) IS ±2398' S.
7. EXISTING WATER WELL (PERMIT #312431-A, WELL CONSTRUCTED) IS ±2563' S.

- LEGEND
- PROPOSED WELL
 - WATER WELL
 - PROPOSED ACCESS ROAD
 - DITCH/CANAL/DRAINAGE
 - DOWNGRADIENT
 - 2640' WORKING PAD SURFACE BUFFER
 - PROPOSED OIL & GAS LOCATION
 - WORKING PAD SURFACE
 - 100-YEAR FLOODPLAIN (EFFECTIVE)
 - NWI RIVERINE/POND/WETLAND
 - NWI RIPARIAN AREA

ALL MEASUREMENTS ARE MADE
FROM NEAREST EDGE OF THE
WORKING PAD SURFACE



LOVELAND OFFICE
6706 South Franklin Avenue
Loveland, Colorado 80538
Phone: 970-776-1331

SHERIDAN OFFICE
1095 Saberton Avenue
Sheridan, Wyoming 82801
Phone: 307-674-6069

DATE SURVEYED: 8/15/24
DATE: 9/6/24
DRAFTER: JAC
REVISED:

DATA SOURCES & NOTES:

- TOPOGRAPHIC MAP IS COURTESY OF USGS.
- WATER WELLS COURTESY OF COLORADO DIVISION OF WATER RESOURCES.
- MANY FEATURES ON THIS MAP COME FROM PUBLICLY AVAILABLE DATA AND SURFACE WATER LYING OUTSIDE THE SURFACE PROPERTY MAY HAVE BEEN OBTAINED FROM AERIAL IMAGERY. THE ACCURACY AND COMPLETENESS OF SAID DATA HAS NOT BEEN VERIFIED BY 609 CONSULTING, LLC. EXISTING CONDITIONS MAY DIFFER FROM WHAT IS SHOWN.

PREPARED FOR:
Kerr-McGee Oil & Gas Onshore LP