

FACILITY PAD LOCATION PICTURES
MESQUITE HZ

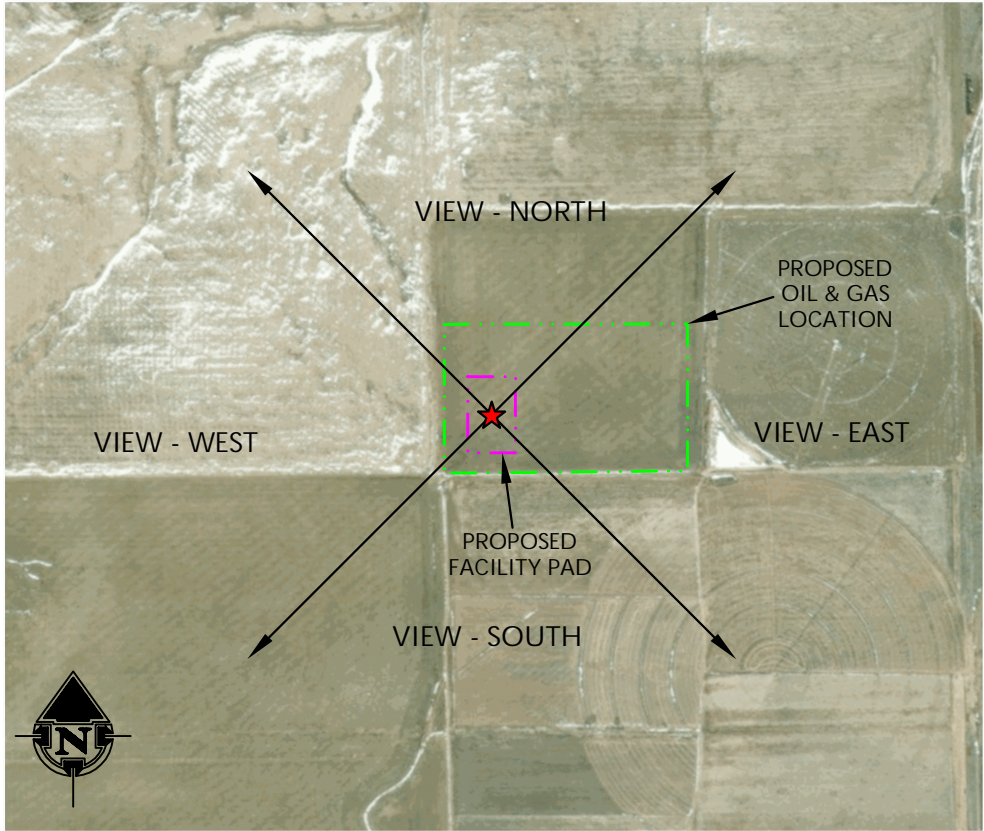
SW1/4 NW1/4 SECTION 31, TOWNSHIP 2 NORTH, RANGE 63 WEST, 6TH P.M., WELD COUNTY, COLORADO



LOCATION PICTURE OF MESQUITE HZ FACILITY PAD - CAMERA VIEW NORTH



LOCATION PICTURE OF MESQUITE HZ FACILITY PAD - CAMERA VIEW SOUTH



VIEW - OVERHEAD
AERIAL IMAGERY COURTESY OF ESRI, INC.



LOCATION PICTURE OF MESQUITE HZ FACILITY PAD - CAMERA VIEW EAST



LOCATION PICTURE OF MESQUITE HZ FACILITY PAD - CAMERA VIEW WEST

K:\ANADARKO\2023\2023_50_MESQUITE_T2N_R63W_SEC_31DWG\MESQUITE_T2N_R63W_SEC_31.dwg, 9/3/2024 9:43:32 AM, Phase



LOVELAND OFFICE
6706 North Franklin Avenue
Loveland, Colorado 80538
Phone 970-776-4331

SHERIDAN OFFICE
1095 Saberton Avenue
Sheridan, Wyoming 82801
Phone 307-674-0609

CONSULTING, LLC

Kerr-McGee Oil &
Gas Onshore LP

1099 18th Street
Denver, Colorado 80202

DATE SURVEYED: 8/15/24
DATE: 9/6/24
DRAFTER: JAC
REVISED:

DATA SOURCES:
-AERIAL IMAGERY COURTESY OF ESRI, INC.