

Inspection/Audit Photos

Location Name: TEP Rocky Mountain Jolley Frac Pad KP 32-17

Location # 323844



Apr 16, 2025 at 10:23:42 AM
CO



Apr 16, 2025 at 10:23:54 AM
CO

Photo # 1451 From entrance to location

Photo # 1452 Location

Inspection/Audit Photos

Location Name: TEP Rocky Mountain Jolley Frac Pad KP 32-17

Location # 323844



Photo # 1453 Location



Photo # 1454 Location

Inspection/Audit Photos

Location Name: TEP Rocky Mountain Jolley Frac Pad KP 32-17

Location # 323844



Photo # 1455 Location



Photo # 1456 Location

Inspection/Audit Photos

Location Name: TEP Rocky Mountain Jolley Frac Pad KP 32-17

Location # 323844



Photo # 1457 Location



Photo # 1458 Location

Inspection/Audit Photos

Location Name: TEP Rocky Mountain Jolley Frac Pad KP 32-17

Location # 323844



Photo # 1459 Location



Photo # 1460 Location

Inspection/Audit Photos

Location Name: TEP Rocky Mountain Jolley Frac Pad KP 32-17

Location # 323844



Photo # 1461 Location



Photo # 1462 Location

Inspection/Audit Photos

Location Name: TEP Rocky Mountain Jolley Frac Pad KP 32-17

Location # 323844

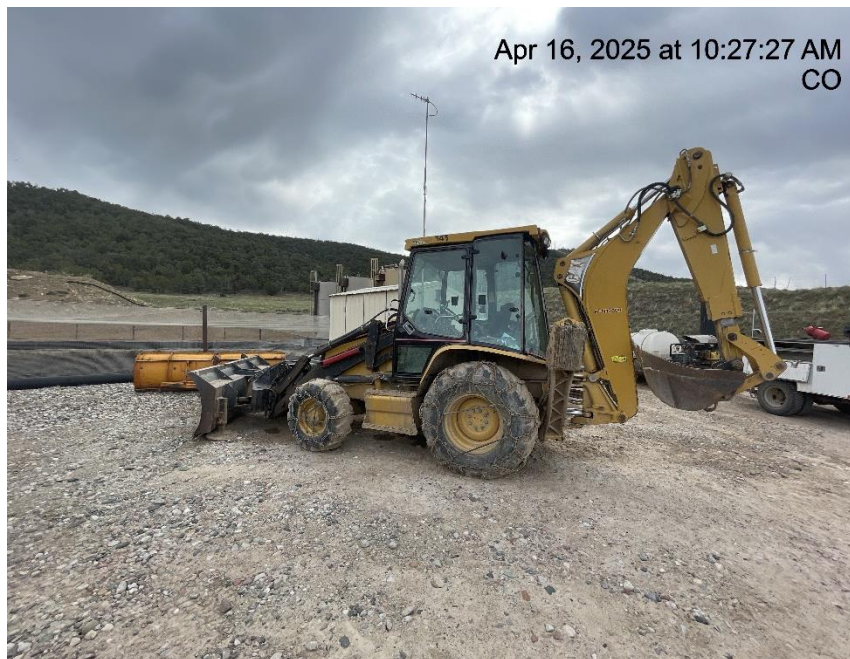


Photo # 1463 Location



Photo # 1464 Location

Inspection/Audit Photos

Location Name: TEP Rocky Mountain Jolley Frac Pad KP 32-17

Location # 323844

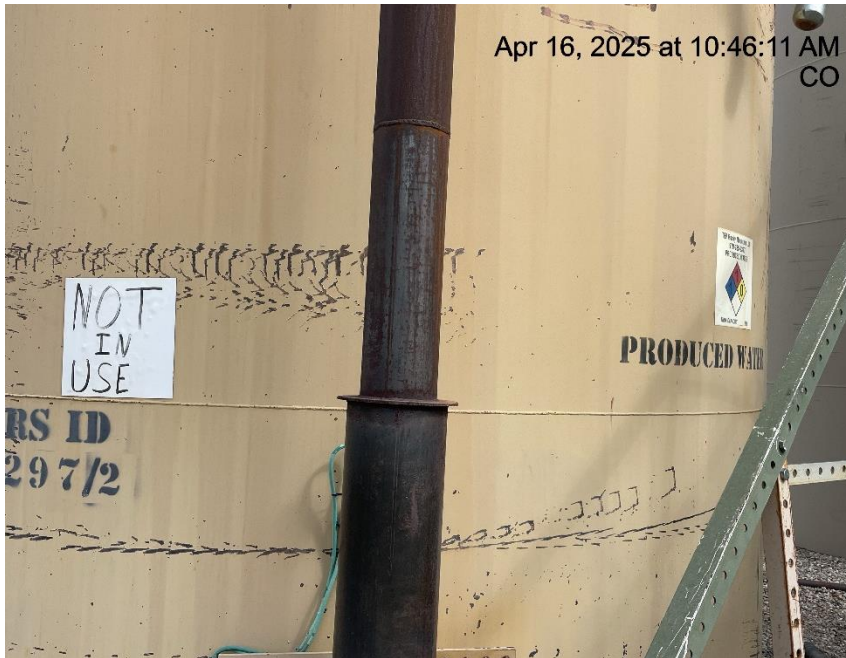


Photo # 1465 Tank disconnected & not in use/unused equipment



Photo # 1466 Tank disconnected & not in use/unused equipment



Inspection/Audit Photos

Location Name: TEP Rocky Mountain Jolley Frac Pad KP 32-17

Location # 323844



Photo # 1467 Open manway on unused tank/wildlife hazard/available for entry by wildlife



Photo # 1468 Open manway on unused tank/wildlife hazard/available for entry by wildlife

Inspection/Audit Photos

Location Name: TEP Rocky Mountain Jolley Frac Pad KP 32-17

Location # 323844



Photo # 1469 Open ended pipe/load lines on unused tank/wildlife hazard/available for entry by wildlife



Photo # 1470 Open ended pipe/load lines on unused tank/wildlife hazard/available for entry by wildlife

Inspection/Audit Photos

Location Name: TEP Rocky Mountain Jolley Frac Pad KP 32-17

Location # 323844



Photo # 1471 Open ended port on unused tank/wildlife hazard/available for entry by wildlife



Photo # 1472 Open ended piping on unused tank/wildlife hazard/available for entry by wildlife

Inspection/Audit Photos

Location Name: TEP Rocky Mountain Jolley Frac Pad KP 32-17

Location # 323844



Photo # 1773 Open ended piping on unused tank/wildlife hazard/available for entry by wildlife



Photo # 1474 Open ended piping on unused tank/wildlife hazard/available for entry by wildlife

Inspection/Audit Photos

Location Name: TEP Rocky Mountain Jolley Frac Pad KP 32-17

Location # 323844



Photo # 1475 Open ended load line



Photo # 1476 Open ended load line

Inspection/Audit Photos

Location Name: TEP Rocky Mountain Jolley Frac Pad KP 32-17

Location # 323844



Photo # 1477 Open ended load lines



Photo # 1478 Staining in secondary containment

Inspection/Audit Photos

Location Name: TEP Rocky Mountain Jolley Frac Pad KP 32-17

Location # 323844



Photo # 1479 Staining in secondary containment

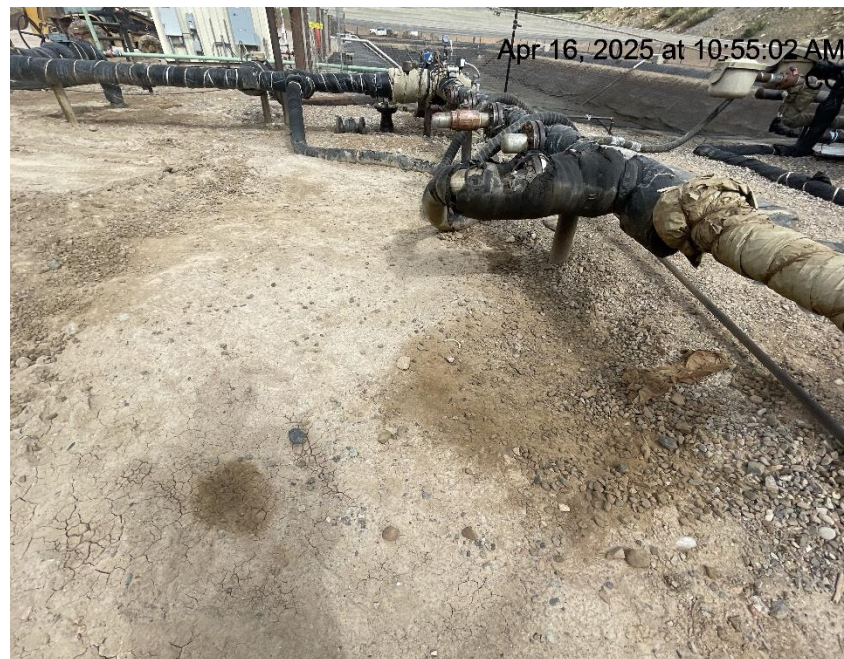


Photo # 1480 Stained soils on location

Inspection/Audit Photos

Location Name: TEP Rocky Mountain Jolley Frac Pad KP 32-17

Location # 323844



Photo # 1481 Stained soils on location



Photo # 1482 E & P waste in plastic tub/wildlife hazard & not in compliance with CECMC environmental rules

Inspection/Audit Photos

Location Name: TEP Rocky Mountain Jolley Frac Pad KP 32-17

Location # 323844



Photo # 1483 Unused riser line lacks lockout tagout (OOSLAT)



Photo # 1484 Unused riser line lacks lockout tagout (OOSLAT)

Inspection/Audit Photos

Location Name: TEP Rocky Mountain Jolley Frac Pad KP 32-17

Location # 323844



Photo # 1485 PRV vent line does not comply with CECMC pressure safety device rules