



1/18/2025

Mr. Drew Stormo  
STORMWATER & RECLAMATION ADVISOR – HSE ROCKIES  
Kerr-McGee Oil & Gas Onshore LP  
501 N Division Blvd. Platteville, Colorado 80651

**Re: Colorado Energy & Carbon Management Commission (ECMC)  
Vegetation Assessment Report (Interim Reclamation Completion Notice)  
BADDING 35N-2HZ (319049)  
Kerr-McGee Oil & Gas Onshore LP (Operator: 47120)**

Dear Mr. Stormo,

Apex Companies, LLC (Apex) is presenting this letter to Kerr-McGee Oil & Gas Onshore LP (Kerr-McGee) documenting the results of a vegetation assessment that demonstrates successful completion of interim reclamation efforts, per ECMC Rule 1003, on the above-referenced location in Weld County, Colorado. Attached is a topographic location map and vegetation survey site map with additional location information.

Based on site visits and the completed vegetation assessment, Apex inspectors confirmed that the unused portions of the reduced production footprint have been stabilized. The client seeded the disturbed area with a mixture consistent with species composition and reseeding practices common to the area.

On September 19th, 2024, modified step-point vegetation surveys were conducted on the reclaimed portion of the well pad and on the adjacent reference areas. Foliar and basal cover, along with non-vegetated and noxious weed occurrences, were documented; 100 survey points were recorded within the reclaimed disturbance and 100 survey points were recorded within the reference area. Vegetation survey points were identified using a bullseye target tool. The survey methodology employed by Apex is based on the *step-point method* described in an interagency technical reference published by the Bureau of Land Management (BLM, 1996).

Noxious weeds listed by the Colorado Department of Agriculture were excluded from the percent of reference vegetative coverage calculations, per ECMC Rule 1003.e (2). Disturbed areas have been kept as free of all noxious weeds as practicable, per ECMC Rule 1003.f. Cheatgrass and field bindweed are the only noxious weeds present. These list C weeds are much more prevalent in the reference area. To ensure reclamation vegetative composition meets the standards of Kerr-McGee Oil & Gas Onshore LP (Kerr-McGee) and the ECMC, undesirable cover is also quantified in the attached Summary of Field Data. Undesirable cover includes species identified by the United States Department of Agriculture (USDA) Natural Resource Conservation Service (NRCS) as introduced and not native to the lower 48 states, and not considered beneficial for reclamation purposes.

Survey results indicate the reclaimed area has a foliar vegetative cover that is 159.3% of the reference area. Vegetation survey results are provided in the attached survey summary table and data sheets. Based on the results of the survey, interim reclamation, as defined by ECMC Rule 1003.e

(2), has been achieved. Photographs required by ECMC Rule 1003.e (3) are also attached along with the site map illustrating vegetation survey photo points and transect locations.

Apex appreciates the opportunity to provide environmental consulting services on this project. Should you have any questions or require additional information, please do not hesitate to contact me.

Sincerely,  
Apex Companies, LLC



Megan Pierson  
Scientist 2  
[megan.pierson@apexcoss.com](mailto:megan.pierson@apexcoss.com)  
402-218-7723



Mike Wirth  
Project Manager  
[mike.wirth@apexcoss.com](mailto:mike.wirth@apexcoss.com)  
(610) 217-9064

**Attachments:**

1. Vegetation Survey - Summary of Field Data
2. Topographic Location Map
3. Vegetation Survey Site Map
4. Vegetation Assessment Photo Log
5. Vegetation Survey (Field Data Tables)

**Reference:**

United States (U.S.) Department of Agriculture (USDA), Forest Service (USFS), Natural Resource Conservation Service (NRCS) and U.S. Department of the Interior (USDOI) Bureau of Land Management (BLM). "Sampling Vegetation Attributes, Interagency Technical Reference, 1996 (Revised in 1997, and 1999)". USDOI BLM Technical References #1734-4.

<https://www.blm.gov/noc/blm-library/technical-reference/sampling-vegetation-attributes>

Date Accessed: 18 July, 2024

## Vegetation Survey - Summary of Field Data

<b>Client</b>	KERR MCGEE OIL & GAS ONSHORE LP
<b>ECMC Location Name (ID)</b>	BADDING 35N-2HZ (319049)
<b>Assessment Date</b>	9/19/2024
<b>Inspector Name</b>	Erik Garcia

Based on the survey methodology, the foliar cover (%) in each survey area is calculated by summing the total number of foliar occurrences, excluding noxious weeds, and dividing by the total occurrences in the transects. For this location:

<b>Reclaim Area (Foliar Cover)</b>	<b>Reference Area (Foliar Cover)</b>
$(25 + 38 + 2) / 197 = \mathbf{33.0\%}$	$(22 + 16 + 3) / 198 = \mathbf{20.7\%}$

For the purposes of this assessment, the undesirable foliar cover (%) is calculated by summing the total number of undesirable\* foliar occurrences and dividing by the total occurrences in the transects, excluding noxious weeds. For this location:

<b>Reclaim Area (Undesirable Foliar Cover)</b>	<b>Reference Area (Undesirable Foliar Cover)</b>
$15 / (25 + 38 + 2 + 15) = \mathbf{18.8\%}$	$13 / (22 + 16 + 3 + 13) = \mathbf{24.1\%}$

The percent of reference used to evaluate the reclamation area for compliance with ECMC Rule 1003.e(2) is calculated by dividing the foliar cover (%) in the reclaim area by the foliar cover (%) in the reference area. For this location:

<b>Percent of Reference (Reclaim % / Reference %)</b>
$33.0\% / 20.7\% = \mathbf{159.3\%}$

### Reclaim Area Vegetation

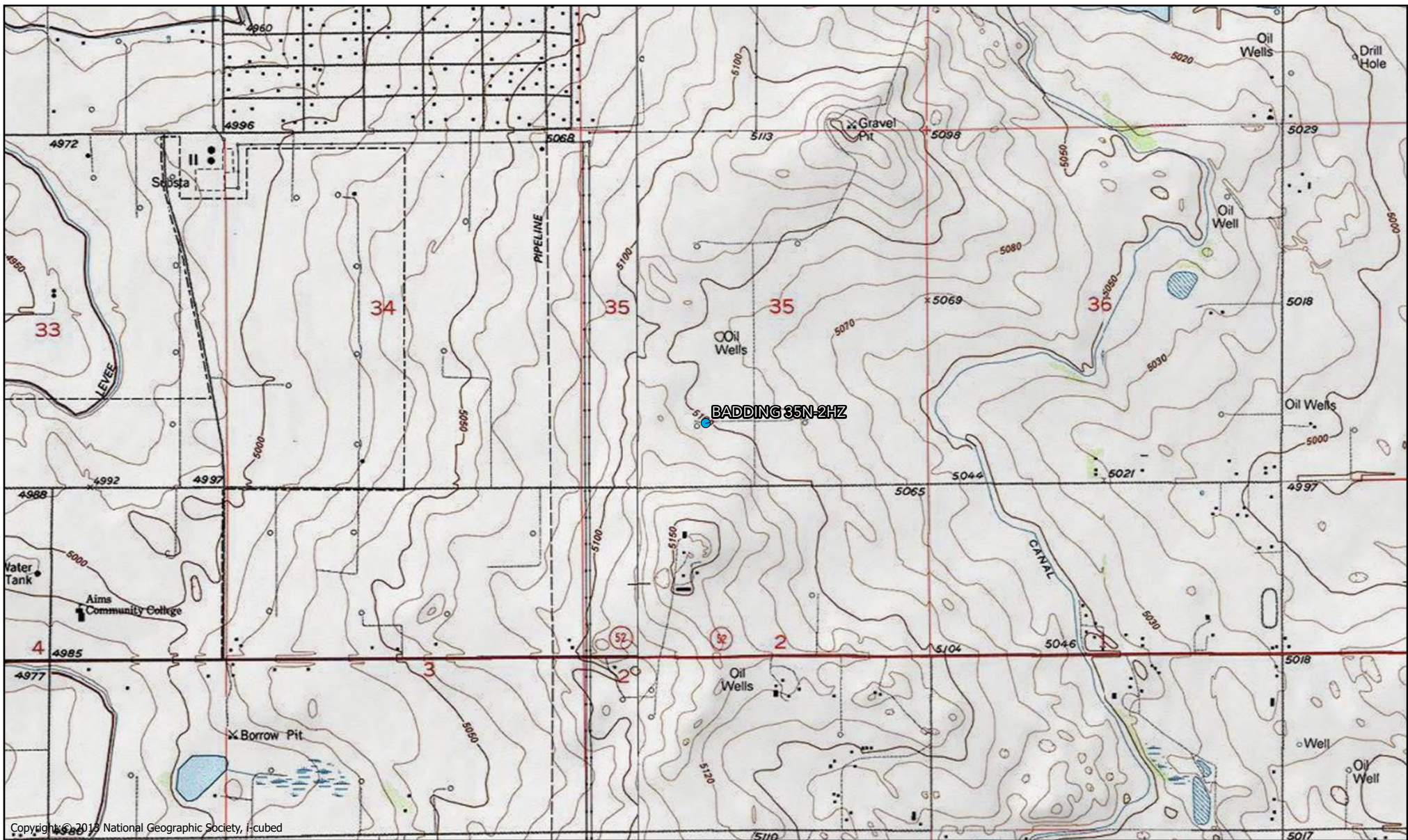
Desirable Foliar Cover	33.0%
Desirable Basal Cover	13.2%
Non Vegetated	28.4%
Noxious Weeds Cover	14.2%
Undesirable Cover	11.2%
<b>Quality Assurance Total</b> <i>(must equal 100)</i>	<b>100.0%</b>
Grass (Foliar)	25
Forb (Foliar)	38
Shrubs (Foliar)	2
Noxious Weed (Foliar)	17
Undesirable (Foliar)	15
Grass (Basal)	9
Forb (Basal)	16
Shrubs (Basal)	1
Noxious Weed (Basal)	11
Undesirable (Basal)	7
Bare Ground	0
Litter	56
Rock	0
<b>Total Occurrences</b>	<b>197</b>

### Reference Area Vegetation

Desirable Foliar Cover	20.7%
Desirable Basal Cover	5.1%
Non Vegetated	34.8%
Noxious Weeds Cover	29.3%
Undesirable Cover	10.1%
<b>Quality Assurance Total</b> <i>(must equal 100)</i>	<b>100.0%</b>
Grass (Foliar)	22
Forb (Foliar)	16
Shrubs (Foliar)	3
Noxious Weed (Foliar)	44
Undesirable (Foliar)	13
Grass (Basal)	4
Forb (Basal)	4
Shrubs (Basal)	2
Noxious Weed (Basal)	14
Undesirable (Basal)	7
Bare Ground	7
Litter	62
Rock	0
<b>Total Occurrences</b>	<b>198</b>

\* Identified as introduced and non-native to Colorado by the United States Department of Agriculture Natural Resources Conservation Service.





### Legend

- Location



0 1,000 2,000  
Feet  
1:24,000

Topographic Map

BADDING 35N-2HZ  
(319049)

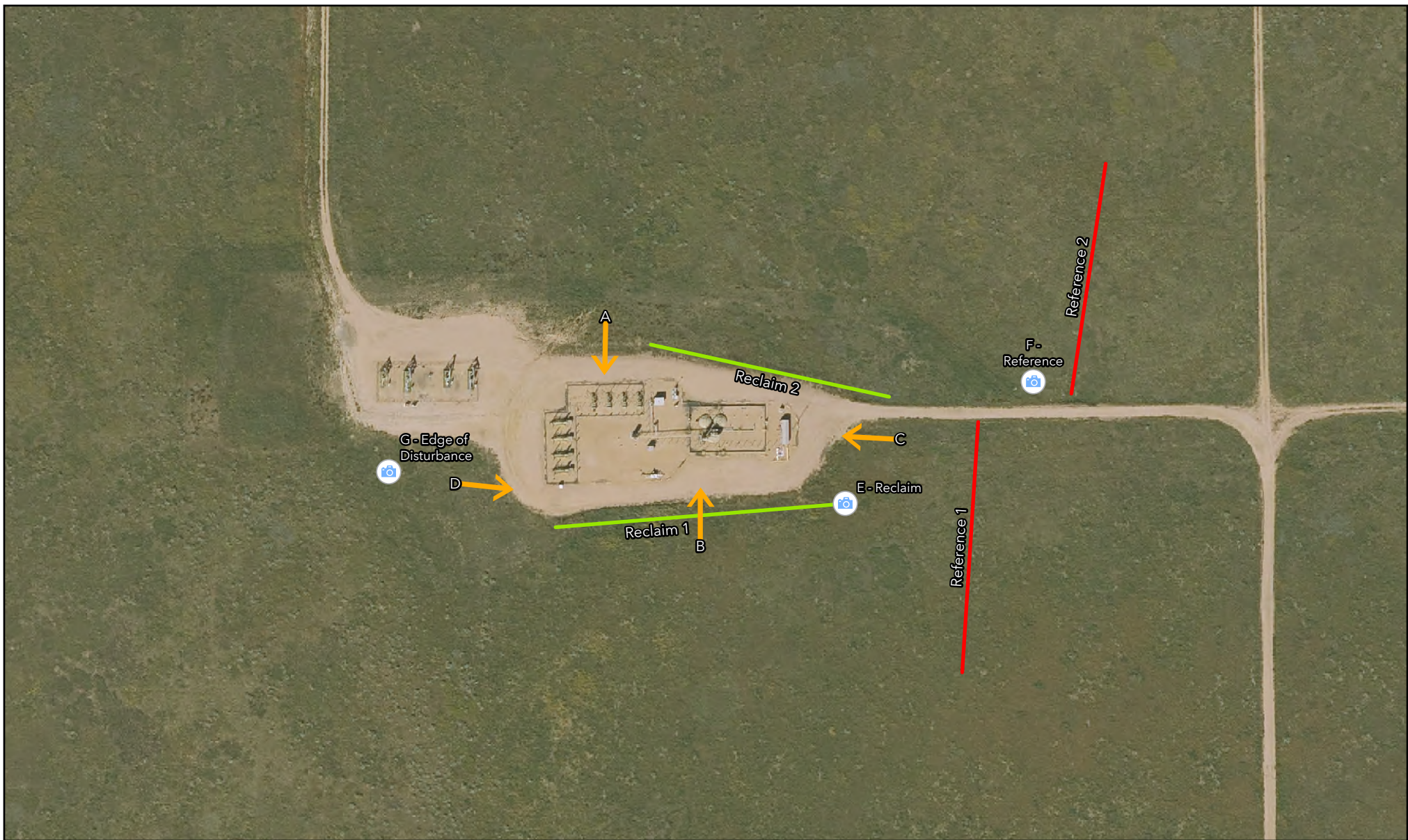


Legal Description: SESE Sec 26 T2N R66W  
Lat/Long: 40.103004,-104.737199  
County: Weld







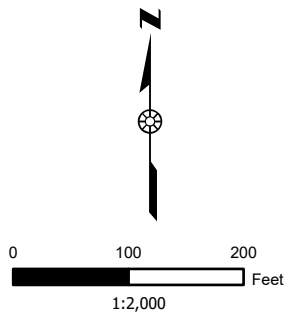
NAD 1983 2011 UTM Zone 13N  
By: Mike.Wirth  
Date Saved: 1/13/2025





### Legend

-  Photos
-  Reclaim Transect
-  Reference Transect
-  Cardinal Direction Photos



### Vegetation Survey Map

BADDING 35N-2HZ  
(319049)



Legal Description: SESE Sec 26 T2N R66W  
Lat/Long: 40.103004,-104.737199  
County: Weld  
Land Use: Non-Cropland  
Reclaim Area Foliar Cover: 33.0%  
Reference Area Foliar Cover: 20.7%  
Cover Ratio (Reclaim/Reference): 159.3%  
Inspector: Erik Garcia  
Assessment Date: 9/19/2024  
Aerial Imagery Date: 2023



NAD 1983 2011 UTM Zone 13N  
By: Mike.Wirth  
Date Saved: 1/16/2025



# Vegetation Assessment Photo Log

Date Completed – 09/19/2024

Operator - KERR MCGEE OIL & GAS ONSHORE LP

Location Name (ID) – BADDING 35N-2HZ (319049)



Edge of disturbance - Photo Point G



North of disturbance (facing south) - Photo Point A



South of disturbance (facing north) - Photo Point B



East of disturbance (facing west) - Photo Point C



## Vegetation Assessment Photo Log

Date Completed – 09/19/2024

Operator - KERR MCGEE OIL & GAS ONSHORE LP

Location Name (ID) – BADDING 35N-2HZ (319049)



West of disturbance (facing east) - Photo Point D



Interim Reclaim - Photo Point E



Reference - Photo Point F



Reclaim Transect 1 - Photo Point H



## Vegetation Assessment Photo Log

Date Completed – 09/19/2024

Operator - KERR MCGEE OIL & GAS ONSHORE LP

Location Name (ID) – BADDING 35N-2HZ (319049)

DIRECTION  
74 deg(T)

40.09019°N  
104.74702°W

ACCURACY 3 m  
DATUM WGS84



Reclaim Transect 2 - Photo Point I

DIRECTION  
185 deg(T)

40.08995°N  
104.74554°W

ACCURACY 5 m  
DATUM WGS84



Reference Transect 1 - Photo Point J

DIRECTION  
13 deg(T)

40.08998°N  
104.74520°W

ACCURACY 2 m  
DATUM WGS84



Reference Transect 2 - Photo Point K



# Vegetation Survey (Field Data Table)

Client: KERR MCGEE OIL & GAS ONSHORE LP  
 ECMC Location Name (ID): BADDING 35N-2HZ (319049)  
 Transect ID: Reclaim Transect 1 (Photo Point H)  
 Transect Length: 402 ft.  
 Assessment Date: 9/19/2024  
 Inspector: Erik Garcia

Point	Foliar	Species	Basal	Species
1	Forb	<i>Ambrosia psilostachya</i>	Non Vegetative	Litter
2	Shrub	<i>Artemisia filifolia</i>	Non Vegetative	Litter
3	Forb	<i>Ambrosia psilostachya</i>	Non Vegetative	Litter
4	Noxious Weed C	<i>Bromus tectorum</i>	Forb	<i>Ambrosia psilostachya</i>
5	Forb	<i>Verbena bracteata</i>	Non Vegetative	Litter
6	Forb	<i>Ambrosia psilostachya</i>	Non Vegetative	Litter
7	Forb	<i>Cleome serrulata</i>	Non Vegetative	Litter
8	Noxious Weed C	<i>Bromus tectorum</i>	Undesirable	<i>Salsola L.</i>
9	Noxious Weed C	<i>Bromus tectorum</i>	Forb	<i>Ambrosia psilostachya</i>
10	Undesirable	<i>Salsola L.</i>	Forb	<i>Ambrosia psilostachya</i>
11	Undesirable	<i>Salsola L.</i>	Non Vegetative	Litter
12	Noxious Weed C	<i>Bromus tectorum</i>	Grass	<i>Panicum virgatum</i>
13	Forb	<i>Helianthus petiolaris</i>	Non Vegetative	Litter
14	Noxious Weed C	<i>Bromus tectorum</i>	Non Vegetative	Litter
15	Noxious Weed C	<i>Bromus tectorum</i>	Forb	<i>Ambrosia psilostachya</i>
16	Grass	<i>Panicum virgatum</i>	Non Vegetative	Litter
17	Noxious Weed C	<i>Bromus tectorum</i>	Forb	<i>Ambrosia psilostachya</i>
18	Noxious Weed C	<i>Bromus tectorum</i>	Non Vegetative	Litter
19	Forb	<i>Ambrosia psilostachya</i>	Non Vegetative	Litter
20	Undesirable	<i>Kochia scoparia</i>	Forb	<i>Ambrosia psilostachya</i>
21	Forb	<i>Ambrosia psilostachya</i>	Non Vegetative	Litter
22	Grass	<i>Bouteloua gracilis</i>	Forb	<i>Ambrosia psilostachya</i>
23	Forb	<i>Ambrosia psilostachya</i>	Non Vegetative	Litter
24	Shrub	<i>Artemisia filifolia</i>	Shrub	<i>Artemisia filifolia</i>
25	Forb	<i>Argemone polyanthemos</i>	Noxious Weed C	<i>Bromus tectorum</i>
26	Undesirable	<i>Kochia scoparia</i>	Non Vegetative	Litter
27	Forb	<i>Ambrosia psilostachya</i>	Grass	<i>Panicum virgatum</i>
28	Forb	<i>Ambrosia psilostachya</i>	Non Vegetative	Litter
29	N/A	N/A	Non Vegetative	Litter
30	Forb	<i>Argemone polyanthemos</i>	Non Vegetative	Litter
31	Forb	<i>Ambrosia psilostachya</i>	Non Vegetative	Litter
32	Noxious Weed C	<i>Bromus tectorum</i>	Non Vegetative	Litter
33	Noxious Weed C	<i>Bromus tectorum</i>	Non Vegetative	Litter
34	Noxious Weed C	<i>Bromus tectorum</i>	Non Vegetative	Litter
35	Forb	<i>Verbena bracteata</i>	Non Vegetative	Litter
36	N/A	N/A	Non Vegetative	Litter
37	Noxious Weed C	<i>Bromus tectorum</i>	Non Vegetative	Litter
38	Noxious Weed C	<i>Bromus tectorum</i>	Non Vegetative	Litter
39	Noxious Weed C	<i>Bromus tectorum</i>	Non Vegetative	Litter
40	Noxious Weed C	<i>Bromus tectorum</i>	Non Vegetative	Litter
41	Forb	<i>Helianthus petiolaris</i>	Undesirable	<i>Kochia scoparia</i>
42	Forb	<i>Helianthus petiolaris</i>	Non Vegetative	Litter
43	Undesirable	<i>Kochia scoparia</i>	Non Vegetative	Litter
44	Undesirable	<i>Kochia scoparia</i>	Non Vegetative	Litter
45	Undesirable	<i>Kochia scoparia</i>	Noxious Weed C	<i>Convolvulus arvensis</i>
46	Undesirable	<i>Kochia scoparia</i>	Non Vegetative	Litter
47	Forb	<i>Argemone polyanthemos</i>	Undesirable	<i>Kochia scoparia</i>
48	Grass	<i>Bouteloua curtipendula</i>	Non Vegetative	Litter
49	Undesirable	<i>Eragrostis cilianensis</i>	Non Vegetative	Litter
50	Forb	<i>Verbena bracteata</i>	Non Vegetative	Litter



# Vegetation Survey (Field Data Table)

Client: KERR MCGEE OIL & GAS ONSHORE LP  
 ECMC Location Name (ID): BADDING 35N-2HZ (319049)  
 Transect ID: Reclaim Transect 2 (Photo Point I)  
 Transect Length: 316 ft.  
 Assessment Date: 9/19/2024  
 Inspector: Erik Garcia

Point	Foliar	Species	Basal	Species
1	Undesirable	<i>Kochia scoparia</i>	Non Vegetative	Litter
2	Grass	<i>Calamovilfa longifolia</i>	Non Vegetative	Litter
3	Forb	<i>Mentzelia nuda</i>	Grass	<i>Bouteloua gracilis</i>
4	Grass	<i>Calamovilfa longifolia</i>	Grass	<i>Bouteloua gracilis</i>
5	Forb	<i>Grindelia squarrosa</i>	Non Vegetative	Litter
6	Forb	<i>Grindelia squarrosa</i>	Non Vegetative	Litter
7	Forb	<i>Ambrosia psilostachya</i>	Noxious Weed C	<i>Convolvulus arvensis</i>
8	Grass	<i>Bouteloua gracilis</i>	Grass	<i>Bouteloua gracilis</i>
9	Forb	<i>Ambrosia psilostachya</i>	Grass	<i>Bouteloua gracilis</i>
10	Forb	<i>Grindelia squarrosa</i>	Forb	<i>Ambrosia psilostachya</i>
11	Forb	<i>Grindelia squarrosa</i>	Grass	<i>Bouteloua gracilis</i>
12	Forb	<i>Grindelia squarrosa</i>	Forb	<i>Ambrosia psilostachya</i>
13	Noxious Weed C	<i>Bromus tectorum</i>	Non Vegetative	Litter
14	Grass	<i>Calamovilfa longifolia</i>	Noxious Weed C	<i>Convolvulus arvensis</i>
15	Grass	<i>Calamovilfa longifolia</i>	Noxious Weed C	<i>Convolvulus arvensis</i>
16	Grass	<i>Calamovilfa longifolia</i>	Noxious Weed C	<i>Convolvulus arvensis</i>
17	Grass	<i>Calamovilfa longifolia</i>	Noxious Weed C	<i>Convolvulus arvensis</i>
18	Grass	<i>Calamovilfa longifolia</i>	Non Vegetative	Litter
19	Grass	<i>Calamovilfa longifolia</i>	Forb	<i>Verbena bracteata</i>
20	Grass	<i>Calamovilfa longifolia</i>	Non Vegetative	Litter
21	Forb	<i>Medicago sativa</i>	Noxious Weed C	<i>Bromus tectorum</i>
22	Forb	<i>Verbena bracteata</i>	Non Vegetative	Litter
23	Forb	<i>Grindelia squarrosa</i>	Non Vegetative	Litter
24	Forb	<i>Euphorbia davidii</i>	Non Vegetative	Litter
25	Grass	<i>Calamovilfa longifolia</i>	Forb	<i>Verbena bracteata</i>
26	Grass	<i>Calamovilfa longifolia</i>	Non Vegetative	Litter
27	Undesirable	<i>Kochia scoparia</i>	Noxious Weed C	<i>Convolvulus arvensis</i>
28	Grass	<i>Calamovilfa longifolia</i>	Noxious Weed C	<i>Bromus tectorum</i>
29	Grass	<i>Calamovilfa longifolia</i>	Non Vegetative	Litter
30	Grass	<i>Bouteloua curtipendula</i>	Forb	<i>Physalis virginiana</i>
31	Forb	<i>Physalis virginiana</i>	Non Vegetative	Litter
32	Grass	<i>Calamovilfa longifolia</i>	Forb	<i>Physalis virginiana</i>
33	Grass	<i>Calamovilfa longifolia</i>	Forb	<i>Physalis virginiana</i>
34	Grass	<i>Calamovilfa longifolia</i>	Grass	<i>Calamovilfa longifolia</i>
35	Forb	<i>Physalis virginiana</i>	Non Vegetative	Litter
36	Noxious Weed C	<i>Bromus tectorum</i>	Forb	<i>Physalis virginiana</i>
37	Forb	<i>Physalis virginiana</i>	Non Vegetative	Litter
38	Forb	<i>Ambrosia psilostachya</i>	Non Vegetative	Litter
39	N/A	N/A	Non Vegetative	Litter
40	Undesirable	<i>Kochia scoparia</i>	Non Vegetative	Litter
41	Grass	<i>Calamovilfa longifolia</i>	Undesirable	<i>Kochia scoparia</i>
42	Undesirable	<i>Kochia scoparia</i>	Noxious Weed C	<i>Bromus tectorum</i>
43	Forb	<i>Croton texensis</i>	Non Vegetative	Litter
44	Forb	<i>Croton texensis</i>	Grass	<i>Panicum virgatum</i>
45	Grass	<i>Calamovilfa longifolia</i>	Non Vegetative	Litter
46	Undesirable	<i>Kochia scoparia</i>	Undesirable	<i>Kochia scoparia</i>
47	Forb	<i>Croton texensis</i>	Non Vegetative	Litter
48	Grass	<i>Calamovilfa longifolia</i>	Forb	<i>Croton texensis</i>
49	Undesirable	<i>Hypochaeris radicata</i>	Undesirable	<i>Kochia scoparia</i>
50	Grass	<i>Calamovilfa longifolia</i>	Undesirable	<i>Salsola L.</i>



# Vegetation Survey (Field Data Table)

Client: KERR MCGEE OIL & GAS ONSHORE LP  
 ECMC Location Name (ID): BADDING 35N-2HZ (319049)  
 Transect ID: Reference Transect 1 (Photo Point J)  
 Transect Length: 310 ft.  
 Assessment Date: 9/19/2024  
 Inspector: Erik Garcia

Point	Foliar	Species	Basal	Species
1	Forb	<i>Mentzelia decapetala</i>	Forb	<i>Verbena bracteata</i>
2	Noxious Weed C	<i>Bromus tectorum</i>	Non Vegetative	Litter
3	Noxious Weed C	<i>Bromus tectorum</i>	Non Vegetative	Litter
4	Forb	<i>Ambrosia psilostachya</i>	Non Vegetative	Bare Ground
5	Noxious Weed C	<i>Bromus tectorum</i>	Undesirable	<i>Salsola L.</i>
6	Noxious Weed C	<i>Bromus tectorum</i>	Non Vegetative	Litter
7	Grass	<i>Calamovilfa longifolia</i>	Non Vegetative	Litter
8	Grass	<i>Calamovilfa longifolia</i>	Non Vegetative	Litter
9	Noxious Weed C	<i>Bromus tectorum</i>	Forb	<i>Ambrosia psilostachya</i>
10	Forb	<i>Ambrosia psilostachya</i>	Non Vegetative	Litter
11	Grass	<i>Bouteloua gracilis</i>	Forb	<i>Ambrosia psilostachya</i>
12	Grass	<i>Calamovilfa longifolia</i>	Non Vegetative	Litter
13	Noxious Weed C	<i>Bromus tectorum</i>	Non Vegetative	Litter
14	Noxious Weed C	<i>Bromus tectorum</i>	Non Vegetative	Litter
15	Grass	<i>Calamovilfa longifolia</i>	Non Vegetative	Litter
16	Forb	<i>Helianthus petiolaris</i>	Non Vegetative	Litter
17	Noxious Weed C	<i>Bromus tectorum</i>	Undesirable	<i>Kochia scoparia</i>
18	Grass	<i>Bouteloua gracilis</i>	Noxious Weed C	<i>Bromus tectorum</i>
19	Grass	<i>Calamovilfa longifolia</i>	Non Vegetative	Litter
20	Noxious Weed C	<i>Bromus tectorum</i>	Non Vegetative	Litter
21	Noxious Weed C	<i>Bromus tectorum</i>	Non Vegetative	Litter
22	Noxious Weed C	<i>Bromus tectorum</i>	Undesirable	<i>Kochia scoparia</i>
23	Grass	<i>Calamovilfa longifolia</i>	Noxious Weed C	<i>Bromus tectorum</i>
24	Grass	<i>Calamovilfa longifolia</i>	Noxious Weed C	<i>Bromus tectorum</i>
25	Undesirable	<i>Kochia scoparia</i>	Undesirable	<i>Kochia scoparia</i>
26	Undesirable	<i>Salsola L.</i>	Undesirable	<i>Salsola L.</i>
27	Noxious Weed C	<i>Bromus tectorum</i>	Undesirable	<i>Kochia scoparia</i>
28	Undesirable	<i>Salsola L.</i>	Undesirable	<i>Kochia scoparia</i>
29	Noxious Weed C	<i>Bromus tectorum</i>	Non Vegetative	Litter
30	N/A	N/A	Non Vegetative	Litter
31	Noxious Weed C	<i>Bromus tectorum</i>	Non Vegetative	Litter
32	Noxious Weed C	<i>Bromus tectorum</i>	Non Vegetative	Litter
33	Noxious Weed C	<i>Bromus tectorum</i>	Non Vegetative	Litter
34	Noxious Weed C	<i>Bromus tectorum</i>	Non Vegetative	Litter
35	Noxious Weed C	<i>Bromus tectorum</i>	Grass	<i>Calamovilfa longifolia</i>
36	Noxious Weed C	<i>Bromus tectorum</i>	Non Vegetative	Litter
37	Undesirable	<i>Kochia scoparia</i>	Non Vegetative	Litter
38	Noxious Weed C	<i>Bromus tectorum</i>	Non Vegetative	Litter
39	Noxious Weed C	<i>Bromus tectorum</i>	Non Vegetative	Litter
40	Noxious Weed C	<i>Bromus tectorum</i>	Non Vegetative	Litter
41	Noxious Weed C	<i>Bromus tectorum</i>	Non Vegetative	Litter
42	Noxious Weed C	<i>Bromus tectorum</i>	Non Vegetative	Litter
43	Noxious Weed C	<i>Bromus tectorum</i>	Non Vegetative	Litter
44	Noxious Weed C	<i>Bromus tectorum</i>	Noxious Weed C	<i>Bromus tectorum</i>
45	Grass	<i>Hesperostipa comata</i>	Non Vegetative	Litter
46	Forb	<i>Ambrosia psilostachya</i>	Non Vegetative	Litter
47	Forb	<i>Ambrosia psilostachya</i>	Non Vegetative	Litter
48	Forb	<i>Ambrosia psilostachya</i>	Non Vegetative	Litter
49	Noxious Weed C	<i>Bromus tectorum</i>	Forb	<i>Ambrosia psilostachya</i>
50	Forb	<i>Heterotheca spp.</i>	Non Vegetative	Litter



# Vegetation Survey (Field Data Table)

Client: KERR MCGEE OIL & GAS ONSHORE LP  
 ECMC Location Name (ID): BADDING 35N-2HZ (319049)  
 Transect ID: Reference Transect 2 (Photo Point K)  
 Transect Length: 301 ft.  
 Assessment Date: 9/19/2024  
 Inspector: Erik Garcia

Point	Foliar	Species	Basal	Species
1	Forb	<i>Grindelia squarrosa</i>	Non Vegetative	Litter
2	Forb	<i>Grindelia squarrosa</i>	Noxious Weed C	<i>Convolvulus arvensis</i>
3	Noxious Weed C	<i>Bromus tectorum</i>	Noxious Weed C	<i>Convolvulus arvensis</i>
4	Shrub	<i>Artemisia filifolia</i>	Shrub	<i>Artemisia filifolia</i>
5	Forb	<i>Argemone polyanthemos</i>	Noxious Weed C	<i>Bromus tectorum</i>
6	Noxious Weed C	<i>Bromus tectorum</i>	Non Vegetative	Litter
7	Forb	<i>Verbena bracteata</i>	Non Vegetative	Bare Ground
8	Shrub	<i>Artemisia filifolia</i>	Shrub	<i>Artemisia filifolia</i>
9	Noxious Weed C	<i>Bromus tectorum</i>	Non Vegetative	Litter
10	Shrub	<i>Artemisia filifolia</i>	Noxious Weed C	<i>Bromus tectorum</i>
11	Grass	<i>Calamovilfa longifolia</i>	Noxious Weed C	<i>Bromus tectorum</i>
12	Grass	<i>Calamovilfa longifolia</i>	Non Vegetative	Litter
13	Noxious Weed C	<i>Bromus tectorum</i>	Non Vegetative	Litter
14	Grass	<i>Calamovilfa longifolia</i>	Non Vegetative	Litter
15	Noxious Weed C	<i>Bromus tectorum</i>	Non Vegetative	Litter
16	Grass	<i>Calamovilfa longifolia</i>	Non Vegetative	Litter
17	Undesirable	<i>Hypochaeris radicata</i>	Non Vegetative	Litter
18	Forb	<i>Opuntia spp.</i>	Non Vegetative	Bare Ground
19	Noxious Weed C	<i>Bromus tectorum</i>	Non Vegetative	Litter
20	N/A	N/A	Non Vegetative	Litter
21	Undesirable	<i>Kochia scoparia</i>	Non Vegetative	Litter
22	Noxious Weed C	<i>Bromus tectorum</i>	Non Vegetative	Bare Ground
23	Grass	<i>Calamovilfa longifolia</i>	Noxious Weed C	<i>Bromus tectorum</i>
24	Grass	<i>Calamovilfa longifolia</i>	Non Vegetative	Litter
25	Undesirable	<i>Kochia scoparia</i>	Non Vegetative	Bare Ground
26	Grass	<i>Calamovilfa longifolia</i>	Noxious Weed C	<i>Bromus tectorum</i>
27	Grass	<i>Calamovilfa longifolia</i>	Non Vegetative	Litter
28	Noxious Weed C	<i>Bromus tectorum</i>	Non Vegetative	Litter
29	Grass	<i>Calamovilfa longifolia</i>	Noxious Weed C	<i>Bromus tectorum</i>
30	Noxious Weed C	<i>Bromus tectorum</i>	Non Vegetative	Litter
31	Forb	<i>Argemone polyanthemos</i>	Noxious Weed C	<i>Bromus tectorum</i>
32	Grass	<i>Bouteloua gracilis</i>	Grass	<i>Bouteloua gracilis</i>
33	Undesirable	<i>Kochia scoparia</i>	Non Vegetative	Litter
34	Grass	<i>Bouteloua gracilis</i>	Grass	<i>Bouteloua gracilis</i>
35	Forb	<i>Argemone polyanthemos</i>	Grass	<i>Bouteloua gracilis</i>
36	Undesirable	<i>Kochia scoparia</i>	Non Vegetative	Bare Ground
37	Undesirable	<i>Kochia scoparia</i>	Non Vegetative	Litter
38	Noxious Weed C	<i>Bromus tectorum</i>	Non Vegetative	Litter
39	Noxious Weed C	<i>Verbascum thapsus</i>	Non Vegetative	Litter
40	Grass	<i>Bouteloua gracilis</i>	Non Vegetative	Litter
41	Forb	<i>Argemone polyanthemos</i>	Non Vegetative	Litter
42	Undesirable	<i>Kochia scoparia</i>	Non Vegetative	Bare Ground
43	Noxious Weed C	<i>Bromus tectorum</i>	Non Vegetative	Litter
44	Noxious Weed C	<i>Bromus tectorum</i>	Non Vegetative	Litter
45	Noxious Weed C	<i>Bromus tectorum</i>	Non Vegetative	Litter
46	Noxious Weed C	<i>Cichorium intybus</i>	Non Vegetative	Litter
47	Undesirable	<i>Kochia scoparia</i>	Non Vegetative	Litter
48	Undesirable	<i>Kochia scoparia</i>	Non Vegetative	Litter
49	Noxious Weed C	<i>Bromus tectorum</i>	Noxious Weed C	<i>Bromus tectorum</i>
50	Noxious Weed C	<i>Bromus tectorum</i>	Non Vegetative	Litter