

LEASE Brewer A WELL NO. 3

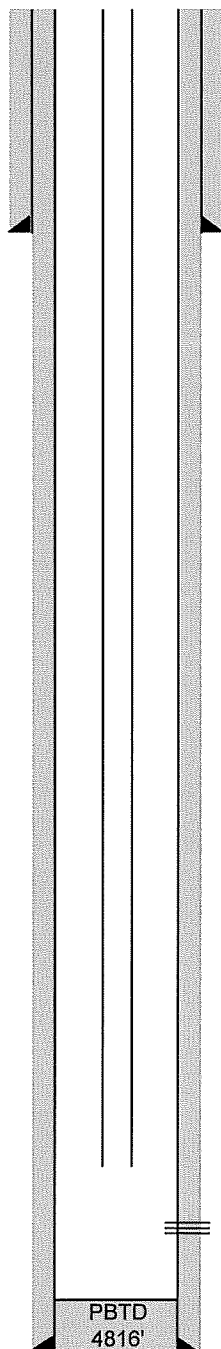
LOCATION NW SE SE 15-8N-53W COUNTY Logan STATE CO

OPERATOR Beren Corporation FIELD Dale

ELEVATION: GR                      DF                      KB 4116'

DATE DRILLED 6/1954 ZERO MEASUREMENT KB

API NO. 05-075-05793



8 5/8" @ 593'  
w/ 300 sx cement

Top of Cement @ 4184'  
Estimated based off Brewer A 2 cement top

Tubing: 2-3/8"

4807'-4811' J Sand

PBTD  
4816'

5 1/2" @ 4825'  
w/ 100 sx cement

TD 4826'