

API # 125-10155      Loc. # 337397

FIELD NAME BALLYNEAL - #1970

Spud Date 8/11/2006

Basin DENVER - JULESBURG

Location NWSE 33 5N 43W 6

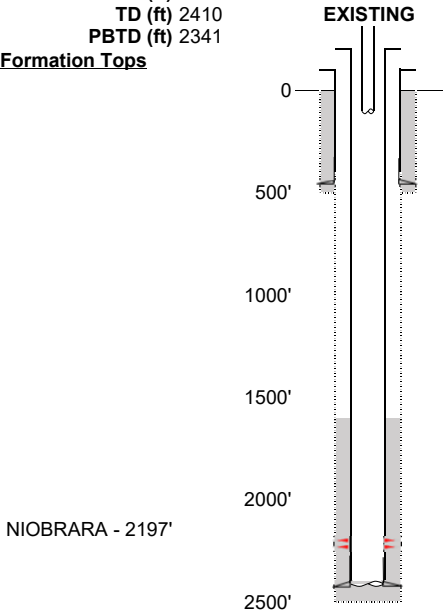
Elevation GL (ft) 3677

Elevation KB (ft) 3682

TD (ft) 2410

PBTD (ft) 2341

Formation Tops



Existing Casing and Cement Coverage

SURF: Size: 7", Hole Size: 9.875 in.  
Depth: 458 ft., Weight: UNK  
Cement: 179 sx, Top: 0 ft., Method: Vis

Deepest DWR w/in 1 mi.= 340'

1ST, Size: 4.5", Hole Size: 6.25"  
Depth: 2395', Weight: UNK  
Cement: 75 sx, TOC: 1600', Method: CBL

tubing UNK  
TOC = 1600' (CBL)  
NBRR Perfs 2198' - 2240'  
PBTD (ft) 2341'  
TD (ft) 2410'

NIOBRARA - 2197'

PROPOSED

