

# **BOWMAN 13-35-5-44**

API # 125-09569 Loc. # 336914

FIELD NAME BALLYNEAL - #1970

Spud Date 2/12/2006

Basin DENVER - JULESBURG

Location SWSW 35 5N 44W 6

Elevation GL (ft) 3735

Elevation KB (ft) 3740

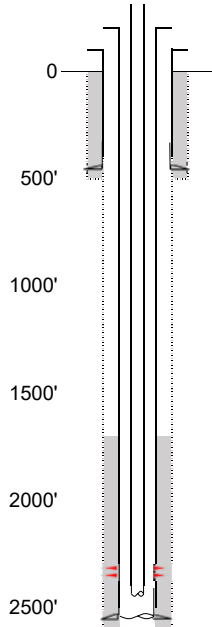
TD (ft) 2570

PBTD (ft) 2509

## **Formation Tops**

NIOBRARA - 2318'

## **EXISTING**



## **Existing Casing and Cement Coverage**

SURF: Size: 7", Hole Size: 9.875 in.

Depth: 446 ft., Weight: UNK

Cement: 145 sx, Top: 0 ft., Method: Vis

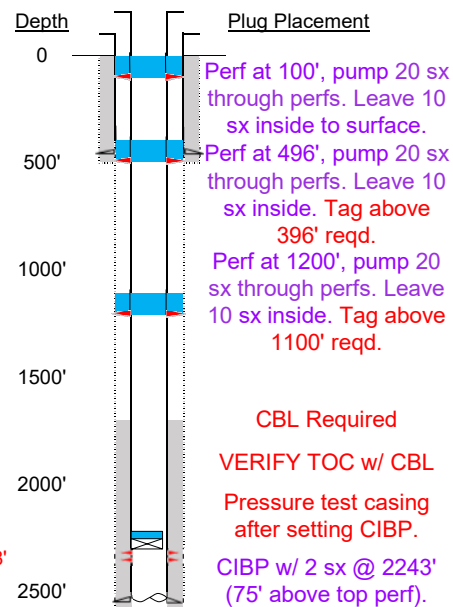
Deepest DWR w/in 1 mi. = 400'

1ST, Size: 4.5", Hole Size: 6.25"  
Depth: 2552', Weight: UNK  
Cement: 75 sx, TOC: 1725', Method: CBL

tubing UNK  
TOC = 1725' (CBL)  
NBRR Perfs 2318' - 2350'  
PBTD (ft) 2509'  
TD (ft) 2570'

NIOBRARA - 2318'

## **PROPOSED**



## **Depth**

## **Plug Placement**

Perf at 100', pump 20 sx through perfs. Leave 10 sx inside to surface.

Perf at 496', pump 20 sx through perfs. Leave 10 sx inside. Tag above 396' reqd.

Perf at 1200', pump 20 sx through perfs. Leave 10 sx inside. Tag above 1100' reqd.

CBL Required

VERIFY TOC w/ CBL

Pressure test casing after setting CIBP.

CIBP w/ 2 sx @ 2243' (75' above top perf).