



LEGEND

- WELLHEAD ASSESSMENT BOUNDARIES
- SS-02 APPROXIMATE LOCATION OF SOIL SAMPLES FIELD SCREENED, ONLY, WITH PHOTOIONIZATION DETECTOR
- SS-02 APPROXIMATE LOCATION OF SOIL SAMPLES SUBMITTED FOR LABORATORY ANALYSIS

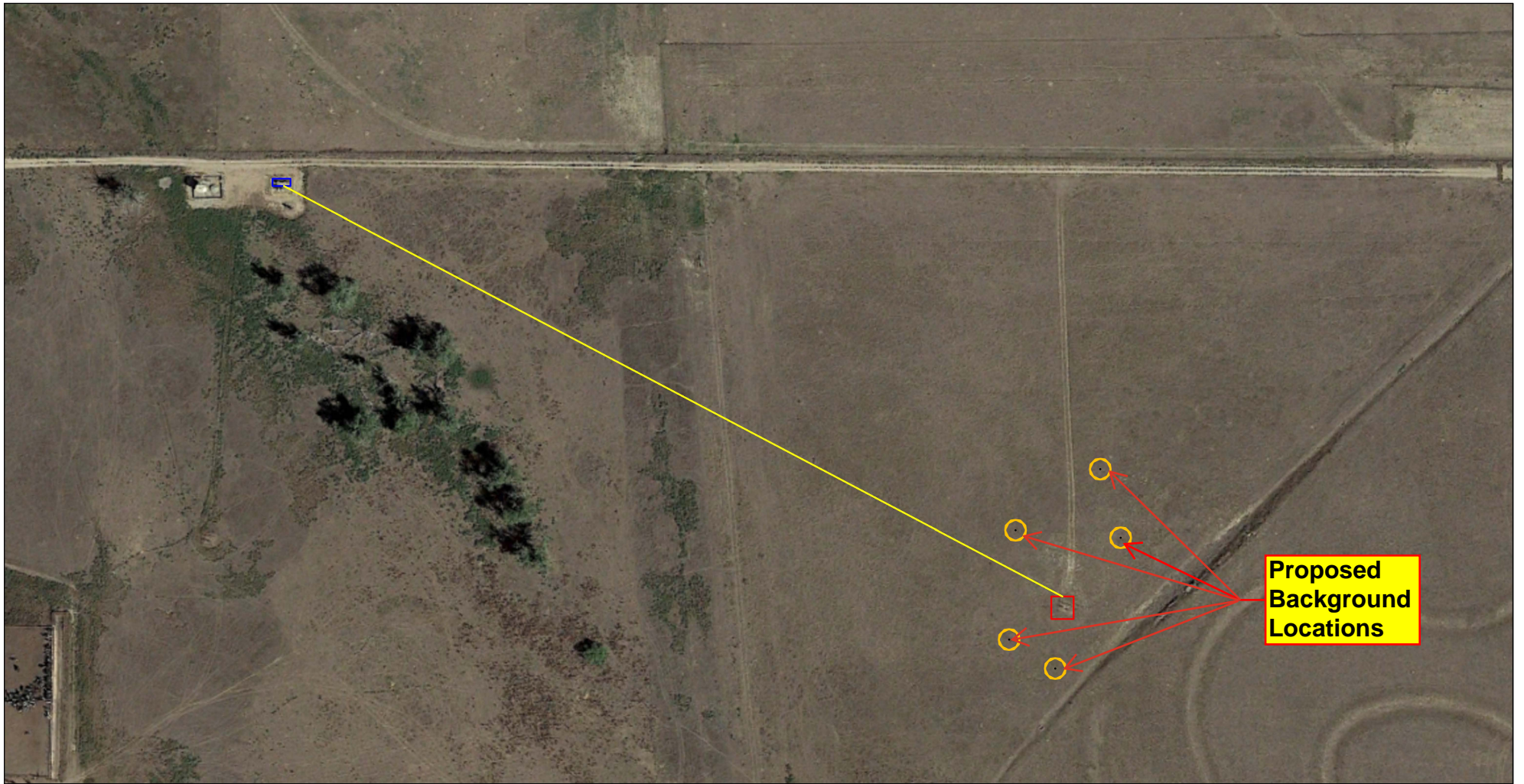
Proposed Site Investigation
HUNTSMAN G #13-9
CLOSURE ASSESSMENT 40.310550
-104.604642
NE¼ SE¼ SEC.13 T4N R65W 6PM
WELD COUNTY, COLORADO
API # 05-123-16321
REMEDATION # 31082

FIGURE NO.
1

DRAWN BY:
RS

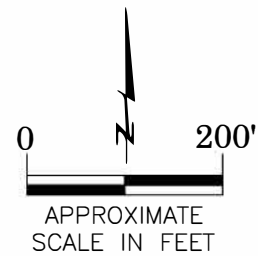


EAGLE
ENVIRONMENTAL
CONSULTING, LLC
8000 W 44th Ave, Wheat Ridge, CO 80033
Ph: 303-433-0479 • F: 303-325-5449



LEGEND

- FORMER HUNTSMAN G #13-9 WELLHEAD (PLUGGED AND ABANDONED)
- ASSOCIATED SEPARATOR
- APPROXIMATE FLOWLINE LOCATION



Proposed Background Locations
 HUNTSMAN G #13-9
 CLOSURE ASSESSMENT
 40.310550 / -104.604642
 NE¼ SE¼ SEC.13 T4N R65W 6PM
 WELD COUNTY, COLORADO
 API # 05-123-16321
 REMEDIATION # 31082

FIGURE NO.
2

DRAWN BY:
RS



EAGLE
 ENVIRONMENTAL
 CONSULTING, LLC
 8000 W 44th Ave, Wheat Ridge, CO 80033
 Ph: 303-433-0479 • F: 303-325-5449