

Facility 4
© 19-Mar-25 12:40:47 PM
ECMC Environmental Inspection

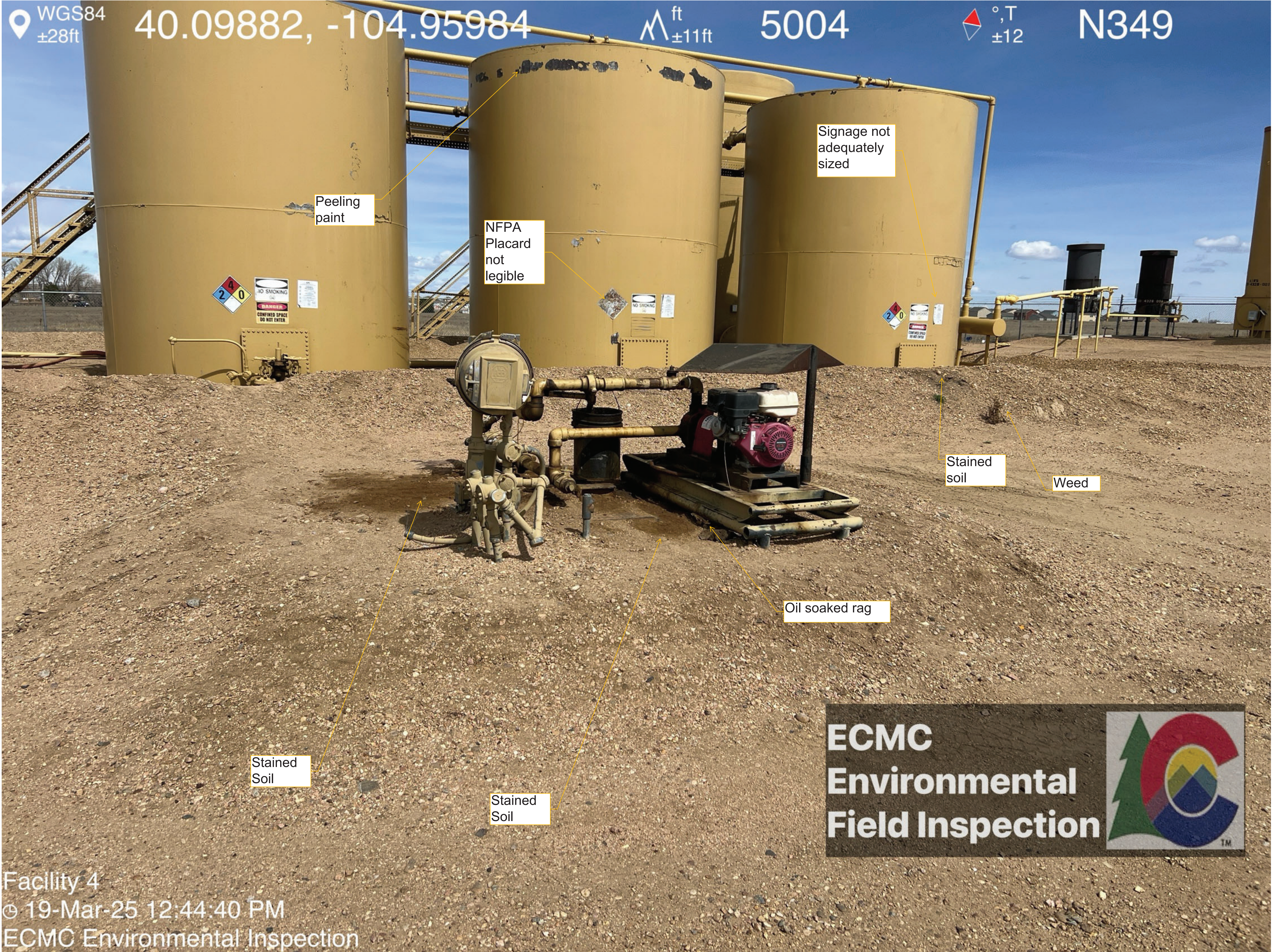
WGS84 $\pm 320\text{ft}$ 40.09902, -104.95998 $\wedge^{\text{ft}}_{\pm 12\text{ft}}$ 4990 $\triangle^{\circ, \text{T}}_{\pm 10}$ NE49

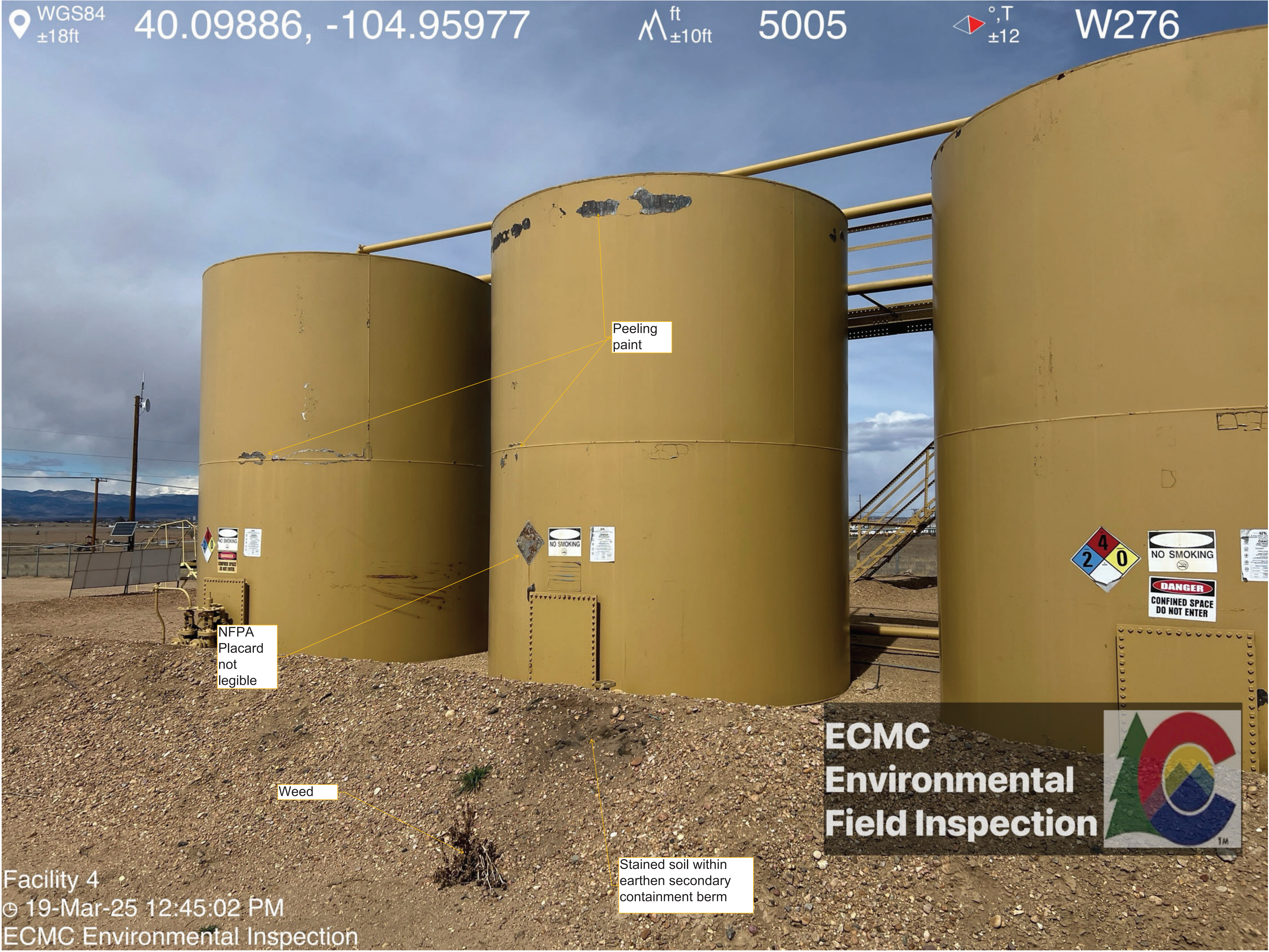


ECMC
Environmental
Field Inspection

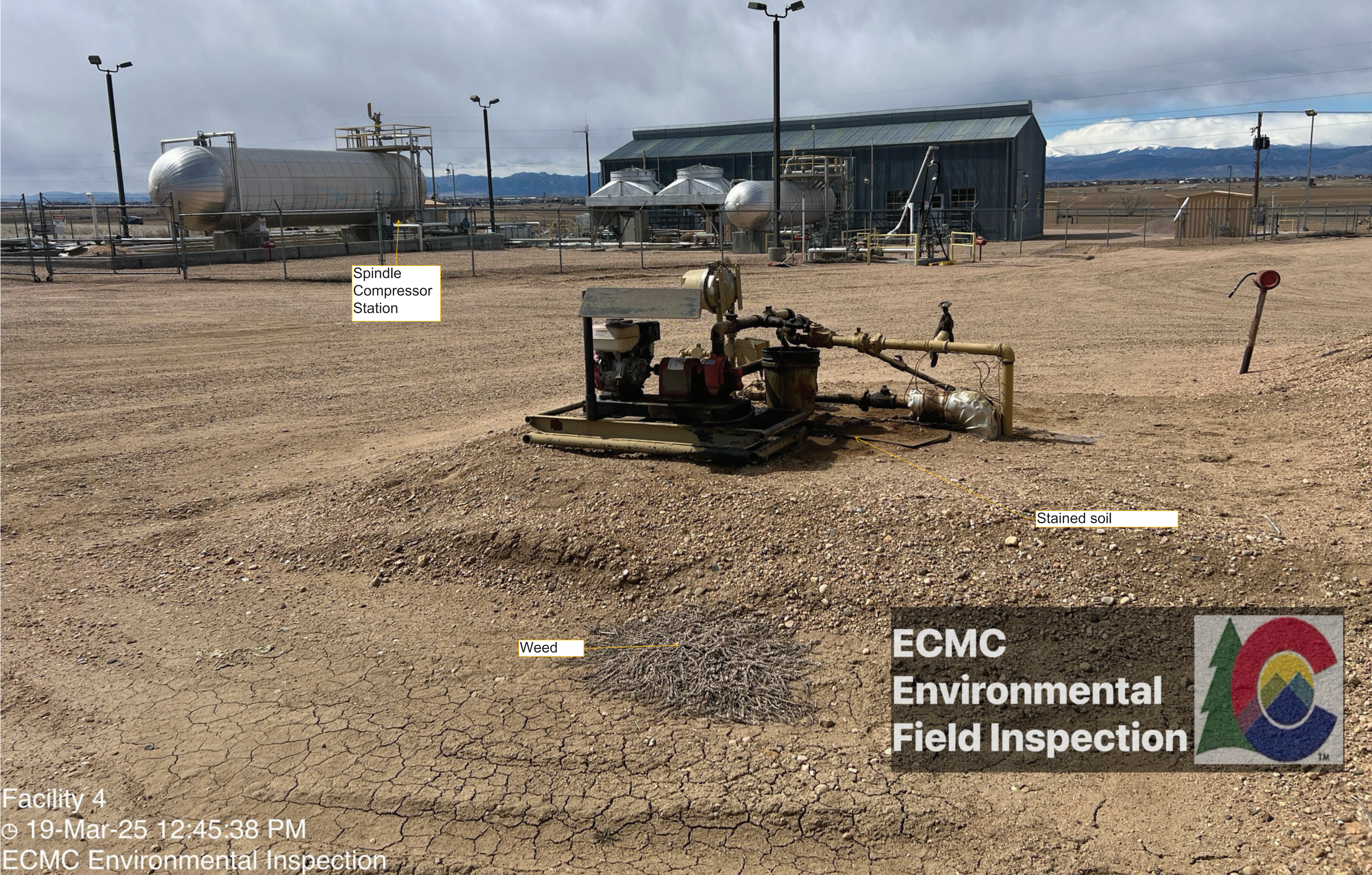


Facility 4
© 19-Mar-25 12:41:53 PM
ECMC Environmental Inspection





Facility 4 •
© 19-Mar-25 12:45:02 PM
ECMC Environmental Inspection



Facility 4
© 19-Mar-25 12:45:38 PM
ECMC Environmental Inspection



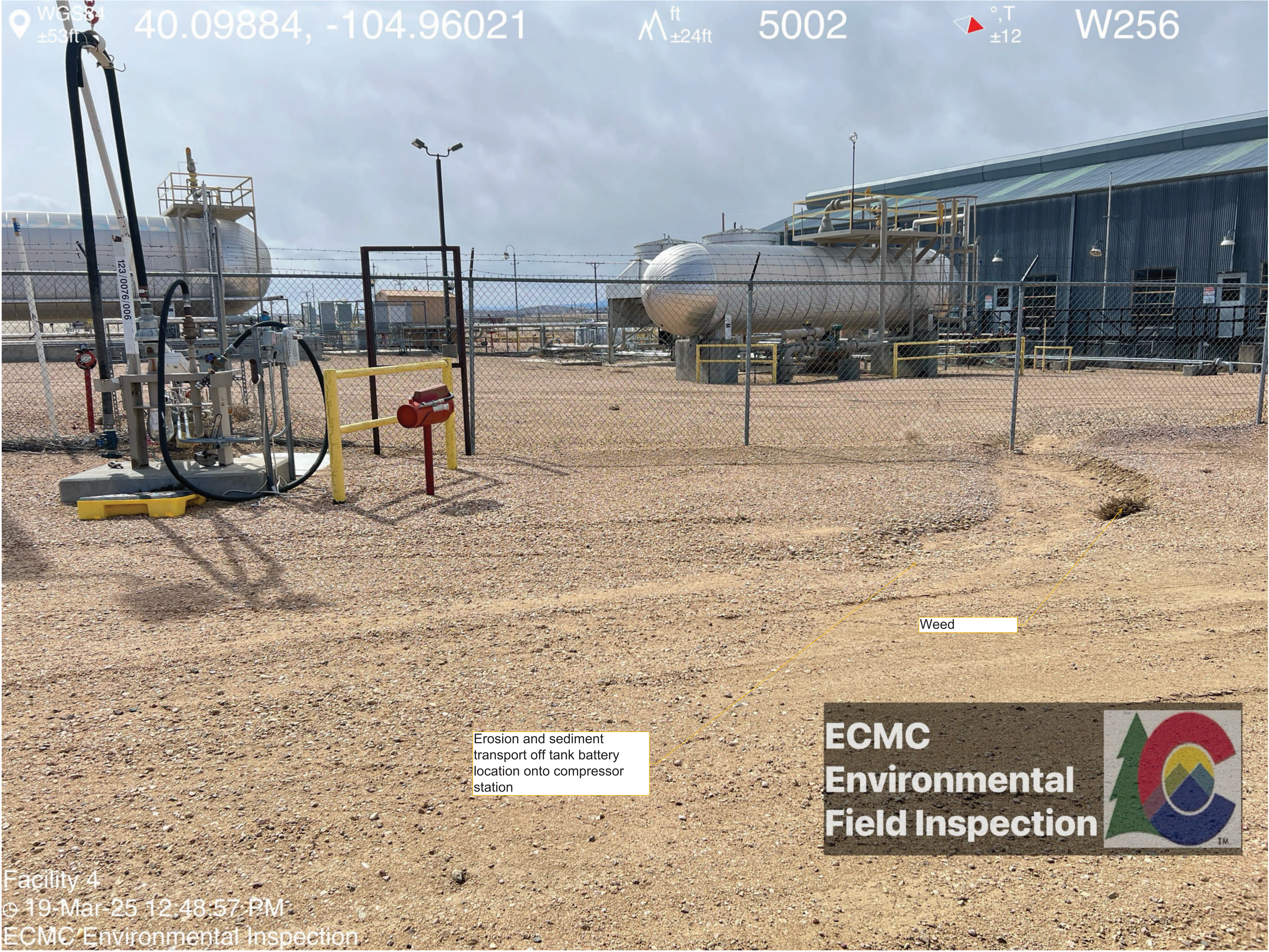
Facility 4
© 19-Mar-25 12:47:46 PM
ECMC Environmental Inspection



Unused
equipment

Unused equipment. AST with no
no LOTO, no contents/volume labels,
signage/placards, no secondary
containment, rusted

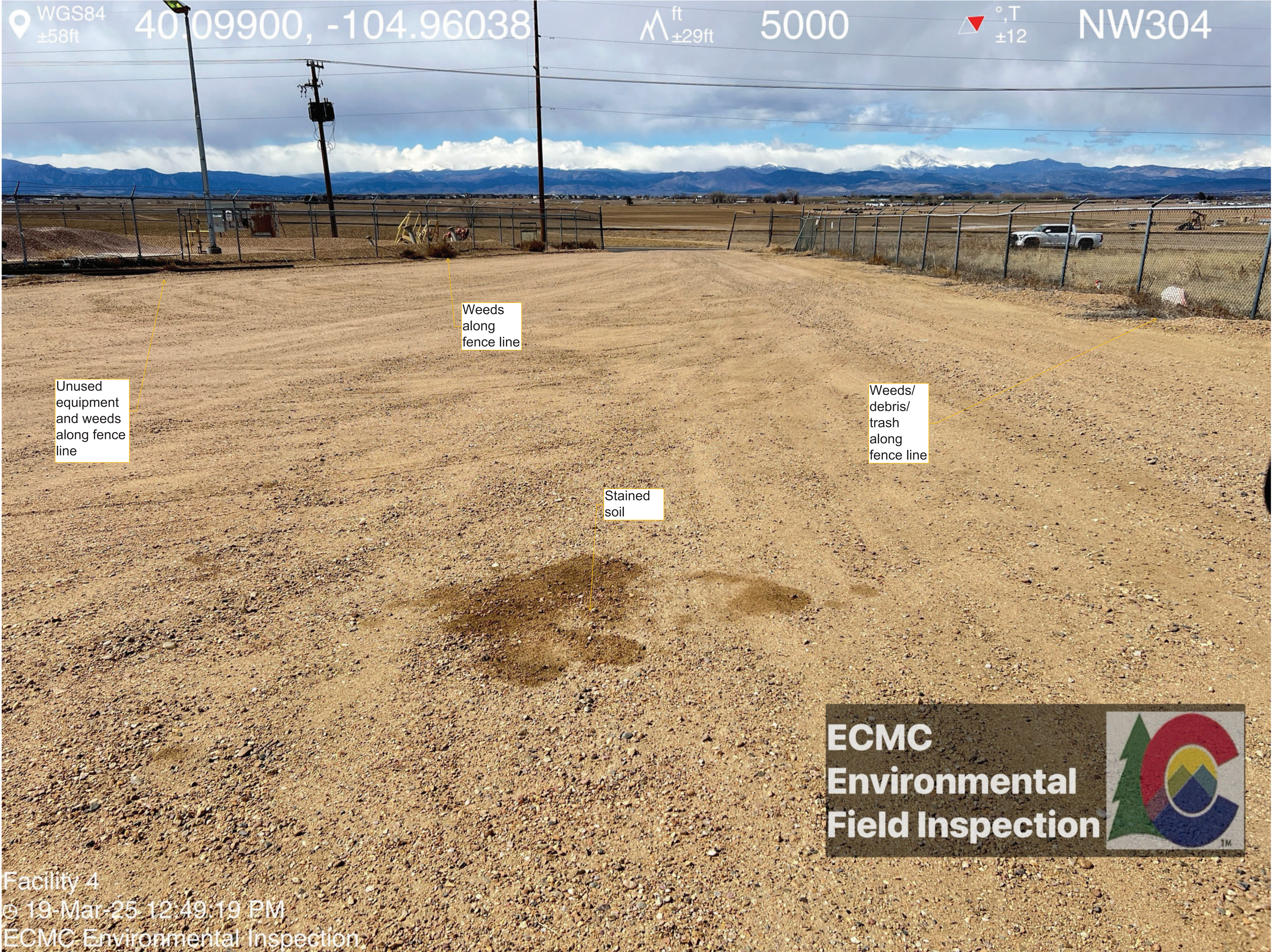
ECMC
Environmental
Field Inspection



Erosion and sediment
transport off tank battery
location onto compressor
station

Weed

ECMC
Environmental
Field Inspection



WGS84
±58ft
40.09900, -104.96038

ft
±29ft

5000

°T
±12

NW304

Unused
equipment
and weeds
along fence
line

Weeds
along
fence line

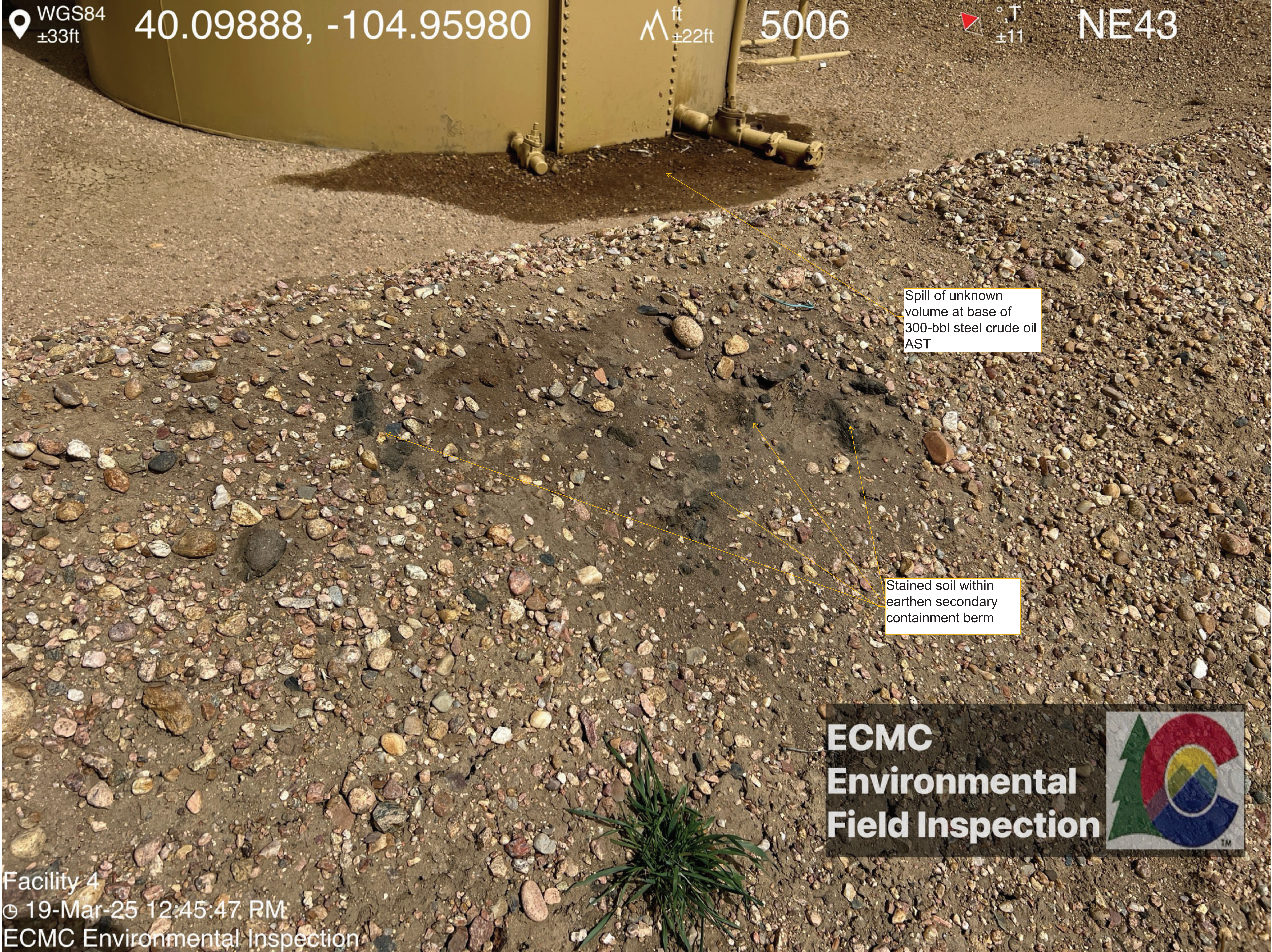
Weeds/
debris/
trash
along
fence line

Stained
soil

ECMC
Environmental
Field Inspection



Facility 4
© 19-Mar-25 12:49:19 PM
ECMC Environmental Inspection



WGS84
±33ft

40.09888, -104.95980

ft
±22ft

5006

°T
±11

NE43

Spill of unknown volume at base of 300-bbl steel crude oil AST

Stained soil within earthen secondary containment berm

ECMC
Environmental
Field Inspection



Facility 4
© 19-Mar-25 12:45:47 PM
ECMC Environmental Inspection