

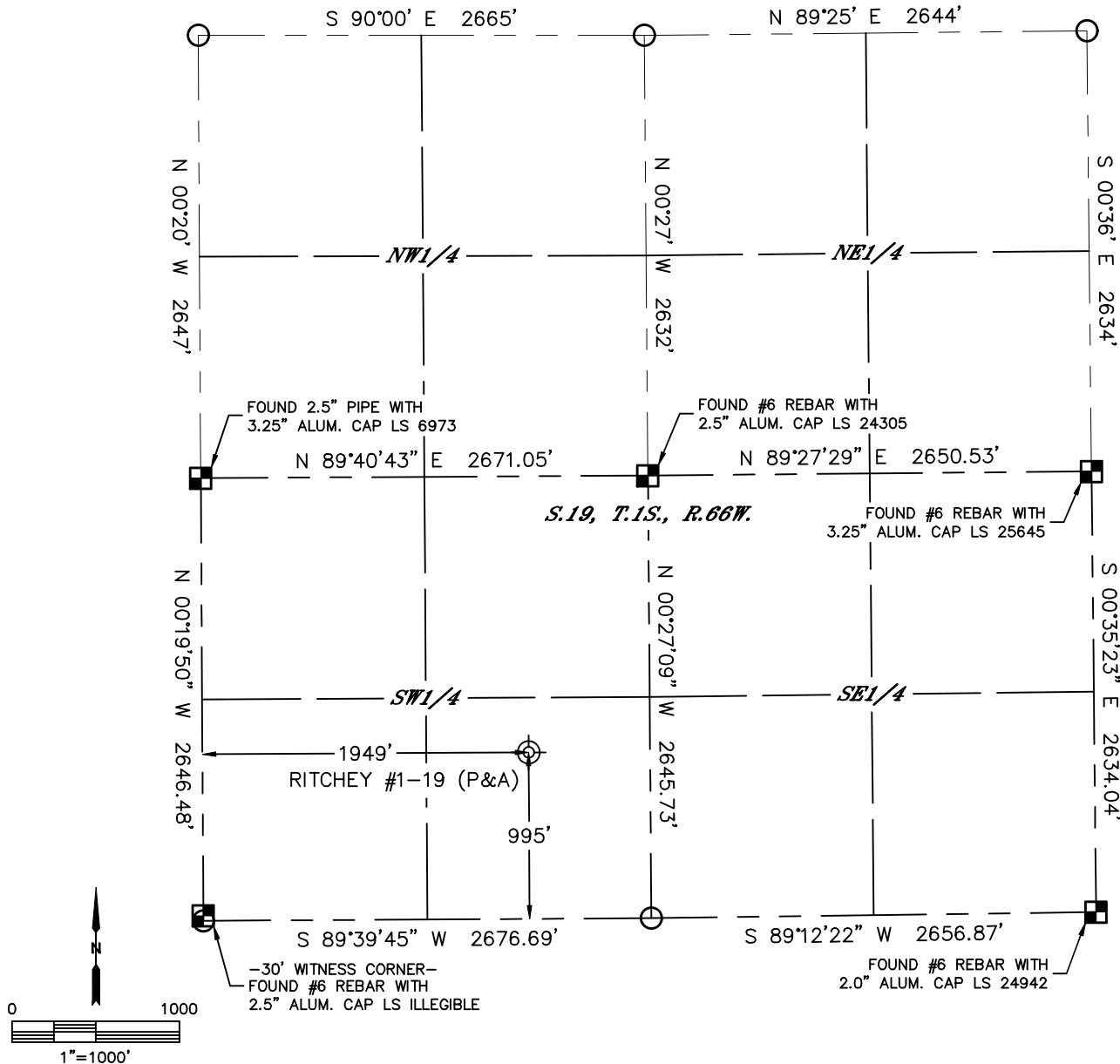


Lat40°, Inc. 6250 W. 10th Street, Unit 2, Greeley, CO 970-515-5294

PLUGGED AND ABANDONED WELL EXHIBIT

RITCHEY #1-19

SECTION: 19
TOWNSHIP: 1S
RANGE: 66W
6TH. P.M.
WELD COUNTY, CO



CLIENT: PDC ENERGY, INC.					LANDMAN: PAUL MONTVILLE					
INSTRUMENT OPERATOR: DUSTIN SIMON					SURVEY DATE: 3/24/2025			SURFACE USE: CROPLAND		
SHL FOOTAGE			SHL LAT °		SHL LONG °		SHL PDOP	SHL ELEV (FT.)	SHL 1/4/1/4	SHL S-T-R
995	FSL	1949	FWL	39.94603	-104.82088		1.0	5035	SESW	19-1S-66
DESCRIPTION: FOUND STRONG METAL DETECTOR RING AT NOTED POSITION.										

NOTE:

- 1) Bearings shown are Grid Bearings of the Colorado State Plane Coordinate System, North Zone, North American Datum 1983. The lineal dimensions as contained herein are based upon the "U.S. Survey Foot."
- 2) Distances to section lines measured at 90 degrees from said section lines.
- 3) Ground elevations are based on an observed GPS elevation (NAVD 1988 DATUM).
- 4) Latitude and Longitude shown are (NAD 83 DATUM).
- 5) Sectional data as shown hereon is from previous surveys and was not verified for this P&A Exhibit.
- 6) This map does not represent a boundary survey.

LEGEND

- = ALIQUOT MONUMENT AS DESCRIBED
- = CALCULATED POSITION PER PRAIRIE 12C WELL LOCATION CERTIFICATE
- ⊙ = ABANDONED WELL



SHEET 1 OF 2

Brian S. Rottinghaus—On behalf of Lat40°, Inc.
Colorado Licensed Professional Land Surveyor No. 38571
DATE: 3/26/2025
PROJECT#: 2025093



Lat40°, Inc. 6250 W. 10th Street, Unit 2, Greeley, CO 970-515-5294

PLUGGED AND ABANDONED WELL EXHIBIT

RITCHEY #1-19

SECTION: 19
TOWNSHIP: 1S
RANGE: 66W
6TH. P.M.
WELD COUNTY, CO
DATE: 3/24/2025



VIEW NORTH



VIEW WEST



VIEW EAST



VIEW SOUTH