

Wellhead Closure Checklist						
COGCC Rule 911.a.(4) Environmental Site Closure Assessment Field Form						
Additional attachments (optional):		Pit Closure		Tank Battery Closure		Flowline Closure
Site Name & COGCC Facility Number: Lucci B #1-20		Date: 02/05/24				Remediation Project #: 29696
Associated Wells: 05-123-25938		Age of Site: Years				Number of Photos Attached: 6
Location: (GPS coordinates of wellhead or southeastern most wellhead for multiple)					40.428584 / -104.503234	
General Condition of Site: (General observations regarding housekeeping, corrosion, waste management, etc.)						
Good condition.						
USCS Soil Type: SM				Estimated Depth to Groundwater: Approx. 15-25'		
Hydrocarbon Impacted Soils / Spills: (Note estimated size and if impact appears to be surficial or extends to an unknown depth)						
None observed.						
Salt Crusted Soils or Impacted Vegetation: (Note estimated size and if impact appears to be surficial or extends to an unknown depth)						
None observed.						
Wellhead(s)						
Well API	05-123-25938					
Age	Years					
Condition of surface around wellhead	Good - Per Crew					
PID Readings	WH-N: 1.0	WH-E: 0.9	WH-S: 1.3	WH-W: 1.3		
Condition of subsurface (staining present)	Good - No odor/no staining					
PID Readings	3.0	3.2	2.4	2.5	3.6	
Sample taken? Location/Sample ID#	WH-SS-01	WH-SS-02	WH-SS-03	WH-SS-04	WH-FS-01	
Photo Number(s)	See photolog					
Other observations regarding wellheads:						
Well casing cut/capped following assessment.						
Summary						
Was impacted soil identified?						
<input checked="" type="checkbox"/> No      Yes - less than 10 cubic yards      Yes - more than 10 cubic yards						
Total number of samples field screened: 9				Total number of samples collected: 9		
Highest PID Reading: 3.6				Total number of samples submitted to lab for analysis: 1		
If more than 10 cubic yards of impacted soil were observed:						
Vertical extent:				Estimated spill volume:		
Lateral extent:				Volume of soil removed:		
Is additional investigation required?						
Was groundwater encountered during the investigation?						
<input checked="" type="checkbox"/> No      Yes - not impacted or in contact with impacted soils      Yes - groundwater impacted and/or in contact with impacted soils						
Measured depth to groundwater:				Was remedial groundwater removal conducted?      Yes      No		
Date Groundwater was encountered:				Commencement date of removal:		
Sheen on groundwater?      Yes      No				Volume of groundwater removed prior to sampling:		
Free product observed?      Yes      No				Volume of groundwater removed post sampling:		
Total number of samples collected:				Total Volume of groundwater removed:		
Total number of samples submitted to lab for analysis:						



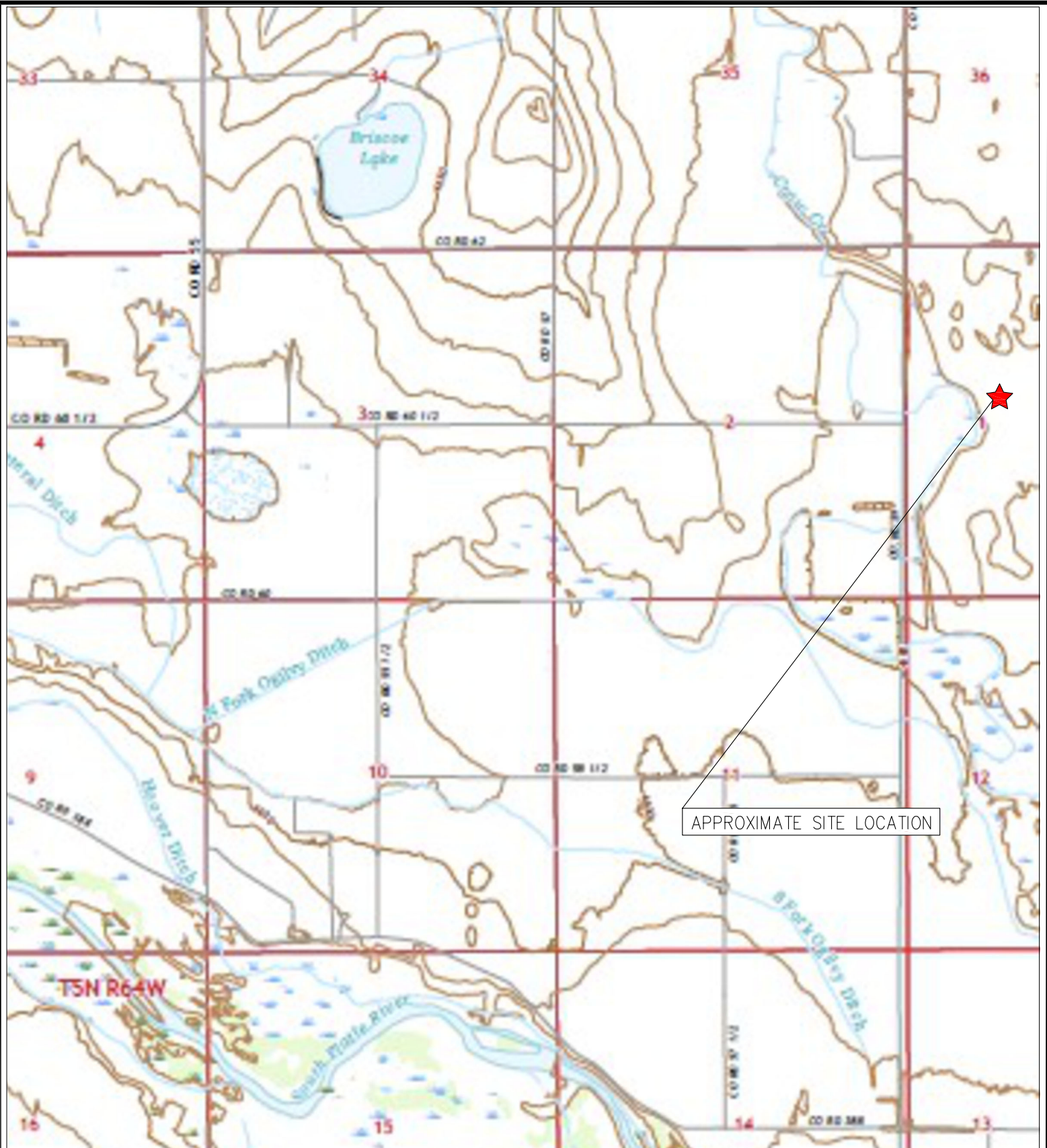
## **FIGURES**

**Figure 1: Topographic Site Location Map**

**Figure 2: Aerial Site Location Map**

**Figure 3: Soil Sampling Location Map**

**Figure 4: Soil Analytical Map**



TOPOGRAPHIC SITE LOCATION MAP  
 LUCI B #1-20  
 CLOSURE ASSESSMENT  
 40.428584 / -104.503234  
 SW¼ NW¼ SEC.1 T5N R64W 6PM  
 WELD COUNTY, COLORADO  
 API # 05-123-25938  
 REMEDIATION # 29696



**EAGLE**  
 ENVIRONMENTAL  
 CONSULTING, LLC

8000 W 44th Ave, Wheat Ridge, CO 80033  
 Ph: 303-433-0479 • F: 303-325-5449

SOURCE: USGS 7.5 MINUTE TOPOGRAPHIC MAP,  
 KERSEY, CO QUADRANGLE 2022

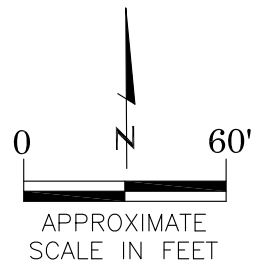
FIGURE NO. 1





#### LEGEND

- FORMER LUCCI B #1-20 WELLHEAD (PLUGGED AND ABANDONED)
- ASSOCIATED SEPARATOR
- APPROXIMATE FLOWLINE LOCATION



#### AERIAL SITE LOCATION MAP

LUCCI B #1-20  
CLOSURE ASSESSMENT  
40.428584 / -104.503234  
SW¼ NW¼ SEC.1 T5N R64W 6PM  
WELD COUNTY, COLORADO  
API # 05-123-25938  
REMEDATION # 29696

FIGURE NO.

2

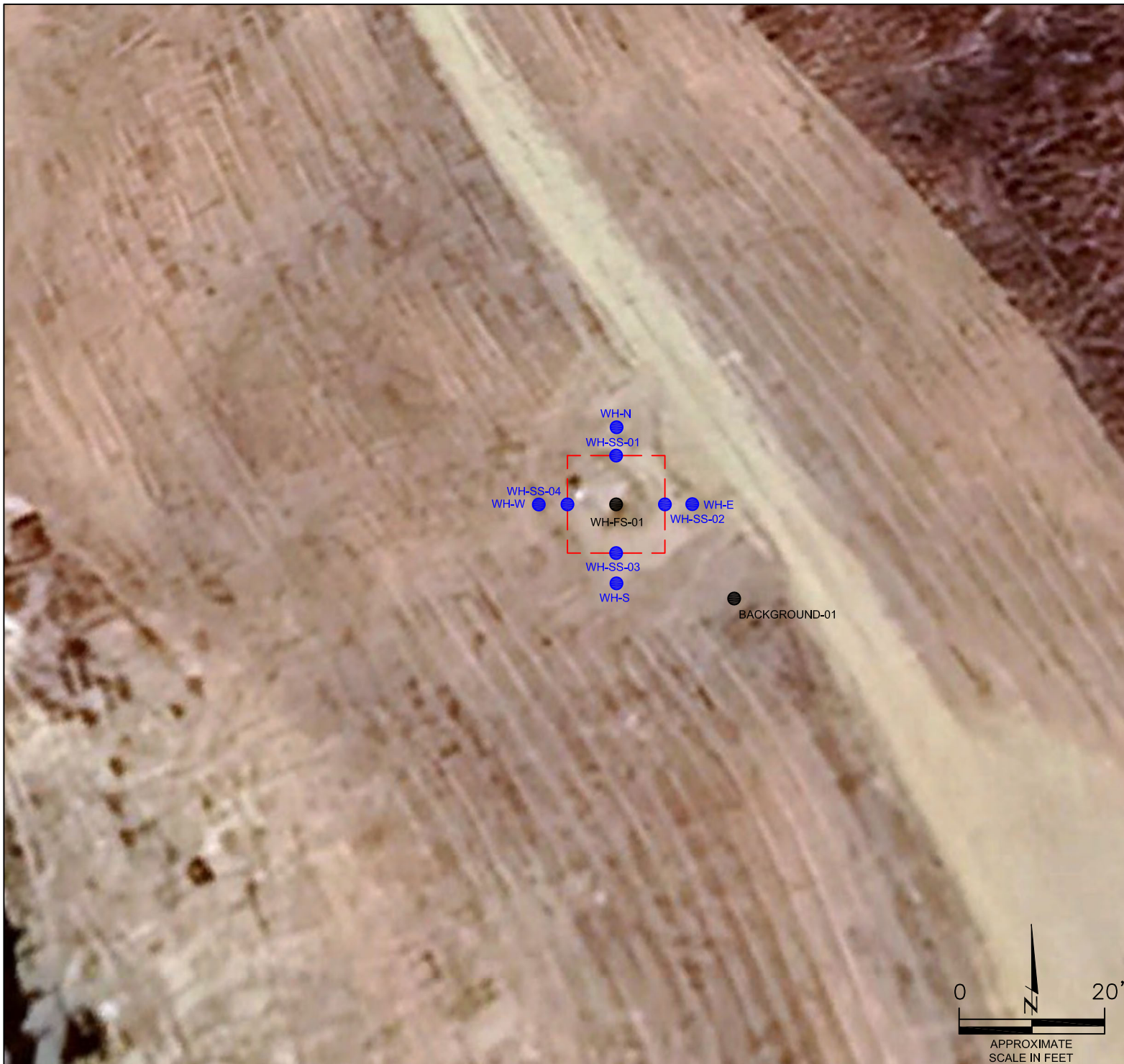
DRAWN BY:

JF



**EAGLE**  
ENVIRONMENTAL  
CONSULTING, LLC  
8000 W 44th Ave, Wheat Ridge, CO 80033  
Ph: 303-433-0479 • F: 303-325-5449





#### LEGEND

- WELLHEAD ASSESSMENT BOUNDARIES
- SS-02 APPROXIMATE LOCATION OF SOIL SAMPLES FIELD SCREENED, ONLY, WITH PHOTOIONIZATION DETECTOR
- SS-02 APPROXIMATE LOCATION OF SOIL SAMPLES SUBMITTED FOR LABORATORY ANALYSIS

SOIL SAMPLING LOCATION MAP  
LUCCI B #1-20  
CLOSURE ASSESSMENT  
40.428584 / -104.503234  
SW¼ NW¼ SEC.1 T5N R64W 6PM  
WELD COUNTY, COLORADO  
API # 05-123-25938  
REMEDIAL # 29696

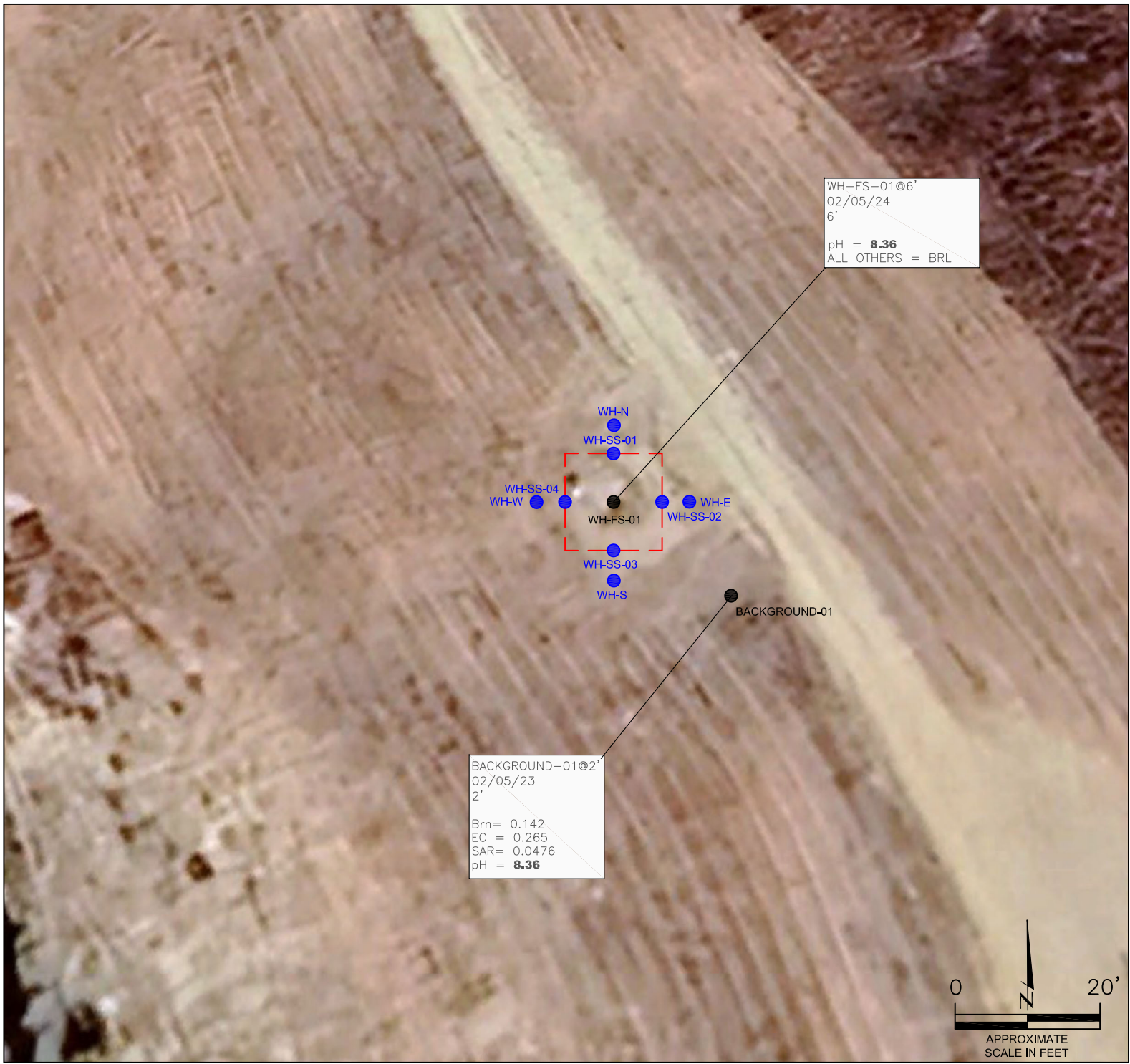
FIGURE NO.  
3

DRAWN BY:  
JF



**EAGLE**  
ENVIRONMENTAL  
CONSULTING, LLC  
8000 W 44th Ave, Wheat Ridge, CO 80033  
Ph: 303-433-0479 • F: 303-325-5449





**LEGEND**

- WELLHEAD ASSESSMENT BOUNDARIES
- SS-02 APPROXIMATE LOCATION OF SOIL SAMPLES FIELD SCREENED, ONLY, WITH PHOTOIONIZATION DETECTOR
- SS-02 APPROXIMATE LOCATION OF SOIL SAMPLES SUBMITTED FOR LABORATORY ANALYSIS

**PARAMETERS**

SAMPLE LOCATION  
DATE  
DEPTH (FEET)  
B = BENZENE (mg/kg)  
T = TOLUENE (mg/kg)  
E = ETHYLBENZENE (mg/kg)  
X = TOTAL XYLENES (mg/kg)  
N = NAPHTHALENE (mg/kg)  
G = TPH-GRO (mg/kg)  
D = TPH-DRO (mg/kg)  
R = TPH-RRO (mg/kg)  
1,2,4-TMB = 1,2,4 TRIMETHYLBENZENE (mg/kg)  
1,3,5-TMB = 1,3,5 TRIMETHYLBENZENE (mg/kg)  
Brn= BORON (mg/L)  
EC = SPECIFIC CONDUCTANCE (mmhos/cm)  
SAR= SODIUM ADSORPTION RATIO  
pH = pH (pH UNITS)  
POLYCYCLIC AROMATIC HYDROCARBONS (PAHs) (mg/kg)

mg/kg = MILLIGRAMS PER KILOGRAM  
mg/L = MILLIGRAMS PER LITER  
mmhos/cm = MILLIMHOS PER CENTIMETER

BRL = BELOW REGULATORY LIMITS

TPH-GRO = TOTAL PETROLEUM HYDROCARBONS - GASOLINE RANGE ORGANICS  
TPH-DRO = TOTAL PETROLEUM HYDROCARBONS - DIESEL RANGE ORGANICS  
TPH-RRO = TOTAL PETROLEUM HYDROCARBONS - RESIDUAL RANGE ORGANICS

NOTES:  
VALUES PRESENTED IN **BOLD** EXCEED ECMC TABLE 915-1 REGULATORY LIMITS.

ECMC = ENERGY & CARBON MANAGEMENT COMMISSION

**SOIL ANALYTICAL MAP**

LUCCI B #1-20  
CLOSURE ASSESSMENT  
40.428584 / -104.503234  
SW¼ NW¼ SEC.1 T5N R64W 6PM  
WELD COUNTY, COLORADO  
API # 05-123-25938  
REMEDATION # 29696

FIGURE NO.  
4

DRAWN BY:  
JF



**EAGLE**  
ENVIRONMENTAL  
CONSULTING, LLC  
8000 W 44th Ave, Wheat Ridge, CO 80033  
Ph: 303-433-0479 • F: 303-325-5449



## **TABLES**

**Table 1: Photoionization Detector Reading Summary**

**Table 2: Soil Analytical Results Summary**

**TABLE 1**  
**PHOTOIONIZATION DETECTOR READING SUMMARY**  
**LUCCI B #1-20**  
**CLOSURE ASSESSMENT**  
**40.428584 / -104.503234**  
**SW¼ NW¼ SEC.1 T5N R64W 6PM**  
**WELD COUNTY, COLORADO**  
**API # 05-123-25938**  
**REMEDIATION # 29696**

Sample Location (Latitude/Longitude)	Date	Approximate Depth (feet)	PID Reading (ppm-v)	Lab Submission (Y/N)
WH-FS-01 @ 6' (40.428582 / -104.503248)	02/05/24	6	3.6	Y
WH-SS-01 @ 5' (40.428597 / -104.503247)	02/05/24	5	3.0	N
WH-SS-02 @ 5' (40.428582 / -104.503226)	02/05/24	5	3.2	N
WH-SS-03 @ 5' (40.428569 / -104.503245)	02/05/24	5	2.4	N
WH-SS-04 @ 5' (40.428583 / -104.503266)	02/05/24	5	2.5	N
WH-N @ 0.5' (40.428621 / -104.503246)	02/05/24	0.5	1.0	N
WH-E @ 0.5' (40.428579 / -104.503202)	02/05/24	0.5	0.9	N
WH-S @ 0.5' (40.428545 / -104.503247)	02/05/24	0.5	1.3	N
WH-W @ 0.5' (40.428583 / -104.503301)	02/05/24	0.5	1.3	N
Background-01 @ 2' (40.428555 / -104.503281)	02/05/24	2	2.0	Y
(Y/N) = Yes or No ppm-v = parts per million by volume PID = Photoionization Detector				



TABLE 2  
SOIL ANALYTICAL RESULTS SUMMARY  
LUCCI B #1-20  
CLOSURE ASSESSMENT  
40.428584 / -104.503234  
SW¼ NW¼ SEC.1 T5N R64W 6PM  
WELD COUNTY, COLORADO  
API # 05-123-25938  
REMEDIATION # 29696

Sample Location			WH-FS-01 @ 6'	Background-01 @ 2'
(Latitude / Longitude)			(40.428582 / -104.503248)	(40.428555 / -104.503281)
Sample Date			2/5/2024	2/5/2024
Sample Depth			6	2
PID Reading (ppm-v)			3.6	2.0
Regulatory Limits				
Chemical of Concern	Units	ECMC Table 915-1 RSSLs	ECMC Table 915-1 GSSLs	
<b>VOCs</b>				
Benzene	mg/kg	1.2	0.0026	<0.00200
Toluene	mg/kg	490	0.69	<0.00200
Ethylbenzene	mg/kg	5.8	0.78	<0.00200
Total Xylenes	mg/kg	58	9.9	<0.00200
Naphthalene	mg/kg	2	0.0038	<0.00380
1,2,4-Trimethylbenzene	mg/kg	30	0.0081	<0.00200
1,3,5-Trimethylbenzene	mg/kg	27	0.0087	<0.00200
<b>TOTAL PETROLEUM HYDROCARBONS</b>				
TPH-GRO	mg/kg	500	--	<0.200
TPH-DRO	mg/kg	500	--	<25.0
TPH-RRO	mg/kg	500	--	<100
<b>POLYCYCLIC AROMATIC HYDROCARBONS</b>				
1-Methyl-naphthalene	mg/kg	18	0.006	<0.002
2-Methyl-naphthalene	mg/kg	24	0.019	<0.002
Acenaphthene	mg/kg	360	0.55	<0.020
Anthracene	mg/kg	1800	5.8	<0.020
Benzo(a)-anthracene	mg/kg	1.1	0.011	<0.005
Benzo(a)-pyrene	mg/kg	0.11	0.24	<0.020
Benzo(b)-fluoranthene	mg/kg	1.1	0.3	<0.020
Benzo(k)-fluoranthene	mg/kg	11	2.9	<0.020
Chrysene	mg/kg	110	9	<0.020
Dibenzo(a,h)-anthracene	mg/kg	0.11	0.096	<0.020
Fluoranthene	mg/kg	240	8.9	<0.020
Fluorene	mg/kg	240	0.54	<0.020
Indeno(1,2,3-cd)-pyrene	mg/kg	1.1	0.98	<0.020
Pyrene	mg/kg	180	1.3	<0.020
<b>SOIL SUITABILITY (Inorganics)</b>				
Boron	mg/L	2	--	<0.101
pH	standard unit	6-8.3	--	<b>8.36</b>
Sodium Adsorption Ratio (SAR)	--	<6	--	0.0456
Specific Conductance (EC)	mmhos/cm	<4	--	0.148
ECMC = Energy & Carbon Management Commission      NA - Not Analyzed      VOCs - Volatile Organic Compounds mg/kg = milligrams per kilogram mmhos/cm = millimhos per centimeter      RSSLs = Residential Soil Screening Levels PID = Photoionization Detector      GSSLs = Protection of Groundwater Soil Screening Levels ppm-v = parts per million by volume      TPH-GRO = Total Petroleum Hydrocarbons - Gasoline Range Organics mg/L = milligrams per liter      TPH-DRO = Total Petroleum Hydrocarbons - Diesel Range Organics SAR = Sodium Adsorption Ratio      TPH-RRO = Total Petroleum Hydrocarbons - Residual Range Organics Notes: Values presented with a less than symbol (<) did not contain concentrations at or above the laboratory reporting limit and/or minimum detection limit Values presented in <b>BOLD</b> exceed ECMC Table 915-1 Regulatory Limits.				



## **ATTACHMENT A**

### **Photo Log**

Lucci B #1-20  
API # 05-123-25938  
Remediation # 29696

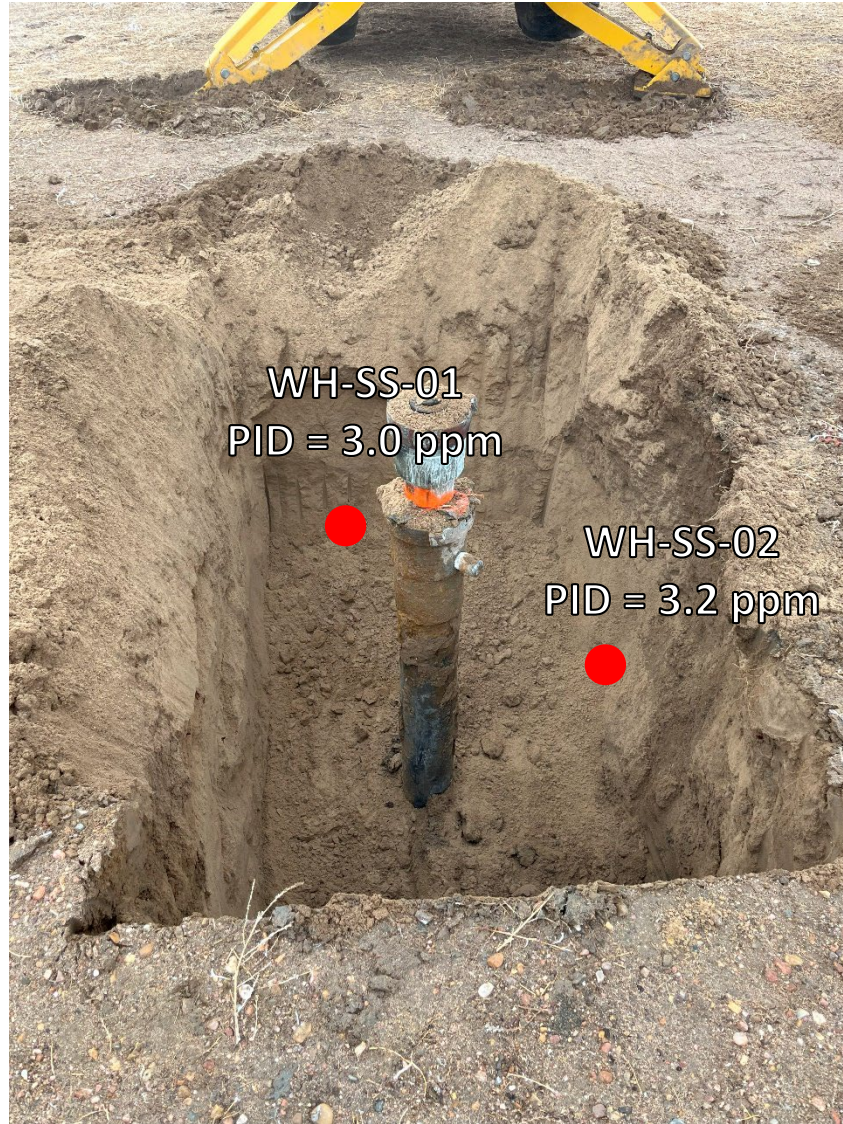
Closure Assessment

February 2024

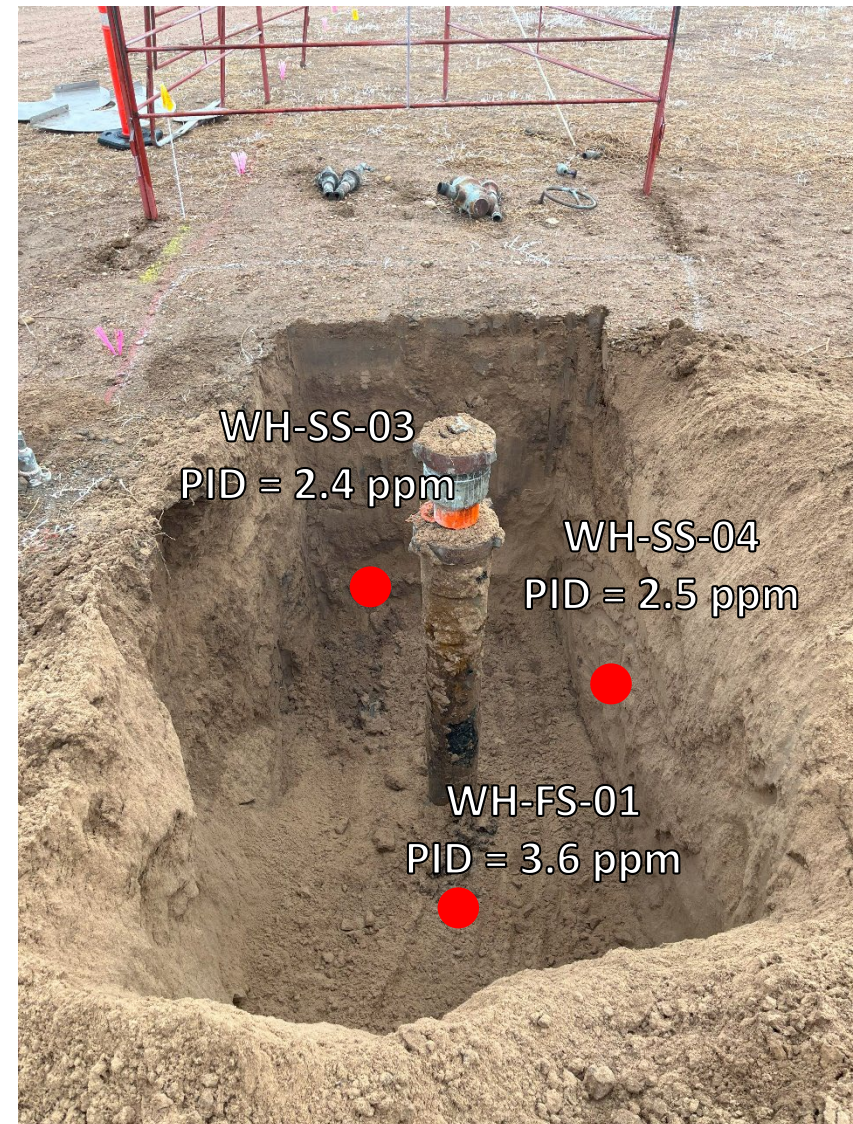




## Wellhead Excavation – 02/05/24



Looking north  
No petroleum hydrocarbon staining or odor observed



Looking south  
No petroleum hydrocarbon staining or odor observed



## Wellhead Surface – 02/05/24



Looking north

Site in good condition – no petroleum hydrocarbon staining or odor  
Observed on surface around wellhead



Looking east

Site in good condition – no petroleum hydrocarbon staining or odor  
Observed on surface around wellhead

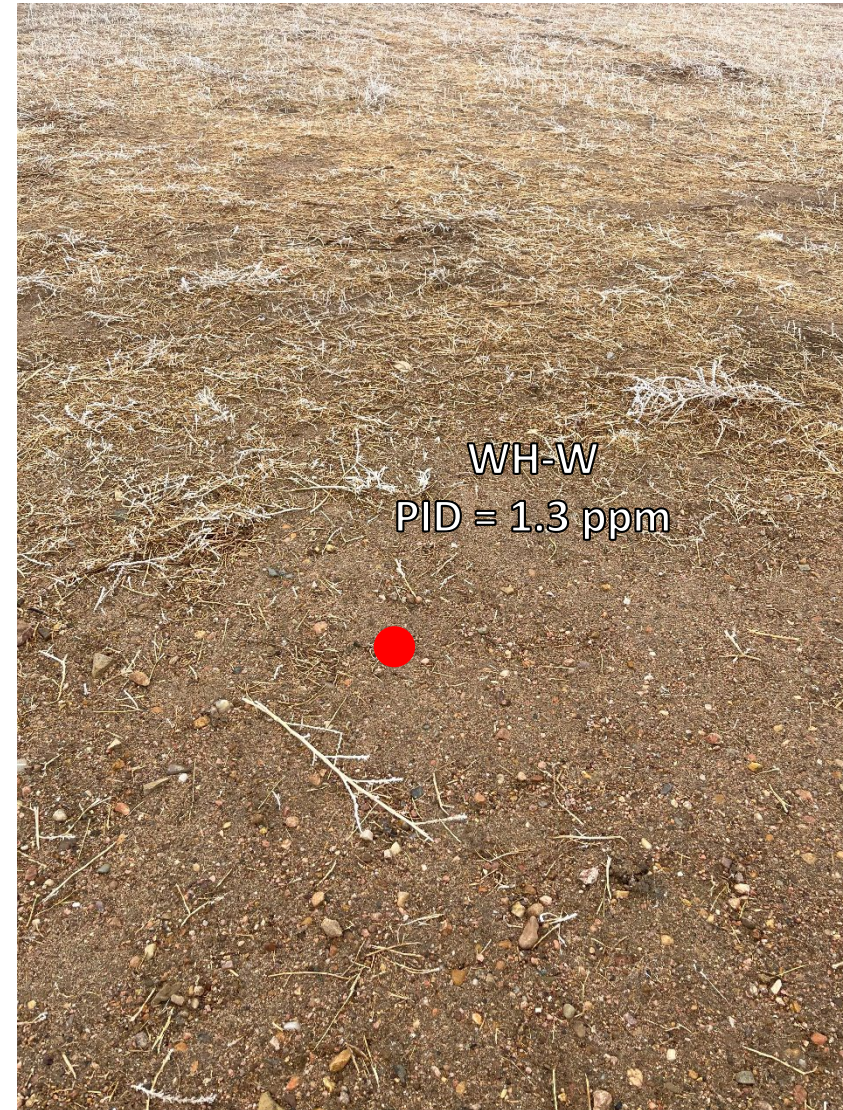


## Wellhead Surface – 02/06/24



Looking south

Site in good condition – no petroleum hydrocarbon staining or odor  
Observed on surface around wellhead



Looking west

Site in good condition – no petroleum hydrocarbon staining or odor  
Observed on surface around wellhead