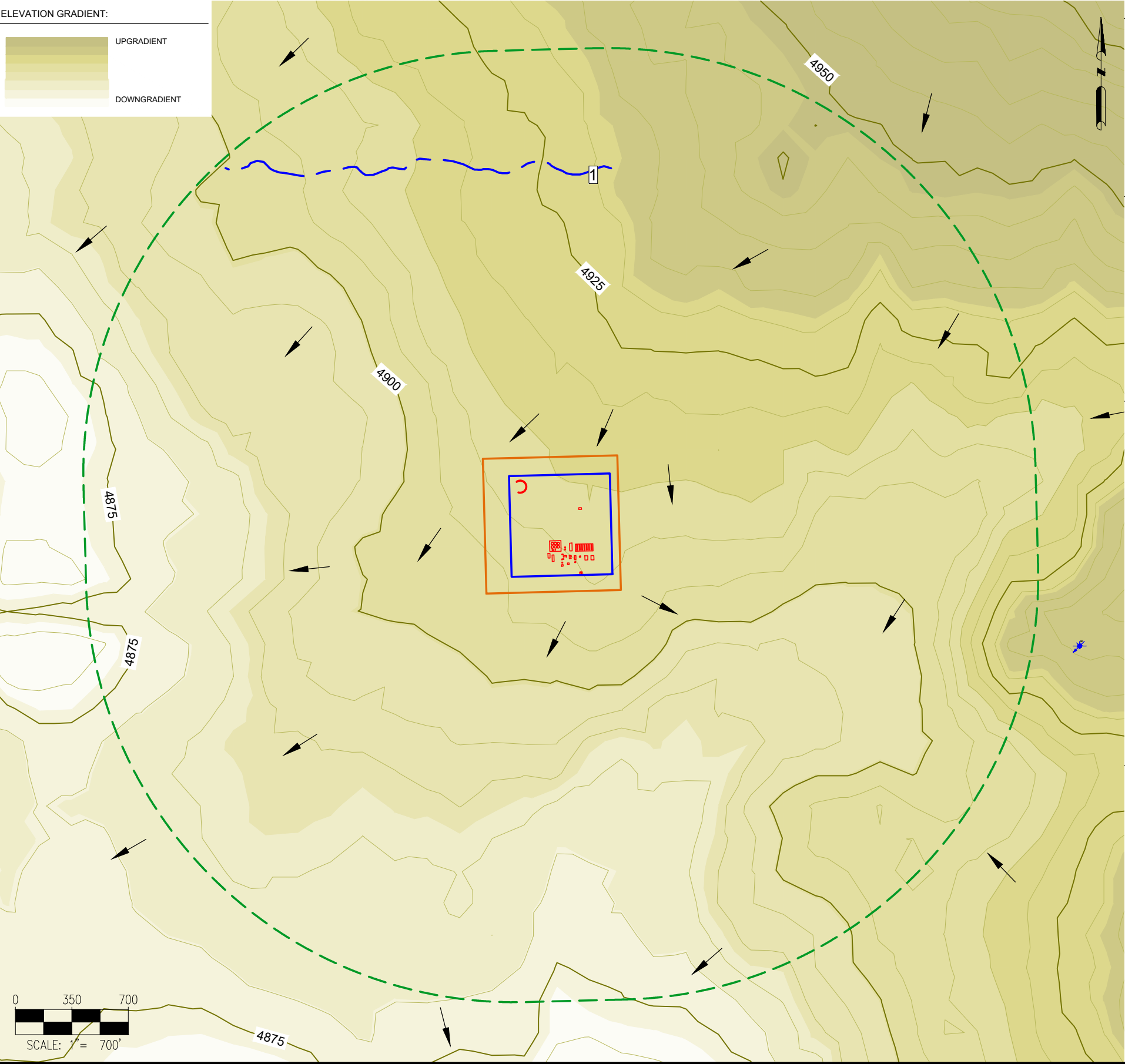
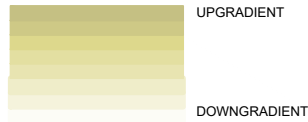


\\ags\projects\BOLC_B240005\PRODIGP-WOGLA\Cloudbreak_Pad_Hydrology\Map_2A.dwg

CLOUDBREAK PAD
HYDROLOGY MAP

ELEVATION GRADIENT:



LEGEND:

- OIL AND GAS LOCATION
- WORKING PAD SURFACE
- 2640' WORKING PAD SURFACE BUFFER
- STREAM / DITCH²
- DRAINAGE DIRECTION
- WATER WELL

NEAREST SURFACE WATER FEATURES:
(AS MEASURED FROM NEAREST)

	FROM WORKING PAD SURFACE	FROM OIL & GAS LOCATION	WATER FEATURE DESCRIPTION
SURFACE WATER OF THE STATE	+ 5280' SW	+ 5280' SW	FRESHWATER EMERGENT WETLAND
DOWNGRADIENT SURFACE WATER OF THE STATE	+ 5280' SW	+ 5280' SW	FRESHWATER EMERGENT WETLAND

WATER FEATURES:
(AS MEASURED FROM THE WORKING PAD SURFACE)

- 1 APPARENT STREAM² ±1859' N

NOTES:

- THERE ARE NO PUBLIC WATER SYSTEMS FACILITIES, PWS INTAKES <15 MILES DOWNSTREAM, OR RULE 411 BUFFER ZONES WITHIN THE 2,640' RADIUS.
- APPARENT FEATURE NOT PRESENT AND NO ORDINARY HIGH-WATER MARK WAS OBSERVED.

DATA SOURCE:
TOPO: GOOGLE
SURFACE WATER FEATURES: CDOT
WATER WELLS: COLORADO DWR

PUBLICLY AVAILABLE DATA SOURCES HAVE NOT
BEEN INDEPENDENTLY VERIFIED BY ASCENT.

DISCLAIMER:
THIS PLOT DOES NOT REPRESENT A MONUMENTED LAND
SURVEY AND SHOULD NOT BE RELIED UPON TO DETERMINE
BOUNDARY LINES, PROPERTY OWNERSHIP OR OTHER PROPERTY
INTERESTS. PARCEL LINES, IF DEPICTED HAVE NOT BEEN FIELD
VERIFIED AND MAY BE BASED UPON PUBLICLY AVAILABLE DATA
THAT ALSO HAS NOT BEEN INDEPENDENTLY VERIFIED.



ASCENT GEOMATICS SOLUTIONS
8620 WOLFF COURT
WESTMINSTER, CO 80031
(303) 928-7128

PREPARED FOR:



BISON IV OPERATING LLC
518 17TH STREET, SUITE 1800
DENVER, CO 80202
(720) 644-8997

SHEET NAME:
HYDROLOGY MAP

SURFACE LOCATION:

S 1/2 S 1/2 SECTION 22,
T8N, 62W, 6TH P.M.
WELD COUNTY, COLORADO

DRFT	CHK	DATE	DATE
DM	CSG	10/11/24	10/11/24

REV.	REVISION DESCRIPTION
0	ISSUED FOR PERMIT

DRAWING DATE:
10/11/24

DRAFTED BY:
DM

SHEET NO.
01 OF 01