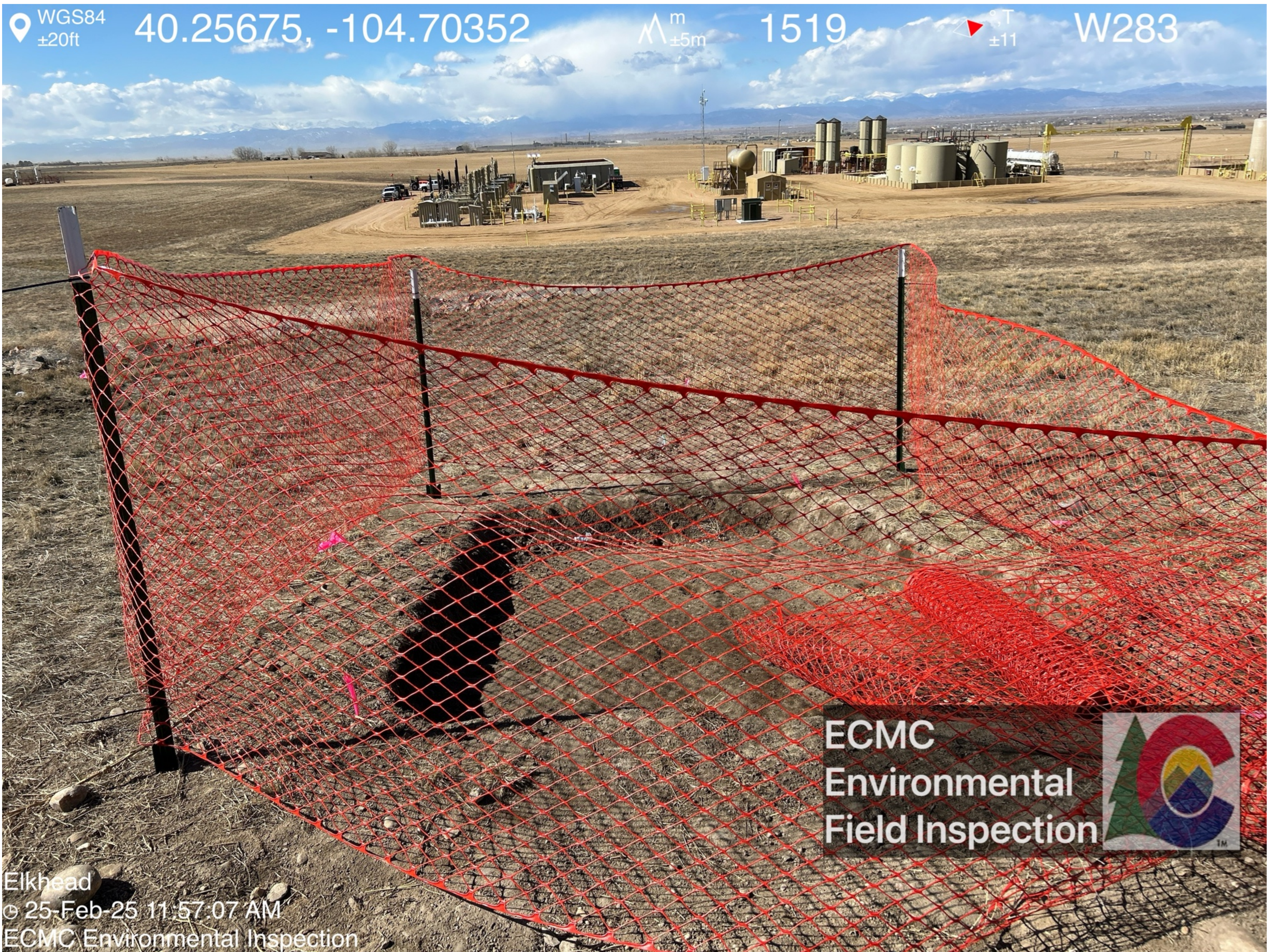
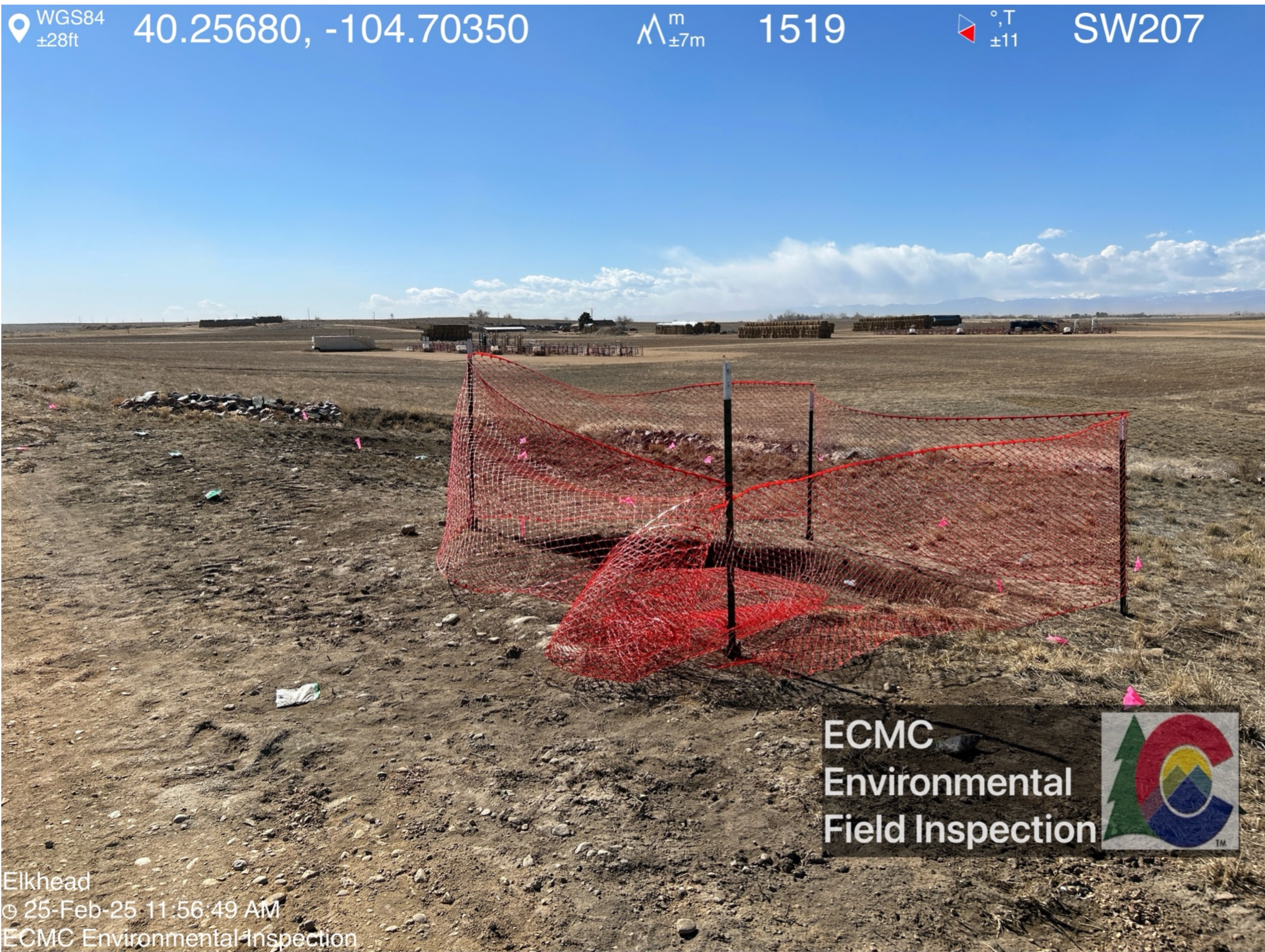


Orange construction fencing surrounds an excavation at the spill location.





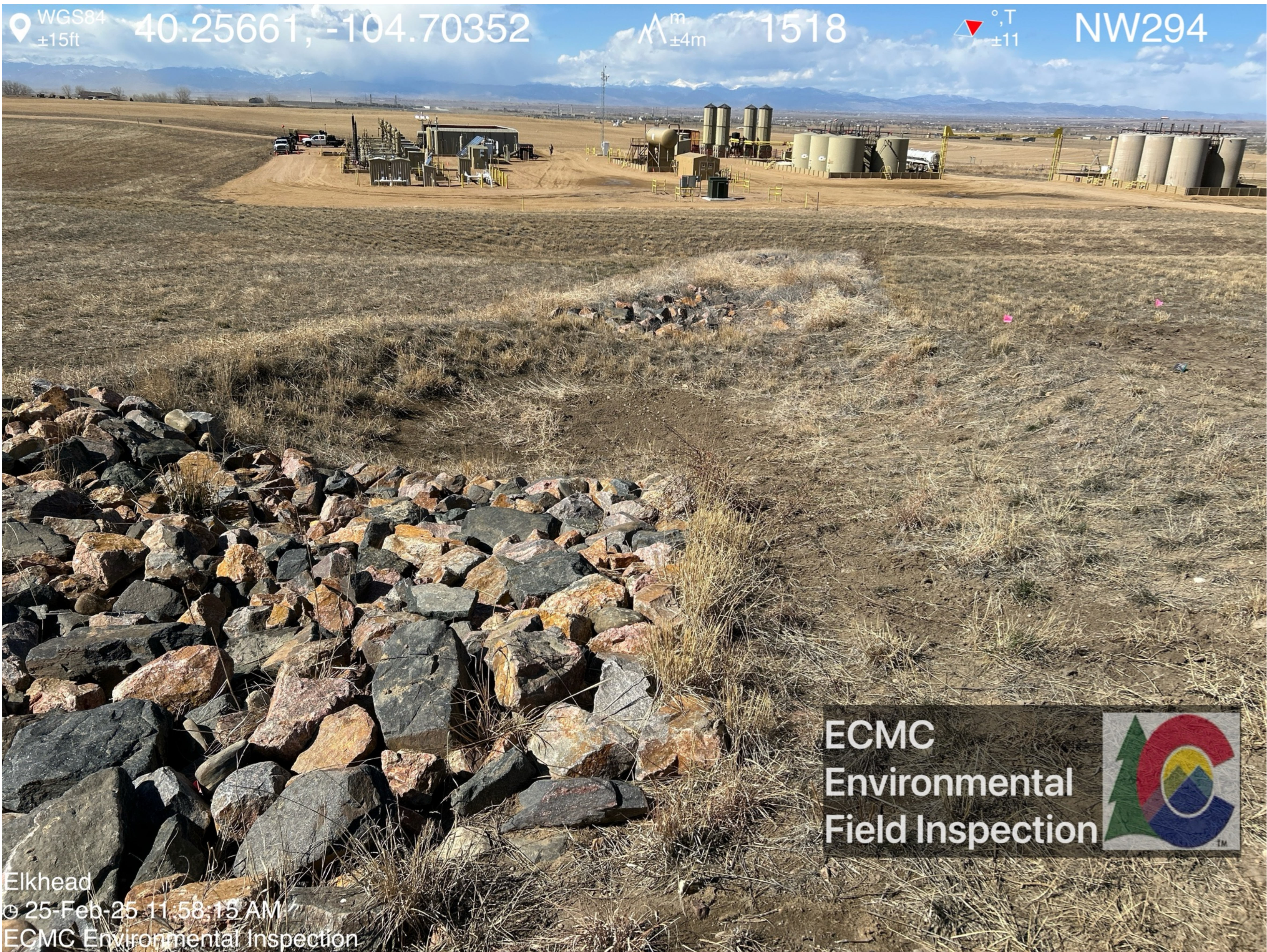


Pink flags are visible in an area of impacted vegetation and soil at the spill location. Multiple plastic bags containing soil are visible.

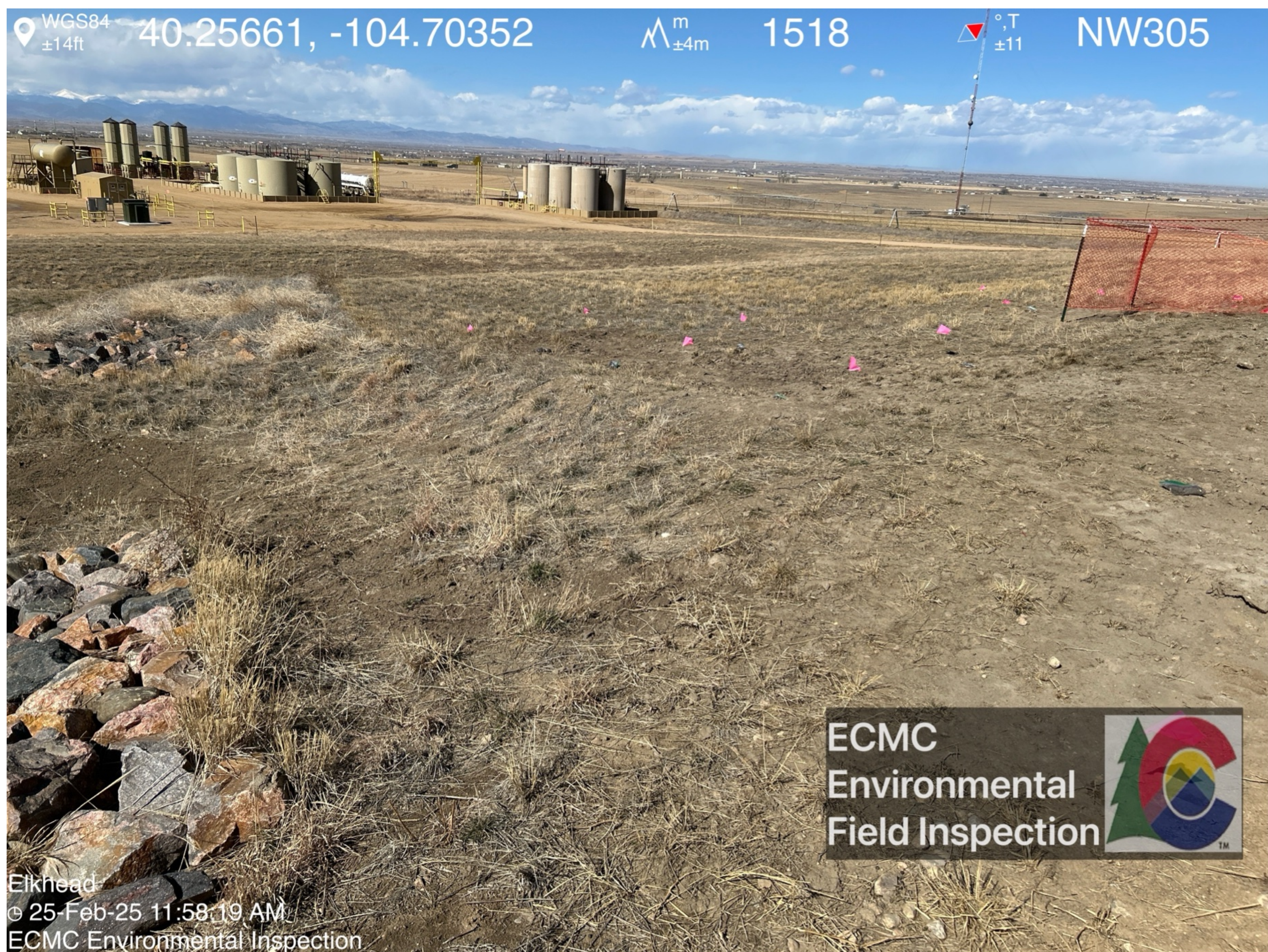




Stormwater drainage located immediately adjacent to the spill area.







Multiple plastic bags that appear to have been used for soil screening/sampling are visible in the spill area.













