

Monaco Engineering, Inc.

HYDROCARBON ANALYSIS LOG

COMPANY **KISSINGER PETROLEUM CORPORATION**

WELL **FORD #6-8**

COUNTY **BACA**

STATE **COLORADO**

LOCATION **C SE NW SEC 8 T34S R44W**

DATE LOGGED FROM **5/25/78**

TO

ELEVATION **K.B. 4127'**

DEPTH LOGGED FROM **1700'**

TO

ENGINEER **THOMAS HALLIDAY**

G.L. 4120'

LEGEND

ANHYDRITE DOLOMITE COAL
 ARKOSE LIMESTONE SHALE
 CHERT SANDSTONE

HYDROCARBON GASES

TOTAL GAS FROM CUTTINGS
 TOTAL GAS FROM HOT WIRE

ABBREVIATIONS

NB NEW BIT
 NR NO RETURNS
 CO CIRCULATE OUT
 DST DRILL STEM TEST

DRILLING RATE
 MINUTES PER 5 FT.

DEPTH

LITHOLOGY

OIL SHOW
POROSITY

CHROMATOGRAPH ANALYSIS

1 - METHANE 3 - PROPANE 4 - BUTANES
 2 - ETHANE 5 - PENTANES

REMARKS

MUD CHARACTERISTICS

WT - VIS - FILT - CK - PH - CL - OIL

10 20

DRLG 7 7/8" HOLE
 W/BIT 2" STC DTJ

WOB=30
 RPM=70
 PP=300

50

1800

50

1900

50

20

40

60

80

LAG=12 MIN/8 OZ. CARBIDE

SH BRN-RED SLTY SDY

9.2-32

JUN 5 1978

ANHY WH-CLR

COLO. OIL & GAS CONS. COMM.

SH AA

SS WH-RED FG SUG SLTY TT FRI

SH RED-GN SFT SLTY

SS AA ARG

SS WH VFG FRI TT

SH RED BRN SLTY TT SDY

SH AA SLTY



Monaco Engineering, Inc.

HYDROCARBON ANALYSIS LOG

COMPANY **KISSINGER PETROLEUM CORPORATION**

WELL **FORD #6-8**

COUNTY **BACA**

STATE **COLORADO**

LOCATION **C SE NW SEC 8 T34S R44W**

DATE LOGGED FROM **5/26/78**

TO

ELEVATION **K.B. 4127'**

DEPTH LOGGED FROM **1700'**

TO

ENGINEER **THOMAS HALLIDAY**

G.L. 4120'

LEGEND

✓✓✓ ANHYDRITE ▨ DOLOMITE ▩ COAL
 XXX ARKOSE ▤ LIMESTONE ▧ SHALE
 AAA CHERT ▤ SANDSTONE ▨

HYDROCARBON GASES

TOTAL GAS FROM CUTTINGS ———
 TOTAL GAS FROM HOT WIRE

CHROMATOGRAPH ANALYSIS

1 — METHANE 3 — PROPANE 4 — BUTANES
 2 — ETHANE 5 — PENTANES

ABBREVIATIONS

NB NEW BIT
 NR NO RETURNS
 CO CIRCULATE OUT
 DST DRILL STEM TEST

REMARKS,

MUD CHARACTERISTICS

WT-VIS-FILT-CK-PH-CL-OIL

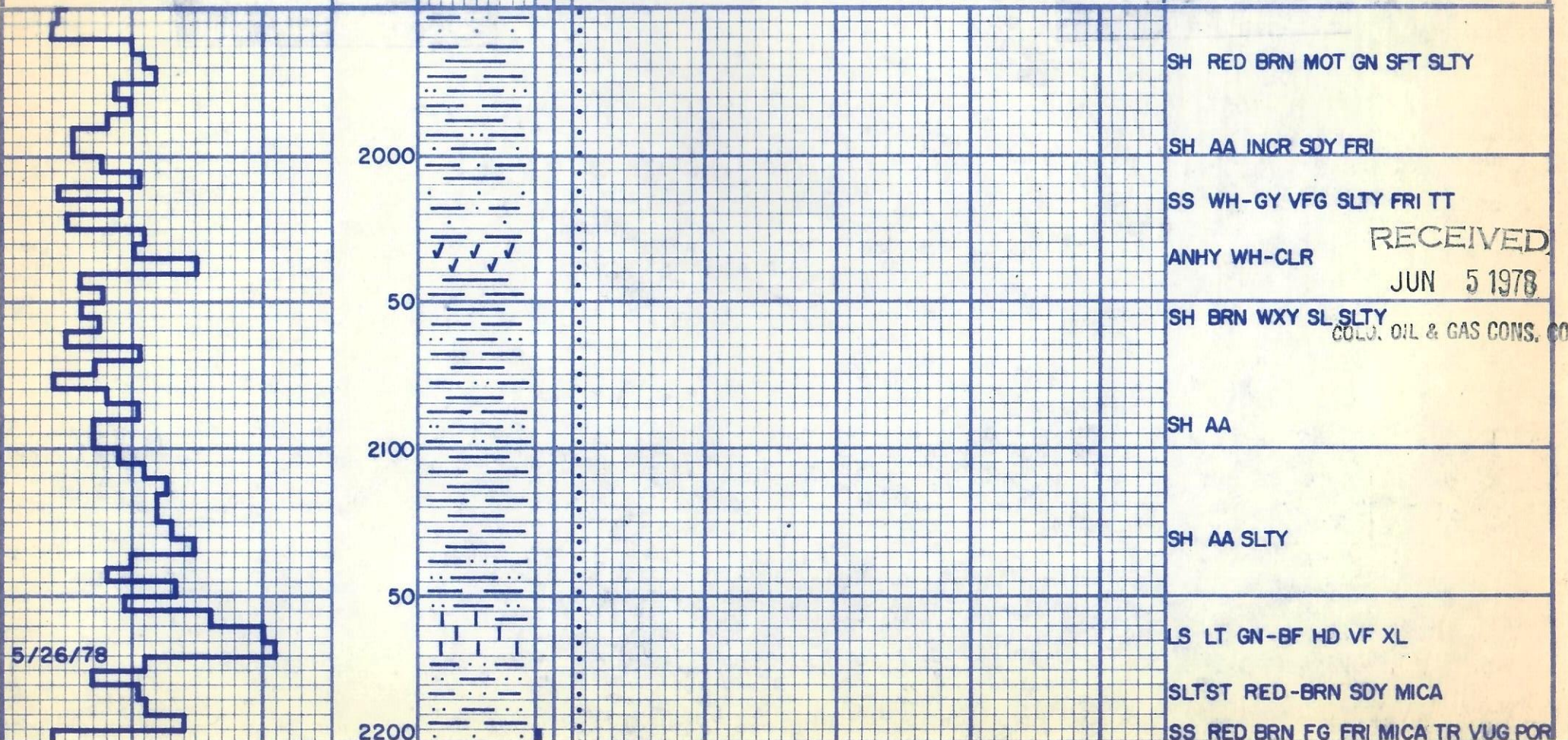
DRILLING RATE

MINUTES PER FT.

DEPTH

LITHOLOGY

POI
S
S
H
O
W



RECEIVED
JUN 5 1978

COLORADO OIL & GAS CONS. CO.

Monaco Engineering, Inc.

HYDROCARBON ANALYSIS LOG

COMPANY **KISSINGER PETROLEUM CORPORATION**

WELL **FORD #6-8**

COUNTY **BACA**

STATE **COLORADO**

LOCATION **C SE NW SEC 8 T34S R44W**

DATE LOGGED FROM **5/26/78**

TO

ELEVATION **K.B. 4127'**

DEPTH LOGGED FROM **1700'**

TO

ENGINEER **THOMAS HALLIDAY**

G.L. 4120'

LEGEND

√√√ ANHYDRITE ▨ DOLOMITE ▩ COAL
 XXX ARKOSE ▤ LIMESTONE ▧ SHALE
 AAA CHERT ••• SANDSTONE □

HYDROCARBON GASES

TOTAL GAS FROM CUTTINGS ———
 TOTAL GAS FROM HOT WIRE •••••

CHROMATOGRAPH ANALYSIS

1 — METHANE 3 — PROPANE 4 — BUTANES
 2 — ETHANE 5 — PENTANES

ABBREVIATIONS

NB NEW BIT
 NR NO RETURNS
 CO CIRCULATE OUT
 DST DRILL STEM TEST

REMARKS,

MUD CHARACTERISTICS

WT-VIS-FILT-CK-PH-CL-GR

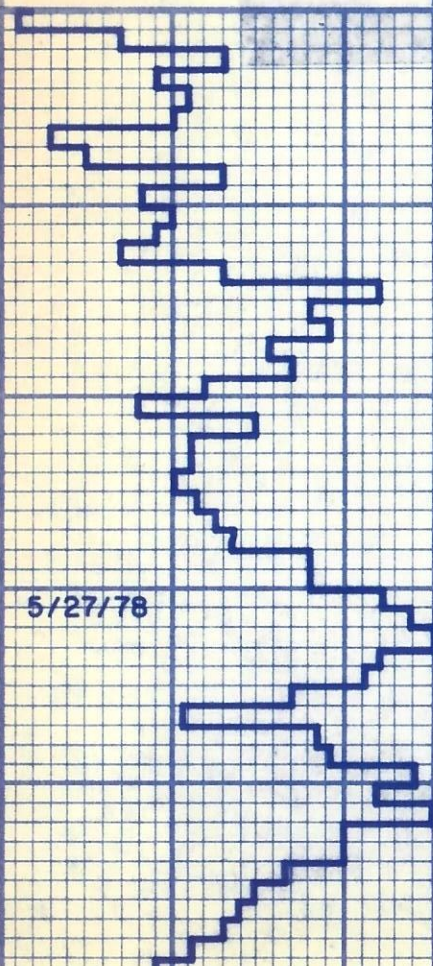
DRILLING RATE

MINUTES PER FT.

DEPTH

LITHOLOGY

OIL SHOW



2500

50

2600

50

2700

LS GY-GN HD VF XL JUN 5 1978

SH AA COLO. OIL & GAS CONS. C
SS WH-GY-BRN F-MG FRI ARG TT
SLTY

SS AA SLTY CALC

LS WH-GY HD VF XL

SH BRN V CALC SL CHKY WH
SH AA SDY

LS BF-GY HD VF XL SL FOS

LS AA SDY VUG POR

ANHY WH-CLR

SH BRN SLTY SDY FRI

5/27/78

Monaco Engineering, Inc.

HYDROCARBON ANALYSIS LOG

COMPANY **KISSINGER PETROLEUM CORPORATION**
 WELL **FORD #6-8**
 COUNTY **BACA** STATE **COLORADO**
 LOCATION **C SE NW SEC 8 T34S R44W**

DATE LOGGED FROM **5/26/78** TO

ELEVATION **K.B. 4127'**

DEPTH LOGGED FROM **1700'** TO

ENGINEER **THOMAS HALLIDAY** **G.L. 4120'**

LEGEND

VVV ANHYDRITE DOLOMITE COAL
 XXX ARKOSE LIMESTONE SHALE
 AAA CHERT SANDSTONE

HYDROCARBON GASES

TOTAL GAS FROM CUTTINGS _____
 TOTAL GAS FROM HOT WIRE

ABBREVIATIONS

NB NEW BIT
 NR NO RETURNS
 CO CIRCULATE OUT
 DST DRILL STEM TEST

DRILLING RATE

MINUTES PER FT.

DEPTH

LITHOLOGY

OIL SHOW
POROSITY

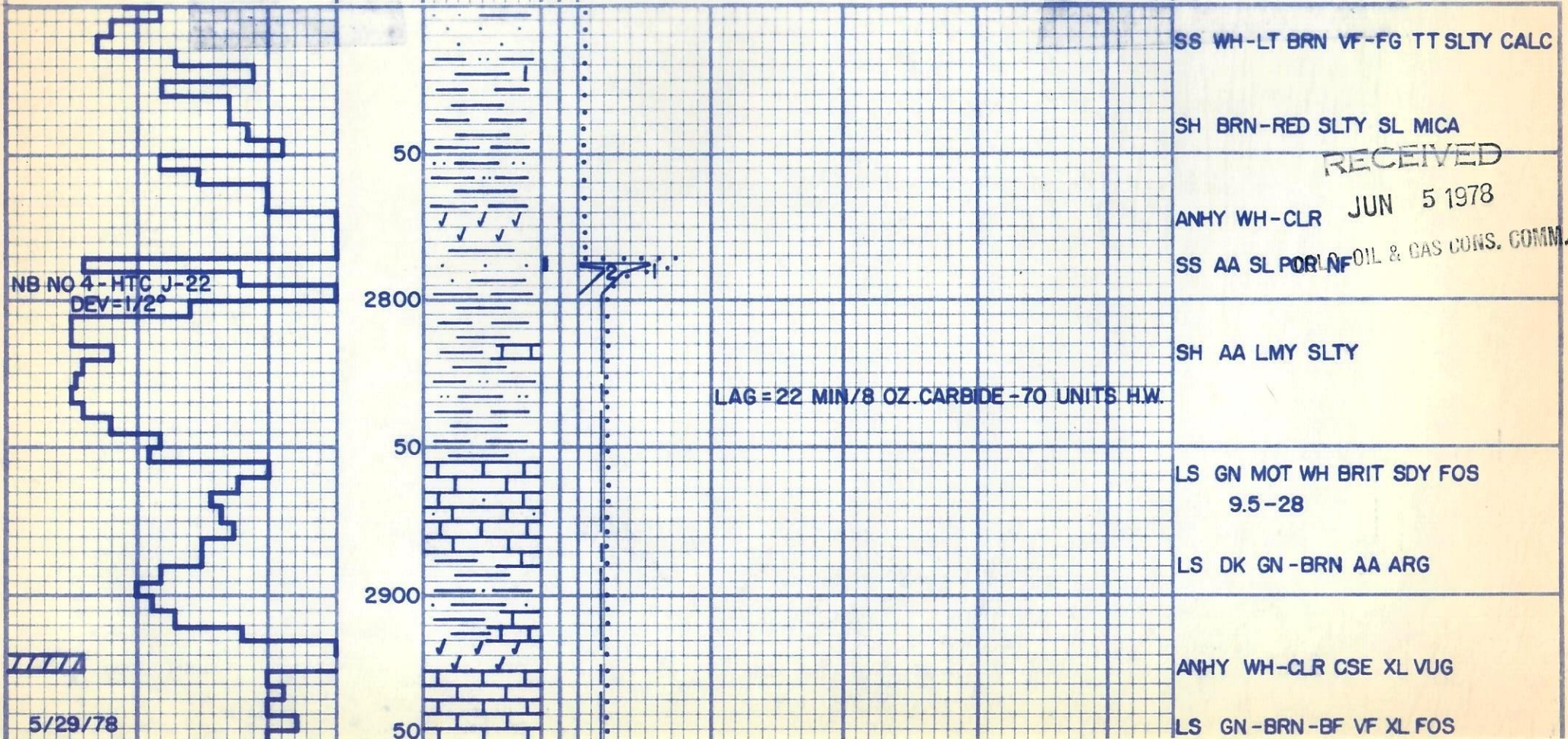
CHROMATOGRAPH ANALYSIS

1 - METHANE 3 - PROPANE 4 - BUTANES
 2 - ETHANE 5 - PENTANES

REMARKS

MUD CHARACTERISTICS

WT-VIS-FILT-CK-PH-CL-OIL



Monaco Engineering, Inc.

HYDROCARBON ANALYSIS LOG

COMPANY **KISSINGER PETROLEUM CORPORATION**

WELL **FORD #6-8**

COUNTY **BACA**

STATE **COLORADO**

LOCATION **C SE NW SEC 8 T34S R44W**

DATE LOGGED FROM **5/26/78**

TO

ELEVATION **K.B. 4127'**

DEPTH LOGGED FROM **1700'**

TO

ENGINEER **THOMAS HALLIDAY**

G.L. 4120'

LEGEND

√√√ ANHYDRITE ▨ DOLOMITE ▬ COAL
 XXX ARKOSE ▨ Limestone ▬ SHALE
 AAA CHERT ... SANDSTONE ▬

HYDROCARBON GASES

TOTAL GAS FROM CUTTINGS _____
 TOTAL GAS FROM HOT WIRE

CHROMATOGRAPH ANALYSIS

1 - METHANE 3 - PROPANE 4 - BUTANES
 2 - ETHANE 5 - PENTANES

ABBREVIATIONS

NB NEW BIT
 NR NO RETURNS
 CO CIRCULATE OUT
 DST DRILL STEM TEST

REMARKS,

MUD CHARACTERISTICS

WT-VIS-FILT-CK-PH-CL-OIL

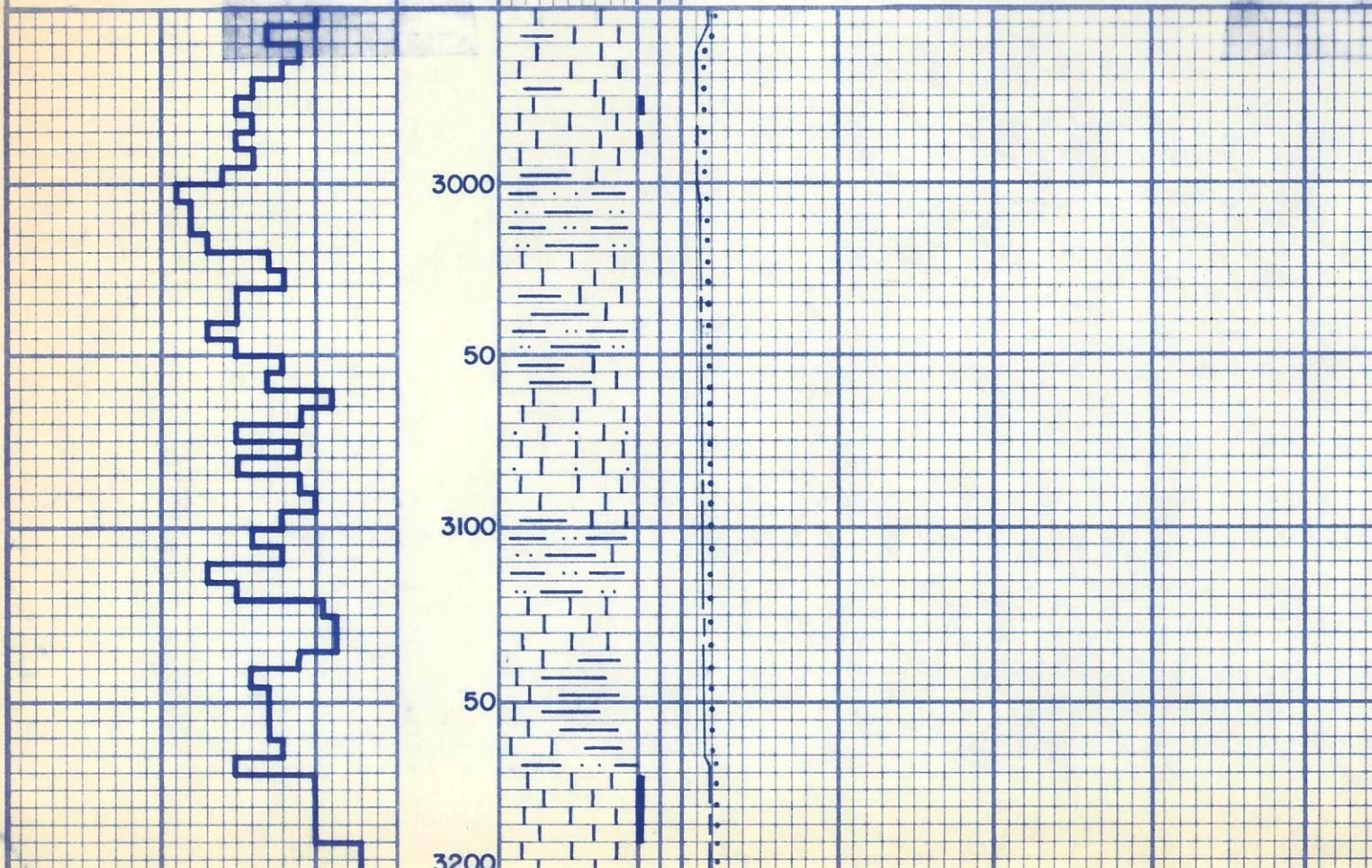
DRILLING RATE

MINUTES PER FT.

DEPTH

LITHOLOGY

POISSON'S RATIO



LS AA TR PP POR SL FOS TR OOC

RECEIVED

JUN 5 1978

SH BRN SLTY

LS GN MOT WH

COLO. OIL & GAS CONS. COMM.

SH AA LMY

LS GY-BF V SDY FRI ARG

SH AA

LS GY-GN BF MIC XL SL ARG

SH BRN SLTY V LMY

LS WH-GY FXL BRIT-HD POR SL OOL
 TR FOS SL YEL-DL BL FL NSTN CT

Monaco Engineering, Inc.

HYDROCARBON ANALYSIS LOG

COMPANY **KISSINGER PETROLEUM CORPORATION**

WELL **FORD #6-8**

COUNTY **BACA**

STATE **COLORADO**

LOCATION **C SE NW SEC 8 T34S R44W**

ELEVATION **K.B. 4127'**

ENGINEER **THOMAS HALLIDAY**

G.L. 4120'

DATE LOGGED FROM **5/26/78**

TO

DEPTH LOGGED FROM **1700'**

TO

LEGEND

VVV ANHYDRITE DOLOMITE COAL
 XXX ARKOSE LIMESTONE SHALE
 AAA CHERT SANDSTONE

HYDROCARBON GASES

TOTAL GAS FROM CUTTINGS _____
 TOTAL GAS FROM HOT WIRE

CHROMATOGRAPH ANALYSIS

1 - METHANE 3 - PROPANE 4 - BUTANES
 2 - ETHANE 5 - PENTANES

ABBREVIATIONS

NB NEW BIT
 NR NO RETURNS
 CO CIRCULATE OUT
 DST DRILL STEM TEST

REMARKS,

MUD CHARACTERISTICS

WT - VIS - FILT - CK - PH - CL - OIL

DRILLING RATE

MINUTES PER FT.

DEPTH

LITHOLOGY

OIL SHOW

WOB = 32
 RPM = 60
 PP = 400

5/30/78

NOTE SCALE CHANGE
 TO MIN. / FT. 5' AVG

50

3300

50

3400

50

LS BF-GY MICXL TR GN GLAUC OOL

LS BF-WH SL CHK POR ABNT FOS

SS GY VFG TT SLTY

LS WH-GY CHK NUM ANG EMBD GLAST

RECEIVED
JUN 5 1978

LS AA SDY

COLO. OIL & GAS CONS. COM

LS WH-BF-GY POR FOS

SS GY-WH VFG SUG FRI TT LMY

LS GY-BF HD MICXL

SS AA ARG

LS WH-GY VFXL SDY SL FRI OCC PP
 POR TR GLAUC GRNS EMBD

Monaco Engineering, Inc.

RECEIVED

JUN 5 1978

COMPANY **KISSINGER PETROLEUM CORPORATION**

WELL **FORD #6-8**

COUNTY **BACA**

STATE **COLORADO**

LOCATION **C SE NW SEC 8 T34S R44W**

ELEVATION **K.B. 4127'**

ENGINEER **THOMAS HALLIDAY**

G.L. 4120'

HYDROCARBON ANALYSIS LOG

DATE LOGGED FROM **5/26/78**

TO

DEPTH LOGGED FROM **1700'**

TO

LEGEND

vvv ANHYDRITE	DOLOMITE	COAL
xxx ARKOSE	LIMESTONE	SHALE
aaa CHERT	SANDSTONE	

HYDROCARBON GASES

TOTAL GAS FROM CUTTINGS ———
TOTAL GAS FROM HOT WIRE

CHROMATOGRAPH ANALYSIS

1 - METHANE 3 - PROPANE 4 - BUTANES
2 - ETHANE 5 - PENTANES

ABBREVIATIONS

NB NEW BIT
NR NO RETURNS
CO CIRCULATE OUT
DST DRILL STEM TEST

REMARKS,

MUD CHARACTERISTICS

WT-VIS-FILT-CK-PH-CL-OIL

DRILLING RATE

MINUTES PER FT.

DEPTH

LITHOLOGY

OIL SHOW

