



FLOWLINE ABANDONMENT FORM

CLIENT: Noble		SITE NAME: DR Joe CC06-09 Flowline					DATE: 1/15/2025	REM. PROJECT #: 33387	WEATHER: Sunny 40s		
SITE DIRECTIONS: CR50 & CR61, 0.9 E, 0.8 S, W into							JOB#:				
LEGALS AND LAT/LONG: 40.335959, -104.471372							TASMAN PERSONNEL: W.W E.C				
SOIL TYPES: Well Graded Sand - SW							SURFACE GRADIENT: Southwest				
SOIL SAMPLING							FACILITY INFRASTRUCTURE				
Date/Time	Soil Sample ID	PID (ppm)	Visual	Olfactory	Photo?	Grab or Lab Sample?	EQUIPMENT		Quantity		
							Above Ground Storage Tank (AST)				
01-16-2025 09:39	FL01-01@3'	0.6	No Staining	No Odor	Yes	Lab	Buried or Partially Buried Vessel				
01-16-2025 09:41	FL01-02@2'	1.1	No Staining	No Odor	Yes	Lab	Separator				
01-16-2025 09:44	FL01-03@2'	0.8	No Staining	No Odor	Yes	Lab	Emission Control Device (ECD)				
01-16-2025 09:46	FL01-04@2'	0.7	No Staining	No Odor	Yes	Lab	Dump Line				
01-16-2025 09:50	FL01-05@4'	6.9	No Staining	No Odor	Yes	Lab	Wellhead				
01-16-2025 09:55	FL01-06@4'	1.1	No Staining	No Odor	Yes	Lab	Flowline		1		
01-16-2025 10:01	FL01-07@2'	0.9	No Staining	No Odor	Yes	Grab	Other:				
01-16-2025 10:03	FL01-08@1'	1.1	No Staining	No Odor	Yes	Lab	Soil Loads Removed				
01-16-2025 10:07	FL01-09@3'	39.7	No Staining	Slight HC Odor	Yes	Lab	IMPACTED SOIL IDENTIFIED?				
01-16-2025 10:10	FL01R-W@4'	204.1	No Staining	Slight HC Odor	Yes	Lab	ESTIMATED VOLUME OF IMPACTS:				
01-16-2025 11:04	BKG01@0-6"	2.9	No Staining	No Odor	Yes	Lab	Date		Number	CY	
01-16-2025 11:11	BKG01@1'	1.2	No Staining	No Odor	Yes	Lab	1/16/2025		2	20	
01-16-2025 11:13	BKG01@2'	2.9	No Staining	No Odor	Yes	Lab					
01-16-2025 11:15	BKG01@2.5'	2.9	No Staining	No Odor	Yes	Lab					
01-16-2025 11:20	BKG01@3'	1.9	No Staining	No Odor	Yes	Lab					
01-16-2025 11:24	BKG01@4'	4.9	No Staining	No Odor	Yes	Lab	Total Removed		2	20	
01-16-2025 11:28	BKG01@5'	4.5	No Staining	No Odor	Yes	Lab	Disposal Facility: WM - Ault				
01-16-2025 11:32	BKG01@6'	6.6	No Staining	No Odor	Yes	Lab	Groundwater Recovery				
01-16-2025 11:38	BKG02@0-5"	1.8	No Staining	No Odor	Yes	Lab	DATE GW ENCOUNTERED:		DEPTH:		
01-16-2025 11:40	BKG02@1'	2.2	No Staining	No Odor	Yes	Lab	GROUNDWATER IN CONTACT WITH IMPACTED SOIL?				
01-16-2025 11:42	BKG02@2'	3.2	No Staining	No Odor	Yes	Lab					
01-16-2025 11:46	BKG02@2.5'	3.2	No Staining	No Odor	Yes	Lab	LNAPL OR SHEEN OBSERVED ON GW?				
GROUNDWATER SAMPLING							Date		BBLs		
Date/Time	Groundwater Sample ID	Depth Collected	Turbid?	Sheen?	Odor?	Photo?					
							Total Removed		0		
							Disposal Facility:				

[illegible]

Chevron Rockies Business Unit

Field Qualitative Criteria for ECMC Reporting Associated with the Discovery of Potentially Impacted Material

If answered **Yes** to any of the questions listed below, this may suggest the presence of potentially impacted materials as outlined in ECMC Rule 912. Out of an abundance of caution, a “Yes” response will be reported to the ECMC within 24 hours after discovery, regardless of laboratory results. **Immediately notify the RBU Remediation Team.** Include a copy of this Field Qualitative Spill Criteria Checklist in the field Report.

Please answer the following questions when on-site:

1. Is there visible petroleum hydrocarbon staining in the soil? No
2. Does the soil sample from the stained area have a petroleum odor? No
3. Is there a petroleum hydrocarbon sheen on the nearby surface water? No
4. Does there appear to be a sheen of the surface of accumulated groundwater or seeps within the excavation indicative of petroleum? No
5. Is stained soil in contact with groundwater? No

Please Include relevant photos of the site conditions for items 1-5.

Location name: DR Joe CC06-09 Flowline

Please Circle Facility Type: Flowline

GENERAL OBSERVATION FORM

Site Area/AOC: DR Joe CC06-09 Flowline Client: Noble

Daily Forecast/Weather: Sunny 40s Personnel: W.W E.C



Task/Location Description: Flowline removal and ABIP



Time	Description
10:21	01/15/25 Onsite completed JSA
	Crew is currently removing facility of DR Joe TB
	Hydrovaccing potholes looking for crossing lines found none
	During pot holing coating was spotted alerted team leads for CABI
	Sampling will resume tomorrow
	01/16/25 returned to site after asbestos sample tested ND
	Scope of work sample removed Flowline
	Flowrise riser sample was sampled during the facility decommissioning on 01/15/25 (32743)
	Eagle/entrada completed well head cut and cap
	Scope of work changed:
	Flowline from FL01-05 to FL01-06 was pulled with rep on site due to line crossing
	At the direction of chevron rep due to elevated PIDs for FL01-09 and FL01R-W we will excavate areas to find clean
	Excavations for both will be expanded by 2 ft in every direction and 2 ft bgs
13:19	Waiting for trucks to arrive
	Lab samples due to directional change/proposed sampling locations
	FL01-01,02,03,04,05,06,08
	Field screen samples: FL01-07
	Nomenclature for excavations: SS01-4-FL01R-W@4' for walls, FS01-FL01R-W@6'for base sample
	Nomenclature for excavations: SS01-4-FL01-09@2.5' for walls, FS01-FL01-09@5' for base sample
	FL01R-W excavation 16x16.5 6ft bgs/ FL01-09 14x15 5 ft bgs
	10 yards in 10 yard out from buffalo to Alt landfill for both excavations 20 yards total
	Soil sample locations for both excavations still showed high PIDs
	Made contact with chevron rep and was directed to backfill excavations remediation excavation is still needed
	Schedule is TBD excavations for both FL01-09 and FL01R-W were backfilled
	Flowline was fully removed
	Backgrounds sample depths collected via trackhoe @0-6",1,2,2.5,3,4,5,6 ft bgs
16:21	Left site


Need a photo log?







Need another General Observation Form?

							
Equipment ID: FL01-01 @3'		Equipment Type: Flowline		Equipment ID: FL01-02 @2'		Equipment Type: Flowline	
Material: Steel	Volume:	Contents: Oil/Gas/Water		Material: Steel	Volume:	Contents: Oil/Gas/Water	
Notes/Conditions:				Notes/Conditions:			

											
Equipment ID: FL01-03 @ 2'		Equipment Type: Flowline		Equipment ID: FL01-05 @ 4'		Equipment Type: Flowline					
Material: Steel		Volume:		Contents: Oil/Gas/Water		Material:		Volume:		Contents: Oil/Gas/Water	
Notes/Conditions:						Notes/Conditions:					

					
Equipment ID: FL01-06 @ 4'		Equipment Type: Flowline			
Material: Steel	Volume:	Contents:		Equipment ID: FL01-07 @ 2'	
				Equipment Type: Flowline	
Material: Steel		Volume:	Contents: Oil/Gas/Water		
Notes/Conditions:			Notes/Conditions:		



					
Equipment ID: FL01-08 @1'		Equipment Type: Flowline			
Material: Steel	Volume:	Contents: Oil/Gas/Water			
Notes/Conditions:					
Equipment ID: FL01-09 @3'		Equipment Type: Flowline			
Material: Steel	Volume:	Contents: Oil/Gas/Water			
Notes/Conditions:					

					
Equipment ID: FL01R-W@4'		Equipment Type: Flowline			
Material: Steel	Volume:	Contents:	Equipment ID: FL01-04@2'		Equipment Type: Flowline
			Material: Steel	Volume:	Contents: Oil/Gas/Water
Notes/Conditions:			Notes/Conditions:		

Photographic Log

							
Equipment ID: BKG01		Equipment Type:		Equipment ID: BKG02		Equipment Type:	
Material:	Volume:	Contents:		Material:	Volume:	Contents:	
Notes/Conditions:				Notes/Conditions:			

							
Equipment ID: BKG03		Equipment Type:		Equipment ID: FL01R-W Excavation		Equipment Type: Flowline	
Material:	Volume:	Contents:		Material: Steel	Volume:	Contents: Oil/Gas/Water	
Notes/Conditions:				Notes/Conditions: Center circle SS-03-FL01R-W@4', Left circle is SS-04-FL01R-W@4' Right Circle is SS02-FL01R-W@4'			

									
Equipment ID: FL01R-W excavation		Equipment Type:		Equipment ID:		Equipment Type:			
Material:		Volume:		Material:		Volume:		Contents:	
Notes/Conditions: Excavation facing east, bottom circle is FS01-FL01R-W@6', left SS01-FL01R-W@4', Right SS04-FL01R-W@4'					Notes/Conditions: FL01R excavations facing north				

Photographic Log



Equipment ID:		Equipment Type:	
Material:	Volume:	Contents:	
Notes/Conditions: FL01-09 excavations facing south, bottom circled is FS01-FL01-09@5', Left circle is SS04-FL01-09@2.5', Right circle is SS03-FL01-09@2.5'			



Equipment ID:		Equipment Type:	
Material:	Volume:	Contents:	
Notes/Conditions: FL01-09 excavations facing west, left circle is SS02-FL01-09@2.5' right circle is SS01-FL01-09@2.5'			


					
Equipment ID:		Equipment Type:	Equipment ID:		Equipment Type:
Material:	Volume:	Contents:	Material:	Volume:	Contents:
Notes/Conditions: FL01-09 excavation facing north circle SS01-FL01-09 @5'			Notes/Conditions:		

TABLE 1
FIELD DATA SUMMARY TABLE
NOBLE ENERGY, INC. - 100322
FORMER DR. JOE CC 6-9 FLOWLINE, WELD COUNTY, COLORADO
REM # 33387

Sample ID	Sample Date	Depth (ft. bgs)	GPS Data Latitude/Longitude		PDOP Value	VOC Concentration (ppm)
FL01R-W@4'	01/16/2025	4	40.338937	-104.472862	0.8	204.1
FL01-01@3'	01/16/2025	3	40.336208	-104.471507	0.8	0.6
FL01-02@2'	01/16/2025	2	40.336356	-104.471653	0.9	1.1
FL01-03@2'	01/16/2025	2	40.336564	-104.471872	0.8	0.8
FL01-04@2'	01/16/2025	2	40.336868	-104.472098	0.9	0.7
FL01-05@4'	01/16/2025	4	40.337188	-104.472294	0.9	6.9
FL01-06@4'	01/16/2025	4	40.337593	-104.472432	0.8	1.1
FL01-07@2'	01/16/2025	2	40.337894	-104.472549	0.9	0.9
FL01-08@1'	01/16/2025	1	40.338079	-104.472601	0.8	1.1
FL01-09@3'	01/16/2025	3	40.338458	-104.472739	1.1	39.7
SS01-FL01-09@2.5'	01/16/2025	2.5	40.338496	-104.472747	0.8	10.1
SS02-FL01-09@2.5'	01/16/2025	2.5	40.338473	-104.472760	0.8	4.1
SS03-FL01-09@2.5'	01/16/2025	2.5	40.338464	-104.472742	0.8	114.9
SS04-FL01-09@2.5'	01/16/2025	2.5	40.338477	-104.472730	0.8	3.4
FS01-FL01-09@5'	01/16/2025	5	40.338476	-104.472755	0.8	37.0
SS01-FL01R-W@4'	01/16/2025	4	40.338964	-104.472864	1.2	20.8
SS02-FL01R-W@4'	01/16/2025	4	40.338951	-104.472888	1.2	2.2
SS03-FL01R-W@4'	01/16/2025	4	40.338928	-104.472863	0.9	90.5
SS04-FL01R-W@4'	01/16/2025	4	40.338948	-104.472841	1.0	20.2
FS01-FL01R-W@6'	01/16/2025	6	40.338948	-104.472871	0.9	104.7
BKG01@0-6"	01/16/2025	0-0.5	40.335992	-104.471648	0.7	2.9
BKG01@1'	01/16/2025	1	40.335992	-104.471648	0.7	1.2
BKG01@2'	01/16/2025	2	40.335992	-104.471648	0.7	2.9
BKG01@2.5'	01/16/2025	2.5	40.335992	-104.471648	0.7	2.9
BKG01@3'	01/16/2025	3	40.335992	-104.471648	0.7	1.9
BKG01@4'	01/16/2025	4	40.335992	-104.471648	0.7	4.9
BKG01@5'	01/16/2025	5	40.335992	-104.471648	0.7	4.5
BKG01@6'	01/16/2025	6	40.335992	-104.471648	0.7	6.6
BKG02@0-6"	01/16/2025	0-0.5	40.336446	-104.472047	0.8	1.8
BKG02@1'	01/16/2025	1	40.336446	-104.472047	0.8	2.2
BKG02@2'	01/16/2025	2	40.336446	-104.472047	0.8	3.2
BKG02@2.5'	01/16/2025	2.5	40.336446	-104.472047	0.8	3.2
BKG02@3'	01/16/2025	3	40.336446	-104.472047	0.8	3.6
BKG02@4'	01/16/2025	4	40.336446	-104.472047	0.8	3.6
BKG02@5'	01/16/2025	5	40.336446	-104.472047	0.8	2.5
BKG02@6'	01/16/2025	6	40.336446	-104.472047	0.8	2.4
BKG03@0-6"	01/16/2025	0-0.5	40.338919	-104.473118	0.8	3.8
BKG03@1'	01/16/2025	1	40.338919	-104.473118	0.8	3.0
BKG03@2'	01/16/2025	2	40.338919	-104.473118	0.8	2.5
BKG03@2.5'	01/16/2025	2.5	40.338919	-104.473118	0.8	2.5
BKG03@3'	01/16/2025	3	40.338919	-104.473118	0.8	2.8
BKG03@4'	01/16/2025	4	40.338919	-104.473118	0.8	6.6
BKG03@5'	01/16/2025	5	40.338919	-104.473118	0.8	5.8
BKG03@6'	01/16/2025	6	40.338919	-104.473118	0.8	4.4

Notes:

- Global Positioning System (GPS) data is provided in decimal degrees using North American Datum (NAD) 83 UTM Zone 13 North.
- Volatile organic compound (VOC) concentrations are measured in the field using a photoionization detector (PID).

PDOP = Position Dilution of Precision

ppm = Parts per million

ft. = Feet

bgs = Below ground surface

TABLE 2
SUMMARY OF VOLATILE ORGANIC SOIL CHEMISTRY DATA
NOBLE ENERGY, INC. - 100322
FORMER DR. JOE CC 6-9 FLOWLINE, WELD COUNTY, COLORADO
REM # 33387

Sample ID	Sample Date	Depth (ft. bgs)	Benzene (mg/kg)	Toluene (mg/kg)	Ethyl-Benzene (mg/kg)	Xylenes (mg/kg)	1,2,4- Trimethyl- Benzene (mg/kg)	1,3,5- Trimethyl- Benzene (mg/kg)	Naphthalene (mg/kg)	TPH (mg/kg)	TPH GRO (mg/kg)	TPH DRO (mg/kg)	TPH ORO (mg/kg)
ECMC Table 915-1 Limits (Residential SSL)			1.2	490	5.8	58	30	27	2	500	500**		
ECMC Table 915-1 Limits (Protection of Groundwater SSL)			0.0026	0.69	0.78	9.9	0.0081	0.0087	0.0038	500	500**		
FL01R-W@4'	01/16/2025	4	<0.0020	<0.0050	<0.0050	0.018	0.012	0.0051	0.10	571	0.51	400	170
FL01-01@3'	01/16/2025	3	<0.0020	<0.0050	<0.0050	<0.010	<0.0050	<0.0050	0.011	95	<0.50	95	<50
FL01-02@2'	01/16/2025	2	<0.0020	<0.0050	<0.0050	<0.010	<0.0050	<0.0050	<0.0038	<50	<0.50	<50	<50
FL01-03@2'	01/16/2025	2	<0.0020	<0.0050	<0.0050	<0.010	<0.0050	<0.0050	0.092	690	<0.50	460	230
FL01-04@2'	01/16/2025	2	<0.0020	<0.0050	<0.0050	<0.010	<0.0050	<0.0050	<0.0038	<50	<0.50	<50	<50
FL01-05@4'	01/16/2025	4	<0.0020	<0.0050	<0.0050	<0.010	<0.0050	<0.0050	0.10	68	<0.50	68	<50
FL01-06@4'	01/16/2025	4	<0.0020	<0.0050	<0.0050	<0.010	<0.0050	<0.0050	0.017	<50	<0.50	<50	<50
FL01-08@1'	01/16/2025	1	<0.0020	<0.0050	<0.0050	<0.010	<0.0050	<0.0050	0.0091	309	<0.50	220	89
FL01-09@3'	01/16/2025	3	1.9	51	15	130	42	18	1.5	6,500	3,600	2,900	<50
SS01-FL01-09@2.5'	01/16/2025	2.5	<0.0020	<0.0050	<0.0050	<0.010	<0.0050	<0.0050	<0.0038	<50	<0.50	<50	<50
SS02-FL01-09@2.5'	01/16/2025	2.5	<0.0020	<0.0050	<0.0050	<0.010	<0.0050	<0.0050	<0.0038	<50	<0.50	<50	<50
SS03-FL01-09@2.5'	01/16/2025	2.5	<0.0020	<0.0050	<0.0050	<0.010	0.042	0.013	<0.0038	0.60	0.60	<50	<50
SS04-FL01-09@2.5'	01/16/2025	2.5	<0.0020	<0.0050	<0.0050	<0.010	<0.0050	<0.0050	<0.0038	<50	<0.50	<50	<50
FS01-FL01-09@5'	01/16/2025	5	<0.0020	<0.0050	<0.0050	<0.010	<0.0050	<0.0050	<0.0038	<50	<0.50	<50	<50
SS01-FL01R-W@4'	01/16/2025	4	<0.0020	<0.0050	<0.0050	<0.010	<0.0050	<0.0050	<0.0038	170	<0.50	170	<50
SS02-FL01R-W@4'	01/16/2025	4	<0.0020	<0.0050	<0.0050	<0.010	<0.0050	<0.0050	<0.0038	<50	<0.50	<50	<50
SS03-FL01R-W@4'	01/16/2025	4	<0.0020	<0.0050	<0.0050	<0.010	<0.0050	<0.0050	<0.0038	68	<0.50	68	<50
SS04-FL01R-W@4'	01/16/2025	4	<0.0020	<0.0050	<0.0050	<0.010	<0.0050	<0.0050	<0.0038	<50	<0.50	<50	<50
FS01-FL01R-W@6'	01/16/2025	6	<0.0020	<0.0050	<0.0050	<0.010	<0.0050	<0.0050	<0.0038	<50	<0.50	<50	<50

Notes:

1. **Bold** values exceed the ECMC Table 915-1 limit(s).
2. Red & blue highlighted soil analytical values indicate an exceedance of the referenced soil screening level (SSL).
3. * Indicates laboratory minimum detection limit in excess of SSL.
4. ** Summation of GRO+DRO+ORO must be less than 500 mg/kg.

ECMC = Energy & Carbon Management Commission

(<) = Analytical result is less than the indicated laboratory reporting limit.

TPH-GRO = Total petroleum hydrocarbons - gasoline range organics

TPH-DRO = Total petroleum hydrocarbons - diesel range organics

TPH-ORO = Total petroleum hydrocarbons - oil range organics

mg/kg = Milligrams per kilogram

ft. = Feet

bgs = Below ground surface

= Source material characterization sample, excavated and transported off site for disposal.

TABLE 3
SUMMARY OF POLYCYCLIC AROMATIC HYDROCARBON SOIL CHEMISTRY DATA
NOBLE ENERGY, INC. - 100322
FORMER DR. JOE CC 6-9 FLOWLINE, WELD COUNTY, COLORADO
REM # 33387

Sample ID	Sample Date	Depth (ft. bgs)	Acenaphthene (mg/kg)	Anthracene (mg/kg)	Benzo (a) Anthracene (mg/kg)	Benzo (a) Pyrene (mg/kg)	Benzo (b) Fluoranthene (mg/kg)	Benzo (k) Fluoranthene (mg/kg)	Chrysene (mg/kg)	Dibenzo (a,h) Anthracene (mg/kg)	Fluoranthene (mg/kg)	Fluorene (mg/kg)	Indeno (1,2,3- cd) Pyrene (mg/kg)	Pyrene (mg/kg)	1-Methyl - Naphthalene (mg/kg)	2-Methyl- Naphthalene (mg/kg)
ECMC Table 915-1 Limits (Residential SSL)			360	1,800	1.1	0.11	1.1	11	110	0.11	240	240	1.1	180	18	24
ECMC Table 915-1 Limits (Protection of Groundwater SSL)			0.55	5.8	0.011	0.24	0.3	2.9	9	0.096	8.9	0.54	0.98	1.3	0.006	0.019
FL01R-W@4'	01/16/2025	4	<0.00500	<0.00500	<0.00500	<0.00500	<0.00500	<0.00500	<0.00500	<0.00500	<0.00500	<0.00500	<0.00500	<0.00500	<0.00500	<0.00500
FL01-01@3'	01/16/2025	3	0.209	0.462	0.889	0.391	0.974	0.248	0.737	<0.00500	1.52	0.214	0.434	1.18	0.0117	0.0188
FL01-02@2'	01/16/2025	2	<0.00500	<0.00500	<0.00500	<0.00500	<0.00500	<0.00500	<0.00500	<0.00500	<0.00500	<0.00500	<0.00500	<0.00500	<0.00500	<0.00500
FL01-03@2'	01/16/2025	2	<0.00500	<0.00500	<0.00500	<0.00500	<0.00500	<0.00500	<0.00500	<0.00500	<0.00500	<0.00500	<0.00500	<0.00500	<0.00500	<0.00500
FL01-04@2'	01/16/2025	2	<0.00500	<0.00500	<0.00500	<0.00500	<0.00500	<0.00500	<0.00500	<0.00500	<0.00500	<0.00500	<0.00500	<0.00500	<0.00500	<0.00500
FL01-05@4'	01/16/2025	4	<0.00500	<0.00500	<0.00500	<0.00500	<0.00500	<0.00500	<0.00500	<0.00500	<0.00500	<0.00500	<0.00500	<0.00500	<0.00500	<0.00500
FL01-06@4'	01/16/2025	4	<0.00500	<0.00500	<0.00500	<0.00500	<0.00500	<0.00500	<0.00500	<0.00500	<0.00500	<0.00500	<0.00500	<0.00500	<0.00500	<0.00500
FL01-08@1'	01/16/2025	1	<0.00500	<0.00500	<0.00500	<0.00500	<0.00500	<0.00500	<0.00500	<0.00500	<0.00500	<0.00500	<0.00500	<0.00500	<0.00500	<0.00500
FL01-09@3'	01/16/2025	3	<0.00500	<0.00500	<0.00500	<0.00500	<0.00500	<0.00500	<0.00500	<0.00500	<0.00500	<0.00500	<0.00500	<0.00500	<0.00500	<0.00500
SS01-FL01-09@2.5'	01/16/2025	2.5	<0.00500	<0.00500	<0.00500	<0.00500	<0.00500	<0.00500	<0.00500	<0.00500	<0.00500	<0.00500	<0.00500	<0.00500	<0.00500	<0.00500
SS02-FL01-09@2.5'	01/16/2025	2.5	<0.00500	<0.00500	<0.00500	<0.00500	<0.00500	<0.00500	<0.00500	<0.00500	<0.00500	<0.00500	<0.00500	<0.00500	<0.00500	<0.00500
SS03-FL01-09@2.5'	01/16/2025	2.5	<0.00500	<0.00500	<0.00500	<0.00500	<0.00500	<0.00500	<0.00500	<0.00500	<0.00500	<0.00500	<0.00500	<0.00500	<0.00500	<0.00500
SS04-FL01-09@2.5'	01/16/2025	2.5	<0.00500	<0.00500	<0.00500	<0.00500	<0.00500	<0.00500	<0.00500	<0.00500	<0.00500	<0.00500	<0.00500	<0.00500	<0.00500	<0.00500
FS01-FL01-09@5'	01/16/2025	5	<0.00500	<0.00500	<0.00500	<0.00500	<0.00500	<0.00500	<0.00500	<0.00500	<0.00500	<0.00500	<0.00500	<0.00500	<0.00500	<0.00500
SS01-FL01R-W@4'	01/16/2025	4	<0.00500	<0.00500	<0.00500	<0.00500	<0.00500	<0.00500	<0.00500	<0.00500	<0.00500	<0.00500	<0.00500	<0.00500	<0.00500	<0.00500
SS02-FL01R-W@4'	01/16/2025	4	<0.00500	<0.00500	<0.00500	<0.00500	<0.00500	<0.00500	<0.00500	<0.00500	<0.00500	<0.00500	<0.00500	<0.00500	<0.00500	<0.00500
SS03-FL01R-W@4'	01/16/2025	4	<0.00500	<0.00500	<0.00500	<0.00500	<0.00500	<0.00500	<0.00500	<0.00500	<0.00500	<0.00500	<0.00500	<0.00500	<0.00500	<0.00500
SS04-FL01R-W@4'	01/16/2025	4	<0.00500	<0.00500	<0.00500	<0.00500	<0.00500	<0.00500	<0.00500	<0.00500	<0.00500	<0.00500	<0.00500	<0.00500	<0.00500	<0.00500
FS01-FL01R-W@6'	01/16/2025	6	<0.00500	<0.00500	<0.00500	<0.00500	<0.00500	<0.00500	<0.00500	<0.00500	<0.00500	<0.00500	<0.00500	<0.00500	<0.00500	<0.00500

Notes:

1. **Bold** values exceed the ECMC Table 915-1 limit(s).

2. Red & blue highlighted soil analytical values indicate an exceedance of the referenced soil screening level (SSL).

3. * Indicates laboratory minimum detection limit in excess of SSL.

ECMC = Colorado Energy & Carbon Management Commission

(<) = Analytical result is less than the indicated laboratory reporting limit.

ft. = Feet

bgs = Below ground surface

mg/kg = Milligrams per kilogram

= Source material characterization sample, excavated and transported off site for disposal.

TABLE 4
SUMMARY OF SOIL SUITABILITY FOR RECLAMATION
NOBLE ENERGY, INC. - 100322
FORMER DR. JOE CC 6-9 FLOWLINE, WELD COUNTY, COLORADO
REM # 33387

Sample ID	Sample Date	Depth (ft. bgs)	pH (Standard Units)	EC (mmhos/cm)	SAR (Standard Units)	Boron (mg/L)
ECMC Table 915-1 Soil Suitability Limits			6 - 8.3	<4	<6	2
FL01R-W@4'	01/16/2025	4	7.85	0.552	2.30	<2.00
FL01-01@3'	01/16/2025	3	7.88	1.28	3.63	<2.00
FL01-02@2'	01/16/2025	2	8.13	0.777	1.21	<2.00
FL01-03@2'	01/16/2025	2	7.88	7.88	3.43	<2.00
FL01-04@2'	01/16/2025	2	8.10	0.585	2.07	<2.00
FL01-05@4'	01/16/2025	4	8.01	1.22	3.62	<2.00
FL01-06@4'	01/16/2025	4	7.72	1.71	2.66	<2.00
FL01-08@1'	01/16/2025	1	7.71	0.604	3.39	<2.00
FL01-09@3'	01/16/2025	3	7.98	1.16	3.65	<2.00
SS01-FL01-09@2.5'	01/16/2025	2.5	8.06	0.800	3.90	<2.00
SS02-FL01-09@2.5'	01/16/2025	2.5	8.05	1.17	5.72	<2.00
SS03-FL01-09@2.5'	01/16/2025	2.5	7.97	0.647	4.28	<2.00
SS04-FL01-09@2.5'	01/16/2025	2.5	8.26	0.603	2.63	<2.00
FS01-FL01-09@5'	01/16/2025	5	8.06	0.810	3.61	<2.00
SS01-FL01R-W@4'	01/16/2025	4	8.23	0.584	4.05	<2.00
SS02-FL01R-W@4'	01/16/2025	4	8.12	0.646	1.82	<2.00
SS03-FL01R-W@4'	01/16/2025	4	8.46	0.201	0.776	<2.00
SS04-FL01R-W@4'	01/16/2025	4	8.29	0.263	0.960	<2.00
FS01-FL01R-W@6'	01/16/2025	6	8.23	0.289	1.14	<2.00
BKG01@0-6"	01/16/2025	0-0.5	7.44	0.224	3.35	<2.00
BKG01@1'	01/16/2025	1	8.60	0.203	0.306	<2.00
BKG01@2'	01/16/2025	2	7.42	0.769	0.852	<2.00
BKG01@2.5'	01/16/2025	2.5	7.19	0.902	3.11	<2.00
BKG01@3'	01/16/2025	3	7.48	0.566	3.04	<2.00
BKG01@4'	01/16/2025	4	7.37	0.613	2.79	<2.00
BKG01@5'	01/16/2025	5	7.24	0.650	3.93	<2.00
BKG01@6'	01/16/2025	6	7.57	0.647	3.71	<2.00
BKG02@0-6"	01/16/2025	0-0.5	7.53	0.781	3.75	<2.00
BKG02@1'	01/16/2025	1	8.21	0.432	3.27	<2.00
BKG02@2'	01/16/2025	2	8.34	0.754	3.02	<2.00
BKG02@2.5'	01/16/2025	2.5	8.66	0.487	3.81	<2.00
BKG02@3'	01/16/2025	3	7.69	0.447	4.59	<2.00
BKG02@4'	01/16/2025	4	7.18	0.991	3.32	<2.00
BKG02@5'	01/16/2025	5	8.89	0.469	3.43	<2.00
BKG02@6'	01/16/2025	6	8.86	0.384	2.85	<2.00
BKG03@0-6"	01/16/2025	0-0.5	7.83	0.639	3.36	<2.00
BKG03@1'	01/16/2025	1	7.74	0.772	3.50	<2.00
BKG03@2'	01/16/2025	2	7.60	0.732	3.61	<2.00
BKG03@2.5'	01/16/2025	2.5	7.60	0.747	3.07	<2.00
BKG03@3'	01/16/2025	3	7.78	0.620	3.70	<2.00
BKG03@4'	01/16/2025	4	7.95	0.764	3.24	<2.00
BKG03@5'	01/16/2025	5	7.81	0.678	2.51	<2.00
BKG03@6'	01/16/2025	6	7.96	0.662	3.49	<2.00
Maximum Background Concentration			8.89	0.991	4.59	<2.00

Notes:
1. **Bold** faced values exceed the ECMC Table 915-1 limit(s), but are within background concentrations.
2. **Bold** faced values exceed the ECMC Table 915-1 limit(s) and native background concentrations.
3. Brown highlighted soil analytical values indicate a regulatory exceedance.
ECMC = Colorado Energy & Carbon Management Commission
EC = Electrical conductivity
SAR = Sodium adsorption ratio
mmhos/cm = millimhos per centimeter
mg/L = milligram per liter
(<) = Analytical result is less than the indicated laboratory reporting limit.
ft. = Feet
bgs = Below ground surface
= Source material characterization sample, excavated and transported off site for disposal.

TABLE 5
SUMMARY OF METALS IN SOIL CHEMISTRY DATA
NOBLE ENERGY, INC. - 100322
FORMER DR. JOE CC 6-9 FLOWLINE, WELD COUNTY, COLORADO
REM # 33387

Sample ID	Sample Date	Depth (ft. bgs)	Arsenic (mg/kg)	Barium (mg/kg)	Cadmium (mg/kg)	Chromium (V) ^[6] (mg/kg)	Copper (mg/kg)	Lead (mg/kg)	Nickel (mg/kg)	Selenium (mg/kg)	Silver (mg/kg)	Zinc (mg/kg)
ECMC Table 915-1 Limits (Residential SSL)			0.68	15,000	71	0.3	3,100	400	1,500	390	390	23,000
ECMC Table 915-1 Limits (Protection of Groundwater SSL)			0.29	82	0.38	0.00067	46	14	26	0.26	0.8	370
FL01R-W@4'	01/16/2025	4	2.61	89.5	0.239	<0.30*	5.54	15.9	5.06	<0.260	0.0331	22.2
FL01-01@3'	01/16/2025	3	2.04	56.1	<0.200	<0.30*	3.30	4.21	3.39	<0.260	0.0233	11.7
FL01-02@2'	01/16/2025	2	1.21	29.2	<0.200	<0.30*	1.95	2.80	2.12	<0.260	<0.0200	10.1
FL01-03@2'	01/16/2025	2	1.60	45.3	<0.200	<0.30*	2.69	3.63	2.61	<0.260	<0.0200	12.3
FL01-04@2'	01/16/2025	2	1.26	25.2	<0.200	<0.30*	1.70	2.58	2.01	<0.260	<0.0200	7.86
FL01-05@4'	01/16/2025	4	1.82	43.1	<0.200	<0.30*	2.32	3.41	2.51	<0.260	<0.0200	11.2
FL01-06@4'	01/16/2025	4	2.84	70.2	<0.200	<0.30*	3.01	4.52	3.93	<0.260	0.0301	13.4
FL01-08@1'	01/16/2025	1	1.50	45.4	<0.200	<0.30*	2.51	3.68	2.77	<0.260	<0.0200	12.3
FL01-09@3'	01/16/2025	3	3.57	100	0.219	<0.30*	5.98	8.74	5.26	<0.260	0.0411	23.0
SS01-FL01-09@2.5'	01/16/2025	2.5	2.89	89.4	0.208	<0.30*	5.00	7.44	4.69	<0.260	0.0351	20.7
SS02-FL01-09@2.5'	01/16/2025	2.5	2.11	74.7	<0.200	<0.30*	3.98	5.69	3.94	<0.260	0.0255	15.9
SS03-FL01-09@2.5'	01/16/2025	2.5	3.28	108	0.258	<0.30*	6.51	10.6	5.91	<0.260	0.0434	25.6
SS04-FL01-09@2.5'	01/16/2025	2.5	1.94	75.8	<0.200	<0.30*	3.45	5.59	3.24	<0.260	<0.0200	14.7
FS01-FL01-09@5'	01/16/2025	5	2.67	84.7	0.221	<0.30*	5.01	7.03	4.69	<0.260	0.0292	19.1
SS01-FL01R-W@4'	01/16/2025	4	2.36	80.2	0.262	<0.30*	10.4	621	4.39	<0.260	0.0488	23.7
SS02-FL01R-W@4'	01/16/2025	4	1.46	43.2	<0.200	<0.30*	2.78	4.65	2.90	<0.260	<0.0200	10.0
SS03-FL01R-W@4'	01/16/2025	4	2.13	77.9	<0.200	<0.30*	2.13	11.0	4.30	<0.260	0.0302	18.4
SS04-FL01R-W@4'	01/16/2025	4	1.38	39.2	<0.200	<0.30*	2.58	3.58	2.65	<0.260	<0.0200	8.84
FS01-FL01R-W@6'	01/16/2025	6	2.33	69.5	<0.200	<0.30*	3.80	5.74	4.02	<0.260	0.0235	16.5
BKG01@0-6"	01/16/2025	0-0.5	1.74	56.8	<0.200	<0.30*	6.29	5.31	3.28	<0.260	0.0220	37.3
BKG01@1'	01/16/2025	1	1.75	44.2	<0.200	<0.30*	5.23	5.41	3.11	<0.260	0.0225	27.6
BKG01@2'	01/16/2025	2	2.03	48.3	<0.200	<0.30*	3.90	5.18	3.28	<0.260	0.0418	19.2
BKG01@2.5'	01/16/2025	2.5	1.39	41.8	<0.200	<0.30*	2.89	3.93	2.72	<0.260	<0.0200	13.9
BKG01@3'	01/16/2025	3	1.68	64.5	<0.200	<0.30*	3.26	4.71	3.29	<0.260	0.0263	12.1
BKG01@4'	01/16/2025	4	1.31	33.8	<0.200	<0.30*	1.85	3.37	2.09	<0.260	<0.0200	9.80
BKG01@5'	01/16/2025	5	1.69	38.8	<0.200	<0.30*	3.00	3.90	3.19	<0.260	<0.0200	13.8
BKG01@6'	01/16/2025	6	1.37	35.1	<0.200	<0.30*	2.58	3.87	2.45	<0.260	<0.0200	13.1
BKG02@0-6"	01/16/2025	0-0.5	2.81	79.1	0.210	<0.30*	5.31	7.43	4.32	<0.260	0.0350	25.1
BKG02@1'	01/16/2025	1	2.62	75.9	0.202	<0.30*	5.48	7.30	4.33	<0.260	0.0298	25.7
BKG02@2'	01/16/2025	2	1.67	48.0	<0.200	<0.30*	2.38	3.84	2.73	<0.260	<0.0200	10.7
BKG02@2.5'	01/16/2025	2.5	1.51	45.4	<0.200	<0.30*	2.18	3.89	2.54	<0.260	0.0209	10.8
BKG02@3'	01/16/2025	3	2.75	84.6	0.200	<0.30*	5.18	7.96	4.64	<0.260	0.0347	21.9
BKG02@4'	01/16/2025	4	1.57	38.3	<0.200	<0.30*	1.68	3.08	2.29	<0.260	<0.0200	9.12
BKG02@5'	01/16/2025	5	1.39	36.2	<0.200	<0.30*	1.49	2.97	1.96	<0.260	<0.0200	8.21
BKG02@6'	01/16/2025	6	1.65	37.4	<0.200	<0.30*	1.83	3.26	2.32	<0.260	<0.0200	9.21
BKG03@0-6"	01/16/2025	0-0.5	3.43	106	0.312	<0.30*	6.50	10.8	5.52	<0.260	0.0487	28.2
BKG03@1'	01/16/2025	1	3.46	108	0.355	<0.30*	7.06	12.8	5.68	<0.260	0.0539	32.8
BKG03@2'	01/16/2025	2	3.36	99.8	0.331	<0.30*	6.67	12.0	5.43	<0.260	0.0503	30.3
BKG03@2.5'	01/16/2025	2.5	3.54	114	0.369	<0.30*	6.93	12.8	5.79	<0.260	0.0594	29.0
BKG03@3'	01/16/2025	3	3.18	101	0.348	<0.30*	6.53	13.4	5.47	<0.260	0.0530	28.7
BKG03@4'	01/16/2025	4	2.95	87.0	0.258	<0.30*	5.73	9.41	4.93	<0.260	0.0458	24.0
BKG03@5'	01/16/2025	5	2.35	79.9	0.208	<0.30*	4.92	7.30	4.46	<0.260	0.0315	19.9
BKG03@6'	01/16/2025	6	1.45	45.2	<0.200	<0.30*	2.65	3.99	2.78	<0.260	<0.0200	11.6
Maximum Background Concentration X 1.25			4.43	143	-	-	-	16.8	-	-	-	-

Notes:

1. **Bold** faced values exceed the ECMC Table 915-1 limit(s), but are within 1.25x background concentrations.
2. **Bold** faced values exceed the ECMC Table 915-1 limit(s) and native background concentrations.
3. Red & blue highlighted soil analytical values indicate an exceedance of the referenced soil screening level (SSL).
4. Compound falls within ECMC Table 915-1 Footnote 9.
5. Non-detect background results accounted for in the highest background concentration by using the reporting limit.

ECMC = Energy & Carbon Management Commission

(<) = Analytical result is less than the indicated laboratory reporting limit.

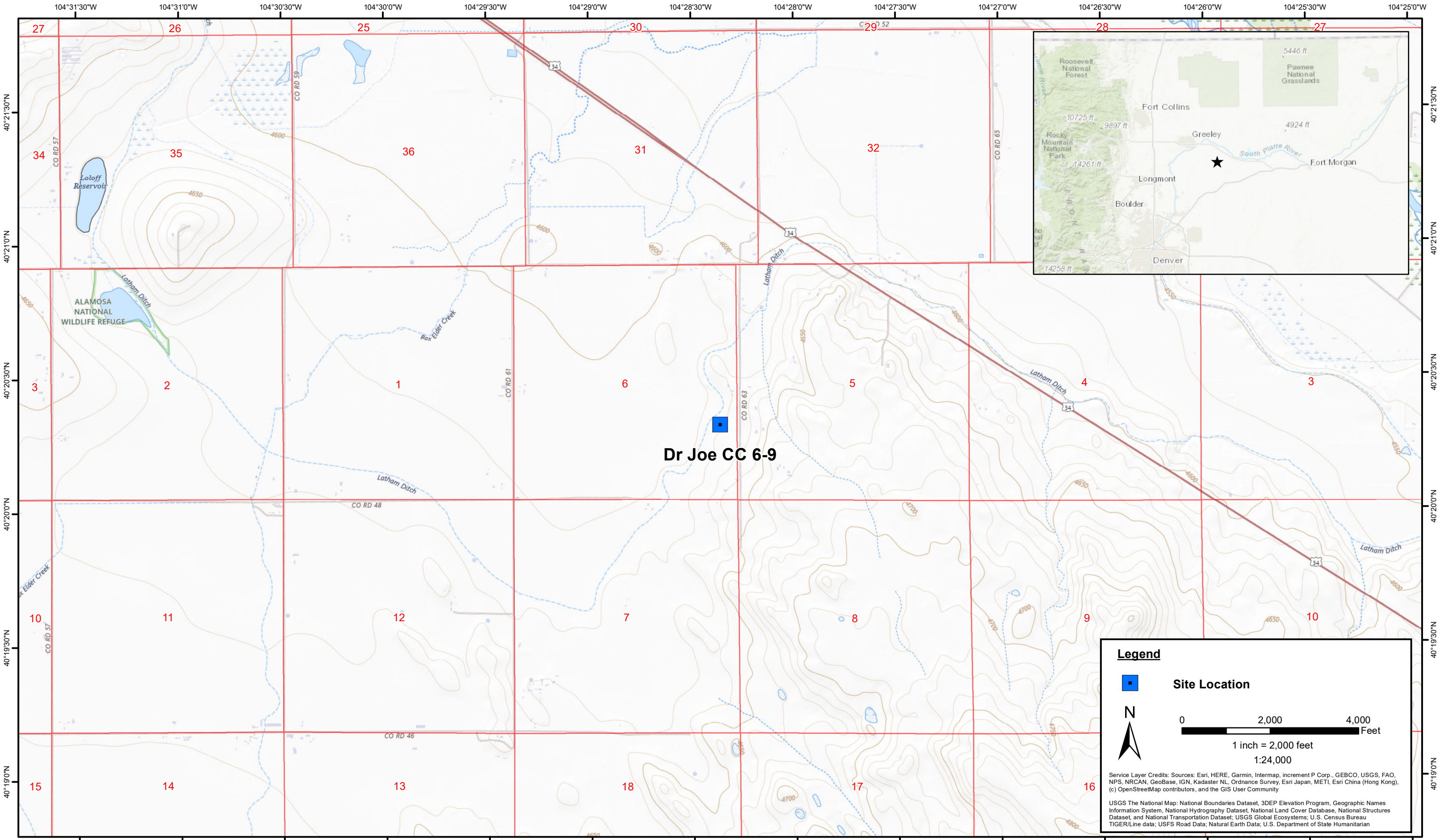
mg/kg = Milligrams per kilogram

ft. = Feet

bgs = Below ground surface

* Indicates laboratory minimum detection limit in excess of SSL

 = Source material characterization sample, excavated and transported off site for disposal.



N

02,0004,000

Feet

1 inch = 2,000 feet

1:24,000

Service Layer Credits: Sources: Esri, HERE, Garmin, Intermap, increment P Corp., GEBCO, USGS, FAO, NPS, NRCAN, GeoBase, IGN, Kadaster NL, Ordnance Survey, Esri Japan, METI, Esri China (Hong Kong), (c) OpenStreetMap contributors, and the GIS User Community

USGS The National Map: National Boundaries Dataset, 3DEP Elevation Program, Geographic Names Information System, National Hydrography Dataset, National Land Cover Database, National Structures Dataset, and National Transportation Dataset; USGS Global Ecosystems; U.S. Census Bureau TIGER/Line data; USFS Road Data; Natural Earth Data; U.S. Department of State Humanitarian

DATE:
January 2025

DESIGNED BY:
B. Nelson

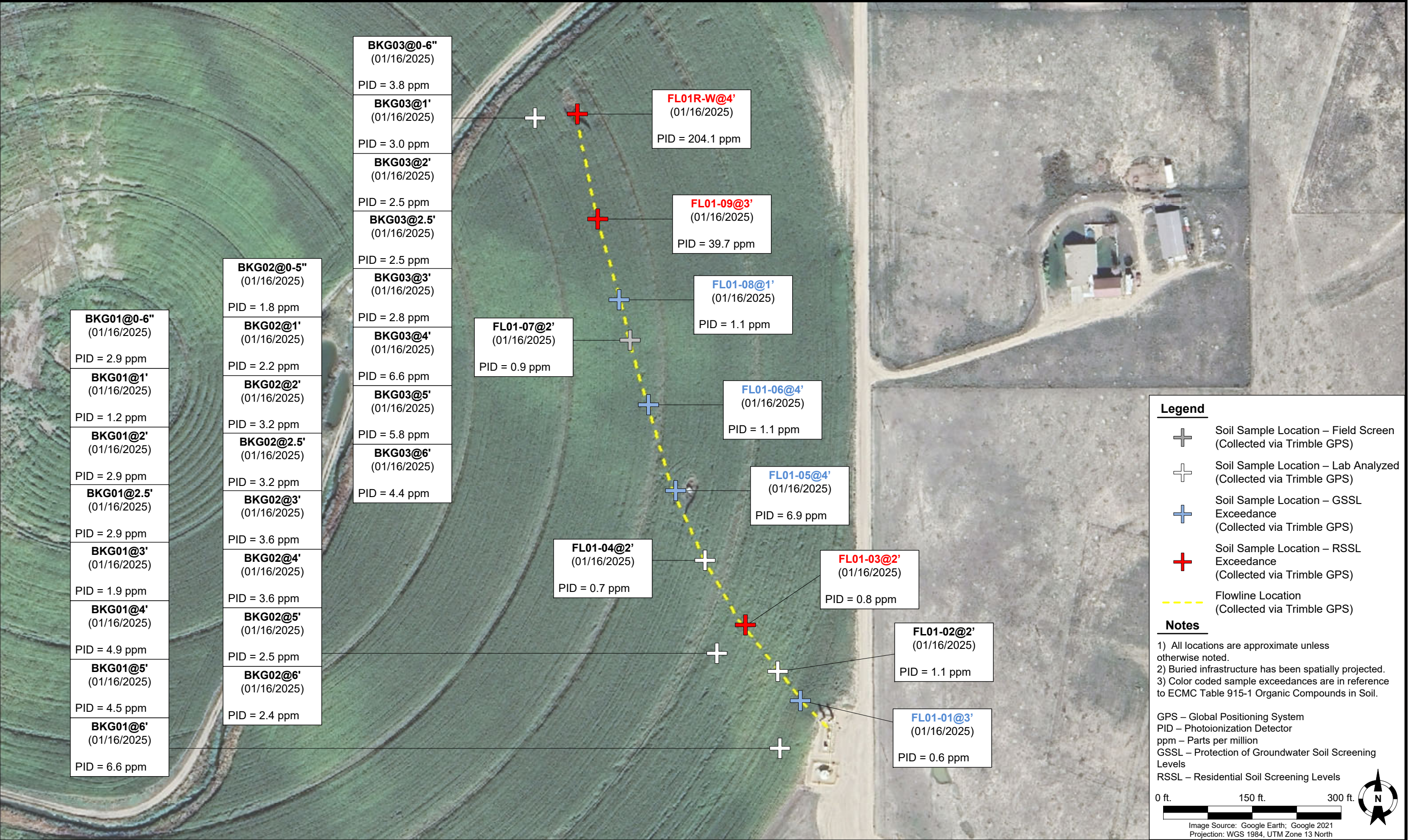
DRAWN BY:
J. Woffinden

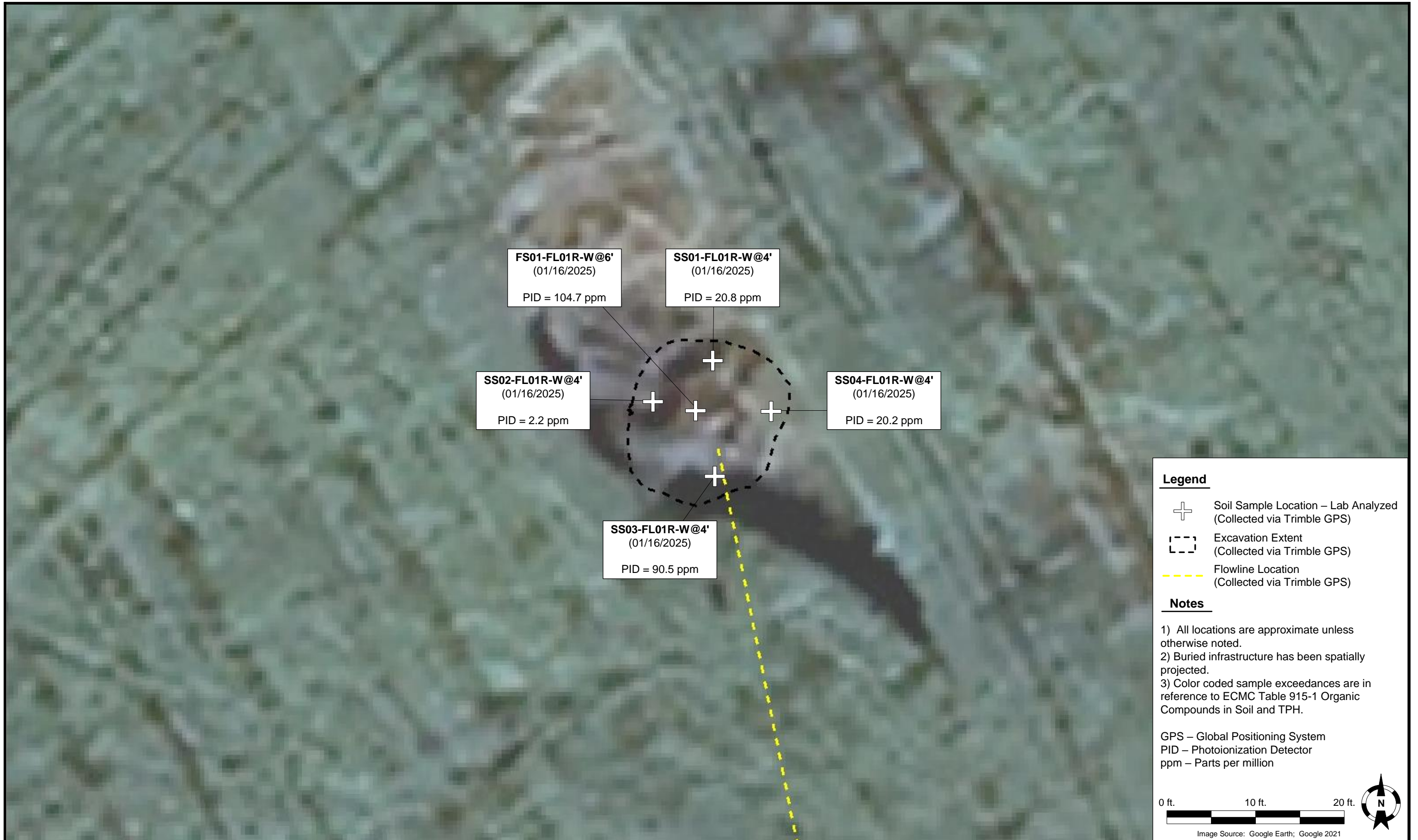


Noble Energy, Inc. – 100322 – DJ Basin
Dr Joe CC 6-9
NESE, Section 6, Township 4 North, Range 63 West
Weld County, Colorado

Site Location Map

Figure
1





Legend

- Soil Sample Location – Lab Analyzed
(Collected via Trimble GPS)
- Excavation Extent
(Collected via Trimble GPS)
- Flowline Location
(Collected via Trimble GPS)

Notes

- 1) All locations are approximate unless otherwise noted.
 - 2) Buried infrastructure has been spatially projected.
 - 3) Color coded sample exceedances are in reference to ECMC Table 915-1 Organic Compounds in Soil and TPH.
- GPS – Global Positioning System
PID – Photoionization Detector
ppm – Parts per million

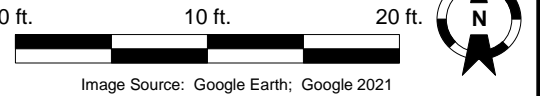



Image Source: Google Earth; Google 2021

DATE: January 16, 2025	 <div>Tasman, Inc. 6855 W 119th Avenue Broomfield, CO 80020</div>	Noble Energy, Inc. (100322) – DJ Basin Dr Joe CC06-09 NESE, Section 6, Township 4 North, Range 66 West Weld County, Colorado	SOIL SAMPLE LOCATION MAP (EXCAVATION)	FIGURE 3
DESIGNED BY: J. Whritenour				
DRAWN BY: J. Clonts				



Legend

- ⊕ Soil Sample Location – Lab Analyzed (Collected via Trimble GPS)
- ⊕ Soil Sample Location – GSSL Exceedance (Collected via Trimble GPS)
- ⊖ Excavation Extent (Collected via Trimble GPS)
- Flowline Location (Collected via Trimble GPS)

Notes

- 1) All locations are approximate unless otherwise noted.
- 2) Buried infrastructure has been spatially projected.
- 3) Color coded sample exceedances are in reference to ECMC Table 915-1 Organic Compounds in Soil and TPH.

GPS – Global Positioning System
PID – Photoionization Detector
ppm – Parts per million
GSSLs – Protection of Groundwater Soil Screening Levels
RSSL – Residential Soil Screening Levels

0 ft. 10 ft. 20 ft.

Image Source: Google Earth; Google 2021