

DATE:	February 2025
DESIGNED BY:	J. Whritenour
DRAWN BY:	L. Reed

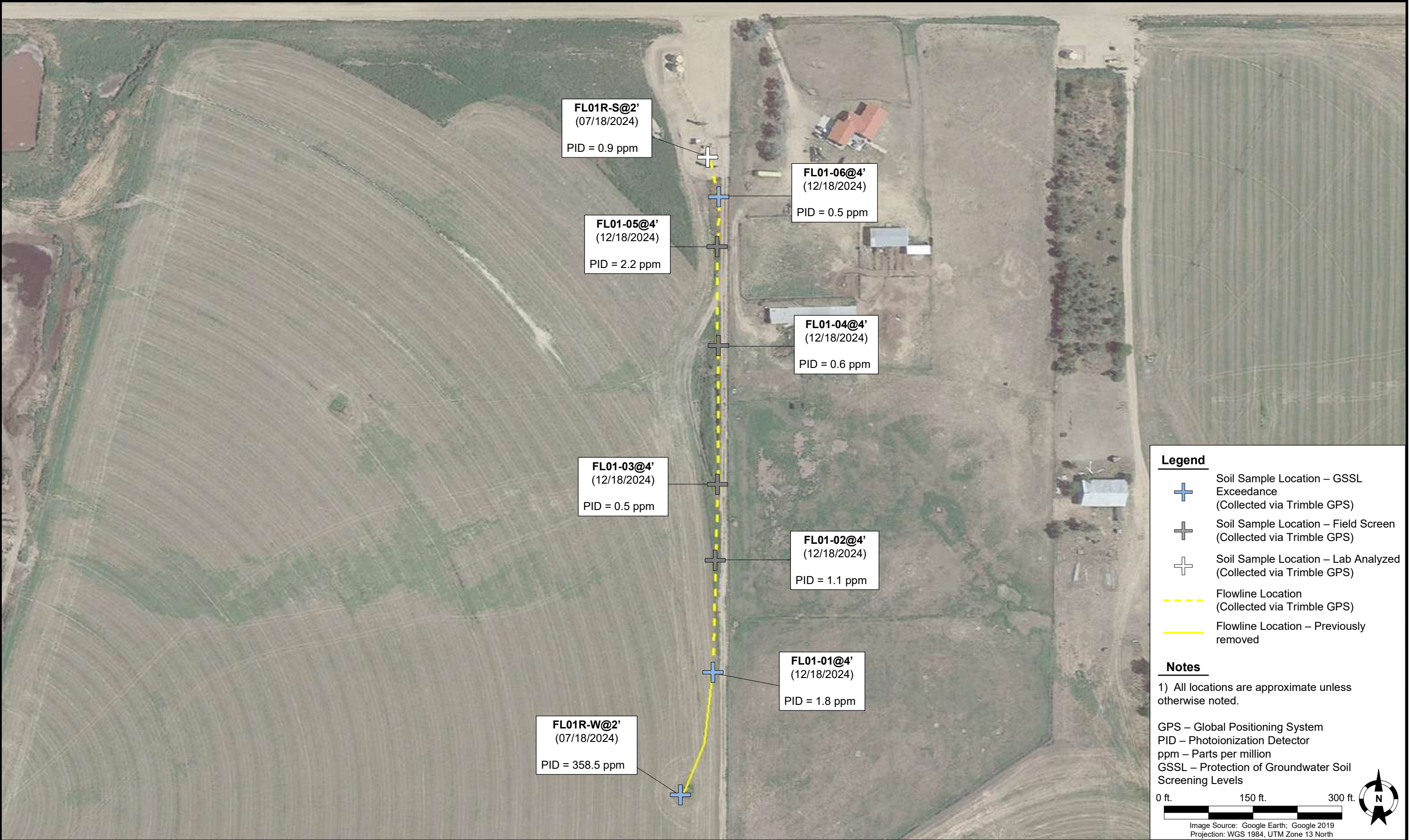


**Noble Energy, Inc. - 100322 - DJ Basin**  
**Hanscome C28-18**  
NWNE, Section 28, Township 4 North, Range 64 West  
Weld County, Colorado

Site Location Map

Figure  
1





**TABLE 1**  
**FIELD DATA SUMMARY TABLE**  
**NOBLE ENERGY, INC - 100322**  
**HANSCOME C28-18, WELD COUNTY, COLORADO**  
**REM # 34732**

Sample ID	Sample Date	Depth (ft. bgs)	GPS Data Latitude/Longitude		PDOP Value	VOC Concentration (ppm)
FL01R-S@2'	7/18/2024	2	40.290068	-104.555944	NC	0.9
FL01R-W@2'	7/18/2024	2	40.287057	-104.556124	1.0	358.5
FL01-01@4'	12/17/2024	4	40.285934	-104.555901	NC	1.8
FL01-02@4'	12/17/2024	4	40.288128	-104.555920	1.6	1.1
FL01-03@4'	12/17/2024	4	40.288479	-104.555908	0.9	0.5
FL01-04@4'	12/17/2024	4	40.287607	-104.555939	0.9	0.6
FL01-05@4'	12/17/2024	4	40.289584	-104.555903	0.8	2.2
FL01-06@4'	12/17/2024	4	40.289818	-104.555875	0.8	0.5

**Notes:**

1. Global Positioning System (GPS) data is provided in decimal degrees using North American Datum (NAD) 83 UTM Zone 13 North.
2. Volatile organic compound (VOC) concentrations are measured in the field using a photoionization detector (PID).

PDOP = Position Dilution of Precision

ppm = Parts per million

in. = Inches

ft. = Feet

bgs = Below ground surface

NC = Data not collected



TABLE 2  
SUMMARY OF VOLATILE ORGANIC SOIL CHEMISTRY DATA  
NOBLE ENERGY, INC - 100322  
HANSCOME C28-18, WELD COUNTY, COLORADO  
REM # 34732

Sample ID	Sample Date	Depth (ft. bgs)	Benzene (mg/kg)	Toluene (mg/kg)	Ethyl-Benzene (mg/kg)	Xylenes (mg/kg)	1,2,4- Trimethyl- Benzene (mg/kg)	1,3,5- Trimethyl- Benzene (mg/kg)	Naphthalene (mg/kg)	TPH (mg/kg)	TPH GRO (mg/kg)	TPH DRO (mg/kg)	TPH ORO (mg/kg)
ECMC Table 915-1 Limits (Residential SSL)			1.2	490	5.8	58	30	27	2	500	500**		
ECMC Table 915-1 Limits (Protection of Groundwater SSL)			0.0026	0.69	0.78	9.9	0.0081	0.0087	0.0038	500	500**		
FL01R-S@2'	7/18/2024	2	<0.0020	<0.0050	<0.0050	<0.010	<0.0050	<0.0050	<0.0038	<500	<0.50	<50	<50
FL01R-W@2'	7/18/2024	2	0.036	0.0072	<0.0050	0.019	<0.0050	<0.0050	<0.0038	1.1	1.1	<50	<50
FL01-01@4'	12/17/2024	4	<0.0020	<0.0050	<0.0050	<0.010	<0.0050	<0.0050	<0.0038	<50	<0.50	<50	<50
FL01-06@4'	12/17/2024	4	<0.0020	<0.0050	<0.0050	<0.010	<0.0050	<0.0050	<0.0038	<50	<0.50	<50	<50

**Notes:**

1. **Bold** values exceed the ECMC Table 915-1 limit(s).
2. Pink & blue highlighted soil analytical values indicate an exceedance of the referenced soil screening level (SSL).
3. \* Indicates laboratory minimum detection limit in excess of SSL.
4. \*\* Summation of GRO+DRO+ORO must be less than 500 mg/kg.

ECMC = Energy & Carbon Management Commission

(<) = Analytical result is less than the indicated laboratory reporting limit.

TPH-GRO = Total petroleum hydrocarbons - gasoline range organics

TPH-DRO = Total petroleum hydrocarbons - diesel range organics

TPH-ORO = Total petroleum hydrocarbons - oil range organics

mg/kg = Milligrams per kilogram

ft. = Feet

bgs = Below ground surface

TABLE 3  
SUMMARY OF POLYCYCLIC AROMATIC HYDROCARBON SOIL CHEMISTRY DATA  
NOBLE ENERGY, INC - 100322  
HANSCOME C28-18, WELD COUNTY, COLORADO  
REM # 34732

Sample ID	Sample Date	Depth (ft. bgs)	Acenaphthene (mg/kg)	Anthracene (mg/kg)	Benzo (a) Anthracene (mg/kg)	Benzo (a) Pyrene (mg/kg)	Benzo (b) Fluoranthene (mg/kg)	Benzo (k) Fluoranthene (mg/kg)	Chrysene (mg/kg)	Dibenzo (a,h) Anthracene (mg/kg)	Fluoranthene (mg/kg)	Fluorene (mg/kg)	Indeno (1,2,3- cd) Pyrene (mg/kg)	Pyrene (mg/kg)	1-Methyl - Naphthalene (mg/kg)	2-Methyl- Naphthalene (mg/kg)
ECMC Table 915-1 Limits (Residential SSL)			360	1,800	1.1	0.11	1.1	11	110	0.11	240	240	1.1	180	18	24
ECMC Table 915-1 Limits (Protection of Groundwater SSL)			0.55	5.8	0.011	0.24	0.3	2.9	9	0.096	8.9	0.54	0.98	1.3	0.006	0.019
FL01R-S@2'	7/18/2024	2	<0.00500	<0.00500	<0.00500	<0.00500	<0.00500	<0.00500	<0.00500	<0.00500	<0.00500	<0.00500	<0.00500	<0.00500	<0.00500	<0.00500
FL01R-W@2'	7/18/2024	2	<0.00500	<0.00500	<0.00500	<0.00500	<0.00500	<0.00500	<0.00500	<0.00500	<0.00500	<0.00500	<0.00500	<0.00500	<0.00500	0.00670
FL01-01@4'	12/17/2024	4	<0.00500	0.00852	0.0133	0.00911	0.0124	<0.00500	0.0110	<0.00500	0.0291	<0.00500	0.0110	0.0223	<0.00500	<0.00500
FL01-06@4'	12/17/2024	4	<0.00500	0.00688	0.0124	0.00880	0.0107	<0.00500	0.00963	<0.00500	0.0268	<0.00500	0.0108	0.0182	<0.00500	<0.00500

**Notes:**

1. **Bold** values exceed the ECMC Table 915-1 limit(s).
2. Pink & blue highlighted soil analytical values indicate an exceedance of the referenced soil screening level (SSL).
3. \* Indicates laboratory minimum detection limit in excess of SSL.

ECMC = Colorado Energy & Carbon Management Commission

(<) = Analytical result is less than the indicated laboratory reporting limit.

ft. = Feet

bgs = Below ground surface

mg/kg = Milligrams per kilogram

TABLE 4  
SUMMARY OF SOIL SUITABILITY FOR RECLAMATION  
NOBLE ENERGY, INC - 100322  
HANSCOME C28-18, WELD COUNTY, COLORADO  
REM # 34732

Sample ID	Sample Date	Depth (ft. bgs)	pH (Standard Units)	EC (mmhos/cm)	SAR (Standard Units)	Boron (mg/L)
ECMC Table 915-1 Soil Suitability Limits			6 - 8.3	<4	<6	2
FL01R-S@2'	7/18/2024	2	7.80	0.237	0.0626	<2.00
FL01R-W@2'	7/18/2024	2	8.47	0.288	0.385	<2.00
FL01-01@4'	12/17/2024	4	8.05	0.586	3.29	<2.00
FL01-06@4'	12/17/2024	4	7.91	1.32	0.787	<2.00

**Notes:**

1. **Bold** faced values exceed the ECMC Table 915-1 limit(s), but are within background concentrations.
2. **Bold** faced values exceed the ECMC Table 915-1 limit(s) and native background concentrations.
3. Brown highlighted soil analytical values indicate a regulatory exceedance.

ECMC = Colorado Energy & Carbon Management Commission

EC = Electrical conductivity

SAR = Sodium adsorption ratio

mmhos/cm = millimhos per centimeter

mg/L = milligram per liter

(<) = Analytical result is less than the indicated laboratory reporting limit.

ft. = Feet

bgs = Below ground surface

TABLE 5  
SUMMARY OF METALS IN SOIL CHEMISTRY DATA  
NOBLE ENERGY, INC - 100322  
HANSCOME C28-18, WELD COUNTY, COLORADO  
REM # 34732

Sample ID	Sample Date	Depth (ft. bgs)	Arsenic (mg/kg)	Barium (mg/kg)	Cadmium (mg/kg)	Chromium (VI) <sup>[4]</sup> (mg/kg)	Copper (mg/kg)	Lead (mg/kg)	Nickel (mg/kg)	Selenium (mg/kg)	Silver (mg/kg)	Zinc (mg/kg)
ECMC Table 915-1 Limits (Residential SSL)			0.68	15,000	71	0.3	3,100	400	1,500	390	390	23,000
ECMC Table 915-1 Limits (Protection of Groundwater SSL)			0.29	82	0.38	0.00067	46	14	26	0.26	0.8	370
FL01R-S@2'	7/18/2024	2	1.62	42.6	<0.200	<0.30	5.07	6.25	2.89	<0.260	0.0343	23.1
FL01R-W@2'	7/18/2024	2	2.18	52.8	<0.200	<0.30	4.39	6.82	3.51	<0.260	0.0238	15.7
FL01-01@4'	12/17/2024	4	2.11	45.9	0.208	<0.30	4.66	6.00	4.00	<0.260	0.0268	19.5
FL01-06@4'	12/17/2024	4	2.65	58.8	0.277	<0.30	6.00	8.48	4.67	<0.260	0.0360	23.9

**Notes:**

1. **Bold** faced values exceed the ECMC Table 915-1 limit(s), but are within 1.25x background concentrations.
2. **Bold** faced values exceed the ECMC Table 915-1 limit(s) and native background concentrations.
3. Red & blue highlighted soil analytical values indicate an exceedance of the referenced soil screening level (SSL).
4. Compound falls within ECMC Table 915-1 Footnote 9.
5. Non-detect background results accounted for in the highest background concentration by using the reporting limit.

ECMC = Energy & Carbon Management Commission

(<) = Analytical result is less than the indicated laboratory reporting limit.

mg/kg = Milligrams per kilogram

ft. = Feet

bgs = Below ground surface

\* Indicates laboratory minimum detection limit in excess of SSL



CLIENT: Noble		SITE NAME: Hanscome C28-18					DATE: 12/17/2024	REM. PROJECT #: 34732	WEATHER: 40s cloudy	
SITE DIRECTIONS: CR 42 & CR52 E1/2, S80'							JOB#:			
LEGALS AND LAT/LONG: 40.290065 -104.555953							TASMAN PERSONNEL: Mb			
SOIL TYPES: Poorly Graded Sand - SP							SURFACE GRADIENT: South			
SOIL SAMPLING							FACILITY INFRASTRUCTURE			
Date/Time	Soil Sample ID	PID (ppm)	Visual	Olfactory	Photo?	Grab or Lab Sample?	EQUIPMENT		Quantity	
							Above Ground Storage Tank (AST)			
12-17-2024 11:52	FL01-01@4'	1.8	No Staining	No Odor	Yes	Lab	Buried or Partially Buried Vessel			
12-17-2024 12:00	FL01-02@4'	1.1	No Staining	No Odor	Yes	Grab	Separator			
12-17-2024 12:11	FL01-03@4'	0.5	No Staining	No Odor	Yes	Grab	Emission Control Device (ECD)			
12-17-2024 12:12	FL01-04@4	0.6	No Staining	No Odor	Yes	Grab	Dump Line			
12-17-2024 13:14	FL01-05@4'	2.2	No Staining	No Odor	Yes	Grab	Wellhead			
12-17-2024 15:52	FL01-06@4'	0.5	No Staining	No Odor	Yes	Lab	Flowline		1	✓
							Other:			
							Soil Loads Removed			
							IMPACTED SOIL IDENTIFIED?			
							ESTIMATED VOLUME OF IMPACTS:			
							Date	Number	CY	
							Total Removed		0	0
							Disposal Facility:			
							Groundwater Recovery			
							DATE GW ENCOUNTERED:		DEPTH:	
							GROUNDWATER IN CONTACT WITH IMPACTED SOIL?			
							LNAPL OR SHEEN OBSERVED ON GW?			
GROUNDWATER SAMPLING							Date		BBLS	
Date/Time	Groundwater Sample ID	Depth Collected	Turbid?	Sheen?	Odor?	Photo?				
							Total Removed		0	
							Disposal Facility:			



# Chevron Rockies Business Unit

## Field Qualitative Criteria for ECMC Reporting Associated with the Discovery of Potentially Impacted Material

If answered **Yes** to any of the questions listed below, this may suggest the presence of potentially impacted materials as outlined in ECMC Rule 912. Out of an abundance of caution, a “Yes” response will be reported to the ECMC within 24 hours after discovery, regardless of laboratory results. **Immediately notify the RBU Remediation Team.** Include a copy of this Field Qualitative Spill Criteria Checklist in the field Report.

Please answer the following questions when on-site:



1. Is there visible petroleum hydrocarbon staining in the soil? No
2. Does the soil sample from the stained area have a petroleum odor? No
3. Is there a petroleum hydrocarbon sheen on the nearby surface water? No
4. Does there appear to be a sheen of the surface of accumulated groundwater or seeps within the excavation indicative of petroleum? No
5. Is stained soil in contact with groundwater? No

Please Include relevant photos of the site conditions for items 1-5.



Location name: Hanscome C28-18

Please Circle Facility Type: Flowline

Need another General Observation Form?

							
Equipment ID: FL01-01 @ 4'		Equipment Type:		Equipment ID: FL01-02 @ 4'		Equipment Type:	
Material:	Volume:	Contents:		Material:	Volume:	Contents:	
Notes/Conditions:				Notes/Conditions:			



							
<b>Equipment ID:</b> FL01-03@4'		<b>Equipment Type:</b>		<b>Equipment ID:</b> FL01-04@4'		<b>Equipment Type:</b>	
<b>Material:</b>	<b>Volume:</b>	<b>Contents:</b>		<b>Material:</b>	<b>Volume:</b>	<b>Contents:</b>	
<b>Notes/Conditions:</b>				<b>Notes/Conditions:</b>			



							
<b>Equipment ID:</b> FL01-05 @ 4'		<b>Equipment Type:</b>		<b>Equipment ID:</b> FL01-06 @ 4'		<b>Equipment Type:</b>	
<b>Material:</b>	<b>Volume:</b>	<b>Contents:</b>		<b>Material:</b>	<b>Volume:</b>	<b>Contents:</b>	
<b>Notes/Conditions:</b>				<b>Notes/Conditions:</b>			



SITE NAME: Hanscome C28-18 Flowline							DATE: 7/18/2024	REM. PROJECT #: 34732	WEATHER: 80s sunny
SITE DIRECTIONS: CR 53 X CR 42, E on CR 42 0.5 mi, S into TB							CLIENT: Noble		
LEGALS AND LAT/LONG: 40.287070, -104.556128							TASMAN PERSONNEL: RY, JR		
SOIL TYPES: Well Graded Sand - SW							SURFACE GRADIENT: North		
SOIL SAMPLING							FACILITY INFRASTRUCTURE		
Date/Time	Soil Sample ID	PID (ppm)	Visual	Olfactory	Photo?	Grab or Lab Sample?	EQUIPMENT	Quantity	Photo?
							Above Ground Storage Tank (AST)		
7/18/2024 12:30	FL01R-S@2'	0.9	No Staining	No Odor	Yes	Lab	Buried or Partially Buried Vessel		
7/18/2024 12:40	FL01R-W@2'	358.5	No Staining	Slight HC Odor	Yes	Lab	Separator		
							Emission Control Device (ECD)		
							Dump Line		
							Wellhead		
							Flowline	1	✓
							Other:		
							Soil Loads Removed		
							IMPACTED SOIL IDENTIFIED?		
							ESTIMATED VOLUME OF IMPACTS:		
							Date	Number	CY
							Total Removed	0	0
							Disposal Facility:		
							Groundwater Recovery		
							DATE GW ENCOUNTERED:	DEPTH:	
							GROUNDWATER IN CONTACT WITH IMPACTED SOIL?		
							LNAPL OR SHEEN OBSERVED ON GW?		
GROUNDWATER SAMPLING							Date	BBLs	
Date/Time	Groundwater Sample ID	Depth Collected	Turbid?	Sheen?	Odor?	Photo?			
							Total Removed	0	
							Disposal Facility:		



Site Area/AOC: Hanscome C28-18 Flowline Client: Noble

Daily Forecast/Weather: 80s sunny Personnel: RY, JR

Task/Location Description: Flowline Abandonment

Need photo log?





							
<b>Equipment ID:</b> FL01R-S		<b>Equipment Type:</b>		<b>Equipment ID:</b> FL01R-W		<b>Equipment Type:</b>	
<b>Material:</b>		<b>Volume:</b>		<b>Contents:</b>		<b>Material:</b>	
<b>Volume:</b>		<b>Contents:</b>		<b>Material:</b>		<b>Volume:</b>	
<b>Notes/Conditions:</b>				<b>Notes/Conditions:</b>			