



RADIAL BOND LOG WITH GAMMA RAY

ENERGY SERVICES

Comp. ANADARKO PETROLEUM CORP		Company ANADARKO PETROLEUM CORP	
Well DECHANT X 01-03		Well DECHANT X 01-03	
Field WATTENBERG		Field WATTENBERG	
Co. WELD		County WELD	
State CO		State CO	
Location: API # : 05-123-31913		Other Services	
NE/NW		PERF	
SEC 1 TWP 2N RGE 65W			
Permanent Datum	GL	Elevation 4831'	Elevation
Log Measured From	KB	13' Above Perm. Datum	K.B. 4844'
Drilling Measured From	KB		D.F. 4843'
			G.L. 4831'
Date of Service	NOV 1ST, 2024		
Run Number	ONE		
Depth Driller or PBTD	7699'		
Depth Logger	5024'		
Bottom Log Interval	5020'		
Top Log Interval	SURFACE		
Open Hole Size	7.875"		
Type Fluid	WATER		
Fluid Level	SURFACE		
Fluid Density	8.3#		
Max. Recorded Temperature	159° F		
Max. Wellhead Pressure	ZERO		
Wellhead Connection	7 1/16" 5K		
Estimated Cement Top	SEE LOG		
Unit Number	5074		
Wireline Size	9/32"		
Location	PLATTEVILLE, CO		
Recorded By	GREG JACKSON		
Witnessed By	VICTOR IDELFONSO		
	Size	Wt/Ft	Top
Tubing Record			Bottom
Surface Casing	8-5/8	24#	SURFACE
Production Casing	4-1/2	11.6#	SURFACE
Liner Record			

<<< Fold Here >>>

All interpretations are opinions based on inferences from electrical or other measurements and Pioneer Wireline Services, LLC cannot and does not guarantee the accuracy or correctness of any interpretation, and Pioneer Wireline Services, LLC will not be liable or responsible for any loss, costs, damages, or expenses incurred or sustained by anyone resulting from any interpretation made by any of our officers, agents or employees.

Comments

N/A DENOTES NOT AVAILABLE OR NON-APPLICABLE.
LOG CORRELATED TO EXISTING RECORDED PERF DEPTHS

THANK YOU FOR USING PIONEER ENERGY SERVICES!

Your Pioneer Energy Services Crew		Tool Data - Services	Serial Number
Engineer: G. JACKSON Operator: M. LLAMAS Operator: B. MATCHETT Operator:		BOND GAMMA RAY/CCL	

Log Variables

DatabaseC:\ProgramData\Warrior\Data\oxy_dechant x01-03_rcbl_11-1-24.db
Dataset field/well/run1/pass2/_vars_

Top - Bottom

BOREID in 7.875	BOTTEMP degF 100	CASEOD in 4.5	CASETHCK in 0	CASEWGHT lb/ft 11.6	MAXAMPL mV 81.2	MINAMPL mV 1
MINATTN db/ft 0.08	PERFS No	PPT usec 0	SRFTEMP degF 0	TDEPTH ft 0		

Variable Description

BOREID : Borehole I.D.
BOTTEMP : Bottom Hole Temperature
CASEOD : Casing O.D.
CASETHCK : Casing Thickness
CASEWGHT : Casing Weight
MAXAMPL : Maximum Amplitude
MINAMPL : Minimum Amplitude
MINATTN : Minimum Attenuation
PERFS : Perforation Flag
PPT : Predicted Pipe Time
SRFTEMP : Surface Temperature
TDEPTH : Total Depth



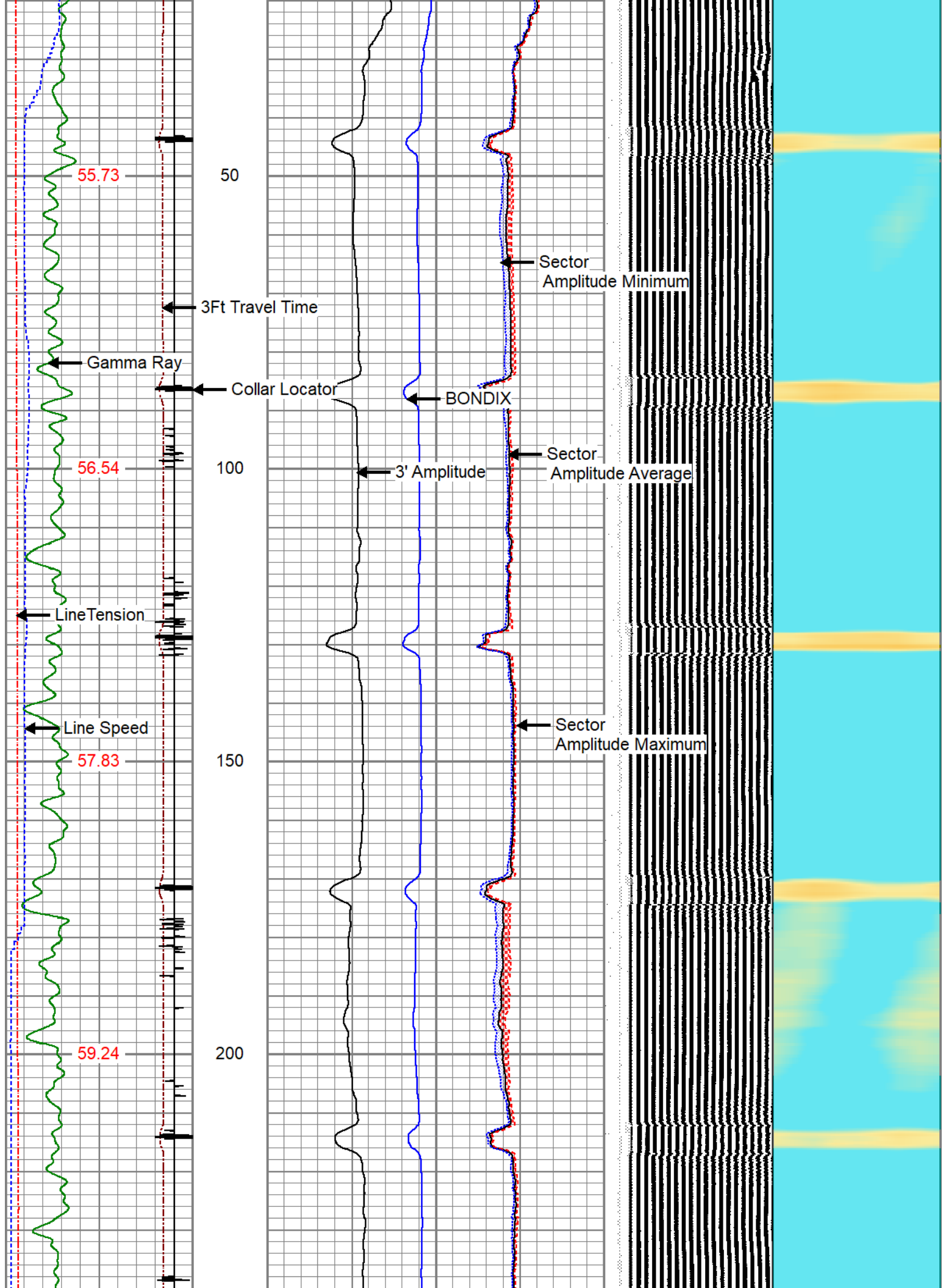
MAIN LOG

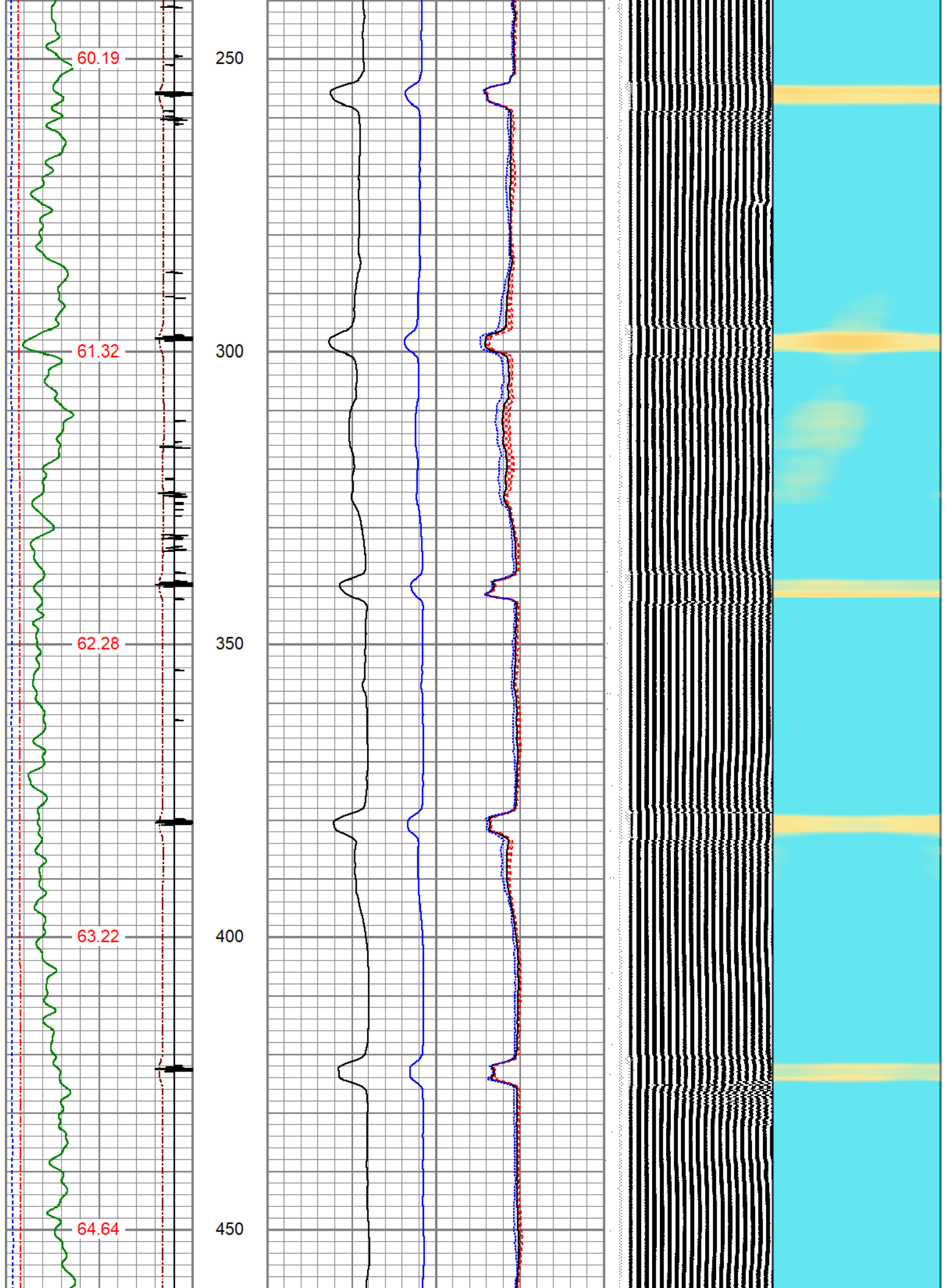
ZERO PSI APPLIED AT SURFACE

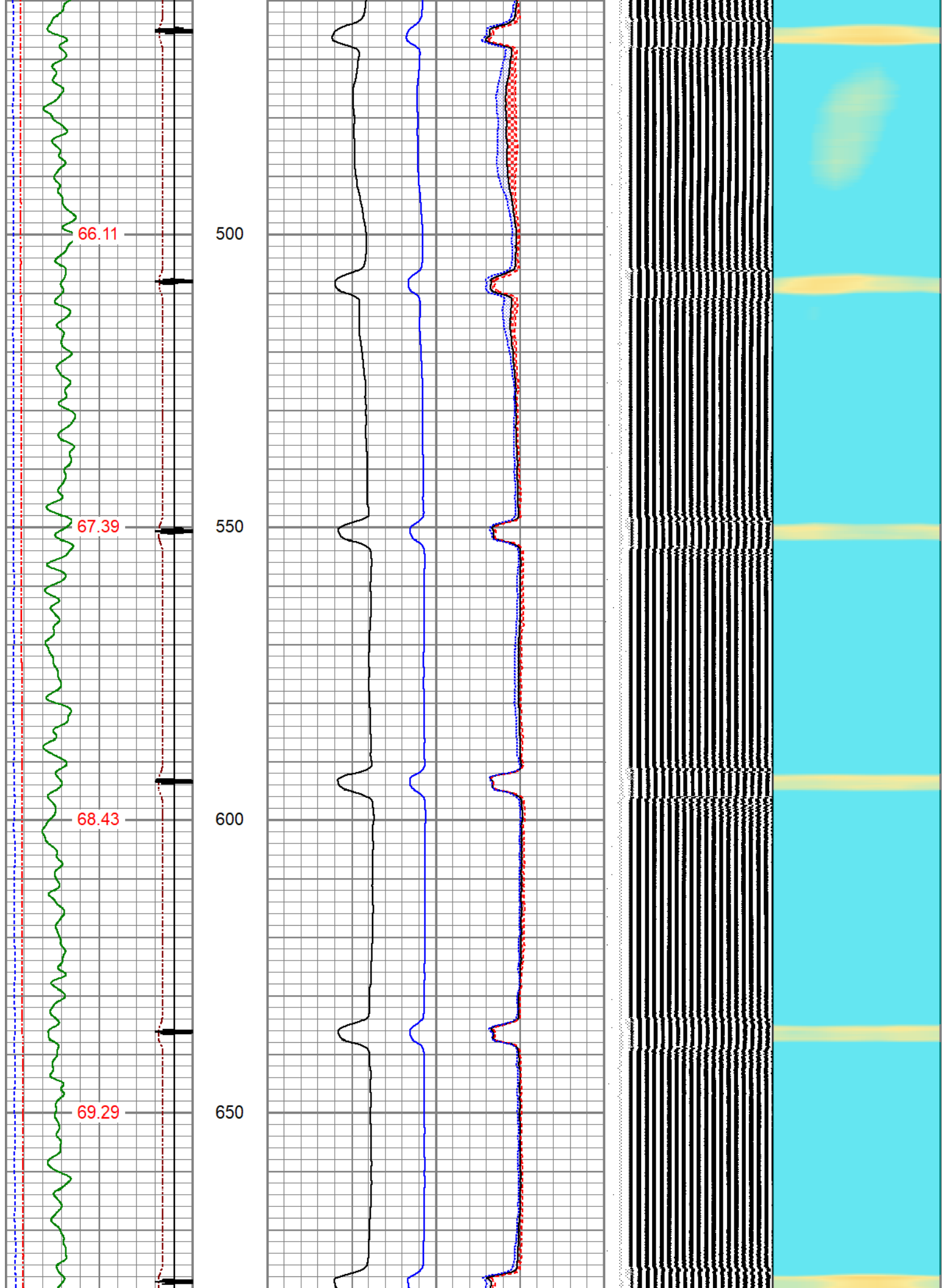
Database File oxy_dechant x01-03_rcbl_11-1-24.db
Dataset Pathname pass2
Presentation Format pinr_scbl
Dataset Creation Fri Nov 01 09:08:02 2024
Charted by Depth in Feet scaled 1:240

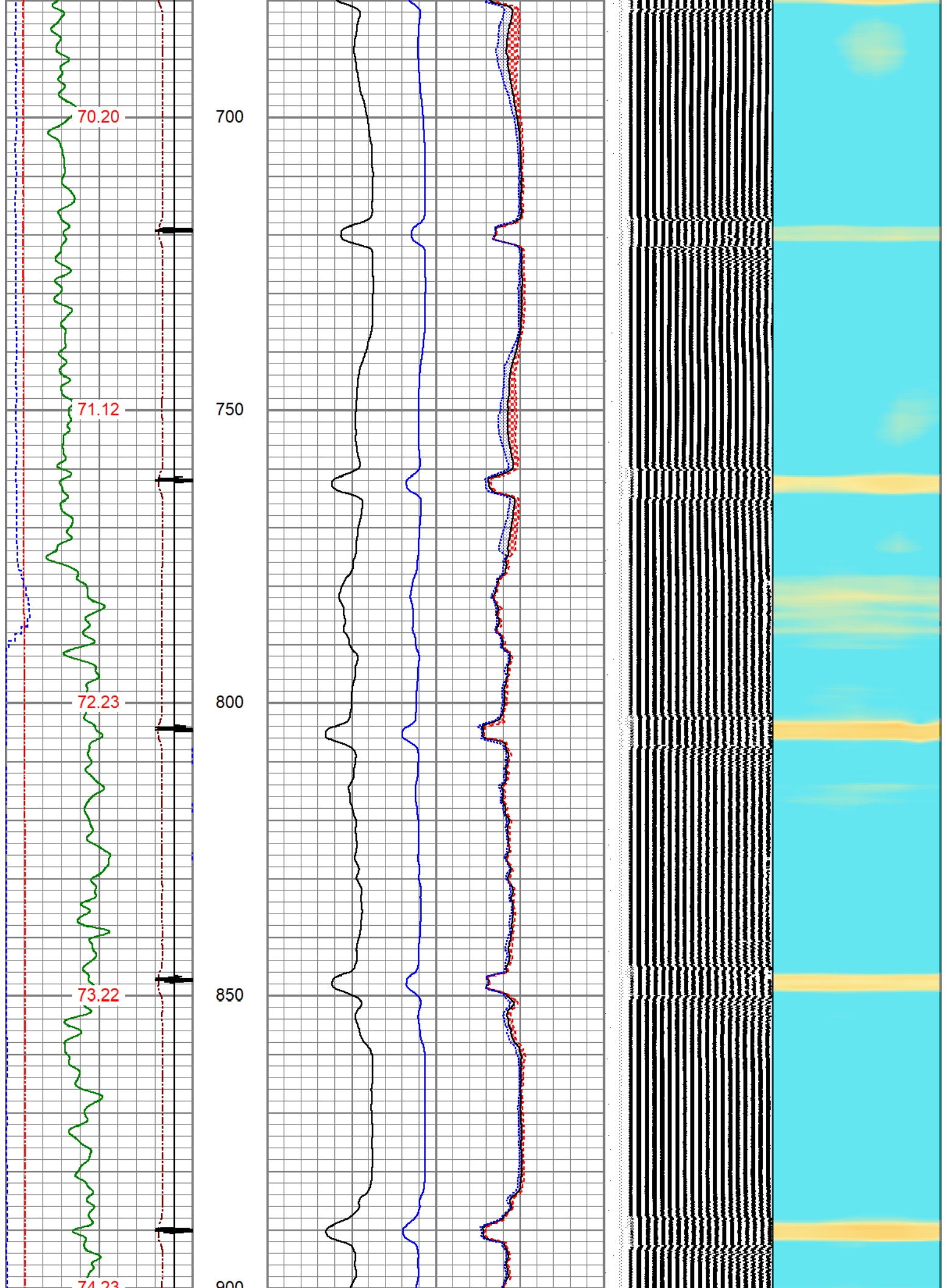
3Ft Travel Time 575 (usec) 175	3' Amplitude 0 (mV) 100	Sector Amplitude Average	VDL (usec) 1200	1 Sector Map 8
-9 Collar Locator 1	3' Amplified Amplitude X 5	0 150		
Gamma Ray 0 (GAPI) 150	0 (mV) 20	Sector Amplitude Maximum		
LineTension 0 (lb) 2000	1 BONDIX 0	0 150		
Line Speed -100 (ft/min) 100		Sector Amplitude Minimum		
TEMP (degF)		0 150		

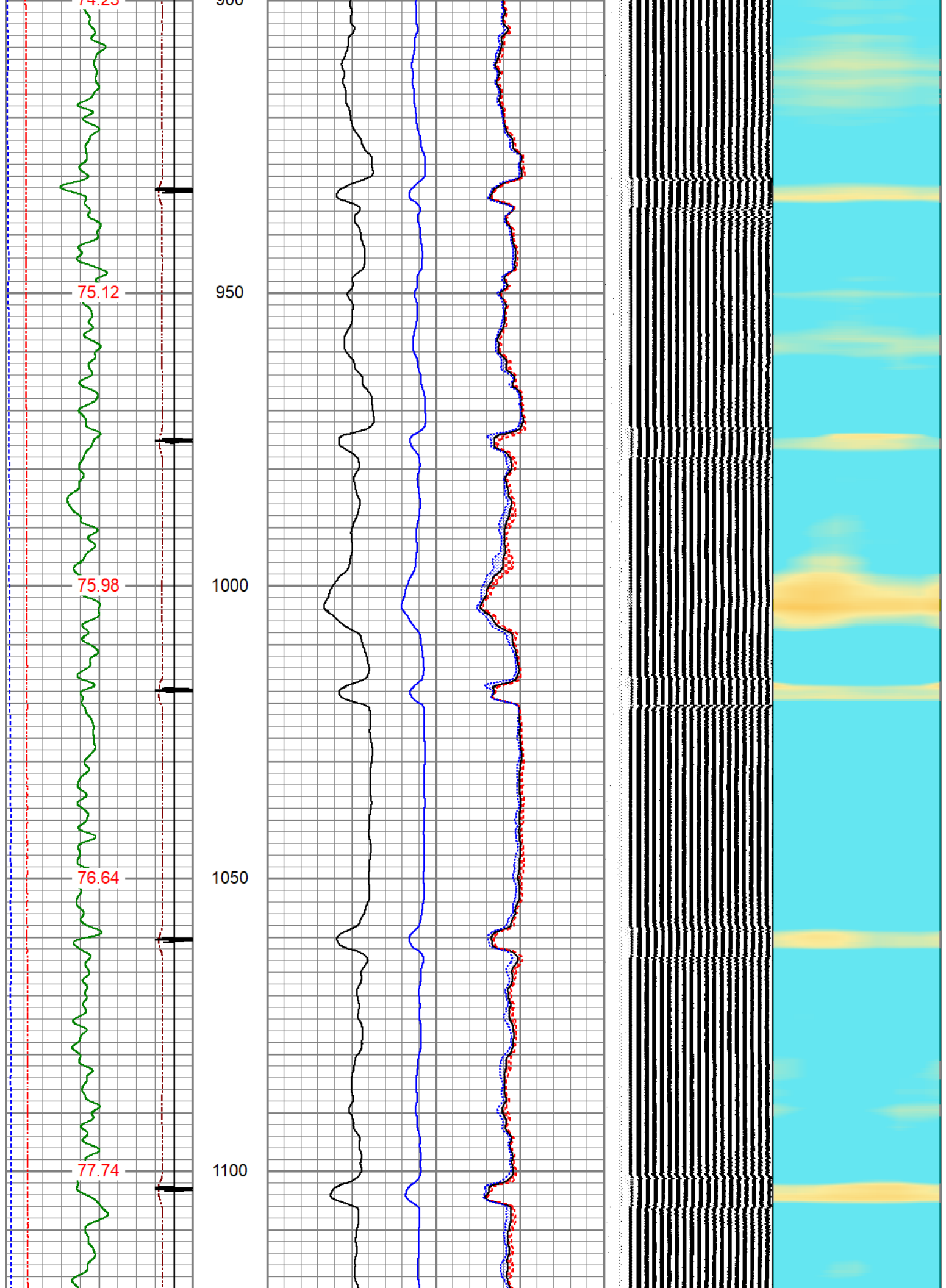


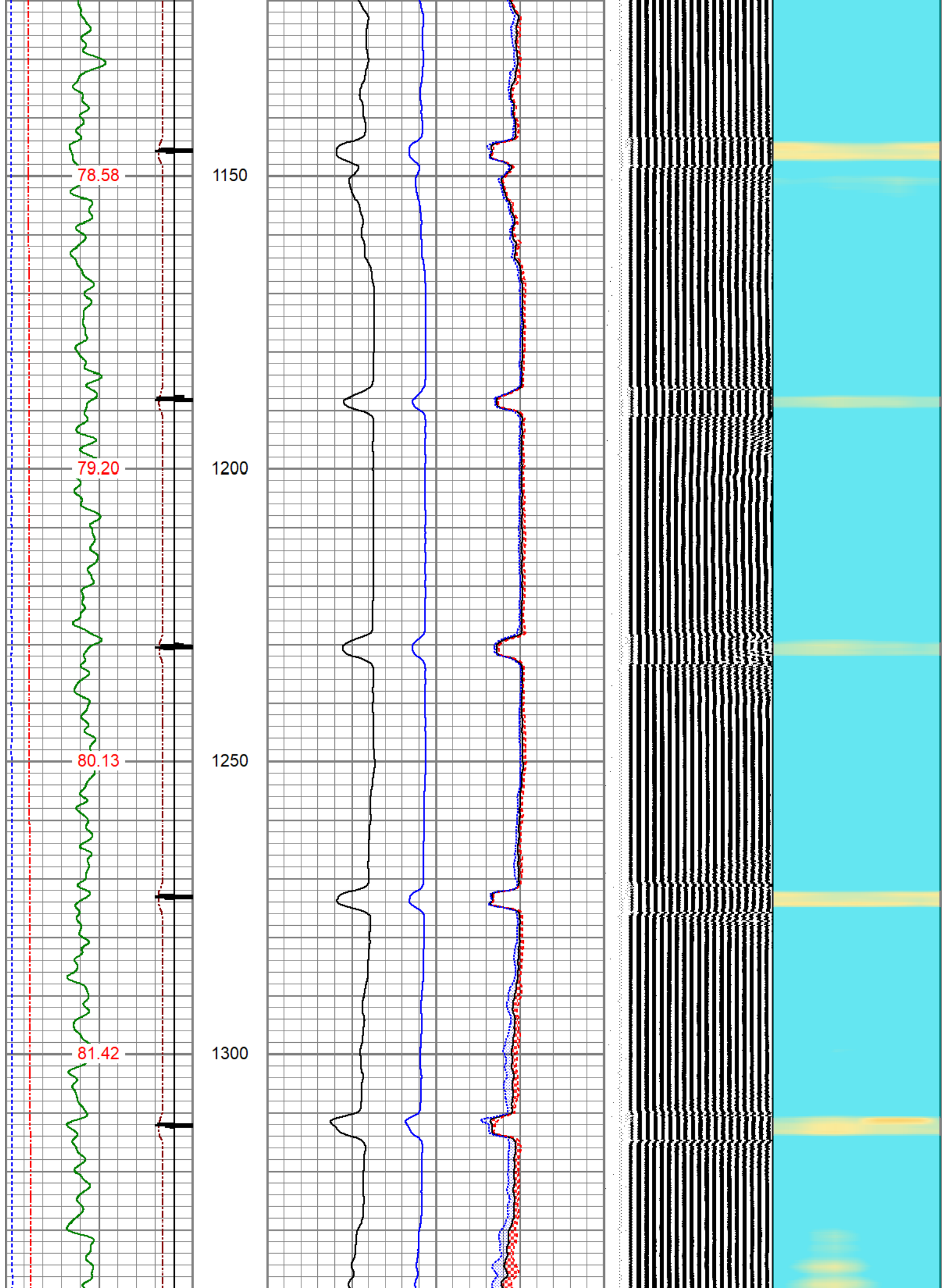


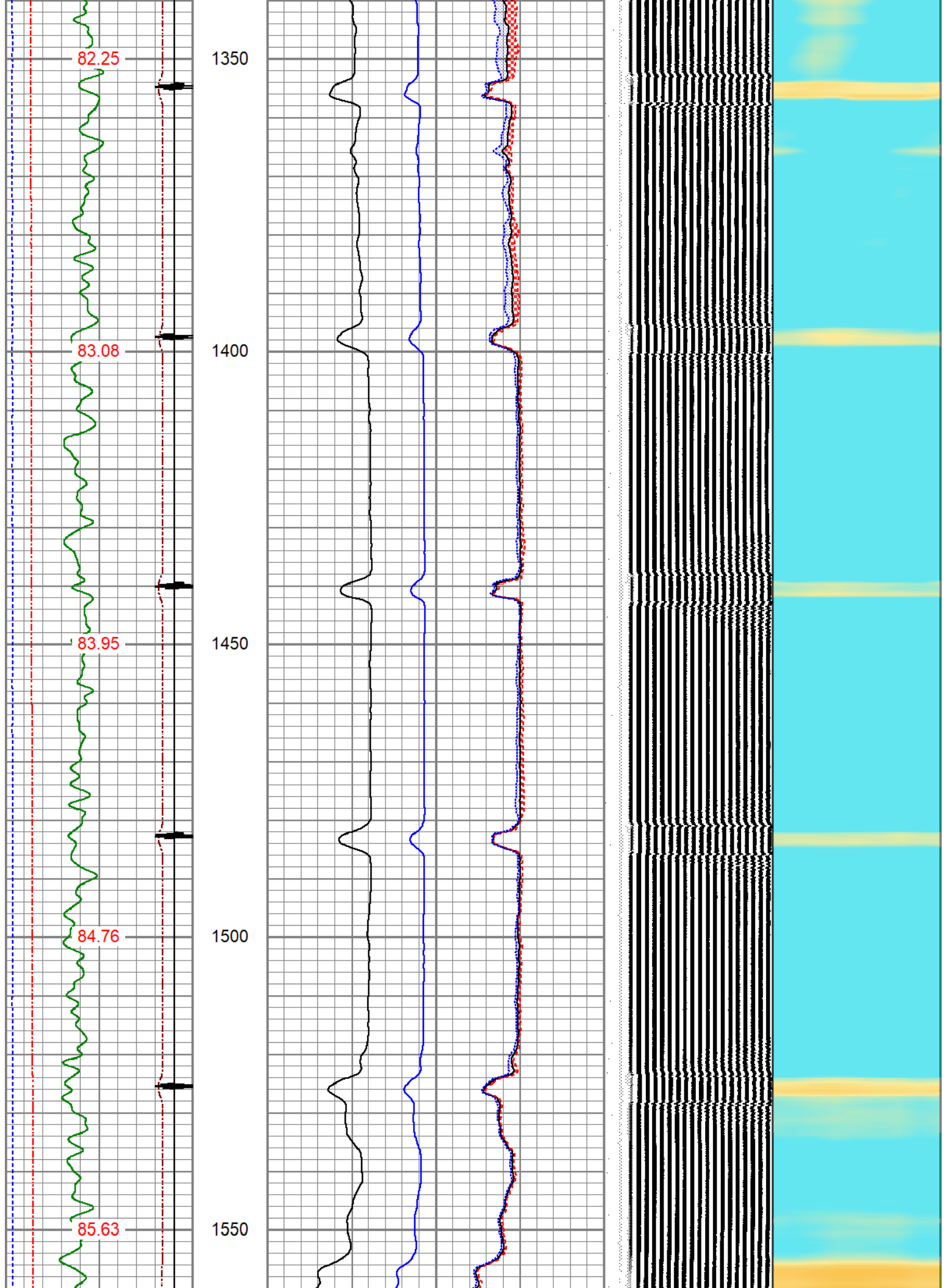


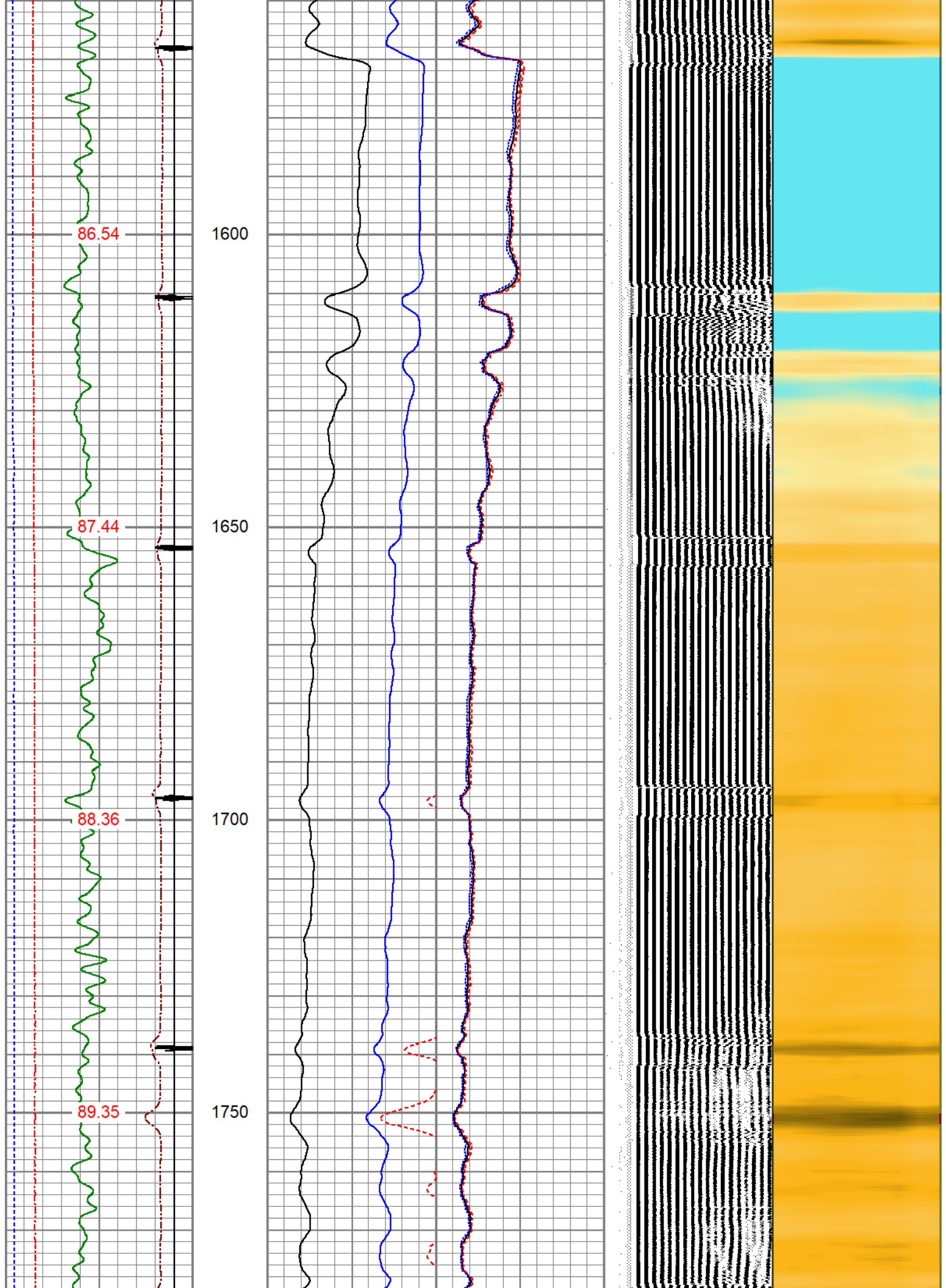


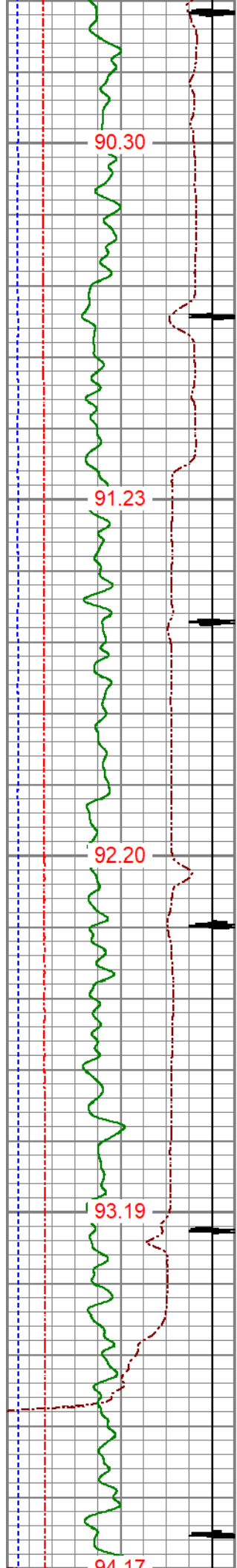












1800

1850

1900

1950

2000

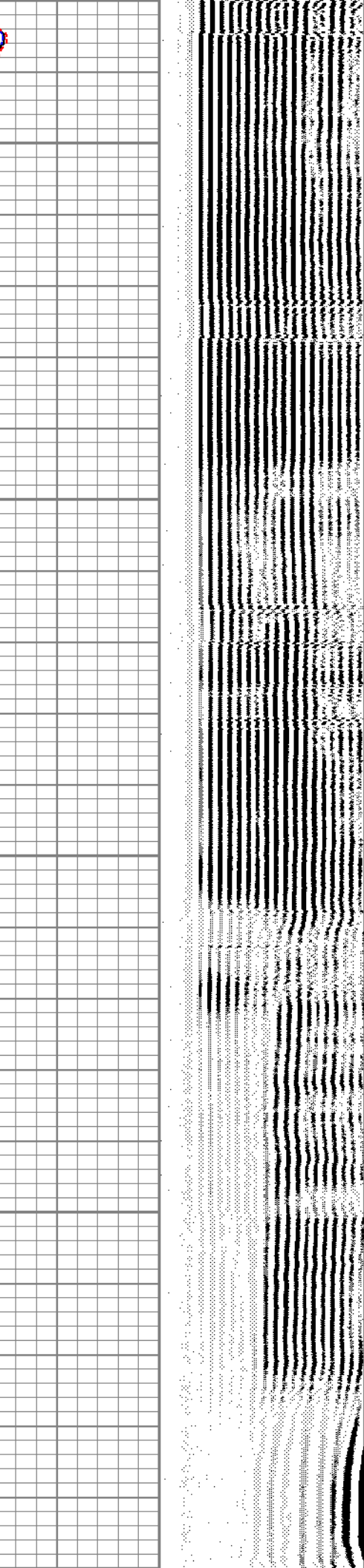
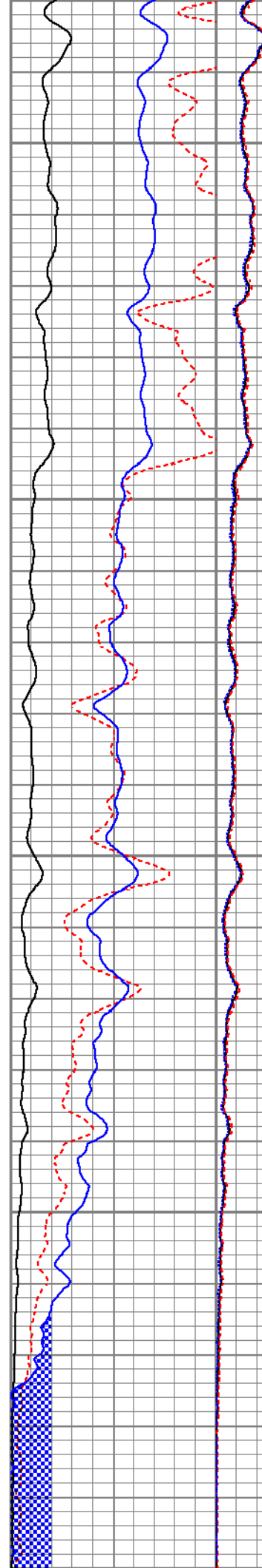
90.30

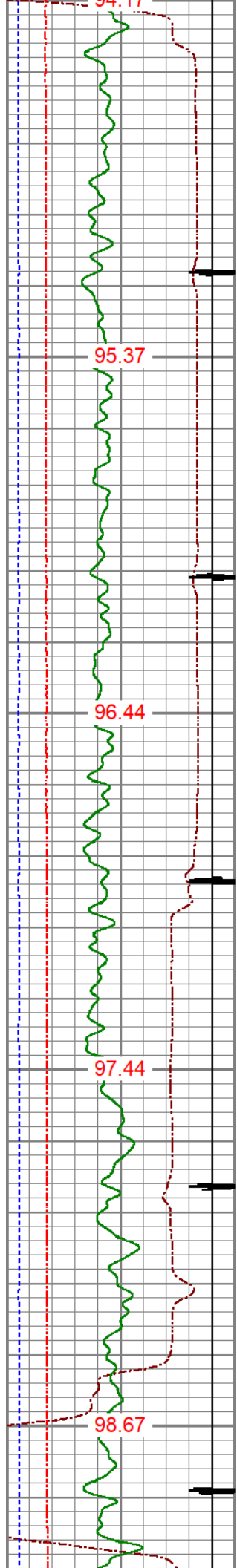
91.23

92.20

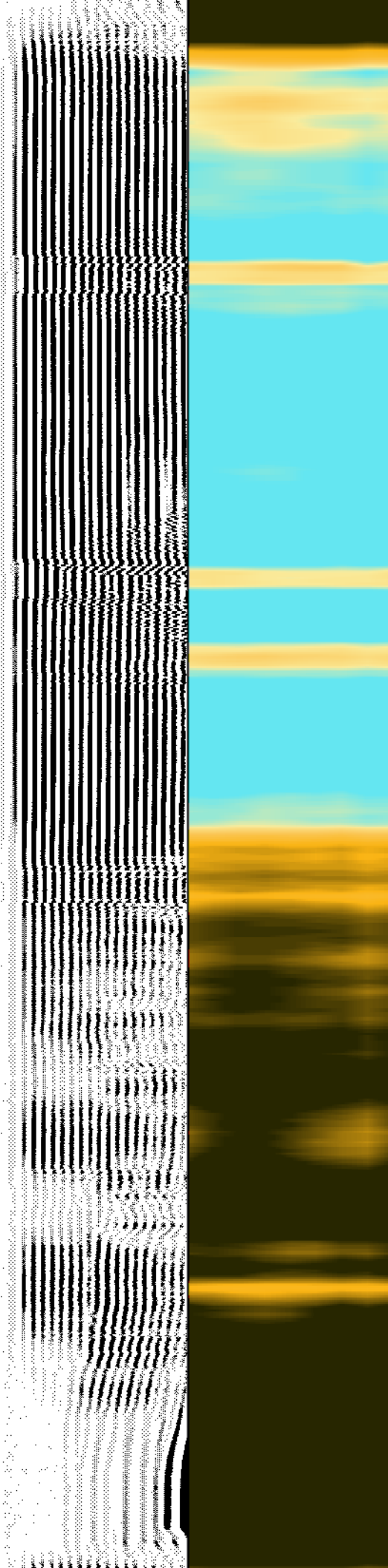
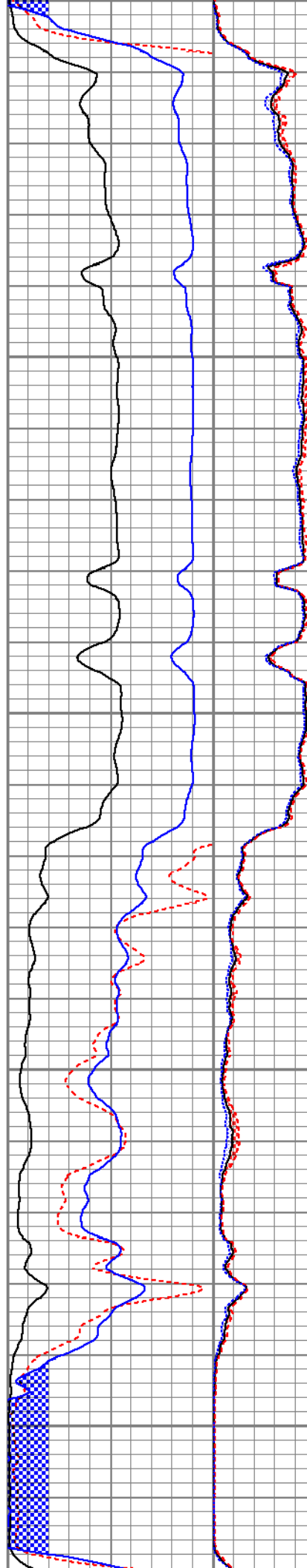
93.19

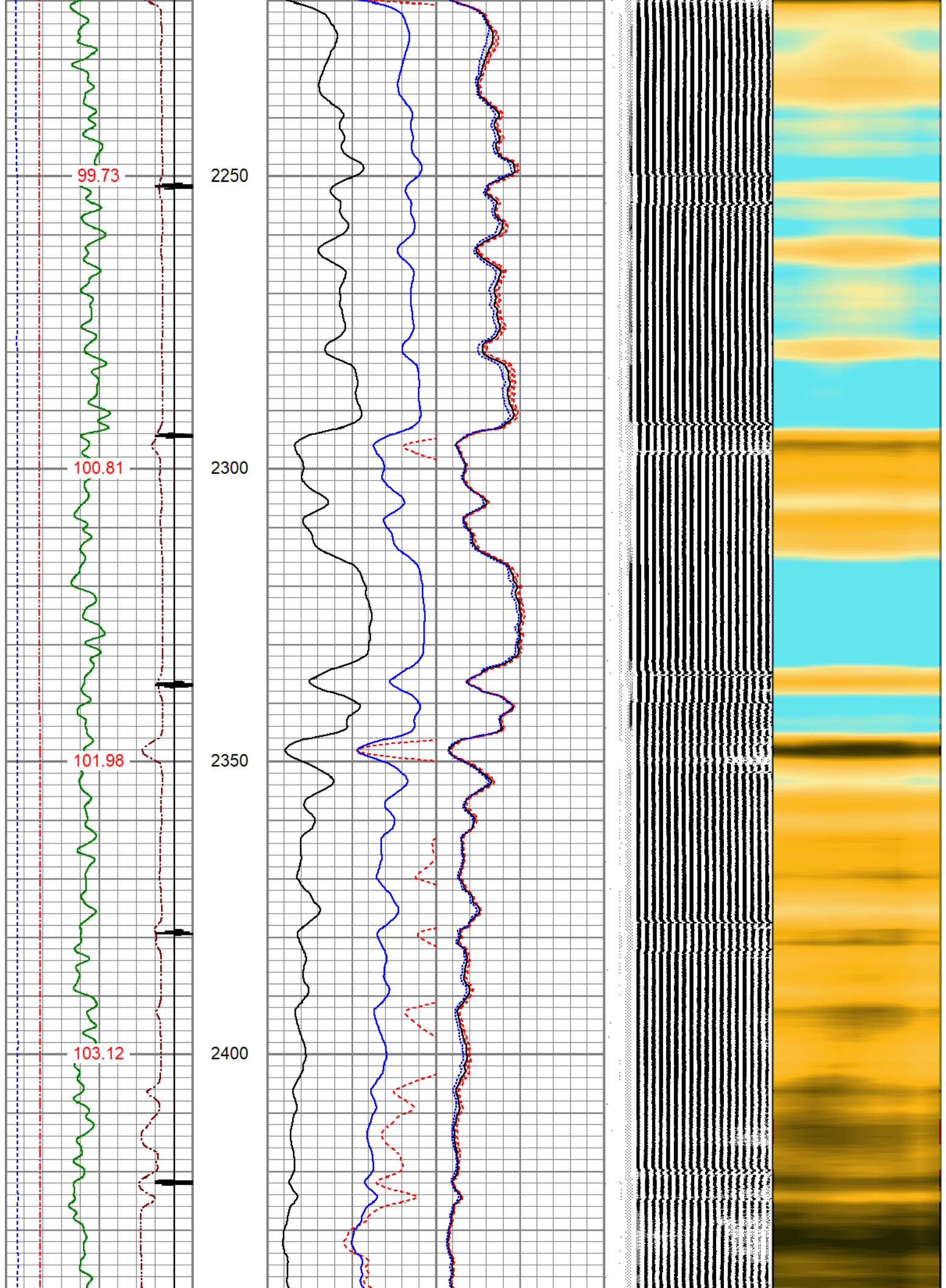
94.17

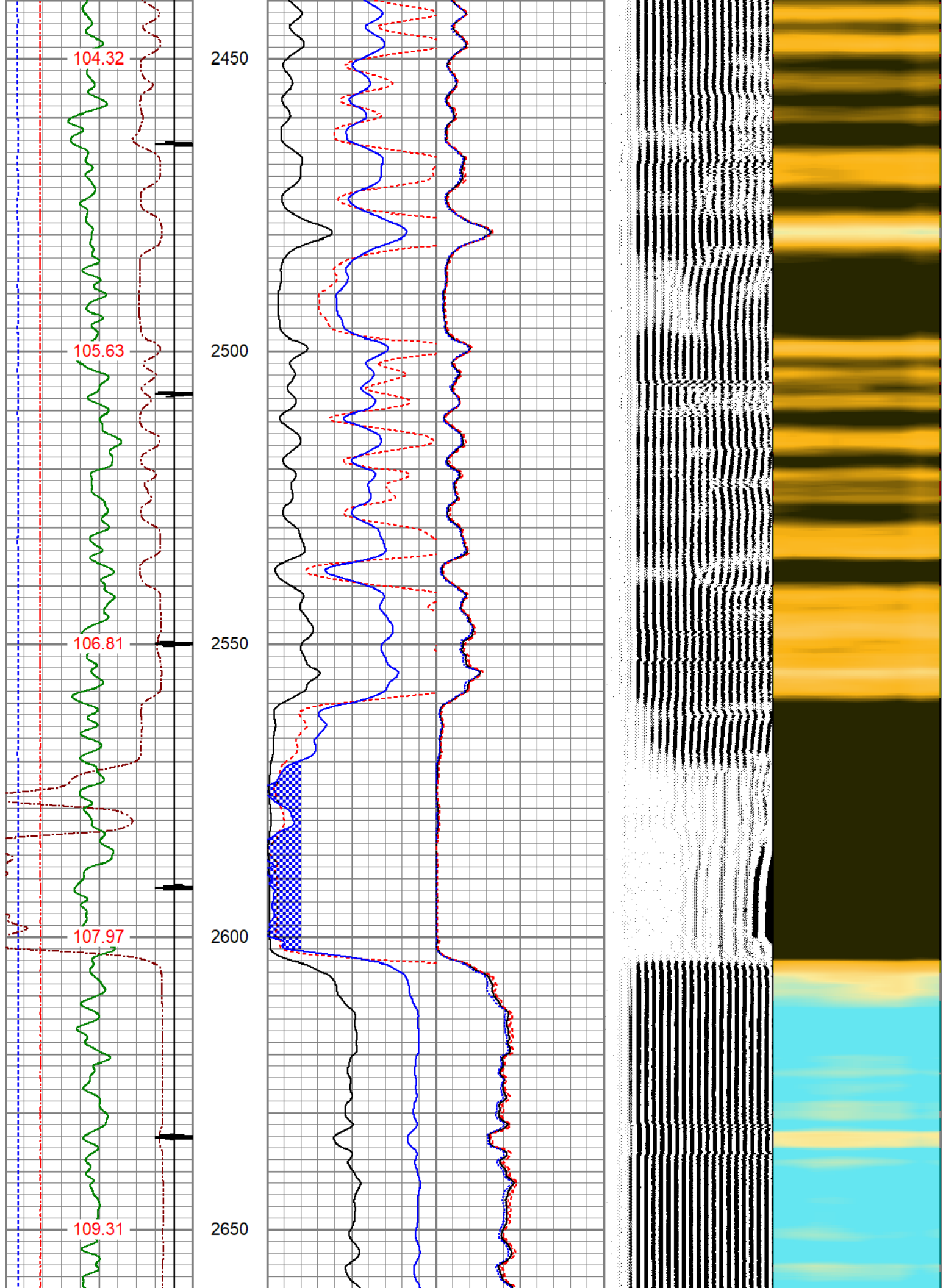


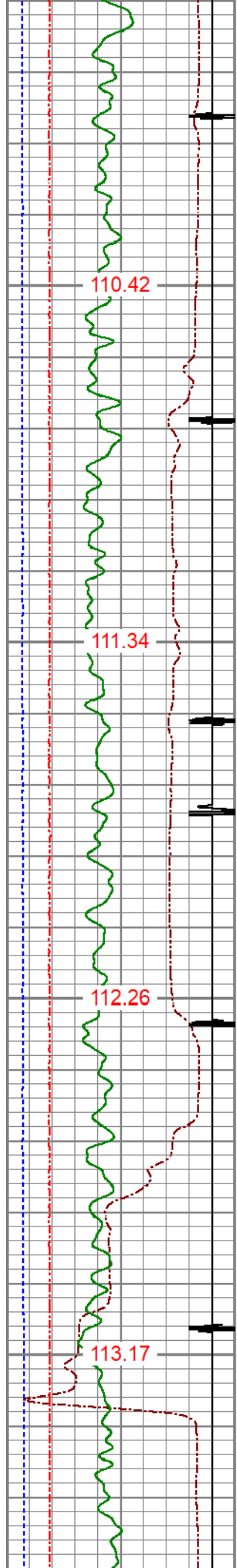


2000
2050
2100
2150
2200







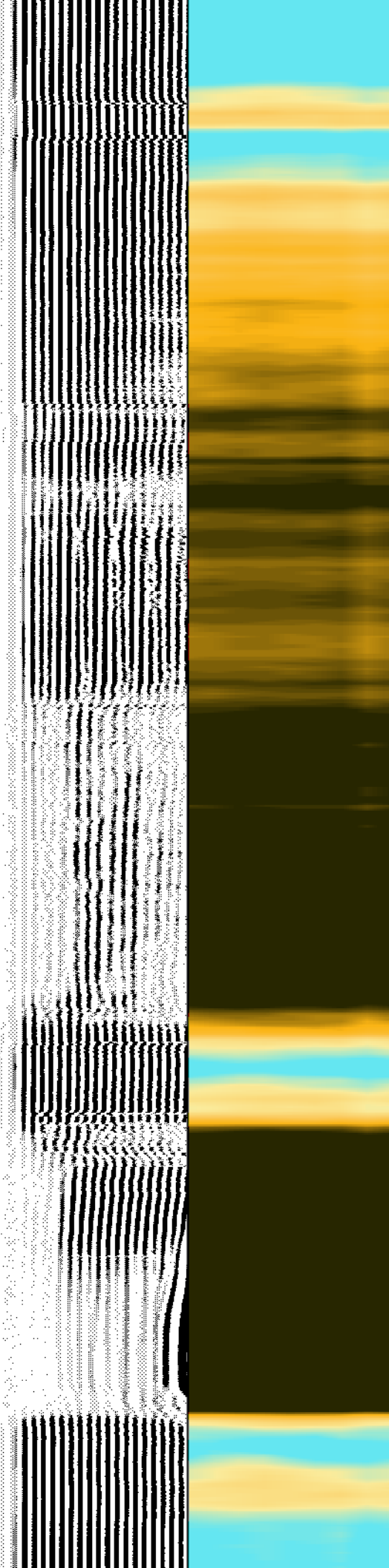
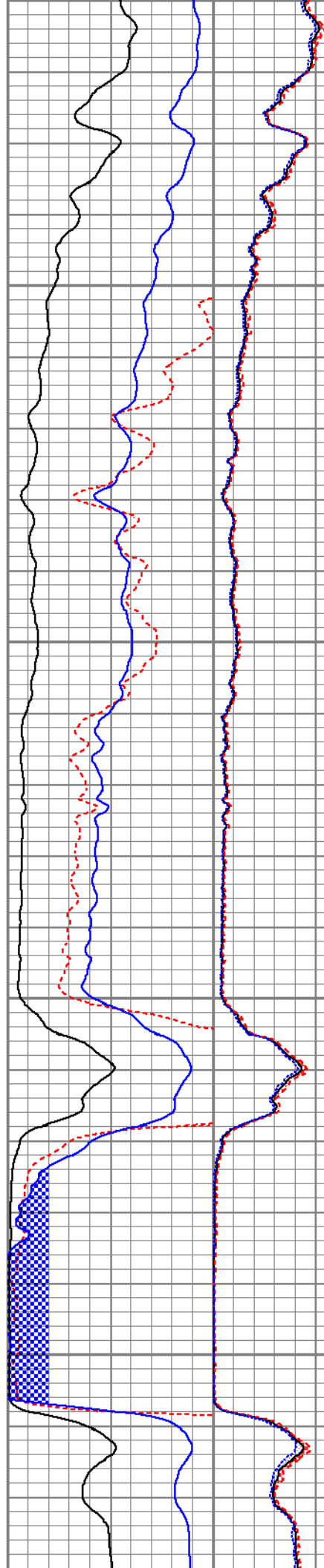


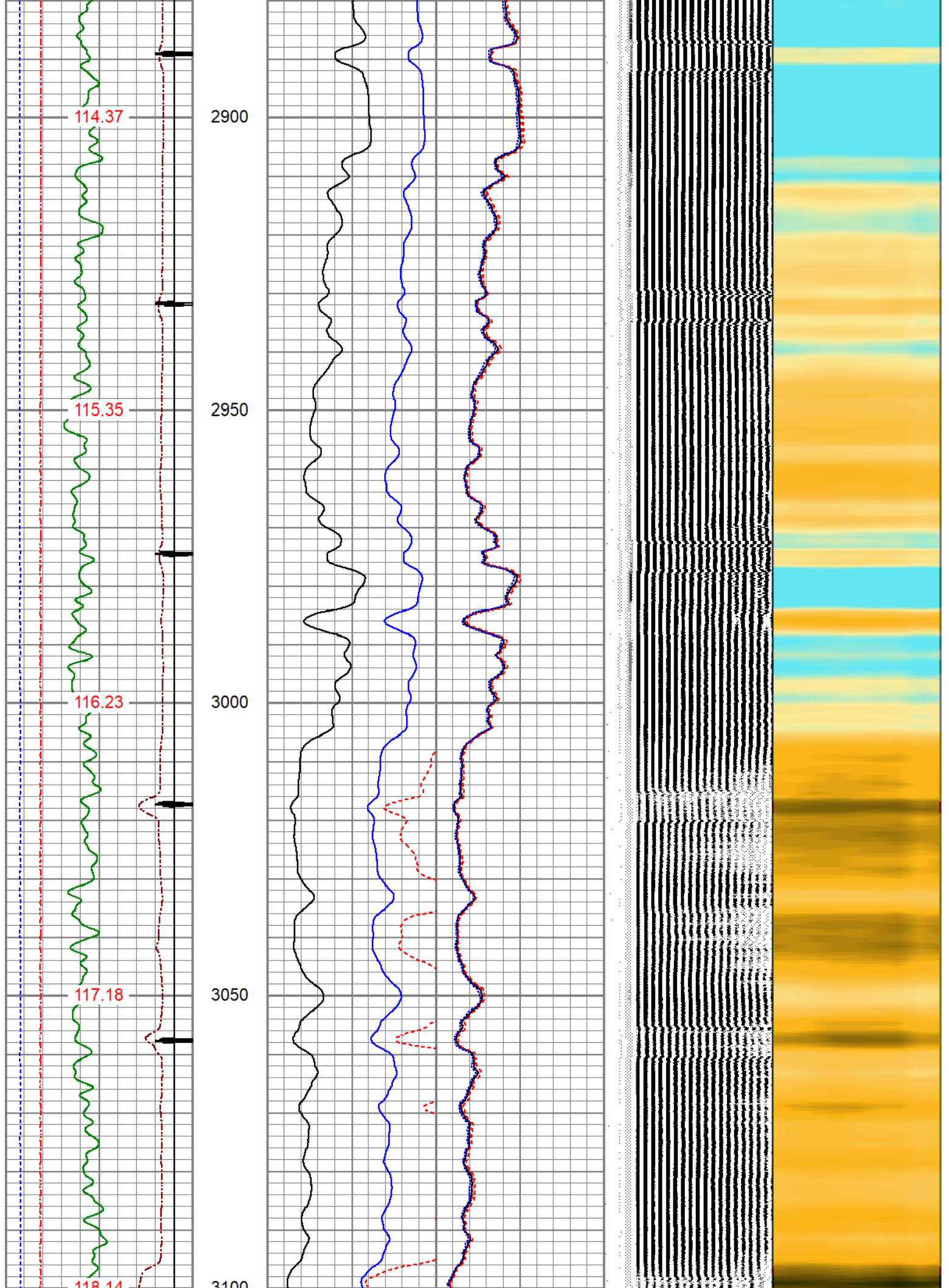
2700

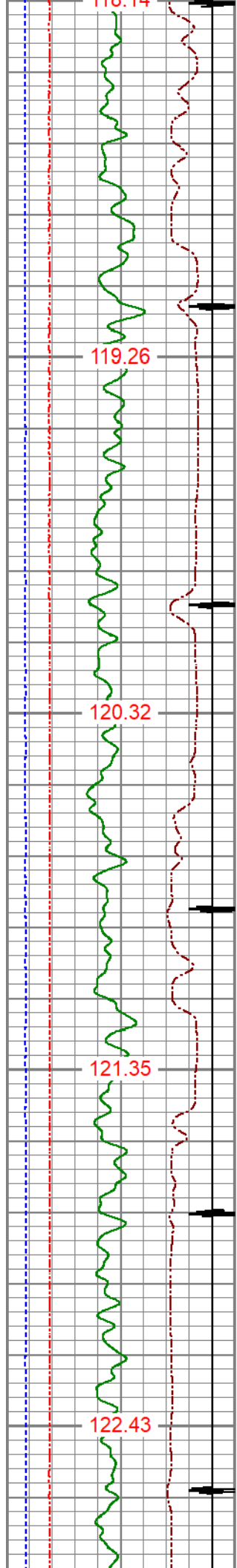
2750

2800

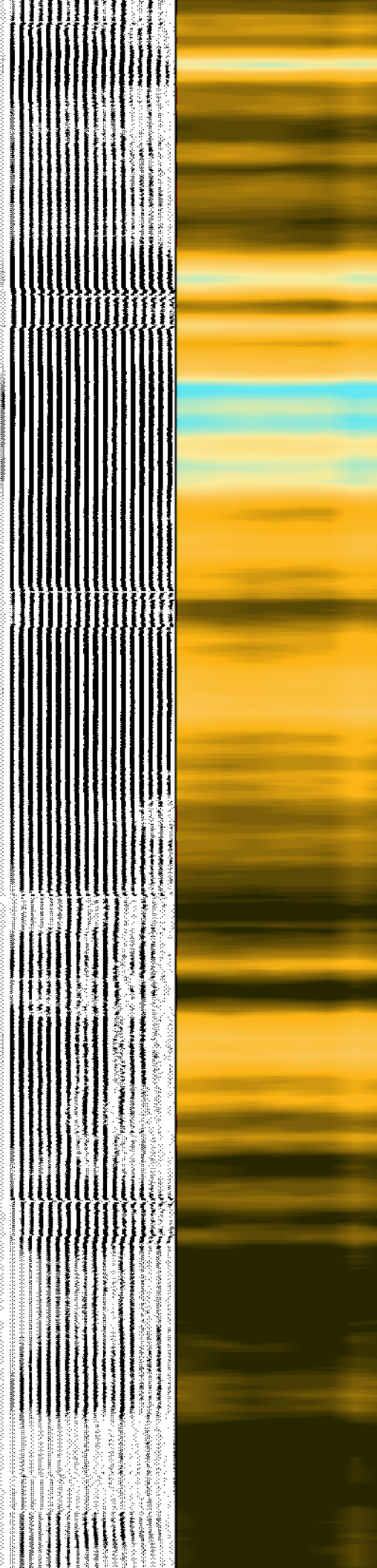
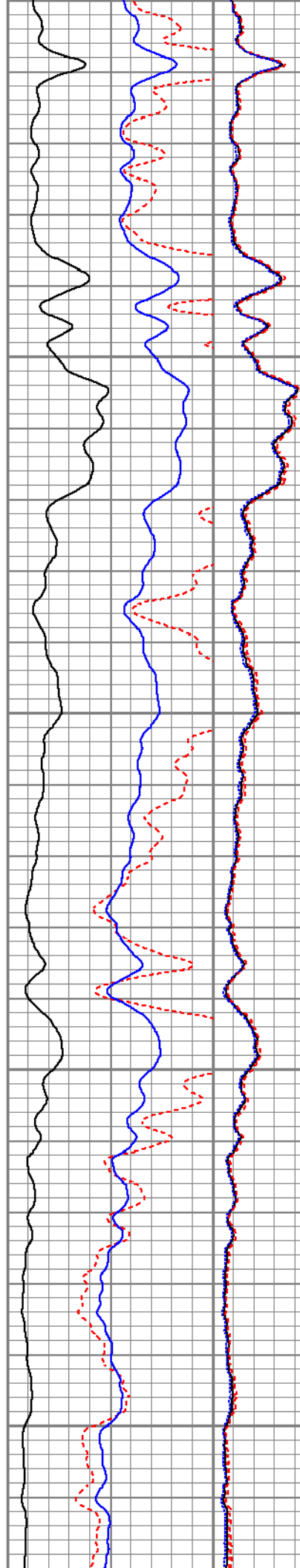
2850

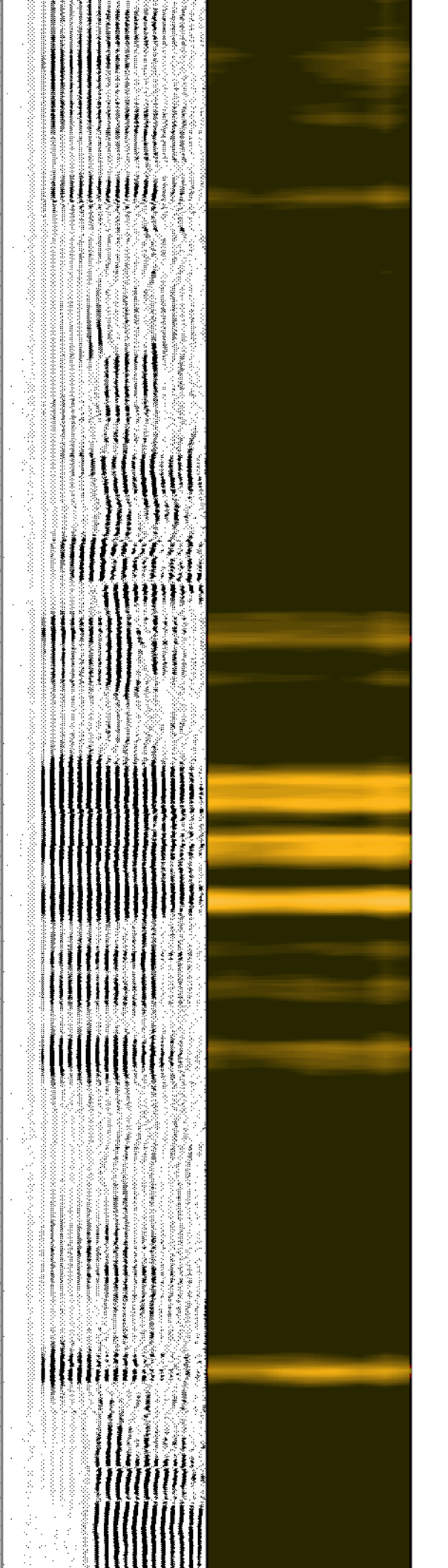
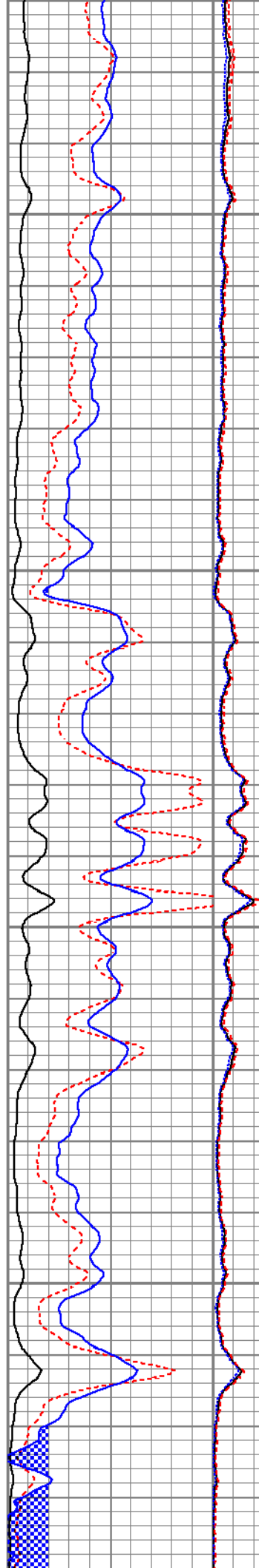
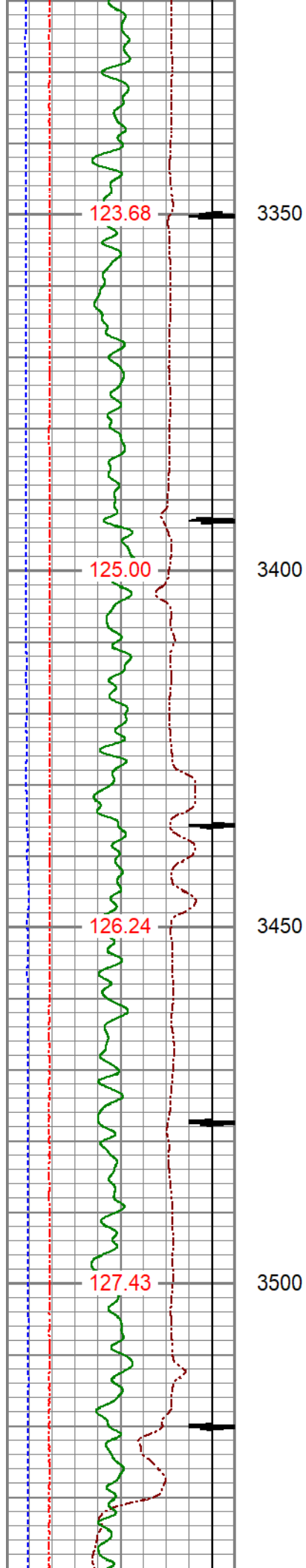


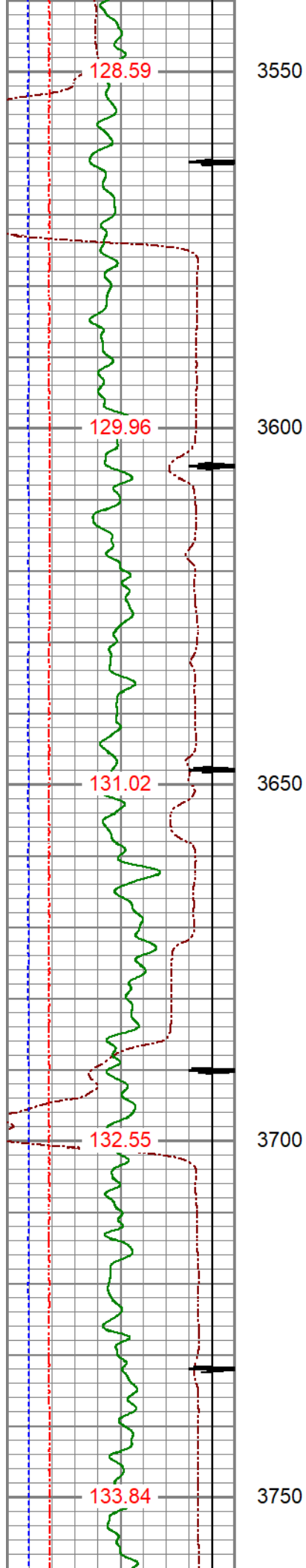




3100
3150
3200
3250
3300







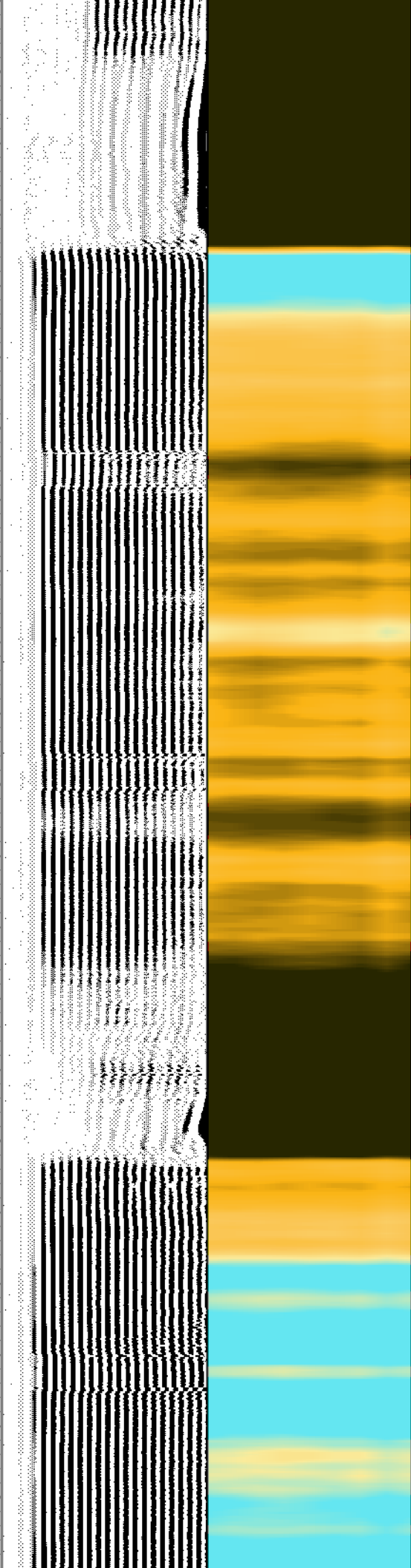
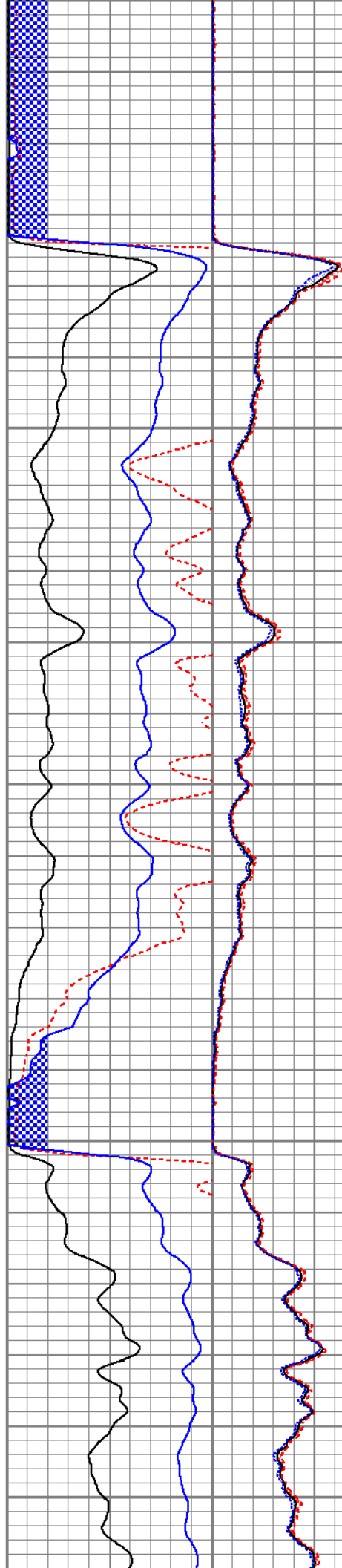
3550

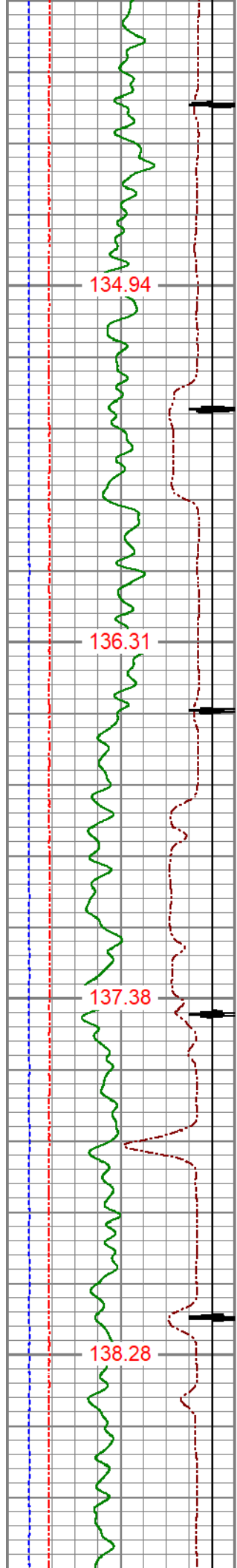
3600

3650

3700

3750



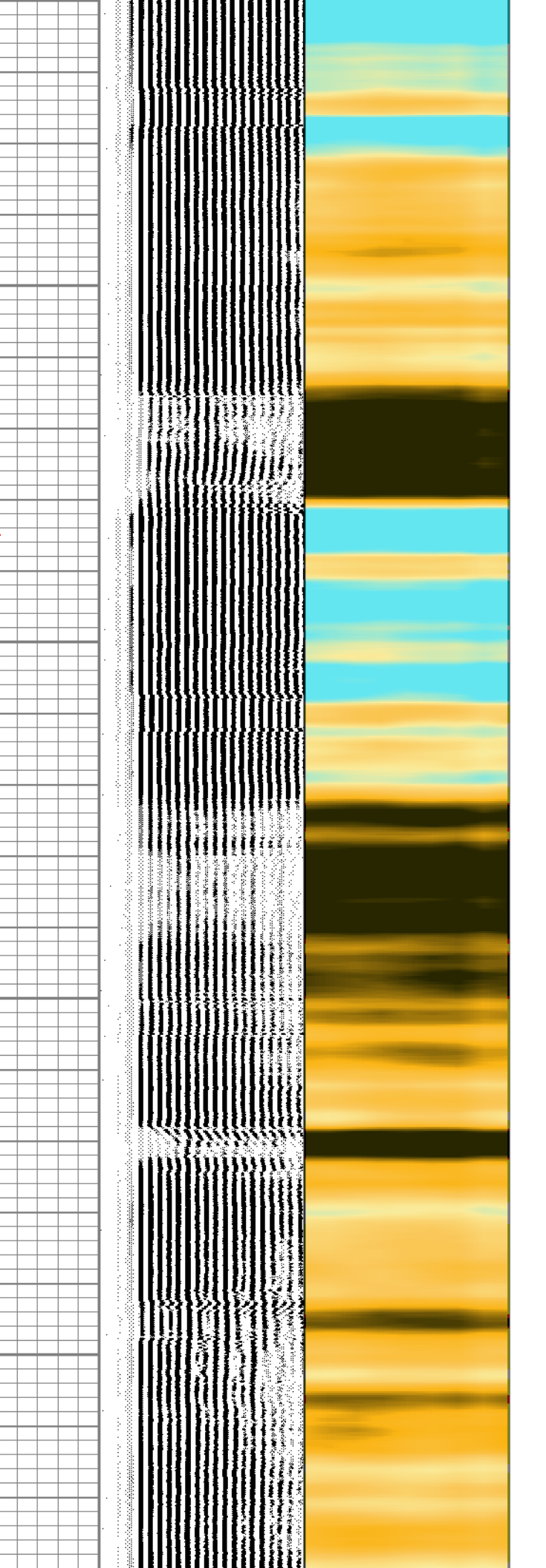
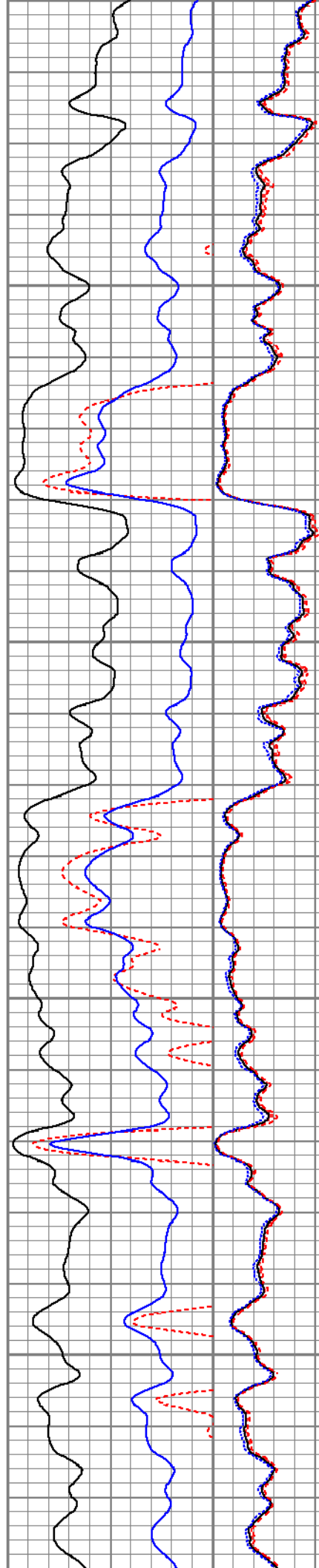


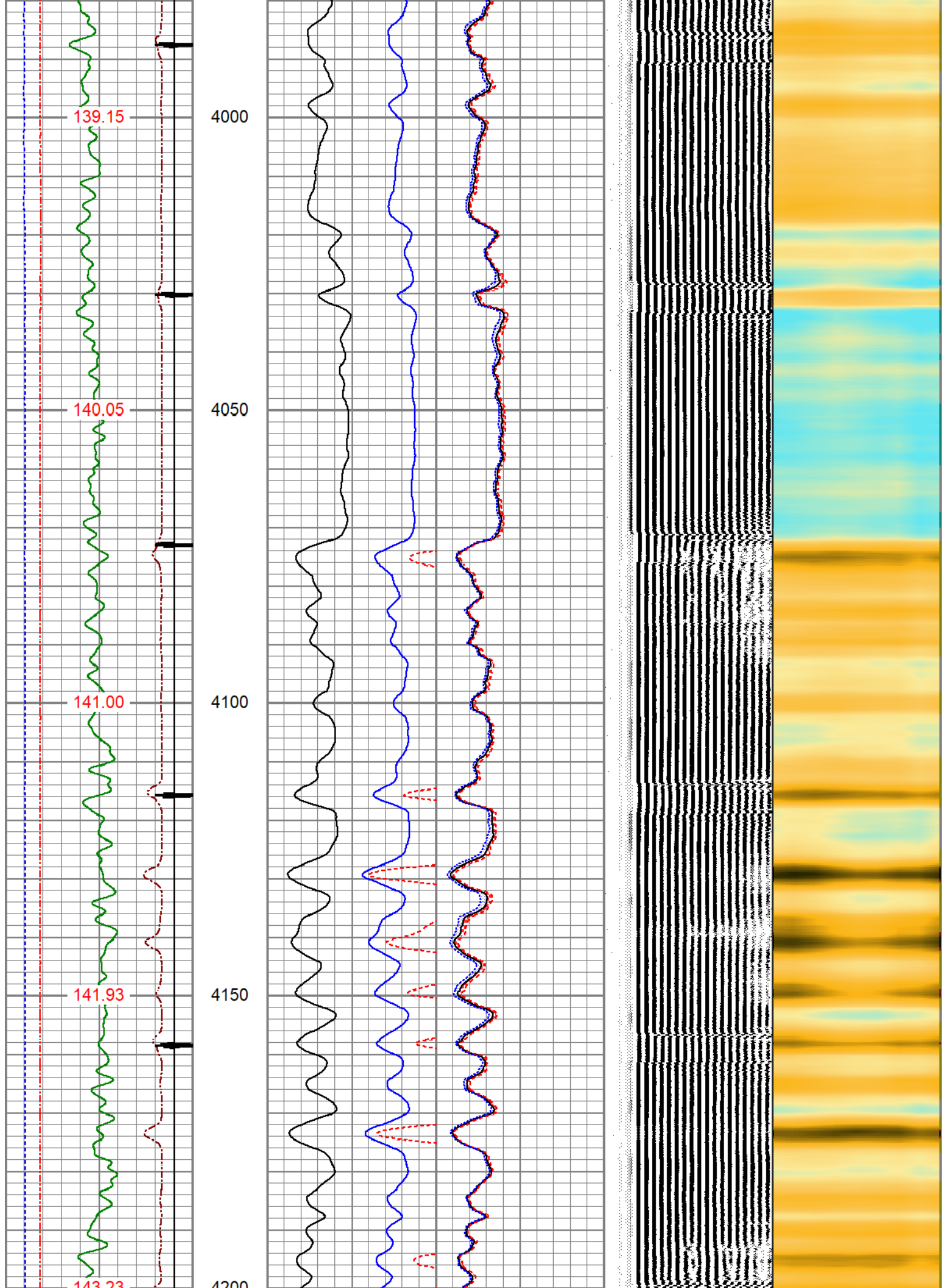
3800

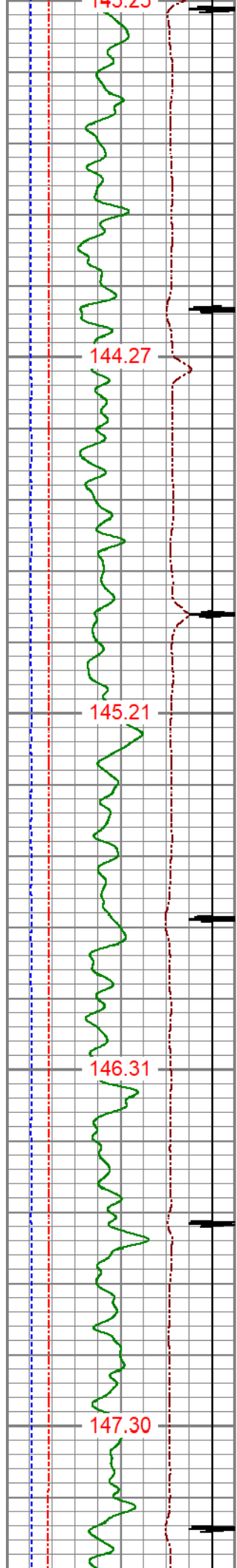
3850

3900

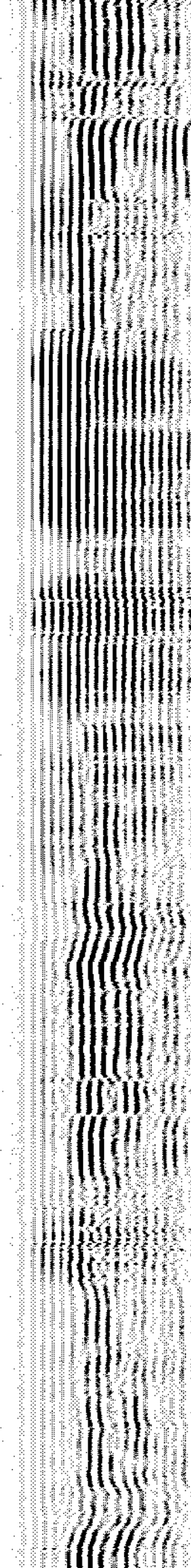
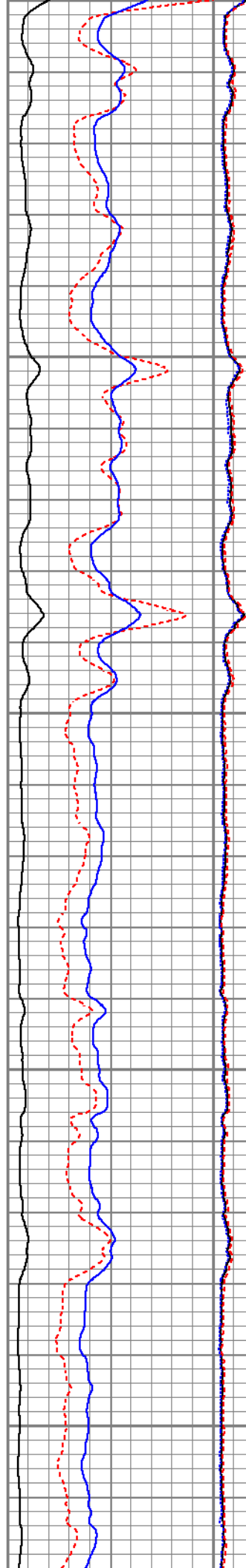
3950

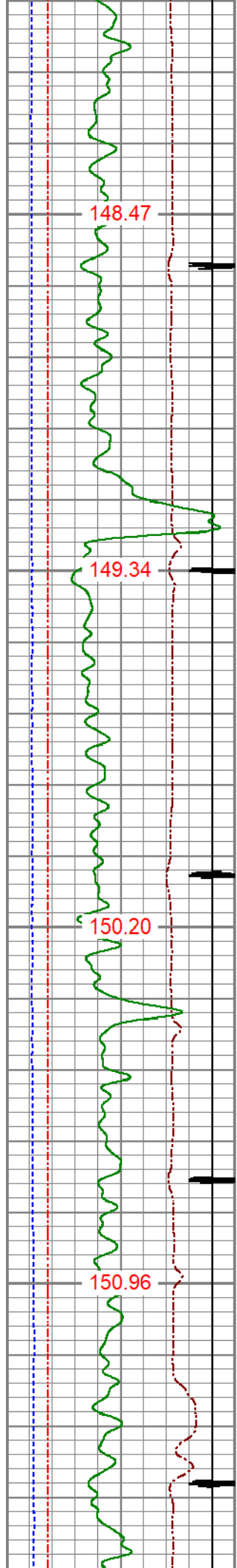






4200
4250
4300
4350
4400



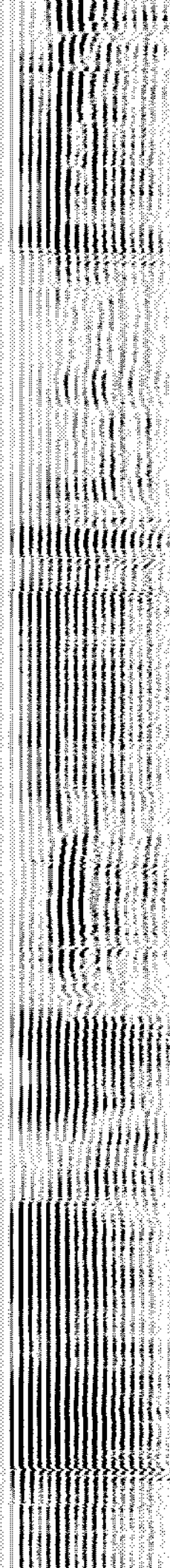
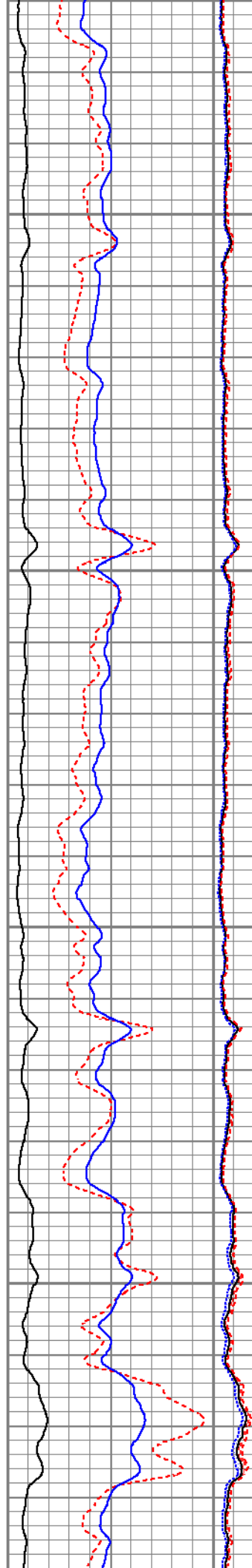


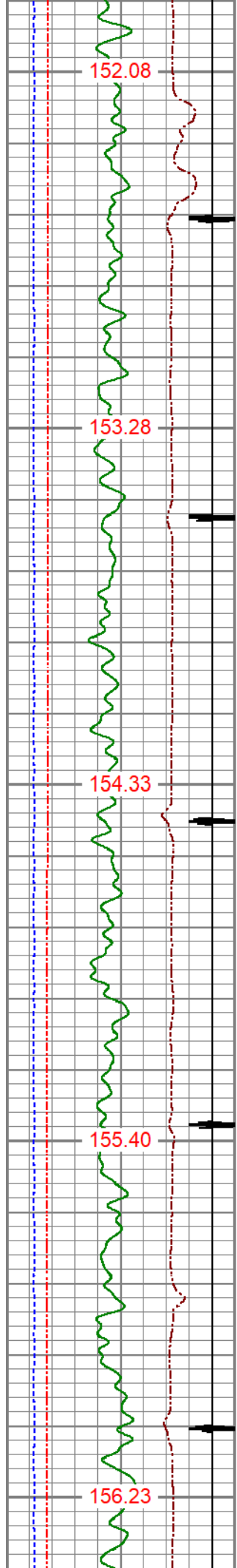
4450

4500

4550

4600





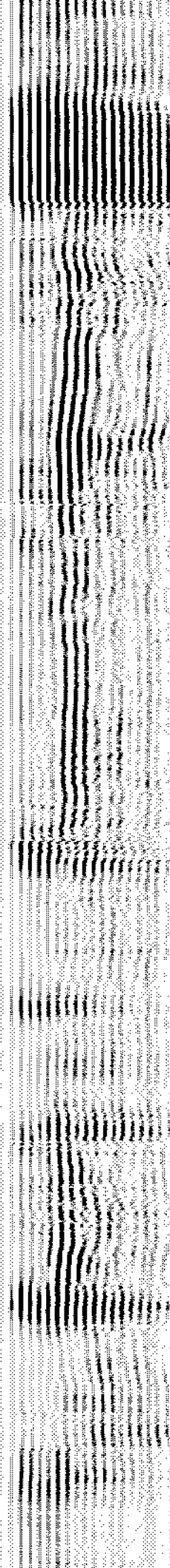
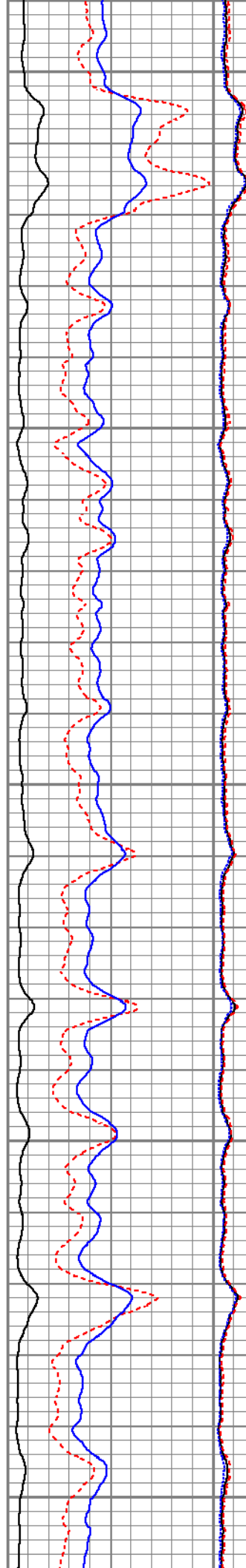
4650

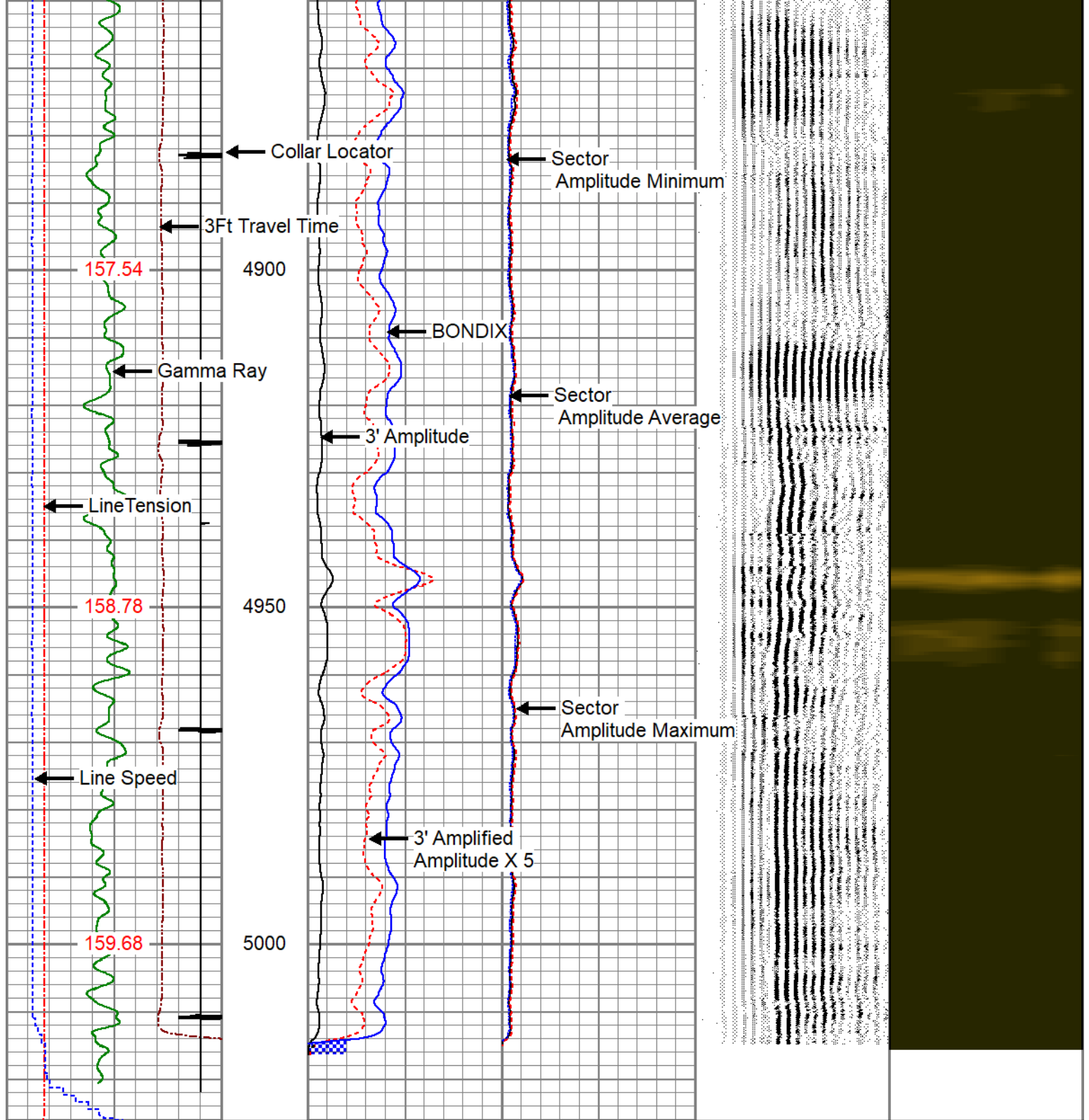
4700

4750

4800

4850






3Ft Travel Time	3' Amplitude	Sector Amplitude Average	VDL	1	Sector Map	8
575 (usec) 175	0 (mV) 100	0 150	200 (usec) 1200			
-9 Collar Locator 1	3' Amplified Amplitude X 5	0 150				
Gamma Ray	0 (mV) 20	Sector Amplitude Maximum				
0 (GAPI) 150	1 BONDIX 0	0 150				
Line Tension		Sector Amplitude Minimum				
0 (lb) 2000		0 150				
Line Speed						
-100 (ft/min) 100						
TEMP						
(degF)						

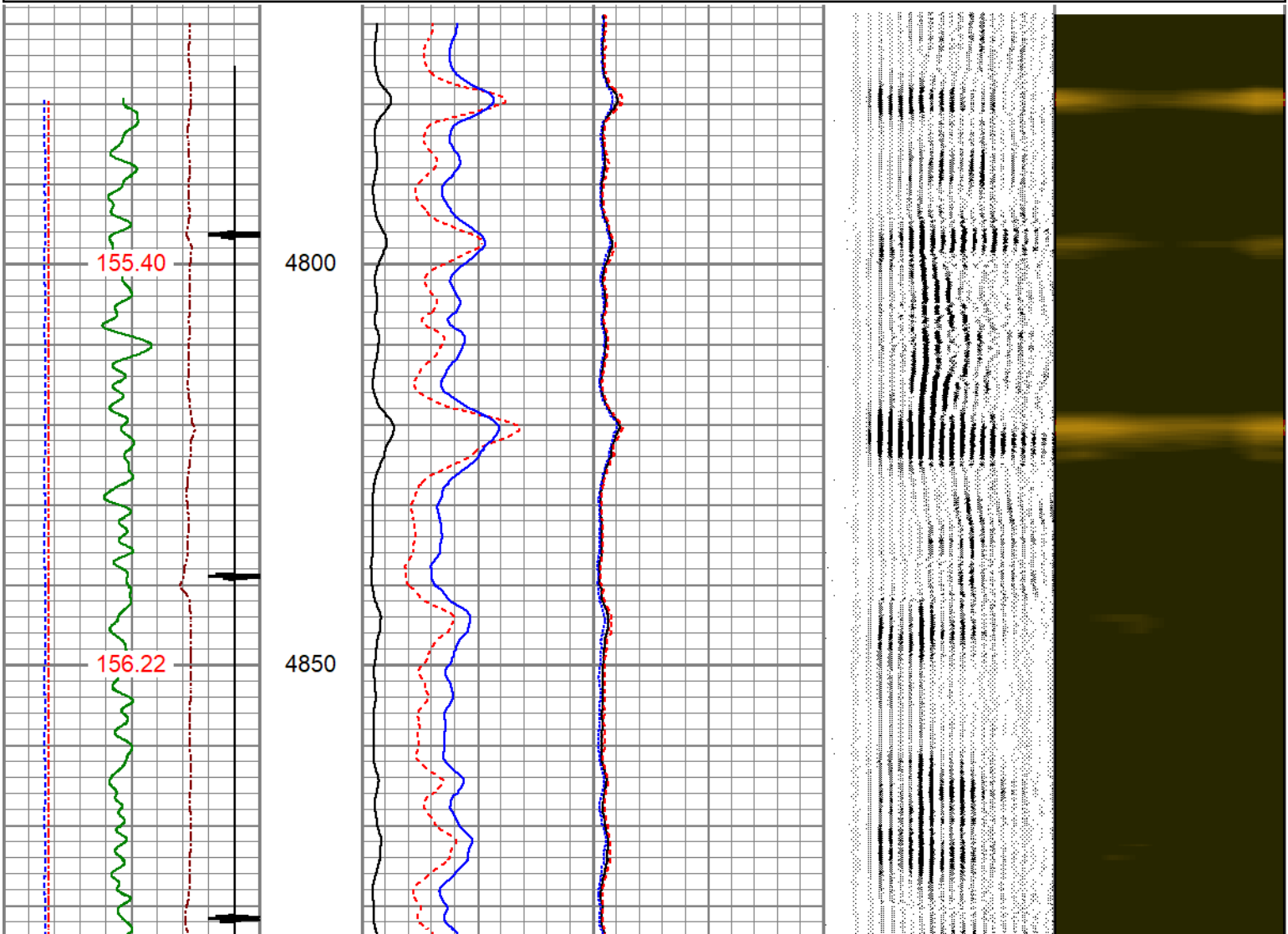


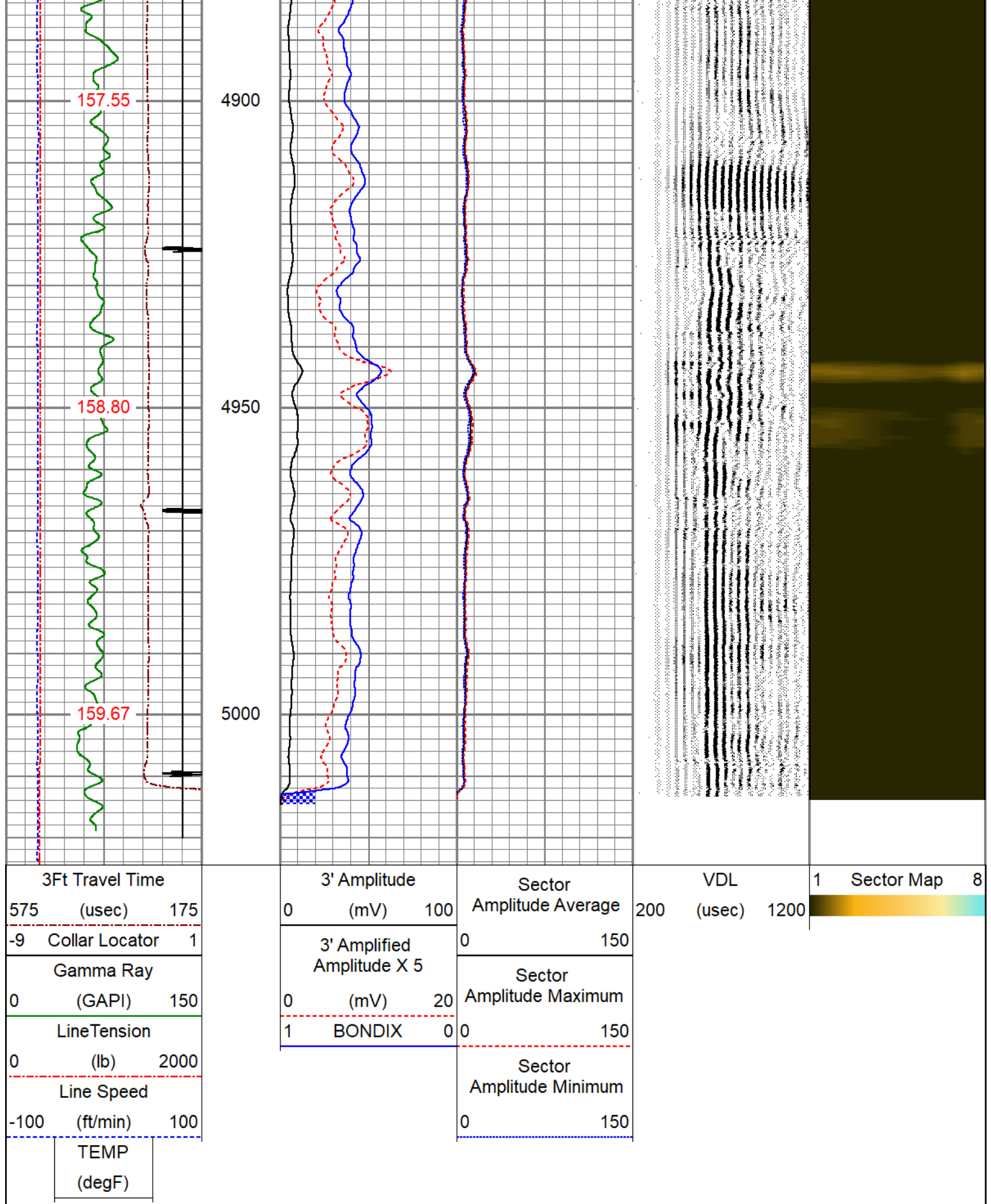
REPEAT SECTION

ZERO PSI APPLIED AT SURFACE

Database File oxy_dechant x01-03_rcbl_11-1-24.db
Dataset Pathname pass1
Presentation Format pinr_scbl
Dataset Creation Fri Nov 01 09:03:08 2024
Charted by Depth in Feet scaled 1:240

3Ft Travel Time			3' Amplitude			Sector			VDL			1 Sector Map 8			
575	(usec)	175	0	(mV)	100	Amplitude Average			200	(usec)	1200				
-9	Collar Locator	1	3' Amplified Amplitude X 5			0 150									
Gamma Ray						Sector Amplitude Maximum									
0	(GAPI)	150	0	(mV)	20										
LineTension			1	BONDIX	0	0 150									
0	(lb)	2000				Sector Amplitude Minimum									
Line Speed						0 150									
-100	(ft/min)	100													
TEMP															
(degF)															





Calibration Report

Database File oxy_dechant x01-03_rcbl_11-1-24.db
Dataset Pathname pass2
Dataset Creation Fri Nov 01 09:08:02 2024

Gamma Ray Calibration Report

Serial Number: 140181
 Tool Model: 275 Probe GCT
 Performed: Tue Apr 11 10:14:32 2023

 Calibrator Value: 1.0 GAPI

 Background Reading: 0.0 cps
 Calibrator Reading: 1.0 cps

 Sensitivity: 0.5500 GAPI/cps

Segmented Cement Bond Log Calibration Report

Serial Number: FW1304-34
 Tool Model: RBL-DC

 Calibration Casing Diameter: 4.500 in
 Calibration Depth: 22.562 ft

Master Calibration, performed Fri Nov 01 08:03:37 2024:

	Raw (v)		Calibrated (mv)		Results	
	Zero	Cal	Zero	Cal	Gain	Offset
3'	0.011	1.532	0.800	81.196	52.853	0.231
CAL	1.631	1.608				
5'	0.033	1.704	0.800	81.196	48.099	-0.775
SUM						
S1	0.003	1.539	0.000	100.000	65.108	-0.227
S2	0.017	1.677	0.000	100.000	60.252	-1.039
S3	0.016	1.676	0.000	100.000	60.252	-0.980
S4	0.016	1.706	0.000	100.000	59.187	-0.964
S5	0.015	1.635	0.000	100.000	61.741	-0.949
S6	0.016	1.548	0.000	100.000	65.271	-1.057
S7	0.017	1.452	0.000	100.000	69.681	-1.155
S8	0.016	1.490	0.000	100.000	67.826	-1.072

Air Zero Calibration, performed Fri Nov 01 08:03:20 2024:

	Raw (v)		Calibrated (v)		Results	
	Zero		Zero		Offset	
3'	0.000		0.000		0.000	
5'	0.000		0.000		0.000	
SUM						
S1	0.000		0.000		0.000	
S2	0.000		0.000		0.000	
S3	0.000		0.000		0.000	
S4	0.000		0.000		0.000	
S5	0.000		0.000		0.000	
S6	0.000		0.000		0.000	
S7	0.000		0.000		0.000	
S8	0.000		0.000		0.000	



Company ANADARKO PETROLEUM CORP
 Well DECHANT X 01-03
 Field WATTENBERG



Field	WATFENBERG
County	WELD
State	CO