

Inspection/Audit Photos

Location: TEP ROCKY MOUNTAIN LLC FEDERAL-67S96W/11SWNE (GM 32-11 PAD)

Location ID: 334969

Date: 02/11/2025



Feb 11, 2025 at 2:10:41 PM
+39.454508,-108.075852 ±4.17m
De Beque



Feb 11, 2025 at 2:22:50 PM
+39.454440,-108.075651 ±5.24m
De Beque

Photo # 4829 Entrance to location

Photo # 4844 Location

Inspection/Audit Photos

Location: TEP ROCKY MOUNTAIN LLC FEDERAL-67S96W/11SWNE (GM 32-11 PAD)

Location ID: 334969

Date: 02/11/2025



Photo # 4830 Location



Photo # 4841 Location

Inspection/Audit Photos

Location: TEP ROCKY MOUNTAIN LLC FEDERAL-67S96W/11SWNE (GM 32-11 PAD)

Location ID: 334969

Date: 02/11/2025



Feb 11, 2025 at 2:48:36 PM
+39.454507,-108.075914 ±3.87m
De Beque



Feb 11, 2025 at 2:49:14 PM
+39.454325,-108.075865 ±4.04m
De Beque

Photo # 4877 NW corner of location

Photo # 4878 SW corner of location

Inspection/Audit Photos

Location: TEP ROCKY MOUNTAIN LLC FEDERAL-67S96W/11SWNE (GM 32-11 PAD)

Location ID: 334969

Date: 02/11/2025



Photo # 4879 SE corner of location



Photo # 4880 NE corner of location

Inspection/Audit Photos

Location: TEP ROCKY MOUNTAIN LLC FEDERAL-67S96W/11SWNE (GM 32-11 PAD)

Location ID: 334969

Date: 02/11/2025



Photo # 4853 Open ended piping/wildlife hazard/available for entry by wildlife



Photo # 4850 Open ended load line

Inspection/Audit Photos

Location: TEP ROCKY MOUNTAIN LLC FEDERAL-67S96W/11SWNE (GM 32-11 PAD)

Location ID: 334969

Date: 02/11/2025



Photo # 4855 Open ended load line



Photo # 4856 Open ended load line

Inspection/Audit Photos

Location: TEP ROCKY MOUNTAIN LLC FEDERAL-67S96W/11SWNE (GM 32-11 PAD)

Location ID: 334969

Date: 02/11/2025



Photo # 4863 Open ended load line



Photo # 4865 Hole in secondary containment liner/liner needs maintenance

Inspection/Audit Photos

Location: TEP ROCKY MOUNTAIN LLC FEDERAL-67S96W/11SWNE (GM 32-11 PAD)

Location ID: 334969

Date: 02/11/2025



Photo # 4867 Hole in secondary containment liner/liner needs maintenance



Photo # 4870 Holes in secondary containment liner/liner needs maintenance

Inspection/Audit Photos

Location: TEP ROCKY MOUNTAIN LLC FEDERAL-67S96W/11SWNE (GM 32-11 PAD)

Location ID: 334969

Date: 02/11/2025

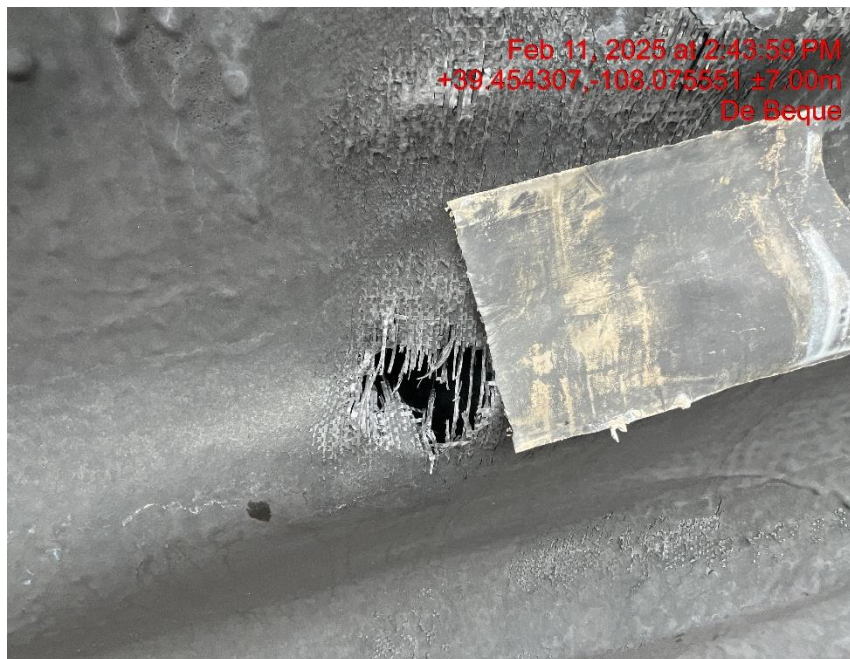


Photo # 4871 Hole in secondary containment liner/liner needs maintenance



Photo # 4873 Hole in secondary containment liner/liner needs maintenance