

Inspection/Audit Photos
Location Name: QB Energy HILL 16-2D (B16E) Pad
Location ID: 334951



Photo # 5001 From entrance to location



Photo # 5002 From entrance to location

Inspection/Audit Photos

Location Name: QB Energy HILL 16-2D (B16E) Pad

Location ID: 334951



Photo # 5003 Location



Photo # 5004 Location



Inspection/Audit Photos
Location Name: QB Energy HILL 16-2D (B16E) Pad
Location ID: 334951



Photo # 5005 Location



Photo # 5006 Location

Inspection/Audit Photos
Location Name: QB Energy HILL 16-2D (B16E) Pad
Location ID: 334951

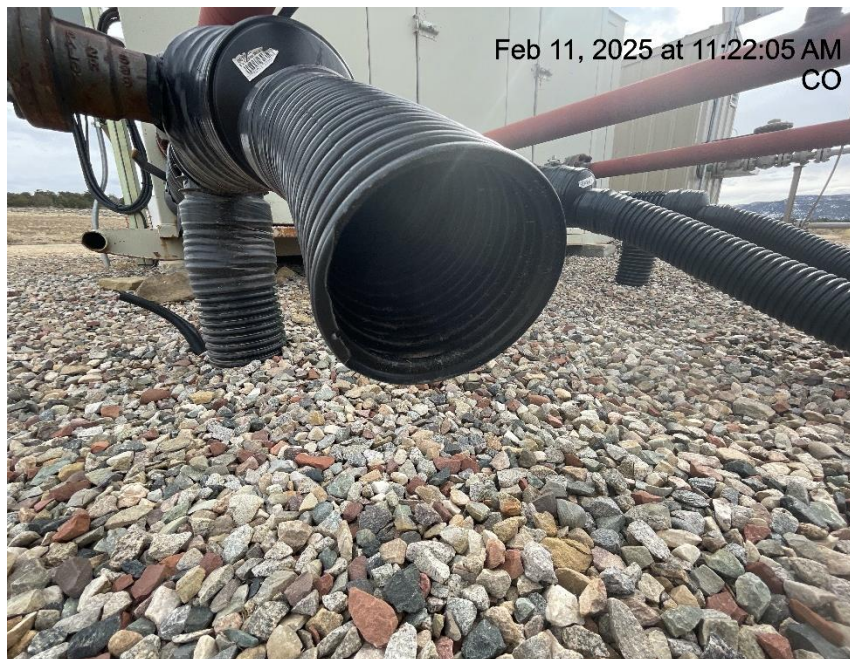


Photo # 5007 Location

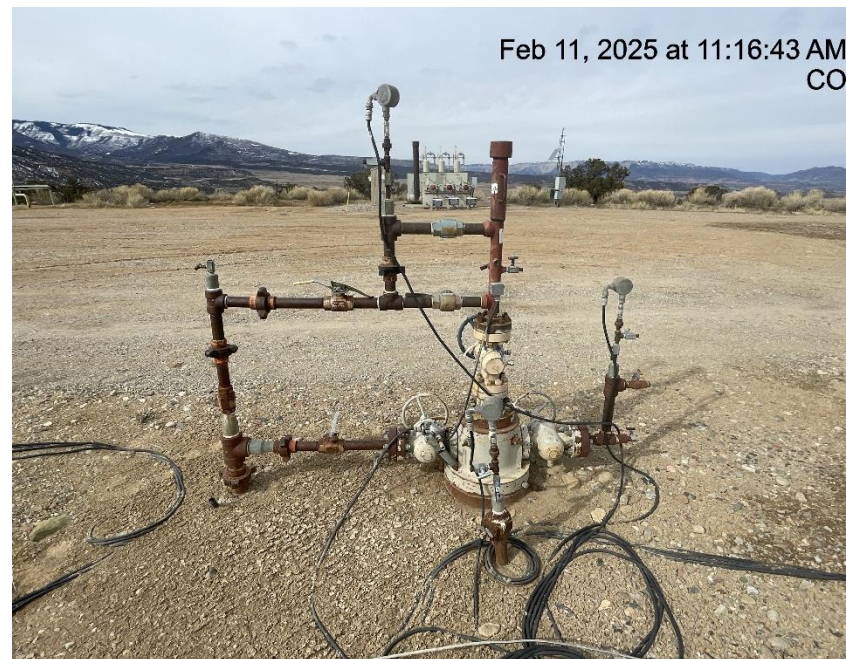


**Photo # 5008 Flowline heating insulation open ended
/wildlife hazard/available for entry by wildlife**

Inspection/Audit Photos
Location Name: QB Energy HILL 16-2D (B16E) Pad
Location ID: 334951



**Photo # 5009 Flowline heating insulation open ended
/wildlife hazard/available for entry by wildlife**



**Photo # 5010 HILL 16-3 well - intermediate casing annulus
inaccessible**

Inspection/Audit Photos
Location Name: QB Energy HILL 16-2D (B16E) Pad
Location ID: 334951

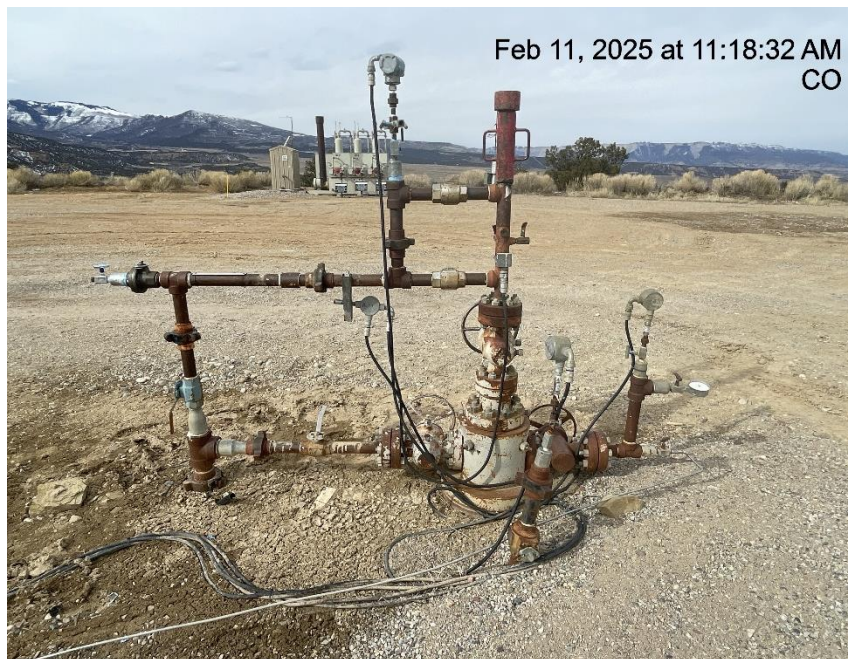


Photo # 5011 HILL 9-14C well - intermediate casing annulus inaccessible

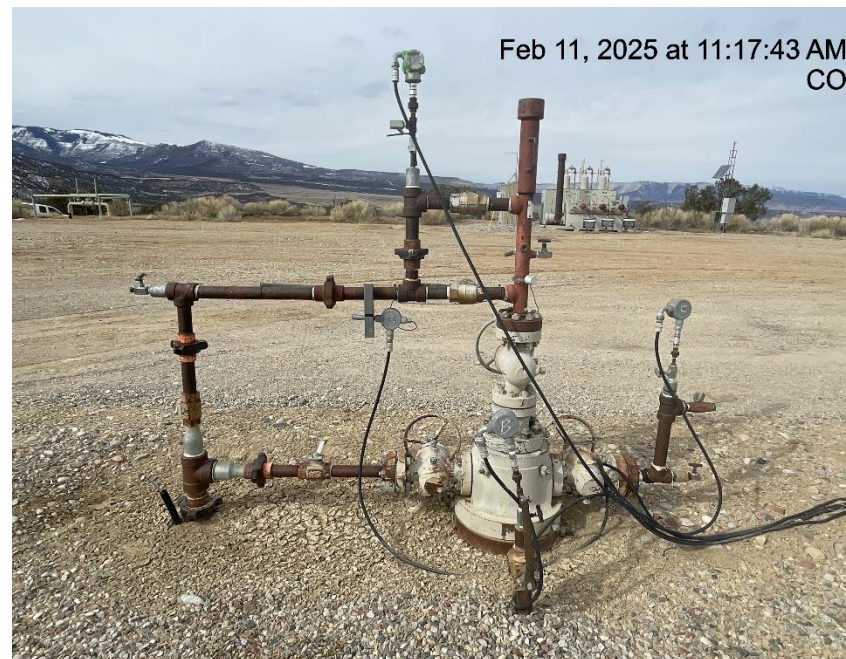


Photo # 5012 HILL 16-2D well - intermediate casing annulus inaccessible

Inspection/Audit Photos
Location Name: QB Energy HILL 16-2D (B16E) Pad
Location ID: 334951



Photo # 5013 Unmarked deadman



Photo # 5014 Same unmarked deadman

Inspection/Audit Photos
Location Name: QB Energy HILL 16-2D (B16E) Pad
Location ID: 334951



Photo # 5015 Hole in liner/liner needs maintenance



Photo # 5016 Hole in liner/liner needs maintenance

Inspection/Audit Photos
Location Name: QB Energy HILL 16-2D (B16E) Pad
Location ID: 334951



Photo # 5017 Hole in liner/liner needs maintenance



Photo # 5018 Hole in liner/liner needs maintenance

Inspection/Audit Photos
Location Name: QB Energy HILL 16-2D (B16E) Pad
Location ID: 334951



Photo # 5019 Hole in liner/liner needs maintenance



Photo # 5020 Hole in liner/liner needs maintenance