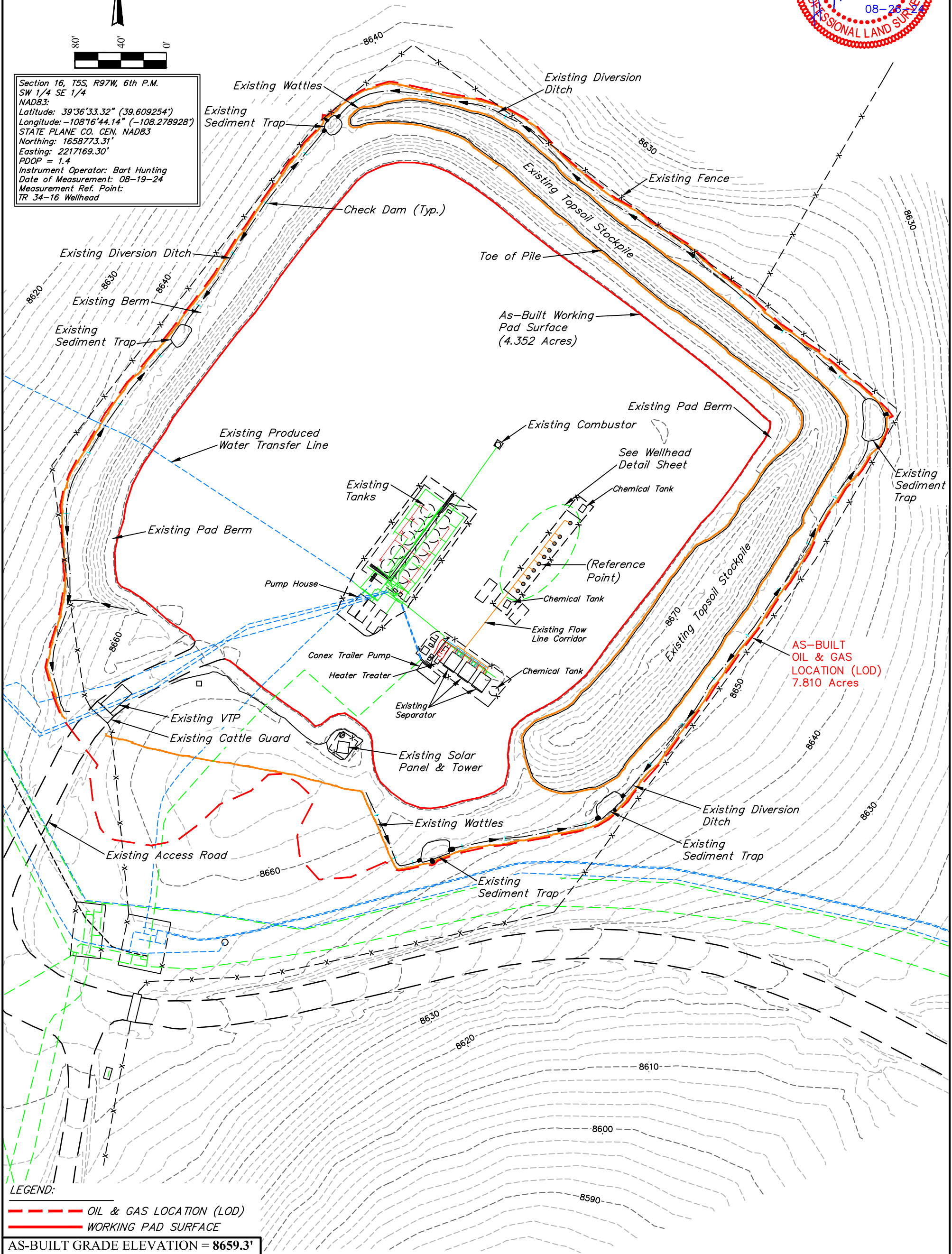


Section 16, T5S, R97W, 6th P.M.
SW 1/4 SE 1/4
NAD83:
Latitude: 39°36'33.32" (39.609254°)
Longitude: -108°16'44.14" (-108.278928°)
STATE PLANE CO. CEN. NAD83
Northing: 1658773.31'
Easting: 2217169.30'
PDOP = 1.4
Instrument Operator: Bart Hunting
Date of Measurement: 08-19-24
Measurement Ref. Point:
TR 34-16 Wellhead



LEGEND:
--- OIL & GAS LOCATION (LOD)
--- WORKING PAD SURFACE

AS-BUILT GRADE ELEVATION = 8659.3'

NOTES:
• Contours shown at 2' intervals.

Water Line (Surface)
Gas Line (Surface)
Water Line (Buried)
Gas Line (Buried)
Flow Line (Buried)
Gas Supply Line (Buried)



UELS, LLC
Corporate Office * 85 South 200 East
Vernal, UT 84078 * (435) 789-1017

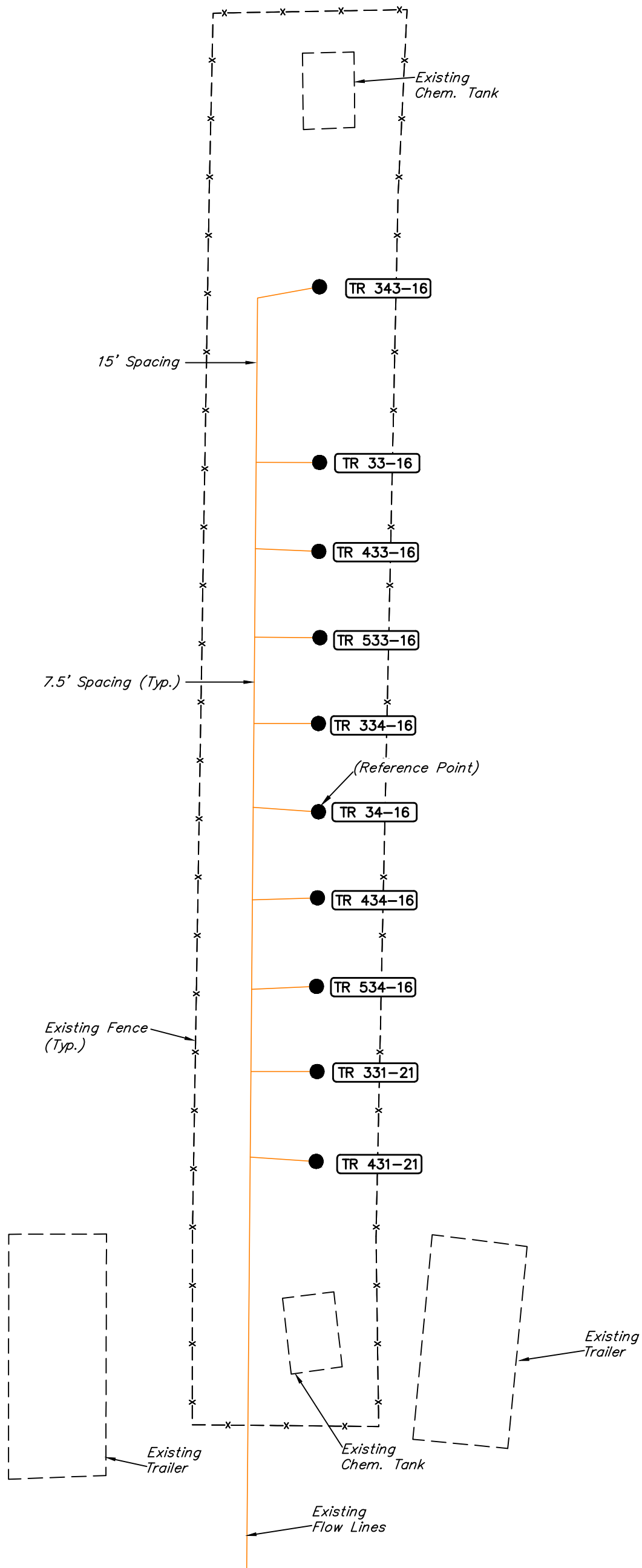
TEP Rocky Mountain LLC

TR 34-16-597 PAD
SW 1/4 SE 1/4, SECTION 16, T5S, R97W, 6th P.M.
GARFIELD COUNTY, COLORADO

SURVEYED BY	BART HUNTING	08-19-24	SCALE
DRAWN BY	D.R.B.	08-26-24	1" = 80'

AS-BUILT CONSTRUCTION LAYOUT





Section 16, T5S, R97W, 6th P.M.
SW 1/4 SE 1/4
NAD83:
Latitude: 39°36'33.32" (39.609254°)
Longitude: -108°16'44.14" (-108.278928°)
STATE PLANE CO. CEN. NAD83
Northing: 1658773.31'
Easting: 2217169.30'
PDOP = 1.4
Instrument Operator: Bart Hunting
Date of Measurement: 08-19-24
Measurement Ref. Point:
TR 34-16 Wellhead

TEP Rocky Mountain LLC

TR 34-16-597 PAD
SW 1/4 SE 1/4, SECTION 16, T5S, R97W, 6th P.M.
GARFIELD COUNTY, COLORADO

SURVEYED BY	BART HUNTING	08-19-24	SCALE
DRAWN BY	D.R.B.	08-26-24	1" = 10'

WELLHEAD DETAIL



UELS, LLC
Corporate Office * 85 South 200 East
Vernal, UT 84078 * (435) 789-1017