



Service Order #: 727810

Date: 10/21/2024

Well Name:	Location:	County:	St:	API#	
MCCORMICK 10-1		WELD	CO		
Formation:	Cement Via:	Type Of Service:	Well Type/Age:	AFF#	PO#
	TUBING	SQUEEZE			

Customer: OCCIDENTAL

Remarks: H2O TEMP 67\*, PH 7, CHLORIDES <100  
115 SKS, 31.1 BBLS, DISPLACE 24.3 BBLS  
28.1 BBLS BELOW RETAINER  
3 BBLS ABOVE RETAINER  
ETOC 7086' - 6863

Customer Rep: JOSE C.

PH:

## WELLBORE DATA

Type	Size	Weight	Depth	Volume
Surface Casing:				
Production Casing:	4.5	11.6	7,086.0	0
Intermediate:	0	0	0.0	0
Drill Pipe:	0	0	0.0	0
Tubing:	2.375	4.7	7,056.0	

Type	Size	Depth (Top)	Depth (Bot)	Volume
Liner:				0
Open Hole:	0.0			

## OTHER DATA

BHT	Max PSI	Total Depth

Packer or Retainer Type/Depth:

RETAINER	7,056
----------	-------

Perf Depths: # TotalPerf

7,086.0	0	
	0	
	0	

TIME	PUMP RATES		DENSITY	PRESS	STG TOT	TOTAL	REMARKS
	WATER (gpm)	PUMP (bpm)	(lb/gal)	(psi)	(bbbls)	(bbbls)	
12:05	0	0.1	-0.01	4664	0.1	0.1	PSI TEST
12:10	0	0.0	15.55	0	0.0	0.1	START CMT
12:24	52	2.4	15.00	42	26.2	26.4	OFF LINE / STOPPING
12:23	0	2.2	16.26	41	31.1	31.2	END CMT / START DISPLACEMENT
12:35	0	0.6	8.09	374	24.3	56.8	OFF LINE

## Summary

Max Fl. Rate	Avg Fl. Rate	Max Psi	Avg Psi
2.4	2.2	5.706	342

Customer Acknowledgement:

Service Rating:

☐ Satisfactory  
☐ Unsatisfactory

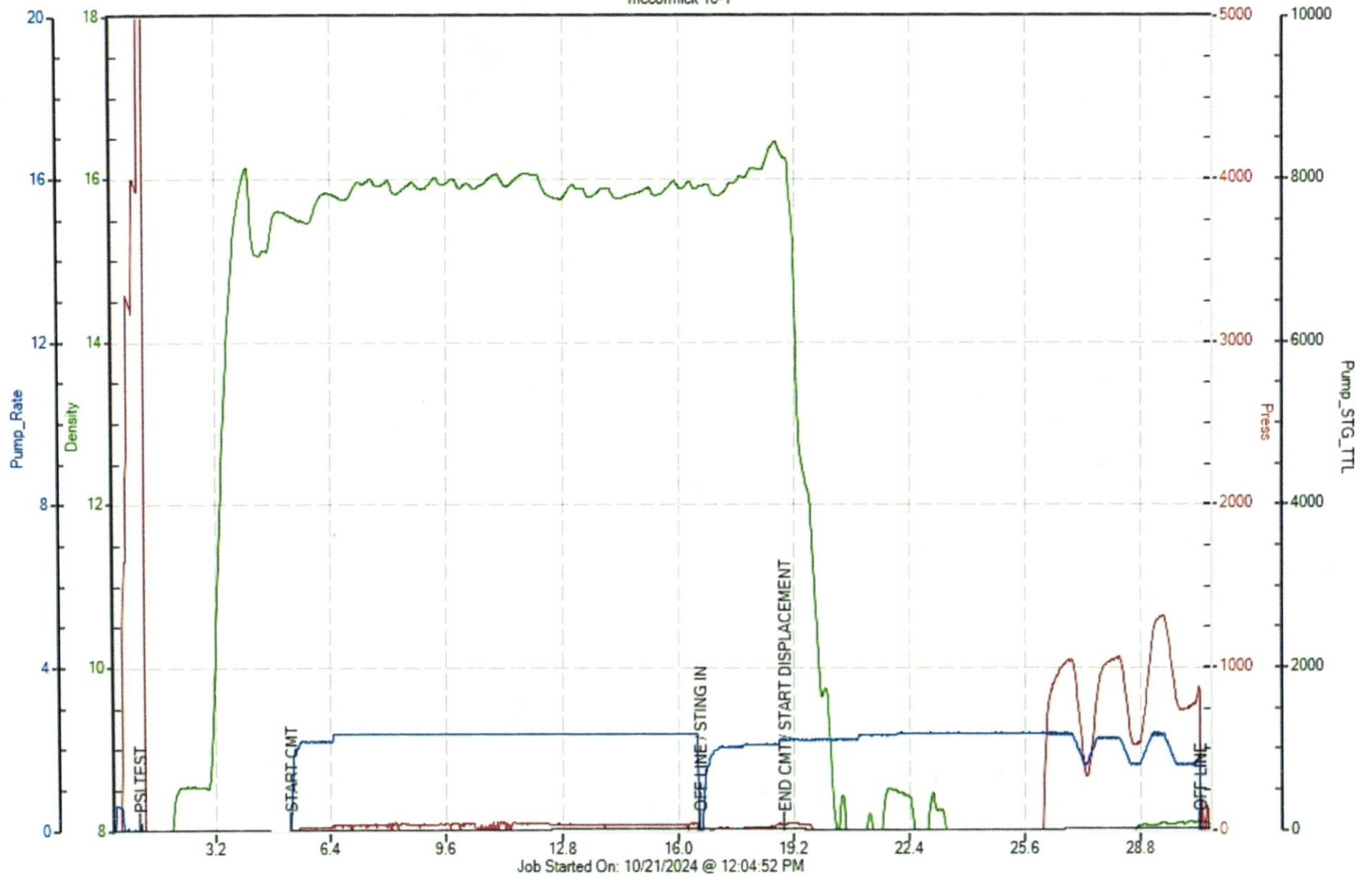
Cementer:

BOHLEN

## PRODUCTS USED

NIO AGM, G CMT, 35% SILICA, .4% C16A (LATEX), .4% C17 (FLUID LOSS), .3% C35 (DISPERSANT), .2% C23 (RETARDER), 1.52 YIELD, 6.22 GAL/SKS, 15.8 LBS/GAL

OCCIDENTAL  
mccormick 10-1





Service Order #: 728042

Date: 10/22/2024

Well Name:	Location:	County:	St:	API#
MCCORMICK 10-1		WELD	CO	

Formation:	Cement Via:	Type Of Service:	Well Type/Age:	AFE#:	PO#:
	TUBING	SUSSEX AGM			

Customer: OXY USA INC

Remarks: H2O TEMP 68\*, PH ~7, CHLORIDES 0 PPM  
100SKS, 20.8BBLS, DISPLACE 15.5BBLS  
PERF@ 4320'  
CICR@ 4270'  
ETOC@ 4206'

Customer Rep: JOSE

PH:

WELLBORE DATA				
Type	Size	Weight	Depth	Volume
Surface Casing:				
Production Casing:	4.5	0	0.0	0
Intermediate:	0	0	0.0	0
Drill Pipe:	0	0	0.0	0
Tubing:	2.375	0		

Type	Size	Depth (Top)	Depth (Bot)	Volume
Liner:				0
Open Hole:	0.0			

OTHER DATA		
BHT	Max PSI	Total Depth

Packer or Retainer Type/Depth:

--	--

Perf Depths:	#	TotalPerf
	0	
	0	
	0	

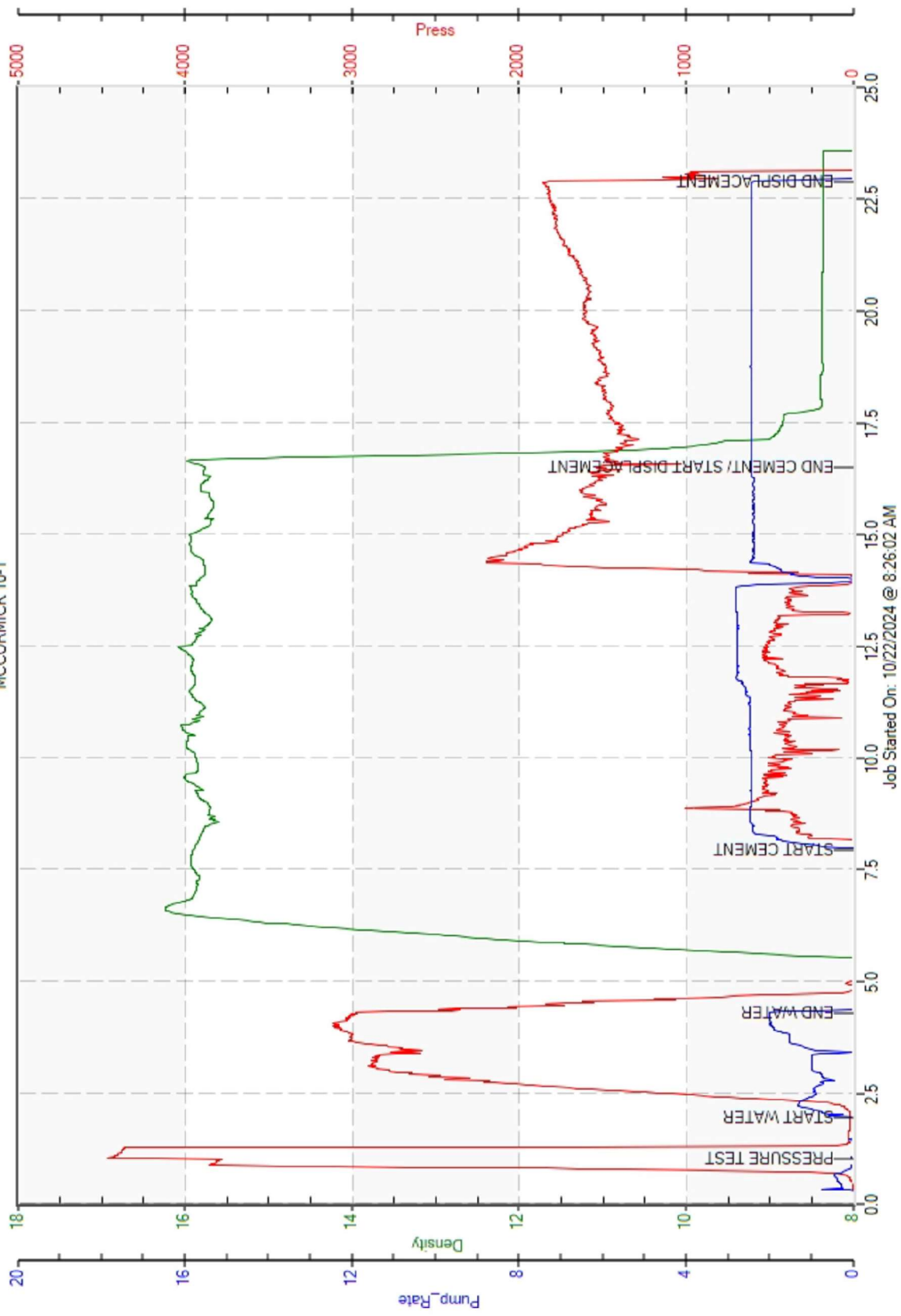
TIME	PUMP RATES		DENSITY	PRESS	STG TOT	TOTAL	REMARKS
	WATER (gpm)	PUMP (bpm)	(lb/gl)	(psi)	(bbbls)	(bbbls)	
8:27	0	0.1	0.01	4462	0.2	0.2	PRESSURE TEST
8:27	0	0.0	0.01	17	0.2	0.2	START WATER
8:30	0	2.0	0.01	2981	3.0	3.0	END WATER
8:33	0	0.0	15.90	0	0.0	3.0	START CEMENT
8:42	0	2.5	15.78	1521	20.8	23.8	END CEMENT/ START DISPLACEMENT
8:48	0	2.3	8.37	1798	15.5	39.5	END DISPLACEMENT

## Summary

Max Fl. Rate	Avg Fl. Rate	Max Psi	Avg Psi
2.5	2.2	4,462	1,221

Customer Acknowledgement:	Service Rating:	Cementer:	PRODUCTS USED
	<input type="checkbox"/> Satisfactory <input type="checkbox"/> Unsatisfactory	JEREMIE	SUSSEX AGM, CLASS G CMT, 2% GYPSUM(EXPANSION), .4% C16A(LATEX), .25% C17(FUID LOSS), .3% C35(DISPERSANT), 1.17 YIELD, 5.05 GAL/SKS, 15.8 LBS/GAL

OXY USA INC  
MCCORMICK 10-1





Service Order #: 728043

Date: 10/22/2024

Well Name:	Location:	County:	St:	API#
MCCORMICK 10-1		WELD	CO	

Formation:	Cement Via:	Type Of Service:	Well Type/Age:	AFE#:	PO#:
	TUBING	LOWER AGM			

Customer: OXY USA INC

Remarks: H2O TEMP 70\*, PH ~7, CHLORIDES 0 PPM  
225SKS, 48.1BBLS, DISPLACE 3.1BBLS  
PERF@ 1400/2100'  
CICR@1460'  
ETOC@ 1299'

Customer Rep: JOSE

PH:

WELLBORE DATA				
Type	Size	Weight	Depth	Volume
Surface Casing:				
Production Casing:	4.5	0	0.0	0
Intermediate:	0	0	0.0	0
Drill Pipe:	0	0	0.0	0
Tubing:	2.375	0		

Type	Size	Depth (Top)	Depth (Bot)	Volume
Liner:				0
Open Hole:	0.0			

OTHER DATA		
BHT	Max PSI	Total Depth

Packer or Retainer Type/Depth:

--	--

Perf Depths:	#	TotalPerf
	0	
	0	
	0	

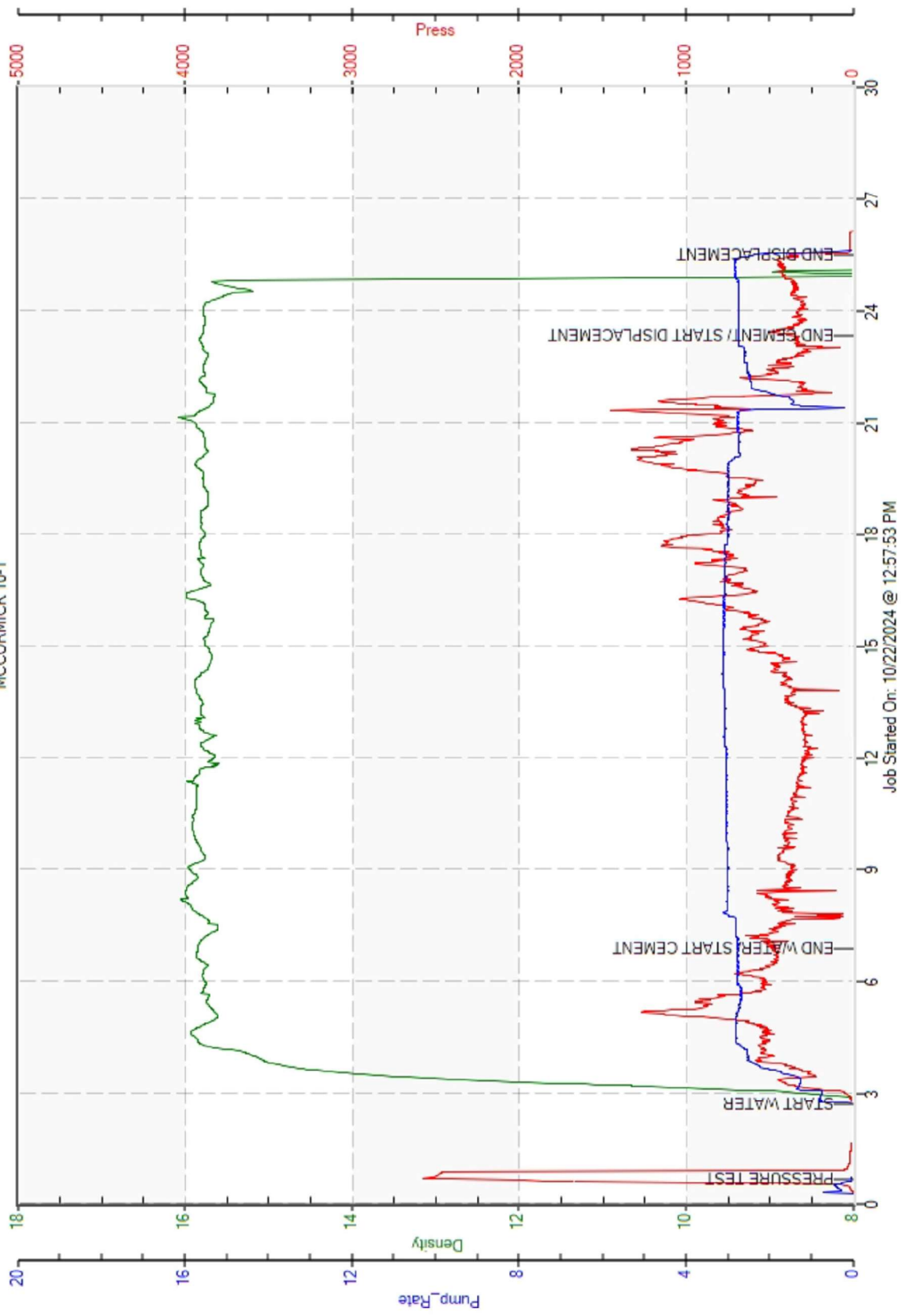
TIME	PUMP RATES		DENSITY	PRESS	STG TOT	TOTAL	REMARKS
	WATER (gpm)	PUMP (bpm)	(lb/gal)	(psi)	(bbls)	(bbls)	
12:58	0	0.0	0.00	2573	0.1	0.1	PRESSURE TEST
13:00	0	0.0	3.72	0	0.1	0.1	START WATER
13:04	0	2.8	15.85	469	10.0	10.0	END WATER/ START CEMENT
13:21	0	2.7	15.80	403	48.1	58.1	END CEMENT/ START DISPLACEMENT
13:23	0	2.3	0.00	383	3.1	64.1	END DISPLACEMENT

## Summary

Max Fl. Rate	Avg Fl. Rate	Max Psi	Avg Psi
2.8	2.8	2,573	529

Customer Acknowledgement:	Service Rating:	Cementer:	PRODUCTS USED
	<input type="checkbox"/> Satisfactory <input type="checkbox"/> Unsatisfactory	JEREMIE	LOWER AGM, G CMT, 4% GYPSUM(EXPANSION), 1% CaCl, .4% C16A(LATEX), 1.20 YIELD, 5.149 GAL/SKS, 15.8 LBS/GAL

OXY USA INC  
MCCORMICK 10-1







Service Order #: 730673

Date: 10/25/2024

Well Name:	Location:	County:	St:	API#
MCCORMICK 10-1		WELD	CO	

Formation:	Cement Via:	Type Of Service:	Well Type/Age:	AFE#:	PO#:
	TUBING	SURFACE AGM			

Customer: OXY USA INC

Remarks: H2O TEMP 70\*, PH ~7, CHLORIDES 0 PPM  
217SKS, 46.8BBLs  
1. PERF@ 1225' CICR@1175' ETOC@1175'  
2. EOT@1175 ETOC@ 0'  
3. PUNCH@ 80' ETOC@0'

Customer Rep: JOSE

PH:

WELLBORE DATA				
Type	Size	Weight	Depth	Volume
Surface Casing:	8.625			
Production Casing:	4.5	0	0.0	0
Intermediate:	0	0	0.0	0
Drill Pipe:	0	0	0.0	0
Tubing:	2.375	0		

Type	Size	Depth (Top)	Depth (Bot)	Volume
Liner:				0
Open Hole:	0.0			

OTHER DATA		
BHT	Max PSI	Total Depth

Packer or Retainer Type/Depth:

--	--

Perf Depths:	#	TotalPerf
	0	
	0	
	0	

TIME	PUMP RATES		DENSITY	PRESS	STG TOT	TOTAL	REMARKS
	WATER (gpm)	PUMP (bpm)	(lb/gal)	(psi)	(bbls)	(bbls)	
9:16	0	0.0	0.01	2393	0.1	0.1	PRESSURE TEST
9:19	70	0.6	15.90	29	0.1	0.1	START CEMENT
9:33	0	1.2	15.91	424	21.6	21.6	END CEMENT/ START DISPLACEMENT
9:40	0	1.3	9.12	1214	4.5	30.4	END DISPLACEMENT
10:23	0	0.6	15.78	0	0.0	0.0	START CEMENT
10:30	70	2.4	15.96	258	20.0	20.0	END CEMENT
11:28	0	0.0	15.91	0	0.0	0.0	START CEMENT
11:30	0	2.4	15.68	35	5.2	5.2	END CEMENT
11:36	0	0.0	0.00	0	0.0	0.0	Paused 11:36:04

## Summary

Max Fl. Rate	Avg Fl. Rate	Max Psi	Avg Psi
2.4	0.9	2,393	602

Customer Acknowledgement:	Service Rating:	Cementer:	PRODUCTS USED
	<input type="checkbox"/> Satisfactory <input type="checkbox"/> Unsatisfactory	JEREMIE	SURFACE AGM, G CMT, 4% GYPSUM(EXPANSION), 2% CaCl, .4% C-16A(LATEX), 1.21 YIELD, 5.168 GAL/SKS, 15.8 LBS/GAL

