

**TEP Rocky Mountain LLC
Federal RGU 23-7-297
Location ID: 316408**



Unused equipment.



Unused equipment.

TEP Rocky Mountain LLC
Federal RGU 23-7-297
Location ID: 316408



Debris



Unused equipment.

**TEP Rocky Mountain LLC
Federal RGU 23-7-297
Location ID: 316408**



Staining



Staining

TEP Rocky Mountain LLC
Federal RGU 23-7-297
Location ID: 316408



Staining



Equipment storage

TEP Rocky Mountain LLC
Federal RGU 23-7-297
Location ID: 316408



Staining



Staining. Equipment storage.

TEP Rocky Mountain LLC
Federal RGU 23-7-297
Location ID: 316408



Unused equipment. Open to wildlife.



Unused equipment.

TEP Rocky Mountain LLC
Federal RGU 23-7-297
Location ID: 316408



Staining



Staining

TEP Rocky Mountain LLC
Federal RGU 23-7-297
Location ID: 316408

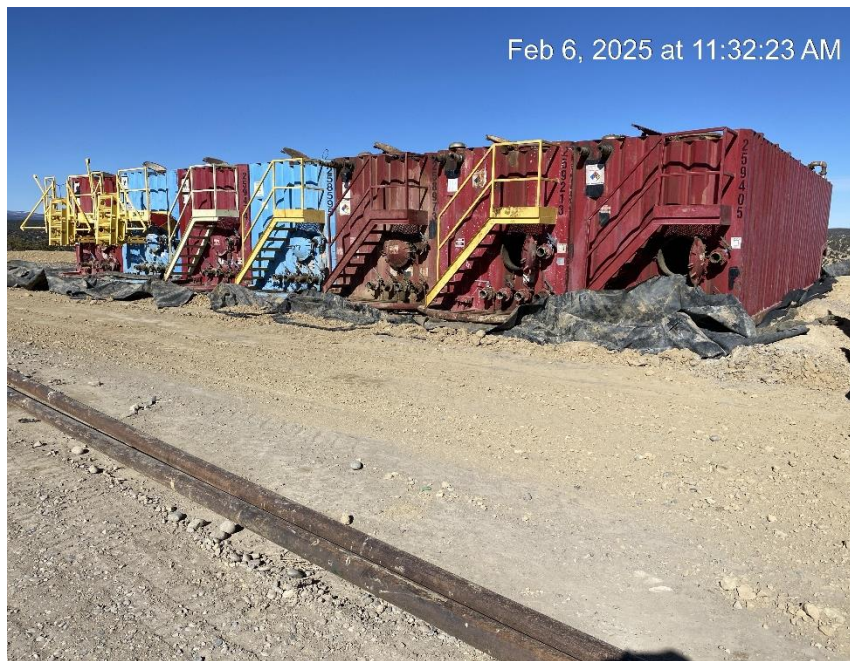


Staining



Staining

TEP Rocky Mountain LLC
Federal RGU 23-7-297
Location ID: 316408



Equipment storage. Open to wildlife.



Staining

TEP Rocky Mountain LLC
Federal RGU 23-7-297
Location ID: 316408



Staining



Unused equipment.

TEP Rocky Mountain LLC
Federal RGU 23-7-297
Location ID: 316408



Unused equipment.



Debris

TEP Rocky Mountain LLC
Federal RGU 23-7-297
Location ID: 316408

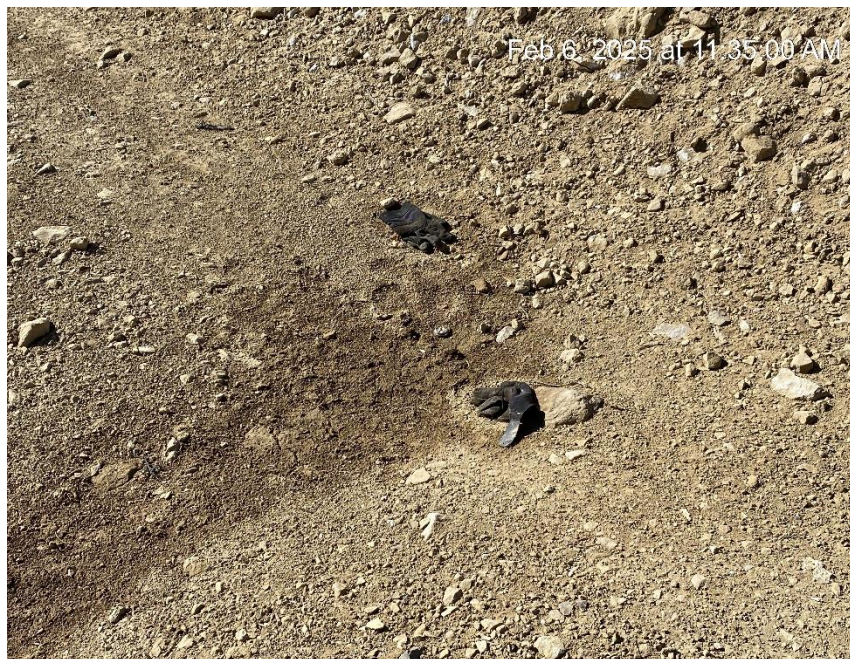


Debris

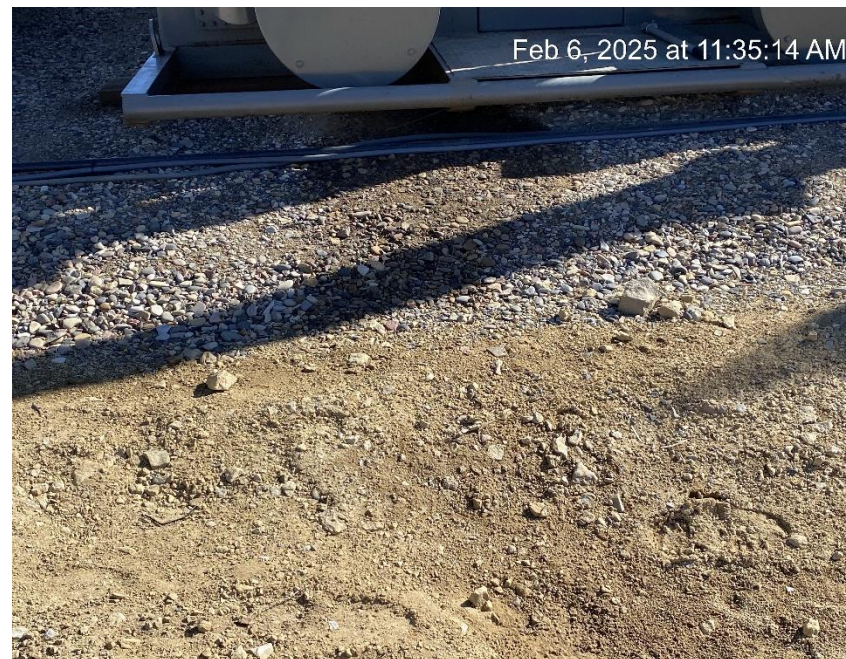


Debris

TEP Rocky Mountain LLC
Federal RGU 23-7-297
Location ID: 316408



Debris. Staining.



Staining

TEP Rocky Mountain LLC
Federal RGU 23-7-297
Location ID: 316408

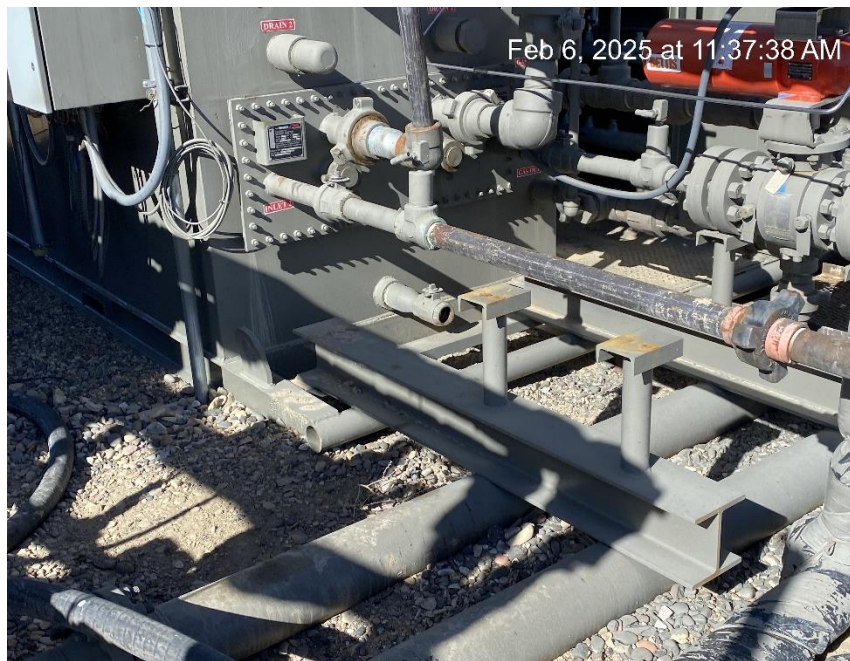


Debris

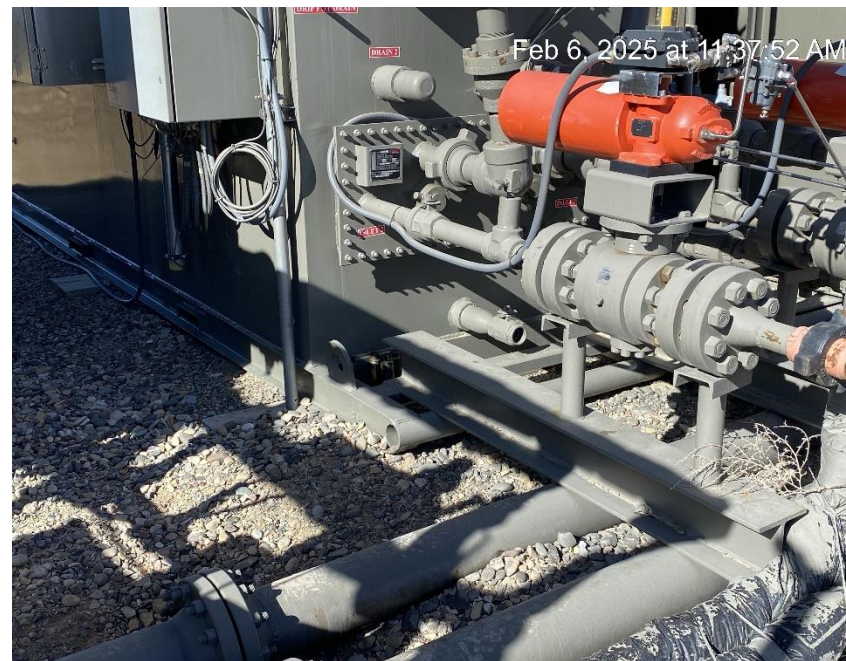


Debris

TEP Rocky Mountain LLC
Federal RGU 23-7-297
Location ID: 316408



Open end ethylene glycol drain



Open end ethylene glycol drain



TEP Rocky Mountain LLC
Federal RGU 23-7-297
Location ID: 316408



Open end ethylene glycol drain

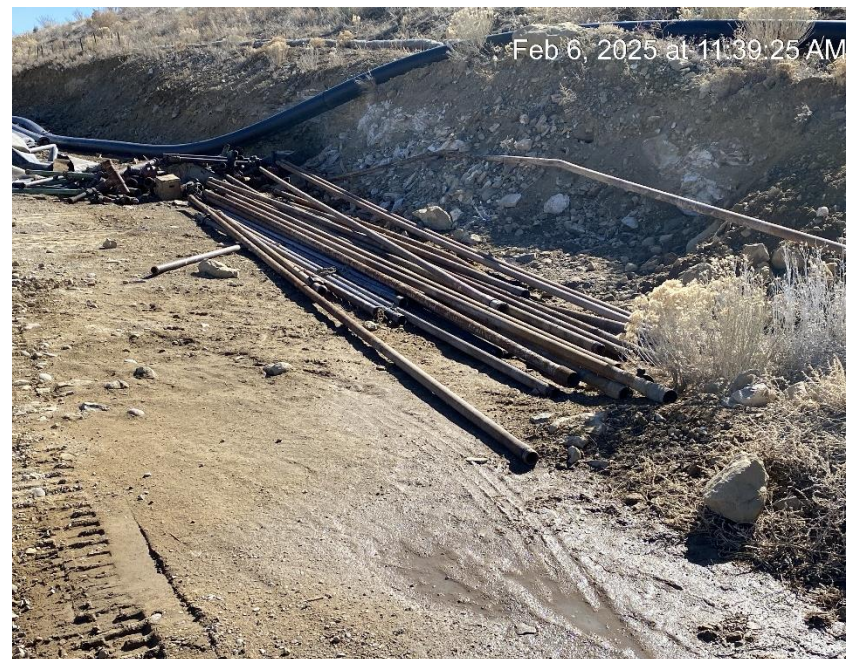


Debris

TEP Rocky Mountain LLC
Federal RGU 23-7-297
Location ID: 316408



Equipment storage.



Equipment storage.

TEP Rocky Mountain LLC
Federal RGU 23-7-297
Location ID: 316408



Equipment storage.



Well signs not displayed

TEP Rocky Mountain LLC
Federal RGU 23-7-297
Location ID: 316408



Unused equipment.



Equipment storage

**TEP Rocky Mountain LLC
Federal RGU 23-7-297
Location ID: 316408**



Debris



Staining

**TEP Rocky Mountain LLC
Federal RGU 23-7-297
Location ID: 316408**



Staining



Unused equipment.

**TEP Rocky Mountain LLC
Federal RGU 23-7-297
Location ID: 316408**



Staining



Staining

TEP Rocky Mountain LLC
Federal RGU 23-7-297
Location ID: 316408



Debris

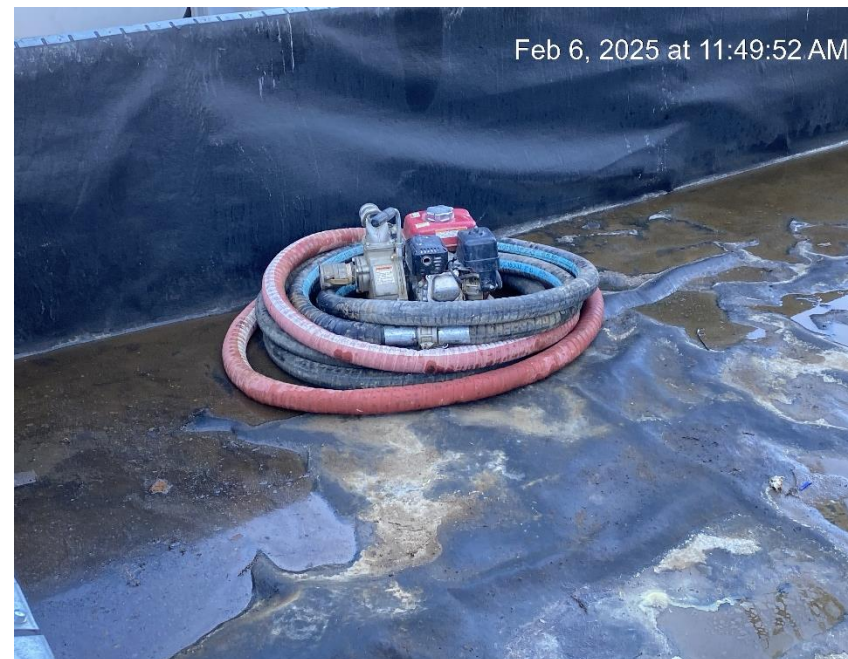


Debris

TEP Rocky Mountain LLC
Federal RGU 23-7-297
Location ID: 316408



Staining



Equipment storage

TEP Rocky Mountain LLC
Federal RGU 23-7-297
Location ID: 316408



Open end load line



Open end load line

**TEP Rocky Mountain LLC
Federal RGU 23-7-297
Location ID: 316408**



Debris. Lack of containment.



Equipment storage

**TEP Rocky Mountain LLC
Federal RGU 23-7-297
Location ID: 316408**



Equipment storage



Staining

**TEP Rocky Mountain LLC
Federal RGU 23-7-297
Location ID: 316408**



Location from Northeast corner and entrance



Location from Northwest corner

**TEP Rocky Mountain LLC
Federal RGU 23-7-297
Location ID: 316408**



Location from Southwest corner



Location from Southeast corner